



MEDIA KIT



LOCAL & MUNICIPAL CONSOLIDATED ELECTIONS

Tuesday, November 8, 2011



Dean C. Logan
Los Angeles County
REGISTRAR-RECORDER/COUNTY CLERK
Media and Communications
www.lavote.net

Message from the Registrar of Voters.....	5
Introduction.....	6
Media and Communication Services.....	7
Rules for Election Media, Observers and Exit Polls.....	8
Statistical Overview.....	9, 10
Ballot Measures and Offices.....	11, 12, 13, 14
Historical Overview.....	15
Ballot Processing Trends.....	16
Voting Options.....	17
Election Day/Night.....	18, 19
Finalizing the Official Vote Tally (Canvass).....	20, 21
Canvass Schedule.....	22
Requesting a Recount.....	23
2012 Elections Schedule.....	24





October 31, 2011

Dear Voter,

On November 8, 2011, voters across Los Angeles County will vote in the Local and Municipal Consolidated Elections conducted. The Los Angeles County Registrar-Recorder/County Clerk, is always honored to partner with the dozens of municipalities and other local jurisdictions around the County in conducting local democratic processes, which have great impact on the daily lives of our citizens.

For the November 8, 2011, Local and Municipal Consolidated Elections 1,646,732 voters will be eligible to participate. This accounts for 38% of the 4,349,599 registered voters countywide.

Contests to appear on the ballot include 19 cities, 42 unified and elementary school districts, 4 high school districts, 6 community college districts, 4 water districts, 6 county water districts, 8 city measures and 3 school district measures. The number of offices to be elected is 195. In preparation for the elections, the Registrar-Recorder/County Clerk recruited 4,485 pollworkers to staff 897 polling places on November 8.

The Local & Municipal Consolidated Elections, gives local and municipal governments an opportunity to share costs and save valuable taxpayer dollars. At the same time the Consolidated Elections provide for a consistent and standardized voter experience throughout the county.

Los Angeles County is fully committed to provide local jurisdictions and the voters with fair, accessible, and transparent services.

For further information regarding Los Angeles County elections please consult our website at www.lavote.net.

Sincerely,

A handwritten signature in black ink that reads "Dean C. Logan". The signature is fluid and cursive.

Dean C. Logan
Registrar-Recorder/County Clerk



ABOUT THE REGISTRAR-RECORDER/COUNTY CLERK

The mission of the Registrar-Recorder/County Clerk is to serve Los Angeles County by providing essential records management and election services in a fair, accessible and transparent manner.

The Registrar-Recorder/County Clerk is responsible for registration of voters; maintenance of registration files; conducting federal, state, local and special district elections; checking initiatives, referenda and recall petitions; filing campaign reports; recording real estate documents and other records; maintaining birth, death and marriage records; issuing marriage licenses; and filing business documents.

ABOUT LOS ANGELES COUNTY

Los Angeles County has a population of roughly 10 million residents, which accounts for approximately 30% of the total population of the State of California. It has more residents than any other County in the nation. With more than 500 political districts and more than 4 million registered voters, Los Angeles County is the largest and most complex election jurisdiction in the country.

CONNECT WITH US

www.lavote.net



Information about other Los Angeles County services is provided at www.lacounty.gov

“To Enrich Lives Through Effective and Caring Service”



Los Angeles County **REGISTRAR-RECORDER/COUNTY CLERK**

ABOUT THE RR/CC MEDIA & COMMUNICATIONS SECTION

The Los Angeles County Registrar-Recorder/County Clerk (RR/CC) Media & Communications Section is committed to providing members of the public and news media with timely and clear information regarding the RR/CC.

CONTACTING MEDIA INFORMATION

For members of the media requiring additional information please contact the Media & Communications Section at 562-462-2726 or 562-462-2648.

INTERVIEW & FILMING REQUESTS

All Interview and filming arrangements are made through the Media & Communications Section. Please contact the RR/CC Media & Communications Section *prior* to arriving at our office locations to coordinate any interviews or filming.

To schedule an interview, please contact the Media & Communications Section
Marcia Ventura 562-462-2726 or
Eileen Shea 562-462-2648

ELECTION NIGHT RESULTS & INFORMATION

Election night results are available via our website www.lavote.net. Should members of the media have questions, please call the Media & Communications Section. The first press bulletin with initial Vote by Mail ballot results will be issued about 8:30 p.m. As precinct ballots arrive during the evening, updated cumulative results will be available and posted on the RR/CC's website www.lavote.net.

Election night results are always unofficial:

California state law allows 28 days for the conduct of the official canvass of final election results. All ballots cannot be counted on election night.

Semi-Official Election Results:

Preliminary Vote by Mail tally results will be available at approximately 8:30 p.m. After the initial precinct bulletin and as ballots are processed, semi-official results will be available approximately every 20 minutes until all precincts have reported.

Online Updates:

Election results will be updated and available in real time as the ballots arrive and are tallied at <http://www.lavote.net>.

Twitter Updates:

Some abbreviated result updates will also be available via Twitter at <http://twitter.com/lacountyrrcc>.

Live Streaming:

Live Streaming footage of election night activities at RR/CC Headquarters in Norwalk will be available at http://www.lavote.net/GENERAL/Press_Room.cfm?Section=Stream.



MEDIA PROCEDURES ON ELECTION DAY

Media conducting “Exit Polls” have different rules than poll watchers do. Clearly identified members of the news media may be within 25 feet of a polling place, and may speak to voters leaving the site as long as they do not interrupt voting and are at a distance of 25 feet from the entrance to the polling place.

PLEASE NOTE:

Media may not speak to any voters, election clerks, poll watchers or any other individuals while inside the polling place. Media may only speak with individuals at the prescribed distance of 25 feet from the entrance of the polling place.

Media may take pictures or run a television camera inside the polling place providing they respect the voter’s privacy and do not interfere with voting. However, voters may not be photographed, videotaped or filmed entering or exiting a polling place, and may not be filmed inside the polling place, without the voter’s permission. (EC §18541.)

Media must follow general observer guidelines provided at each election polling place:

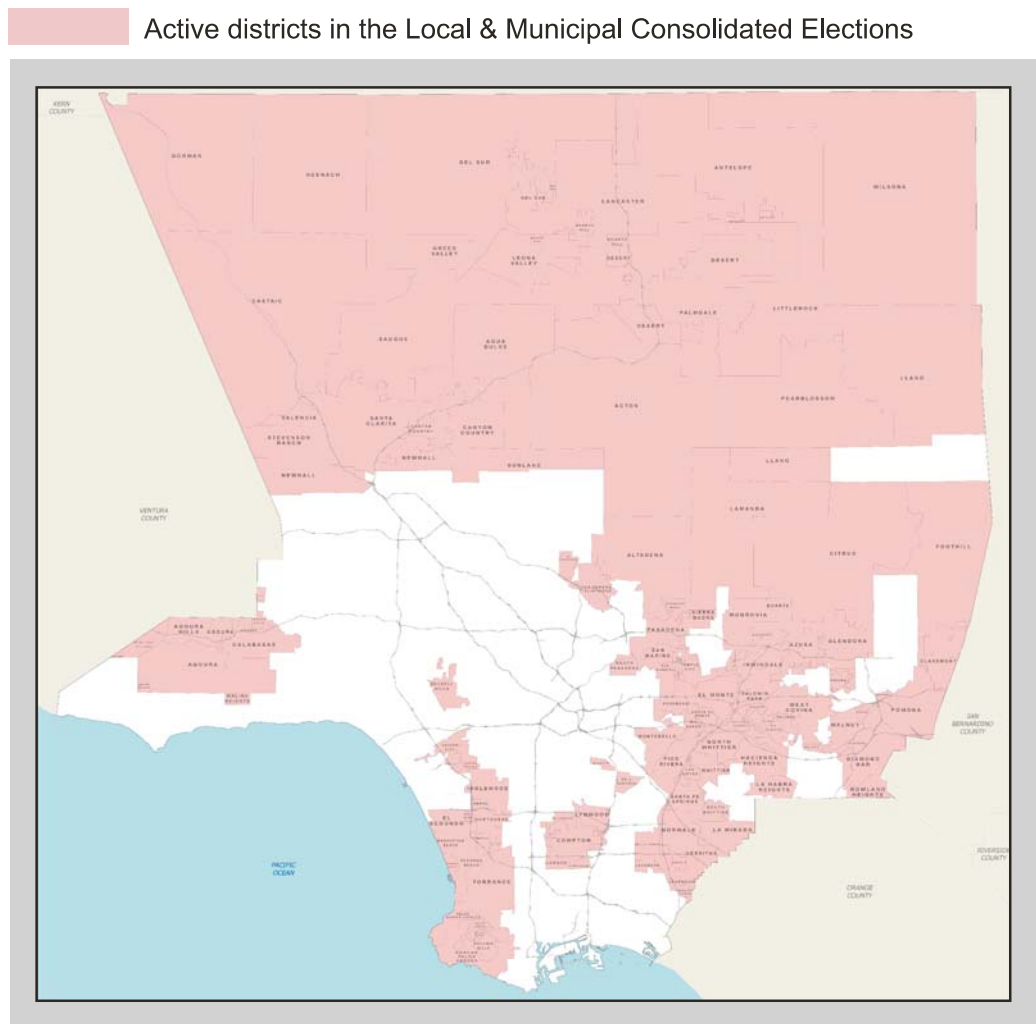
- The polling place Inspector is responsible for the decorum of the polling place and for ensuring that the polling process is carried out as efficiently and smoothly as possible. News media wishing to observe the polling process should first check in with the polling place Inspector.
- News media should arrange with the polling place Inspector as to the location for observing the process without causing any disruption. This includes setups for cameras.
- Polling places are not available to the media before the polls open at 7 a.m. to ensure poll workers have adequate time to properly set up the polling place and prepare for voters.
- The hours between 5 p.m. and 7 p.m. are when the polls may be busiest and the uncoordinated presence of observers can be most disruptive. Therefore, coordination with the Inspector during this time period is essential. If news media wish to observe during this period, please be respectful of poll workers priorities and check-in with the Inspector first. Cooperation between media and the polling place officials is necessary so that the objectives of public observation and voter convenience and privacy can both be achieved.
- The California Secretary of State and the Attorney General have reviewed the “Electioneering” provisions and have determined that these provisions do not apply to the Press and Media conducting “Exit Polls.” However, no one may interfere with the conduct of the election. Therefore, news media conducting “Exit Polls” must remain at least 25 feet from the entrance to the polls.
- Exit polling of the voters is permitted but must be conducted outside the room where the voting is actually taking place. Obviously, the voter has the right not to disclose how he or she may have voted.



ELECTION STATISTICS

- Registered Voters – Los Angeles County..... 4,349,599*
- Registered Voters in Local and Municipal Consolidated Elections 1,646,732*
- Estimated Election Cost \$11.1 million
- Number of Elective Contests Involved in Election78
- Number of Local Ballot Measures11
- Number of Poll Locations897
- Number of Precinct Officers4,485
- Number of Ballot Groups 153

*Registration figures as of October 21, 2011



VOTER REGISTRATION STATISTICS

In Los Angeles County, current voter registration for the November 8, 2011 Local and Municipal Consolidated Elections is:

QUALIFIED PARTIES	REGISTRATION*	PERCENTAGE
Democratic	2,222,917	51.11
Republican	999,169	22.98
Decline to State/Nonpartisan	970,633	22.32
American Independent	91,258	2.09
Peace and Freedom	22,867	0.52
Green	22,221	0.51
Libertarian	20,534	0.47
TOTAL REGISTRATION	4,349,599	100%

Voter registration for the five Supervisorial districts within Los Angeles County is provided below:

DISTRICT	REGISTRATION*
First Supervisorial District Gloria Molina	664,377
Second Supervisorial District Mark Ridley-Thomas	778,203
Third Supervisorial District Zev Yaroslavsky	942,880
Fourth Supervisorial District Don Knabe	937,498
Fifth Supervisorial District Michael D. Antonovich	1,026,641
TOTAL	4,349,599

*Registration figures as of October 21, 2011



The following charts reflect the number of measures and offices on which to vote in the November 8, 2011 Local & Municipal Election by jurisdiction.

Jurisdiction	Registration*	Permanent VBM*	Measures	Offices
Cities				
Agoura Hills	12,851	3,087		2
Baldwin Park	26,774	4,567		3
Bell Gardens	11,697	1,898		2
Diamond Bar	29,846	6,781		2
Duarte	11,082	2,963		2
El Monte	32,856	5,681		3
Hawaiian Gardens	4,045	768		2
Hawthorne	31,487	5,341		3
Hermosa Beach	11,958	3,257	2	4
Lynwood	21,802	3,356		4
Maywood	7,679	1,032	2	4
Montebello	27,228	5,028	1	4
Palmdale	59,238	12,447		3
Pico Rivera	30,340	4,901		3
Rancho Palos Verdes	27,263	8,359		3
San Marino	8,549	2,362	2	2
South El Monte	6,636	1,261		3
South Pasadena	15,120	3,767	1	4
West Covina	49,308	9,756		2
19			8	55

*Registration and Permanent VBM as of 10/20/11.



Jurisdiction	Registration*	Permanent VBM*	Measures	Offices
School Districts				
ABC Unified	51,246	12,191		5
Azusa Unified	24,765	4,458		2
Baldwin Park Unified	26,757	4,559		3
Bassett Unified	10,623	1,697		2
Bellflower Unified	34,980	6,924		3
Beverly Hills Unified	20,727	5,182		3
Charter Oak Unified	19,785	4,001		3
Claremont Unified	23,953	5,982		2
Compton Unified	63,958	9,989		3
Culver City Unified	24,623	5,748		2
Duarte Unified	13,793	3,441		3
Eastside Union	8,886	2,035		2
El Monte City	28,215	5,233		2
El Rancho Unified	29,215	4,753		2
El Segundo Unified	10,282	2,611		2
Garvey	17,888	3,145		2
Glendora Unified	23,148	5,199		2
Hacienda La Puente Unified	52,147	11,455		2
Keppel Union	8,264	1,675		2
La Canada Unified	12,528	3,791		2
Las Virgenes Unified	33,514	8,347	1	
Little Lake City	17,062	3,039		3
Lynwood Unified	22,144	3,423		3
Monrovia Unified	22,547	4,807		3
Mountain View	14,411	2,391		2
Newhall	36,096	10,097	1	
Norwalk-La Mirada Unified	54,874	10,618		3
Palmdale	46,403	9,144		2
Palos Verdes Peninsula Unified	41,322	12,740	1	2
Pomona Unified	61,171	11,715		2
Rosemead	10,280	1,878		2
San Gabriel Unified	17,260	3,752		2
San Marino Unified	9,633	2,678		2
Saugus Union	52,529	14,027		2
South Pasadena Unified	15,120	3,767		2
Sulphur Springs Union	27,814	7,135		2
Temple City Unified	16,123	3,700		3
Walnut Valley Unified	31,213	7,729		2
West Covina Unified	27,991	5,401		3
Westside Union	34,440	8,837		2
Whittier City	31,961	6,098		2
Wilsona School	3,679	680		2
42			3	95

*Registration and Permanent VBM as of 10/20/11.



Los Angeles County **REGISTRAR-RECORDER/COUNTY CLERK**

Jurisdiction	Registration*	Permanent VBM*	Measures	Offices
High School Districts				
Antelope Valley Joint Union	148,913	33,452		2
Centinela Valley Union	57,891	9,656		2
El Monte Union	55,900	10,078		2
William S. Hart Union	128,154	34,062		2
4			0	8

Community College Districts				
Antelope Valley	156,491	35,507		2
Citrus TA2	26,302	6,477		1
Citrus TA5	22,074	4,824		1
El Camino	272,495	62,908		3
Pasadena Area TA2	36,871	9,592		1
Pasadena Area TA4	29,774	7,831		1
Pasadena Area TA6	22,712	4,519		1
Rio Hondo TA2	39,478	6,603		1
Rio Hondo TA4	36,114	6,145		1
Santa Clarita	128,132	34,055		3
6			0	15

Water Districts				
Orchard Dale	8,325	1,499		2
Palmdale	39,342	7,587		3
Pico	14,021	2,258		2
Rowland D1	3,866	637		1
4			0	8

County Water Districts				
Crescenta Valley	11,766	2,783		1
La Habra Heights	3,723	1,074		3
La Puente Valley	4,388	804		2
Sativa	2,142	341		3
Valley	20,588	3,544		2
West Valley	223	76		3
6			0	14

Total Districts			Total Measures	Total Offices
81			11	195

*Registration and Permanent VBM as of 10/20/11.



MEASURES APPEARING ON BALLOT

LOCAL JURISDICTION MEASURES – (11)

HERMOSA BEACH CITY

- Q** – Shall an ordinance be adopted as submitted by initiative petition to amend the City’s business license tax ordinance by modifying the amount of business license tax on restaurants and bars in order to increase tax revenue to the City?
- N** – Shall an ordinance be adopted as recommended by the Business License Tax Review Committee, comprised of residents and business owners, and a unanimous City Council to simplify, update and restructure the City’s business license tax Ordinance and offer incentives for new businesses?

LAS VIRGENES UNIFIED SCHOOL DISTRICT

- K** – To provide local school funding that cannot be taken by state government; retain high-quality teachers; preserve smaller class sizes; minimize teacher layoffs; and protect academic opportunities and high achievement in science, math, reading and the arts; shall the Las Virgenes Unified School District establish a local parcel tax of \$95 annually for eight years, with exemptions for seniors, independent fiscal oversight, no funds for administrator salaries, and guaranteeing every dollar stays within our community preserving quality education?

MAYWOOD CITY

- C** – Shall the Office of City Clerk of the City of Maywood be appointive?
- T** – Shall the Office of City Treasurer of the City of Maywood be appointive?

MONTEBELLO CITY

- O** – **MEASURE O:** Shall an ordinance be approved which requires franchises for providing solid waste (trash) hauling services to be awarded through a competitive bidding process requiring a public hearing and other compliance requirements to ensure fairness and transparency?

NEWHALL SCHOOL DISTRICT

- E** – Without increasing local tax rates and to protect the quality of education in neighborhood elementary schools, shall School Facilities Improvement District No. 2011-1 of the Newhall School District, repair/replace deteriorated roofs, lighting, and electrical systems; upgrade classrooms, science labs, libraries and technology; and improve energy efficiency, using savings to maintain instruction; by issuing \$60 million in bonds at legal interest rates, with mandatory audits, independent citizen oversight, no money for administrators, and all funds staying in our community benefiting local children grades K-6?

PALOS VERDES PENINSULA UNIFIED SCHOOL DISTRICT

- M** – Without increasing existing taxes and to protect the quality of education and promote student achievement shall Palos Verdes Peninsula Unified School District extend the existing school parcel taxes to fund advanced programs in math, science and technology, keep classroom technology up-to-date, attract and retain highly qualified teachers, and maintain manageable class sizes, with an exemption for seniors, a cost of living adjustment for inflation, with all money staying in our community to benefit local schools?

SAN MARINO CITY

- S** – Shall an ordinance be adopted to continue a Special Public Safety Tax for Paramedic Services, Fire Protection and Prevention and Police Protection in the City of San Marino?
- P** – Shall an ordinance be adopted to establish term limits for members of the City Council limiting them to two (2), four (4) year consecutive terms, with a hiatus of two (2) years before being eligible to hold office again as a member of the City Council?

SOUTH PASADENA CITY

- UT** – To offset state cuts and provide vital city services, shall an ordinance be adopted to extend and reduce the South Pasadena Utility User’s Tax from 8% to 7.5% to maintain police patrols, fire, paramedics and 9-1-1 emergency services and safety equipment; fix potholes; repair streets and sidewalks; maintain senior meals and services; and other essential city services, requiring equal taxpayer treatment, annual audits, with no funds for Sacramento, with the entire tax expiring in 10 years?



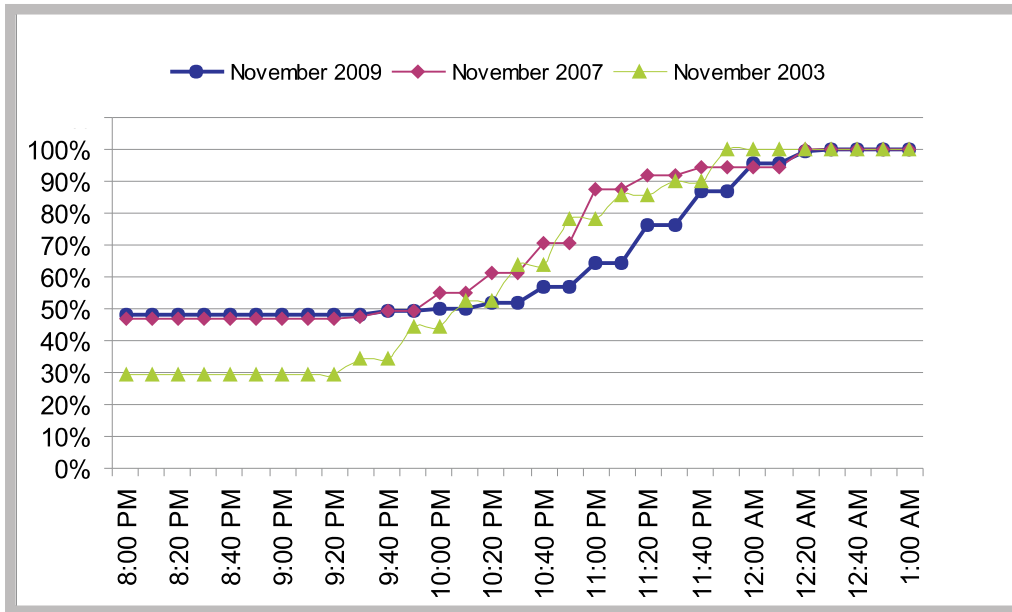
HISTORICAL VOTER REGISTRATION AND VOTER TURNOUT IN SPECIAL & CONSOLIDATED ELECTIONS

ELECTION	YEAR	REGISTRATION	TURNOUT	TURNOUT %
Consolidated Elections	11/09	2,145,437 *	282,858	13.18%
Consolidated Elections	11/07	1,561,941 *	218,156	13.97%
Special Statewide & Consolidated Elections	11/05	3,830,385 *	1,802,031	47.04%
Consolidated Elections	11/03	1,622,672 *	184,254	11.35%
Special Statewide	10/03	4,010,058 *	2,203,838	54.96%
Consolidated Elections	11/01	1,704,482 *	253,793	14.89%
Consolidated Elections	11/99	1,745,531 *	221,299	12.68%
Consolidated Elections	11/97	1,560,068 *	250,003	16.03%
Consolidated Elections	11/95	1,424,382 *	209,333	14.69%

*Reflects only registered voters active in specified election.



CONSOLIDATED ELECTIONS



(2005 was not included for this comparison, as the Consolidated Elections were held in conjunction with a Statewide Election)

VOTE BY MAIL PROCESSING

The following chart provides the number of Vote by Mail ballots counted beginning election day and the number processed and updated during the official canvass period.

2009 CONSOLIDATED ELECTIONS		2007 CONSOLIDATED ELECTIONS		2003 CONSOLIDATED ELECTIONS	
11/3/09		11/6/07		11/4/03	
DATE	VOTE BY MAIL BALLOTS COUNTED	DATE	VOTE BY MAIL BALLOTS COUNTED	DATE	VOTE BY MAIL BALLOTS COUNTED
11/3	121,947	11/6	89,468	11/04	49,812
11/6	21,800	11/9	9,324	11/7	10,559
11/10	981	11/13	10,324	11/12	282
11/13	1,115	11/16	683	11/14	137
		11/19	60	11/18	1
		11/21	1	11/20	14
TOTAL	145,843	TOTAL	109,859	TOTAL	60,805



The range of voting options available to Los Angeles County voters to cast a ballot in the November 8, 2011 Local and Municipal Consolidated Elections include:

VOTE BY MAIL

Voters have the option of becoming a Permanent Vote by Mail voter by checking off the appropriate box on the Vote by Mail application. This provides the voter with the added convenience of automatically receiving a Vote by Mail ballot every election. The last day to apply for a Vote by Mail ballot is seven (7) days prior to the election.

The following provides a list of tips if you applied for a Vote by Mail ballot and have not received it within a week after mailing your application.

- Call the Registrar-Recorder/County Clerk's office to request a replacement Vote by Mail ballot.
- Vote at the Registrar's Office during the Vote by Mail period (from 29 days prior to the election through Election Day).
- Vote at your designated neighborhood polling location on Election Day.

To be counted, all voted Vote by Mail ballots must be mailed in time to be received by the Registrar's Office by 8:00 p.m. on November 8; or voted Vote By Mail ballots that have not been returned can be dropped off at any polling place in the County no later than 8:00 p.m. on Election Day.

A voter may authorize their spouse or a designated family member to return their voted ballot to any polling place in the County or to the Registrar's Office. Under special circumstances a voter may request an emergency Vote by Mail ballot beginning October 10 through Election Day, November 8.

For additional information regarding this service or any questions regarding Vote by Mail voting, call the Document Receipt and Vote by Mail Section at (562) 466-1323 between the hours of 8:00 a.m. and 5:00 p.m., Monday through Friday or go online to www.lavote.net.

IN PERSON EARLY VOTING

Traditionally, thousands of voters walk into our Norwalk office to apply for and pick up a Vote by Mail ballot. The volume is especially high during the week prior to a major election. In-person Early Voting will be available Monday thru Friday during regular office hours from 8:00 a.m. to 5:00 p.m. In-Person Early Voting hours at the RR/CC Headquarters in Norwalk have also been extended to the following two weekends leading up to the November 8, 2011 Local and Municipal Consolidated Elections: October 29 & 30 and November 5 & 6, 2011 from 8:00 am to 4:00 pm.

VOTING AT THE POLLS

Polling places are open from 7:00 a.m. to 8:00 p.m. on Election Day. A voter's polling place location is listed on back cover of their sample ballot. If a voter is unable to find their sample ballot, They may find their polling location on our website www.lavote.net, or by calling the department at **800-815-2666**.



TRANSPORTING BALLOTS FOR TABULATION

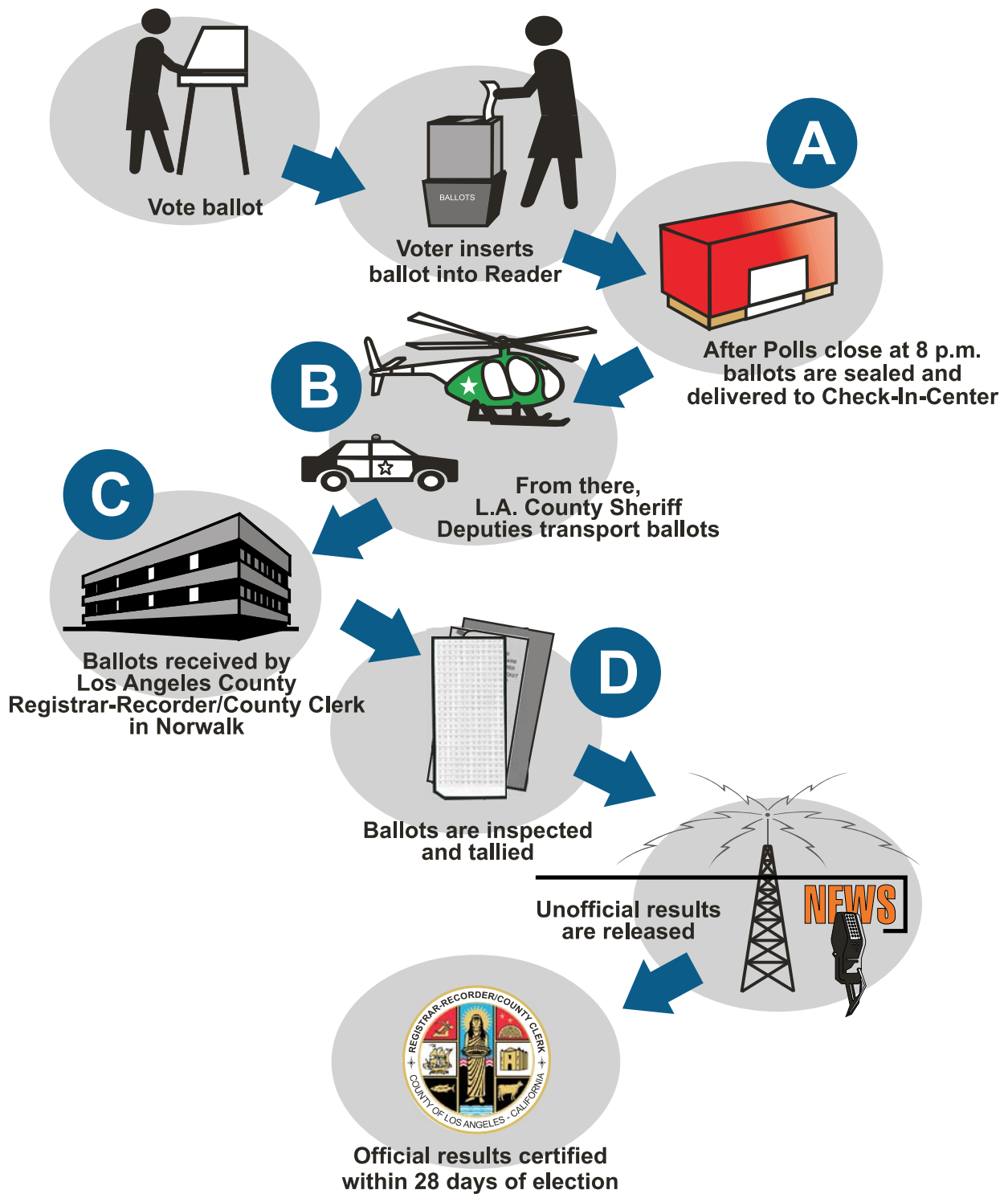
On Election Night, ballots from all 897 voting precincts are brought to the Registrar- Recorder/County Clerk's headquarters in Norwalk for tabulation.

- A** ● After the polls close at 8:00 p.m., the precinct officials must complete the paperwork to balance the number of ballots cast with the number of voters signing in and account for the number of remaining unvoted ballots. Most precincts complete this function between 9:00-9:30 p.m.
- Then, precinct officials from the 897 precincts bring their ballots and supplies to one of 33 designated check-in centers located throughout the County, usually arriving between 9:30 - 10:30 p.m.
- B** ● Sheriff Deputies transport the voted ballots from the check-in centers via helicopter or by car to Norwalk. Ballots come in from as far away as Lancaster, Palmdale and Catalina Island.
- C** ● Between 10:30 - 11:30 p.m. a large number of ballots begin to arrive at RR/CC headquarters.
- D** ● Prior to tabulation, all ballots must be checked-in, taken out of boxes, inspected and prepared for counting.
- Ballots are moved into the tabulation center in a continuous flow. There, operators load the ballot cards onto card readers.
 - There are 8 counting stations, each with two card readers, for a total of 16 card readers.
 - Because there is no specific order of processing/counting, ballots from locations closer to Norwalk are comingled with ballots from more distant destinations. Therefore, ballots from locations close to Norwalk are not necessarily counted first.

Thousands of dedicated individuals are involved in the ballot transport, preparation and tabulation. Los Angeles County is the largest county electoral jurisdiction in the U.S.



ELECTION DAY / NIGHT BALLOT FLOW CHART



There are three categories of ballots which cannot be processed on Election Night:

- 1 Vote by Mail ballots (those turned in at voting locations and those received by mail just before or on Election Day).
- 2 Provisional ballots voted at the polls.
- 3 Write-in ballots.

NOTE: All valid ballots in the above categories are counted prior to official certification of the results.

1 VOTE BY MAIL BALLOTS TURNED IN AT POLLING LOCATIONS

Many Vote by Mail voters drop off their ballots at a polling place or at RR/CC headquarters on Election Day. We receive these ballots very late on Election Night. All Vote by Mail ballots must be pre-processed before they are counted. We must verify every Vote by Mail voter's signature prior to opening the Vote by Mail ballot envelopes to remove the ballots in preparation for counting.

2 PROVISIONAL BALLOTS

Provisional ballots are issued at the polls when a voter's name is not listed in the poll roster, or when our records indicate the voter was already sent a Vote by Mail ballot. Provisional ballots are sealed in special envelopes at the polls and must be individually researched and verified at the Registrar-Recorder/County Clerk's Office before ballots are counted or rejected in accordance with election laws. Once a provisional voter's eligibility to vote is verified, the ballot is counted.

3 BALLOTS WITH WRITE-IN VOTES

When a voter chooses to vote for a write-in candidate whose name is not printed on the ballot, that ballot cannot be counted on Election Night. Each ballot containing a write-in vote must be individually reviewed to determine whether or not the write-in vote is for a qualified write-in candidate and whether or not the voter overvoted (i.e. voted for a candidate on the ballot and also voted for a write-in candidate for the same office). When an overvote occurs, neither vote can be counted although; the rest of the ballot selections will be counted. Due to the individual scrutiny involved, no portion of any ballot containing a write-in vote is counted on Election Night. **(Vote tallies for write-in candidates are not available until the conclusion of the official canvass because each ballot containing a write-in vote must be set aside for manual review.)**



1% MANUAL TALLY AUDIT

By law, a random sample of ballots from every election must be manually tallied to verify the voting system count. A minimum of all votes cast in one percent (1%) of the precincts is included in this process. The sample must include all contests and measures on the ballot. The Automatic Manual Tally is open to the public. (E.C. 15360)

SUMMARY

Supplemental ballot counting of Vote by Mail, provisional and ballots with write-in votes occurs in sequential order after the election but before certification of official results (i.e. all Vote by Mail ballots must be verified and cleared prior to verifying provisional ballots in order to ensure there are no duplicates among these categories). These ballots are not segregated by district prior to counting. Therefore, the number of outstanding ballots for any specific electoral district is unknown until after these ballots are tabulated.

California law requires election authorities to complete and certify results within 28 days. This provision of the law recognizes the complexity of completing the ballot count and conducting a thorough audit of the election results to ensure accuracy.

Supplemental ballot counting begins at 2:00 p.m. every Friday and Tuesday throughout the canvass period. The first update of the count will begin on Friday, November 11 at 2:00 p.m. We anticipate the majority of the outstanding Vote by Mail ballots will be included by the Tuesday, November 15 update. Due to the extra research required to validate provisional ballots, these ballots are usually the last to be tallied prior to the completion of the official canvass. Please note that the 2:00 p.m. time indicates the start of ballot tabulation. Depending on the number of ballots to be tabulated; updated results may not be available until half past the hour.

Candidates and the public are invited to observe supplemental ballot counting and the manual tally of ballots from the randomly selected 1% of the voting precincts. After Election Night, the schedule of supplemental ballot counting will also be posted on the entrance door of our office in Norwalk and on our website www.lavote.net.

We realize it is difficult for candidates/campaigns involved in close contests to wait and know the results of the election. The legally mandated processes described above are utilized to ensure that every vote is counted and included in the official final election returns.



The following provides the canvass schedule of events for supplemental ballot counting.

NOVEMBER 8, 2011 LOCAL AND MUNICIPAL CONSOLIDATED ELECTIONS SCHEDULED TALLY UPDATES

Friday, November 11 - 2:00 p.m.*
1st Ballot Counting Update

Tuesday, November 15 - 2:00 p.m.*
2nd Ballot Counting Update

Friday, November 18 - 2:00 p.m.*
3rd Ballot Counting Update

Monday, November 21 - 2:00 p.m.*
4th Ballot Counting Update

Board of Supervisors declares official results Tuesday, November 22, 2010

*Scheduled times represent the start of ballot processing and are subject to change. Election results will be updated and posted after ballot processing is completed. For updated election results visit www.lavote.net or call us at (562) 466-1323.

PUBLIC OBSERVATION

The official election canvass will take place at RR/CC Headquarters in Norwalk beginning Wednesday, November 9, 2011 through Friday, November 18, 2011.

The ballot counting process is open to public observation. If you wish to observe the process, you may go to the 3rd floor, Room 3001 to check in and you will be issued an Observer's badge and guidelines.



WHO CAN REQUEST A RECOUNT?

Any voter of the state may file a request. (E.C. 15620)

TIMING OF REQUEST

The request must be filed within five (5) calendar days after the completion of the official canvass. The canvass is complete when the elections official signs the Certification of the Election Results. (E.C. 15620)

EXCEPTIONS

For statewide contests, the request must be filed within five (5) calendar days beginning on the 29th day after the election.

NOTICE OF RECOUNT

A notice stating the date and place of the recount will be posted by the elections official at least one day prior to the recount and the following persons will be notified in person or by telegram. (E.C. 15628). Notices are issued to the following parties:

- All candidates for the office being recounted.
- Authorized representatives for gubernatorial candidates, if the race for gubernatorial delegates is to be recounted.
- Proponents of any initiative of referendum or persons filing ballot arguments for or against any initiative, referendum or measure to be recounted.
- Secretary of State if the recount is for candidates for any federal or state office, delegates to a national convention, or any state measure.

A copy of the results of any recount conducted shall be posted conspicuously in the office of the elections official. For a current cost breakdown, please contact the Election Coordination Section at (562) 462-2626.



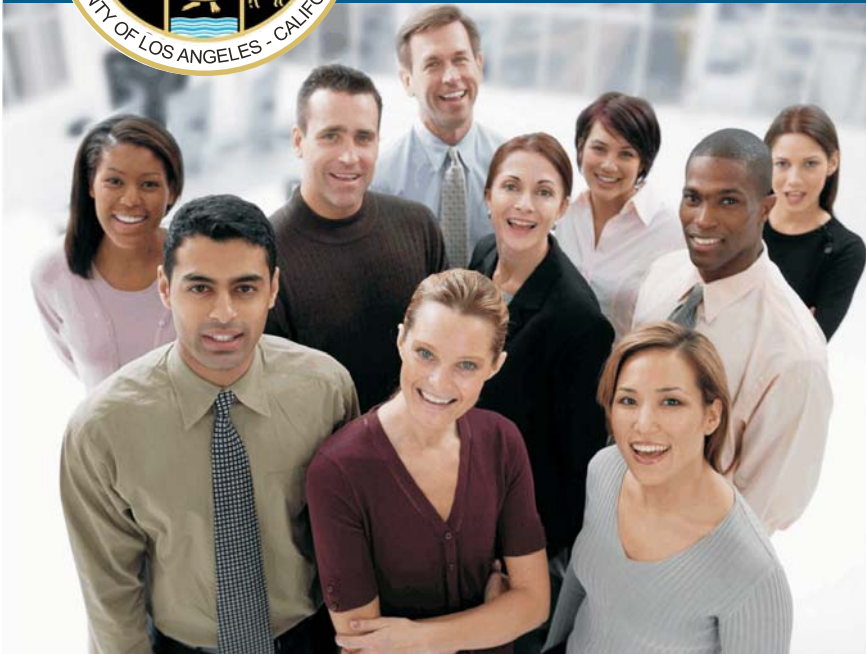
2012 SCHEDULED ELECTIONS (As of October 25, 2011)

ELECTION DATE	ELECTION	CLOSE OF REGISTRATION
June 5, 2012	STATEWIDE DIRECT PRIMARY ELECTION Election Tally Type: InkaVote Voting System (CONSOLIDATED ELECTIONS)	May 21, 2012
November 6, 2012	GENERAL ELECTION Election Tally Type: InkaVote Voting System (CONSOLIDATED ELECTIONS)	October 22, 2012





Stay Connected



Did you know there are many ways to stay connected with the Registrar-Recorder/County Clerk? Follow the RR/CC on its website, Facebook, Twitter and other social networks. Let the RR/CC be your life historian.

Access our many services or find our latest tweets, video, audio links, and upcoming election information at **lavote.net** and the array of services we provide to the citizens of Los Angeles County.



Services and information available on

www.lavote.net

REGISTER TO VOTE

VOTE BY MAIL

BECOME A POLLWORKER

FIND YOUR POLLING LOCATION

ELECTION RESULTS

BIRTH & DEATH CERTIFICATES

SAMPLE BALLOT LOOK UP

MARRIAGE LICENSES & CEREMONIES

PROPERTY RECORDS

MILITARY DISCHARGE RECORDS

FICTITIOUS BUSINESS NAMES

MULTILINGUAL SERVICES

NOTARY PUBLIC OATH & BOND

DOMESTIC PARTNERSHIP

ELECTION CALENDAR

PROCESS SERVER

LEGAL DOCUMENT ASSISTANCE

PROFESSIONAL PHOTOCOPIER

UNLAWFUL DETAINER ASSISTANCE

NOTARY AUTHENTICATION

CERTIFICATION OF REGISTERED
TRANSLATORS/INTERPRETERS
INFORMATION

CAMPAIGN FINANCE DOCUMENTS

ACCESSIBILITY SERVICES