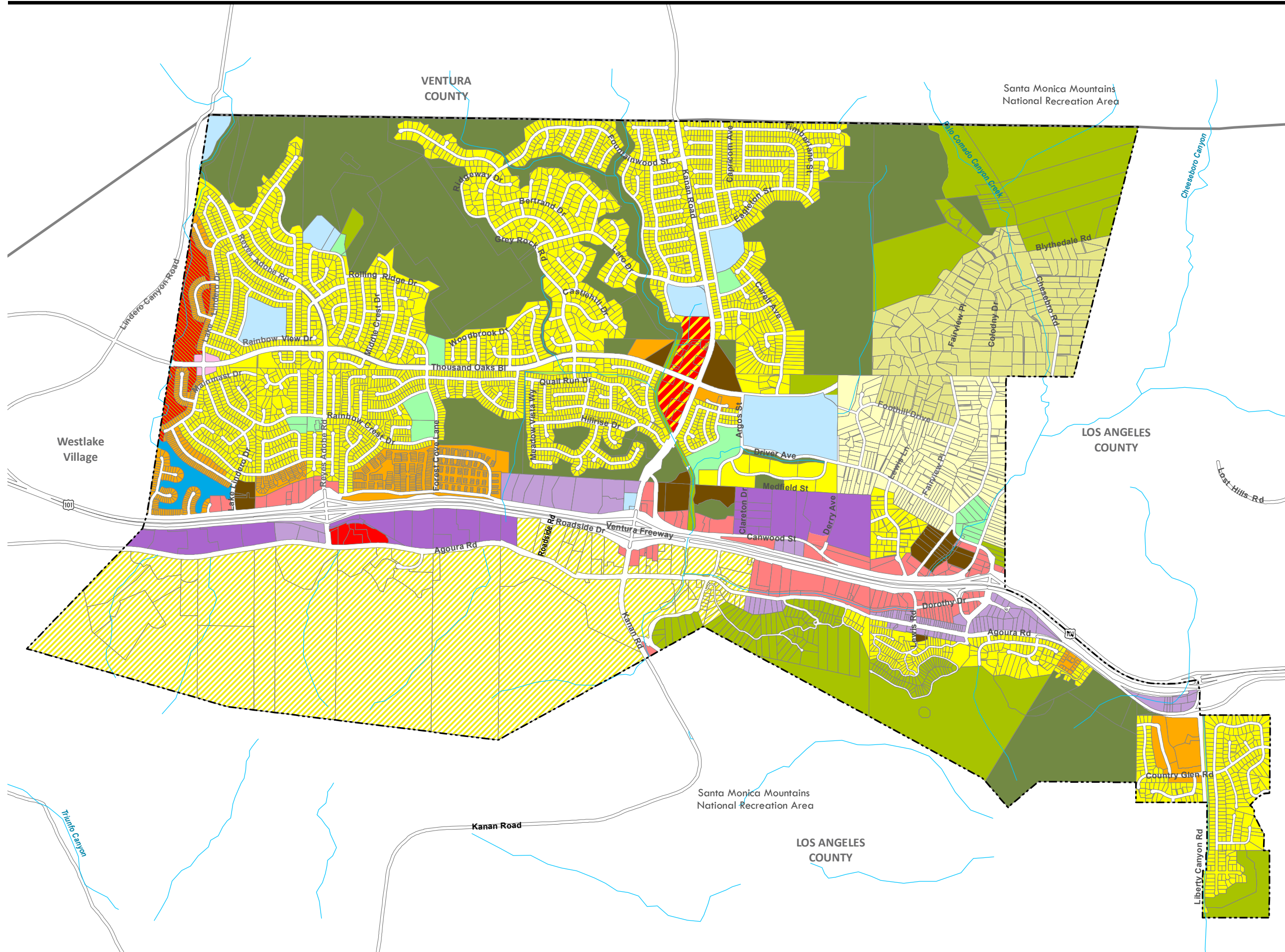


CITY of AGOURA HILLS General Plan Update

LAND USE DIAGRAM

Legend

- Residential Very Low Density (0.2-1.0 du/ac) (RV)
- Residential Low Density (1-2 du/ac) (RL)
- Residential Single Family (2-6 du/ac) (RS)
- Residential Medium Density (6-15 du/ac) (RM)
- Residential High Density (15-25 du/ac) (RH)
- Commercial Neighborhood Center (CN)
- Commercial Shopping Center (CS)
- Commercial Shopping Center / Mixed Use (CS-MU)
- Commercial Retail Service (CRS)
- Commercial Recreation (CR)
- Business Park – Office Retail (BP-OR)
- Business Park-Manufacturing (BP-M)
- Planned Development District (PD)
- Public Facility (PF)
- Local Park (P)
- Open Space – Restricted (OS-R)
- Open Space – Deed Restricted (OS-DR)
- City Limits
- County Boundary
- Open Water
- Streams



Source: City of Agoura Hills, May 2011
 D21377_Agoura_Hills\GPLU_Update.mxd
 Date Revised: June 30, 2011

