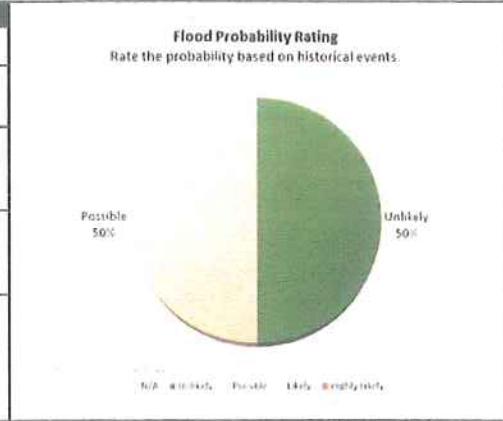


Flood

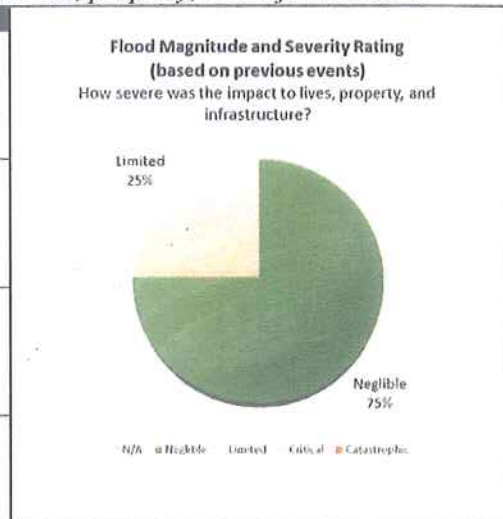
Probability - Rate the probability based on historical events.

Rating	Description
N/A	Not Applicable
Unlikely	Extremely rare with no documented history of occurrence or events OR an annual probability less than 0.001.
Possible	Rare occurrences with at least one documented or anecdotal historic event OR an annual probability between 0.01 and 0.001.
Likely	Occasional occurrences with at least two or more documented historic events OR an annual probability that is between 0.1 and 0.01.
Highly Likely	Frequent events with a well-documented history of occurrence OR an annual probability that is greater than 0.1.

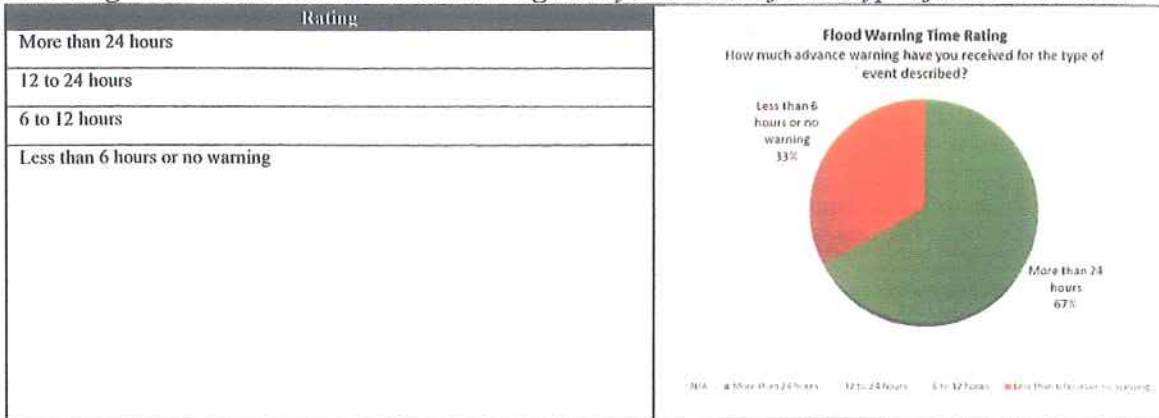


Magnitude and Severity - How severe was the impact to lives, property, and infrastructure?

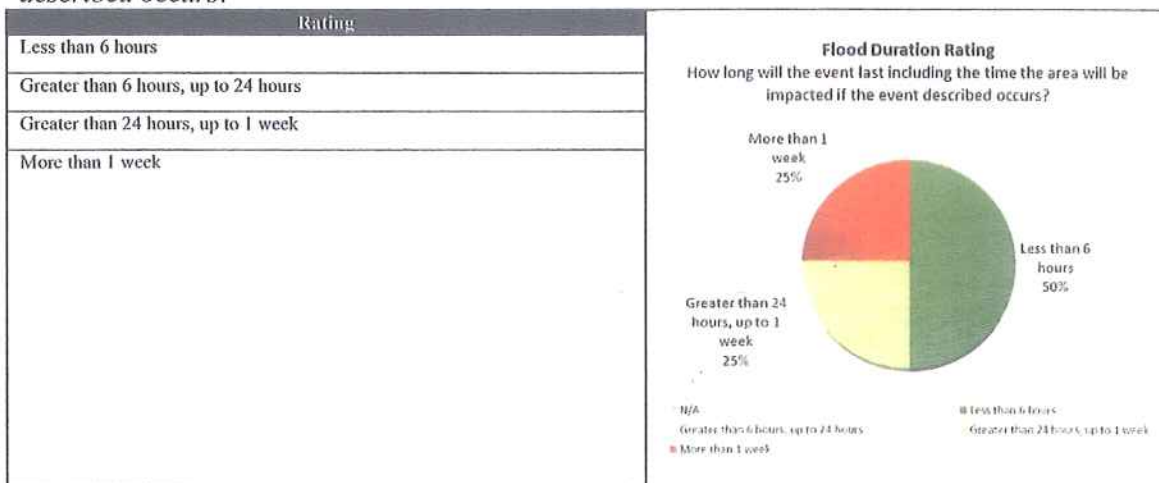
Rating	Description
Negligible	Negligible property damages (less than 5% of critical and non-critical facilities and infrastructure). Injuries or illnesses are treatable with first aid and there are no deaths. Negligible quality of life lost. Shut down of critical facilities for less than 24 hours.
Limited	Slight property damages (greater than 5% and less than 25% of critical and non-critical facilities and infrastructure). Injuries or illnesses do not result in permanent disability and there are no deaths. Moderate quality of life lost. Shut down of critical facilities for more than 1 day and less than 1 week.
Critical	Moderate property damages (greater than 25% and less than 50% of critical and non-critical facilities and infrastructure). Injuries or illnesses result in permanent disability and at least one death. Shut down of critical facilities for more than 1 week and less than 1 month.
Catastrophic	Severe property damages (greater than 50% of critical and non-critical facilities and infrastructure). Injuries or illnesses result in permanent disability and multiple deaths. Shut down of critical facilities for more than 1 month.



Warning Time - How much advance warning have you received for the type of event described?



Duration - How long will the event last including the time the area will be impacted if the event described occurs?



Landslide

Probability - Rate the probability based on historical events.

Rating	Description
N/A	Not Applicable
Unlikely	Extremely rare with no documented history of occurrence or events OR an annual probability less than 0.001.
Possible	Rare occurrences with at least one documented or anecdotal historic event OR an annual probability between 0.01 and 0.001.
Likely	Occasional occurrences with at least two or more documented historic events OR an annual probability that is between 0.1 and 0.01.
Highly Likely	Frequent events with a well-documented history of occurrence OR an annual probability that is greater than 0.1.

Landslide Probability Rating
Rate the probability based on historical events.

Rating	Percentage
Unlikely	33%
Possible	67%

Legend: N/A (Not Applicable), Unlikely, Possible, Likely, Highly Likely

Magnitude and Severity - How severe was the impact to lives, property, and infrastructure?

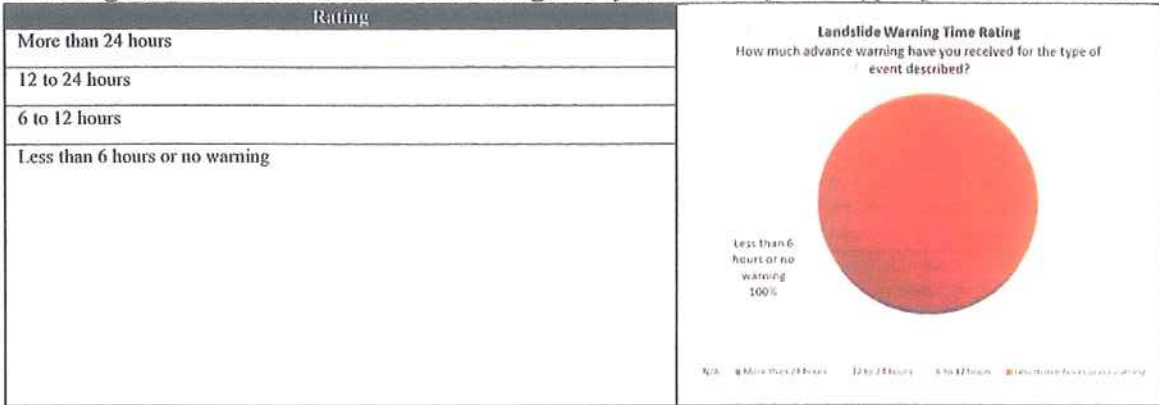
Rating	Description
Negligible	Negligible property damages (less than 5% of critical and non-critical facilities and infrastructure). Injuries or illnesses are treatable with first aid and there are no deaths. Negligible quality of life lost. Shut down of critical facilities for less than 24 hours.
Limited	Slight property damages (greater than 5% and less than 25% of critical and non-critical facilities and infrastructure). Injuries or illnesses do not result in permanent disability and there are no deaths. Moderate quality of life lost. Shut down of critical facilities for more than 1 day and less than 1 week.
Critical	Moderate property damages (greater than 25% and less than 50% of critical and non-critical facilities and infrastructure). Injuries or illnesses result in permanent disability and at least one death. Shut down of critical facilities for more than 1 week and less than 1 month.
Catastrophic	Severe property damages (greater than 50% of critical and non-critical facilities and infrastructure). Injuries or illnesses result in permanent disability and multiple deaths. Shut down of critical facilities for more than 1 month.

Landslide Magnitude and Severity Rating (based on previous events)
How severe was the impact to lives, property, and infrastructure?

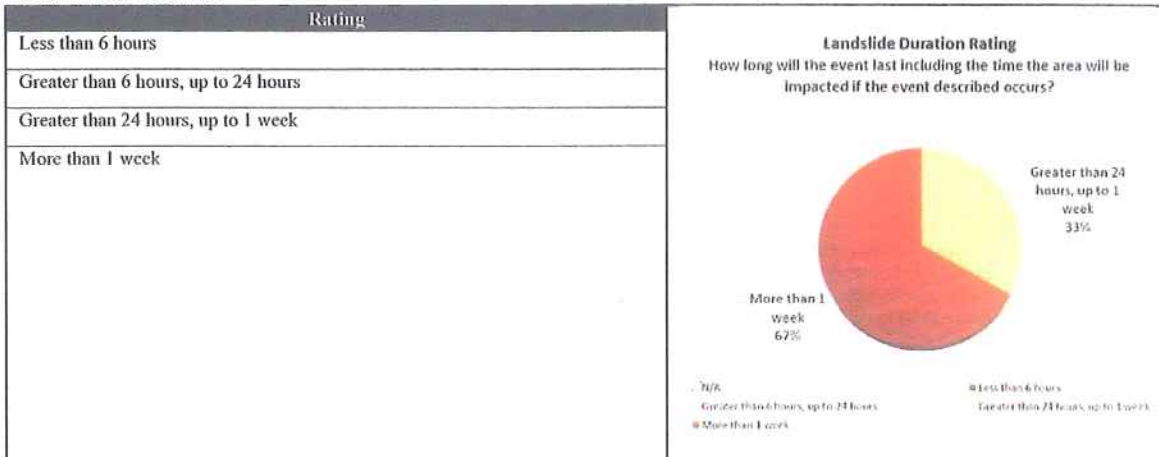
Rating	Percentage
Negligible	33%
Limited	67%

Legend: N/A, Negligible, Limited, Critical, Catastrophic

Warning Time - How much advance warning have you received for the type of event described?

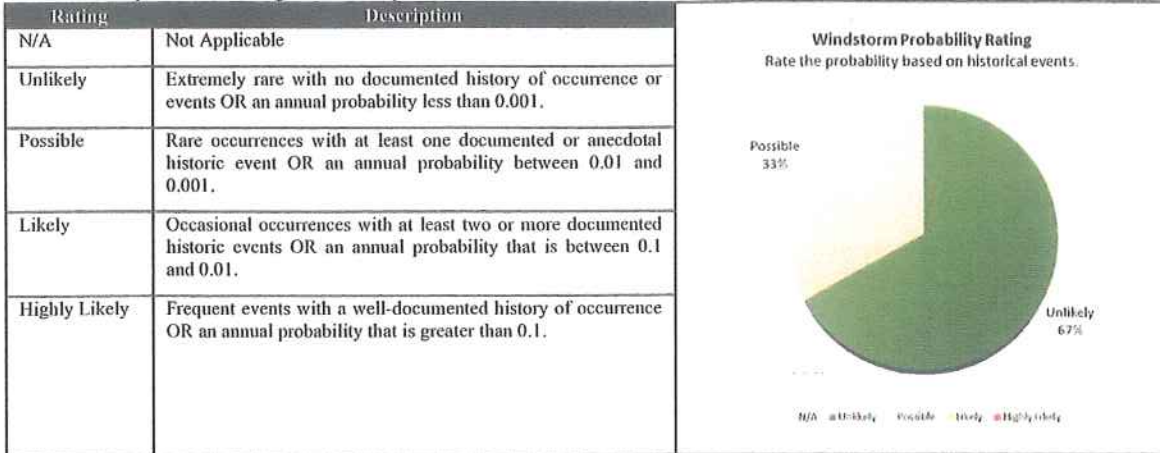


Duration - How long will the event last including the time the area will be impacted if the event described occurs?

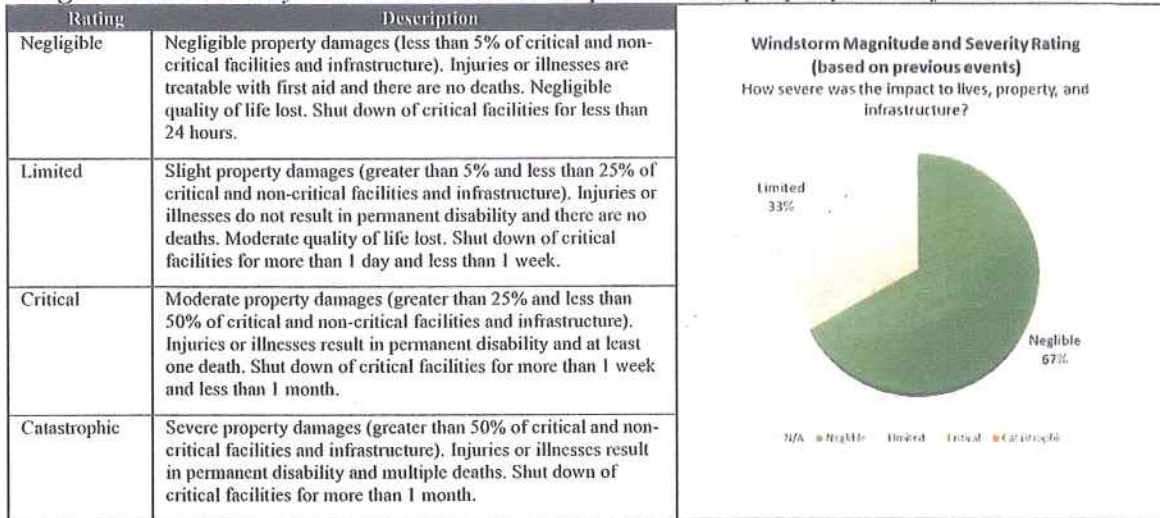


Severe Windstorm

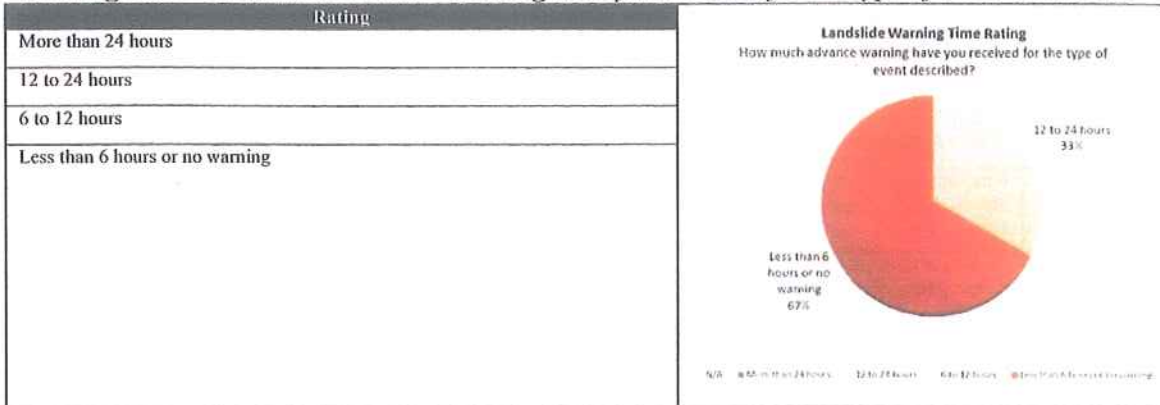
Probability - Rate the probability based on historical events.



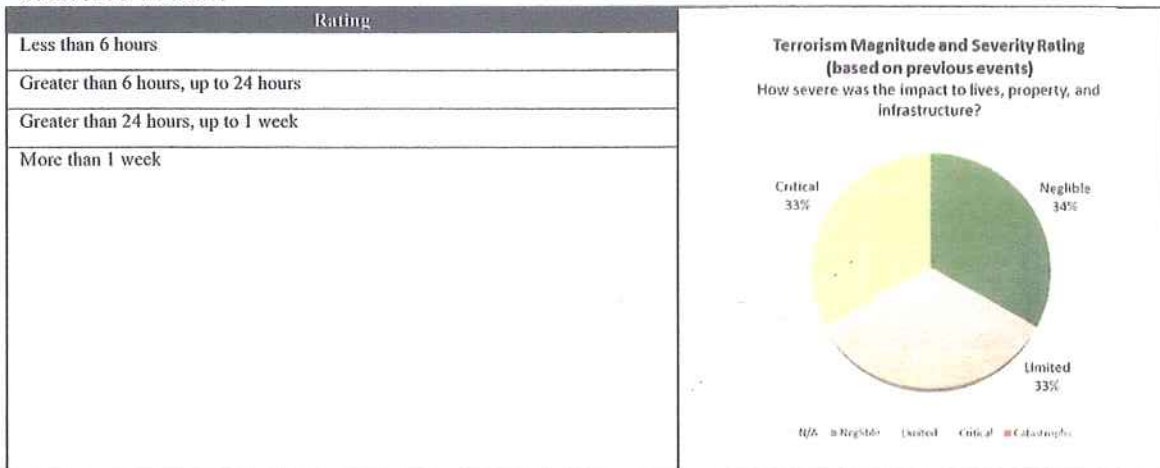
Magnitude and Severity - How severe was the impact to lives, property, and infrastructure?



Warning Time - How much advance warning have you received for the type of event described?



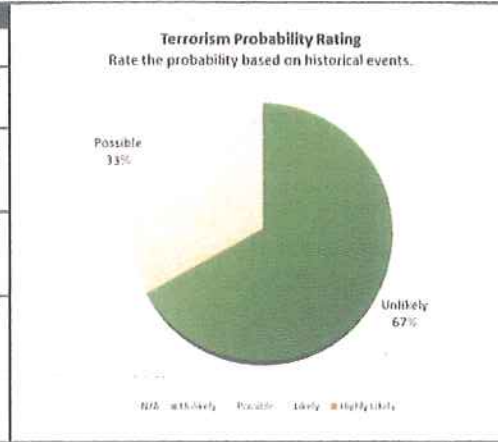
Duration - How long will the event last including the time the area will be impacted if the event described occurs?



Terrorism

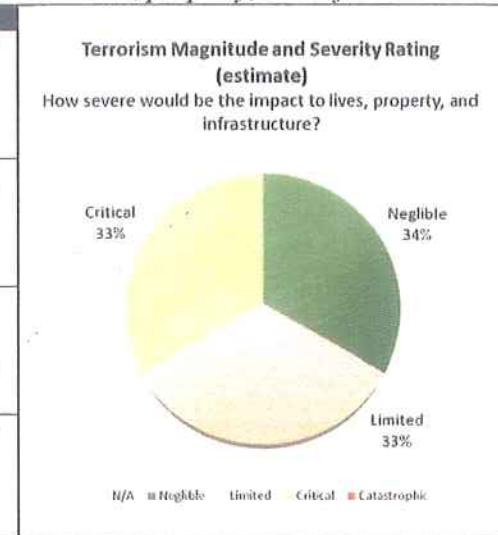
Probability - Rate the probability based on historical events.

Rating	Description
N/A	Not Applicable
Unlikely	Extremely rare with no documented history of occurrence or events OR an annual probability less than 0.001.
Possible	Rare occurrences with at least one documented or anecdotal historic event OR an annual probability between 0.01 and 0.001.
Likely	Occasional occurrences with at least two or more documented historic events OR an annual probability that is between 0.1 and 0.01.
Highly Likely	Frequent events with a well-documented history of occurrence OR an annual probability that is greater than 0.1.

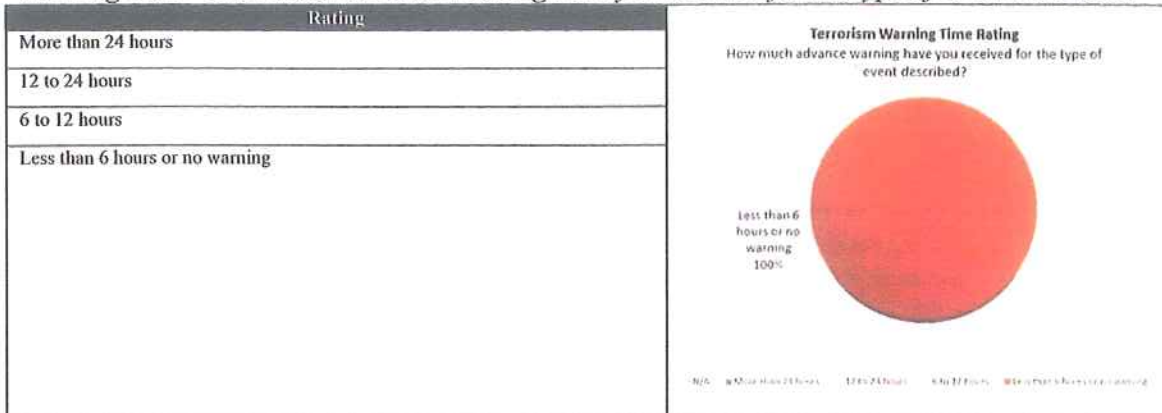


Magnitude and Severity - How severe would be the impact to lives, property, and infrastructure?

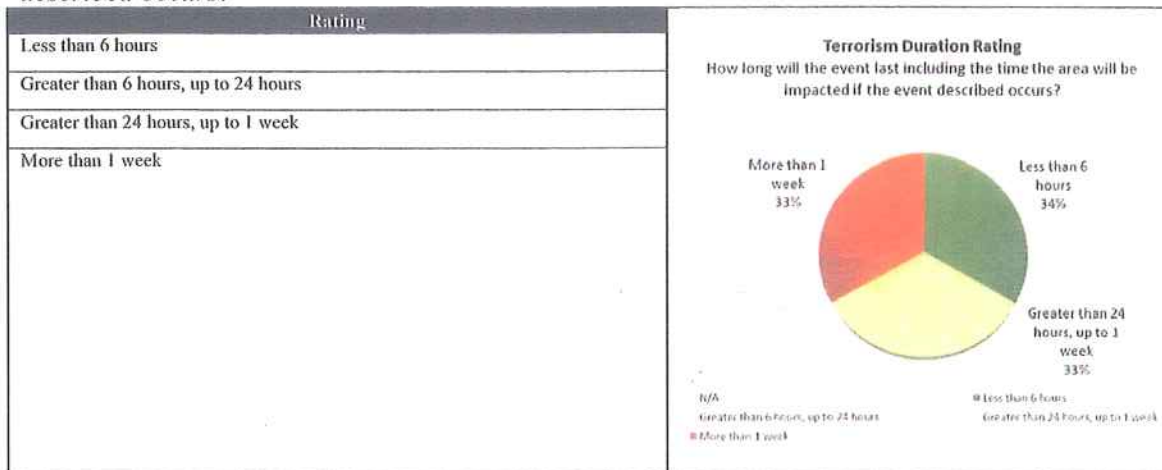
Rating	Description
Negligible	Negligible property damages (less than 5% of critical and non-critical facilities and infrastructure). Injuries or illnesses are treatable with first aid and there are no deaths. Negligible quality of life lost. Shut down of critical facilities for less than 24 hours.
Limited	Slight property damages (greater than 5% and less than 25% of critical and non-critical facilities and infrastructure). Injuries or illnesses do not result in permanent disability and there are no deaths. Moderate quality of life lost. Shut down of critical facilities for more than 1 day and less than 1 week.
Critical	Moderate property damages (greater than 25% and less than 50% of critical and non-critical facilities and infrastructure). Injuries or illnesses result in permanent disability and at least one death. Shut down of critical facilities for more than 1 week and less than 1 month.
Catastrophic	Severe property damages (greater than 50% of critical and non-critical facilities and infrastructure). Injuries or illnesses result in permanent disability and multiple deaths. Shut down of critical facilities for more than 1 month.



Warning Time - How much advance warning have you received for the type of event described?



Duration - How long will the event last including the time the area will be impacted if the event described occurs?



SECTION 16. ANNEX E: PLANNING AND PUBLIC INVOLVEMENT

Planning

Representatives from each city within the Las Virgenes-Malibu Council of Governments regularly meet to discuss mitigation efforts and plan future activities. As members of Disaster Management Area B, each city participates in quarterly planning meetings as well as post-DMA meetings with LVMCOG member cities. The following minutes provide a sample of the planning topics discussed at the DMA meetings. LVMCOG emergency management representatives also meet separately to discuss issues specific to the LVMCOG.

SAMPLE

Disaster Management Area B Meeting Minutes

CITY OF MALIBU

MINUTES JUL 14, 2011 11:48AM TO 12:00 PM ZUMA ROOM

MEETING CALLED BY	Standing Area B Local Hazard Mitigation Plan (LHMP) Meeting
TYPE OF MEETING	Quarterly Meeting
HOST / FACILITATOR	Debbie Pedrazzoli in Kelvin Tainatongo (Chair) absence
NOTE TAKER	Debbie Pedrazzoli
ATTENDEES	<p>CITIES PRESENT: Anne Ambrose – City of Palmdale, Director of Public Safety and Community Relations Brad Davis – City of Malibu, Emergency Preparedness Coordinator Debbie Larson – City of Calabasas, Public Safety Coordinator Donna Nuzzi – City of Santa Clarita, Emergency Services Supervisor Jim Jordan – City of Calabasas, Director of Public Safety & Emergency Preparedness Kerry Kallman – City of Westlake Village, Administrative Analyst</p> <p>DMAC PRESENT: Deb Pedrazzoli – Area B Disaster Management Area Coordinator (DMAC)</p> <p>AGENCY PARTNERS PRESENT: None</p> <p>GUESTS PRESENT: None</p> <p>CITIES NOT PRESENT: Deanna Graybill, City of Hidden Hills, Deputy City Clerk Kelvin Tainatongo, City of Lancaster, Assistant to the City Manager Louis Celaya – City of Agoura Hills, Assistant to the City Manager</p>

Agenda topics

INTRODUCTIONS **DEB P**

The Meeting was called to order at 11:48am.		
DISCUSSION Introductions were not necessary.		
CONCLUSIONS N/A		
ACTION ITEMS	PERSON RESPONSIBLE	DEADLINE
N/A	N/A	N/A

TOPIC/DISCUSSION **DEB P**

DISCUSSION	<p>Overview of the FEMA’s “Local Mitigation Plan Review Crosswalk”:</p> <ul style="list-style-type: none"> • Deb P. began reviewing with those in attendance the FEMA’s Local Mitigation Plan Review • Crosswalk page A-5 covering the Planning Process which included the following items: <ul style="list-style-type: none"> • Documentation of Planning Process • Requirement 201.6(b) <ul style="list-style-type: none"> ○ Public comment ○ Neighboring communities/agencies involvement ○ Review/incorporation of existing documents • Requirement 201.6(c)(1) • Document how it was prepared, who was involved and how the public was involved. • Document who was involved in the current planning process. • Document how the public was involved. • Document the opportunities for neighboring communities, agencies, businesses, academia, nonprofits, and other interested parties to be involved in the planning process. • Document the review and incorporation of existing plans, studies, reports, and technical information. • Document a narrative description of the process followed to prepare the plan. • Document how the planning team reviewed and analyzed each section of the plan whether it was revised or not. <p>Handouts.</p> <ul style="list-style-type: none"> • Copy of FEMA’s Local Mitigation Plan Review Crosswalk dated July 1, 2008 page A-5. • Next month’s topic • Continuation of FEMA’s Local Mitigation Plan Review Crosswalk dated July 1, 2008 starting on page A-6 Risk Assessment – Identifying Hazards and Profiling Hazards. 	
CONCLUSIONS	N/A	
ACTION ITEMS	PERSON RESPONSIBLE	DEADLINE
N/A	N/A	N/A

ROUNDTABLE ALL

DISCUSSION	<ul style="list-style-type: none"> • Discussion ensued by all in attendance regarding public involvement (ex. newspaper ad, websites, and community meetings). • City of Santa Clarita posts a survey on their website for public comment. • Donna N. will send out a copy of the survey. • Anne A. City of Palmdale requested that Deb P. send out the link to the Crosswalk. 		
CONCLUSIONS	N/A		
ACTION ITEMS	PERSON RESPONSIBLE	DEADLINE	
Send out copy of City of Santa Clarita on-line HazMit survey. Send out link to Crosswalk.	Donna N. Deb P.	11/10/11	
		11/10/11	
OBSERVERS	N/A		
RESOURCE PERSONS	N/A		
SPECIAL NOTES	<p>12:00 PM MEETING ADJOURNED. Next Area B LHMP Meeting – Thursday, Nov 10, 2011 promptly following (approximately 12 Noon) the Area B Board Meeting at the City of Hidden Hills. Note meeting had to be moved from Oct 13 to Nov 10 due to the Area B Meeting and EOC Tour at the Getty Center on Oct 13.</p>		

Public Participation and Involvement

The public participated in the original 2005 Multi-Jurisdictional Hazard Mitigation Plan (HMP) and this update. Public participation was enabled through a variety of means that included:

- An online Disaster Preparedness Risk Survey
- Public Announcements
- City Council Meetings

Disaster Preparedness Risk Survey

A survey was published to allow members of the public to provide their input on local area hazards, preparedness efforts, suggestions for mitigation and improvement, and the historic consequences of disasters. The results of the Survey are provided in [Annex C](#).

The survey was distributed and publicized via city websites, publically available forms, newspapers (link to the survey), and during community training events. The figure below provides sample of an announcement that appeared in the Acorn newspaper.

Survey underway

2012-02-16 / Community

The Las Virgenes- Malibu Council of Governments is conducting a survey to determine the level of disaster preparedness in the community and, in turn, identify potential local area risks. The data provided will educate residents and help them plan better for potential disasters in Calabasas and nearby communities. The survey is administered and maintained by MLC and Associates, Inc. A link to the survey is at [http:// www.cityofcalabasas.com/disastersurvey.html](http://www.cityofcalabasas.com/disastersurvey.html). Questions can be emailed to MLC@MLCandassociates.com.

Figure 71: Acorn Newspaper Survey Announcement

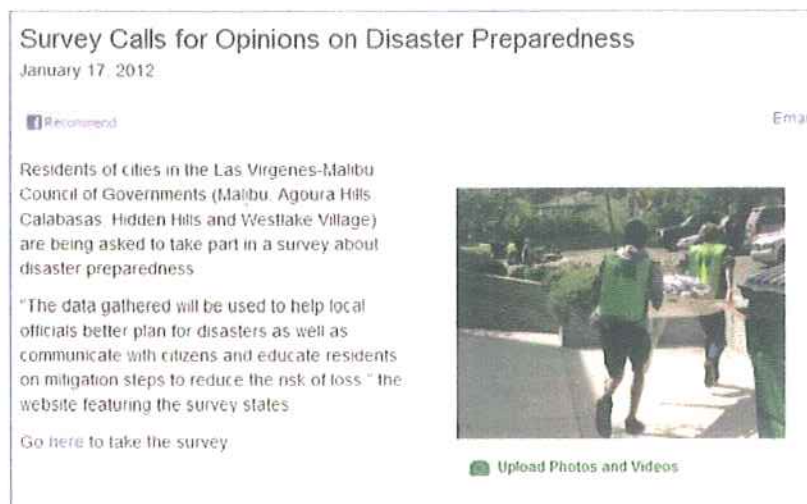


Figure 72: Agoura Hills and Malibu Patch Survey Announcement

Public Announcements and Information

In addition to the Disaster Preparedness Risk Survey, each city distributes Emergency and Disaster Mitigation information via their websites and city-operated television channels. Copies of the Multi-Jurisdictional Hazard Mitigation Plan are made available on each City's website. The public is invited to download and review the plans and provide their comments. Furthermore, the public is invited to participate in mitigation and training events (as applicable) during the year.

Public Safety corner Westlake Village
Disaster Response Team:
Prepared To Assist Public Safety Officials When Called Upon

The City of Westlake Village Disaster Response Team (DRT) was formed in 1995 to assist local fire and Sheriff's personnel in case of emergency. The 20+ member group also assists with traffic control and first aid at community events. Westlake Village DRT members receive a comprehensive 20 hour Community Emergency Response Team (CERT) training. The Los Angeles County Fire Department will be offering the next CERT training starting on September 8. The seven-week classroom training will meet on Tuesday nights from 6:30 - 9:00 pm and will conclude on October 20. These in-depth trainings will give residents knowledge on a host of topics including: Disaster Preparedness, Disaster Fire Suppression, Disaster Medical Operations, Light Search and Rescue Techniques, and Disaster Psychology. On Saturday, October 24 participants will take part in a Disaster Simulation Drill from 9:00 am to Noon. The CERT training is free and will be held in the Agoura Hills City Hall Community Room located at 30001 Ladbroke Court in Agoura Hills. All residents are encouraged to take part in the CERT training regardless whether they are interested or not in joining the Westlake Village DRT.

"Golden Guardian Earthquake Drill" The DRT will be participating in two additional exercises in 2012. The first will be a CERT Drill exercise on September 12 at the Agoura Hills City Hall. Los Angeles County Fire Department Battalion Five will be hosting the drill and it will include CERT and DRT members from Westlake Village, Agoura Hills, Calabasas, and Malibu. The exercise will simulate the set-up and management of a mass casualty triage area.

On Saturday, November 14, Los Angeles County Public Health will be holding a "Point of Distribution" (POD) exercise at the Agoura Hills/Calabasas Community Center. CERT and DRT team members will join staff from the cities of Westlake Village, Agoura Hills, Calabasas, Hidden Hills and Malibu in assisting Los Angeles County Public Health distribute free flu shots to residents. Planning for this exercise is still underway and more detailed information will follow.

If you are interested in learning more about the City's Disaster Response Team or attending the upcoming CERT trainings, please call Kerry Kallman, Administrative Analyst, at City Hall 818-706-1613.

Figure 73: Westlake Village DRT and Exercise Announcement

City Council Meetings

Each City Council reviewed and adopted the original 2005 Multi-Jurisdictional Hazard Mitigation Plan and this update. During City Council meetings, members of the public were invited to provide their feedback and comments regarding the HMP. Likewise, the revised HMP was presented at City Council meetings for review and feedback.

SECTION 17. ANNEX F: FLOOD INSURANCE RATE MAPS

This section provides selected Flood Insurance Rate Maps (FIRM) for the cities within the Las Virgenes-Malibu Council of Governments. This information is provided for planning purposes and is not a predictor of future events. The following FIRM notes apply to the maps included.

NOTES TO USERS

This map is for use in administering the National Flood Insurance Program. It does not necessarily identify all areas subject to flooding, particularly from local drainage sources of small size. The community map repository should be consulted for possible updated or additional flood hazard information.

To obtain more detailed information in areas where **Base Flood elevations (BFEs)** and/or **floodways** have been determined, users are encouraged to consult the Flood Profiles and Floodway Data and/or Summary of Stillwater Elevations tables contained within the Flood Insurance Study (FIS) report that accompanies this FIRM. Users should be aware that BFEs shown on the FIRM represent rounded whole-foot elevations. These BFEs are intended for flood insurance rating purposes only and should not be used as the sole source of flood elevation information. Accordingly, flood elevation data presented in the FIS report should be utilized in conjunction with the FIRM for purposes of construction and/or floodplain management.

Coastal Base Flood Elevations shown on this map apply on landward of 0.0' North American Vertical Datum of 1988 (NAVD 88). Users of this FIRM should be aware that coastal flood elevations are also provided in the Summary of Stillwater Elevations table in the Flood Insurance Study report for this jurisdiction. Elevations shown in the Summary of Stillwater Elevations table should be used for construction and/or floodplain management purposes when they are higher than the elevations shown on this FIRM.

Boundaries of the **floodways** were computed at cross sections and interpolated between cross sections. The floodways were based on hydraulic considerations with regard to requirements for the National Flood Insurance Program. Floodway widths and other pertinent floodway data are provided in the Flood Insurance Study report for this jurisdiction.

Certain areas not in Special Flood Hazard Areas may be protected by **flood control structures**. Refer to Section 2.4 "Flood Protection Measures" of the Flood Insurance Study report for information on flood control structures for this jurisdiction.

The **projection** used in the preparation of this map was Universal Transverse Mercator (UTM) zone 11. The **horizontal datum** was NAD83, GRS1980 spheroid. Differences in datum, spheroid, projection or UTM zones used in the production of FIRMs for adjacent jurisdictions may result in slight positional differences in map features across jurisdiction boundaries. These differences do not affect the accuracy of this FIRM.

Flood elevations on this map are referenced to the North American Vertical Datum of 1988. These flood elevations must be compared to structure and ground elevations referenced to the same **vertical datum**. For information regarding conversion between the National Geodetic Vertical Datum of 1929 and the North American Vertical Datum of 1988, visit the National Geodetic Survey website at <http://www.ngs.noaa.gov/> or contact the National Geodetic Survey at the following address:

NGS Information Services
NOAA, N/NGS12
National Geodetic Survey
SSMC-3, #9202
1315 East-West Highway
Silver Spring, MD 20910-3282

To obtain current elevation description, and/or location information for **bench marks** shown on this map, please contact the Information Services Branch of the National Geodetic Survey at (301) 713-3242, or visit its website at <http://www.ngs.noaa.gov/>.

Base map information shown on this FIRM was derived from U.S. Geological Survey Digital Orthophoto Quadrangles produced at a scale of 1:12,000 from photography dated 1994 or later and from National Geospatial Intelligence Agency imagery produced at a scale of 1:4,000 from photography dated 2003 or later.

This map reflects more detailed and up-to-date **stream channel configurations** than those shown on the previous FIRM for this jurisdiction. The floodplains and floodways that were transferred from the previous FIRM may have been adjusted to conform to these new stream channel configurations. As a result, the Flood Profiles and Floodway Data tables in the *Flood Insurance Study report (which contains authoritative hydraulic data)* may reflect stream channel distances that differ from what is shown on this map.

Corporate limits shown on this map are based on the best data available at the time of publication. Because changes due to annexations or de-annexations may have occurred after this map was published, map users should contact appropriate community officials to verify current corporate limit locations.

Please refer to the separately printed **Map Index** for an overview map of the county showing the layout of map panels; community map repository addresses; and a Listing of Communities table containing National Flood Insurance Program dates for each community as well as a listing of the panels on which each community is located.

Contact the **FEMA Map Service Center** at 1-800-358-9616 for information on available products associated with this FIRM. Available products may include previously issued Letters of Map Change, a *Flood insurance Study report*, and/or digital versions of this map. The FEMA Map Service Center may also be reached by Fax at 1-800-358-9620 and its website at <http://www.msc.fema.gov/>.

If you have **questions about this map** or questions concerning the National Flood Insurance Program in general, please call **1-877-FEMA MAP (1-877-336-2627)** or visit the FEMA website at <http://www.fema.gov/>.

LEGEND

SPECIAL FLOOD HAZARD AREAS (SFHAs) SUBJECT TO INUNDATION BY THE 1% ANNUAL CHANCE FLOOD

The 1% annual chance flood (100 year flood), also known as the base flood, is the flood that has a 1% chance of being equaled or exceeded in any given year. The Special Flood Hazard Area is the area subject to flooding by the 1% annual chance flood. Areas of Special Flood Hazard include Zones A, AE, AH, AO, AR, A99, V and VE. The Base Flood Elevation is the water surface elevation of the 1% annual chance flood.

ZONE A No Base Flood Elevations determined

ZONE AE Base Flood Elevations determined

ZONE AH Flood depths of 1 to 3 feet (usually areas of parking). Base Flood Elevations determined

ZONE AO Flood depths of 1 to 3 feet (usually sheet pile on sloping terrain); average depths determined. For areas of alluvial fan flooding, velocities also determined

ZONE AR Special Flood Hazard Area formerly protected from the 1% annual chance flood by a flood control system that was subsequently decommissioned. Zone AR indicates that the former flood control system is being restored to provide protection from the 1% annual chance or greater flood.

ZONE A99 Area to be protected from 1% annual chance flood by a Federal flood protection system under construction; no Base Flood Elevations determined

ZONE V Coastal flood zone with velocity hazard (wave action); no Base Flood Elevations determined

ZONE VE Coastal flood zone with velocity hazard (wave action); Base Flood Elevations determined

FLOODWAY AREAS IN ZONE AE

The floodway is the channel of a stream plus any adjacent floodplain areas that must be kept free of encroachment so that the 1% annual chance flood can be carried without substantial increases in flood heights.

OTHER FLOOD AREAS

ZONE X Areas of 0.2% annual chance flood; areas of 1% annual chance flood with average depths of less than 1 foot or with drainage areas less than 1 square mile; and areas protected by levees from the annual chance flood.

OTHER AREAS

ZONE X Areas determined to be outside the 0.2% annual chance floodplain

ZONE D Areas in which flood hazards are undetermined, but possible

COASTAL BARRIER RESOURCES SYSTEM (CBRS) AREAS

OTHERWISE PROTECTED AREAS (OPAs)

CBRS areas and OPAs are normally located within or adjacent to Special Flood Hazard Areas.

1% annual chance floodplain boundary
0.2% annual chance floodplain boundary
Highway boundary
Zone D boundary
CBRS and OPA boundary

Boundary dividing Special Flood Hazard Areas of different Base Flood Elevations, flood depths or flood velocities

Base Flood Elevation line and value, elevation in feet*

Base Flood Elevation value where uniform within panel; elevation in feet*

* Referenced to the North American Vertical Datum of 1988 (NAVD 88)

Cross section line

Transect line

97 57 30.37 22 30'

475 000' N

6000300 FT

DX5510

MI 5

River Mile

MAP REPOSITORIES
Refer to Map Repositories list on Map Index

EFFECTIVE DATE OF COUNTY-WIDE FLOOD INSURANCE RATE MAP
September 26, 2008

EFFECTIVE DATES OF REVISIONS TO THIS PANEL

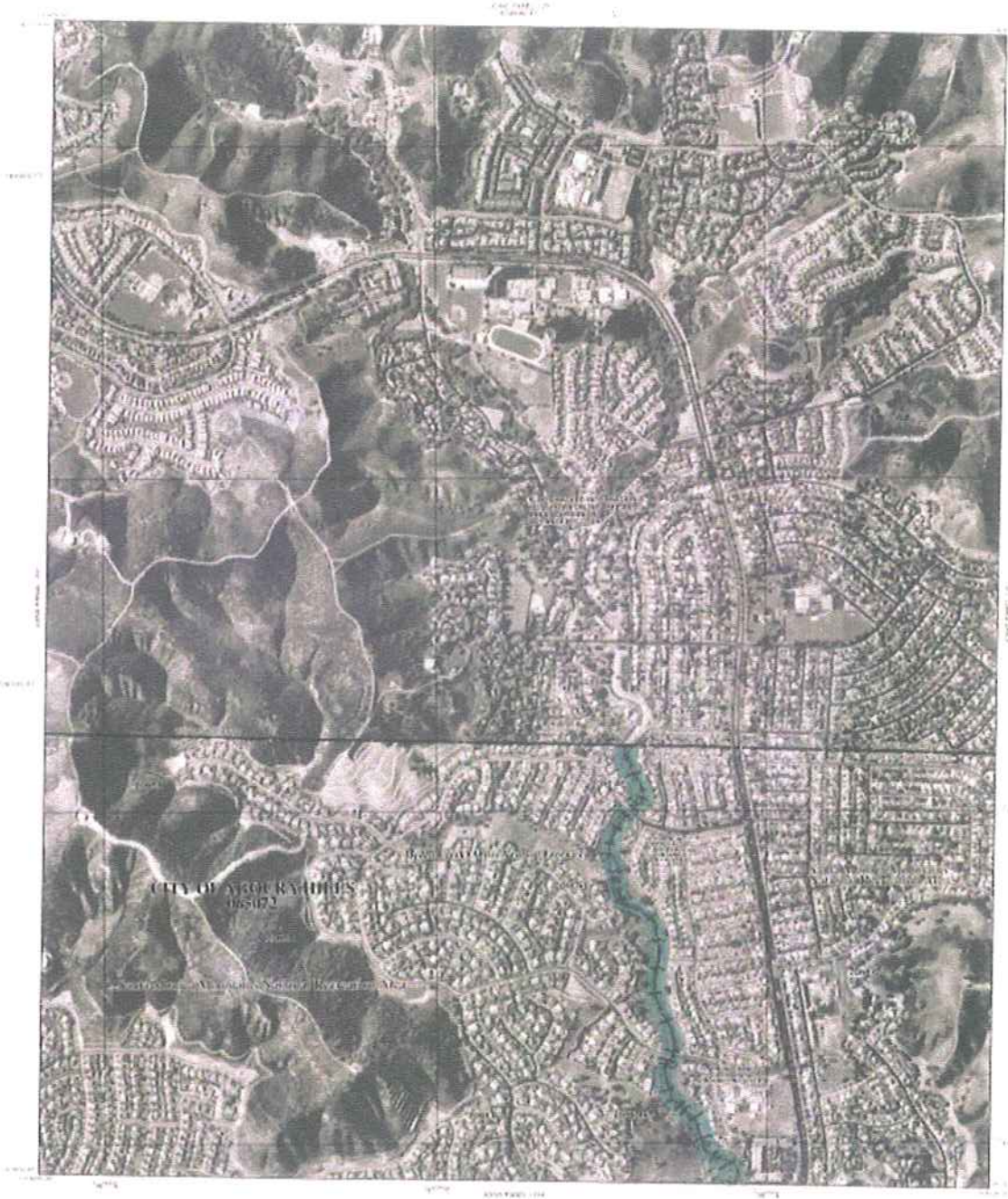
For community map revision history prior to countywide mapping, refer to the Community Map History table located in the Flood Insurance Study report for this jurisdiction.

To determine if flood insurance is available in this community, contact your insurance agent or call the National Flood Insurance Program at 1-800-438-6620.

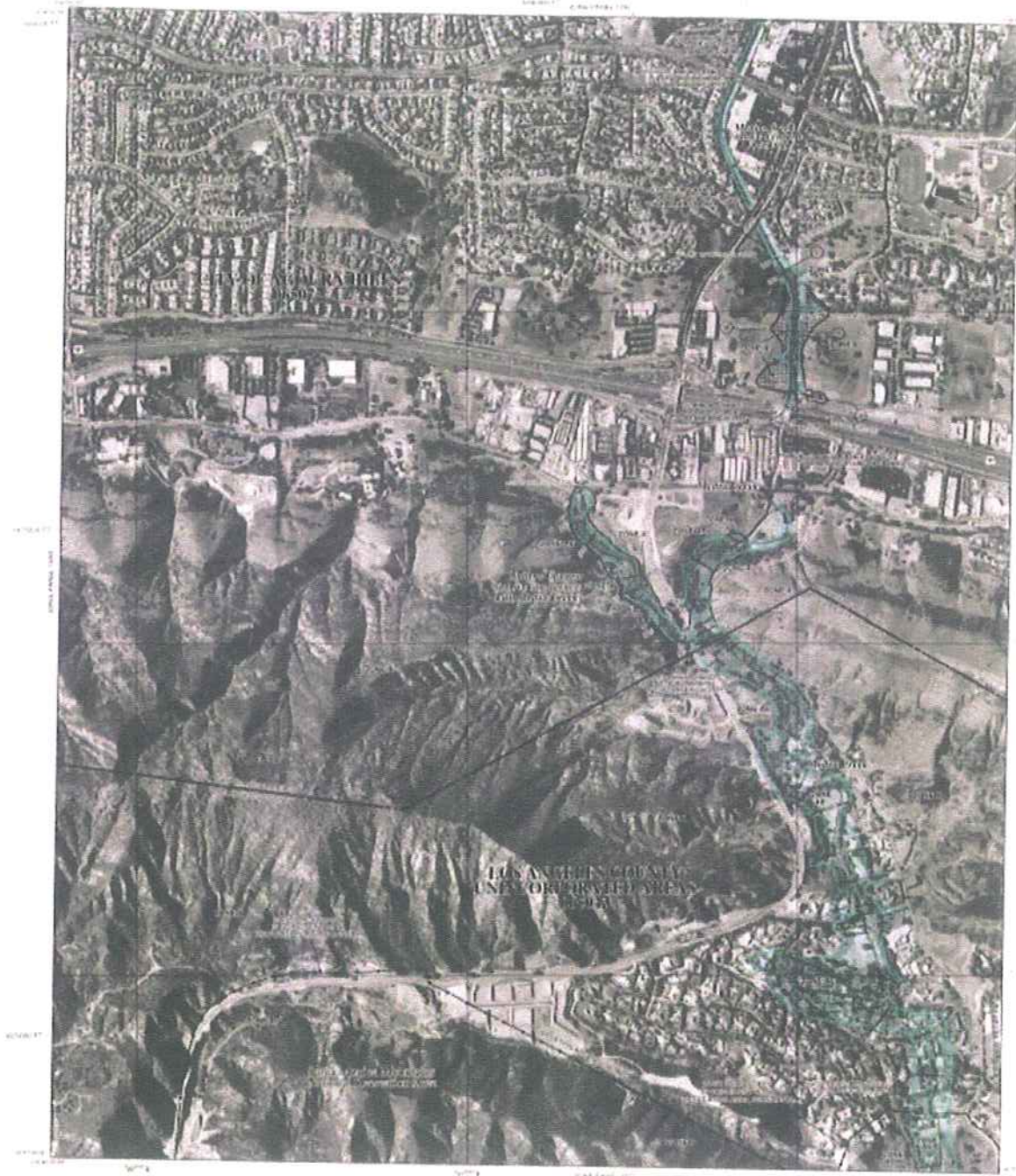




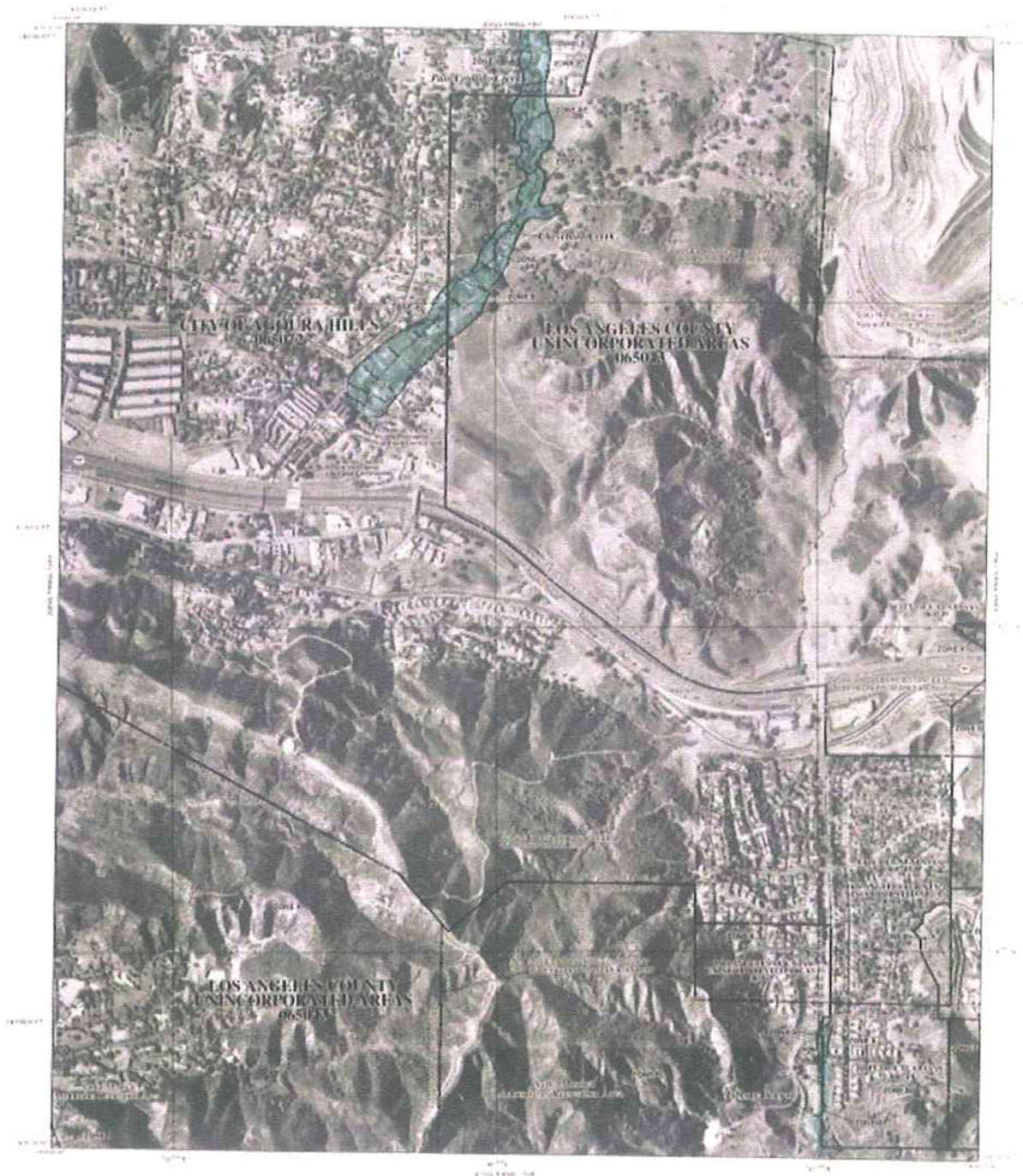
Map 52: Agoura Hills and Westlake Village FIRM Panel 1241



Map 53: Agoura Hills FIRM Panel 1242



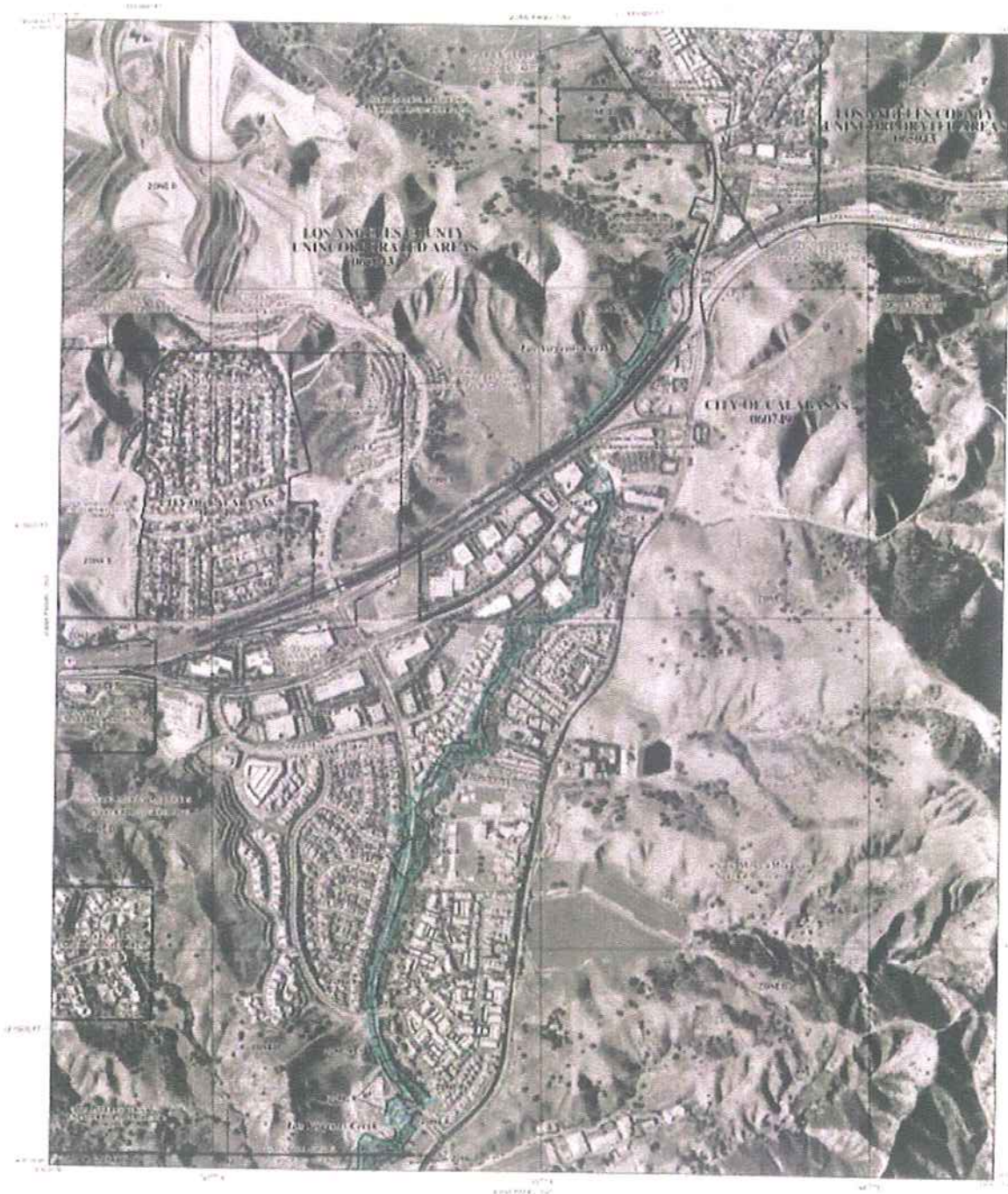
Map 54: Agoura Hills FIRM Panel 1244



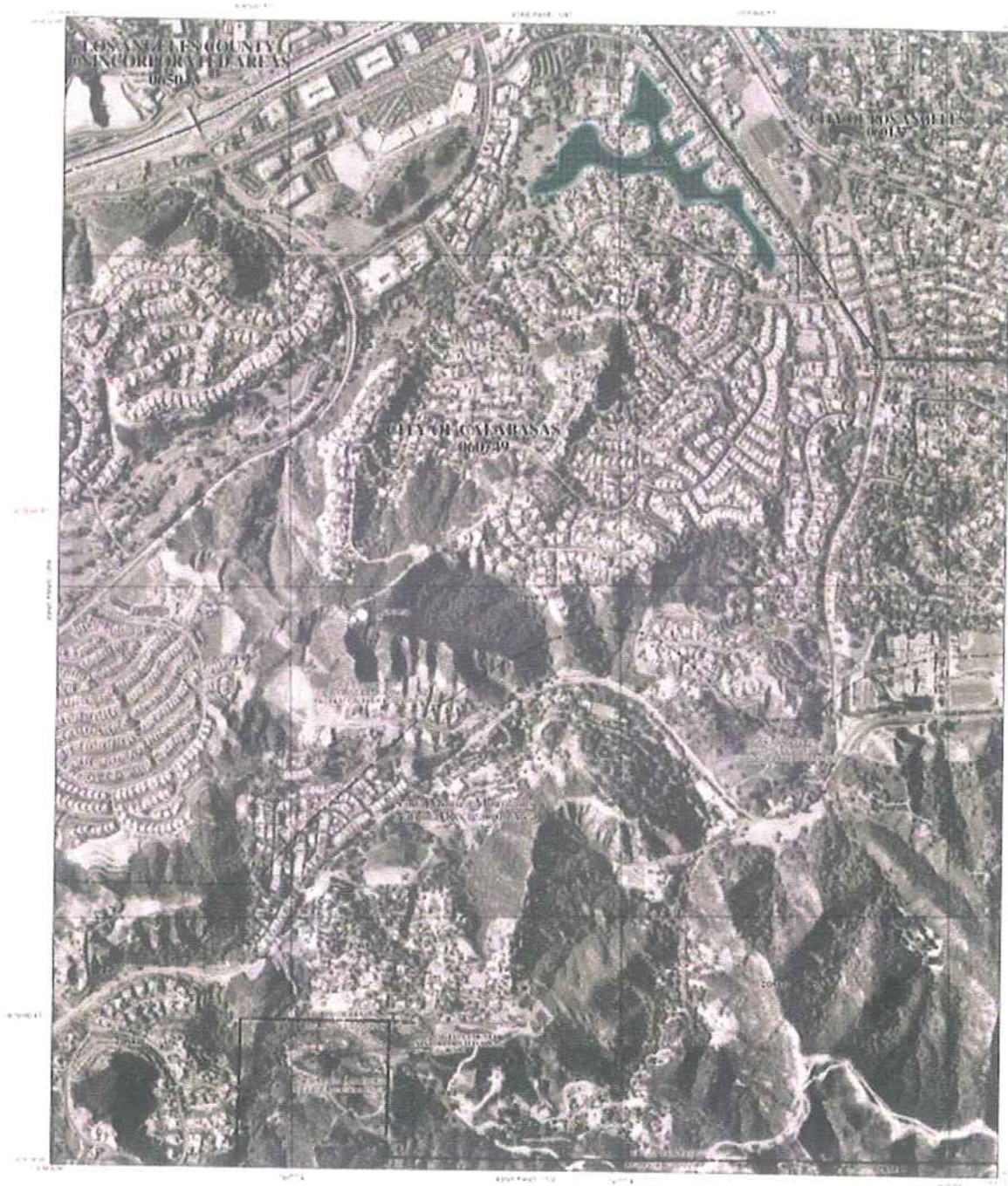
Map 55: Agoura Hills and Calabasas FIRM Panel 1263



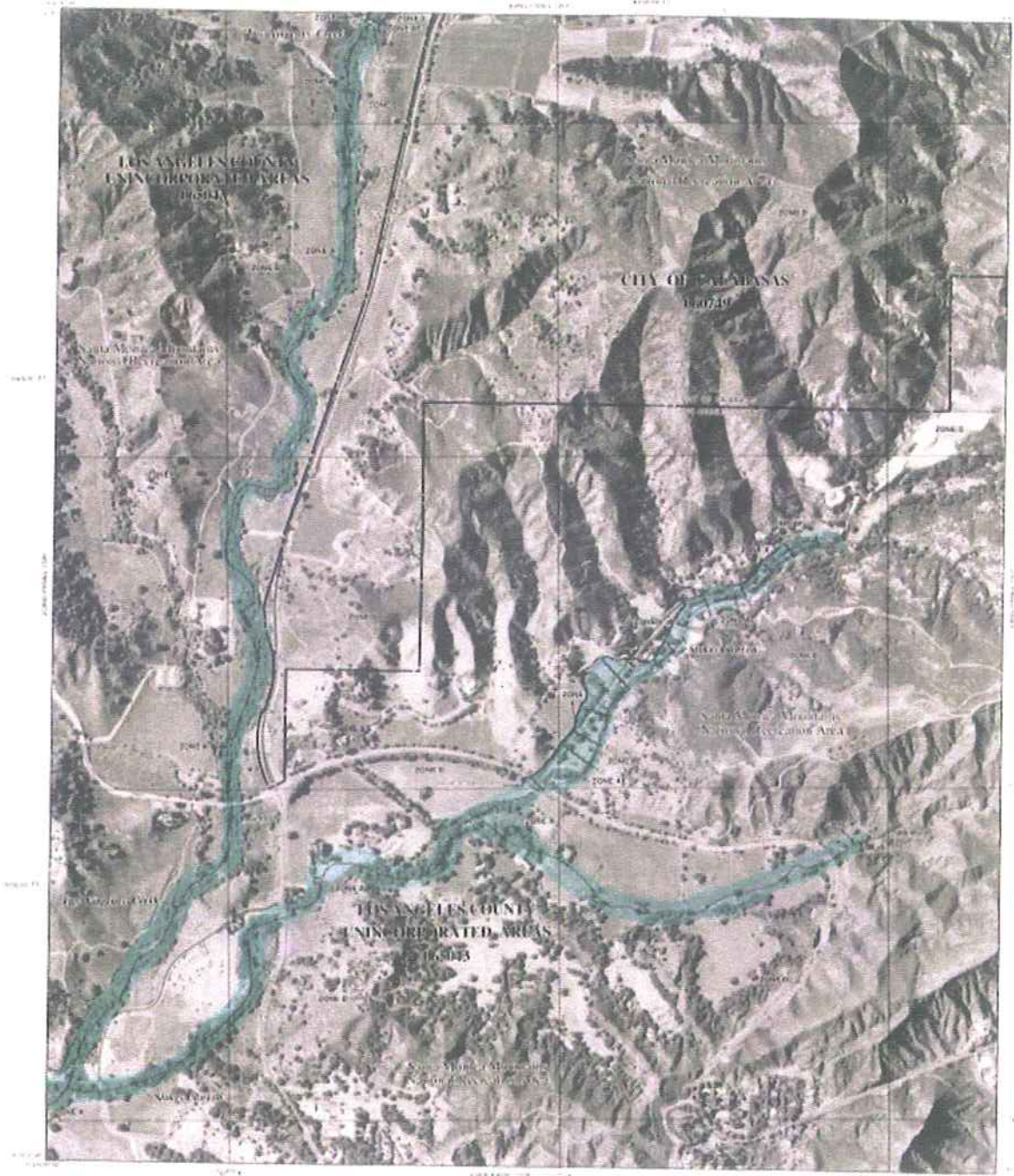
Map 56: Calabasas FIRM Panel 1262



Map 57: Calabasas FIRM Panel 1264



Map 58: Calabasas FIRM Panel 1269



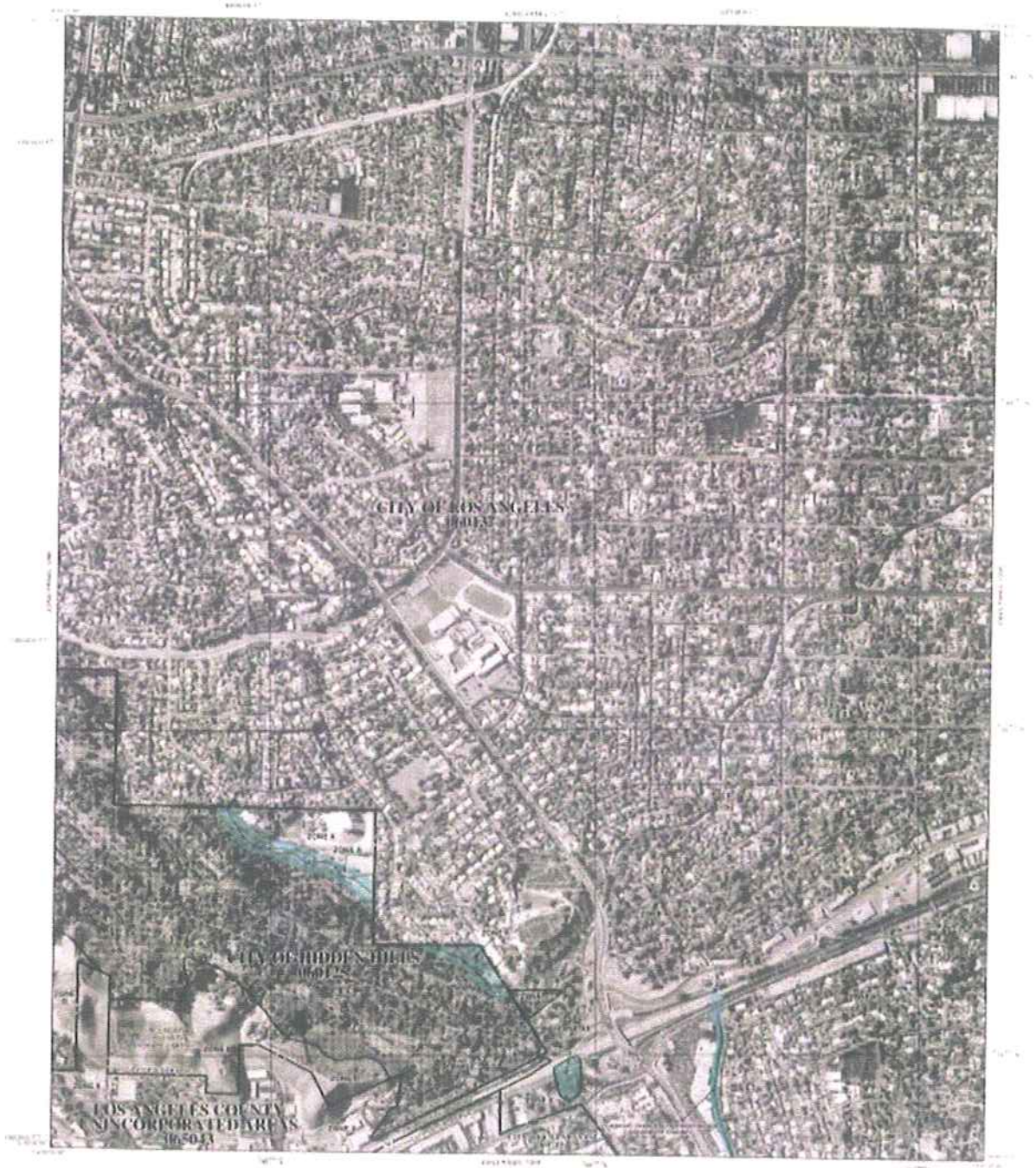
Map 59: Calabasas FIRM Panel 1527



Map 60: Calabasas FIRM Panel 1531



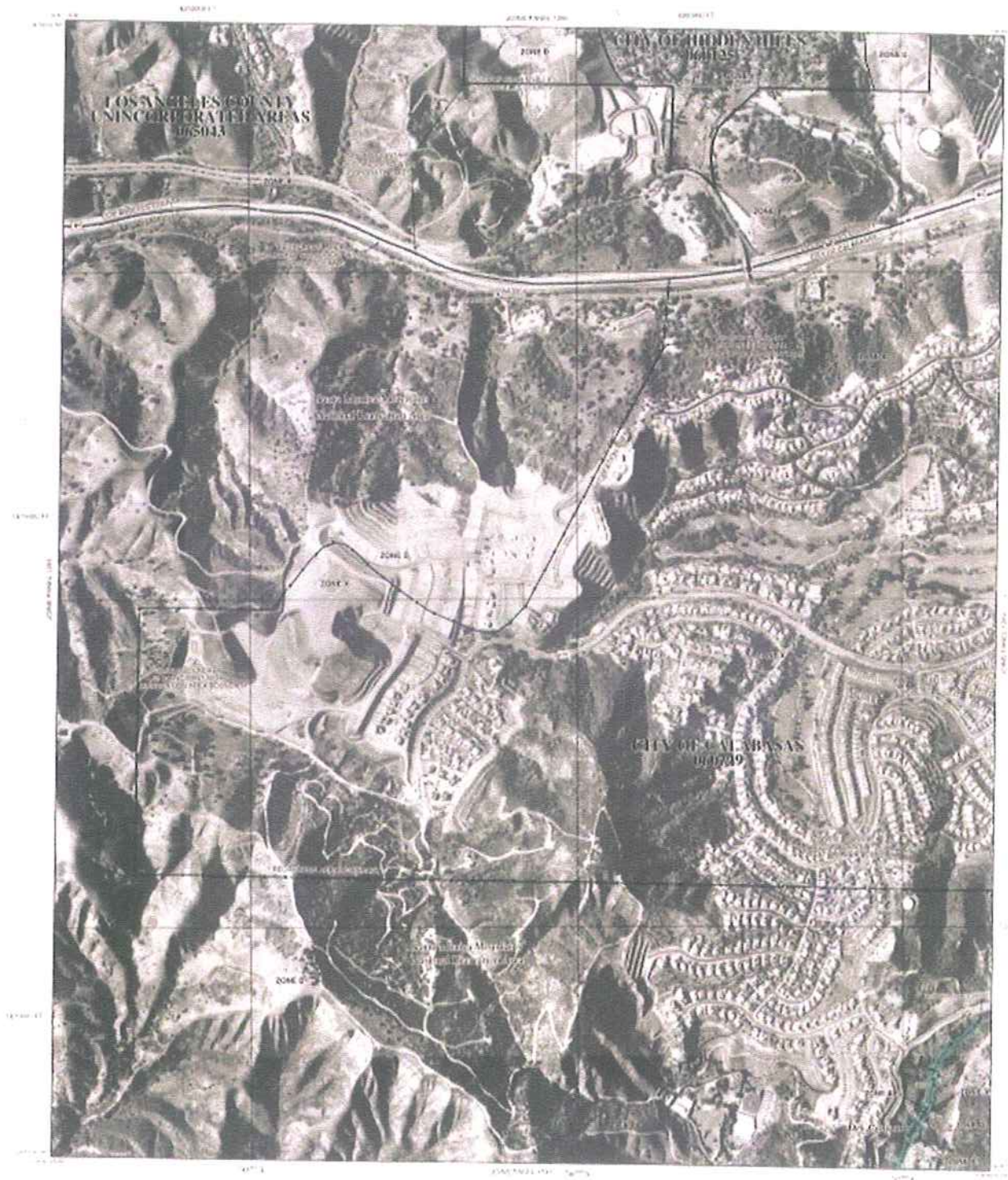
Map 61: Calabasas FIRM Panel 1532



Map 62: Calabasas FIRM Panel 1567



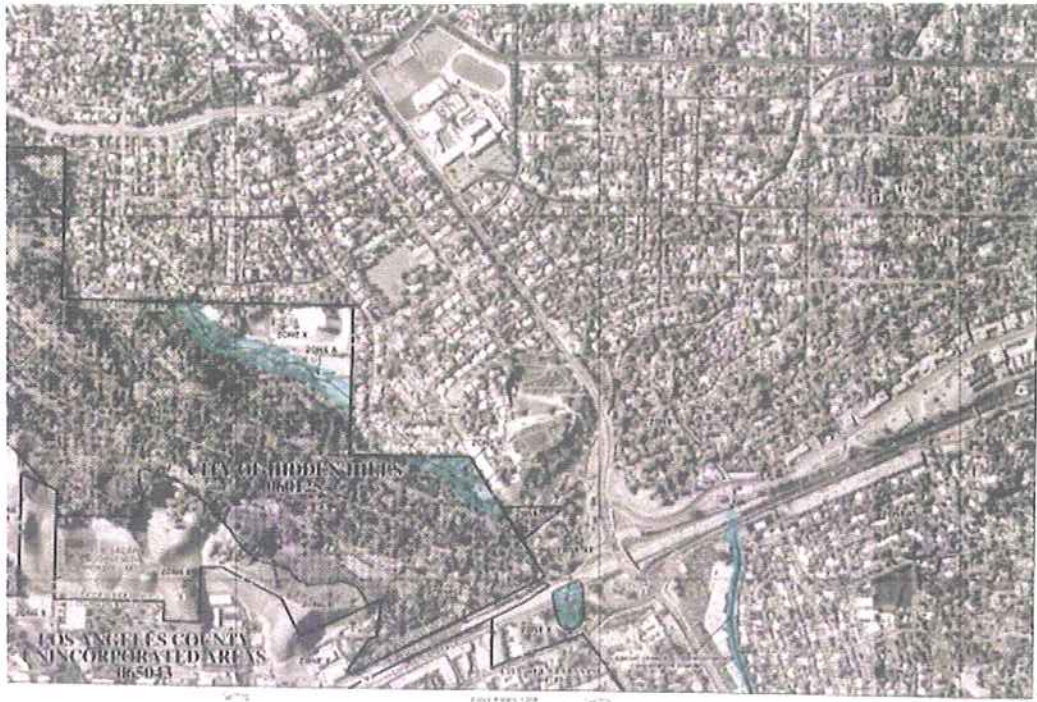
Map 63: Calabasas FIRM Panel 1267



Map 64: Calabasas FIRM Panel 1268



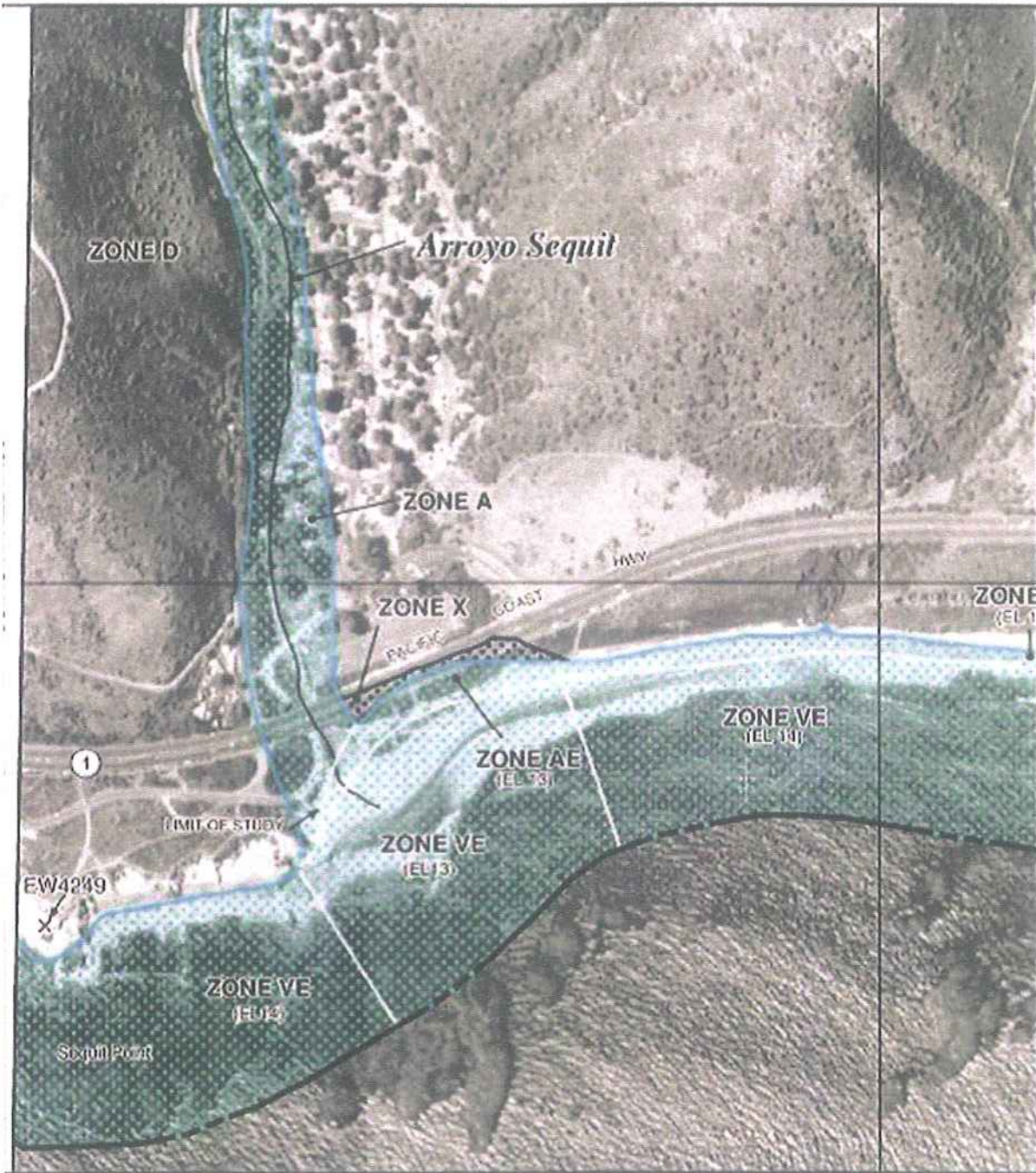
Map 65: Hidden Hills FIRM Panel 1266



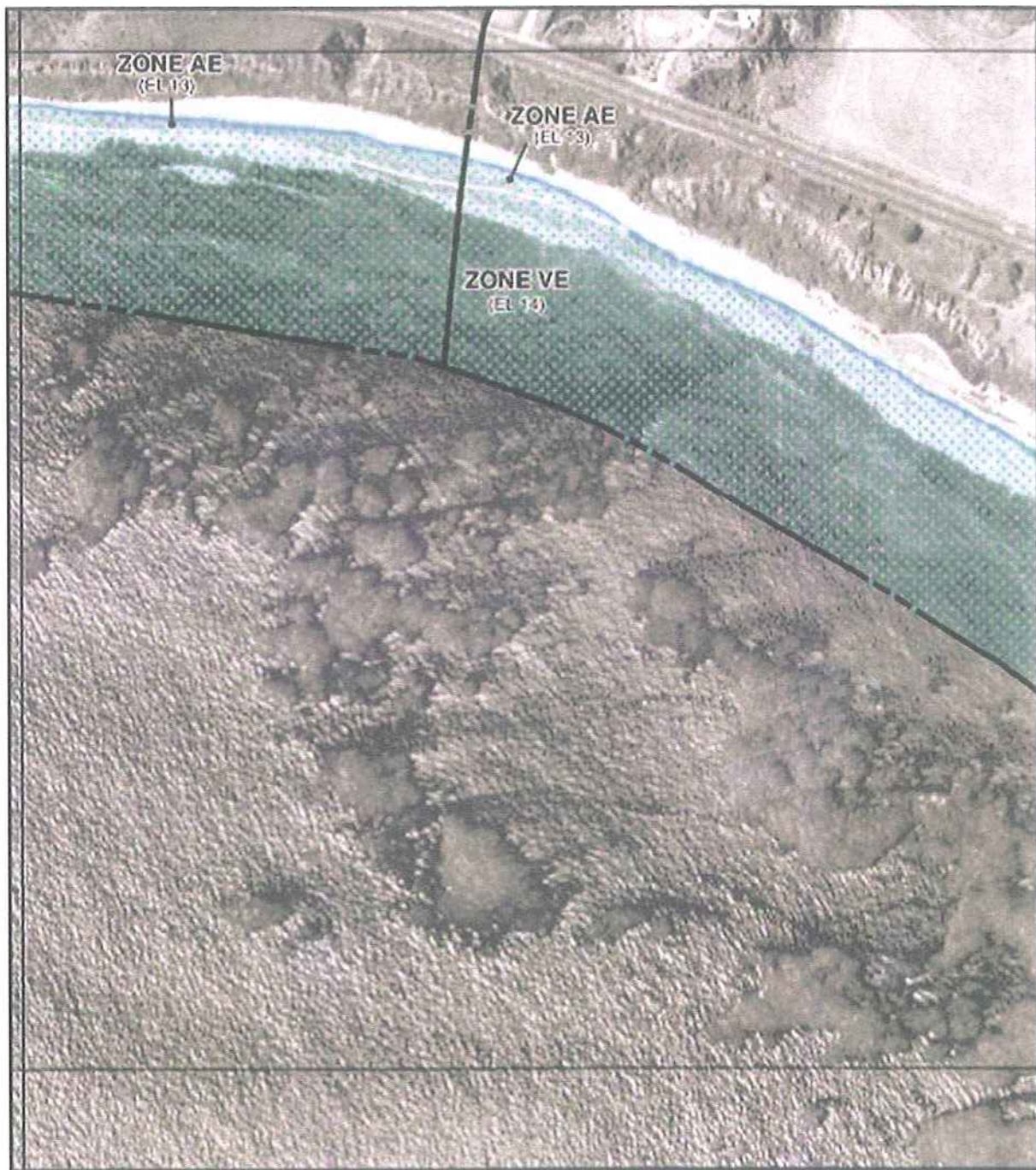
Map 66: Hidden Hills FIRM Panel 1267



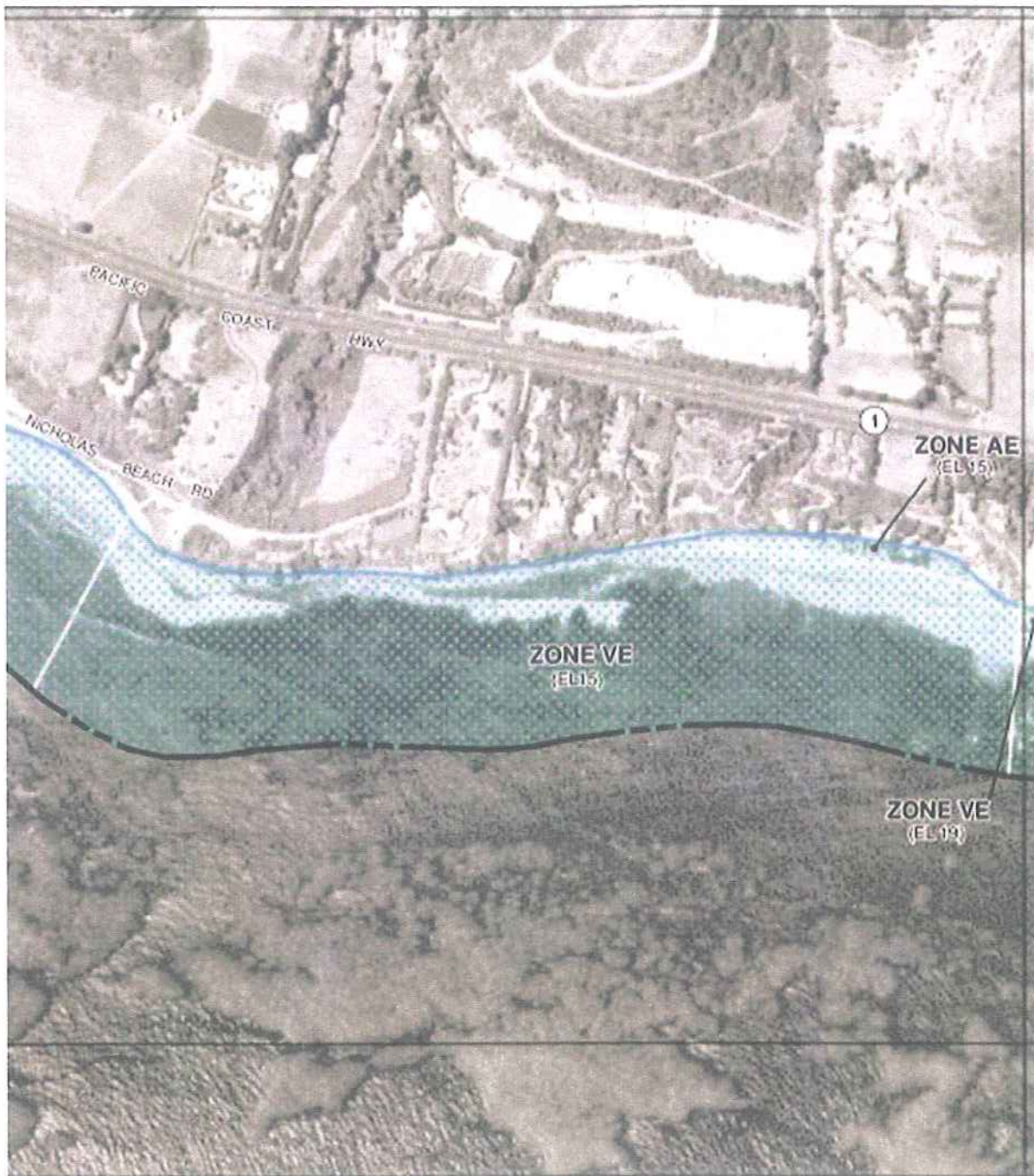
Map 67: Hidden Hills FIRM Panel 1268



Map 68: Malibu FIRM Panel 1491 (1)



Map 69: Malibu FIRM Panel 1491 (2)



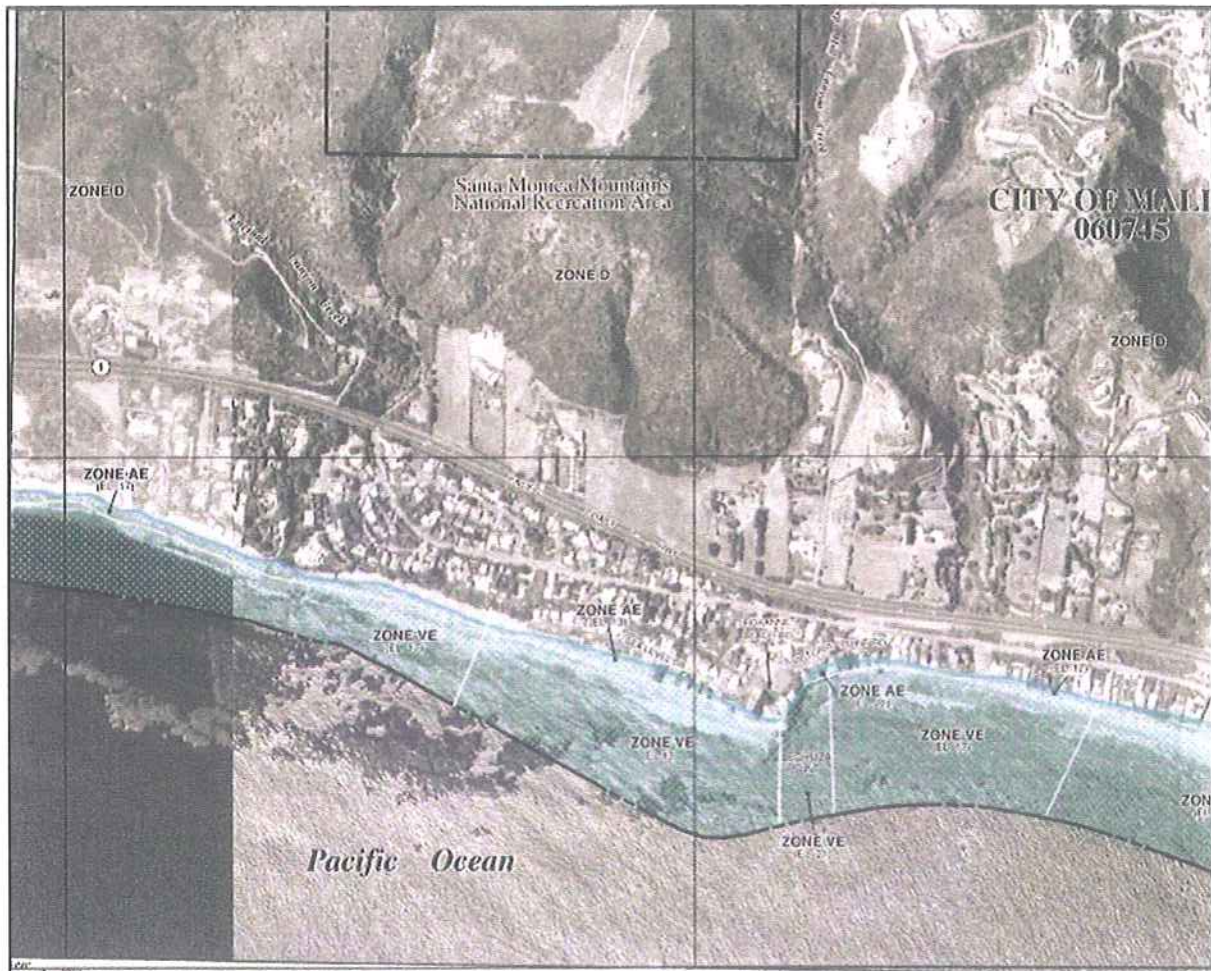
Map 70: Malibu FIRM Panel 1491 (3)



Map 71: Malibu FIRM Panel 1492 (1)



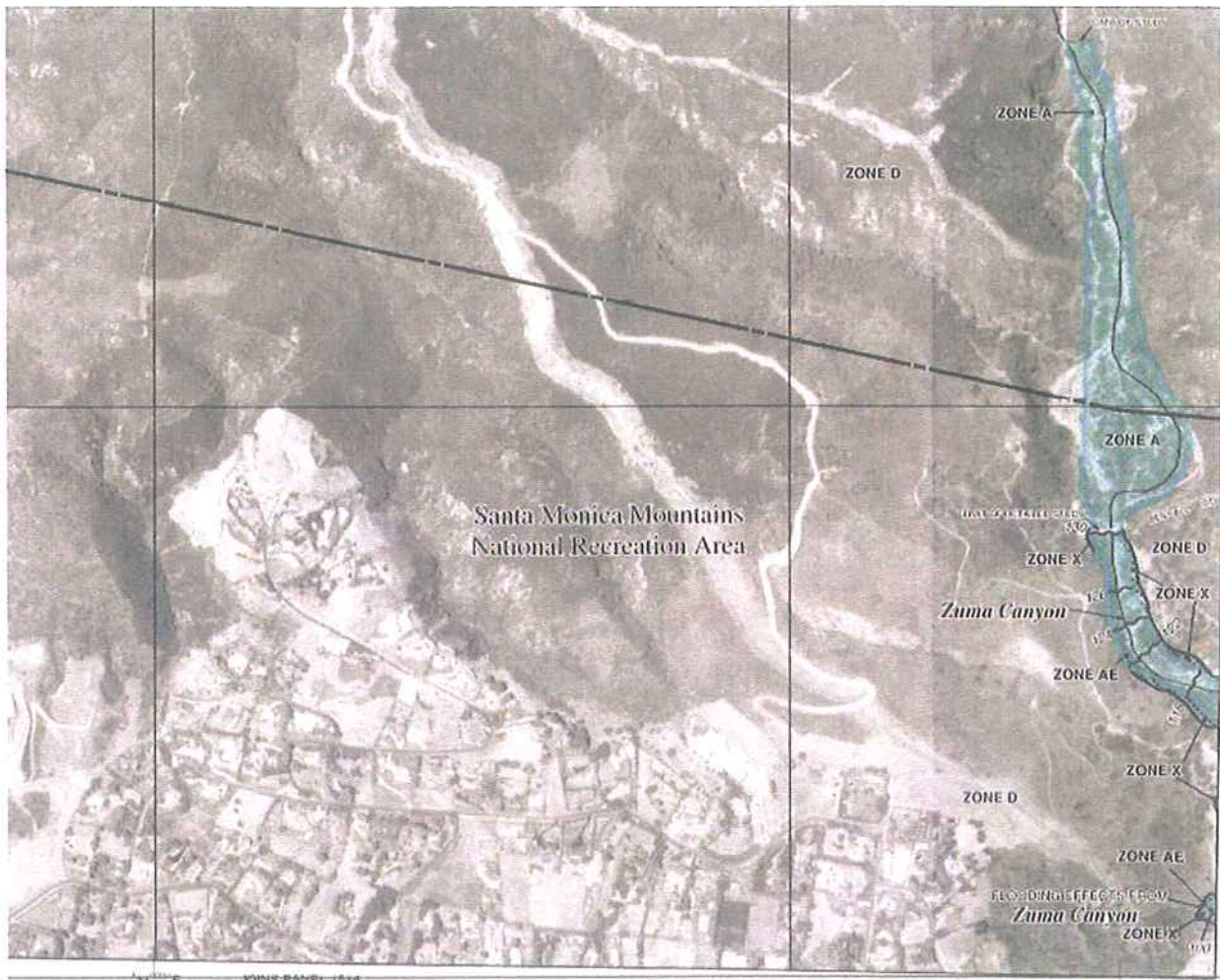
Map 72: Malibu FIRM Panel 1492 (2)



Map 73: Malibu FIRM Panel 1511 (1)



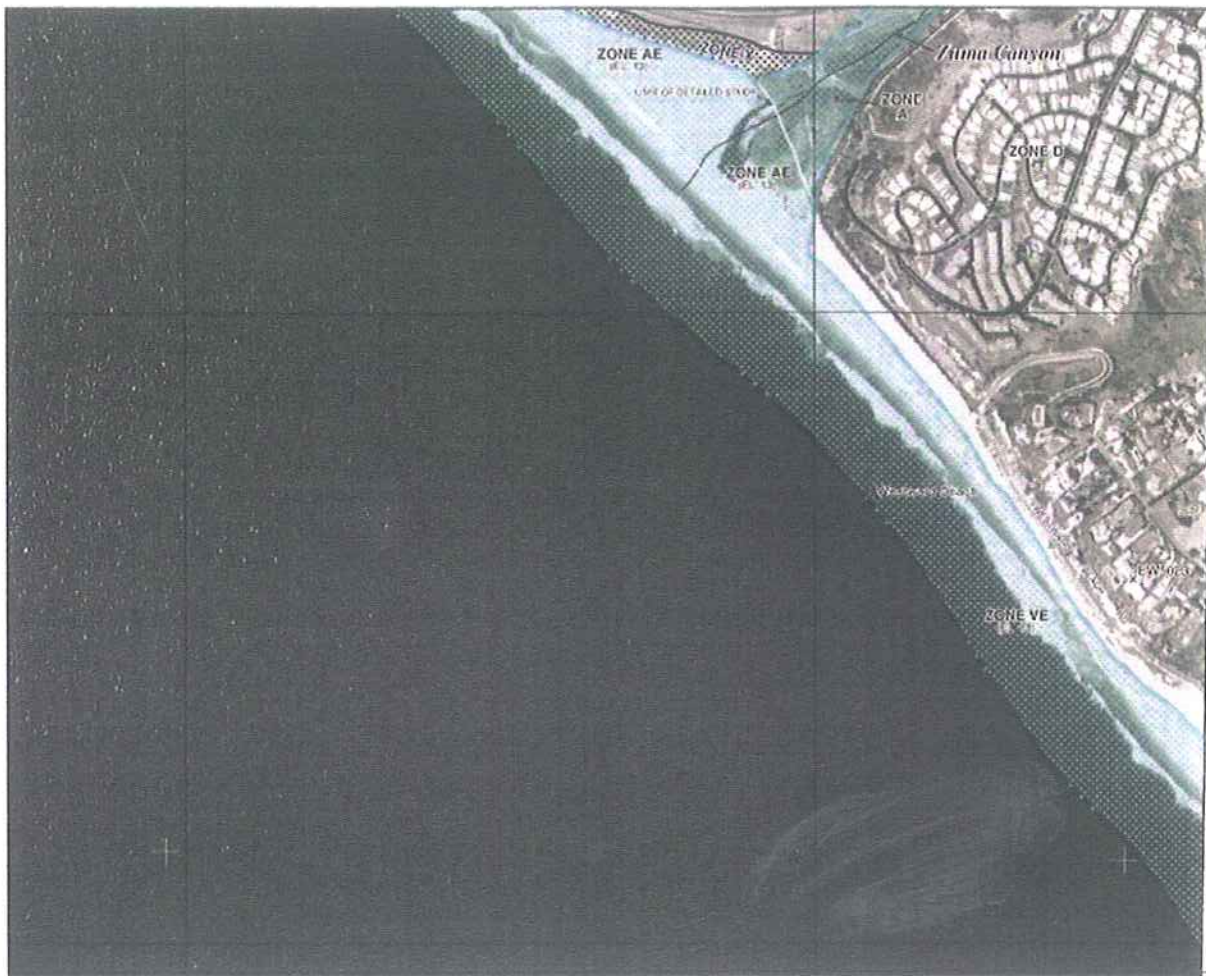
Map 74: Malibu FIRM Panel 1511 (2)



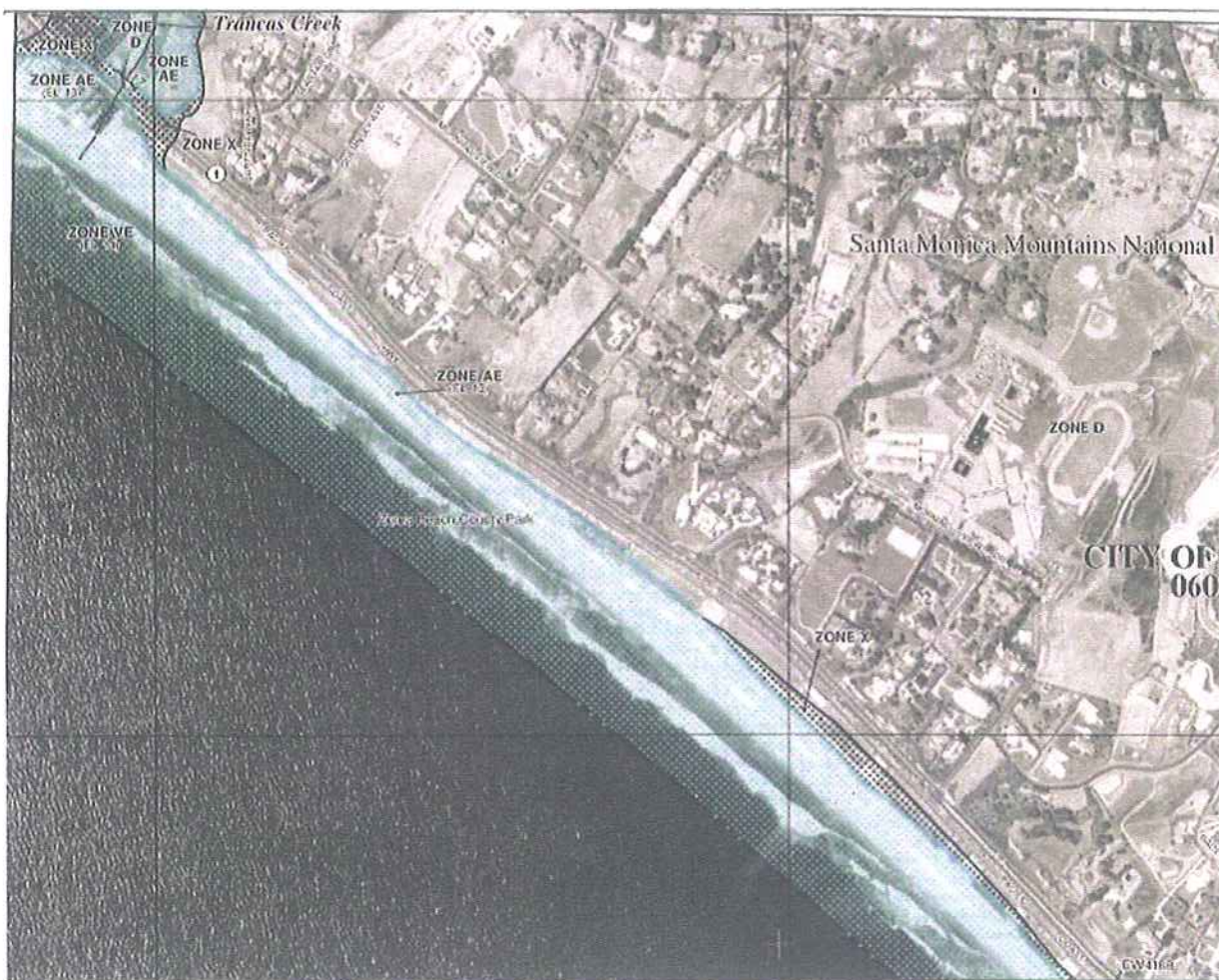
Map 75: Malibu FIRM Panel 1512



Map 76: Malibu FIRM Panel 1514 (1)



Map 77: Malibu FIRM Panel 1514 (2)



Map 78: Malibu FIRM Panel 1514 (3)