

No Trees



Young Trees



Desirable Height



Mature Trees



Visual Simulation



No Trees



Young Trees



Desirable Height



Mature Trees



Visual Simulation





No Trees



Young Trees



Desirable Height



Mature Trees



Visual Simulation



No Trees



Young Trees



Desirable Height



Mature Trees



Visual Simulation





No Trees



Young Trees



Desirable Height



Mature Trees



Visual Simulation





No Trees



Young Trees



Desirable Height



Mature Trees



Visual Simulation





No Trees



Young Trees



Desirable Height



Mature Trees



Visual Simulation



No Trees



Young Trees



Desirable Height



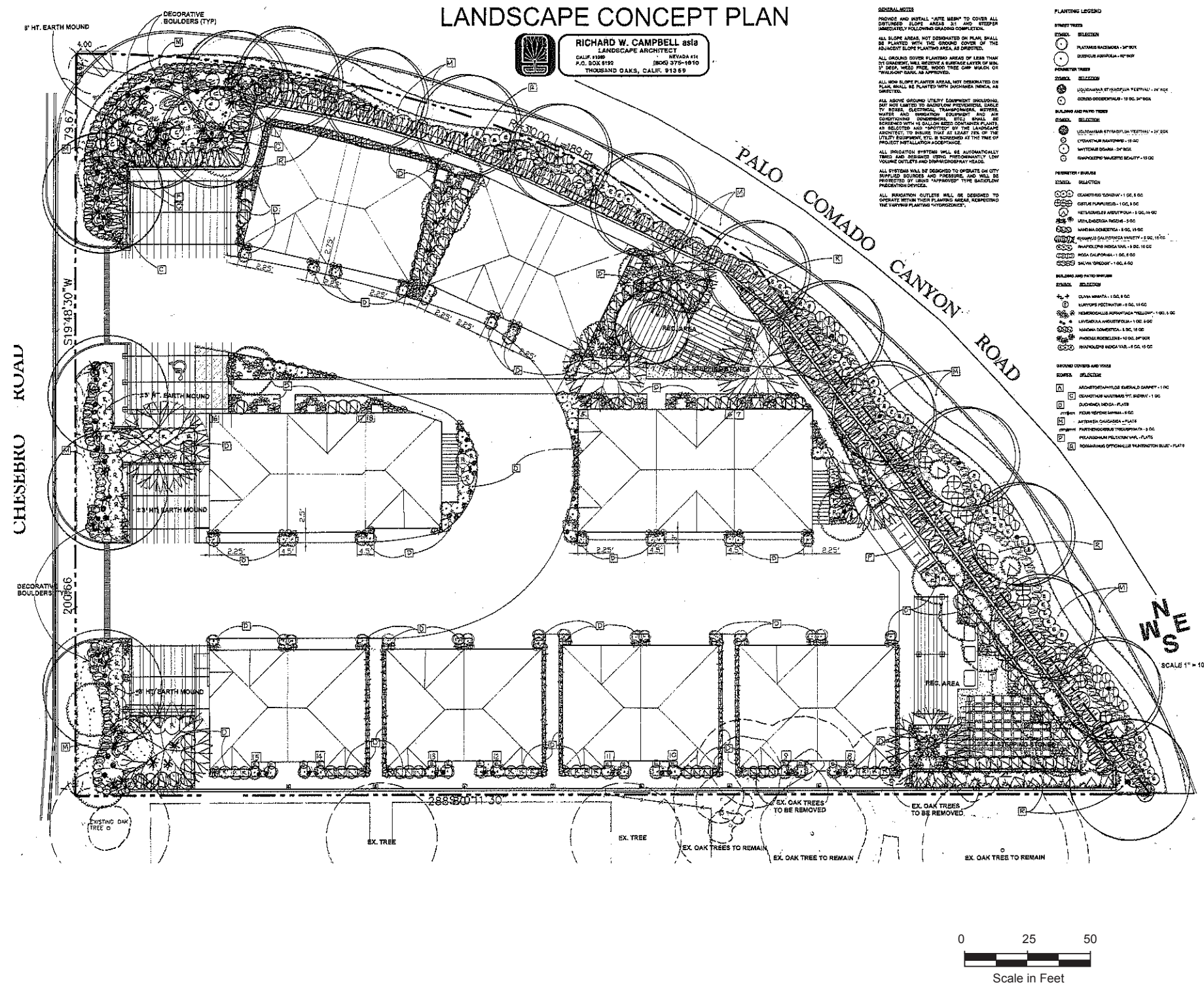
Mature Trees



Visual Simulation







**PLANTING LEGEND**

**PERIMETER TREES**

- PLATANUS RADICATA - 3" POT
- QUERCUS LAEVOLEAF - 10" POT
- QUERCUS ROBERTSONII - 10" POT
- QUERCUS LAEVOLEAF - 14" POT
- QUERCUS ROBERTSONII - 14" POT
- QUERCUS LAEVOLEAF - 18" POT
- QUERCUS ROBERTSONII - 18" POT

**BUILDING AND PATIO TREES**

- QUERCUS LAEVOLEAF - 14" POT
- QUERCUS ROBERTSONII - 14" POT
- QUERCUS LAEVOLEAF - 18" POT
- QUERCUS ROBERTSONII - 18" POT

**PERIMETER BUSHES**

- CRYPTANTHUS TORQUATUS - 10" S. 10"
- CRYPTANTHUS TORQUATUS - 14" S. 14"
- CRYPTANTHUS TORQUATUS - 18" S. 18"
- CRYPTANTHUS TORQUATUS - 24" S. 24"
- CRYPTANTHUS TORQUATUS - 30" S. 30"
- CRYPTANTHUS TORQUATUS - 36" S. 36"
- CRYPTANTHUS TORQUATUS - 42" S. 42"
- CRYPTANTHUS TORQUATUS - 48" S. 48"
- CRYPTANTHUS TORQUATUS - 54" S. 54"
- CRYPTANTHUS TORQUATUS - 60" S. 60"
- CRYPTANTHUS TORQUATUS - 66" S. 66"
- CRYPTANTHUS TORQUATUS - 72" S. 72"
- CRYPTANTHUS TORQUATUS - 78" S. 78"
- CRYPTANTHUS TORQUATUS - 84" S. 84"
- CRYPTANTHUS TORQUATUS - 90" S. 90"
- CRYPTANTHUS TORQUATUS - 96" S. 96"
- CRYPTANTHUS TORQUATUS - 102" S. 102"
- CRYPTANTHUS TORQUATUS - 108" S. 108"
- CRYPTANTHUS TORQUATUS - 114" S. 114"
- CRYPTANTHUS TORQUATUS - 120" S. 120"
- CRYPTANTHUS TORQUATUS - 126" S. 126"
- CRYPTANTHUS TORQUATUS - 132" S. 132"
- CRYPTANTHUS TORQUATUS - 138" S. 138"
- CRYPTANTHUS TORQUATUS - 144" S. 144"
- CRYPTANTHUS TORQUATUS - 150" S. 150"
- CRYPTANTHUS TORQUATUS - 156" S. 156"
- CRYPTANTHUS TORQUATUS - 162" S. 162"
- CRYPTANTHUS TORQUATUS - 168" S. 168"
- CRYPTANTHUS TORQUATUS - 174" S. 174"
- CRYPTANTHUS TORQUATUS - 180" S. 180"
- CRYPTANTHUS TORQUATUS - 186" S. 186"
- CRYPTANTHUS TORQUATUS - 192" S. 192"
- CRYPTANTHUS TORQUATUS - 198" S. 198"
- CRYPTANTHUS TORQUATUS - 204" S. 204"
- CRYPTANTHUS TORQUATUS - 210" S. 210"
- CRYPTANTHUS TORQUATUS - 216" S. 216"
- CRYPTANTHUS TORQUATUS - 222" S. 222"
- CRYPTANTHUS TORQUATUS - 228" S. 228"
- CRYPTANTHUS TORQUATUS - 234" S. 234"
- CRYPTANTHUS TORQUATUS - 240" S. 240"
- CRYPTANTHUS TORQUATUS - 246" S. 246"
- CRYPTANTHUS TORQUATUS - 252" S. 252"
- CRYPTANTHUS TORQUATUS - 258" S. 258"
- CRYPTANTHUS TORQUATUS - 264" S. 264"
- CRYPTANTHUS TORQUATUS - 270" S. 270"
- CRYPTANTHUS TORQUATUS - 276" S. 276"
- CRYPTANTHUS TORQUATUS - 282" S. 282"
- CRYPTANTHUS TORQUATUS - 288" S. 288"
- CRYPTANTHUS TORQUATUS - 294" S. 294"
- CRYPTANTHUS TORQUATUS - 300" S. 300"

**BUILDING AND PATIO TREES**

- QUERCUS LAEVOLEAF - 10" S. 10"
- QUERCUS LAEVOLEAF - 14" S. 14"
- QUERCUS LAEVOLEAF - 18" S. 18"
- QUERCUS LAEVOLEAF - 24" S. 24"
- QUERCUS LAEVOLEAF - 30" S. 30"
- QUERCUS LAEVOLEAF - 36" S. 36"
- QUERCUS LAEVOLEAF - 42" S. 42"
- QUERCUS LAEVOLEAF - 48" S. 48"
- QUERCUS LAEVOLEAF - 54" S. 54"
- QUERCUS LAEVOLEAF - 60" S. 60"
- QUERCUS LAEVOLEAF - 66" S. 66"
- QUERCUS LAEVOLEAF - 72" S. 72"
- QUERCUS LAEVOLEAF - 78" S. 78"
- QUERCUS LAEVOLEAF - 84" S. 84"
- QUERCUS LAEVOLEAF - 90" S. 90"
- QUERCUS LAEVOLEAF - 96" S. 96"
- QUERCUS LAEVOLEAF - 102" S. 102"
- QUERCUS LAEVOLEAF - 108" S. 108"
- QUERCUS LAEVOLEAF - 114" S. 114"
- QUERCUS LAEVOLEAF - 120" S. 120"
- QUERCUS LAEVOLEAF - 126" S. 126"
- QUERCUS LAEVOLEAF - 132" S. 132"
- QUERCUS LAEVOLEAF - 138" S. 138"
- QUERCUS LAEVOLEAF - 144" S. 144"
- QUERCUS LAEVOLEAF - 150" S. 150"
- QUERCUS LAEVOLEAF - 156" S. 156"
- QUERCUS LAEVOLEAF - 162" S. 162"
- QUERCUS LAEVOLEAF - 168" S. 168"
- QUERCUS LAEVOLEAF - 174" S. 174"
- QUERCUS LAEVOLEAF - 180" S. 180"
- QUERCUS LAEVOLEAF - 186" S. 186"
- QUERCUS LAEVOLEAF - 192" S. 192"
- QUERCUS LAEVOLEAF - 198" S. 198"
- QUERCUS LAEVOLEAF - 204" S. 204"
- QUERCUS LAEVOLEAF - 210" S. 210"
- QUERCUS LAEVOLEAF - 216" S. 216"
- QUERCUS LAEVOLEAF - 222" S. 222"
- QUERCUS LAEVOLEAF - 228" S. 228"
- QUERCUS LAEVOLEAF - 234" S. 234"
- QUERCUS LAEVOLEAF - 240" S. 240"
- QUERCUS LAEVOLEAF - 246" S. 246"
- QUERCUS LAEVOLEAF - 252" S. 252"
- QUERCUS LAEVOLEAF - 258" S. 258"
- QUERCUS LAEVOLEAF - 264" S. 264"
- QUERCUS LAEVOLEAF - 270" S. 270"
- QUERCUS LAEVOLEAF - 276" S. 276"
- QUERCUS LAEVOLEAF - 282" S. 282"
- QUERCUS LAEVOLEAF - 288" S. 288"
- QUERCUS LAEVOLEAF - 294" S. 294"
- QUERCUS LAEVOLEAF - 300" S. 300"

**BUILDING AND PATIO TREES**

- QUERCUS LAEVOLEAF - 10" S. 10"
- QUERCUS LAEVOLEAF - 14" S. 14"
- QUERCUS LAEVOLEAF - 18" S. 18"
- QUERCUS LAEVOLEAF - 24" S. 24"
- QUERCUS LAEVOLEAF - 30" S. 30"
- QUERCUS LAEVOLEAF - 36" S. 36"
- QUERCUS LAEVOLEAF - 42" S. 42"
- QUERCUS LAEVOLEAF - 48" S. 48"
- QUERCUS LAEVOLEAF - 54" S. 54"
- QUERCUS LAEVOLEAF - 60" S. 60"
- QUERCUS LAEVOLEAF - 66" S. 66"
- QUERCUS LAEVOLEAF - 72" S. 72"
- QUERCUS LAEVOLEAF - 78" S. 78"
- QUERCUS LAEVOLEAF - 84" S. 84"
- QUERCUS LAEVOLEAF - 90" S. 90"
- QUERCUS LAEVOLEAF - 96" S. 96"
- QUERCUS LAEVOLEAF - 102" S. 102"
- QUERCUS LAEVOLEAF - 108" S. 108"
- QUERCUS LAEVOLEAF - 114" S. 114"
- QUERCUS LAEVOLEAF - 120" S. 120"
- QUERCUS LAEVOLEAF - 126" S. 126"
- QUERCUS LAEVOLEAF - 132" S. 132"
- QUERCUS LAEVOLEAF - 138" S. 138"
- QUERCUS LAEVOLEAF - 144" S. 144"
- QUERCUS LAEVOLEAF - 150" S. 150"
- QUERCUS LAEVOLEAF - 156" S. 156"
- QUERCUS LAEVOLEAF - 162" S. 162"
- QUERCUS LAEVOLEAF - 168" S. 168"
- QUERCUS LAEVOLEAF - 174" S. 174"
- QUERCUS LAEVOLEAF - 180" S. 180"
- QUERCUS LAEVOLEAF - 186" S. 186"
- QUERCUS LAEVOLEAF - 192" S. 192"
- QUERCUS LAEVOLEAF - 198" S. 198"
- QUERCUS LAEVOLEAF - 204" S. 204"
- QUERCUS LAEVOLEAF - 210" S. 210"
- QUERCUS LAEVOLEAF - 216" S. 216"
- QUERCUS LAEVOLEAF - 222" S. 222"
- QUERCUS LAEVOLEAF - 228" S. 228"
- QUERCUS LAEVOLEAF - 234" S. 234"
- QUERCUS LAEVOLEAF - 240" S. 240"
- QUERCUS LAEVOLEAF - 246" S. 246"
- QUERCUS LAEVOLEAF - 252" S. 252"
- QUERCUS LAEVOLEAF - 258" S. 258"
- QUERCUS LAEVOLEAF - 264" S. 264"
- QUERCUS LAEVOLEAF - 270" S. 270"
- QUERCUS LAEVOLEAF - 276" S. 276"
- QUERCUS LAEVOLEAF - 282" S. 282"
- QUERCUS LAEVOLEAF - 288" S. 288"
- QUERCUS LAEVOLEAF - 294" S. 294"
- QUERCUS LAEVOLEAF - 300" S. 300"

**BUILDING AND PATIO TREES**

- QUERCUS LAEVOLEAF - 10" S. 10"
- QUERCUS LAEVOLEAF - 14" S. 14"
- QUERCUS LAEVOLEAF - 18" S. 18"
- QUERCUS LAEVOLEAF - 24" S. 24"
- QUERCUS LAEVOLEAF - 30" S. 30"
- QUERCUS LAEVOLEAF - 36" S. 36"
- QUERCUS LAEVOLEAF - 42" S. 42"
- QUERCUS LAEVOLEAF - 48" S. 48"
- QUERCUS LAEVOLEAF - 54" S. 54"
- QUERCUS LAEVOLEAF - 60" S. 60"
- QUERCUS LAEVOLEAF - 66" S. 66"
- QUERCUS LAEVOLEAF - 72" S. 72"
- QUERCUS LAEVOLEAF - 78" S. 78"
- QUERCUS LAEVOLEAF - 84" S. 84"
- QUERCUS LAEVOLEAF - 90" S. 90"
- QUERCUS LAEVOLEAF - 96" S. 96"
- QUERCUS LAEVOLEAF - 102" S. 102"
- QUERCUS LAEVOLEAF - 108" S. 108"
- QUERCUS LAEVOLEAF - 114" S. 114"
- QUERCUS LAEVOLEAF - 120" S. 120"
- QUERCUS LAEVOLEAF - 126" S. 126"
- QUERCUS LAEVOLEAF - 132" S. 132"
- QUERCUS LAEVOLEAF - 138" S. 138"
- QUERCUS LAEVOLEAF - 144" S. 144"
- QUERCUS LAEVOLEAF - 150" S. 150"
- QUERCUS LAEVOLEAF - 156" S. 156"
- QUERCUS LAEVOLEAF - 162" S. 162"
- QUERCUS LAEVOLEAF - 168" S. 168"
- QUERCUS LAEVOLEAF - 174" S. 174"
- QUERCUS LAEVOLEAF - 180" S. 180"
- QUERCUS LAEVOLEAF - 186" S. 186"
- QUERCUS LAEVOLEAF - 192" S. 192"
- QUERCUS LAEVOLEAF - 198" S. 198"
- QUERCUS LAEVOLEAF - 204" S. 204"
- QUERCUS LAEVOLEAF - 210" S. 210"
- QUERCUS LAEVOLEAF - 216" S. 216"
- QUERCUS LAEVOLEAF - 222" S. 222"
- QUERCUS LAEVOLEAF - 228" S. 228"
- QUERCUS LAEVOLEAF - 234" S. 234"
- QUERCUS LAEVOLEAF - 240" S. 240"
- QUERCUS LAEVOLEAF - 246" S. 246"
- QUERCUS LAEVOLEAF - 252" S. 252"
- QUERCUS LAEVOLEAF - 258" S. 258"
- QUERCUS LAEVOLEAF - 264" S. 264"
- QUERCUS LAEVOLEAF - 270" S. 270"
- QUERCUS LAEVOLEAF - 276" S. 276"
- QUERCUS LAEVOLEAF - 282" S. 282"
- QUERCUS LAEVOLEAF - 288" S. 288"
- QUERCUS LAEVOLEAF - 294" S. 294"
- QUERCUS LAEVOLEAF - 300" S. 300"

SCALE 1" = 10'



Scale in Feet

Conceptual Landscaping Plan

Figure 9

## **Appendix A**

---

### *Air Quality Modeling Results and Calculations*





**Hilel Townhomes**  
**Los Angeles-South Coast County, Annual**

**1.0 Project Characteristics**

---

**1.1 Land Usage**

Land Uses	Size	Metric
Condo/Townhouse	18	Dwelling Unit

**1.2 Other Project Characteristics**

<b>Urbanization</b>	Urban	<b>Wind Speed (m/s)</b>	2.2	<b>Utility Company</b>	Southern California Edison
<b>Climate Zone</b>	8	<b>Precipitation Freq (Days)</b>	33		

**1.3 User Entered Comments**

Project Characteristics -  
 Land Use - 0.94 acre ; 41,039 square feet  
 Construction Phase - Painting to occur simultaneous with building construction on completed already completed structures.  
 Construction Off-road Equipment Mitigation -

**2.0 Emissions Summary**

---

## 2.1 Overall Construction

### Unmitigated Construction

	ROG	NOx	CO	SO2	Fugitive PM10	Exhaust PM10	PM10 Total	Fugitive PM2.5	Exhaust PM2.5	PM2.5 Total	Bio- CO2	NBio- CO2	Total CO2	CH4	N2O	CO2e
Year	tons/yr										MT/yr					
2013	0.31	1.02	0.73	0.00	0.01	0.07	0.08	0.00	0.07	0.07	0.00	115.96	115.96	0.01	0.00	116.21
<b>Total</b>	<b>0.31</b>	<b>1.02</b>	<b>0.73</b>	<b>0.00</b>	<b>0.01</b>	<b>0.07</b>	<b>0.08</b>	<b>0.00</b>	<b>0.07</b>	<b>0.07</b>	<b>0.00</b>	<b>115.96</b>	<b>115.96</b>	<b>0.01</b>	<b>0.00</b>	<b>116.21</b>

### Mitigated Construction

	ROG	NOx	CO	SO2	Fugitive PM10	Exhaust PM10	PM10 Total	Fugitive PM2.5	Exhaust PM2.5	PM2.5 Total	Bio- CO2	NBio- CO2	Total CO2	CH4	N2O	CO2e
Year	tons/yr										MT/yr					
2013	0.31	1.02	0.73	0.00	0.01	0.07	0.08	0.00	0.07	0.07	0.00	115.96	115.96	0.01	0.00	116.21
<b>Total</b>	<b>0.31</b>	<b>1.02</b>	<b>0.73</b>	<b>0.00</b>	<b>0.01</b>	<b>0.07</b>	<b>0.08</b>	<b>0.00</b>	<b>0.07</b>	<b>0.07</b>	<b>0.00</b>	<b>115.96</b>	<b>115.96</b>	<b>0.01</b>	<b>0.00</b>	<b>116.21</b>



## 2.2 Overall Operational

### Unmitigated Operational

	ROG	NOx	CO	SO2	Fugitive PM10	Exhaust PM10	PM10 Total	Fugitive PM2.5	Exhaust PM2.5	PM2.5 Total	Bio- CO2	NBio-CO2	Total CO2	CH4	N2O	CO2e
Category	tons/yr										MT/yr					
Area	0.23	0.00	0.40	0.00		0.00	0.02		0.00	0.02	1.91	11.47	13.38	0.01	0.00	13.60
Energy	0.00	0.02	0.01	0.00		0.00	0.00		0.00	0.00	0.00	46.78	46.78	0.00	0.00	47.07
Mobile	0.14	0.35	1.38	0.00	0.21	0.02	0.23	0.01	0.02	0.02	0.00	201.13	201.13	0.01	0.00	201.33
Waste						0.00	0.00		0.00	0.00	1.68	0.00	1.68	0.10	0.00	3.77
Water						0.00	0.00		0.00	0.00	0.00	6.84	6.84	0.04	0.00	7.91
<b>Total</b>	<b>0.37</b>	<b>0.37</b>	<b>1.79</b>	<b>0.00</b>	<b>0.21</b>	<b>0.02</b>	<b>0.25</b>	<b>0.01</b>	<b>0.02</b>	<b>0.04</b>	<b>3.59</b>	<b>266.22</b>	<b>269.81</b>	<b>0.16</b>	<b>0.00</b>	<b>273.68</b>

## 2.2 Overall Operational

### Mitigated Operational

	ROG	NOx	CO	SO2	Fugitive PM10	Exhaust PM10	PM10 Total	Fugitive PM2.5	Exhaust PM2.5	PM2.5 Total	Bio- CO2	NBio-CO2	Total CO2	CH4	N2O	CO2e
Category	tons/yr										MT/yr					
Area	0.23	0.00	0.40	0.00		0.00	0.02		0.00	0.02	1.91	11.47	13.38	0.01	0.00	13.60
Energy	0.00	0.02	0.01	0.00		0.00	0.00		0.00	0.00	0.00	46.78	46.78	0.00	0.00	47.07
Mobile	0.14	0.35	1.38	0.00	0.21	0.02	0.23	0.01	0.02	0.02	0.00	201.13	201.13	0.01	0.00	201.33
Waste						0.00	0.00		0.00	0.00	1.68	0.00	1.68	0.10	0.00	3.77
Water						0.00	0.00		0.00	0.00	0.00	6.84	6.84	0.04	0.00	7.91
<b>Total</b>	<b>0.37</b>	<b>0.37</b>	<b>1.79</b>	<b>0.00</b>	<b>0.21</b>	<b>0.02</b>	<b>0.25</b>	<b>0.01</b>	<b>0.02</b>	<b>0.04</b>	<b>3.59</b>	<b>266.22</b>	<b>269.81</b>	<b>0.16</b>	<b>0.00</b>	<b>273.68</b>

## 3.0 Construction Detail

---

### 3.1 Mitigation Measures Construction

- Use Soil Stabilizer
- Replace Ground Cover
- Water Exposed Area



### 3.2 Site Preparation - 2013

#### Unmitigated Construction On-Site

	ROG	NOx	CO	SO2	Fugitive PM10	Exhaust PM10	PM10 Total	Fugitive PM2.5	Exhaust PM2.5	PM2.5 Total	Bio- CO2	NBio- CO2	Total CO2	CH4	N2O	CO2e
Category	tons/yr										MT/yr					
Fugitive Dust					0.00	0.00	0.00	0.00	0.00	0.00	0.00	0.00	0.00	0.00	0.00	0.00
Off-Road	0.00	0.01	0.00	0.00		0.00	0.00		0.00	0.00	0.00	0.64	0.64	0.00	0.00	0.64
<b>Total</b>	<b>0.00</b>	<b>0.01</b>	<b>0.00</b>	<b>0.00</b>	<b>0.00</b>	<b>0.00</b>	<b>0.00</b>	<b>0.00</b>	<b>0.00</b>	<b>0.00</b>	<b>0.00</b>	<b>0.64</b>	<b>0.64</b>	<b>0.00</b>	<b>0.00</b>	<b>0.64</b>

#### Unmitigated Construction Off-Site

	ROG	NOx	CO	SO2	Fugitive PM10	Exhaust PM10	PM10 Total	Fugitive PM2.5	Exhaust PM2.5	PM2.5 Total	Bio- CO2	NBio- CO2	Total CO2	CH4	N2O	CO2e
Category	tons/yr										MT/yr					
Hauling	0.00	0.00	0.00	0.00	0.00	0.00	0.00	0.00	0.00	0.00	0.00	0.00	0.00	0.00	0.00	0.00
Vendor	0.00	0.00	0.00	0.00	0.00	0.00	0.00	0.00	0.00	0.00	0.00	0.00	0.00	0.00	0.00	0.00
Worker	0.00	0.00	0.00	0.00	0.00	0.00	0.00	0.00	0.00	0.00	0.00	0.03	0.03	0.00	0.00	0.03
<b>Total</b>	<b>0.00</b>	<b>0.00</b>	<b>0.00</b>	<b>0.00</b>	<b>0.00</b>	<b>0.00</b>	<b>0.00</b>	<b>0.00</b>	<b>0.00</b>	<b>0.00</b>	<b>0.00</b>	<b>0.03</b>	<b>0.03</b>	<b>0.00</b>	<b>0.00</b>	<b>0.03</b>

### 3.2 Site Preparation - 2013

#### Mitigated Construction On-Site

	ROG	NOx	CO	SO2	Fugitive PM10	Exhaust PM10	PM10 Total	Fugitive PM2.5	Exhaust PM2.5	PM2.5 Total	Bio- CO2	NBio-CO2	Total CO2	CH4	N2O	CO2e
Category	tons/yr										MT/yr					
Fugitive Dust					0.00	0.00	0.00	0.00	0.00	0.00	0.00	0.00	0.00	0.00	0.00	0.00
Off-Road	0.00	0.01	0.00	0.00		0.00	0.00		0.00	0.00	0.00	0.64	0.64	0.00	0.00	0.64
<b>Total</b>	<b>0.00</b>	<b>0.01</b>	<b>0.00</b>	<b>0.00</b>	<b>0.00</b>	<b>0.00</b>	<b>0.00</b>	<b>0.00</b>	<b>0.00</b>	<b>0.00</b>	<b>0.00</b>	<b>0.64</b>	<b>0.64</b>	<b>0.00</b>	<b>0.00</b>	<b>0.64</b>

#### Mitigated Construction Off-Site

	ROG	NOx	CO	SO2	Fugitive PM10	Exhaust PM10	PM10 Total	Fugitive PM2.5	Exhaust PM2.5	PM2.5 Total	Bio- CO2	NBio-CO2	Total CO2	CH4	N2O	CO2e
Category	tons/yr										MT/yr					
Hauling	0.00	0.00	0.00	0.00	0.00	0.00	0.00	0.00	0.00	0.00	0.00	0.00	0.00	0.00	0.00	0.00
Vendor	0.00	0.00	0.00	0.00	0.00	0.00	0.00	0.00	0.00	0.00	0.00	0.00	0.00	0.00	0.00	0.00
Worker	0.00	0.00	0.00	0.00	0.00	0.00	0.00	0.00	0.00	0.00	0.00	0.03	0.03	0.00	0.00	0.03
<b>Total</b>	<b>0.00</b>	<b>0.00</b>	<b>0.00</b>	<b>0.00</b>	<b>0.00</b>	<b>0.00</b>	<b>0.00</b>	<b>0.00</b>	<b>0.00</b>	<b>0.00</b>	<b>0.00</b>	<b>0.03</b>	<b>0.03</b>	<b>0.00</b>	<b>0.00</b>	<b>0.03</b>

### 3.3 Grading - 2013

#### Unmitigated Construction On-Site

	ROG	NOx	CO	SO2	Fugitive PM10	Exhaust PM10	PM10 Total	Fugitive PM2.5	Exhaust PM2.5	PM2.5 Total	Bio- CO2	NBio-CO2	Total CO2	CH4	N2O	CO2e
Category	tons/yr										MT/yr					
Fugitive Dust					0.00	0.00	0.00	0.00	0.00	0.00	0.00	0.00	0.00	0.00	0.00	0.00
Off-Road	0.00	0.01	0.01	0.00		0.00	0.00		0.00	0.00	0.00	1.34	1.34	0.00	0.00	1.34
<b>Total</b>	<b>0.00</b>	<b>0.01</b>	<b>0.01</b>	<b>0.00</b>	<b>0.00</b>	<b>0.00</b>	<b>0.00</b>	<b>0.00</b>	<b>0.00</b>	<b>0.00</b>	<b>0.00</b>	<b>1.34</b>	<b>1.34</b>	<b>0.00</b>	<b>0.00</b>	<b>1.34</b>

#### Unmitigated Construction Off-Site

	ROG	NOx	CO	SO2	Fugitive PM10	Exhaust PM10	PM10 Total	Fugitive PM2.5	Exhaust PM2.5	PM2.5 Total	Bio- CO2	NBio-CO2	Total CO2	CH4	N2O	CO2e
Category	tons/yr										MT/yr					
Hauling	0.00	0.00	0.00	0.00	0.00	0.00	0.00	0.00	0.00	0.00	0.00	0.00	0.00	0.00	0.00	0.00
Vendor	0.00	0.00	0.00	0.00	0.00	0.00	0.00	0.00	0.00	0.00	0.00	0.00	0.00	0.00	0.00	0.00
Worker	0.00	0.00	0.00	0.00	0.00	0.00	0.00	0.00	0.00	0.00	0.00	0.11	0.11	0.00	0.00	0.11
<b>Total</b>	<b>0.00</b>	<b>0.00</b>	<b>0.00</b>	<b>0.00</b>	<b>0.00</b>	<b>0.00</b>	<b>0.00</b>	<b>0.00</b>	<b>0.00</b>	<b>0.00</b>	<b>0.00</b>	<b>0.11</b>	<b>0.11</b>	<b>0.00</b>	<b>0.00</b>	<b>0.11</b>



### 3.3 Grading - 2013

#### Mitigated Construction On-Site

	ROG	NOx	CO	SO2	Fugitive PM10	Exhaust PM10	PM10 Total	Fugitive PM2.5	Exhaust PM2.5	PM2.5 Total	Bio- CO2	NBio- CO2	Total CO2	CH4	N2O	CO2e
Category	tons/yr										MT/yr					
Fugitive Dust					0.00	0.00	0.00	0.00	0.00	0.00	0.00	0.00	0.00	0.00	0.00	0.00
Off-Road	0.00	0.01	0.01	0.00		0.00	0.00		0.00	0.00	0.00	1.34	1.34	0.00	0.00	1.34
<b>Total</b>	<b>0.00</b>	<b>0.01</b>	<b>0.01</b>	<b>0.00</b>	<b>0.00</b>	<b>0.00</b>	<b>0.00</b>	<b>0.00</b>	<b>0.00</b>	<b>0.00</b>	<b>0.00</b>	<b>1.34</b>	<b>1.34</b>	<b>0.00</b>	<b>0.00</b>	<b>1.34</b>

#### Mitigated Construction Off-Site

	ROG	NOx	CO	SO2	Fugitive PM10	Exhaust PM10	PM10 Total	Fugitive PM2.5	Exhaust PM2.5	PM2.5 Total	Bio- CO2	NBio- CO2	Total CO2	CH4	N2O	CO2e
Category	tons/yr										MT/yr					
Hauling	0.00	0.00	0.00	0.00	0.00	0.00	0.00	0.00	0.00	0.00	0.00	0.00	0.00	0.00	0.00	0.00
Vendor	0.00	0.00	0.00	0.00	0.00	0.00	0.00	0.00	0.00	0.00	0.00	0.00	0.00	0.00	0.00	0.00
Worker	0.00	0.00	0.00	0.00	0.00	0.00	0.00	0.00	0.00	0.00	0.00	0.11	0.11	0.00	0.00	0.11
<b>Total</b>	<b>0.00</b>	<b>0.00</b>	<b>0.00</b>	<b>0.00</b>	<b>0.00</b>	<b>0.00</b>	<b>0.00</b>	<b>0.00</b>	<b>0.00</b>	<b>0.00</b>	<b>0.00</b>	<b>0.11</b>	<b>0.11</b>	<b>0.00</b>	<b>0.00</b>	<b>0.11</b>

### 3.4 Building Construction - 2013

#### Unmitigated Construction On-Site

	ROG	NOx	CO	SO2	Fugitive PM10	Exhaust PM10	PM10 Total	Fugitive PM2.5	Exhaust PM2.5	PM2.5 Total	Bio- CO2	NBio-CO2	Total CO2	CH4	N2O	CO2e
Category	tons/yr										MT/yr					
Off-Road	0.11	0.82	0.54	0.00		0.05	0.05		0.05	0.05	0.00	88.22	88.22	0.01	0.00	88.40
<b>Total</b>	<b>0.11</b>	<b>0.82</b>	<b>0.54</b>	<b>0.00</b>		<b>0.05</b>	<b>0.05</b>		<b>0.05</b>	<b>0.05</b>	<b>0.00</b>	<b>88.22</b>	<b>88.22</b>	<b>0.01</b>	<b>0.00</b>	<b>88.40</b>

#### Unmitigated Construction Off-Site

	ROG	NOx	CO	SO2	Fugitive PM10	Exhaust PM10	PM10 Total	Fugitive PM2.5	Exhaust PM2.5	PM2.5 Total	Bio- CO2	NBio-CO2	Total CO2	CH4	N2O	CO2e
Category	tons/yr										MT/yr					
Hauling	0.00	0.00	0.00	0.00	0.00	0.00	0.00	0.00	0.00	0.00	0.00	0.00	0.00	0.00	0.00	0.00
Vendor	0.00	0.02	0.01	0.00	0.00	0.00	0.00	0.00	0.00	0.00	0.00	2.50	2.50	0.00	0.00	2.50
Worker	0.00	0.00	0.05	0.00	0.01	0.00	0.01	0.00	0.00	0.00	0.00	7.18	7.18	0.00	0.00	7.19
<b>Total</b>	<b>0.00</b>	<b>0.02</b>	<b>0.06</b>	<b>0.00</b>	<b>0.01</b>	<b>0.00</b>	<b>0.01</b>	<b>0.00</b>	<b>0.00</b>	<b>0.00</b>	<b>0.00</b>	<b>9.68</b>	<b>9.68</b>	<b>0.00</b>	<b>0.00</b>	<b>9.69</b>

### 3.4 Building Construction - 2013

#### Mitigated Construction On-Site

	ROG	NOx	CO	SO2	Fugitive PM10	Exhaust PM10	PM10 Total	Fugitive PM2.5	Exhaust PM2.5	PM2.5 Total	Bio- CO2	NBio-CO2	Total CO2	CH4	N2O	CO2e
Category	tons/yr										MT/yr					
Off-Road	0.11	0.82	0.54	0.00		0.05	0.05		0.05	0.05	0.00	88.22	88.22	0.01	0.00	88.40
<b>Total</b>	<b>0.11</b>	<b>0.82</b>	<b>0.54</b>	<b>0.00</b>		<b>0.05</b>	<b>0.05</b>		<b>0.05</b>	<b>0.05</b>	<b>0.00</b>	<b>88.22</b>	<b>88.22</b>	<b>0.01</b>	<b>0.00</b>	<b>88.40</b>

#### Mitigated Construction Off-Site

	ROG	NOx	CO	SO2	Fugitive PM10	Exhaust PM10	PM10 Total	Fugitive PM2.5	Exhaust PM2.5	PM2.5 Total	Bio- CO2	NBio-CO2	Total CO2	CH4	N2O	CO2e
Category	tons/yr										MT/yr					
Hauling	0.00	0.00	0.00	0.00	0.00	0.00	0.00	0.00	0.00	0.00	0.00	0.00	0.00	0.00	0.00	0.00
Vendor	0.00	0.02	0.01	0.00	0.00	0.00	0.00	0.00	0.00	0.00	0.00	2.50	2.50	0.00	0.00	2.50
Worker	0.00	0.00	0.05	0.00	0.01	0.00	0.01	0.00	0.00	0.00	0.00	7.18	7.18	0.00	0.00	7.19
<b>Total</b>	<b>0.00</b>	<b>0.02</b>	<b>0.06</b>	<b>0.00</b>	<b>0.01</b>	<b>0.00</b>	<b>0.01</b>	<b>0.00</b>	<b>0.00</b>	<b>0.00</b>	<b>0.00</b>	<b>9.68</b>	<b>9.68</b>	<b>0.00</b>	<b>0.00</b>	<b>9.69</b>



### 3.5 Architectural Coating - 2013

#### Unmitigated Construction On-Site

	ROG	NOx	CO	SO2	Fugitive PM10	Exhaust PM10	PM10 Total	Fugitive PM2.5	Exhaust PM2.5	PM2.5 Total	Bio- CO2	NBio-CO2	Total CO2	CH4	N2O	CO2e
Category	tons/yr										MT/yr					
Archit. Coating	0.16					0.00	0.00		0.00	0.00	0.00	0.00	0.00	0.00	0.00	0.00
Off-Road	0.02	0.13	0.08	0.00		0.01	0.01		0.01	0.01	0.00	10.84	10.84	0.00	0.00	10.87
<b>Total</b>	<b>0.18</b>	<b>0.13</b>	<b>0.08</b>	<b>0.00</b>		<b>0.01</b>	<b>0.01</b>		<b>0.01</b>	<b>0.01</b>	<b>0.00</b>	<b>10.84</b>	<b>10.84</b>	<b>0.00</b>	<b>0.00</b>	<b>10.87</b>

#### Unmitigated Construction Off-Site

	ROG	NOx	CO	SO2	Fugitive PM10	Exhaust PM10	PM10 Total	Fugitive PM2.5	Exhaust PM2.5	PM2.5 Total	Bio- CO2	NBio-CO2	Total CO2	CH4	N2O	CO2e
Category	tons/yr										MT/yr					
Hauling	0.00	0.00	0.00	0.00	0.00	0.00	0.00	0.00	0.00	0.00	0.00	0.00	0.00	0.00	0.00	0.00
Vendor	0.00	0.00	0.00	0.00	0.00	0.00	0.00	0.00	0.00	0.00	0.00	0.00	0.00	0.00	0.00	0.00
Worker	0.00	0.00	0.01	0.00	0.00	0.00	0.00	0.00	0.00	0.00	0.00	1.41	1.41	0.00	0.00	1.41
<b>Total</b>	<b>0.00</b>	<b>0.00</b>	<b>0.01</b>	<b>0.00</b>	<b>0.00</b>	<b>0.00</b>	<b>0.00</b>	<b>0.00</b>	<b>0.00</b>	<b>0.00</b>	<b>0.00</b>	<b>1.41</b>	<b>1.41</b>	<b>0.00</b>	<b>0.00</b>	<b>1.41</b>

### 3.5 Architectural Coating - 2013

#### Mitigated Construction On-Site

	ROG	NOx	CO	SO2	Fugitive PM10	Exhaust PM10	PM10 Total	Fugitive PM2.5	Exhaust PM2.5	PM2.5 Total	Bio- CO2	NBio-CO2	Total CO2	CH4	N2O	CO2e
Category	tons/yr										MT/yr					
Archit. Coating	0.16					0.00	0.00		0.00	0.00	0.00	0.00	0.00	0.00	0.00	0.00
Off-Road	0.02	0.13	0.08	0.00		0.01	0.01		0.01	0.01	0.00	10.84	10.84	0.00	0.00	10.87
<b>Total</b>	<b>0.18</b>	<b>0.13</b>	<b>0.08</b>	<b>0.00</b>		<b>0.01</b>	<b>0.01</b>		<b>0.01</b>	<b>0.01</b>	<b>0.00</b>	<b>10.84</b>	<b>10.84</b>	<b>0.00</b>	<b>0.00</b>	<b>10.87</b>

#### Mitigated Construction Off-Site

	ROG	NOx	CO	SO2	Fugitive PM10	Exhaust PM10	PM10 Total	Fugitive PM2.5	Exhaust PM2.5	PM2.5 Total	Bio- CO2	NBio-CO2	Total CO2	CH4	N2O	CO2e
Category	tons/yr										MT/yr					
Hauling	0.00	0.00	0.00	0.00	0.00	0.00	0.00	0.00	0.00	0.00	0.00	0.00	0.00	0.00	0.00	0.00
Vendor	0.00	0.00	0.00	0.00	0.00	0.00	0.00	0.00	0.00	0.00	0.00	0.00	0.00	0.00	0.00	0.00
Worker	0.00	0.00	0.01	0.00	0.00	0.00	0.00	0.00	0.00	0.00	0.00	1.41	1.41	0.00	0.00	1.41
<b>Total</b>	<b>0.00</b>	<b>0.00</b>	<b>0.01</b>	<b>0.00</b>	<b>0.00</b>	<b>0.00</b>	<b>0.00</b>	<b>0.00</b>	<b>0.00</b>	<b>0.00</b>	<b>0.00</b>	<b>1.41</b>	<b>1.41</b>	<b>0.00</b>	<b>0.00</b>	<b>1.41</b>

### 3.6 Paving - 2013

#### Unmitigated Construction On-Site

	ROG	NOx	CO	SO2	Fugitive PM10	Exhaust PM10	PM10 Total	Fugitive PM2.5	Exhaust PM2.5	PM2.5 Total	Bio- CO2	NBio-CO2	Total CO2	CH4	N2O	CO2e
Category	tons/yr										MT/yr					
Off-Road	0.01	0.04	0.02	0.00		0.00	0.00		0.00	0.00	0.00	3.19	3.19	0.00	0.00	3.20
Paving	0.00					0.00	0.00		0.00	0.00	0.00	0.00	0.00	0.00	0.00	0.00
<b>Total</b>	<b>0.01</b>	<b>0.04</b>	<b>0.02</b>	<b>0.00</b>		<b>0.00</b>	<b>0.00</b>		<b>0.00</b>	<b>0.00</b>	<b>0.00</b>	<b>3.19</b>	<b>3.19</b>	<b>0.00</b>	<b>0.00</b>	<b>3.20</b>

#### Unmitigated Construction Off-Site

	ROG	NOx	CO	SO2	Fugitive PM10	Exhaust PM10	PM10 Total	Fugitive PM2.5	Exhaust PM2.5	PM2.5 Total	Bio- CO2	NBio-CO2	Total CO2	CH4	N2O	CO2e
Category	tons/yr										MT/yr					
Hauling	0.00	0.00	0.00	0.00	0.00	0.00	0.00	0.00	0.00	0.00	0.00	0.00	0.00	0.00	0.00	0.00
Vendor	0.00	0.00	0.00	0.00	0.00	0.00	0.00	0.00	0.00	0.00	0.00	0.00	0.00	0.00	0.00	0.00
Worker	0.00	0.00	0.00	0.00	0.00	0.00	0.00	0.00	0.00	0.00	0.00	0.50	0.50	0.00	0.00	0.50
<b>Total</b>	<b>0.00</b>	<b>0.00</b>	<b>0.00</b>	<b>0.00</b>	<b>0.00</b>	<b>0.00</b>	<b>0.00</b>	<b>0.00</b>	<b>0.00</b>	<b>0.00</b>	<b>0.00</b>	<b>0.50</b>	<b>0.50</b>	<b>0.00</b>	<b>0.00</b>	<b>0.50</b>



### 3.6 Paving - 2013

#### Mitigated Construction On-Site

	ROG	NOx	CO	SO2	Fugitive PM10	Exhaust PM10	PM10 Total	Fugitive PM2.5	Exhaust PM2.5	PM2.5 Total	Bio- CO2	NBio-CO2	Total CO2	CH4	N2O	CO2e
Category	tons/yr										MT/yr					
Off-Road	0.01	0.04	0.02	0.00		0.00	0.00		0.00	0.00	0.00	3.19	3.19	0.00	0.00	3.20
Paving	0.00					0.00	0.00		0.00	0.00	0.00	0.00	0.00	0.00	0.00	0.00
<b>Total</b>	<b>0.01</b>	<b>0.04</b>	<b>0.02</b>	<b>0.00</b>		<b>0.00</b>	<b>0.00</b>		<b>0.00</b>	<b>0.00</b>	<b>0.00</b>	<b>3.19</b>	<b>3.19</b>	<b>0.00</b>	<b>0.00</b>	<b>3.20</b>

#### Mitigated Construction Off-Site

	ROG	NOx	CO	SO2	Fugitive PM10	Exhaust PM10	PM10 Total	Fugitive PM2.5	Exhaust PM2.5	PM2.5 Total	Bio- CO2	NBio-CO2	Total CO2	CH4	N2O	CO2e
Category	tons/yr										MT/yr					
Hauling	0.00	0.00	0.00	0.00	0.00	0.00	0.00	0.00	0.00	0.00	0.00	0.00	0.00	0.00	0.00	0.00
Vendor	0.00	0.00	0.00	0.00	0.00	0.00	0.00	0.00	0.00	0.00	0.00	0.00	0.00	0.00	0.00	0.00
Worker	0.00	0.00	0.00	0.00	0.00	0.00	0.00	0.00	0.00	0.00	0.00	0.50	0.50	0.00	0.00	0.50
<b>Total</b>	<b>0.00</b>	<b>0.00</b>	<b>0.00</b>	<b>0.00</b>	<b>0.00</b>	<b>0.00</b>	<b>0.00</b>	<b>0.00</b>	<b>0.00</b>	<b>0.00</b>	<b>0.00</b>	<b>0.50</b>	<b>0.50</b>	<b>0.00</b>	<b>0.00</b>	<b>0.50</b>

### 4.0 Mobile Detail

#### 4.1 Mitigation Measures Mobile

	ROG	NOx	CO	SO2	Fugitive PM10	Exhaust PM10	PM10 Total	Fugitive PM2.5	Exhaust PM2.5	PM2.5 Total	Bio- CO2	NBio- CO2	Total CO2	CH4	N2O	CO2e
Category	tons/yr										MT/yr					
Mitigated	0.14	0.35	1.38	0.00	0.21	0.02	0.23	0.01	0.02	0.02	0.00	201.13	201.13	0.01	0.00	201.33
Unmitigated	0.14	0.35	1.38	0.00	0.21	0.02	0.23	0.01	0.02	0.02	0.00	201.13	201.13	0.01	0.00	201.33
<b>Total</b>	<b>NA</b>	<b>NA</b>	<b>NA</b>	<b>NA</b>	<b>NA</b>	<b>NA</b>	<b>NA</b>	<b>NA</b>	<b>NA</b>	<b>NA</b>	<b>NA</b>	<b>NA</b>	<b>NA</b>	<b>NA</b>	<b>NA</b>	<b>NA</b>

#### 4.2 Trip Summary Information

Land Use	Average Daily Trip Rate			Unmitigated	Mitigated
	Weekday	Saturday	Sunday	Annual VMT	Annual VMT
Condo/Townhouse	118.62	128.88	109.26	395,501	395,501
<b>Total</b>	<b>118.62</b>	<b>128.88</b>	<b>109.26</b>	<b>395,501</b>	<b>395,501</b>

#### 4.3 Trip Type Information

Land Use	Miles			Trip %		
	H-W or C-W	H-S or C-C	H-O or C-NW	H-W or C-W	H-S or C-C	H-O or C-NW
Condo/Townhouse	12.70	7.00	9.50	40.20	19.20	40.60

### 5.0 Energy Detail

---

### 5.1 Mitigation Measures Energy

	ROG	NOx	CO	SO2	Fugitive PM10	Exhaust PM10	PM10 Total	Fugitive PM2.5	Exhaust PM2.5	PM2.5 Total	Bio- CO2	NBio- CO2	Total CO2	CH4	N2O	CO2e
Category	tons/yr										MT/yr					
Electricity Mitigated						0.00	0.00		0.00	0.00	0.00	22.17	22.17	0.00	0.00	22.31
Electricity Unmitigated						0.00	0.00		0.00	0.00	0.00	22.17	22.17	0.00	0.00	22.31
NaturalGas Mitigated	0.00	0.02	0.01	0.00		0.00	0.00		0.00	0.00	0.00	24.61	24.61	0.00	0.00	24.76
NaturalGas Unmitigated	0.00	0.02	0.01	0.00		0.00	0.00		0.00	0.00	0.00	24.61	24.61	0.00	0.00	24.76
<b>Total</b>	<b>NA</b>	<b>NA</b>	<b>NA</b>	<b>NA</b>	<b>NA</b>	<b>NA</b>	<b>NA</b>	<b>NA</b>	<b>NA</b>	<b>NA</b>	<b>NA</b>	<b>NA</b>	<b>NA</b>	<b>NA</b>	<b>NA</b>	<b>NA</b>

### 5.2 Energy by Land Use - NaturalGas

#### Unmitigated

	NaturalGas Use	ROG	NOx	CO	SO2	Fugitive PM10	Exhaust PM10	PM10 Total	Fugitive PM2.5	Exhaust PM2.5	PM2.5 Total	Bio- CO2	NBio- CO2	Total CO2	CH4	N2O	CO2e
Land Use	kBTU	tons/yr										MT/yr					
Condo/Townhouse	461183	0.00	0.02	0.01	0.00		0.00	0.00		0.00	0.00	0.00	24.61	24.61	0.00	0.00	24.76
<b>Total</b>		<b>0.00</b>	<b>0.02</b>	<b>0.01</b>	<b>0.00</b>		<b>0.00</b>	<b>0.00</b>		<b>0.00</b>	<b>0.00</b>	<b>0.00</b>	<b>24.61</b>	<b>24.61</b>	<b>0.00</b>	<b>0.00</b>	<b>24.76</b>



### 5.2 Energy by Land Use - NaturalGas

**Mitigated**

	NaturalGas Use	ROG	NOx	CO	SO2	Fugitive PM10	Exhaust PM10	PM10 Total	Fugitive PM2.5	Exhaust PM2.5	PM2.5 Total	Bio- CO2	NBio-CO2	Total CO2	CH4	N2O	CO2e
Land Use	kBTU	tons/yr										MT/yr					
Condo/Townhouse	461183	0.00	0.02	0.01	0.00		0.00	0.00		0.00	0.00	0.00	24.61	24.61	0.00	0.00	24.76
<b>Total</b>		<b>0.00</b>	<b>0.02</b>	<b>0.01</b>	<b>0.00</b>		<b>0.00</b>	<b>0.00</b>		<b>0.00</b>	<b>0.00</b>	<b>0.00</b>	<b>24.61</b>	<b>24.61</b>	<b>0.00</b>	<b>0.00</b>	<b>24.76</b>

### 5.3 Energy by Land Use - Electricity

**Unmitigated**

	Electricity Use	ROG	NOx	CO	SO2	Total CO2	CH4	N2O	CO2e
Land Use	kWh	tons/yr				MT/yr			
Condo/Townhouse	76206.8					22.17	0.00	0.00	22.31
<b>Total</b>						<b>22.17</b>	<b>0.00</b>	<b>0.00</b>	<b>22.31</b>

### 5.3 Energy by Land Use - Electricity

#### Mitigated

	Electricity Use	ROG	NOx	CO	SO2	Total CO2	CH4	N2O	CO2e
Land Use	kWh	tons/yr				MT/yr			
Condo/Townhouse	76206.8					22.17	0.00	0.00	22.31
<b>Total</b>						<b>22.17</b>	<b>0.00</b>	<b>0.00</b>	<b>22.31</b>

### 6.0 Area Detail

---

#### 6.1 Mitigation Measures Area

	ROG	NOx	CO	SO2	Fugitive PM10	Exhaust PM10	PM10 Total	Fugitive PM2.5	Exhaust PM2.5	PM2.5 Total	Bio- CO2	NBio- CO2	Total CO2	CH4	N2O	CO2e
Category	tons/yr										MT/yr					
Mitigated	0.23	0.00	0.40	0.00		0.00	0.02		0.00	0.02	1.91	11.47	13.38	0.01	0.00	13.60
Unmitigated	0.23	0.00	0.40	0.00		0.00	0.02		0.00	0.02	1.91	11.47	13.38	0.01	0.00	13.60
<b>Total</b>	<b>NA</b>	<b>NA</b>	<b>NA</b>	<b>NA</b>	<b>NA</b>	<b>NA</b>	<b>NA</b>	<b>NA</b>	<b>NA</b>	<b>NA</b>	<b>NA</b>	<b>NA</b>	<b>NA</b>	<b>NA</b>	<b>NA</b>	<b>NA</b>

## 6.2 Area by SubCategory

### Unmitigated

	ROG	NOx	CO	SO2	Fugitive PM10	Exhaust PM10	PM10 Total	Fugitive PM2.5	Exhaust PM2.5	PM2.5 Total	Bio- CO2	NBio- CO2	Total CO2	CH4	N2O	CO2e	
SubCategory	tons/yr										MT/yr						
Architectural Coating	0.02					0.00	0.00		0.00	0.00	0.00	0.00	0.00	0.00	0.00	0.00	0.00
Consumer Products	0.15					0.00	0.00		0.00	0.00	0.00	0.00	0.00	0.00	0.00	0.00	0.00
Hearth	0.06	0.00	0.11	0.00		0.00	0.02		0.00	0.02	1.91	11.02	12.93	0.01	0.00	13.14	
Landscaping	0.01	0.00	0.28	0.00		0.00	0.00		0.00	0.00	0.00	0.45	0.45	0.00	0.00	0.46	
<b>Total</b>	<b>0.24</b>	<b>0.00</b>	<b>0.39</b>	<b>0.00</b>		<b>0.00</b>	<b>0.02</b>		<b>0.00</b>	<b>0.02</b>	<b>1.91</b>	<b>11.47</b>	<b>13.38</b>	<b>0.01</b>	<b>0.00</b>	<b>13.60</b>	

### Mitigated

	ROG	NOx	CO	SO2	Fugitive PM10	Exhaust PM10	PM10 Total	Fugitive PM2.5	Exhaust PM2.5	PM2.5 Total	Bio- CO2	NBio- CO2	Total CO2	CH4	N2O	CO2e
SubCategory	tons/yr										MT/yr					
Architectural Coating	0.02					0.00	0.00		0.00	0.00	0.00	0.00	0.00	0.00	0.00	0.00
Consumer Products	0.15					0.00	0.00		0.00	0.00	0.00	0.00	0.00	0.00	0.00	0.00
Hearth	0.06	0.00	0.11	0.00		0.00	0.02		0.00	0.02	1.91	11.02	12.93	0.01	0.00	13.14
Landscaping	0.01	0.00	0.28	0.00		0.00	0.00		0.00	0.00	0.00	0.45	0.45	0.00	0.00	0.46
<b>Total</b>	<b>0.24</b>	<b>0.00</b>	<b>0.39</b>	<b>0.00</b>		<b>0.00</b>	<b>0.02</b>		<b>0.00</b>	<b>0.02</b>	<b>1.91</b>	<b>11.47</b>	<b>13.38</b>	<b>0.01</b>	<b>0.00</b>	<b>13.60</b>



## 7.0 Water Detail

---

### 7.1 Mitigation Measures Water

	ROG	NOx	CO	SO2	Total CO2	CH4	N2O	CO2e
Category	tons/yr				MT/yr			
Mitigated					6.84	0.04	0.00	7.91
Unmitigated					6.84	0.04	0.00	7.91
<b>Total</b>	<b>NA</b>	<b>NA</b>	<b>NA</b>	<b>NA</b>	<b>NA</b>	<b>NA</b>	<b>NA</b>	<b>NA</b>

### 7.2 Water by Land Use

#### Unmitigated

	Indoor/Outdoor Use	ROG	NOx	CO	SO2	Total CO2	CH4	N2O	CO2e
Land Use	Mgal	tons/yr				MT/yr			
Condo/Townhouse	1.17277 / 0.739357					6.84	0.04	0.00	7.91
<b>Total</b>						<b>6.84</b>	<b>0.04</b>	<b>0.00</b>	<b>7.91</b>

## 7.2 Water by Land Use

### Mitigated

	Indoor/Outdoor Use	ROG	NOx	CO	SO2	Total CO2	CH4	N2O	CO2e
Land Use	Mgal	tons/yr				MT/yr			
Condo/Townhouse	1.17277 / 0.739357					6.84	0.04	0.00	7.91
<b>Total</b>						<b>6.84</b>	<b>0.04</b>	<b>0.00</b>	<b>7.91</b>

## 8.0 Waste Detail

---

### 8.1 Mitigation Measures Waste

#### Category/Year

	ROG	NOx	CO	SO2	Total CO2	CH4	N2O	CO2e
	tons/yr				MT/yr			
Mitigated					1.68	0.10	0.00	3.77
Unmitigated					1.68	0.10	0.00	3.77
<b>Total</b>	<b>NA</b>	<b>NA</b>	<b>NA</b>	<b>NA</b>	<b>NA</b>	<b>NA</b>	<b>NA</b>	<b>NA</b>

## 8.2 Waste by Land Use

### Unmitigated

	Waste Disposed	ROG	NOx	CO	SO2	Total CO2	CH4	N2O	CO2e
Land Use	tons	tons/yr				MT/yr			
Condo/Townhouse	8.28					1.68	0.10	0.00	3.77
<b>Total</b>						<b>1.68</b>	<b>0.10</b>	<b>0.00</b>	<b>3.77</b>

### Mitigated

	Waste Disposed	ROG	NOx	CO	SO2	Total CO2	CH4	N2O	CO2e
Land Use	tons	tons/yr				MT/yr			
Condo/Townhouse	8.28					1.68	0.10	0.00	3.77
<b>Total</b>						<b>1.68</b>	<b>0.10</b>	<b>0.00</b>	<b>3.77</b>

## 9.0 Vegetation

---

**Hilel Townhomes**  
**Los Angeles-South Coast County, Summer**

**1.0 Project Characteristics**

---

**1.1 Land Usage**

Land Uses	Size	Metric
Condo/Townhouse	18	Dwelling Unit

**1.2 Other Project Characteristics**

<b>Urbanization</b>	Urban	<b>Wind Speed (m/s)</b>	2.2	<b>Utility Company</b>	Southern California Edison
<b>Climate Zone</b>	8	<b>Precipitation Freq (Days)</b>	33		

**1.3 User Entered Comments**

Project Characteristics -  
 Land Use - 0.94 acre ; 41,039 square feet  
 Construction Phase - Painting to occur simultaneous with building construction on completed already completed structures.  
 Construction Off-road Equipment Mitigation -

**2.0 Emissions Summary**

---



## 2.1 Overall Construction (Maximum Daily Emission)

### Unmitigated Construction

	ROG	NOx	CO	SO2	Fugitive PM10	Exhaust PM10	PM10 Total	Fugitive PM2.5	Exhaust PM2.5	PM2.5 Total	Bio- CO2	NBio- CO2	Total CO2	CH4	N2O	CO2e
Year	lb/day										lb/day					
2013	6.72	19.73	14.17	0.03	0.91	1.48	1.95	0.42	1.48	1.49	0.00	2,487.51	0.00	0.27	0.00	2,493.13
<b>Total</b>	<b>NA</b>	<b>NA</b>	<b>NA</b>	<b>NA</b>	<b>NA</b>	<b>NA</b>	<b>NA</b>	<b>NA</b>	<b>NA</b>	<b>NA</b>	<b>NA</b>	<b>NA</b>	<b>NA</b>	<b>NA</b>	<b>NA</b>	<b>NA</b>

### Mitigated Construction

	ROG	NOx	CO	SO2	Fugitive PM10	Exhaust PM10	PM10 Total	Fugitive PM2.5	Exhaust PM2.5	PM2.5 Total	Bio- CO2	NBio- CO2	Total CO2	CH4	N2O	CO2e
Year	lb/day										lb/day					
2013	6.72	19.73	14.17	0.03	0.43	1.48	1.80	0.16	1.48	1.49	0.00	2,487.51	0.00	0.27	0.00	2,493.13
<b>Total</b>	<b>NA</b>	<b>NA</b>	<b>NA</b>	<b>NA</b>	<b>NA</b>	<b>NA</b>	<b>NA</b>	<b>NA</b>	<b>NA</b>	<b>NA</b>	<b>NA</b>	<b>NA</b>	<b>NA</b>	<b>NA</b>	<b>NA</b>	<b>NA</b>

## 2.2 Overall Operational

### Unmitigated Operational

	ROG	NOx	CO	SO2	Fugitive PM10	Exhaust PM10	PM10 Total	Fugitive PM2.5	Exhaust PM2.5	PM2.5 Total	Bio- CO2	NBio- CO2	Total CO2	CH4	N2O	CO2e
Category	lb/day										lb/day					
Area	2.87	0.11	7.51	0.01		0.00	0.96		0.00	0.96	127.02	326.71		0.51	0.01	466.76
Energy	0.01	0.12	0.05	0.00		0.00	0.01		0.00	0.01		148.65		0.00	0.00	149.55
Mobile	0.82	2.03	8.31	0.01	1.42	0.09	1.51	0.05	0.09	0.14		1,381.31		0.07		1,382.86
<b>Total</b>	<b>3.70</b>	<b>2.26</b>	<b>15.87</b>	<b>0.02</b>	<b>1.42</b>	<b>0.09</b>	<b>2.48</b>	<b>0.05</b>	<b>0.09</b>	<b>1.11</b>	<b>127.02</b>	<b>1,856.67</b>		<b>0.58</b>	<b>0.01</b>	<b>1,999.17</b>

### Mitigated Operational

	ROG	NOx	CO	SO2	Fugitive PM10	Exhaust PM10	PM10 Total	Fugitive PM2.5	Exhaust PM2.5	PM2.5 Total	Bio- CO2	NBio- CO2	Total CO2	CH4	N2O	CO2e
Category	lb/day										lb/day					
Area	2.87	0.11	7.51	0.01		0.00	0.96		0.00	0.96	127.02	326.71		0.51	0.01	466.76
Energy	0.01	0.12	0.05	0.00		0.00	0.01		0.00	0.01		148.65		0.00	0.00	149.55
Mobile	0.82	2.03	8.31	0.01	1.42	0.09	1.51	0.05	0.09	0.14		1,381.31		0.07		1,382.86
<b>Total</b>	<b>3.70</b>	<b>2.26</b>	<b>15.87</b>	<b>0.02</b>	<b>1.42</b>	<b>0.09</b>	<b>2.48</b>	<b>0.05</b>	<b>0.09</b>	<b>1.11</b>	<b>127.02</b>	<b>1,856.67</b>		<b>0.58</b>	<b>0.01</b>	<b>1,999.17</b>

## 3.0 Construction Detail

### 3.1 Mitigation Measures Construction

- Use Soil Stabilizer
- Replace Ground Cover
- Water Exposed Area

### 3.2 Site Preparation - 2013

#### Unmitigated Construction On-Site

	ROG	NOx	CO	SO2	Fugitive PM10	Exhaust PM10	PM10 Total	Fugitive PM2.5	Exhaust PM2.5	PM2.5 Total	Bio- CO2	NBio- CO2	Total CO2	CH4	N2O	CO2e
Category	lb/day										lb/day					
Fugitive Dust					0.53	0.00	0.53	0.00	0.00	0.00						0.00
Off-Road	1.72	12.58	8.68	0.01		0.81	0.81		0.81	0.81		1,402.64		0.15		1,405.88
<b>Total</b>	<b>1.72</b>	<b>12.58</b>	<b>8.68</b>	<b>0.01</b>	<b>0.53</b>	<b>0.81</b>	<b>1.34</b>	<b>0.00</b>	<b>0.81</b>	<b>0.81</b>		<b>1,402.64</b>		<b>0.15</b>		<b>1,405.88</b>

### 3.2 Site Preparation - 2013

#### Unmitigated Construction Off-Site

	ROG	NOx	CO	SO2	Fugitive PM10	Exhaust PM10	PM10 Total	Fugitive PM2.5	Exhaust PM2.5	PM2.5 Total	Bio- CO2	NBio- CO2	Total CO2	CH4	N2O	CO2e
Category	lb/day										lb/day					
Hauling	0.00	0.00	0.00	0.00	0.00	0.00	0.00	0.00	0.00	0.00		0.00		0.00		0.00
Vendor	0.00	0.00	0.00	0.00	0.00	0.00	0.00	0.00	0.00	0.00		0.00		0.00		0.00
Worker	0.03	0.03	0.39	0.00	0.08	0.00	0.08	0.00	0.00	0.01		64.24		0.00		64.32
<b>Total</b>	<b>0.03</b>	<b>0.03</b>	<b>0.39</b>	<b>0.00</b>	<b>0.08</b>	<b>0.00</b>	<b>0.08</b>	<b>0.00</b>	<b>0.00</b>	<b>0.01</b>		<b>64.24</b>		<b>0.00</b>		<b>64.32</b>

#### Mitigated Construction On-Site

	ROG	NOx	CO	SO2	Fugitive PM10	Exhaust PM10	PM10 Total	Fugitive PM2.5	Exhaust PM2.5	PM2.5 Total	Bio- CO2	NBio- CO2	Total CO2	CH4	N2O	CO2e
Category	lb/day										lb/day					
Fugitive Dust					0.20	0.00	0.20	0.00	0.00	0.00						0.00
Off-Road	1.72	12.58	8.68	0.01		0.81	0.81		0.81	0.81	0.00	1,402.64		0.15		1,405.88
<b>Total</b>	<b>1.72</b>	<b>12.58</b>	<b>8.68</b>	<b>0.01</b>	<b>0.20</b>	<b>0.81</b>	<b>1.01</b>	<b>0.00</b>	<b>0.81</b>	<b>0.81</b>	<b>0.00</b>	<b>1,402.64</b>		<b>0.15</b>		<b>1,405.88</b>

### 3.2 Site Preparation - 2013

#### Mitigated Construction Off-Site

	ROG	NOx	CO	SO2	Fugitive PM10	Exhaust PM10	PM10 Total	Fugitive PM2.5	Exhaust PM2.5	PM2.5 Total	Bio- CO2	NBio-CO2	Total CO2	CH4	N2O	CO2e
Category	lb/day										lb/day					
Hauling	0.00	0.00	0.00	0.00	0.00	0.00	0.00	0.00	0.00	0.00		0.00		0.00		0.00
Vendor	0.00	0.00	0.00	0.00	0.00	0.00	0.00	0.00	0.00	0.00		0.00		0.00		0.00
Worker	0.03	0.03	0.39	0.00	0.08	0.00	0.08	0.00	0.00	0.01		64.24		0.00		64.32
<b>Total</b>	<b>0.03</b>	<b>0.03</b>	<b>0.39</b>	<b>0.00</b>	<b>0.08</b>	<b>0.00</b>	<b>0.08</b>	<b>0.00</b>	<b>0.00</b>	<b>0.01</b>		<b>64.24</b>		<b>0.00</b>		<b>64.32</b>

### 3.3 Grading - 2013

#### Unmitigated Construction On-Site

	ROG	NOx	CO	SO2	Fugitive PM10	Exhaust PM10	PM10 Total	Fugitive PM2.5	Exhaust PM2.5	PM2.5 Total	Bio- CO2	NBio-CO2	Total CO2	CH4	N2O	CO2e
Category	lb/day										lb/day					
Fugitive Dust					0.75	0.00	0.75	0.41	0.00	0.41						0.00
Off-Road	2.00	13.91	9.51	0.02		1.04	1.04		1.04	1.04		1,476.12		0.18		1,479.88
<b>Total</b>	<b>2.00</b>	<b>13.91</b>	<b>9.51</b>	<b>0.02</b>	<b>0.75</b>	<b>1.04</b>	<b>1.79</b>	<b>0.41</b>	<b>1.04</b>	<b>1.45</b>		<b>1,476.12</b>		<b>0.18</b>		<b>1,479.88</b>



### 3.3 Grading - 2013

#### Unmitigated Construction Off-Site

	ROG	NOx	CO	SO2	Fugitive PM10	Exhaust PM10	PM10 Total	Fugitive PM2.5	Exhaust PM2.5	PM2.5 Total	Bio- CO2	NBio- CO2	Total CO2	CH4	N2O	CO2e
Category	lb/day										lb/day					
Hauling	0.00	0.00	0.00	0.00	0.00	0.00	0.00	0.00	0.00	0.00		0.00		0.00		0.00
Vendor	0.00	0.00	0.00	0.00	0.00	0.00	0.00	0.00	0.00	0.00		0.00		0.00		0.00
Worker	0.07	0.07	0.78	0.00	0.15	0.01	0.16	0.01	0.01	0.01		128.48		0.01		128.65
<b>Total</b>	<b>0.07</b>	<b>0.07</b>	<b>0.78</b>	<b>0.00</b>	<b>0.15</b>	<b>0.01</b>	<b>0.16</b>	<b>0.01</b>	<b>0.01</b>	<b>0.01</b>		<b>128.48</b>		<b>0.01</b>		<b>128.65</b>

#### Mitigated Construction On-Site

	ROG	NOx	CO	SO2	Fugitive PM10	Exhaust PM10	PM10 Total	Fugitive PM2.5	Exhaust PM2.5	PM2.5 Total	Bio- CO2	NBio- CO2	Total CO2	CH4	N2O	CO2e
Category	lb/day										lb/day					
Fugitive Dust					0.28	0.00	0.28	0.15	0.00	0.15						0.00
Off-Road	2.00	13.91	9.51	0.02		1.04	1.04		1.04	1.04	0.00	1,476.12		0.18		1,479.88
<b>Total</b>	<b>2.00</b>	<b>13.91</b>	<b>9.51</b>	<b>0.02</b>	<b>0.28</b>	<b>1.04</b>	<b>1.32</b>	<b>0.15</b>	<b>1.04</b>	<b>1.19</b>	<b>0.00</b>	<b>1,476.12</b>		<b>0.18</b>		<b>1,479.88</b>

### 3.3 Grading - 2013

#### Mitigated Construction Off-Site

	ROG	NOx	CO	SO2	Fugitive PM10	Exhaust PM10	PM10 Total	Fugitive PM2.5	Exhaust PM2.5	PM2.5 Total	Bio- CO2	NBio- CO2	Total CO2	CH4	N2O	CO2e
Category	lb/day										lb/day					
Hauling	0.00	0.00	0.00	0.00	0.00	0.00	0.00	0.00	0.00	0.00		0.00		0.00		0.00
Vendor	0.00	0.00	0.00	0.00	0.00	0.00	0.00	0.00	0.00	0.00		0.00		0.00		0.00
Worker	0.07	0.07	0.78	0.00	0.15	0.01	0.16	0.01	0.01	0.01		128.48		0.01		128.65
<b>Total</b>	<b>0.07</b>	<b>0.07</b>	<b>0.78</b>	<b>0.00</b>	<b>0.15</b>	<b>0.01</b>	<b>0.16</b>	<b>0.01</b>	<b>0.01</b>	<b>0.01</b>		<b>128.48</b>		<b>0.01</b>		<b>128.65</b>

### 3.4 Building Construction - 2013

#### Unmitigated Construction On-Site

	ROG	NOx	CO	SO2	Fugitive PM10	Exhaust PM10	PM10 Total	Fugitive PM2.5	Exhaust PM2.5	PM2.5 Total	Bio- CO2	NBio- CO2	Total CO2	CH4	N2O	CO2e
Category	lb/day										lb/day					
Off-Road	2.20	16.33	10.77	0.02		1.04	1.04		1.04	1.04		1,945.40		0.20		1,949.52
<b>Total</b>	<b>2.20</b>	<b>16.33</b>	<b>10.77</b>	<b>0.02</b>		<b>1.04</b>	<b>1.04</b>		<b>1.04</b>	<b>1.04</b>		<b>1,945.40</b>		<b>0.20</b>		<b>1,949.52</b>