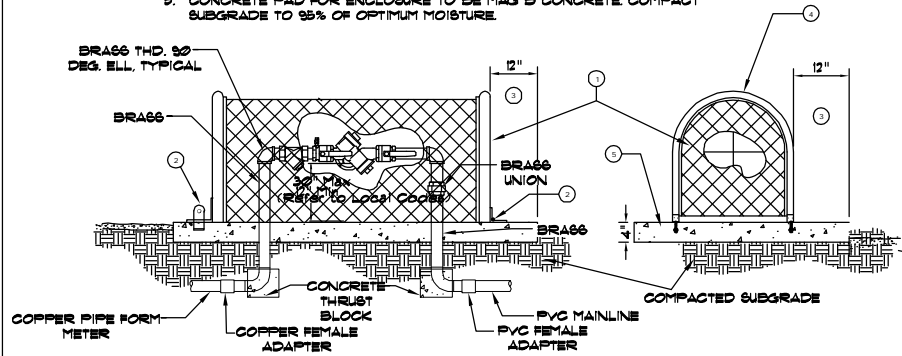
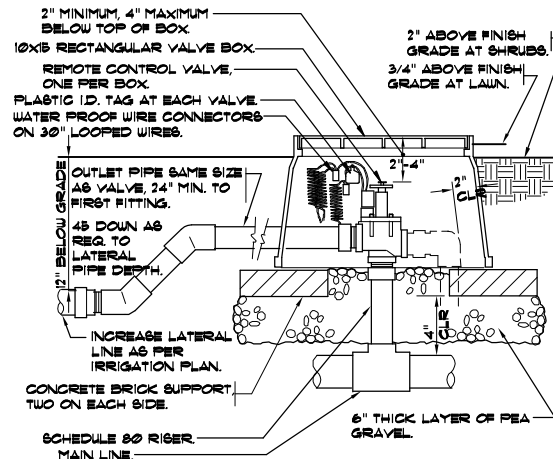


BACKFLOW PREVENTION DEVICE NOTES

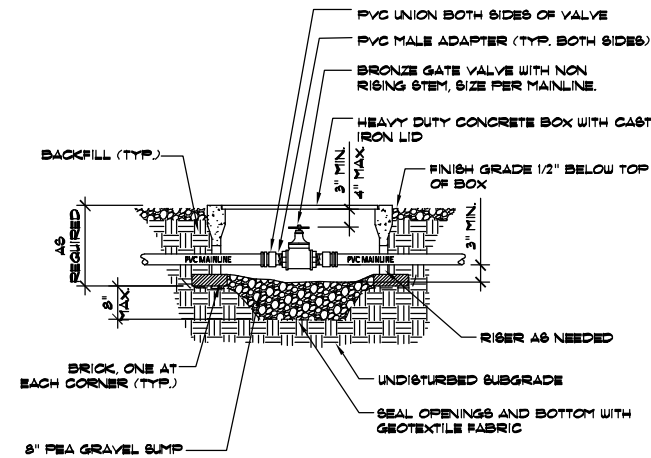
1. PROVIDE PRE-MANUFACTURED ENCLOSURE SIZED TO FIT RFBP UNIT SPECIFIED. ACCEPTABLE MANUFACTURERS ARE LEMUR "BF" SERIES, BPOI "GUARDSHACK" UNITS, OR APPROVED EQUAL.
2. MODIFY PRE-MANUFACTURED UNITS FASTENING SYSTEMS WITH HEAVY DUTY HINGES AND ANCHORING BOLT SYSTEM. SUBMIT SHOP DRAWINGS FOR APPROVAL.
3. PAD TO BE 1" MIN. LARGER THAN ENCLOSURE.
4. SUBMIT CUT SHEETS FOR APPROVAL UNIT TO HAVE POWDER COATED PAINT FINISH, COLOR SELECTED FROM MANUFACTURER'S STD. COLORS.
5. CONCRETE PAD FOR ENCLOSURE TO BE MAG B CONCRETE COMPACT SUBGRADE TO 95% OF OPTIMUM MOISTURE.



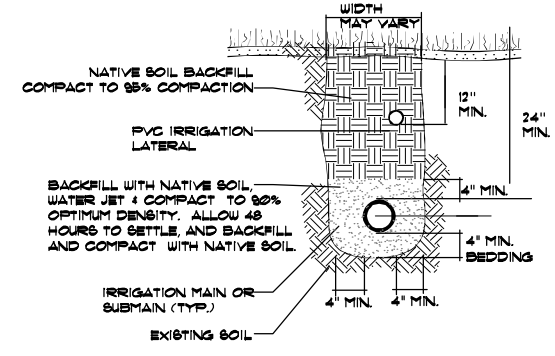
1 FBCO 825Y BACKFLOW PREVENTION DEVICE
NOT TO SCALE



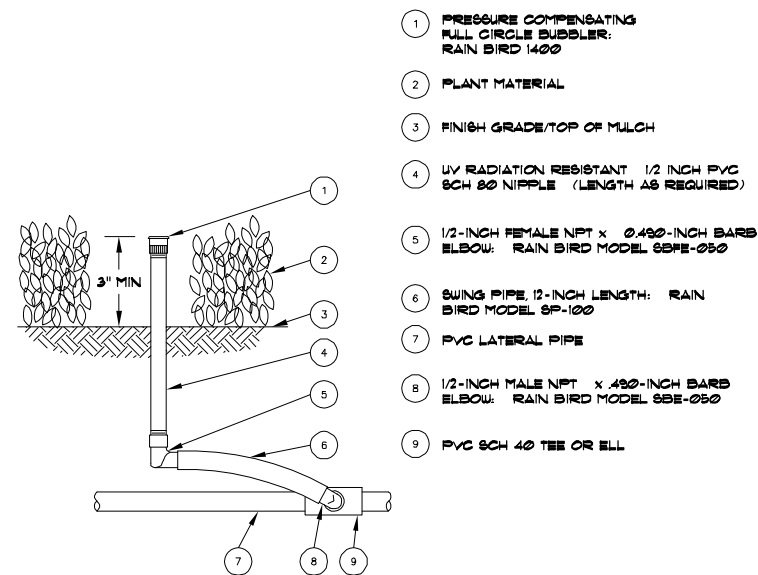
2 ELECTRIC REMOTE CONTROL VALVE
NOT TO SCALE



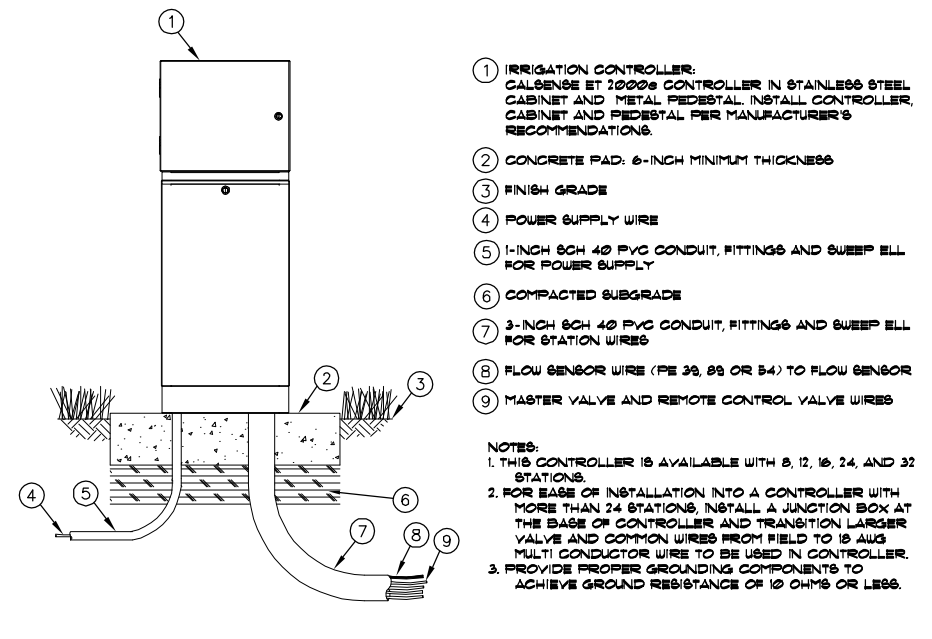
3 GATE VALVE
NOT TO SCALE



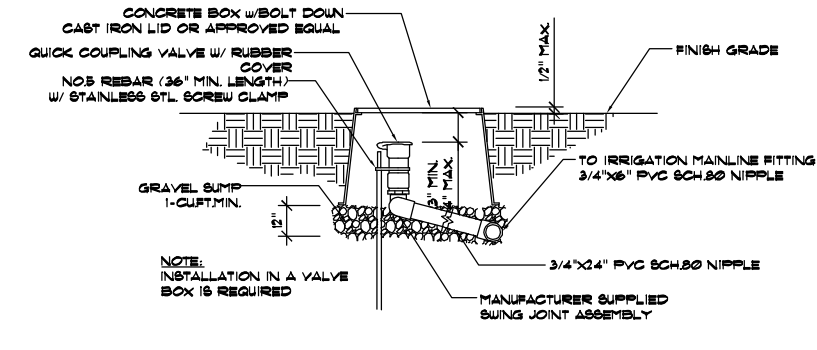
4 TRENCHING DETAIL
NOT TO SCALE



5 BUBBLER ON A RISER
NOT TO SCALE



6 AUTOMATIC CONTROLLER (PEDESTAL MOUNT)
NOT TO SCALE



7 QUICK COUPLER VALVE
NOT TO SCALE

1		50%PS&E		9/9/11
2		75%PS&E		2/28/12
3		90%PS&E		6/8/12
4		100%PS&E		10/5/12
REV	SYMBOL	DESCRIPTION OF CHANGE	RCE	DATE

APPROVED BY:

Kimley-Horn and Associates, Inc.
© 2011 KIMLEY-HORN AND ASSOCIATES, INC.
6800 Owensmouth Avenue, Suite 410, Los Angeles CA
Tel (818) 227-2790 Fax (818) 227-2797

MICHAEL CHOI R.C.E. 67851 DATE

REVIEWED BY:

CHARMAINE YAMBABO DATE
ASSOCIATE CIVIL ENGINEER

APPROVED BY:

RAMIRO ADEVA DATE
CITY ENGINEER

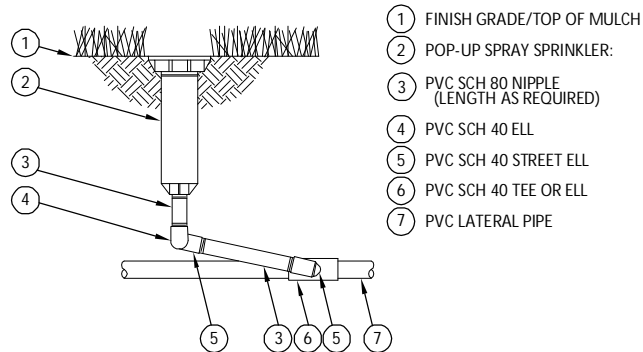
CITY OF
AGOURA HILLS

AGOURA ROAD WIDENING
IRRIGATION DETAILS IR-6

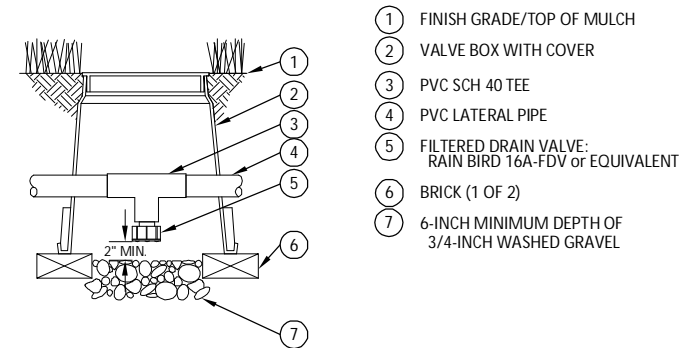
DRAWN BY: JP/RC
CHECKED BY: JS/MC/SC
KHA JOB NUMBER: 099083017

SHEET 88 OF 101

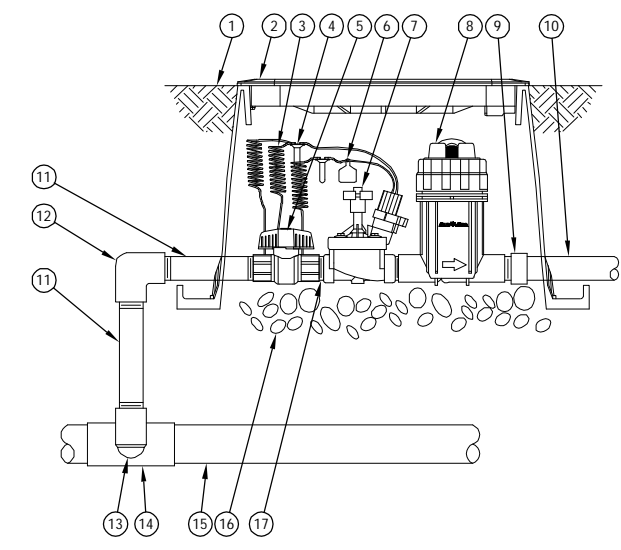
100% SUBMITTAL – OCTOBER 2012



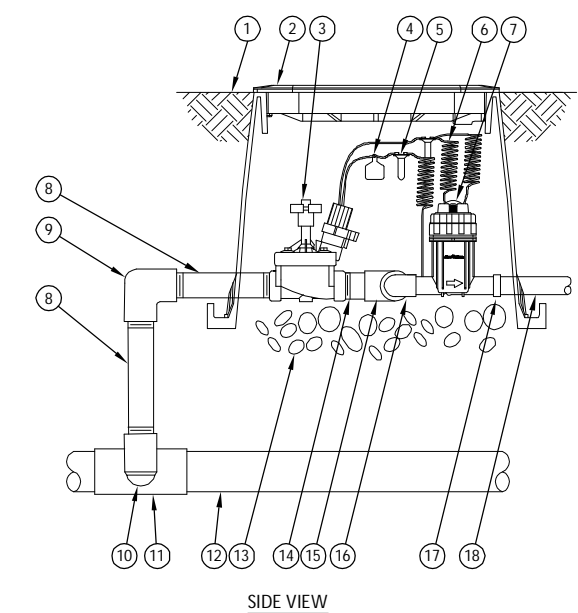
8 POP-UP SPRINKLER HEAD DETAIL
NOT TO SCALE



9 DRAIN VALVE
NOT TO SCALE

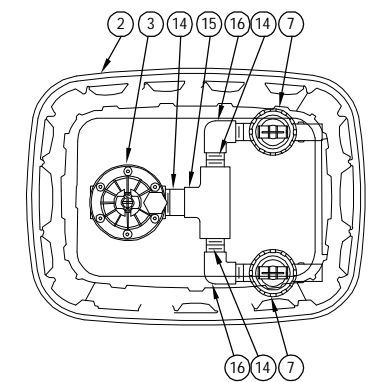


10 DRIP-ZONE CONTROL VALVE (PRB-100)
NOT TO SCALE

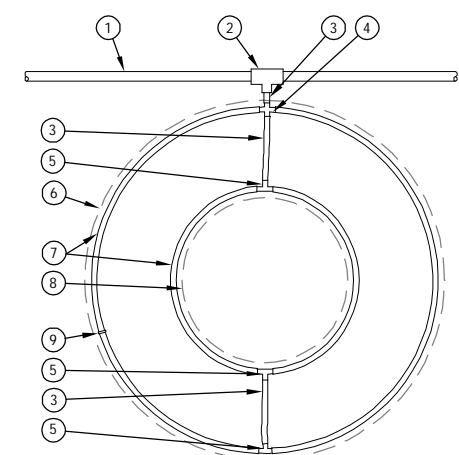


11 DRIP-ZONE CONTROL VALVE (PRB-150)
NOT TO SCALE

- 1 FINISH GRADE/TOP OF MULCH
- 2 VALVE BOX WITH COVER: RAIN BIRD VB-STD
- 3 REMOTE CONTROL VALVE: RAIN BIRD 150-PESB (INCLUDED IN XCZ-PRB-150-COM KIT)
- 4 ID TAG
- 5 WATERPROOF CONNECTION: RAIN BIRD DB SERIES
- 6 30-INCH LINEAR LENGTH OF WIRE, COILED
- 7 PRESSURE REGULATING QUICK CHECK BASKET FILTER: RAIN BIRD PRB-QKCHK-100 (INCLUDED IN XCZ-PRB-150-COM KIT)
- 8 PVC SCH 80 NIPPLE (LENGTH AS REQUIRED)
- 9 PVC SCH 40 ELL
- 10 PVC SCH 80 NIPPLE (2-INCH LENGTH, HIDDEN) AND PVC SCH 40 ELL
- 11 PVC SCH 40 TEE OR ELL
- 12 MAINLINE PIPE
- 13 3-INCH MINIMUM DEPTH OF 3/4-INCH WASHED GRAVEL
- 14 PVC SCH 80 NIPPLE, CLOSE (INCLUDED IN XCZ-PRB-150-COM KIT)
- 15 PVC SCH 40 TEE (INCLUDED IN XCZ-PRB-150-COM KIT)
- 16 PVC SCH 40 ELL (INCLUDED IN XCZ-PRB-150-COM KIT)
- 17 PVC SCH 40 FEMALE ADAPTOR
- 18 LATERAL PIPE



TOP VIEW



12 ON SURFACE DRIP LINE AROUND TREE
NOT TO SCALE

- 1 FINISH GRADE/TOP OF MULCH
- 2 VALVE BOX WITH COVER: RAIN BIRD VB-STD
- 3 30-INCH LINEAR LENGTH OF WIRE, COILED
- 4 WATERPROOF CONNECTION: RAIN BIRD DB SERIES
- 5 1-INCH BALL VALVE (INCLUDED IN XCZ-PRB-100-COM KIT)
- 6 ID TAG
- 7 REMOTE CONTROL VALVE: RAIN BIRD PESB (INCLUDED IN XCZ-PRB-100-COM KIT)
- 8 PRESSURE REGULATING QUICK CHECK BASKET FILTER: RAIN BIRD PRB-QKCHK-100 (INCLUDED IN XCZ-PRB-100-COM KIT)
- 9 LATERAL PIPE
- 10 PVC SCH 80 NIPPLE (LENGTH AS REQUIRED)
- 11 PVC SCH 40 ELL
- 12 PVC SCH 80 NIPPLE (2-INCH LENGTH, HIDDEN) AND PVC SCH 40 ELL
- 13 PVC SCH 40 TEE OR ELL
- 14 MAINLINE PIPE
- 15 3-INCH MINIMUM DEPTH OF 3/4-INCH WASHED GRAVEL
- 16 PVC SCH 80 NIPPLE, CLOSE (INCLUDED IN XCZ-PRB-100-COM KIT)
- 17

NOTES:
 1. DISTANCE BETWEEN LATERAL RINGS AND EMITTER SPACING TO BE BASED ON SOIL TYPE, AND TREE CANOPY. SEE INSTALLATION SPECIFICATIONS ON RAIN BIRD WEB SITE (WWW.RAINBIRD.COM) FOR SUGGESTED SPACING.
 2. PLACE TIE DOWN STAKES EVERY THREE FEET IN SAND, FOUR FEET IN LOAM, AND FIVE FEET IN CLAY.
 3. AT FITTINGS WHERE THERE IS A CHANGE OF DIRECTION SUCH AS TEES OR ELBOWS, USE TIE-DOWN STAKES ON EACH LEG OF THE CHANGE OF DIRECTION.

1		50%PS&E		9/9/11
2		75%PS&E		2/28/12
3		90%PS&E		6/8/12
4		100%PS&E		10/5/12
REV	SYMBOL	DESCRIPTION OF CHANGE	RCE	DATE

APPROVED BY:

Kimley-Horn and Associates, Inc.
 © 2011 KIMLEY-HORN AND ASSOCIATES, INC.
 6800 Owensmouth Avenue, Suite 410, Los Angeles CA
 Tel (818) 227-2790 Fax (818) 227-2797

MICHAEL CHOI R.C.E. 67851 DATE

REVIEWED BY:

CHARMAINE YAMBAO DATE
 ASSOCIATE CIVIL ENGINEER

APPROVED BY:

RAMIRO ADEVA DATE
 CITY ENGINEER

CITY OF

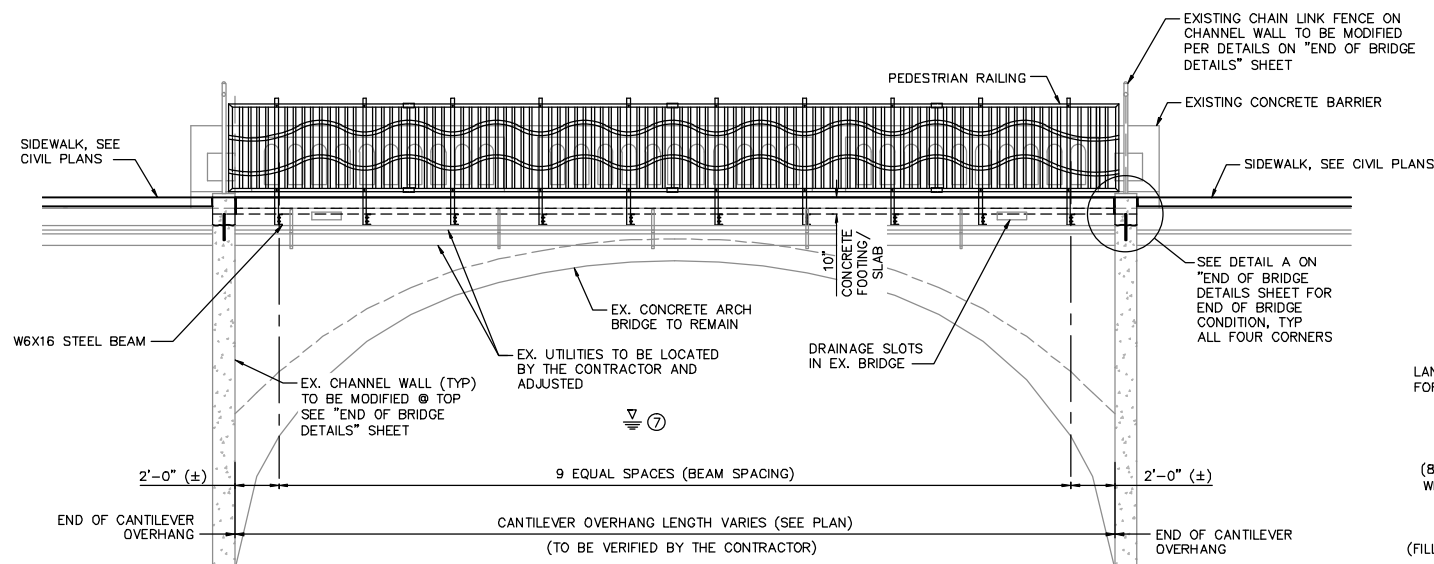
AGOURA HILLS

AGOURA ROAD WIDENING
 IRRIGATION DETAILS IR-7

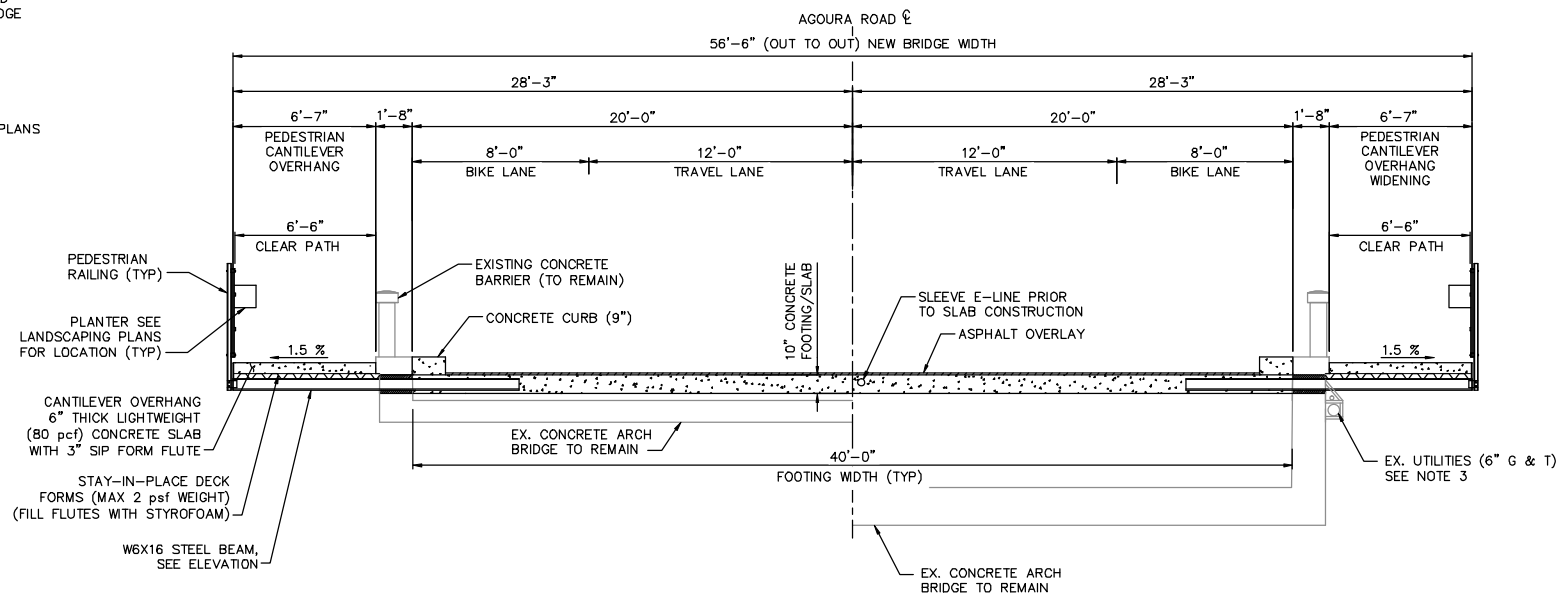
DRAWN BY: JP/RC
 CHECKED BY: JS/MC/SC
 KHA JOB NUMBER: 099083017

SHEET 89 OF 101

100% SUBMITTAL – OCTOBER 2012

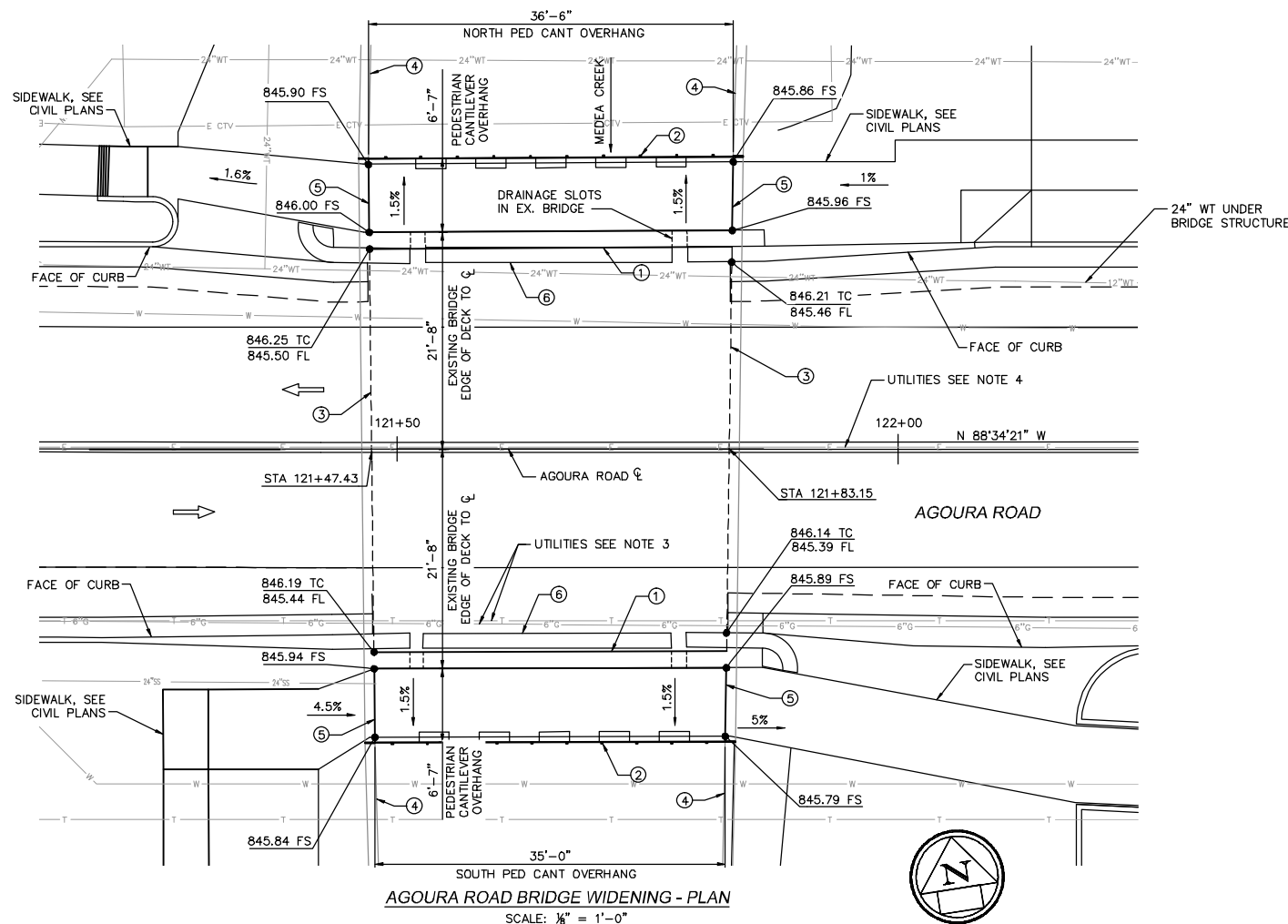


AGOURA ROAD BRIDGE WIDENING - ELEVATION
SCALE: 1/4" = 1'-0"



SECTION AT MID SPAN SECTION AT 1/4 SPAN

AGOURA ROAD BRIDGE WIDENING - TYPICAL SECTION
SCALE: 1/4" = 1'-0"



AGOURA ROAD BRIDGE WIDENING - PLAN
SCALE: 1/8" = 1'-0"

GENERAL NOTES:

- CONTRACTOR SHALL FIELD VERIFY EXISTING CONDITIONS AND NOTIFY ENGINEER OF ANY DISCREPANCIES PRIOR TO STARTING WORK.
- SEE CIVIL AND UTILITY PLANS FOR EXISTING UTILITY INFORMATION AND RELOCATION REQUIREMENTS.
- EXISTING UTILITIES SHOWN ON SIDE OF BRIDGE SHALL BE VERIFIED FOR LOCATION WITH RESPECT TO PEDESTRIAN CANTILEVER OVERHANG AND MAY NEED TO BE RELOCATED.
- E-LINE WILL NEED TO BE IN SERVICE DURING CONSTRUCTION. CONTRACTOR SHALL SLEEVE E-LINE AND POUR SLAB AROUND SLEEVE.
- ALL OTHER UTILITIES SHOWN OTHER THAN COVERED IN NOTES 3 AND 4 ARE NOT IMPACTED BY BRIDGE OVERHANG CONSTRUCTION. IT SHALL BE THE CONTRACTOR'S RESPONSIBILITY TO LOCATE ANY OTHER UTILITIES NOT SHOWN.

INDEX OF DRAWINGS:

- GENERAL PLAN AND TYPICAL SECTION
- GENERAL NOTES AND QUANTITIES
- REMOVAL AND CONSTRUCTION SEQUENCE
- FRAMING PLAN
- TYPICAL DECK SECTIONS
- END OF BRIDGES DETAILS
- PEDESTRIAN RAILING DETAILS

LEGEND:

- ① EXISTING CONCRETE BARRIER (TO REMAIN)
 - ② PEDESTRIAN RAILING
 - ③ LIMITS OF CANTILEVER OVERHANG FOOTING
 - ④ EXST CHANNEL WALL
 - ⑤ END OF CANTILEVER OVERHANG
 - ⑥ CONCRETE CURB
 - ⑦ HIGHWATER @ CREEK
- ⇒ INDICATES DIRECTION OF TRAFFIC

1		50%PS&E		9/9/11
2		75%PS&E		2/28/12
3		90%PS&E		6/8/12
4		100%PS&E		10/5/12
REV	SYMBOL	DESCRIPTION OF CHANGE	RCE	DATE

PREPARED BY:



© 2012 KIMLEY-HORN AND ASSOCIATES, INC.
6800 Owensmouth Avenue, Suite 410, Los Angeles CA
Tel (818) 227-2790 Fax (916) 608-0885



KEVIN KIMM R.C.E. 75462 DATE

REVIEWED BY:

CHARMAINE YAMBAO DATE
ASSOCIATE CIVIL ENGINEER

APPROVED BY:

RAMIRO ADEVA DATE
DIRECTOR OF PUBLIC WORKS/CITY ENGINEER



AGOURA ROAD WIDENING
BRIDGE WIDENING
GENERAL PLAN & TYPICAL SECTION

DRAWN BY: BS	CHECKED BY: KK	KHA JOB NUMBER 099083017
		SHEET 90 OF 101

100% SUBMITTAL - OCTOBER 2012

K:\Projects\Structure\099083017-Agoura Road Widening\GenPlan\099083017.dwg 10-08-12 8:40 AM

GENERAL NOTES:

SPECIFICATIONS:

- DESIGN SPECIFICATIONS: AASHTO LRFD BRIDGE DESIGN SPECIFICATIONS 5th EDITION, 2010 AND AASHTO LRFD GUIDE SPECIFICATIONS FOR PEDESTRIAN BRIDGES, DECEMBER 2009.
- DESIGN LIVE LOAD FOR PEDESTRIAN OVERHANG: 90psf.
- THE GENERAL SPECIFICATIONS WILL CONSIST OF THE STANDARD SPECIFICATIONS FOR PUBLIC WORKS CONSTRUCTION, LATEST EDITION, AND PROJECT SPECIAL PROVISIONS.
- MATERIAL, WORKMANSHIP, AND FABRICATION SHALL BE PERFORMED IN ACCORDANCE WITH THE ABOVE SPECIFICATIONS, SUPPLEMENTAL, AND SPECIAL PROVISIONS.

MATERIALS:

- STRUCTURAL STEEL W SHAPE SHALL BE ASTM A992, GRADE 50.
- STRUCTURAL TUBING FOR PEDESTRIAN RAILING SHALL BE ASTM A500 GRADE B 46 ksi.
- STRUCTURAL PLATE AND MISCELLANEOUS SHAPES SHALL BE ASTM A615.
- DECK CONCRETE SHALL BE LIGHTWEIGHT WITH $f'_c=4,000$ psi. FOOTING SLAB CONCRETE SHALL BE NORMAL WEIGHT CONCRETE $f'_c=4000$ psi.
- REINFORCING STEEL SHALL BE IN ACCORDANCE WITH ASTM A615 GRADE 60, $f_y = 60,000$ PSI.
- STAY-IN-PLACE DECK FORM (SP) SHALL BE ASTM A653, $f_y=38$ ksi.
- STYROFOAM FOR METAL FORM SHALL BE EXPANDED POLYSTYRENE ASTM E2430.

SHOP WELDING AND TESTING NOTES:

- WELDING SHALL BE IN ACCORDANCE WITH THE CURRENT ADDITION OF THE ANSI/AASHTO/AWS BRIDGE WELDING CODE, D1.5.
- NONDESTRUCTIVE TESTING SHALL BE IN ACCORDANCE WITH ANSI/AASHTO/AWS BRIDGE WELDING CODE D1.5, AND CALTRANS SPECIFICATIONS.
- ALL WELDS ARE TO BE SHOP WELDED AND SHALL BE 100% VISUALLY INSPECTED. VISUAL INSPECTION SHALL BE PERFORMED BEFORE, DURING, AND AFTER THE COMPLETION OF WELDING.
- NO FIELD WELDING WILL BE PERMITTED.
- WELD SIZES NOT SHOWN ON PLANS SHALL BE MINIMUM SIZE WELDS PER WELDING CODE.

STRUCTURAL STEEL FINISH NOTES:

- ALL STRUCTURAL STEEL FRAMING AND PEDESTRIAN RAILING FRAMING SHALL BE SHOP PRIMED AND PAINTED IN ACCORDANCE WITH THE REQUIREMENTS OF THE PROJECT SPECIFICATIONS.
- DAMAGE TO SHOP FINISHES SHALL BE REPAIRED IN ACCORDANCE WITH THE REQUIREMENTS OF THE PROJECT SPECIFICATIONS.

IDENTIFICATION MARKING STEEL MEMBER:

ALL STEEL MILL AND FABRICATION IDENTIFICATION MARKINGS FOR STEEL PLATES, SHAPES, OR FABRICATED MEMBERS SHALL BE BY METAL TAGS, SOAPSTONE, OR SOME OTHER READILY REMOVABLE MATERIAL; OR SHALL BE MARKED IN AN AREA OF THE COMPLETED MEMBER WHICH WILL BE ENCASED OR COVERED WITH CONCRETE. DO NOT USE PAINT OR WAX BASED CRAYONS FOR MARKING.

HANDLING AND STORING STEEL MEMBERS:

- STEEL MEMBERS MUST NOT BE GOUGED, SCRATCHED, DENTED, OR ALLOWED TO RUB AGAINST OTHER MEMBERS THAT WOULD RESULT IN DAMAGE TO THE BLAST CLEANED PROFILE OF THE STEEL, MEMBERS SHALL BE HANDLED USING SOFTENERS AND SLINGS INSTEAD OF CHOKERS AND CHAINS.
- STORE MEMBERS IN THE FABRICATION SHOP AND ON THE PROJECT SITE IN SUCH A MANNER AS TO BE KEPT CLEAN OF ALL FOREIGN SUBSTANCES SUCH AS GREASE, OIL, MORTAR, CONCRETE SPLATTER, CHALK AND CRAYON MARKS, PAINT, AND DIRT. ALL STORAGE MUST BE ABOVE GROUND AND SLOPED TO ALLOW FREE DRAINAGE OF RAINWATER AND DEW. IF STORED FOR PERIODS LONGER THAN 3 MONTHS, THE MEMBERS MUST BE PLACED ON METAL SUPPORTS. FOR PERIODS OF STORAGE UP TO 3 MONTHS, MEMBERS MAY BE PLACED ON CLEAN, UNTREATED, WOOD LUMBER OR TIMBERS.
- GIRDERS SHALL BE STORED WITH WEBS IN THE UPRIGHT POSITION. THE MEMBERS MAY BE STACKED PROVIDED METAL OR WOOD SUPPORTS SEPARATE INDIVIDUAL MEMBERS. UNDER NO CIRCUMSTANCES SHOULD MEMBERS BE NESTED TOGETHER OR BUNDLED.

BEVELED EDGES:

ALL EXPOSED CONCRETE EDGES SHALL BE BEVELED 3/4" ON THE SUPERSTRUCTURE AND 1" ON THE SUBSTRUCTURE UNLESS OTHERWISE NOTED.

UTILITIES:

THE EXACT LOCATIONS OF UTILITIES HAVE NOT BEEN INDICATED ON THE CONSTRUCTION DRAWINGS. THE CONTRACTOR SHALL DETERMINE THE EXACT LOCATION OF ALL UTILITIES AND UNDERGROUND FACILITIES PRIOR TO DOING ANY WORK THAT MAY DAMAGE SUCH FACILITIES, OR IMPACT OR INTERFERE WITH THEIR SERVICE.

DIMENSIONS:

THE CONTRACTOR SHALL EXAMINE AND VERIFY, IN THE FIELD, ALL CONDITIONS AND DIMENSIONS. DIMENSIONS OF THE EXISTING STRUCTURE(S) SHOWN ON THESE PLANS ARE FOR GENERAL REFERENCE ONLY. THEY HAVE BEEN TAKEN FROM THE ORIGINAL CONSTRUCTION DRAWINGS AND MAY OR MAY NOT REFLECT ACTUAL "AS-BUILT" CONDITIONS AND ARE NOT GUARANTEED. THE CONTRACTOR SHALL TAKE ALL SUCH FIELD MEASUREMENTS TO ASSURE PROPER FIT OF THE FINISHED WORK, AND THE CONTRACTOR SHALL ASSUME FULL RESPONSIBILITY FOR THEIR ACCURACY. IF FIELD CONDITIONS AND DIMENSIONS DIFFER FROM THOSE SHOWN ON THE PLANS, THE CONTRACTOR SHALL USE THE FIELD CONDITIONS AND DIMENSIONS AND MAKE THE APPROPRIATE CHANGES TO THOSE SHOWN ON THE PLANS AS APPROVED BY THE ENGINEER. WHEN SHOP DRAWINGS BASED ON FIELD MEASUREMENTS ARE SUBMITTED FOR APPROVAL, THE FIELD MEASUREMENTS MADE SHALL BE INDICATED ON THE SHOP DRAWINGS SUBMITTED FOR REFERENCE OF THE REVIEWER.

MAINTENANCE AND PROTECTION OF TRAFFIC:

THE CONTRACTOR SHALL MAINTAIN AND PROTECT ALL TRAFFIC IN ACCORDANCE WITH THE MAINTENANCE AND PROTECTION OF TRAFFIC PLANS AND PROVISIONS OF THE PROJECT SPECIFICATIONS.

DRILL AND BOND DOWELS (EPOXY CARTRIDGE):

DRILLING AND BONDING DOWELS WITH EPOXY CARTRIDGES SHALL CONFORM TO THE DETAILS SHOWN ON THE PLANS AND THE REQUIREMENTS IN THE SPECIAL PROVISIONS. REINFORCING STEEL DOWELS SHALL CONFORM TO THE PROVISIONS IN "REINFORCEMENT" OF THE SPECIAL PROVISIONS.

THE HOLES SHALL BE DRILLED BY METHODS THAT WILL NOT SHATTER OR DAMAGE THE CONCRETE ADJACENT TO THE HOLES. IF REINFORCEMENT IS ENCOUNTERED DURING DRILLING, BEFORE SPECIFIED DEPTH IS ATTAINED, THE ENGINEER SHALL BE NOTIFIED. UNLESS THE ENGINEER APPROVES CORING THROUGH THE REINFORCEMENT, THE HOLE WILL BE REJECTED AND A NEW HOLE, IN WHICH REINFORCEMENT IS NOT ENCOUNTERED, SHALL BE DRILLED ADJACENT TO THE REJECTED HOLE TO THE DEPTH SHOWN ON THE PLANS.

CONCRETE CORE HOLE DRILLING:

CORING CONCRETE SHALL CONSIST OF CORING HOLES THROUGH REINFORCED CONCRETE BRIDGE MEMBERS AS SHOWN ON THE PLANS AND IN CONFORMANCE WITH THE REQUIREMENTS IN THESE SPECIAL PROVISIONS. THE HOLES SHALL BE CORED BY METHODS THAT WILL NOT SHATTER OR DAMAGE THE CONCRETE ADJACENT TO THE HOLES. DAMAGE TO EXISTING REINFORCEMENT FROM CORING OPERATIONS SHALL BE MINIMIZED. LOCATING OF EXISTING REINFORCEMENT SHALL BE MADE BY NON-DESTRUCTIVE METHODS. IF REINFORCEMENT IS TO BE CORED THROUGH, THE ENGINEER SHALL BE NOTIFIED. THE ENGINEER WILL APPROVE OR REJECT THE LOCATION OF THE CORE THROUGH THE REINFORCEMENT.

GENERAL:

- CARE SHOULD BE TAKEN NOT TO DAMAGE THE REINFORCING STEEL OF THE EXISTING BARRIERS THROUGH THE BARRIER WHEN DRILLING AND BONDING THE CONNECTIONS BARS FOR THE PROPOSED END OF BRIDGE CONDITIONS.
- ACCESS TO THE CREEK IS LIMITED DURING CONSTRUCTION. NO SCAFFOLDING OR FALSEWORK IS TO BE PLACED IN THE CREEK DURING CONSTRUCTION. ADDITIONAL MEASURES SHALL BE TAKEN SO CONSTRUCTION MATERIALS (DROPPING DEBRIS, WATER, CONCRETE, REINFORCING) DOES NOT ENTER THE CREEK.

QUANTITIES

DESCRIPTION	UNIT	QTY
BRIDGE BARRIER CORING	EA	20
ROADWAY WORK ON BRIDGE	LS	1
STRUCTURAL CONCRETE (LIGHTWEIGHT)	CY	10
STRUCTURAL CONCRETE (NORMAL WEIGHT)	CY	50
REINFORCING STEEL	LBS	10,500
STRUCTURAL STEEL	LBS	4800
PEDESTRIAN RAILING	LF	80

1		50%PS&E		9/9/11
2		75%PS&E		2/28/12
3		90%PS&E		6/8/12
4		100%PS&E		10/5/12
REV	SYMBOL	DESCRIPTION OF CHANGE	RCE	DATE

PREPARED BY:



Kimley-Horn and Associates, Inc.
 © 2012 KIMLEY-HORN AND ASSOCIATES, INC.
 6800 Owensmouth Avenue, Suite 410, Los Angeles CA
 Tel (818) 227-2790 Fax (916) 608-0885


KEVIN KIMM R.C.E. 75462 DATE

REVIEWED BY:

CHARMAINE YAMBAO DATE
 ASSOCIATE CIVIL ENGINEER

APPROVED BY:

RAMIRO ADEVA DATE
 DIRECTOR OF PUBLIC WORKS/CITY ENGINEER



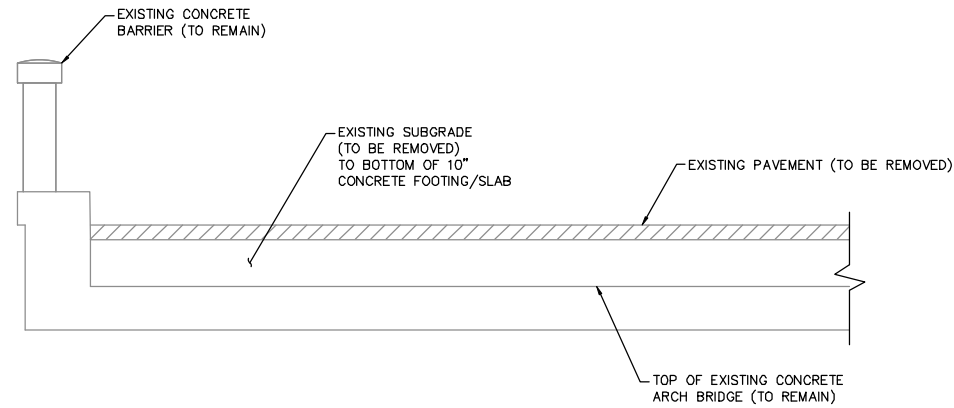

CITY OF
AGOURA HILLS

AGOURA ROAD WIDENING
 BRIDGE WIDENING
 GENERAL NOTES AND QUANTITIES

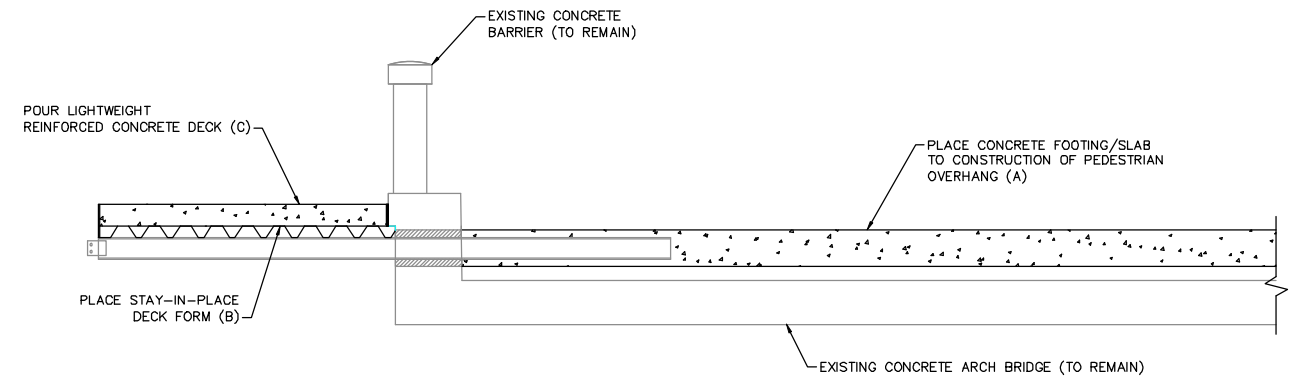
DRAWN BY: BS
 CHECKED BY: KK
 KHA JOB NUMBER: 099083017

SHEET 91 OF 101

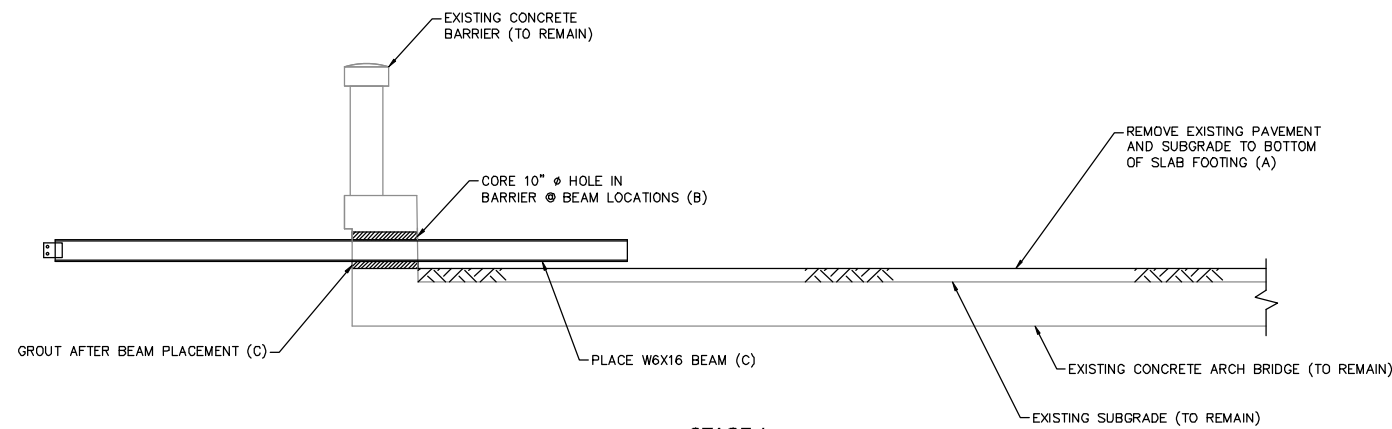
100% SUBMITTAL – OCTOBER 2012



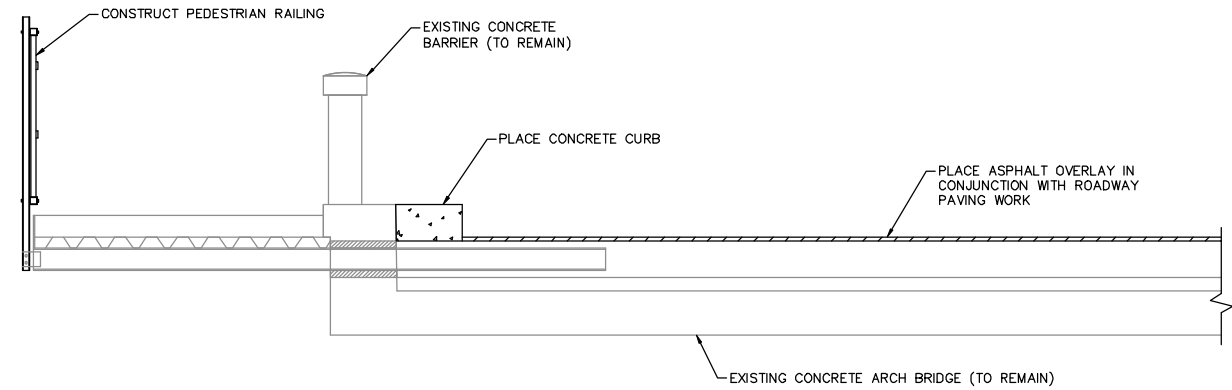
EXISTING CONDITION
SCALE: 1/2" = 1'-0"
(ONE SIDE SHOWN AT MID-SPAN)



STAGE 2
SCALE: 1/2" = 1'-0"
(ONE SIDE SHOWN AT MID-SPAN)



STAGE 1
SCALE: 1/2" = 1'-0"
(ONE SIDE SHOWN AT MID-SPAN)



STAGE 3
SCALE: 1/2" = 1'-0"
(ONE SIDE SHOWN AT MID-SPAN)

LEGEND:

- (A) (B) (C) - INDICATES THE ORDER OF CONSTRUCTION WITHIN EACH STAGE OF CONSTRUCTION.
- CONTRACTOR SHALL SUBMIT ANY DEVIATIONS FROM ABOVE SEQUENCE TO THE ENGINEER FOR REVIEW.

1		50%PS&E		9/9/11
2		75%PS&E		2/28/12
3		90%PS&E		6/8/12
4		100%PS&E		10/5/12
REV	SYMBOL	DESCRIPTION OF CHANGE	RCE	DATE

PREPARED BY:

© 2012 KIMLEY-HORN AND ASSOCIATES, INC.
6800 Owensmouth Avenue, Suite 410, Los Angeles CA
Tel (818) 227-2790 Fax (916) 608-0885

KEVIN KIMM R.C.E. 75462 DATE

REVIEWED BY:

CHARMAINE YAMBAO DATE
ASSOCIATE CIVIL ENGINEER

APPROVED BY:

RAMIRO ADEVA DATE
DIRECTOR OF PUBLIC WORKS/CITY ENGINEER

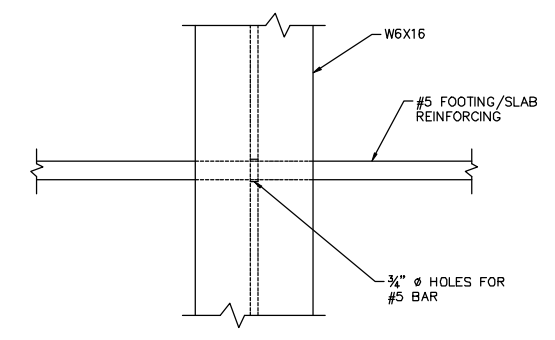
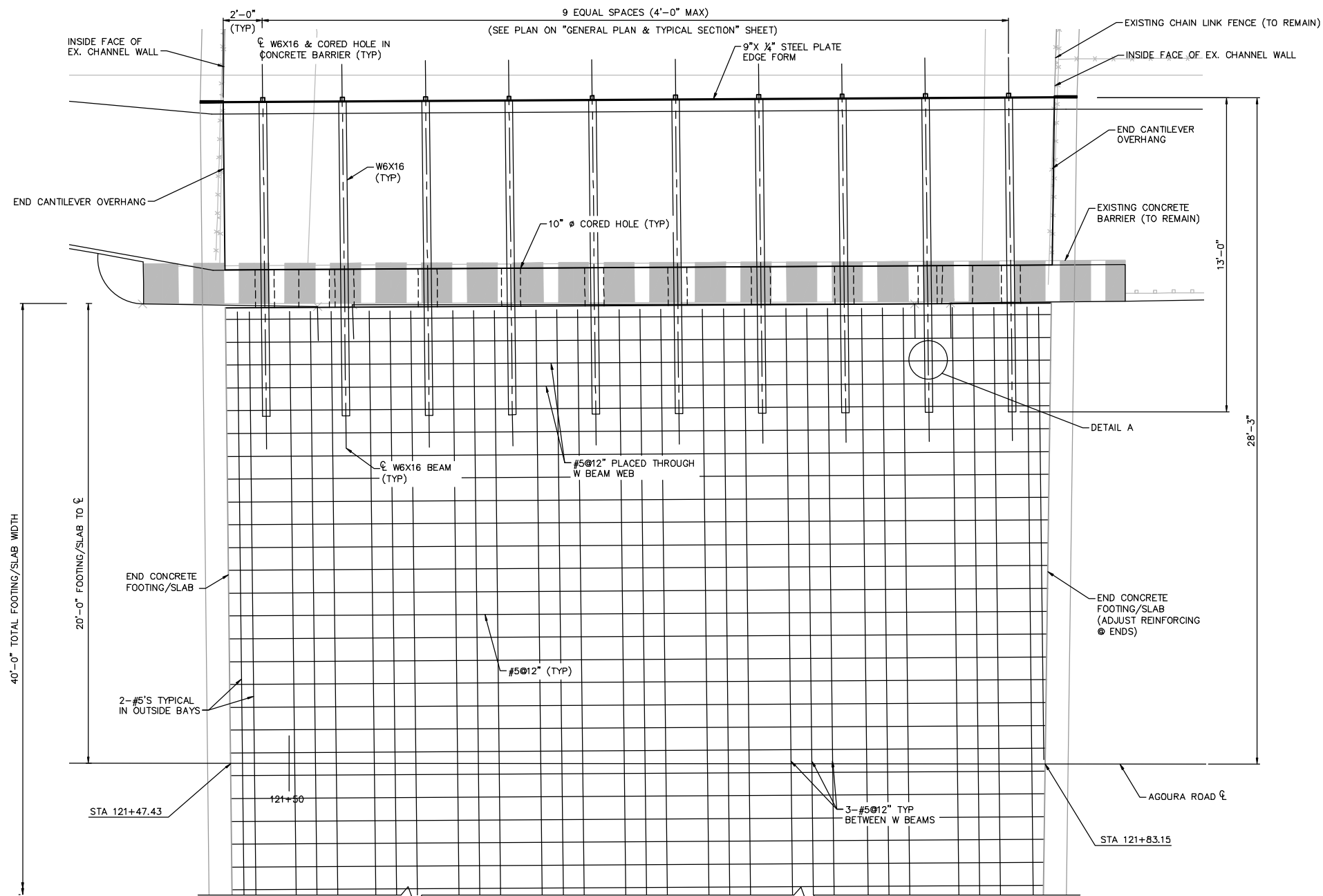
AGOURA ROAD WIDENING
BRIDGE WIDENING
REMOVAL AND CONSTRUCTION SEQUENCE

DRAWN BY: BS
CHECKED BY: KK
KHA JOB NUMBER: 099083017

SHEET 92 OF 101

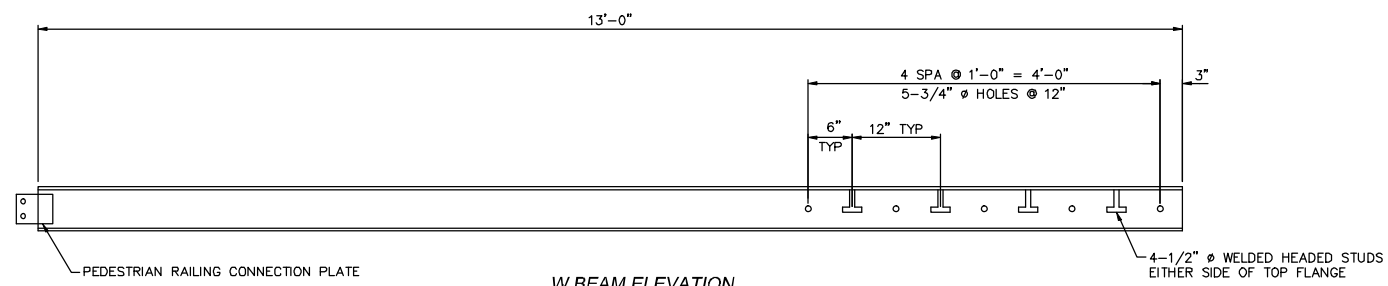
100% SUBMITTAL - OCTOBER 2012

K:\Projects\Structure\09083017-Agoura Road Widening\Drawings\09083017-01.dwg 10/08/12 8:52 AM



DETAIL A
SCALE: 4" = 1'-0"

FRAMING PLAN
SCALE: 3/8" = 1'-0"
NORTH SIDE SHOWN (SOUTH SIDE SIMILAR)



W BEAM ELEVATION
SCALE: 1" = 1'-0"

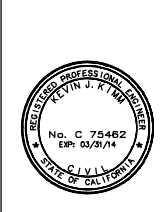
1		50%PS&E		9/9/11
2		75%PS&E		2/28/12
3		90%PS&E		6/8/12
4		100%PS&E		10/5/12
REV	SYMBOL	DESCRIPTION OF CHANGE	RCE	DATE

PREPARED BY:



© 2012 KIMLEY-HORN AND ASSOCIATES, INC.
6800 Owensmouth Avenue, Suite 410, Los Angeles CA
Tel (818) 227-2790 Fax (916) 608-0885

KEVIN KIMM R.C.E. 75462 DATE



REVIEWED BY:

CHARMAINE YAMBAO DATE
ASSOCIATE CIVIL ENGINEER

APPROVED BY:

RAMIRO ADEVA DATE
DIRECTOR OF PUBLIC WORKS/CITY ENGINEER



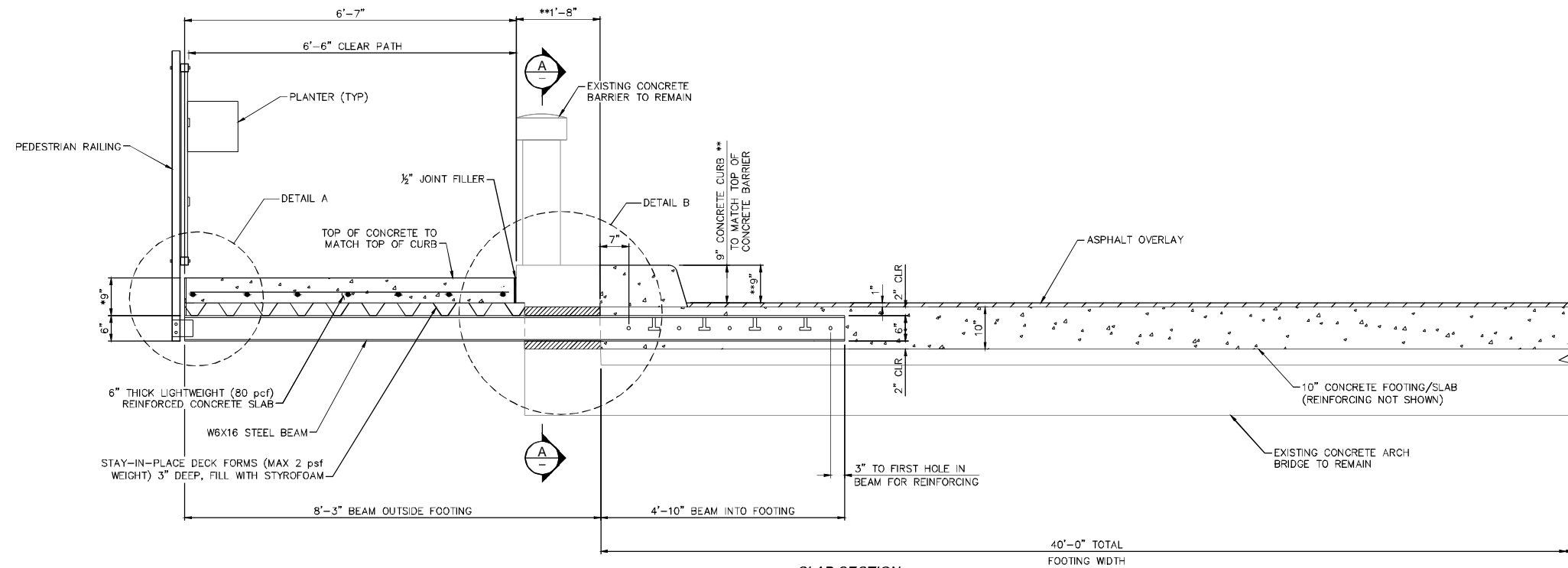
AGOURA ROAD WIDENING
BRIDGE WIDENING
FRAMING PLAN

DRAWN BY: BS
CHECKED BY: KK
KHA JOB NUMBER: 099083017

SHEET 93 OF 101

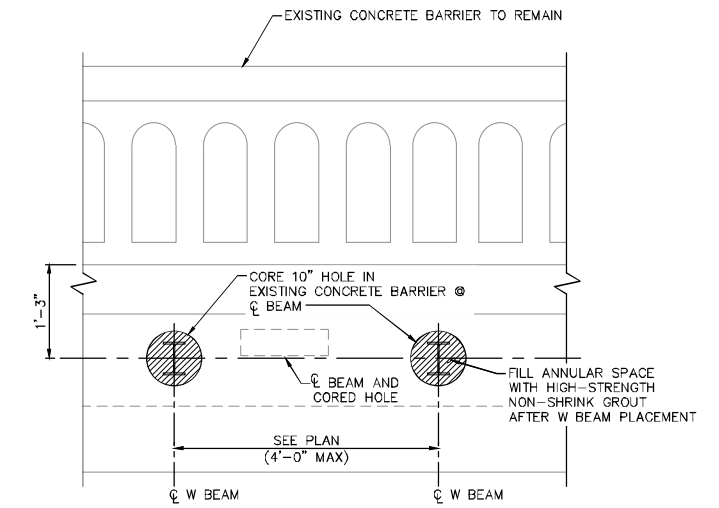
100% SUBMITTAL - OCTOBER 2012

K:\Projects\Structure\099083017-Agoura Road Widening\Drawings\099083017-Framing\099083017-Framing.dwg 10/05/12 10:43 AM

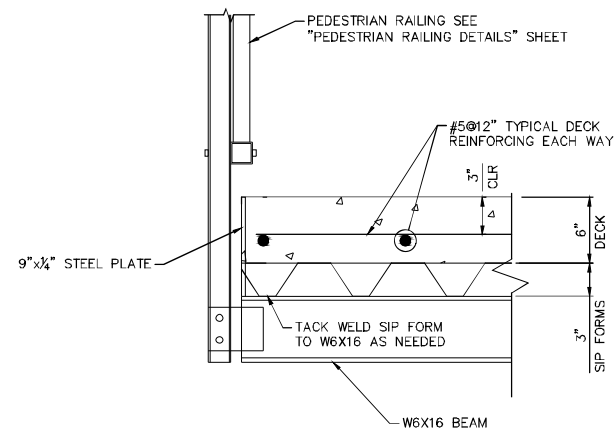


SLAB SECTION
SCALE: 3/4" = 1'-0"

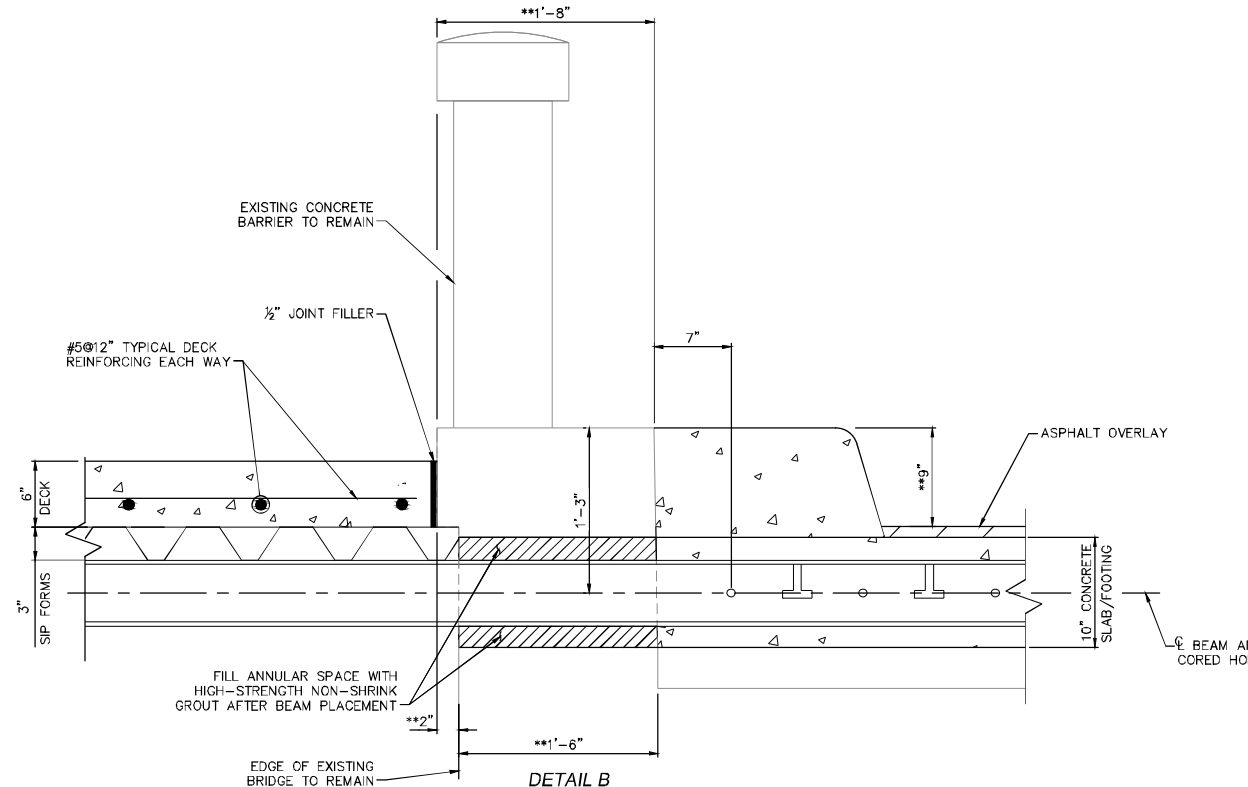
* 9" INCLUDES DECK AND STAY-IN-PLACE DECK FORM DEPTH (3")
** EXISTING CONCRETE BARRIER PER AS-BUILTS, CONTRACTOR SHALL FIELD VERIFY DIMENSIONS



SECTION A-A
SCALE: 3/4" = 1'-0"



DETAIL A
SCALE: 1 1/2" = 1'-0"



DETAIL B
SCALE: 1 1/2" = 1'-0"

1		50%PS&E		9/9/11
2		75%PS&E		2/28/12
3		90%PS&E		6/8/12
4		100%PS&E		10/5/12
REV	SYMBOL	DESCRIPTION OF CHANGE	RCE	DATE

PREPARED BY:

© 2012 KIMLEY-HORN AND ASSOCIATES, INC.
6800 Owensmouth Avenue, Suite 410, Los Angeles CA
Tel (818) 227-2790 Fax (916) 608-0885

KEVIN KIM R.C.E. 75462 DATE

REVIEWED BY:

CHARMAINE YAMBABO DATE
ASSOCIATE CIVIL ENGINEER

APPROVED BY:

RAMIRO ADEVA DATE
DIRECTOR OF PUBLIC WORKS/CITY ENGINEER

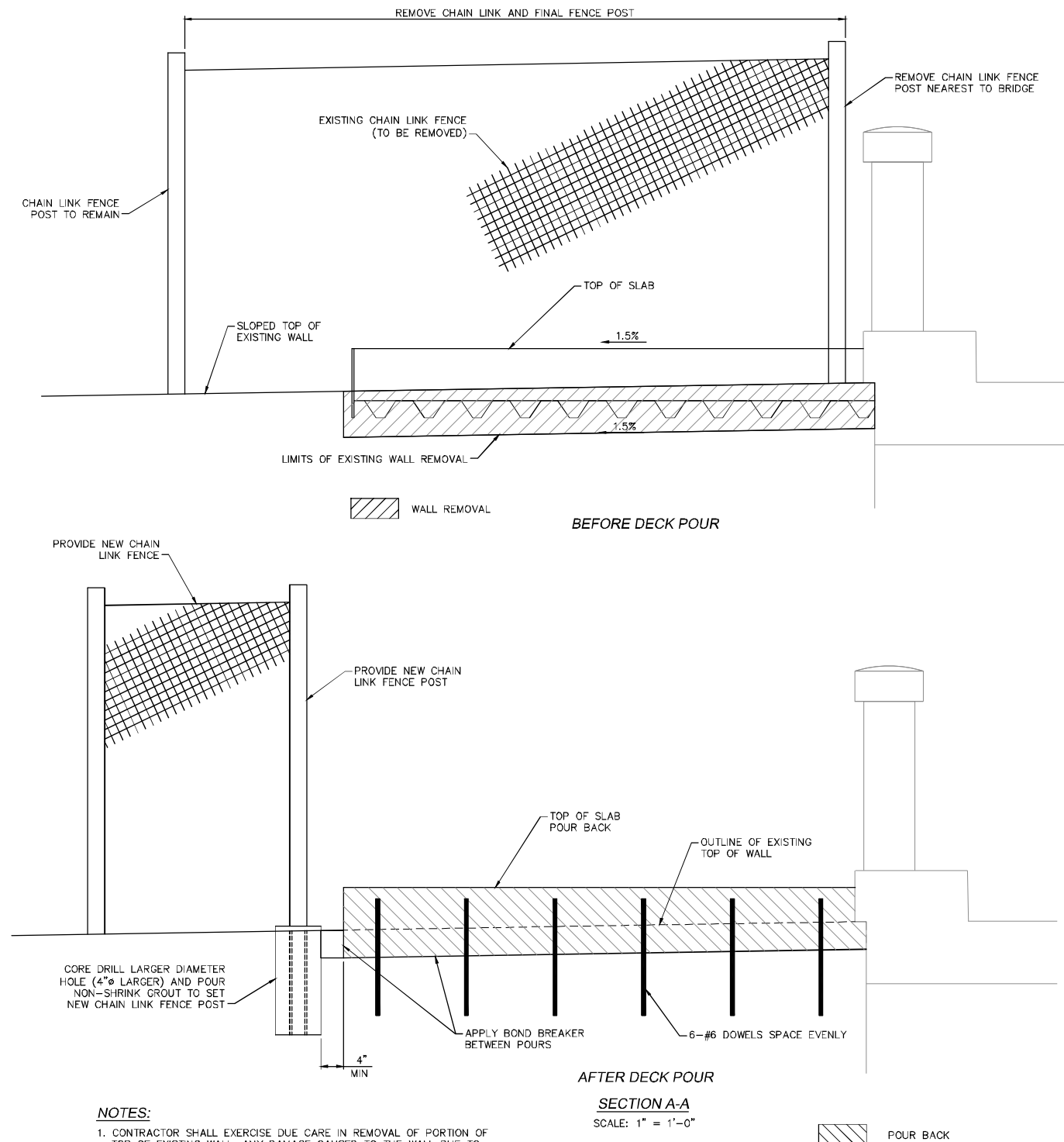
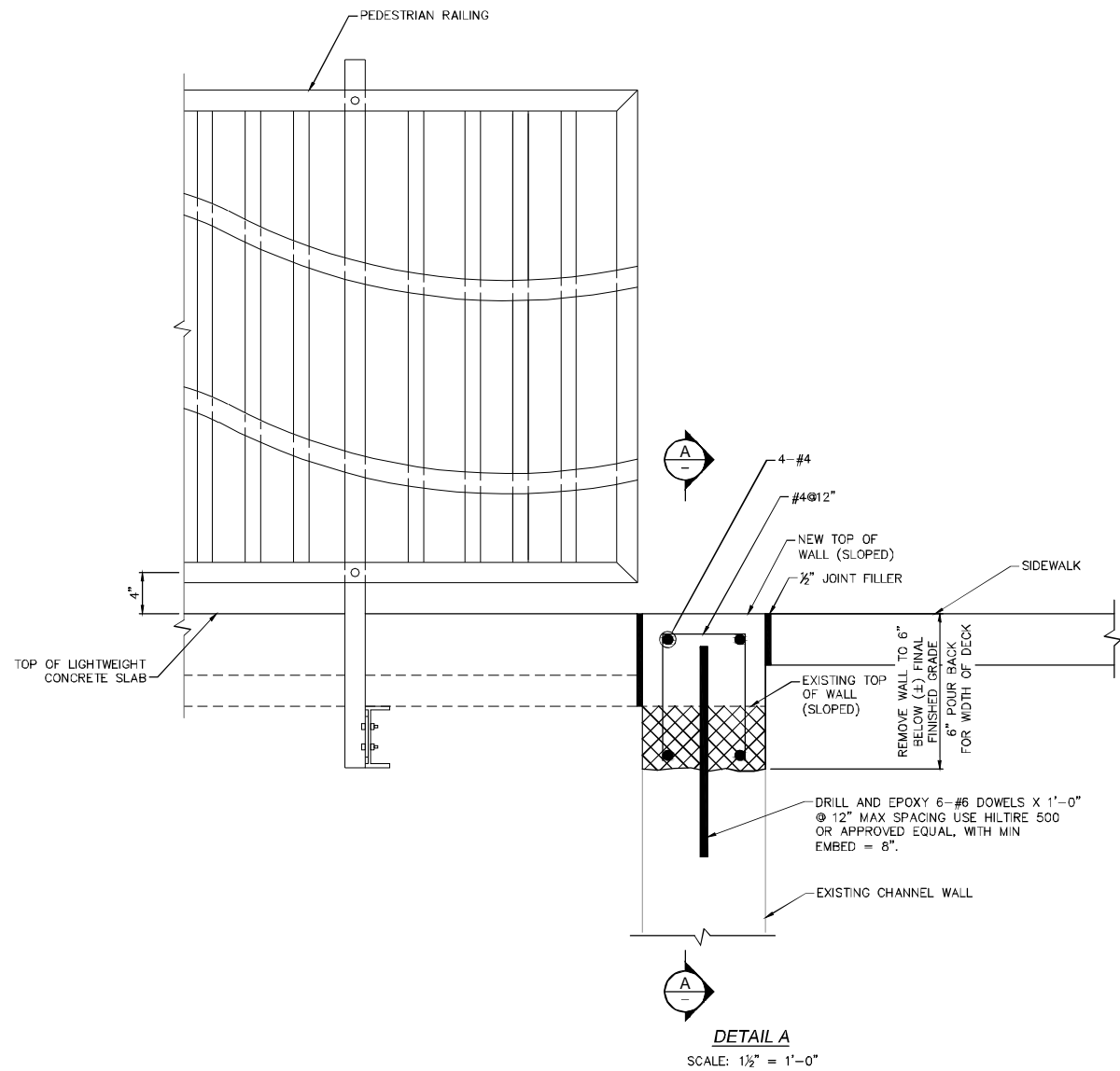
CITY OF
AGOURA HILLS

AGOURA ROAD WIDENING
BRIDGE WIDENING
TYPICAL DECK SECTIONS

DRAWN BY: BS
CHECKED BY: KK
KHA JOB NUMBER: 099083017

SHEET 94 OF 101

100% SUBMITTAL - OCTOBER 2012



NOTES:

1. CONTRACTOR SHALL EXERCISE DUE CARE IN REMOVAL OF PORTION OF TOP OF EXISTING WALL. ANY DAMAGE CAUSED TO THE WALL DUE TO THE CONTRACTORS MEANS AND METHODS SHALL BE REPAIRED AT THE CONTRACTORS EXPENSE.
2. ALL INFORMATION SHOWN HERE IS BASED ON TOPOGRAPHIC AND AS-BUILT INFORMATION AVAILABLE. CONTRACTOR SHALL VERIFY ALL INFORMATION SHOWN AND NOTIFY ENGINEER OF ANY DISCREPANCIES.

1		50%PS&E		9/9/11
2		75%PS&E		2/28/12
3		90%PS&E		6/8/12
4		100%PS&E		10/5/12
REV	SYMBOL	DESCRIPTION OF CHANGE	RCE	DATE

PREPARED BY:

© 2012 KIMLEY-HORN AND ASSOCIATES, INC.
6800 Owensmouth Avenue, Suite 410, Los Angeles CA
Tel (818) 227-2790 Fax (916) 608-0885

KEVIN KIM R.C.E. 75462 DATE

REVIEWED BY:

CHARMAINE YAMBAO DATE
ASSOCIATE CIVIL ENGINEER

APPROVED BY:

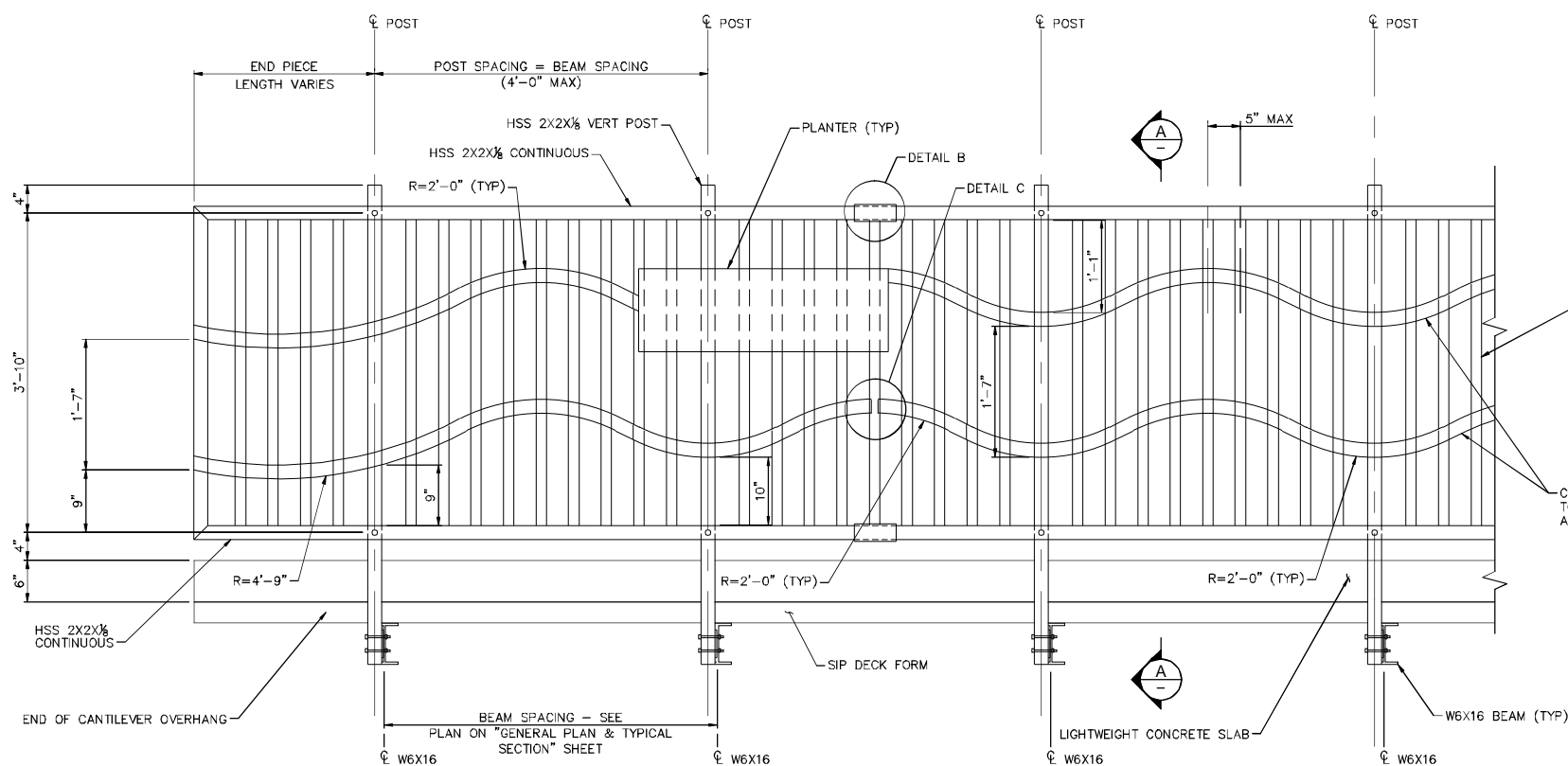
RAMIRO ADEVA DATE
DIRECTOR OF PUBLIC WORKS/CITY ENGINEER

AGOURA ROAD WIDENING
BRIDGE WIDENING
END OF BRIDGE DETAILS

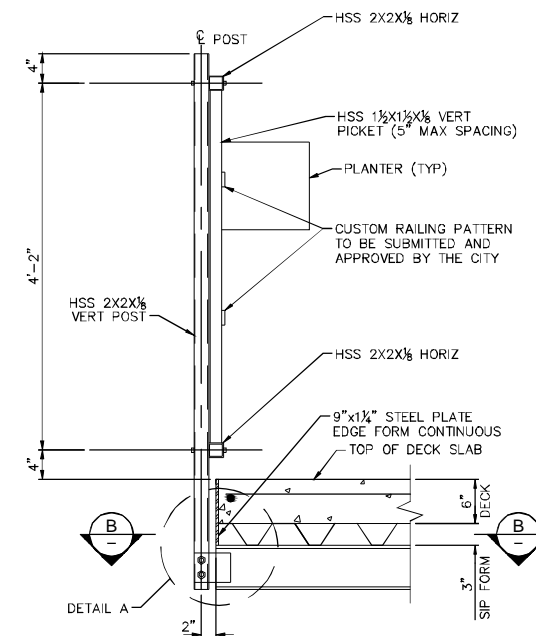
DRAWN BY: BS
CHECKED BY: KK
KHA JOB NUMBER: 099083017

SHEET 95 OF 101

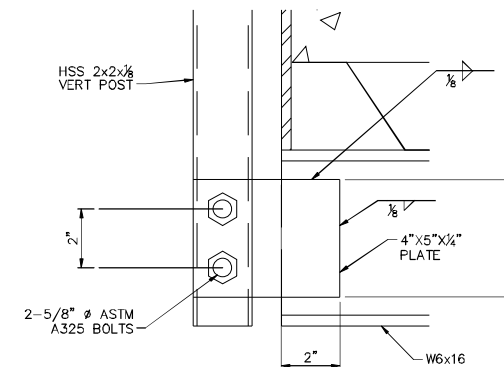
100% SUBMITTAL - OCTOBER 2012



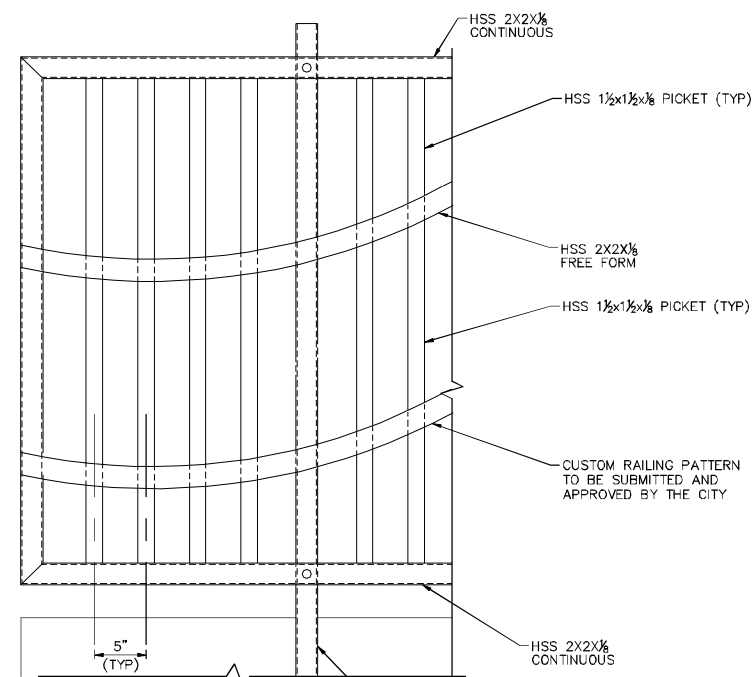
PEDESTRIAN RAILING ELEVATION
 SCALE: 1" = 1'-0"



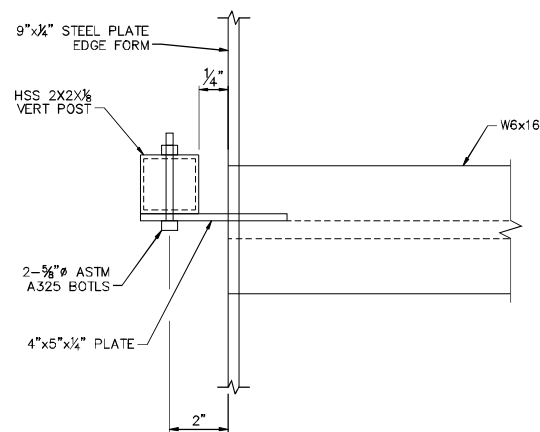
SECTION A-A
 SCALE: 1" = 1'-0"



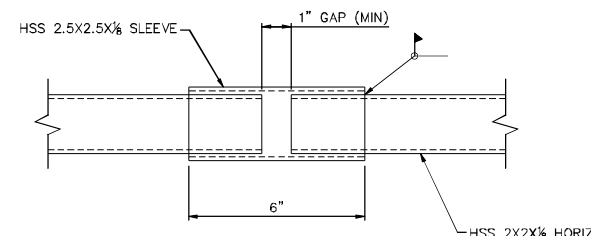
DETAIL A
 SCALE: 4" = 1'-0"



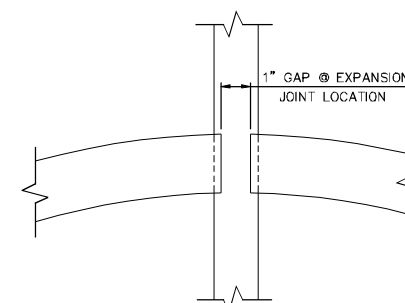
END SPLICE DETAIL
 SCALE: 1½" = 1'-0"



SECTION B-B
 SCALE: 4" = 1'-0"



DETAIL B
 SCALE: 4" = 1'-0"



DETAIL B
 SCALE: 4" = 1'-0"

NOTES:

1. PEDESTRIAN RAILING SHALL BE FINISHED IN ACCORDANCE WITH PROJECT SPECIFICATIONS. CONTRACTOR SHALL SUBMIT SHOP DRAWINGS FOR PEDESTRIAN RAILING TO THE CITY FOR APPROVAL PRIOR TO FABRICATION.
2. ALL FINISHES THAT HAVE BEEN DAMAGED IN HANDLING, TRANSPORTING, OR WELDING SHALL BE REPAIRED BY THE CONTRACTOR IN ACCORDANCE WITH THE STANDARD SPECIFICATIONS.
3. ALL EXPOSED EDGES SHALL BE SMOOTH.
4. ALL BOLT HEADS SHALL BE TO THE INSIDE.
5. CONTRACTOR SHALL VERIFY END LENGTH IN THE FIELD AND FABRICATE ACCORDINGLY.
6. ONLY WELDS THAT ARE SHOWN AS FIELD WELDS SHALL BE WELDED IN THE FIELD.

1		50%PS&E		9/9/11
2		75%PS&E		2/28/12
3		90%PS&E		6/8/12
4		100%PS&E		10/5/12
REV	SYMBOL	DESCRIPTION OF CHANGE	RCE	DATE

PREPARED BY:



© 2012 KIMLEY-HORN AND ASSOCIATES, INC.
 6800 Owensmouth Avenue, Suite 410, Los Angeles CA
 Tel (818) 227-2790 Fax (916) 608-0885

KEVIN KIM R.C.E. 75462 DATE



REVIEWED BY:

CHARMAINE YAMBAO DATE
 ASSOCIATE CIVIL ENGINEER

APPROVED BY:

RAMIRO ADEVA DATE
 DIRECTOR OF PUBLIC WORKS/CITY ENGINEER



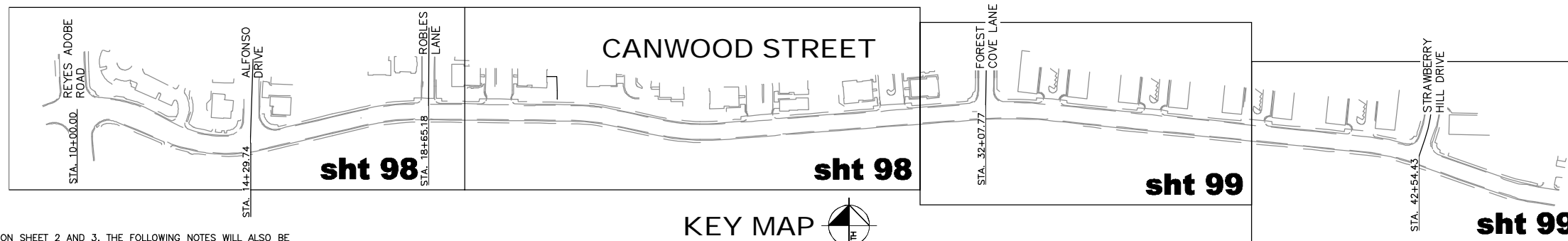
AGOURA ROAD WIDENING
 BRIDGE WIDENING
 PEDESTRIAN RAILING DETAILS

DRAWN BY: BS
 CHECKED BY: KK
 KHA JOB NUMBER: 099083017

SHEET 96 OF 101

100% SUBMITTAL - OCTOBER 2012

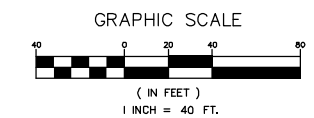
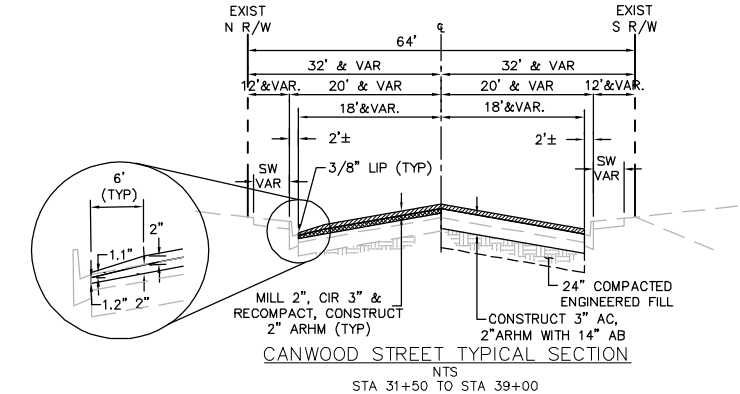
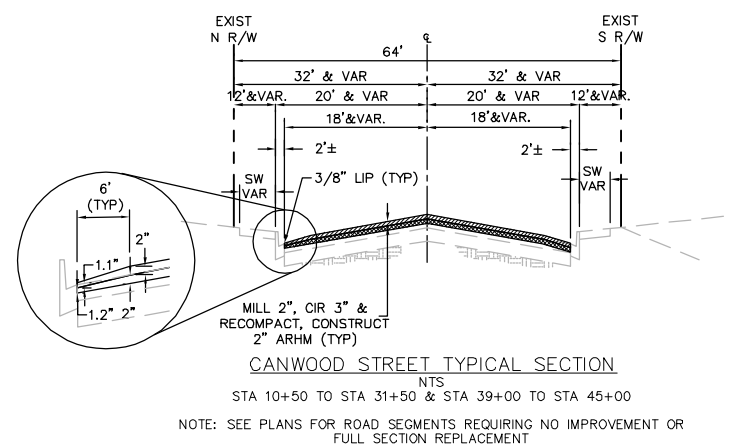
CANWOOD STREET IMPROVEMENTS FROM REYES ADOBE ROAD TO 245' EAST OF STRAWBERRY HILL DRIVE



GENERAL NOTES

IN ADDITION TO THE PROJECT NOTES ON SHEET 2 AND 3, THE FOLLOWING NOTES WILL ALSO BE APPLICABLE TO AGOURA ROAD AND CANWOOD STREET IMPROVEMENTS:

1. THE TYPES, LOCATIONS, SIZES AND/OR DEPTHS OF EXISTING UNDERGROUND UTILITIES AS SHOWN ON THESE IMPROVEMENT PLANS WERE OBTAINED FROM SOURCES OF VARYING RELIABILITY. THE CONTRACTOR IS CAUTIONED THAT ONLY ACTUAL EXCAVATION WILL REVEAL THE TYPES, EXTENT, SIZES, LOCATIONS AND DEPTHS OF SUCH UNDERGROUND UTILITIES. THE CONTRACTOR IS RESPONSIBLE FOR THE PROTECTION OF ALL EXISTING FACILITIES EITHER SHOWN OR NOT ON THE IMPROVEMENTS PLAN.
2. THE CONTRACTOR IS HEREBY NOTIFIED THAT PRIOR TO COMMENCING CONSTRUCTION, HE/SHE IS RESPONSIBLE FOR CONTACTING THE UTILITY COMPANIES/AGENCIES INVOLVED AND REQUESTING A VERIFICATION AT THE CONSTRUCTION SITE OF THE LOCATION OF THEIR UNDERGROUND UTILITIES WHERE SUCH FACILITIES MAY POSSIBLY CONFLICT WITH PLACEMENT OF IMPROVEMENTS AS SHOWN ON THESE IMPROVEMENTS PLANS. THE CONTRACTOR OR ANY SUBCONTRACTOR FOR THIS CONTRACT WILL BE REQUIRED TO NOTIFY MEMBERS OF UNDERGROUND SERVICE ALERT (USA) 48 HOURS IN ADVANCE OF ANY EXCAVATION OR PERFORMING OF WORK, BY CALLING 811. CONTRACTOR SHALL MAINTAIN THE USA NOTIFICATION AS CURRENT THROUGHOUT THE LENGTH OF THE CONTRACT. COPIES OF ALL USA TICKETS SHALL BE GIVEN TO THE CITY INSPECTOR.
3. CONTRACTOR SHALL BE RESPONSIBLE FOR ANY MONUMENTATION AND/OR BENCHMARKS WHICH ARE DISTURBED BY CONSTRUCTION. A LAND SURVEYOR MUST LOCATE SUCH POINTS. SUCH POINTS SHALL BE REFERENCED AND REPLACED WITH APPROPRIATE MONUMENTATION BY A LICENSED SURVEYOR OR A REGISTERED CIVIL ENGINEER AUTHORIZED TO PRACTICE LAND SURVEYING. A CORNER RECORD OR A RECORD OF SURVEY AS APPROPRIATE SHALL BE FILED BY THE LICENSED LAND SURVEYOR. IF ANY VERTICAL CONTROL IS TO BE DISTURBED OR DESTROYED, THE CONTRACTOR WILL BE RESPONSIBLE FOR THE COST OF REPLACING ANY VERTICAL CONTROL BENCHMARKS DESTROYED BY THE CONTRACTOR. IT IS THE CONTRACTOR'S RESPONSIBILITY TO TIE OUT ANY EXISTING STREET MONUMENTATION EITHER VISIBLE OR BURIED, PRIOR TO CONSTRUCTION.
4. CONTRACTOR SHALL VERIFY EXACT LOCATION AND ELEVATION OF ALL EXISTING FACILITIES PRIOR TO CONSTRUCTION. THE CONTRACTOR SHALL, IF NECESSARY, FIELD SURVEY THE ELEVATION AND LOCATION OF UTILITIES, INCLUDING CONNECTIONS, AND PROVIDE THE INFORMATION TO THE CITY INSPECTOR A MINIMUM OF TEN (10) WORKING DAYS PRIOR TO PIPE FABRICATION (IF ANY), OR CONSTRUCTION TO PERMIT POTENTIAL DESIGN ADJUSTMENT OR REVISIONS IN THE EVENT OF A CONFLICT.
5. CONSTRUCTION MATERIALS TESTING AND INSPECTION SHALL COMPLY WITH CITY OF AGOURA HILLS STANDARDS AND SPECIFICATIONS AND SHALL MEET OR EXCEED THE REQUIREMENT OF LOS ANGELES COUNTY, THE STANDARD SPECIFICATIONS FOR PUBLIC WORKS CONSTRUCTION ("GREEN BOOK") AND, THE AMERICAN SOCIETY FOR TESTING AND MATERIALS (A.S.T.M.) STANDARDS. FAILURE TO MEET ANY OF THE ABOVE REQUIREMENTS WILL BE CAUSE FOR REJECTION.
6. IT SHALL BE THE RESPONSIBILITY OF THE CONTRACTOR TO APPLY FOR ANY NECESSARY ENCROACHMENT PERMIT FROM ANY GOVERNING AGENCY. APPROVAL BY THE CITY OF AGOURA HILLS IMPLIES NO PERMISSION OTHER THAN WITHIN THE CITY'S JURISDICTION.
7. SURPLUS AND ALL MATERIALS REMOVED WHICH IS NOT SUITABLE FOR USE IN THE PROJECT SHALL BECOME THE PROPERTY OF THE CONTRACTOR AND SHALL BE DISPOSED OF OFFSITE, CONFORMING TO ALL LOCAL, STATE, AND FEDERAL REGULATIONS.
8. ALL TRAFFIC STRIPING, PAVEMENT MARKINGS, TRAFFIC SIGNAL CONDUITS/LOOPS SHALL BE REPLACED IN KIND IF DAMAGED AS RESULT OF CONSTRUCTION OPERATION AND/OR TO THE SATISFACTION OF THE CITY ENGINEER. NO PARTIAL STRIPING OR MARKINGS ARE ALLOWED.
9. THE CONTRACTOR SHALL KEEP A COMPLETE RECORD OF ANY CONSTRUCTION CHANGES AND SHALL MAKE INFORMATION AVAILABLE TO THE PROJECT ENGINEER FOR PREPARATION OF "AS BUILT" DRAWINGS. THE "AS BUILT" DRAWINGS SHALL BE SUBMITTED TO THE CITY OF AGOURA HILLS FOR APPROVAL PRIOR TO FINAL ACCEPTANCE OF THE PROJECT.



DIAL TOLL FREE
8 1 1

Know what's below.
Call before you dig.

AT LEAST TWO DAYS
BEFORE YOU DIG

UNDERGROUND SERVICE ALERT OF SOUTHERN CALIFORNIA

REV	SYMBOL	DESCRIPTION OF CHANGE	RCE	DATE
1		50%PS&E		9/9/11
2		75%PS&E		2/28/12
3		90%PS&E		6/8/12
4		100%PS&E		10/5/12

PREPARED BY:

© 2012 KIMLEY-HORN AND ASSOCIATES, INC.
6800 Owensmouth Avenue, Suite 410, Los Angeles CA
Tel (818) 227-2790 Fax (916) 608-0885

MICHAEL CHOI R.C.E. 67851 DATE

REVIEWED BY:

CHARMAINE YAMBAO DATE
ASSOCIATE CIVIL ENGINEER

APPROVED BY:

RAMIRO ADEVA DATE
DIRECTOR OF PUBLIC WORKS/CITY ENGINEER

AGOURA ROAD WIDENING
CANWOOD STREET
PAVEMENT REPAIR PR-0

DRAWN BY: RC
CHECKED BY: JS/MC
KHA JOB NUMBER: 099083017

SHEET 97 OF 101

100% SUBMITTAL - OCTOBER 2012

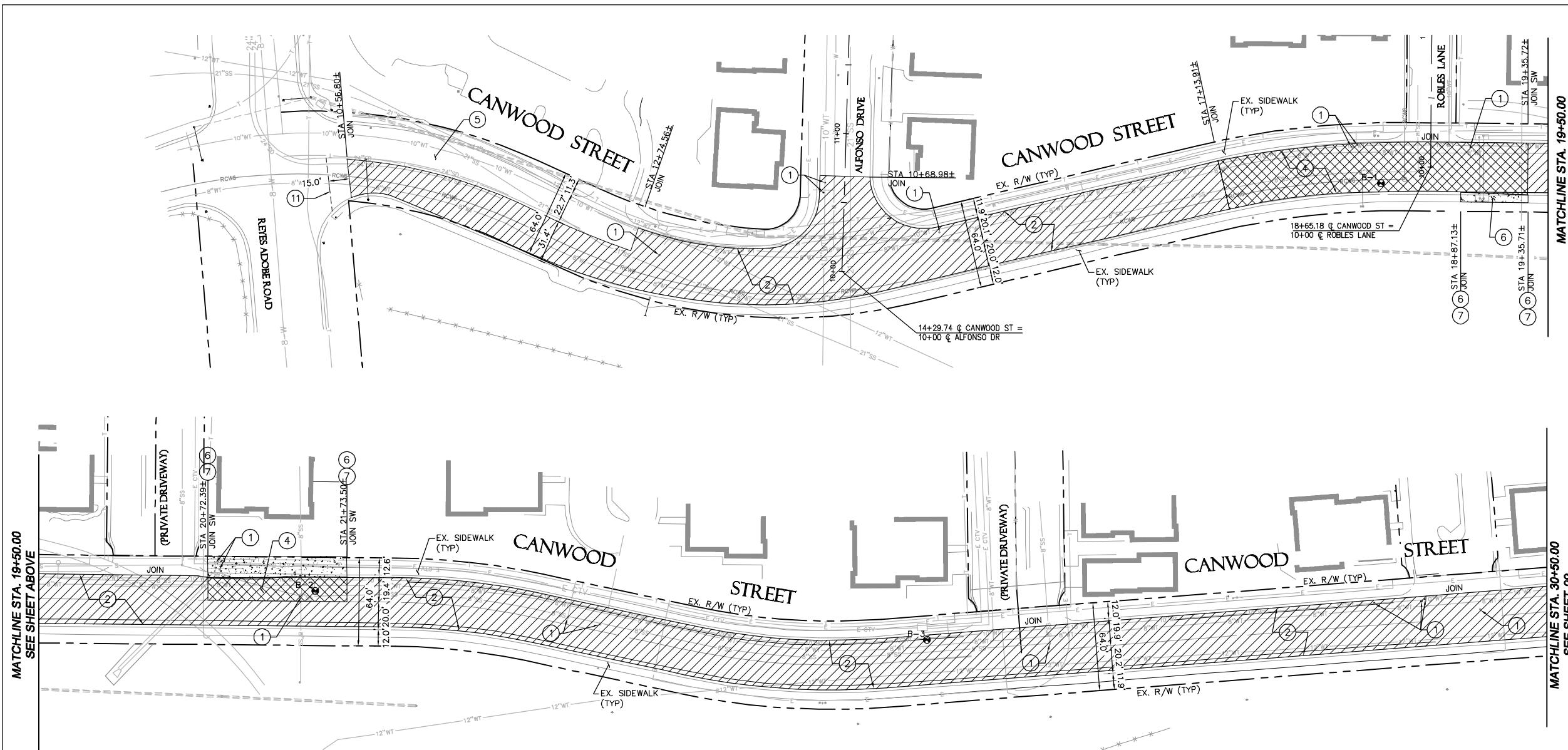
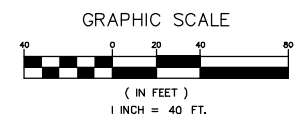
CONSTRUCTIONS NOTES

- ① ADJUST EXISTING UTILITY STRUCTURE TO GRADE.
- ② MILL AND REMOVE 2" OF EXISTING ASPHALT AND COLD IN PLACE RECYCLE (CIPR) REMAINING ASPHALT WITH EXISTING BASE. INSTALL 4" ASPHALT SURFACE COURSE PER TYPICAL SECTIONS ON PR-0.
- ③ ADJUST AND RESET TILTING STREET LIGHT.
- ④ REMOVE AND REPLACE EXISTING PAVEMENT AND BASE WITH 5" AC OVER / 4" BASE PER GEOTECHNICAL RECOMMENDATIONS.
- ⑤ EXISTING AC TO REMAIN.
- ⑥ REMOVE EXISTING SIDEWALK AND CONSTRUCT 4" PCC SIDEWALK. CONSTRUCT SIDEWALK JOINTS PER SPPWC STANDARD 112-2.
- ⑦ REMOVE EXISTING CURB AND GUTTER AND CONSTRUCT TYPE A2-6(150) CURB AND GUTTER PER SPPWC STANDARD 120-2.
- ⑧ ADJUST EXISTING CATCH BASIN TO GRADE AND RECONSTRUCT LOCAL DEPRESSION, CASE A, PER SPPWC STANDARD 313-3.
- ⑨ OVER EXCAVATE 24" BELOW PAVEMENT SECTION PER GEOTECHNICAL RECOMMENDATIONS. SEE DETAIL BELOW.
- ⑩ INSTALL 24" PILE. SEE STRUCTURAL PLAN FOR SPACING AND LAYOUT. CONTRACTOR TO CONFIRM ANY UTILITY CONFLICTS AND COORDINATE ANY REVISION TO PILE LOCATION WITH THE CITY AND THE ENGINEER PRIOR TO START OF WORK.
- ⑪ TRANSITION PAVEMENT MILL DEPTH AS SHOWN TO MATCH EXISTING CROWN. SEE LONGITUDINAL JOIN TRANSITION DETAIL ON PR-2.
- ⑫ ADJUST EXISTING STREET LIGHT PULL BOX TO GRADE. CONTRACTOR TO VERIFY NUMBER AND LOCATION PRIOR TO START OF WORK.
- ⑬ EXISTING STORM DRAIN TO BE PROTECTED IN PLACE.
- ⑭ EXISTING MANHOLE TO BE ADJUSTED TO GRADE.

LEGEND

- APPROXIMATE BORING LOCATION AND NUMBER PER GEOTECHNICAL INVESTIGATION REPORT PREPARED BY KLEINFELDER DATED APRIL 5, 2011.
- COLD IN PLACE RECYCLE (CIPR) PAVEMENT. SEE NOTE 2 ABOVE.
- FULL DEPTH PAVEMENT SECTION REPLACEMENT. SEE NOTE 4 ABOVE.
- CENTERLINE
- RIGHT OF WAY
- 8"WT-8"WT- EXISTING 8" WATER SUPPLY
- 10"WT-10"WT- EXISTING 10" WATER SUPPLY
- 12"WT-12"WT- EXISTING 12" WATER SUPPLY
- 8"W-8"W- EXISTING 8" WATER SUPPLY
- FW-FW- EXISTING FIRE WATER LINE
- RCW6-RCW6- EXISTING 6" RECLAIMED WATER LINE
- G-G- EXISTING GAS LINE
- 8"SS-8"SS- EXISTING 8" SANITARY SEWER LINE
- 21"SS-21"SS- EXISTING 21" SANITARY SEWER LINE
- 24"SD-24"SD- EXISTING 24" STORM LINE
- E-E- EXISTING ELECTRICAL CONDUIT
- T-T- EXISTING TELECOMMUNICATIONS LINE
- ECTV-ECTV- EXISTING CAT 5 TELECOMMUNICATIONS LINE

- NOTE:**
1. CONTRACTOR TO VERIFY LOCATIONS AND ADJUST EXISTING UTILITIES TO GRADE WITHIN LIMIT OF WORK.
 2. CONTRACTOR TO VERIFY LIMIT OF 0" BASE NEAR BORING B-1 AND ADJUST REMOVAL LIMIT FOR FULL PAVEMENT SECTION IN COORDINATION WITH GEOTECHNICAL ENGINEER.
 3. LIMITS OF MISCELLANEOUS PCC IMPROVEMENTS (SW, C&G) IDENTIFIED BY AREAS AND/OR LENGTHS ARE APPROXIMATE AND SHALL BE FIELD LOCATED BY THE CONTRACTOR IN COORDINATION WITH THE CITY AND THE ENGINEER PRIOR TO CONSTRUCTION.
 4. ALL EXISTING TREES SHALL BE PROTECTED, UNLESS OTHERWISE NOTED OR DIRECTED BY THE CITY.



EXISTING PAVEMENT SECTIONS

BORING	AC THICKNESS (INCHES)	AGGREGATE BASE THICKNESS (INCHES)
B-1	4.0	NO AGGREGATE BASE
B-2	6.0	6.0
B-3	4.5	5.0
B-4	3.0	18.0
B-5	4.0	16.0
B-6	4.0	16.0
B-7	4.0	16.0
B-8	4.0	16.0

NOTE: PAVEMENT SECTIONS AND BORINGS BASED ON GEOTECHNICAL REPORT PREPARED BY KLEINFELDER WEST, INC. DATED APRIL 5, 2011.



811
DIAL TOLL FREE
811
Know what's below.
Call before you dig.
AT LEAST TWO DAYS
BEFORE YOU DIG
UNDERGROUND SERVICE ALERT OF SOUTHERN CALIFORNIA

REV	SYMBOL	DESCRIPTION OF CHANGE	RCE	DATE
1		50%PS&E		9/9/11
2		75%PS&E		2/28/12
3		90%PS&E		6/8/12
4		100%PS&E		10/5/12

PREPARED BY:

© 2012 KIMLEY-HORN AND ASSOCIATES, INC.
6800 Owensmouth Avenue, Suite 410, Los Angeles CA
Tel (818) 227-2790 Fax (916) 608-0885

MICHAEL CHOI R.C.E. 67851 DATE

REVIEWED BY:

CHARMAINE YAMBAO DATE
ASSOCIATE CIVIL ENGINEER

APPROVED BY:

RAMIRO ADEVA DATE
DIRECTOR OF PUBLIC WORKS/CITY ENGINEER

AGOURA ROAD WIDENING
CANWOOD STREET
PAVEMENT REPAIR PR-1

DRAWN BY: RC
CHECKED BY: JS/MC
KHA JOB NUMBER: 099083017
SHEET 98 OF 101

100% SUBMITTAL - OCTOBER 2012

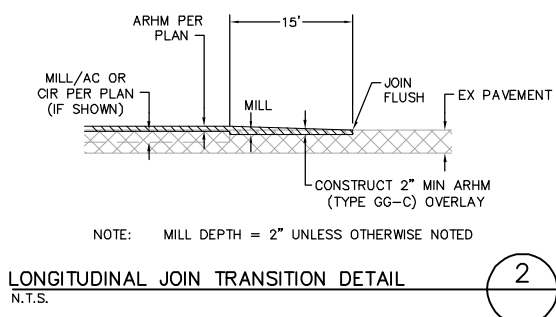
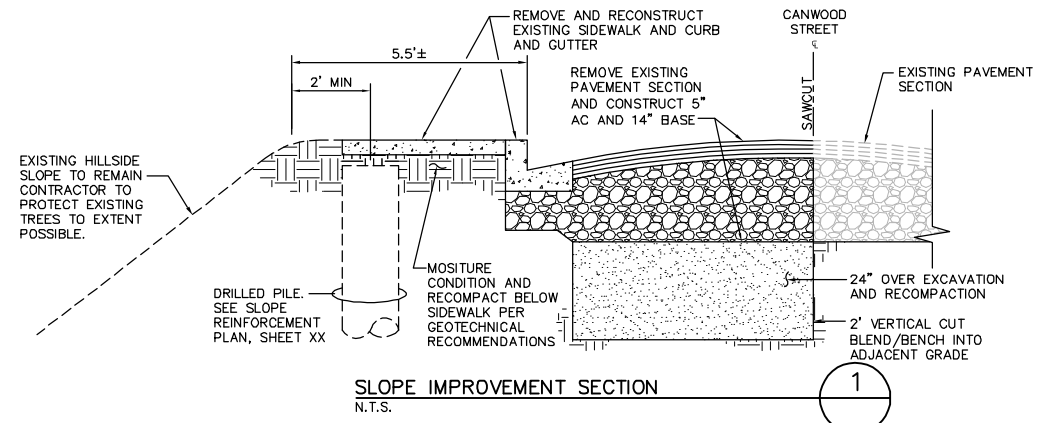
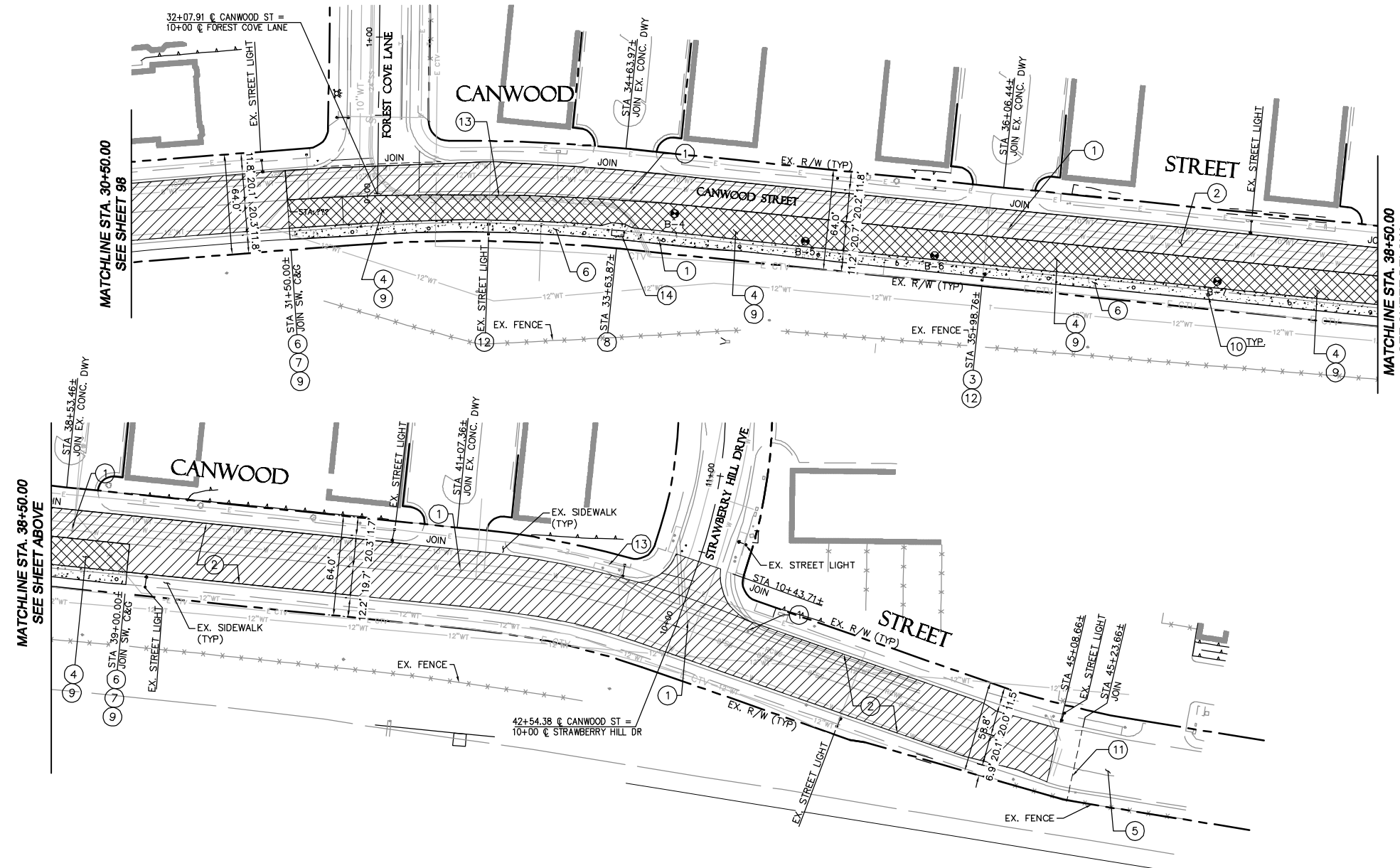
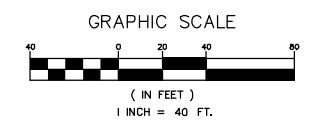
CONSTRUCTIONS NOTES

- ① ADJUST EXISTING UTILITY STRUCTURE TO GRADE.
- ② MILL AND REMOVE 2" OF EXISTING ASPHALT AND COLD IN PLACE RECYCLE (CIPR) REMAINING ASPHALT WITH EXISTING BASE. INSTALL 4" ASPHALT SURFACE COURSE PER TYPICAL SECTIONS ON PR-0.
- ③ ADJUST AND RESET TILTING STREET LIGHT.
- ④ REMOVE AND REPLACE EXISTING PAVEMENT AND BASE WITH 5" AC OVER / 4" BASE PER GEOTECHNICAL RECOMMENDATIONS.
- ⑤ EXISTING AC TO REMAIN.
- ⑥ REMOVE EXISTING SIDEWALK AND CONSTRUCT 4" PCC SIDEWALK. CONSTRUCT SIDEWALK JOINTS PER SPPWC STANDARD 112-2.
- ⑦ REMOVE EXISTING CURB AND GUTTER AND CONSTRUCT TYPE A2-6(150) CURB AND GUTTER PER SPPWC STANDARD 120-2.
- ⑧ ADJUST EXISTING CATCH BASIN TO GRADE AND RECONSTRUCT LOCAL DEPRESSION, CASE A, PER SPPWC STANDARD 313-3.
- ⑨ OVER EXCAVATE 24" BELOW PAVEMENT SECTION PER GEOTECHNICAL RECOMMENDATIONS. SEE DETAIL BELOW.
- ⑩ INSTALL 24" PILE. SEE DWG. PR-3 FOR SPACING AND LAYOUT. CONTRACTOR TO CONFIRM ANY UTILITY CONFLICTS AND COORDINATE ANY REVISION TO PILE LOCATION WITH THE CITY AND THE ENGINEER PRIOR TO START OF WORK.
- ⑪ TRANSITION PAVEMENT MILL DEPTH AS SHOWN TO MATCH EXISTING CROWN. SEE LONGITUDINAL JOIN TRANSITION DETAIL ON PR-2.
- ⑫ ADJUST EXISTING STREET LIGHT PULL BOX TO GRADE. CONTRACTOR TO VERIFY NUMBER AND LOCATION PRIOR TO START OF WORK.
- ⑬ EXISTING STORM DRAIN TO BE PROTECTED IN PLACE.
- ⑭ EXISTING MANHOLE TO BE ADJUSTED TO GRADE.

LEGEND

- APPROXIMATE BORING LOCATION AND NUMBER PER GEOTECHNICAL INVESTIGATION REPORT PREPARED BY KLEINFELDER DATED APRIL 5, 2011.
- COLD IN PLACE RECYCLE (CIPR) PAVEMENT. SEE NOTE 2 ABOVE.
- FULL DEPTH PAVEMENT SECTION REPLACEMENT. SEE NOTE 4 ABOVE.
- CENTERLINE
- RIGHT OF WAY
- EXISTING 8" WATER SUPPLY
- EXISTING 10" WATER SUPPLY
- EXISTING 12" WATER SUPPLY
- EXISTING 8" WATER SUPPLY
- EXISTING FIRE WATER LINE
- EXISTING 6" RECLAIMED WATER LINE
- EXISTING GAS LINE
- EXISTING 8" SANITARY SEWER LINE
- EXISTING 21" SANITARY SEWER LINE
- EXISTING 24" STORM LINE
- EXISTING ELECTRICAL CONDUIT
- EXISTING TELECOMMUNICATIONS LINE
- EXISTING CAT 5 TELECOMMUNICATIONS LINE

- NOTE:**
1. CONTRACTOR TO VERIFY LOCATIONS AND ADJUST EXISTING UTILITIES TO GRADE WITHIN LIMIT OF WORK.
 2. CONTRACTOR TO VERIFY LIMIT OF 0" BASE NEAR BORING B-1 AND ADJUST REMOVAL LIMIT FOR FULL PAVEMENT SECTION IN COORDINATION WITH GEOTECHNICAL ENGINEER.
 3. LIMITS OF MISCELLANEOUS PCC IMPROVEMENTS (SW, C&G) IDENTIFIED BY AREAS AND/OR LENGTHS ARE APPROXIMATE AND SHALL BE FIELD LOCATED BY THE CONTRACTOR IN COORDINATION WITH THE CITY AND THE ENGINEER PRIOR TO CONSTRUCTION.
 4. ALL EXISTING TREES SHALL BE PROTECTED, UNLESS OTHERWISE NOTED OR DIRECTED BY THE CITY.



811
DIAL TOLL FREE
811
Know what's below.
Call before you dig.
AT LEAST TWO DAYS
BEFORE YOU DIG
UNDERGROUND SERVICE ALERT OF SOUTHERN CALIFORNIA

1		50%PS&E		9/9/11
2		75%PS&E		2/28/12
3		90%PS&E		6/8/12
4		100%PS&E		10/5/12
REV	SYMBOL	DESCRIPTION OF CHANGE	RCE	DATE

PREPARED BY:

© 2012 KIMLEY-HORN AND ASSOCIATES, INC.
6800 Owensmouth Avenue, Suite 410, Los Angeles CA
Tel (818) 227-2790 Fax (916) 608-0885

MICHAEL CHOI R.C.E. 67851 DATE

REVIEWED BY:

CHARMAINE YAMBAO DATE
ASSOCIATE CIVIL ENGINEER

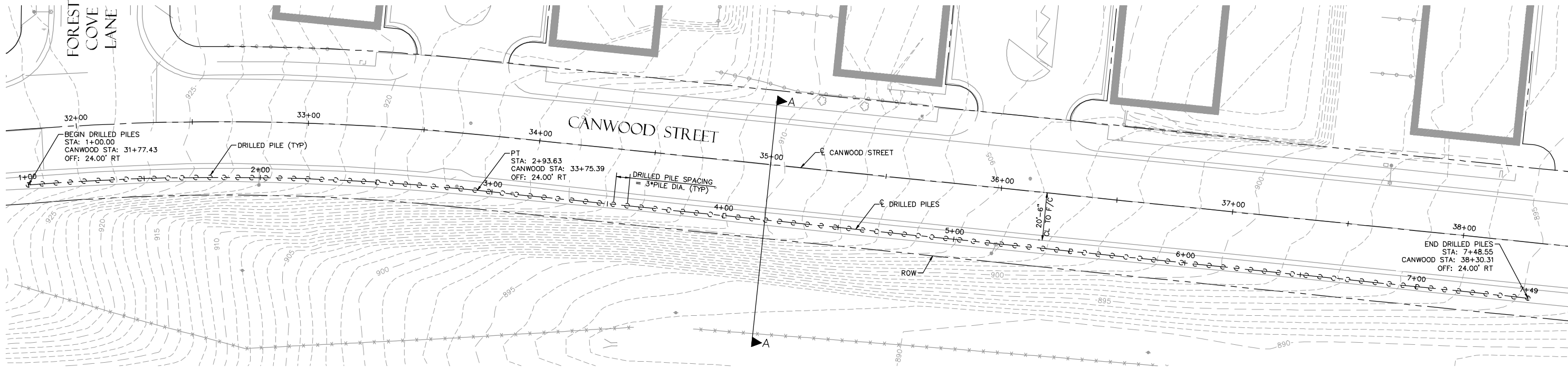
APPROVED BY:

RAMIRO ADEVA DATE
DIRECTOR OF PUBLIC WORKS/CITY ENGINEER

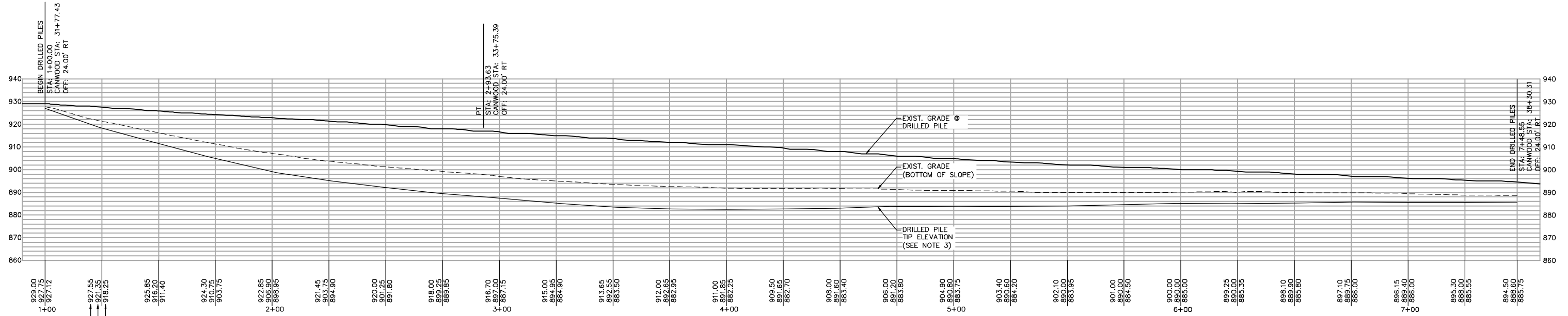
AGOURA ROAD WIDENING
CANWOOD STREET
PAVEMENT REPAIR PR-2

DRAWN BY: RC
CHECKED BY: JS/MC
KHA JOB NUMBER: 099083017
SHEET 99 OF 101

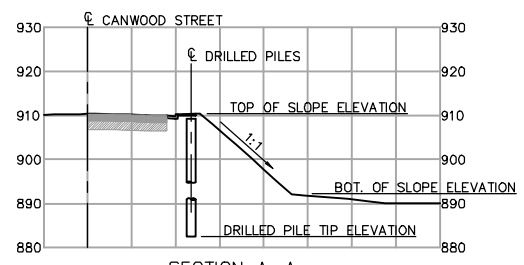
100% SUBMITTAL - OCTOBER 2012



SLOPE REINFORCEMENT PLAN



SLOPE REINFORCEMENT ELEVATION

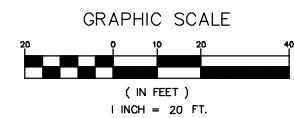


SECTION A-A
1"=20' HORIZONTAL
1"=1' VERTICAL

GENERAL NOTES:

- 1) FOR GENERAL STRUCTURAL NOTES SEE SHEET 94.
- 2) FOR DRILLED PILE TYPICAL SECTION AND DETAILS SEE SHEET 104.
- 3) DRILLED PILE TIP ELEVATION LINE REPRESENTS THE MINIMUM EMBEDMENT REQUIRED FOR PILES.

NOTE:
1. CONTRACTOR TO VERIFY LOCATIONS AND ADJUST EXISTING UTILITIES TO GRADE WITHIN LIMIT OF WORK.
2. CONTRACTOR TO VERIFY LIMIT OF 0" BASE NEAR BORING B-1 AND ADJUST REMOVAL LIMIT FOR FULL PAVEMENT SECTION.



DIAL TOLL FREE
811

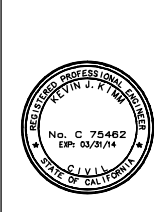
Know what's below.
Call before you dig.
AT LEAST TWO DAYS BEFORE YOU DIG
UNDERGROUND SERVICE ALERT OF SOUTHERN CALIFORNIA

REV	SYMBOL	DESCRIPTION OF CHANGE	RCE	DATE
1		50%PS&E		9/9/11
2		75%PS&E		2/28/12
3		90%PS&E		6/8/12
4		100%PS&E		10/5/12

PREPARED BY:

© 2012 KIMLEY-HORN AND ASSOCIATES, INC.
6800 Owensmouth Avenue, Suite 410, Los Angeles CA
Tel (818) 227-2790 Fax (916) 608-0885

KEVIN KIM R.C.E. 75462 DATE



REVIEWED BY:

CHARMAINE YAMBAO DATE
ASSOCIATE CIVIL ENGINEER

APPROVED BY:

RAMIRO ADEVA DATE
DIRECTOR OF PUBLIC WORKS/CITY ENGINEER

AGOURA ROAD WIDENING
CANWOOD STREET
SLOPE REINFORCEMENT PLAN AND ELEVATION
PR-3

DRAWN BY: BS
CHECKED BY: KK
KHA JOB NUMBER: 099083017

SHEET 100 OF 101

100% SUBMITTAL - OCTOBER 2012

GENERAL STRUCTURAL NOTES:

DESIGN: DRAFT - GEOTECHNICAL INVESTIGATION REPORT CANWOOD STREET REHABILITATION, CITY OF AGOURA HILLS, CALIFORNIA, DATED APRIL 5, 2011; PREPARED BY KLEINFELDER. PROJECT NO. 113541

SOIL PARAMETERS: (FOR DETERMINATION OF SHEAR STRENGTH)
 ACTIVE EARTH PRESSURE = 36 PCF
 COHESION = 245 PSF
 FRICTION ANGLE = 21°

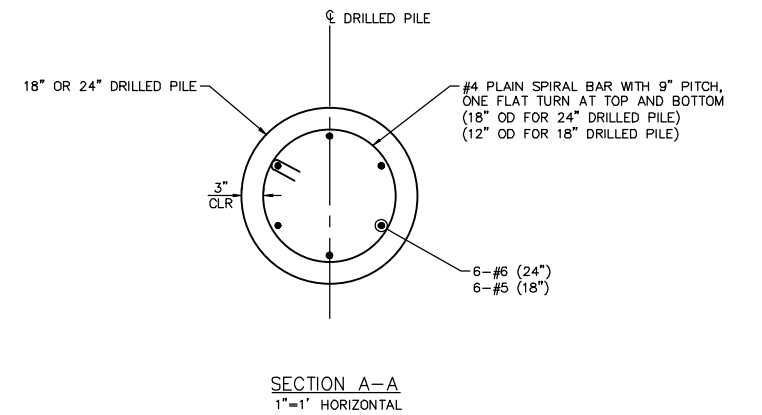
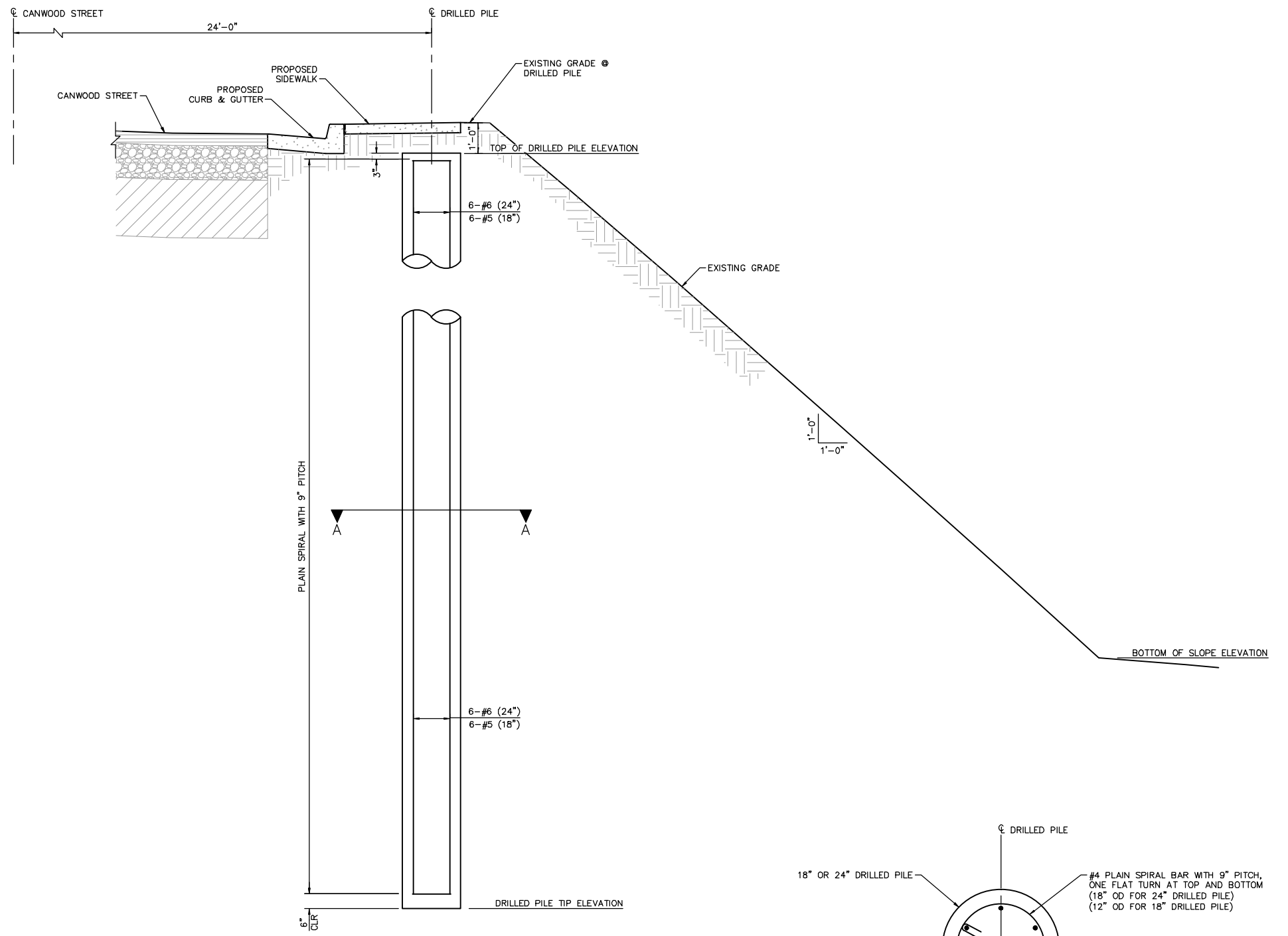
LOADING: 120 PSF (SURCHARGE)

REINFORCED CONCRETE: $F_y = 60$ KSI (YIELD STRENGTH OF REINFORCEMENT)
 $F'_c = 2500$ PSI
 TYPE V PORTLAND CEMENT CONCRETE
 MAXIMUM WATER-CEMENT RATIO OF 0.60

DRILLED PILES: (INSTALLATION NOTES)
 DRILLED PILES SHALL BE INSTALLED TO DEPTHS OF AT LEAST 1.5 TIMES THE SLOPE HEIGHT, OR TO THE LIMITS SHOWN ON THE CONSTRUCTION PLANS, AND SHALL BE SPACED AT A MAXIMUM 3 PILE DIAMETERS ON CENTER.

DRILLED PILE DIAMETERS SHALL BE 18 INCHES OR 24 INCHES.

THE TOP OF THE DRILLED PILES SHALL BE TERMINATED APPROXIMATELY 1 FOOT BELOW FINISHED GRADE AS SHOWN ON CONSTRUCTION PLANS.



DIAL TOLL FREE
811

Know what's below. **AT LEAST TWO DAYS BEFORE YOU DIG.**
 Call before you dig. UNDERGROUND SERVICE ALERT OF SOUTHERN CALIFORNIA

1		50%PS&E		9/9/11
2		75%PS&E		2/28/12
3		90%PS&E		6/8/12
4		100%PS&E		10/5/12
REV	SYMBOL	DESCRIPTION OF CHANGE	RCE	DATE

PREPARED BY:

© 2012 KIMLEY-HORN AND ASSOCIATES, INC.
 6800 Owensmouth Avenue, Suite 410, Los Angeles CA
 Tel (818) 227-2790 Fax (916) 608-0885

KEVIN KIMM R.C.E. 75462 DATE

REVIEWED BY:

CHARMAINE YAMBABO DATE
 ASSOCIATE CIVIL ENGINEER

APPROVED BY:

RAMIRO ADEVA DATE
 DIRECTOR OF PUBLIC WORKS/CITY ENGINEER

AGOURA ROAD WIDENING
 CANWOOD STREET
 SLOPE REINFORCEMENT NOTES & DETAILS
 PR-4

DRAWN BY: BS
 CHECKED BY: KK
 KHA JOB NUMBER: 099083017

SHEET 101 OF 101

100% SUBMITTAL - OCTOBER 2012

K:\Projects\Structural\099083017-Agoura Road Widening\Canwood\099083017-01-08-12-R-01.dwg 10-08-12-08:31 AM