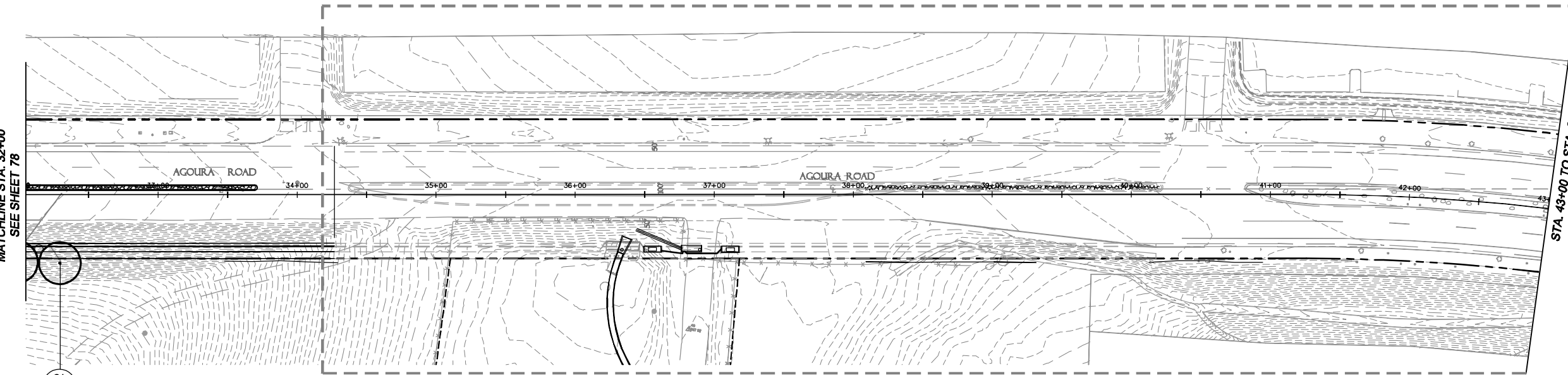


NOT PART OF PROJECT - DESIGN BY HILTON

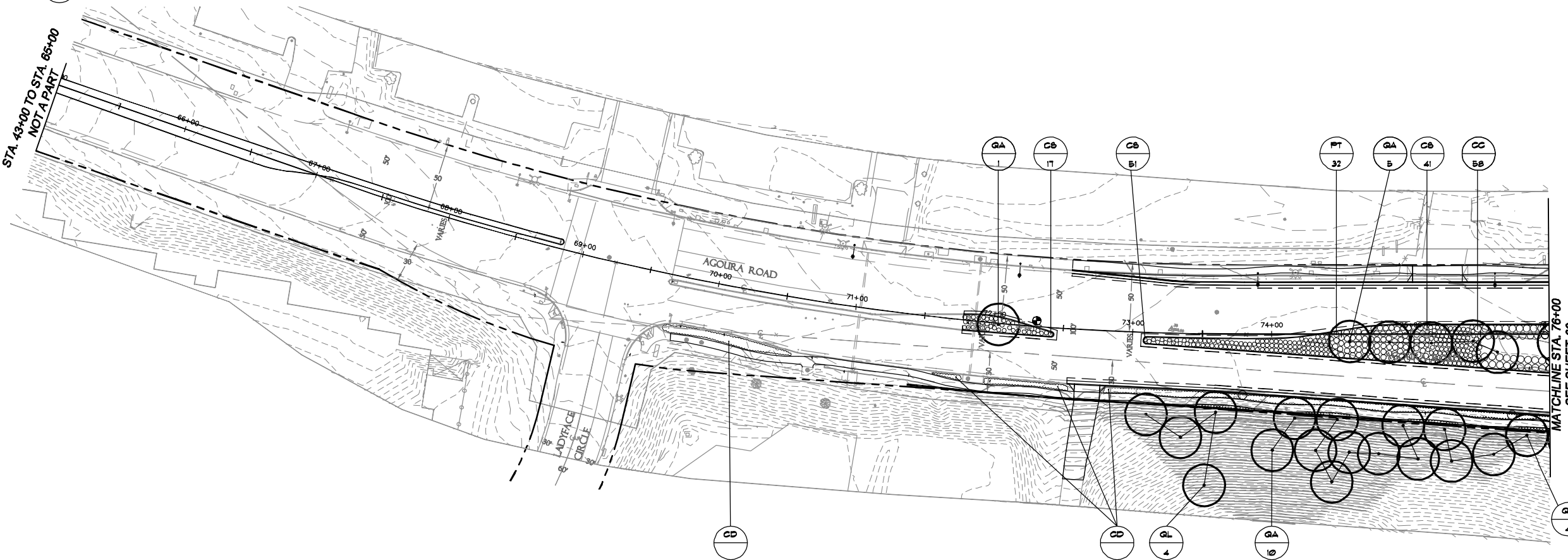
MATCHLINE STA. 32+00
SEE SHEET 78

STA. 43+00 TO STA. 65+00
NOT A PART



STA. 43+00 TO STA. 65+00
NOT A PART

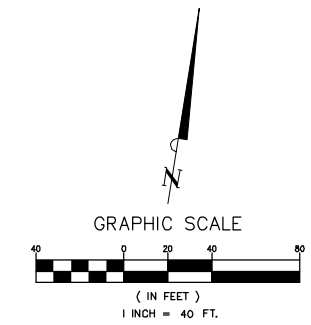
MATCHLINE STA. 76+00
SEE SHEET 80



NOTE
1. SEE SHEET LS-5 FOR PLANT MATERIAL LIST.

LEGEND

 ROCK PAVING FOR MEDIANS. SEE DETAIL 3 ON SHEET LS-1.



1		50%PS&E		9/9/11
2		75%PS&E		2/28/12
3		90%PS&E		6/8/12
4		100%PS&E		10/5/12
REV	SYMBOL	DESCRIPTION OF CHANGE	RCE	DATE

APPROVED BY:



Kimley-Horn and Associates, Inc.
© 2011 KIMLEY-HORN AND ASSOCIATES, INC.
6800 Owensmouth Avenue, Suite 410, Los Angeles CA
Tel (818) 227-2790 Fax (818) 227-2797

MICHAEL GHOI R.C.E. 67851 DATE

REVIEWED BY:

CHARMAINE YAMBAO DATE
ASSOCIATE CIVIL ENGINEER

APPROVED BY:

RAMIRO ADEVA DATE
CITY ENGINEER

CITY OF

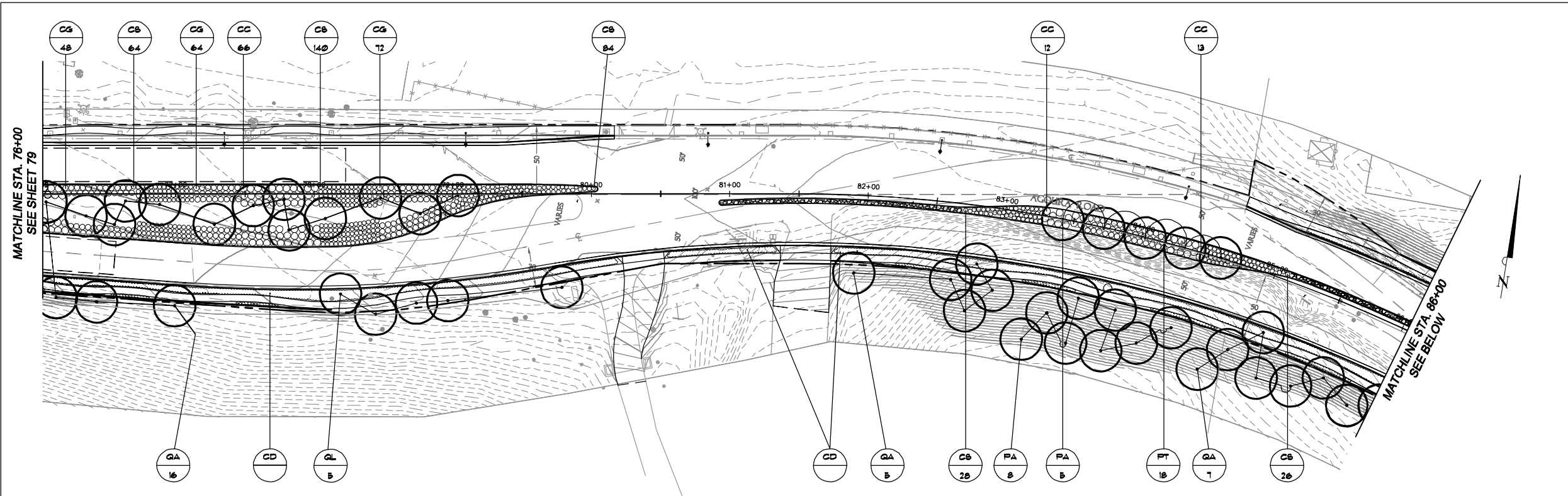
AGOURA HILLS

AGOURA ROAD WIDENING
PLANTING PLANS DWG LS-2

DRAWN BY: JP/RC CHECKED BY: JS/MC/SC KHA JOB NUMBER: 099083017

SHEET 79 OF 101

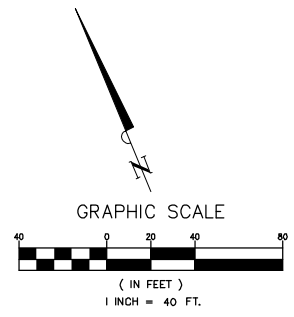
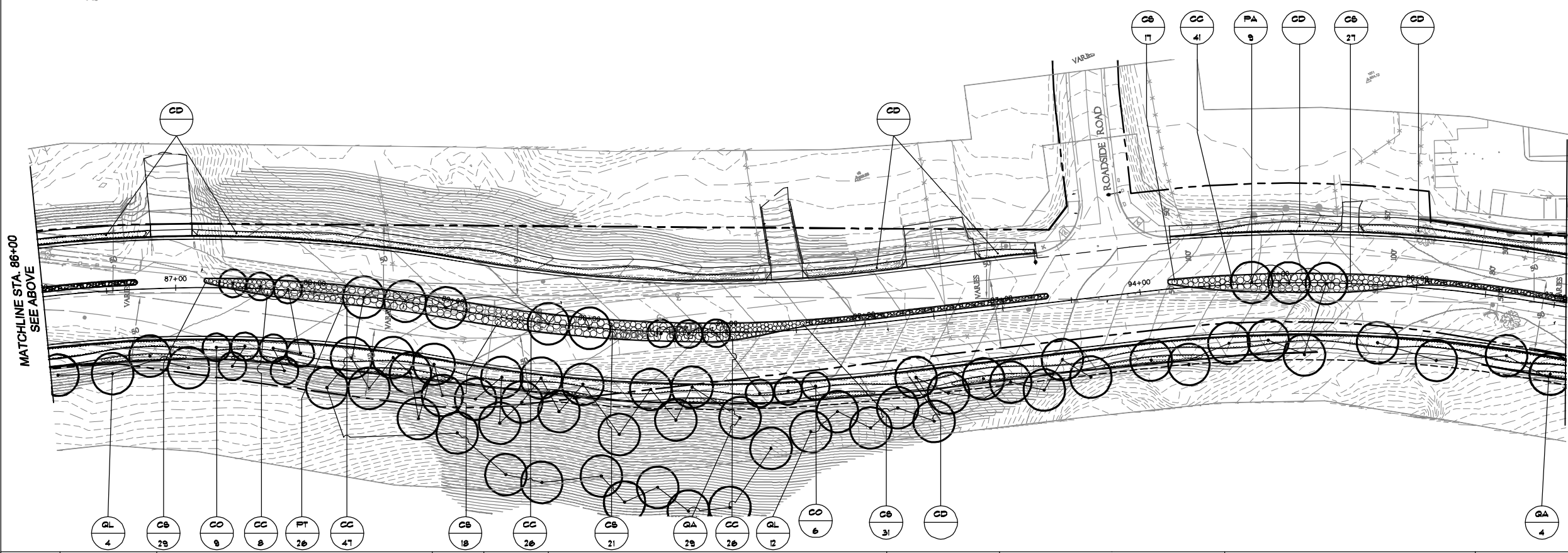
100% SUBMITTAL - OCTOBER 2012



NOTE
 1. SEE SHEET LS-5 FOR PLANT MATERIAL LIST.

LEGEND

ROCK PAVING FOR MEDIANS. SEE DETAIL 3 ON SHEET LS-1.



1		50%PS&E		9/9/11
2		75%PS&E		2/28/12
3		90%PS&E		6/8/12
4		100%PS&E		10/5/12
REV	SYMBOL	DESCRIPTION OF CHANGE	RCE	DATE

APPROVED BY:

Kimley-Horn and Associates, Inc.
 © 2011 KIMLEY-HORN AND ASSOCIATES, INC.
 6800 Owensmouth Avenue, Suite 410, Los Angeles CA
 Tel (818) 227-2790 Fax (818) 227-2797

MICHAEL GHOI R.C.E. 67851 DATE

REVIEWED BY:

CHARMAINE YAMBAO DATE
 ASSOCIATE CIVIL ENGINEER

APPROVED BY:

RAMIRO ADEVA DATE
 CITY ENGINEER

CITY OF
AGOURA HILLS

AGOURA ROAD WIDENING
 PLANTING PLANS DWG LS-3

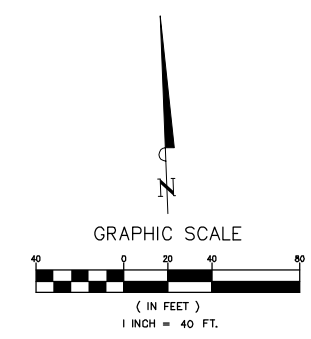
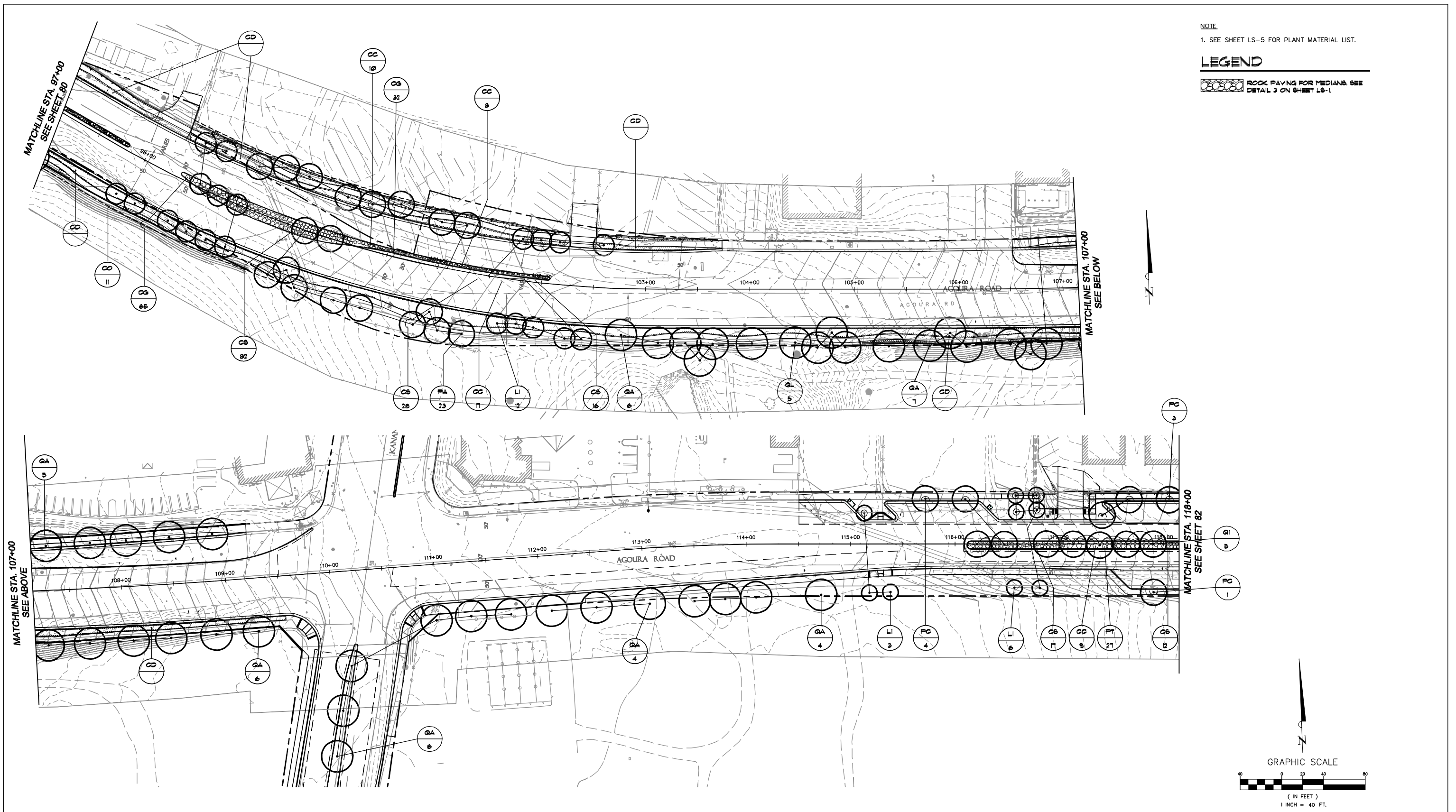
DRAWN BY: JP/RC CHECKED BY: JS/MC/SC KHA JOB NUMBER: 099083017

SHEET 80 OF 101

100% SUBMITTAL - OCTOBER 2012

NOTE
1. SEE SHEET LS-5 FOR PLANT MATERIAL LIST.

LEGEND
 ROCK PAVING FOR MEDIANS. SEE DETAIL 3 ON SHEET LS-1.



1		50%PS&E		9/9/11
2		75%PS&E		2/28/12
3		90%PS&E		6/8/12
4		100%PS&E		10/5/12
REV	SYMBOL	DESCRIPTION OF CHANGE	RCE	DATE

APPROVED BY:



Kimley-Horn and Associates, Inc.
 © 2011 KIMLEY-HORN AND ASSOCIATES, INC.
 6800 Owensmouth Avenue, Suite 410, Los Angeles CA
 Tel (818) 227-2790 Fax (818) 227-2797

MICHAEL GHOI R.C.E. 67851 DATE

REVIEWED BY:

CHARMAINE YAMBAO DATE
 ASSOCIATE CIVIL ENGINEER

APPROVED BY:

RAMIRO ADEVA DATE
 CITY ENGINEER

CITY OF

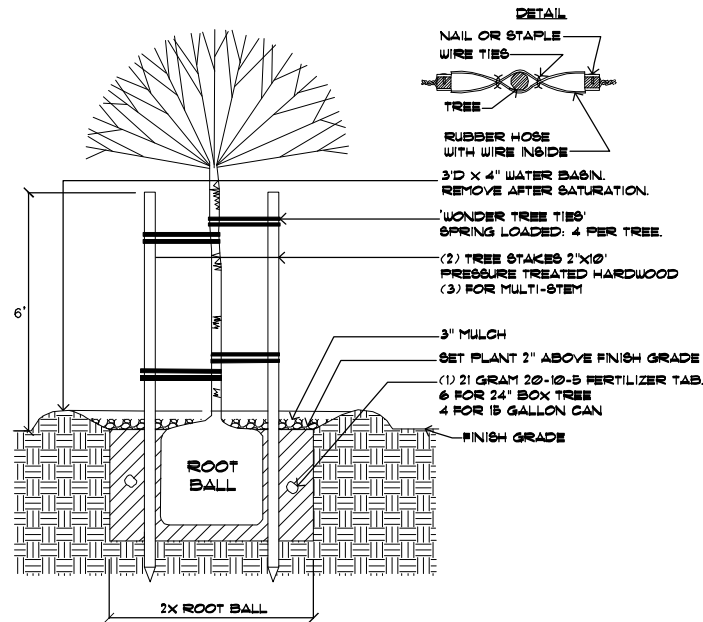
AGOURA HILLS

AGOURA ROAD WIDENING
 PLANTING PLANS DWG LS-4

DRAWN BY: JP/RC CHECKED BY: JS/MC/SC KHA JOB NUMBER: 099083017

SHEET 81 OF 101

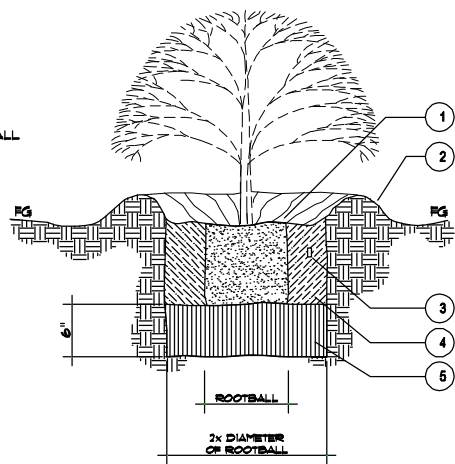
100% SUBMITTAL - OCTOBER 2012



1 TREE PLANTING/STAKING

- N.T.S.
NOTES:
 1. REMOVE NURSERY STAKES IF OVER 3/4" CALIPER
 2. DO NOT SET STAKES TO RUB AGAINST BARK OR BRANCHES OF TREE.
 3. SCARIFY SIDES OF TREE PIT, LOOSEN ROOTBALL

- 2 SHRUB PLANTING**
 N.T.S.
- 1 SHRUB ROOTBALL CROWN SHALL BE 1" ABOVE FINISH GRADE
 - 2 CONSTRUCT 3" HIGH WATER RETENTION BASIN
 - 3 PLANTING TABLETS
 - 4 BACKFILL MIX, TAMP FIRMLY
 - 5 UNAMENDED, UNCOMPACTED NATIVE SOIL

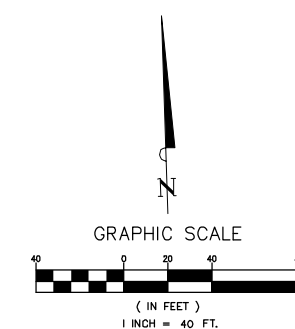
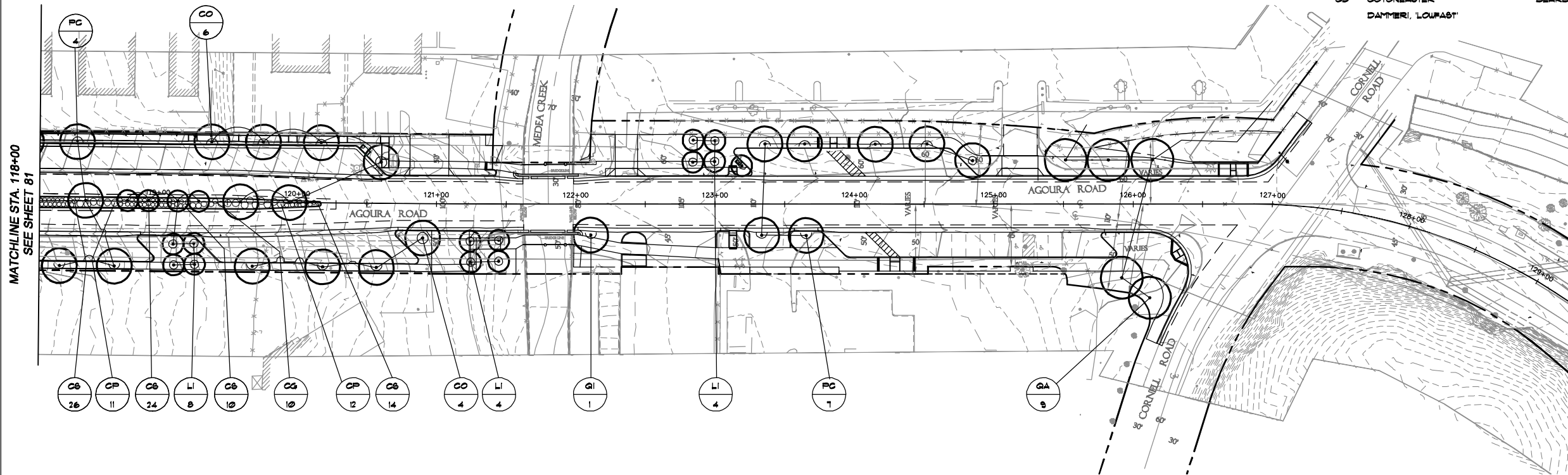


2 SHRUB PLANTING
 N.T.S.

- PLANTING NOTES**
1. ALL PLANTING AREAS TO RECEIVE 3" MIN. DEPTH OF BARK MULCH.
 2. LANDSCAPE CONTRACTOR TO OBTAIN AT LEAST THREE SOIL SAMPLES, ONE AT BACK END OF PROJECT NEAR LADYFACE COURT AND CORNELL ROAD, AND ONE @ MIDPOINT OF PROJECT. SAMPLES TO BE SUBMITTED TO A SOILS ANALYSIS LABORATORY FOR A SOILS NUTRIENT ANALYSIS REPORT. THE REPORT WILL BE INCORPORATED INTO THE BACKFILL MIXTURE FOR ALL PLANTING AREAS.
 3. IN MEANDERING SIDEWALK AREAS, PLANT BEARBERRY COTONEASTER IN CENTER OF PLANTER, BETWEEN CURB AND SIDEWALK. SPACE PLANTS 15' ON CENTER. EACH PLANT TO BE IRRIGATED WITH ONE BUBBLER HEAD.

PLANT MATERIAL LIST

KEY	SCIENTIFIC NAME	COMMON NAME	SIZE	WATER NEEDS
TREES				
QA	QUERCUS AGRIFOLIA	COAST LIVE OAK	24" BOX	LOW
QL	QUERCUS LOBATA	VALLEY OAK	24" BOX	LOW
CO	CERCIS OCCIDENTALIS	WESTERN REDBUD	24" BOX	LOW
PA	PLATANUS RACEMOSA	CALIFORNIA SYCAMORE	24" BOX	MED
LI	LAGERSTROEMIA INDICA	'WATERMELON RED'	24" BOX	MED
PC	PISTACIA CHINENSIS	CHINESE PISTACHE	24" BOX	LOW
SHRUBS				
AG	ABELIA GRANDIFLORA	GLOSSY ABELIA	5 G.C.	MED
CC	CISTUS CORBARIENSIS	WHITE ROCKROSE	5 G.C.	LOW
CP	CISTUS PURPUREUS	ORCHID ROCKROSE	5 G.C.	LOW
DI	DIETES IRIDIODES	WHITE FORTNIGHT LILY	1 G.C.	LOW
DB	DIETES BICOLOR	YELLOW FORTNIGHT LILY	1 G.C.	LOW
CB	CONVOLVULUS SABATIUS	GROUND MORNING GLORY	1 G.C.	LOW
HA	HETEROMELES ARBUTIFOLIA	TOYON	5 G.C.	LOW
LA	LAVANDULA ANGUSTIFOLIA	LAVENDER	5 G.C.	LOW
LM	LANTANA MONTEVIDENSIS	TRAILING LANTANA	1 G.C.	LOW
MA	MAHONIA AQUIFOLIUM	'COMPACTA'	5 G.C.	LOW
PT	PHORMIUM TENAX CRUBRUM	RED NEW ZEALAND FLAX	5 G.C.	LOW
RO	ROSMARINUS OFFICINALIS	'PROSTRATUS'	5 G.C.	LOW
GROUND COVER				
AR	ARCTOSTAPHYLOS UVA-URSI	'RADIANT'	1 G.C.	LOW
CG	CEANOTHUS GRISBUS	'HORIZONTALIS'	1 G.C.	LOW
VM	VINCA MINOR	DWARF PERIWINKLE	1 G.C.	LOW
CD	COTONEASTER DAMMERI, 'LOURAST'	BEARBERRY COTONEASTER	1 G.C.	MED



1		50%PS&E		9/9/11
2		75%PS&E		2/28/12
3		90%PS&E		6/8/12
4		100%PS&E		10/5/12
REV	SYMBOL	DESCRIPTION OF CHANGE	RCE	DATE

APPROVED BY:

Kimley-Horn and Associates, Inc.
 © 2011 KIMLEY-HORN AND ASSOCIATES, INC.
 6800 Owensmouth Avenue, Suite 410, Los Angeles CA
 Tel (818) 227-2790 Fax (818) 227-2797

MICHAEL GHOI R.C.E. 67851 DATE

REVIEWED BY:

CHARMAINE YAMBAO DATE
 ASSOCIATE CIVIL ENGINEER

APPROVED BY:

RAMIRO ADEVA DATE
 CITY ENGINEER

CITY OF

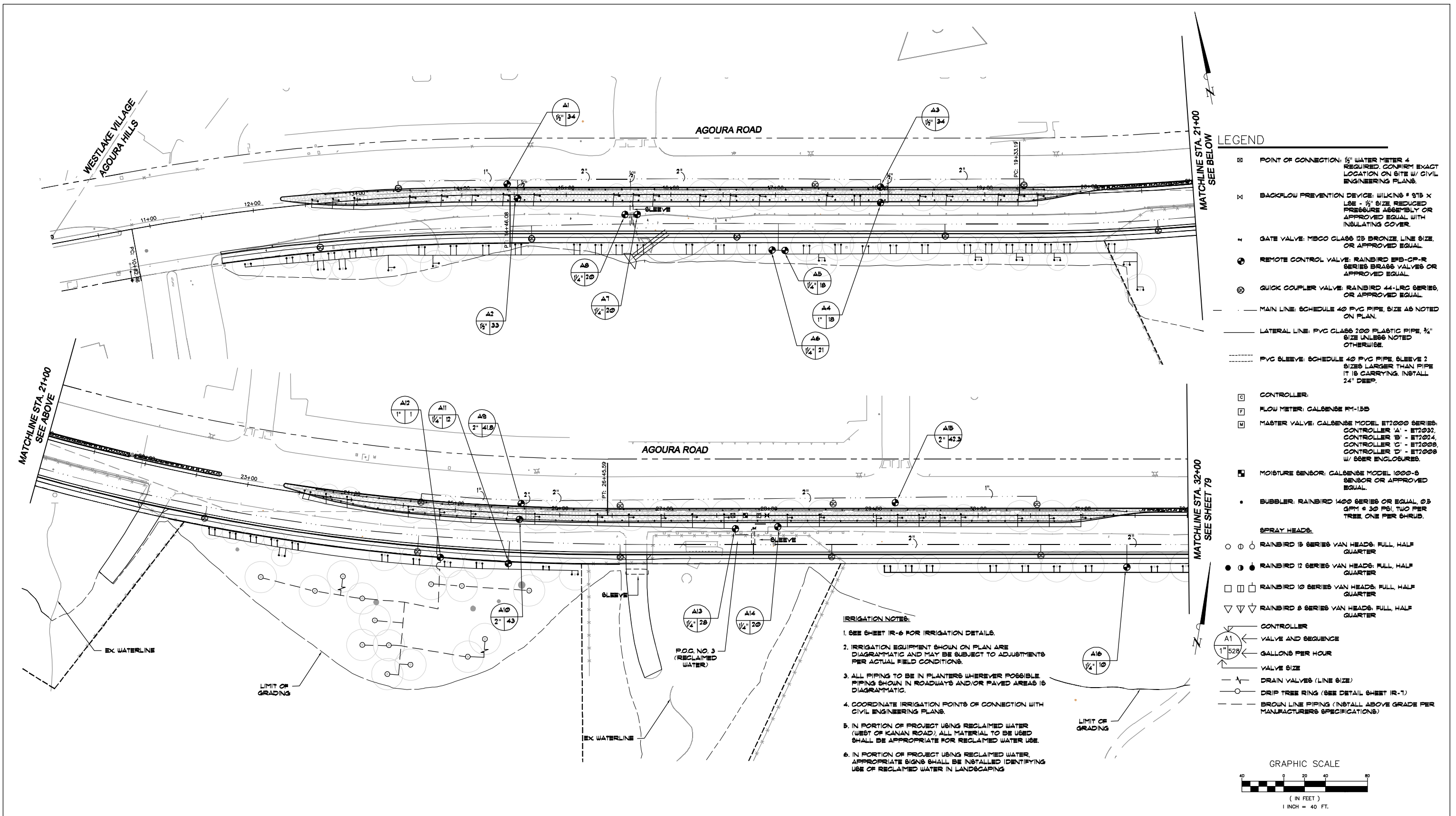
AGOURA HILLS

AGOURA ROAD WIDENING
 PLANTING PLANS DWG LS-5

DRAWN BY: JP/RC
 CHECKED BY: JS/MC/SC
 KHA JOB NUMBER: 099083017

SHEET 82 OF 101

100% SUBMITTAL - OCTOBER 2012



1		50%PS&E		9/9/11
2		75%PS&E		2/28/12
3		90%PS&E		6/8/12
4		100%PS&E		10/5/12
REV	SYMBOL	DESCRIPTION OF CHANGE	RCE	DATE

APPROVED BY:

Kimley-Horn and Associates, Inc.
 © 2011 KIMLEY-HORN AND ASSOCIATES, INC.
 6800 Owensmouth Avenue, Suite 410, Los Angeles CA
 Tel (818) 227-2790 Fax (818) 227-2797

MICHAEL CHOI R.C.E. 67851 DATE

REVIEWED BY:

CHARMAINE YAMBABO DATE
 ASSOCIATE CIVIL ENGINEER

APPROVED BY:

RAMIRO ADEVA DATE
 CITY ENGINEER

CITY OF

AGOURA HILLS

AGOURA ROAD WIDENING
IRRIGATION PLANS IR-1

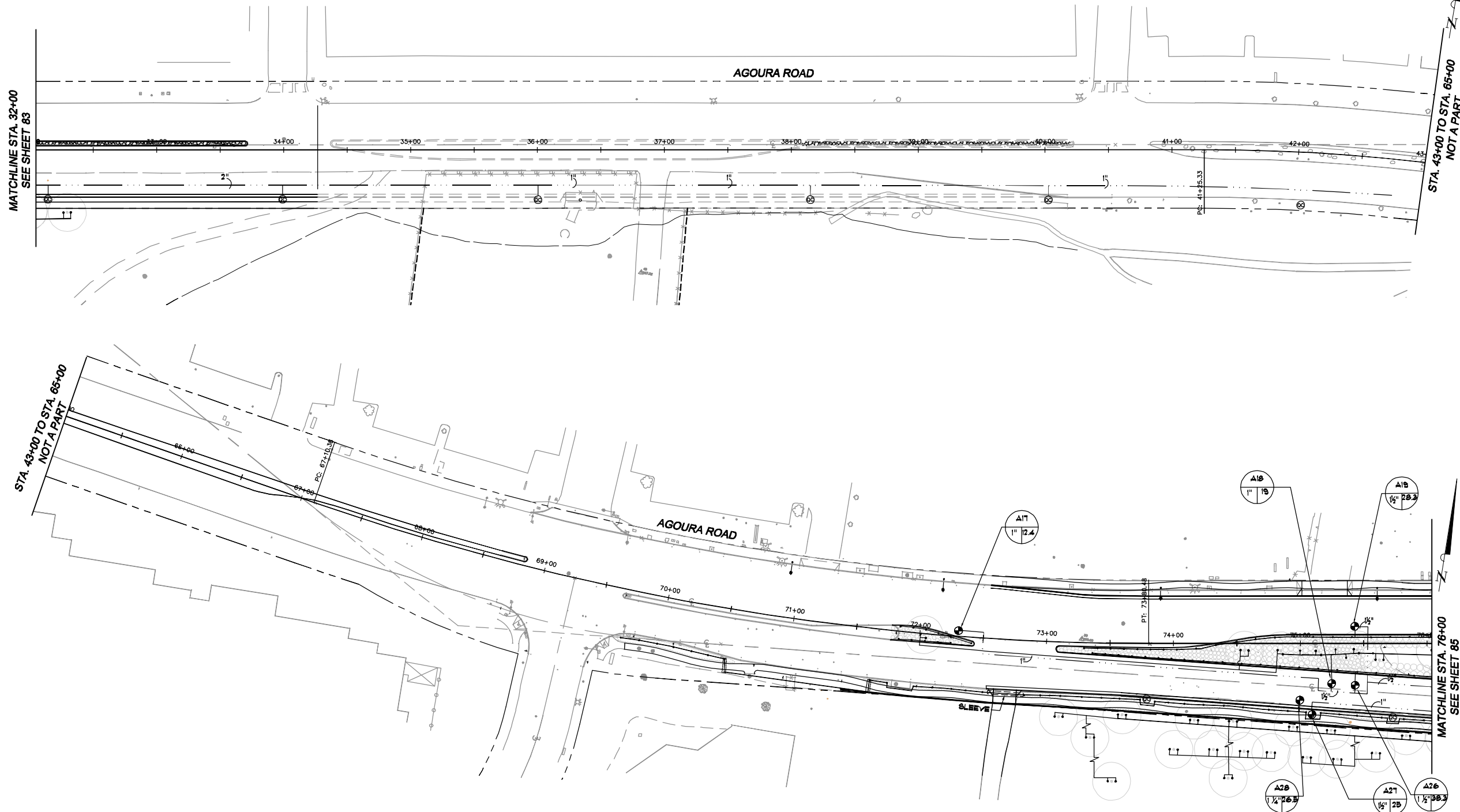
DRAWN BY: JP/RC
 CHECKED BY: JS/MC/SC
 KHA JOB NUMBER: 099083017

SHEET 83 OF 101

100% SUBMITTAL - OCTOBER 2012

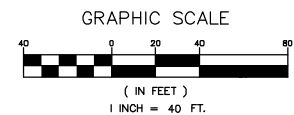
IRRIGATION NOTES:

1. SEE SHEET IR-6 FOR IRRIGATION DETAILS.
2. IRRIGATION EQUIPMENT SHOWN ON PLAN ARE DIAGRAMMATIC AND MAY BE SUBJECT TO ADJUSTMENTS PER ACTUAL FIELD CONDITIONS.
3. ALL PIPING TO BE IN PLANTERS WHEREVER POSSIBLE. PIPING SHOWN IN ROADWAYS AND/OR PAVED AREAS IS DIAGRAMMATIC.
4. COORDINATE IRRIGATION POINTS OF CONNECTION WITH CIVIL ENGINEERING PLANS.
5. IN PORTION OF PROJECT USING RECLAIMED WATER (WEST OF KANAN ROAD), ALL MATERIAL TO BE USED SHALL BE APPROPRIATE FOR RECLAIMED WATER USE.
6. IN PORTION OF PROJECT USING RECLAIMED WATER, APPROPRIATE SIGNS SHALL BE INSTALLED IDENTIFYING USE OF RECLAIMED WATER IN LANDSCAPING.



LEGEND

- ⊗ POINT OF CONNECTION: 1/2" WATER METER 4 REQUIRED. CONFIRM EXACT LOCATION ON SITE W/ CIVIL ENGINEERING PLANS.
- ⊗ BACKFLOW PREVENTION DEVICE: WILKINS # 975 X L&E - 1/2" SIZE REDUCED PRESSURE ASSEMBLY OR APPROVED EQUAL WITH INSULATING COVER.
- ⊗ GATE VALVE: M800 CLASS 125 BRONZE LINE SIZE OR APPROVED EQUAL.
- ⊗ REMOTE CONTROL VALVE: RAINBIRD 818-CP-R SERIES BRASS VALVES OR APPROVED EQUAL.
- ⊗ QUICK COUPLER VALVE: RAINBIRD 44-LRC SERIES OR APPROVED EQUAL.
- MAIN LINE: SCHEDULE 40 PVC PIPE, SIZE AS NOTED ON PLAN.
- LATERAL LINE: PVC CLASS 200 PLASTIC PIPE, 1/2" SIZE UNLESS NOTED OTHERWISE.
- - - - - PVC SLEEVE: SCHEDULE 40 PVC PIPE, SLEEVE 2 SIZES LARGER THAN PIPE IT IS CARRYING. INSTALL 24" DEEP.
- ⊠ CONTROLLER:
- ⊠ FLOW METER: CALSENSE FM-155
- ⊠ MASTER VALVE: CALSENSE MODEL ET2000 SERIES: CONTROLLER 'A' - ET2032, CONTROLLER 'B' - ET2024, CONTROLLER 'C' - ET2008, CONTROLLER 'D' - ET2008 W/ 60ER ENCLOSURE.
- ⊠ MOISTURE SENSOR: CALSENSE MODEL 1020-S SENSOR OR APPROVED EQUAL.
- BUBBLER: RAINBIRD 1400 SERIES OR EQUAL, 0.5 GPM @ 30 PSI, TWO PER TREE, ONE PER SHRUB.
- SPRAY HEADS:**
- RAINBIRD 15 SERIES VAN HEADS: FULL, HALF QUARTER
- RAINBIRD 12 SERIES VAN HEADS: FULL, HALF QUARTER
- RAINBIRD 10 SERIES VAN HEADS: FULL, HALF QUARTER
- ▽ RAINBIRD 8 SERIES VAN HEADS: FULL, HALF QUARTER
- ⊠ CONTROLLER
- ⊠ VALVE AND SEQUENCE
- ⊠ GALLONS PER HOUR
- ⊠ VALVE SIZE
- ⊠ DRAIN VALVES (LINE SIZE)
- ⊠ DRIP TREE RING (SEE DETAIL SHEET IR-1)
- ⊠ BROWN LINE PIPING (INSTALL ABOVE GRADE PER MANUFACTURER'S SPECIFICATIONS)



1		50%PS&E		9/9/11
2		75%PS&E		2/28/12
3		90%PS&E		6/8/12
4		100%PS&E		10/5/12
REV	SYMBOL	DESCRIPTION OF CHANGE	RCE	DATE

APPROVED BY:

Kimley-Horn and Associates, Inc.
 © 2011 KIMLEY-HORN AND ASSOCIATES, INC.
 6800 Owensmouth Avenue, Suite 410, Los Angeles CA
 Tel (818) 227-2790 Fax (818) 227-2797

MICHAEL CHOI R.C.E. 67851 DATE



REVIEWED BY:

CHARMAINE YAMBABO DATE
 ASSOCIATE CIVIL ENGINEER

APPROVED BY:

RAMIRO ADEVA DATE
 CITY ENGINEER

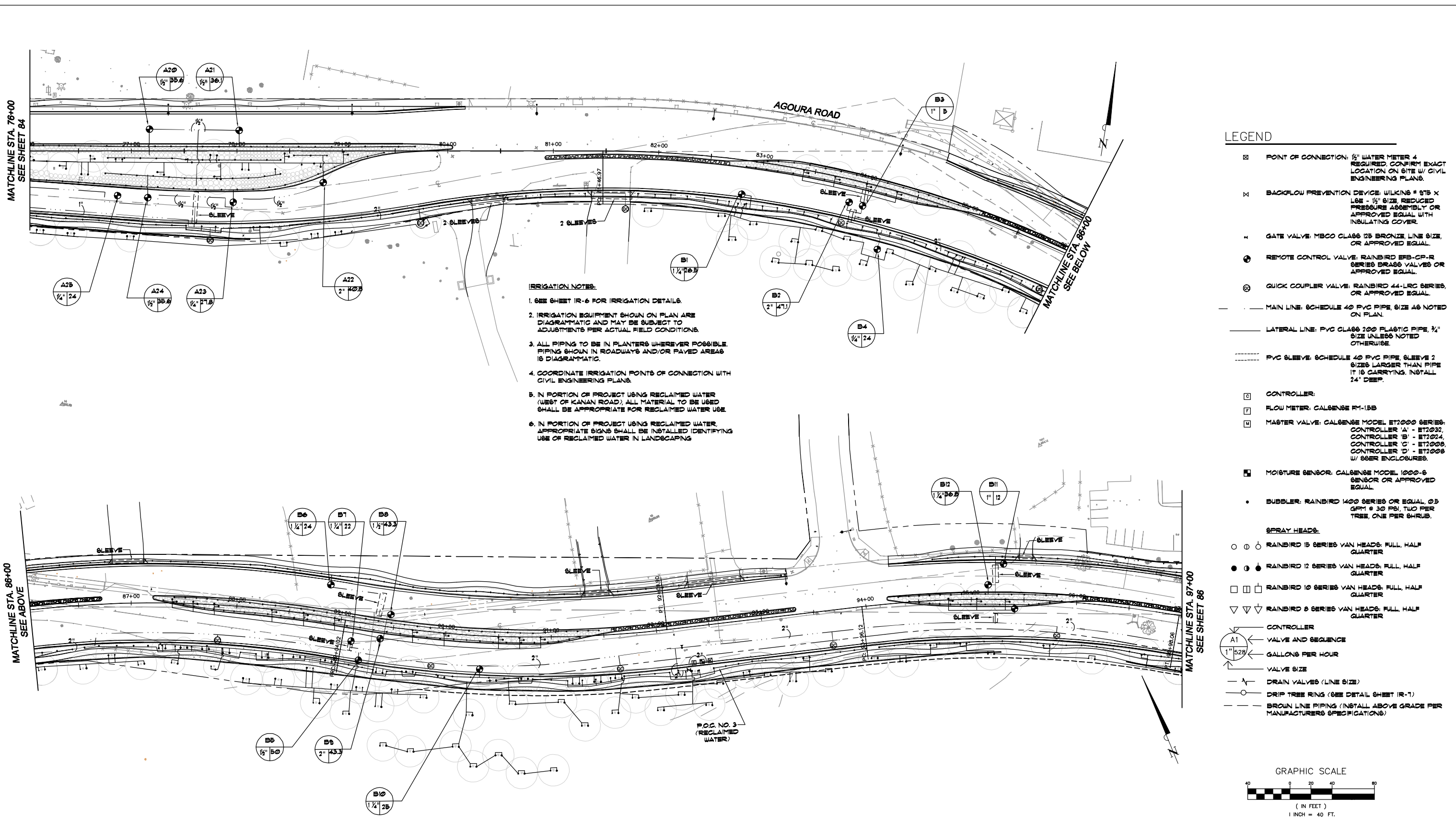


AGOURA ROAD WIDENING
IRRIGATION PLANS IR-2

DRAWN BY: JP/RC
 CHECKED BY: JS/MC/SC
 KHA JOB NUMBER: 099083017

SHEET 84 OF 101

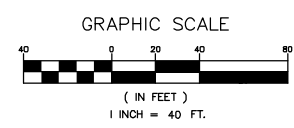
100% SUBMITTAL - OCTOBER 2012



IRRIGATION NOTES:

- SEE SHEET IR-6 FOR IRRIGATION DETAILS.
- IRRIGATION EQUIPMENT SHOWN ON PLAN ARE DIAGRAMMATIC AND MAY BE SUBJECT TO ADJUSTMENTS PER ACTUAL FIELD CONDITIONS.
- ALL PIPING TO BE IN PLANTERS WHEREVER POSSIBLE. PIPING SHOWN IN ROADWAYS AND/OR PAVED AREAS IS DIAGRAMMATIC.
- COORDINATE IRRIGATION POINTS OF CONNECTION WITH CIVIL ENGINEERING PLANS.
- IN PORTION OF PROJECT USING RECLAIMED WATER (WEST OF KANAN ROAD), ALL MATERIAL TO BE USED SHALL BE APPROPRIATE FOR RECLAIMED WATER USE.
- IN PORTION OF PROJECT USING RECLAIMED WATER, APPROPRIATE SIGNS SHALL BE INSTALLED IDENTIFYING USE OF RECLAIMED WATER IN LANDSCAPING.

- LEGEND**
- ☒ POINT OF CONNECTION: 1/2" WATER METER 4 REQUIRED. CONFIRM EXACT LOCATION ON SITE W/ CIVIL ENGINEERING PLANS.
 - ☒ BACKFLOW PREVENTION DEVICE: WILKINS # 975 X 1.66 - 1/2" SIZE REDUCED PRESSURE ASSEMBLY OR APPROVED EQUAL WITH INSULATING COVER.
 - ⊕ GATE VALVE: MICO CLASS 25 BRONZE, LINE SIZE, OR APPROVED EQUAL.
 - ⊕ REMOTE CONTROL VALVE: RAINBIRD EPB-CP-R SERIES BRASS VALVES OR APPROVED EQUAL.
 - ⊕ QUICK COUPLER VALVE: RAINBIRD 44-LRC SERIES, OR APPROVED EQUAL.
 - MAIN LINE: SCHEDULE 40 PVC PIPE, SIZE AS NOTED ON PLAN.
 - LATERAL LINE: PVC CLASS 200 PLASTIC PIPE, 1/2" SIZE UNLESS NOTED OTHERWISE.
 - PVC SLEEVE: SCHEDULE 40 PVC PIPE, SLEEVE 2 SIZES LARGER THAN PIPE IT IS CARRYING. INSTALL 24" DEEP.
 - ☐ CONTROLLER:
 - ☐ FLOW METER: CALSENSE FM-15B
 - ☐ MASTER VALVE: CALSENSE MODEL ET2000 SERIES: CONTROLLER 'A' - ET2022, CONTROLLER 'B' - ET2024, CONTROLLER 'C' - ET2026, CONTROLLER 'D' - ET2028 W/ 8SER ENCLOSURES.
 - ☐ MOISTURE SENSOR: CALSENSE MODEL 1000-S SENSOR OR APPROVED EQUAL.
 - BUBBLER: RAINBIRD 1400 SERIES OR EQUAL, 0.5 GPM @ 30 PSI, TWO PER TREE, ONE PER SHRUB.
 - SPRAY HEADS:**
 - ○ ○ RAINBIRD 15 SERIES VAN HEADS: FULL, HALF QUARTER
 - ● ● RAINBIRD 12 SERIES VAN HEADS: FULL, HALF QUARTER
 - □ □ RAINBIRD 10 SERIES VAN HEADS: FULL, HALF QUARTER
 - ▽ ▽ ▽ RAINBIRD 8 SERIES VAN HEADS: FULL, HALF QUARTER
 - ☐ CONTROLLER
 - ← VALVE AND SEQUENCE
 - ← GALLONS PER HOUR
 - ← VALVE SIZE
 - DRAIN VALVES (LINE SIZE)
 - DRIP TREE RING (SEE DETAIL SHEET IR-1)
 - BROWN LINE PIPING (INSTALL ABOVE GRADE PER MANUFACTURERS SPECIFICATIONS)



1		50%PS&E		9/9/11
2		75%PS&E		2/28/12
3		90%PS&E		6/8/12
4		100%PS&E		10/5/12
REV	SYMBOL	DESCRIPTION OF CHANGE	RCE	DATE

APPROVED BY:

Kimley-Horn and Associates, Inc.
 © 2011 KIMLEY-HORN AND ASSOCIATES, INC.
 6800 Owensmouth Avenue, Suite 410, Los Angeles CA
 Tel (818) 227-2790 Fax (818) 227-2797

MICHAEL CHOI R.C.E. 67851 DATE

REVIEWED BY:

CHARMAINE YAMBABO DATE
 ASSOCIATE CIVIL ENGINEER

APPROVED BY:

RAMIRO ADEVA DATE
 CITY ENGINEER

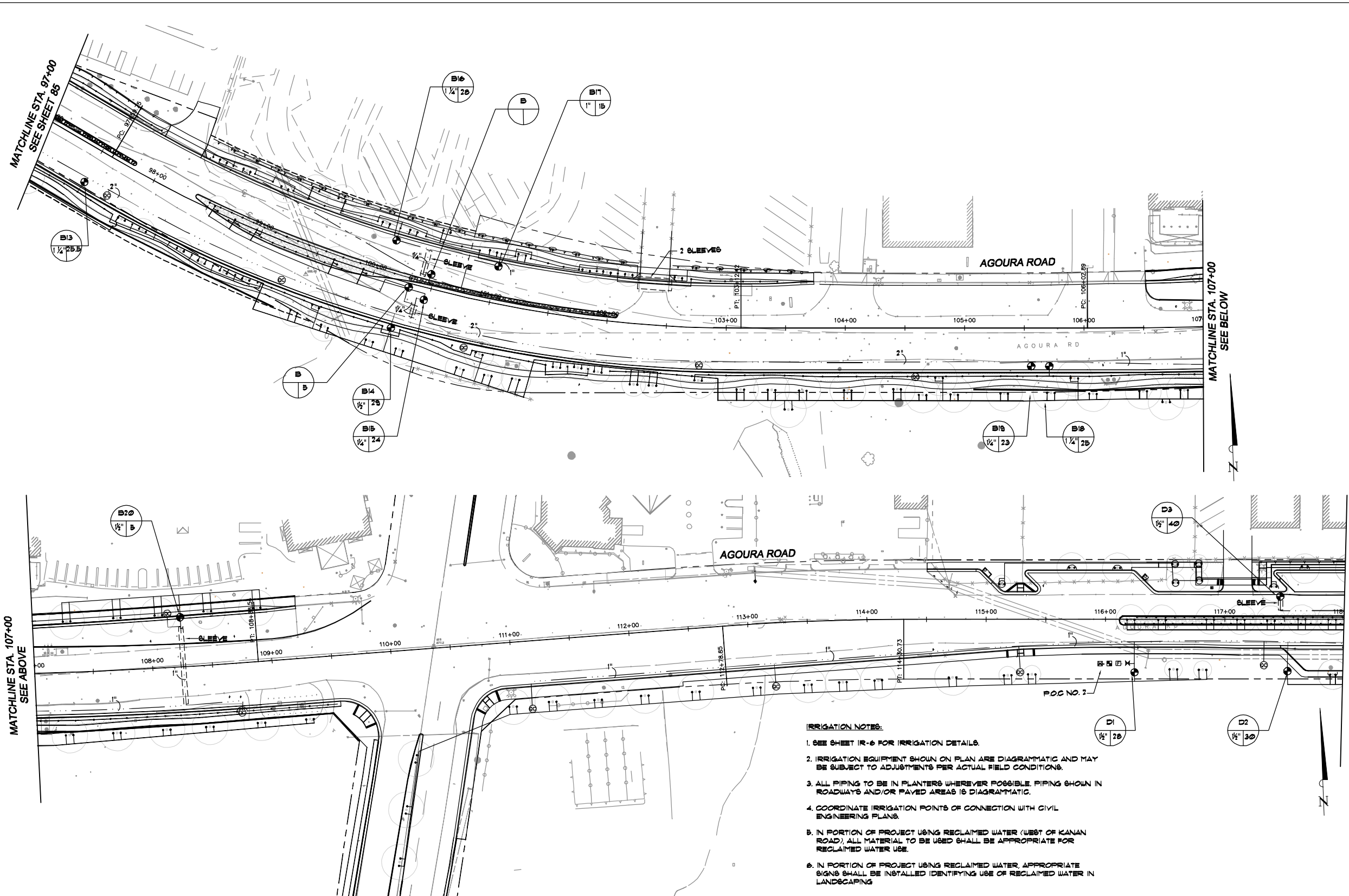
CITY OF
AGOURA HILLS

AGOURA ROAD WIDENING
 IRRIGATION PLANS IR-3

DRAWN BY: JP/RC
 CHECKED BY: JS/MC/SC
 KHA JOB NUMBER: 099083017

SHEET 85 OF 101

100% SUBMITTAL - OCTOBER 2012



- LEGEND**
- ⊗ POINT OF CONNECTION: 1/2" WATER METER 4 REQUIRED. CONFIRM EXACT LOCATION ON SITE W/ CIVIL ENGINEERING PLANS.
 - ⊗ BACKFLOW PREVENTION DEVICE: WILKING 8" ST5 X LSE - 1/2" SIZE, REDUCED PRESSURE ASSEMBLY OR APPROVED EQUAL WITH INSULATING COVER.
 - ⊗ GATE VALVE: MBCO CLASS 25 BRONZE, LINE SIZE, OR APPROVED EQUAL.
 - ⊗ REMOTE CONTROL VALVE: RAINBIRD EPD-CP-R SERIES BRASS VALVES OR APPROVED EQUAL.
 - ⊗ QUICK COUPLER VALVE: RAINBIRD 44-LRC SERIES, OR APPROVED EQUAL.
 - MAIN LINE: SCHEDULE 40 PVC PIPE, SIZE AS NOTED ON PLAN.
 - LATERAL LINE: PVC CLASS 200 PLASTIC PIPE, 1/2" SIZE UNLESS NOTED OTHERWISE.
 - PVC SLEEVE: SCHEDULE 40 PVC PIPE, SLEEVE 2" SIZE LARGER THAN PIPE IT IS CARRYING. INSTALL 24" DEEP.
 - ⊗ CONTROLLER.
 - ⊗ FLOW METER: CALSENSE FM-15B
 - ⊗ MASTER VALVE: CALSENSE MODEL ET2000 SERIES: CONTROLLER 'A' - ET2032, CONTROLLER 'B' - ET2024, CONTROLLER 'C' - ET2008, CONTROLLER 'D' - ET2008 W/ 66ER ENCLOSURES.
 - ⊗ MOISTURE SENSOR: CALSENSE MODEL 1000-S SENSOR OR APPROVED EQUAL.
 - BUBBLER: RAINBIRD 1400 SERIES OR EQUAL, 0.5 GPM @ 30 PSI, TWO PER TREE ONE PER SHRUB.
 - SPRAY HEADS:**
 - ○ ○ RAINBIRD 15 SERIES VAN HEADS: FULL, HALF QUARTER
 - ● ● RAINBIRD 12 SERIES VAN HEADS: FULL, HALF QUARTER
 - □ □ RAINBIRD 10 SERIES VAN HEADS: FULL, HALF QUARTER
 - ▽ ▽ ▽ RAINBIRD 8 SERIES VAN HEADS: FULL, HALF QUARTER
 - ⊗ CONTROLLER
 - ⊗ VALVE AND SEQUENCE
 - ⊗ GALLONS PER HOUR
 - ⊗ VALVE SIZE
 - DRAIN VALVES (LINE SIZE)
 - DRIP TREE RING (SEE DETAIL SHEET IR-1)
 - BROWN LINE PIPING (INSTALL ABOVE GRADE PER MANUFACTURER'S SPECIFICATIONS)

- IRRIGATION NOTES:**
- SEE SHEET IR-6 FOR IRRIGATION DETAILS.
 - IRRIGATION EQUIPMENT SHOWN ON PLAN ARE DIAGRAMMATIC AND MAY BE SUBJECT TO ADJUSTMENTS PER ACTUAL FIELD CONDITIONS.
 - ALL PIPING TO BE IN PLANTERS WHEREVER POSSIBLE. PIPING SHOWN IN ROADWAYS AND/OR PAVED AREAS IS DIAGRAMMATIC.
 - COORDINATE IRRIGATION POINTS OF CONNECTION WITH CIVIL ENGINEERING PLANS.
 - IN PORTION OF PROJECT USING RECLAIMED WATER (WEST OF KANAN ROAD), ALL MATERIAL TO BE USED SHALL BE APPROPRIATE FOR RECLAIMED WATER USE.
 - IN PORTION OF PROJECT USING RECLAIMED WATER, APPROPRIATE SIGNS SHALL BE INSTALLED IDENTIFYING USE OF RECLAIMED WATER IN LANDSCAPING.

1		50%PS&E		9/9/11
2		75%PS&E		2/28/12
3		90%PS&E		6/8/12
4		100%PS&E		10/5/12
REV	SYMBOL	DESCRIPTION OF CHANGE	RCE	DATE

APPROVED BY:

© 2011 KIMLEY-HORN AND ASSOCIATES, INC.
6800 Owensmouth Avenue, Suite 410, Los Angeles CA
Tel (818) 227-2790 Fax (818) 227-2797

MICHAEL CHOI R.C.E. 67851 DATE

REVIEWED BY:

CHARMAINE YAMBABO DATE
ASSOCIATE CIVIL ENGINEER

APPROVED BY:

RAMIRO ADEVA DATE
CITY ENGINEER

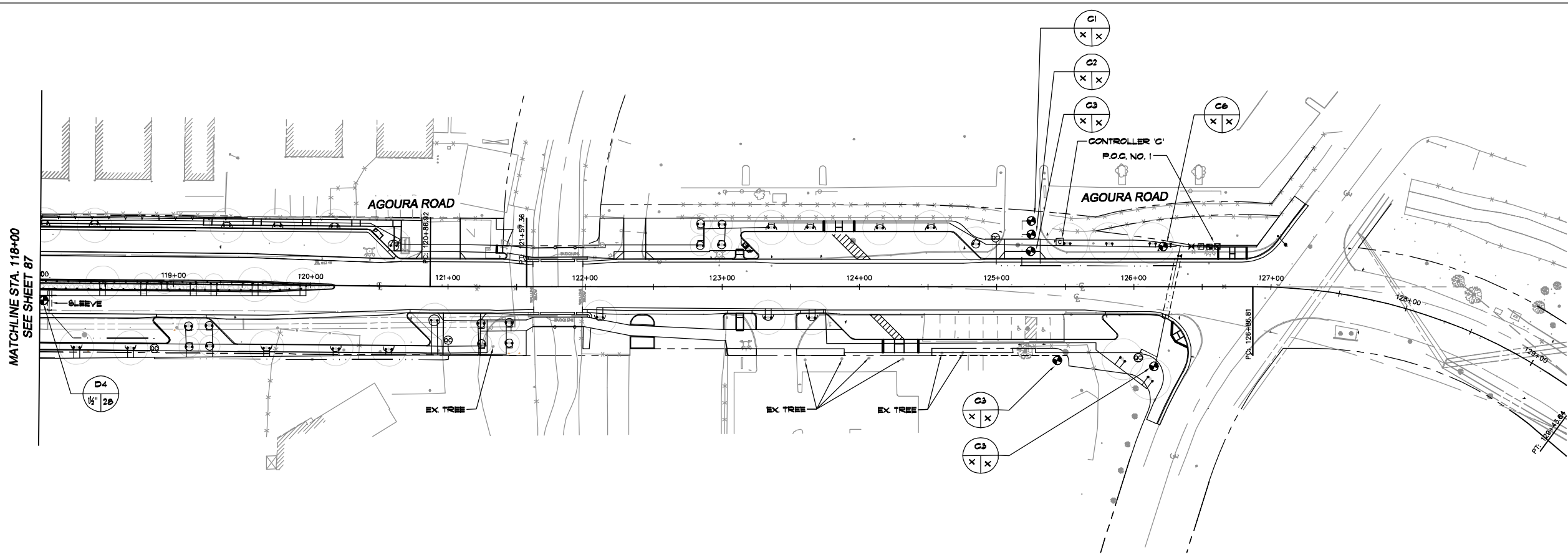
CITY OF
AGGOURA HILLS

AGOURA ROAD WIDENING
IRRIGATION PLANS IR-4

DRAWN BY: JP/RC
CHECKED BY: JS/MC/SC
KHA JOB NUMBER: 099083017

SHEET 86 OF 101

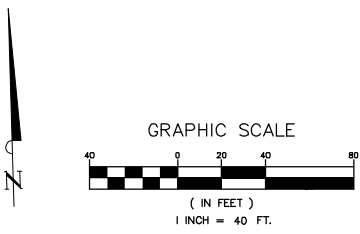
100% SUBMITTAL – OCTOBER 2012



- LEGEND**
- ⊗ POINT OF CONNECTION: 1/2" WATER METER 4 REQUIRED. CONFIRM EXACT LOCATION ON SITE W/ CIVIL ENGINEERING PLANS.
 - ⊗ BACKFLOW PREVENTION DEVICE: WILKINS # 915 X 155 - 1/2" SIZE REDUCED PRESSURE ASSEMBLY OR APPROVED EQUAL WITH INSULATING COVER.
 - ⊗ GATE VALVE: MICO CLASS 125 BRONZE, LINE SIZE, OR APPROVED EQUAL.
 - ⊗ REMOTE CONTROL VALVE: RAINBIRD EPB-CP-R SERIES BRASS VALVES OR APPROVED EQUAL.
 - ⊗ QUICK COUPLER VALVE: RAINBIRD 44-LRC SERIES, OR APPROVED EQUAL.
 - MAIN LINE: SCHEDULE 40 PVC PIPE, SIZE AS NOTED ON PLAN.
 - LATERAL LINE: PVC CLASS 200 PLASTIC PIPE, 1/2" SIZE UNLESS NOTED OTHERWISE.
 - - - - - PVC SLEEVE: SCHEDULE 40 PVC PIPE, SLEEVE 2 SIZES LARGER THAN PIPE IT IS CARRYING. INSTALL 24" DEEP.
 - ⊠ CONTROLLER:
 - ⊠ FLOW METER: CALSENSE FM-155
 - ⊠ MASTER VALVE: CALSENSE MODEL ET2000 SERIES: CONTROLLER 'A' - ET2022, CONTROLLER 'B' - ET2024, CONTROLLER 'C' - ET2026, CONTROLLER 'D' - ET2028 W/ 66ER ENCLOSURES.
 - ⊠ MOISTURE SENSOR: CALSENSE MODEL 1000-S SENSOR OR APPROVED EQUAL.
 - SUBBLER: RAINBIRD 1400 SERIES OR EQUAL, 0.5 GPM @ 30 PSI, TWO PER TREE, ONE PER SHRUB.
- SPRAY HEADS:**
- ○ ○ RAINBIRD 15 SERIES VAN HEADS: FULL, HALF QUARTER
 - ● ● RAINBIRD 12 SERIES VAN HEADS: FULL, HALF QUARTER
 - □ □ RAINBIRD 10 SERIES VAN HEADS: FULL, HALF QUARTER
 - ▽ ▽ ▽ RAINBIRD 8 SERIES VAN HEADS: FULL, HALF QUARTER
- ⊠ CONTROLLER
- ⊠ A1 VALVE AND SEQUENCE
- ⊠ 1" 528 GALLONS PER HOUR
- ⊠ VALVE SIZE
- ⊠ DRAIN VALVES (LINE SIZE)
- ⊠ DRIP TREE RING (SEE DETAIL SHEET IR-1)
- - - - - BROWN LINE PIPING (INSTALL ABOVE GRADE PER MANUFACTURERS SPECIFICATIONS)

- IRRIGATION NOTES:**
1. SEE SHEET IR-6 FOR IRRIGATION DETAILS.
 2. IRRIGATION EQUIPMENT SHOWN ON PLAN ARE DIAGRAMMATIC AND MAY BE SUBJECT TO ADJUSTMENTS PER ACTUAL FIELD CONDITIONS.
 3. ALL PIPING TO BE IN PLANTERS WHEREVER POSSIBLE. PIPING SHOWN IN ROADWAYS AND/OR PAVED AREAS IS DIAGRAMMATIC.
 4. COORDINATE IRRIGATION POINTS OF CONNECTION WITH CIVIL ENGINEERING PLANS.
 5. IN PORTION OF PROJECT USING RECLAIMED WATER (WEST OF KANAN ROAD) ALL MATERIAL TO BE USED SHALL BE APPROPRIATE FOR RECLAIMED WATER USE.
 6. IN PORTION OF PROJECT USING RECLAIMED WATER, APPROPRIATE SIGNS SHALL BE INSTALLED IDENTIFYING USE OF RECLAIMED WATER IN LANDSCAPING.

MATCHLINE STA. 118+00
SEE SHEET 87



1		50%PS&E		9/9/11
2		75%PS&E		2/28/12
3		90%PS&E		6/8/12
4		100%PS&E		10/5/12
REV	SYMBOL	DESCRIPTION OF CHANGE	RCE	DATE

APPROVED BY:



Kimley-Horn and Associates, Inc.
 © 2011 KIMLEY-HORN AND ASSOCIATES, INC.
 6800 Owensmouth Avenue, Suite 410, Los Angeles CA
 Tel (818) 227-2790 Fax (818) 227-2797

MICHAEL CHOI R.C.E. 67851 DATE

REVIEWED BY:

CHARMAINE YAMBABO DATE
 ASSOCIATE CIVIL ENGINEER

APPROVED BY:

RAMIRO ADEVA DATE
 CITY ENGINEER

CITY OF



AGOURA HILLS

AGOURA ROAD WIDENING
IRRIGATION PLANS IR-5

DRAWN BY: JP/RC
 CHECKED BY: JS/MC/SC
 KHA JOB NUMBER: 099083017

SHEET 87 OF 101

100% SUBMITTAL - OCTOBER 2012