

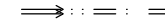

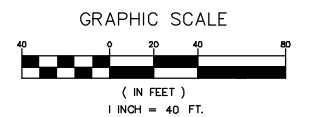
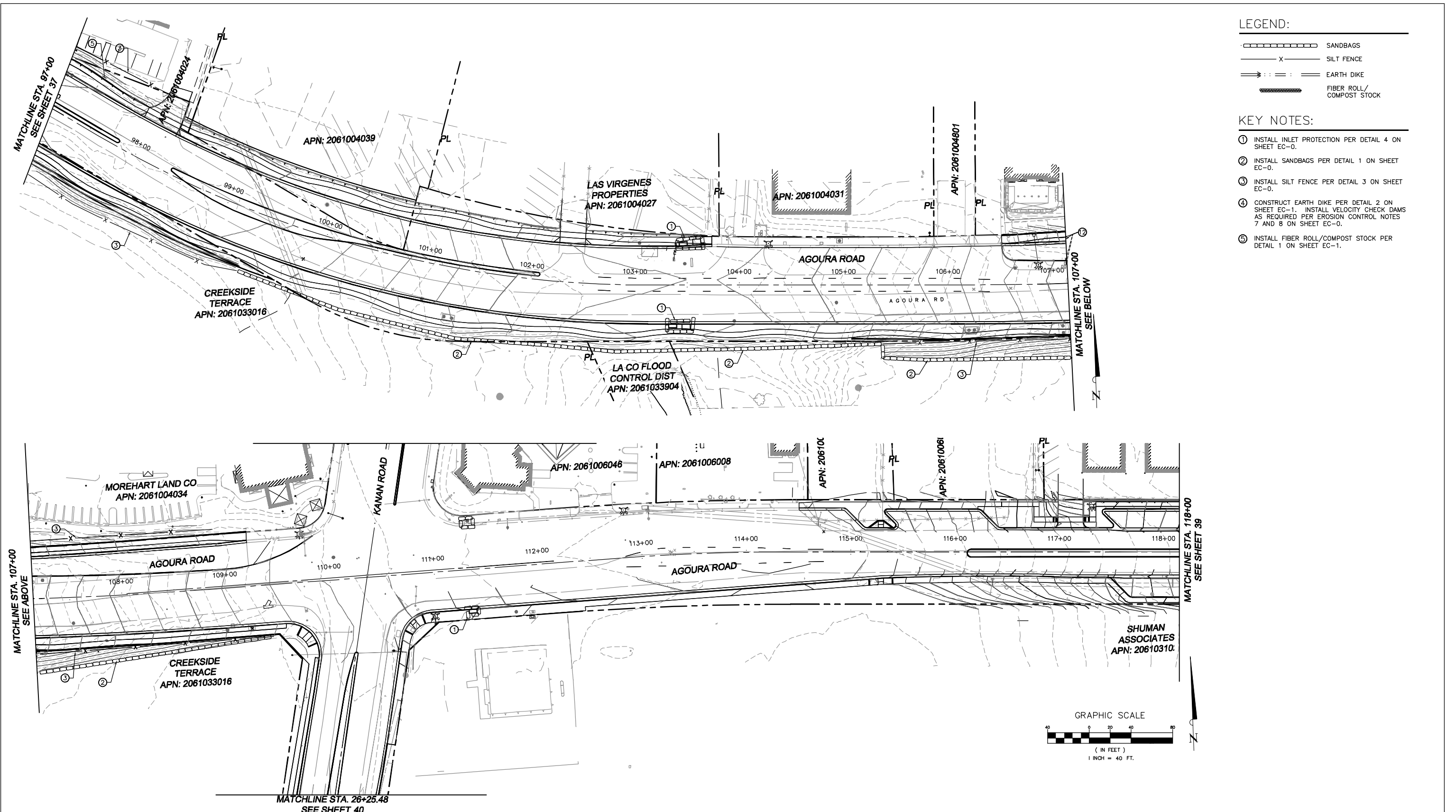


LEGEND:

-  SANDBAGS
-  SILT FENCE
-  EARTH DIKE
-  FIBER ROLL/  
COMPOST STOCK

KEY NOTES:

- ① INSTALL INLET PROTECTION PER DETAIL 4 ON SHEET EC-0.
- ② INSTALL SANDBAGS PER DETAIL 1 ON SHEET EC-0.
- ③ INSTALL SILT FENCE PER DETAIL 3 ON SHEET EC-0.
- ④ CONSTRUCT EARTH DIKE PER DETAIL 2 ON SHEET EC-1. INSTALL VELOCITY CHECK DAMS AS REQUIRED PER EROSION CONTROL NOTES 7 AND 8 ON SHEET EC-0.
- ⑤ INSTALL FIBER ROLL/COMPOST STOCK PER DETAIL 1 ON SHEET EC-1.



1		50%PS&E		9/9/11
2		75%PS&E		2/28/12
3		90%PS&E		6/8/12
4		100%PS&E		10/5/12
REV	SYMBOL	DESCRIPTION OF CHANGE	RCE	DATE

PREPARED BY:



**Kimley-Horn and Associates, Inc.**  
 © 2012 KIMLEY-HORN AND ASSOCIATES, INC.  
 6800 Owensmouth Avenue, Suite 410, Los Angeles CA  
 Tel (818) 227-2790 Fax (916) 608-0885

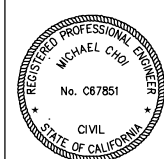
MICHAEL CHOI R.C.E. 67851 DATE

REVIEWED BY:

CHARMAINE YAMBAO ASSOCIATE CIVIL ENGINEER DATE

APPROVED BY:

RAMIRO ADEVA DIRECTOR OF PUBLIC WORKS/CITY ENGINEER DATE

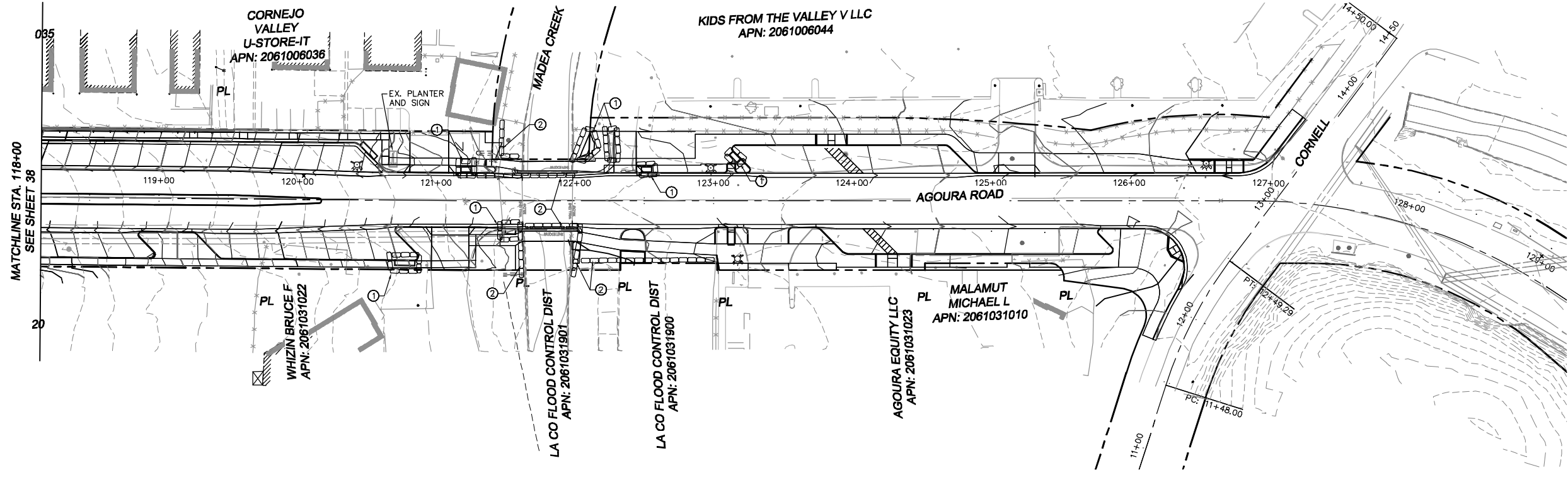


AGOURA ROAD WIDENING  
 EROSION CONTROL EC-6

DRAWN BY: RC CHECKED BY: JS/MC KHA JOB NUMBER: 099083017

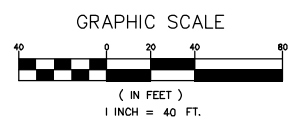
SHEET 38 OF 101

100% SUBMITTAL - OCTOBER 2012



- LEGEND:**
- SANDBAGS
  - SILT FENCE
  - EARTH DIKE
  - FIBER ROLL/COMPOST STOCK

- KEY NOTES:**
- ① INSTALL INLET PROTECTION PER DETAIL 4 ON SHEET EC-0.
  - ② INSTALL SANDBAGS PER DETAIL 1 ON SHEET EC-0.
  - ③ INSTALL SILT FENCE PER DETAIL 3 ON SHEET EC-0.
  - ④ CONSTRUCT EARTH DIKE PER DETAIL 2 ON SHEET EC-1. INSTALL VELOCITY CHECK DAMS AS REQUIRED PER EROSION CONTROL NOTES 7 AND 8 ON SHEET EC-0.
  - ⑤ INSTALL FIBER ROLL/COMPOST STOCK PER DETAIL 1 ON SHEET EC-1.



1		50%PS&E		9/9/11
2		75%PS&E		2/28/12
3		90%PS&E		6/8/12
4		100%PS&E		10/5/12
REV	SYMBOL	DESCRIPTION OF CHANGE	RCE	DATE

PREPARED BY:

**Kimley-Horn and Associates, Inc.**  
 © 2012 KIMLEY-HORN AND ASSOCIATES, INC.  
 6800 Owensmouth Avenue, Suite 410, Los Angeles CA  
 Tel (818) 227-2790 Fax (916) 608-0885

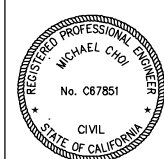
MICHAEL CHOI R.C.E. 67851 DATE

REVIEWED BY:

CHARMAINE YAMBAO ASSOCIATE CIVIL ENGINEER DATE

APPROVED BY:

RAMIRO ADEVA DIRECTOR OF PUBLIC WORKS/CITY ENGINEER DATE



CITY OF  
**AGOURA HILLS**


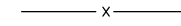
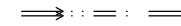

AGOURA ROAD WIDENING  
EROSION CONTROL EC-7

DRAWN BY: RC CHECKED BY: JS/MC KHA JOB NUMBER: 099083017

SHEET 39 OF 101

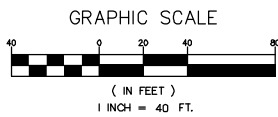
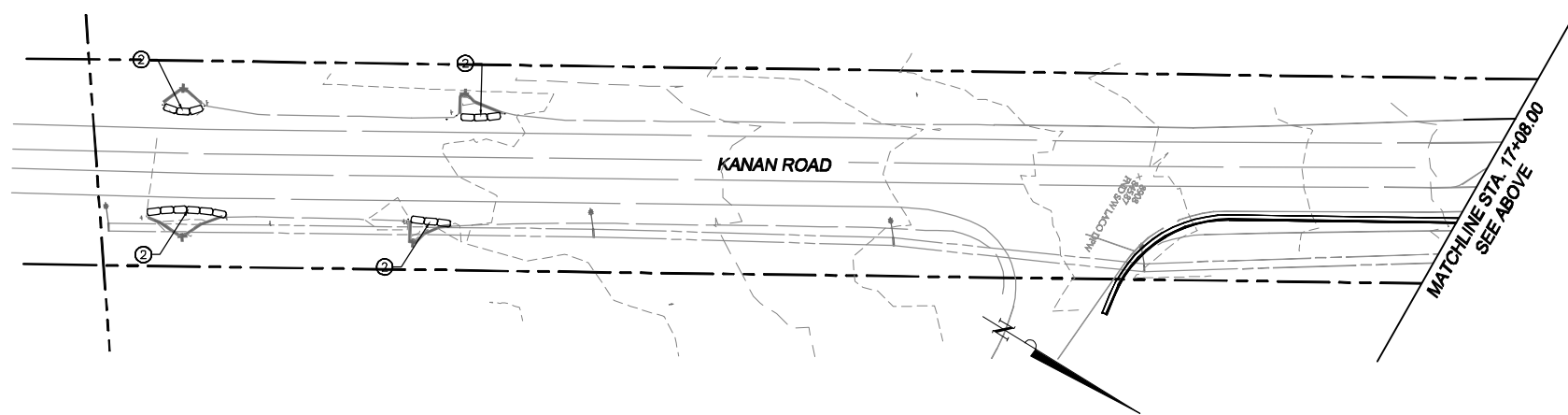
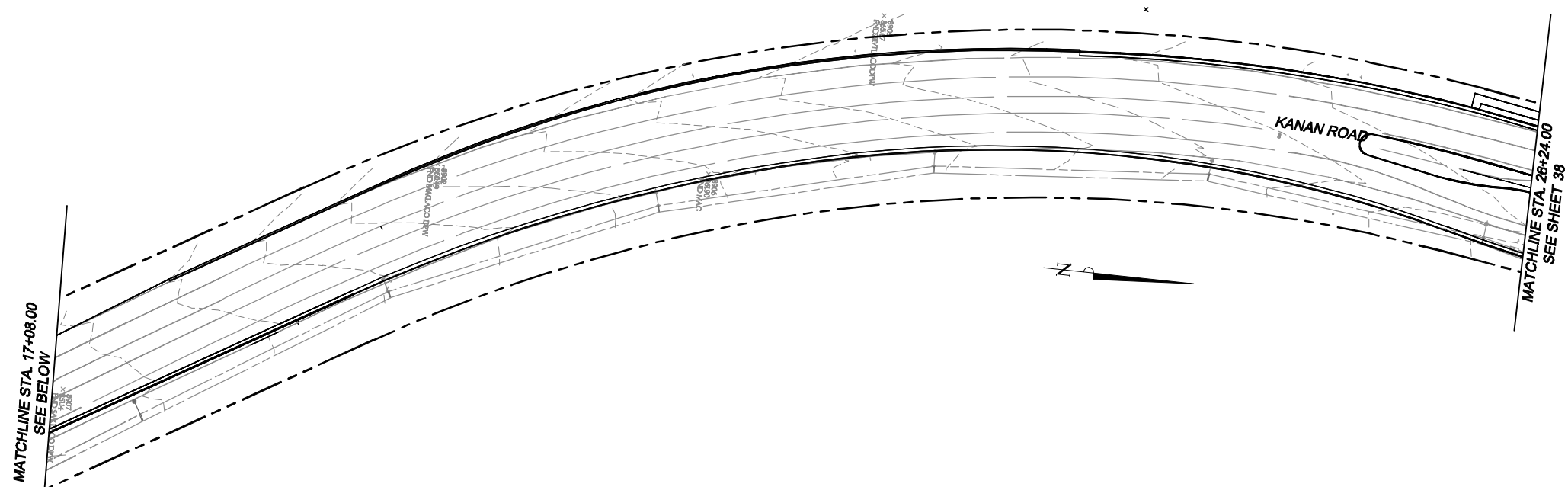
100% SUBMITTAL - OCTOBER 2012

LEGEND:

-  SANDBAGS
-  SILT FENCE
-  EARTH DIKE
-  FIBER ROLL/  
COMPOST STOCK

KEY NOTES:

- ① INSTALL INLET PROTECTION PER DETAIL 4 ON SHEET EC-0.
- ② INSTALL SANDBAGS PER DETAIL 1 ON SHEET EC-0.
- ③ INSTALL SILT FENCE PER DETAIL 3 ON SHEET EC-0.
- ④ CONSTRUCT EARTH DIKE PER DETAIL 2 ON SHEET EC-1. INSTALL VELOCITY CHECK DAMS AS REQUIRED PER EROSION CONTROL NOTES 7 AND 8 ON SHEET EC-0.
- ⑤ INSTALL FIBER ROLL/COMPOST STOCK PER DETAIL 1 ON SHEET EC-1.



1		50%PS&E		9/9/11
2		75%PS&E		2/28/12
3		90%PS&E		6/8/12
4		100%PS&E		10/5/12
REV	SYMBOL	DESCRIPTION OF CHANGE	RCE	DATE

PREPARED BY:

 **Kimley-Horn  
and Associates, Inc.**  
© 2012 KIMLEY-HORN AND ASSOCIATES, INC.  
6800 Owensmouth Avenue, Suite 410, Los Angeles CA  
Tel (818) 227-2790 Fax (916) 608-0885



REVIEWED BY:

CHARMAINE YAMBAO  
ASSOCIATE CIVIL ENGINEER

APPROVED BY:

RAMIRO ADEVA  
DIRECTOR OF PUBLIC WORKS/CITY ENGINEER



AGOURA ROAD WIDENING  
EROSION CONTROL EC-8

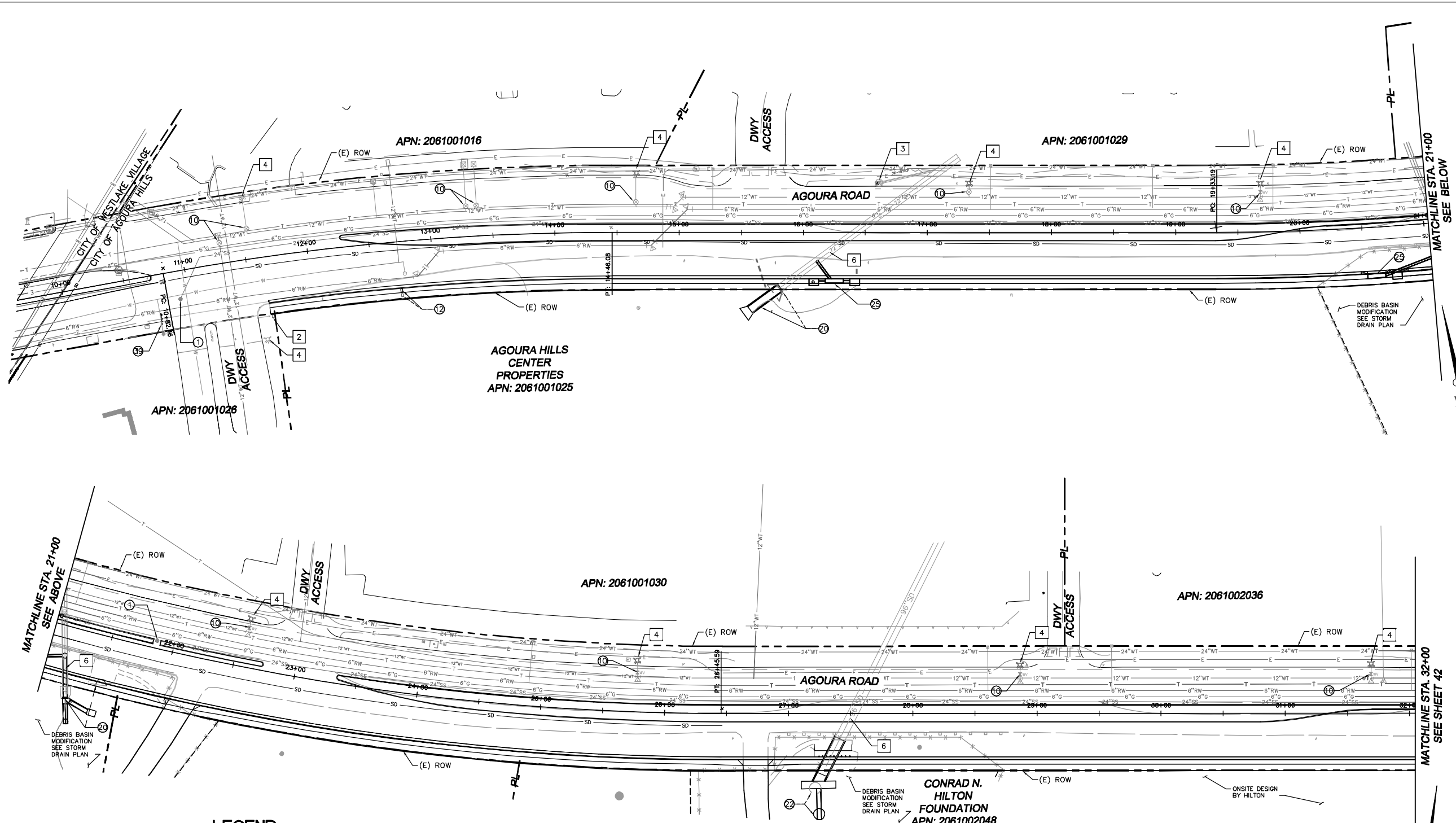
DRAWN BY:  
RC

CHECKED BY:  
JS/MC

KHA JOB NUMBER  
099083017

SHEET 40 OF 101

100% SUBMITTAL - OCTOBER 2012



**LEGEND**

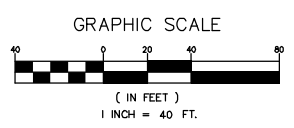
- PROTECT-IN-PLACE**
- 1 EX. STREET LIGHT AND POLE
  - 2 EX. UTILITY BOX
  - 3 EX. STORM DRAIN CATCH BASIN
  - 4 EX. FIRE HYDRANT
  - 5 EX. UTILITY VALVE
  - 6 EX. STORM DRAIN
  - 7 EX. MANHOLE
  - 8 EX. TELEPHONE MANHOLE AND WALL
  - 9 EX. TRAFFIC SIGNAL AND POLE
  - 10 EX. PULL BOX
  - 11 EX. POWER POLE
  - 12 EX. WATER METER
  - 13 EX. VENT
  - 14 EX. RECLAIMED WATER VALVE
  - 15 EX. COMM UTILITY
  - 16 EX. VAULT
- CONSTRUCTION/RELOCATION SANITARY SEWER**
- 1 ADJUST EX. SEWER MANHOLE TO GRADE
- WATER**
- 10 ADJUST EX. VALVE TO GRADE.
  - 11 RELOCATE EX. FIRE HYDRANT
  - 12 RELOCATE EX. WATER METER.
  - 13 ADJUST EX. METER TO GRADE.
  - 14 RELOCATE EX. WATER VALVE.
  - 15 ADJUST EX. FIRE HYDRANT TO GRADE. REMOVE EX. GUARD POSTS AS REQUIRED. CONTRACTOR TO VERIFY. MINIMUM DISTANCE FROM NEW CURB FACE TO HYDRANT.
  - 16 RELOCATE EX. BACKFLOW DEVICE.
  - 17 ADJUST EX. MANHOLE TO GRADE
- STORM DRAIN**
- 20 EX. OUTLET STRUCTURE TO BE MODIFIED. SEE STORM DRAIN PLANS.
  - 21 ADJUST EX. STORM DRAIN MANHOLE TO GRADE.
  - 22 EX. DEBRIS BASIN AND OUTLET STRUCTURE TO BE MODIFIED. SEE STORM DRAIN PLANS.
  - 23 EX. CATCH BASIN TO BE RELOCATED. SEE STORM DRAIN PLANS.
  - 24 EX. OZONE TREATMENT FACILITY TO BE RELOCATED. COORDINATE FINAL LOCATION WITH CITY.
  - 25 NEW CATCH BASIN/INLET PER STORM DRAIN PLAN.
- ELECTRICAL/TELEPHONE/CABLE**
- 30 ADJUST EX. TELEPHONE VAULT TO GRADE. COORDINATE WORK WITH TELEPHONE COMPANY. REMOVE BOLLARDS OR WALLS AS REQUIRED.
  - 31 ADJUST EX. TELEPHONE MANHOLE TO GRADE.
  - 32 ADJUST EX. UTILITY VALVE TO GRADE.
  - 33 ADJUST EX. ELECTRIC MANHOLE TO GRADE.
  - 34 RELOCATE EX. ELECTRIC MANHOLE. COORDINATE RELOCATION WITH SCE.
  - 35 EX. POWER POLE TO BE REMOVED AND POWER LINES TO BE UNDERGROUNDED. COORDINATE UNDERGROUNDING WITH SCE.
  - 36 ADJUST EX. UTILITY BOX TO GRADE.
  - 37 RELOCATE TRAFFIC SIGNAL AND STREET LIGHT SEE TRAFFIC SIGNAL AND STREET LIGHTING PLANS.
  - 38 RELOCATE EX. UTILITY BOX.
  - 39 SEE LIGHTING PLAN FOR LIGHTING MODIFICATION OR REPLACEMENT.
- GAS**
- 40 ADJUST EX. VALVE TO GRADE.

**LEGEND**

- W — W — W — EX. WATER SUPPLY
- FW — FW — FW — EX. FIRE WATER LINE
- RW — RW — RW — EX. RECLAIMED WATER LINE
- G — G — G — EX. GAS LINE
- SD — SD — SD — EX. STORM DRAIN
- SS — SS — SS — EX. SANITARY SEWER LINE
- E — E — E — EX. ELECTRICAL CONDUIT
- T — T — T — EX. TELECOMMUNICATIONS LINE
- CTV — CTV — CTV — EX. CAT 5 TELECOMMUNICATIONS LINE
- WT — WT — WT — EX. OVERHEAD ELECTRIC LINE
- WT — WT — WT — EX. WATER LINE
- OH — PROPOSED OVERHEAD ELECTRIC LINE
- FW — PROPOSED FIRE WATER LINE
- — — — EX. RIGHT OF WAY
- — — — PROPOSED RIGHT OF WAY
- ▲ EXISTING THRUST BLOCK
- — — — PROPOSED UNDERGROUND LINES
- PROPOSED VAULT/UTILITY BOX

**NOTES:**

1. SEE STORM DRAIN PLANS (SD-1 TO SD-12) FOR STORM DRAIN DESIGN.
2. ALL UTILITIES TO BE PROTECTED IN PLACE UNLESS OTHERWISE NOTED.
3. UTILITIES SHOWN ARE EXISTING UNLESS OTHERWISE NOTED.
4. THESE PLANS REFLECT PROPOSED WORK FOR UTILITIES ONLY.
5. LOCATION OF UNDERGROUND UTILITIES SHOWN ARE APPROXIMATE BASED ON AVAILABLE RECORD PLANS AND ARE TO BE FIELD VERIFIED BY THE CONTRACTOR PRIOR TO THE START OF CONSTRUCTION.
6. EXISTING SURFACE UTILITY STRUCTURES SHOWN TO BE ADJUSTED BETWEEN STATION 50+00 AND 70+56.60 ARE BASED ON AERIAL TOPOGRAPHY ONLY AND MAY NOT BE ACCURATE. CONTRACTOR SHALL FIELD VERIFY QUANTITY AND LOCATION PRIOR TO START OF CONSTRUCTION.
7. CONTRACTOR IS CAUTIONED THAT THE PROJECT CONTAINS POTENTIAL HIGH RISK UTILITIES INCLUDING GAS LINES 6" OR GREATER AND ELECTRIC SERVICES THAT ARE 300 VOLTS OR GREATER.
8. CONTRACTOR TO RELOCATE EXISTING BLOW OFF VALVES AND STRUCTURES FROM RECENTLY INSTALLED LVMWD'S BACKBONE WATER MAIN INSTALLATION.



**811**  
 Know what's below.  
 Call before you dig.  
 DIAL TOLL FREE 8 1 1  
 AT LEAST TWO DAYS BEFORE YOU DIG  
 UNDERGROUND SERVICE ALERT OF SOUTHERN CALIFORNIA

REV	SYMBOL	DESCRIPTION OF CHANGE	RCE	DATE
1		50%PS&E		9/9/11
2		75%PS&E		2/28/12
3		90%PS&E		6/8/12
4		100%PS&E		10/5/12

PREPARED BY:  
  
 © 2012 KIMLEY-HORN AND ASSOCIATES, INC.  
 6800 Owensmouth Avenue, Suite 410, Los Angeles CA  
 Tel (818) 227-2790 Fax (916) 608-0885

MICHAEL CHOI R.C.E. 67851 DATE

REVIEWED BY:  
 CHARMINE YAMBAO DATE  
 ASSOCIATE CIVIL ENGINEER

APPROVED BY:  
 RAMIRO ADEVA DATE  
 DIRECTOR OF PUBLIC WORKS/CITY ENGINEER

CITY OF  
  
**AGOURA HILLS**

AGOURA ROAD WIDENING  
 UTILITY PLANS U-1

DRAWN BY: RC  
 CHECKED BY: JS/MC  
 KHA JOB NUMBER: 099083017  
 SHEET 41 OF 101

100% SUBMITTAL - OCTOBER 2012

**LEGEND**

**PROTECT-IN-PLACE**

- 1 EX. STREET LIGHT AND POLE
- 2 EX. UTILITY BOX
- 3 EX. STORM DRAIN CATCH BASIN
- 4 EX. FIRE HYDRANT
- 5 EX. UTILITY VALVE
- 6 EX. STORM DRAIN
- 7 EX. MANHOLE
- 8 EX. TELEPHONE MANHOLE AND WALL
- 9 EX. TRAFFIC SIGNAL AND POLE
- 10 EX. PULL BOX
- 11 EX. POWER POLE
- 12 EX. WATER METER
- 13 EX. VENT
- 14 EX. RECLAIMED WATER VALVE
- 15 EX. COMM UTILITY
- 16 EX. VAULT

**CONSTRUCTION/RELOCATION  
SANITARY SEWER**

- 1 ADJUST EX. SEWER MANHOLE TO GRADE

**WATER**

- 10 ADJUST EX. VALVE TO GRADE.
- 11 RELOCATE EX. FIRE HYDRANT
- 12 RELOCATE EX. WATER METER.
- 13 ADJUST EX. METER TO GRADE.
- 14 RELOCATE EX. WATER VALVE.
- 15 ADJUST EX. FIRE HYDRANT TO GRADE. REMOVE EX. GUARD POSTS AS REQUIRED. CONTRACTOR TO VERIFY. MINIMUM DISTANCE FROM NEW CURB FACE TO HYDRANT.
- 16 RELOCATE EX. BACKFLOW DEVICE.
- 17 ADJUST EX. MANHOLE TO GRADE

**STORM DRAIN**

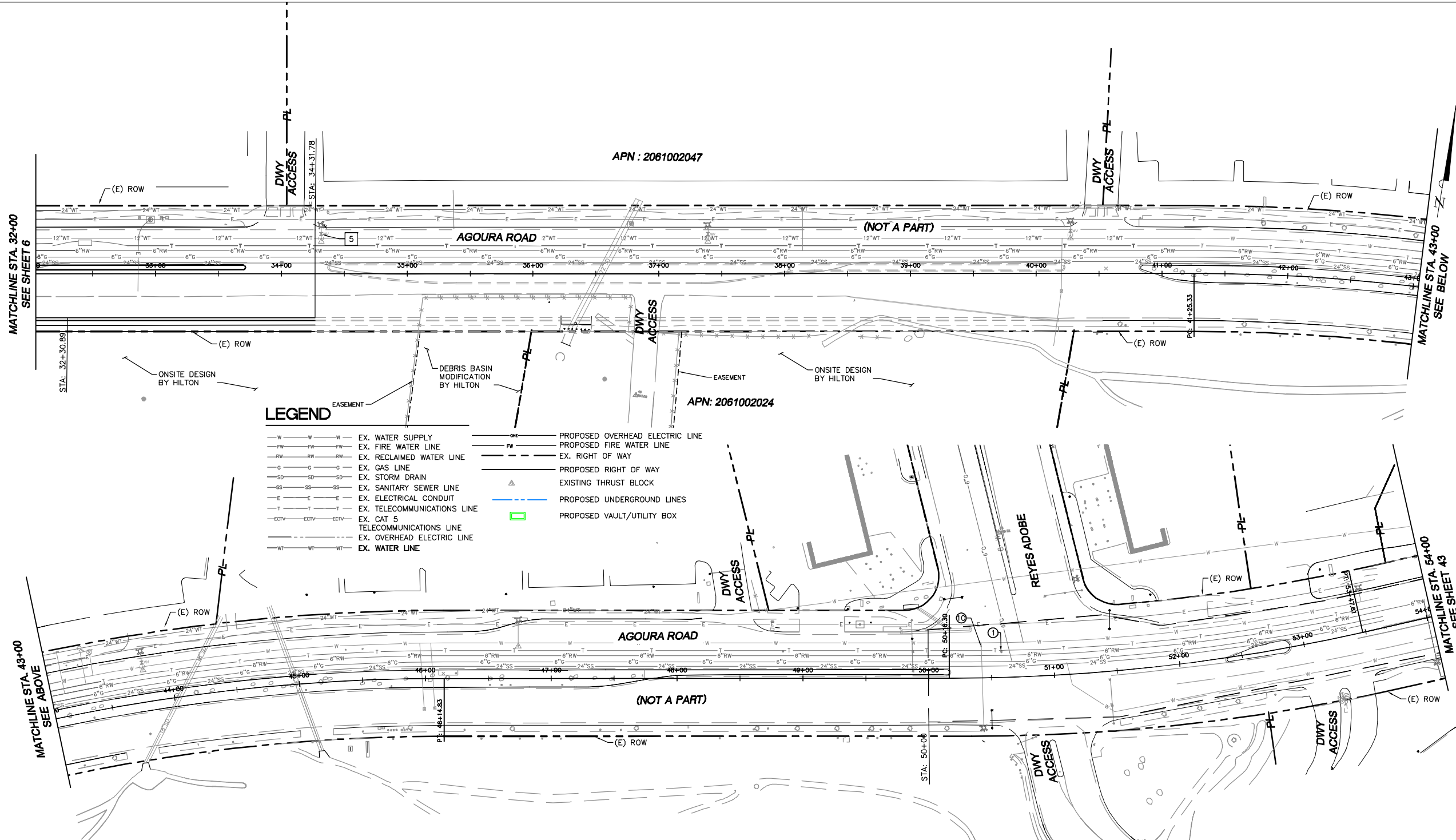
- 20 EX. OUTLET STRUCTURE TO BE MODIFIED. SEE STORM DRAIN PLANS.
- 21 ADJUST EX. STORM DRAIN MANHOLE TO GRADE.
- 22 EX. DEBRIS BASIN AND OUTLET STRUCTURE TO BE MODIFIED. SEE STORM DRAIN PLANS.
- 23 EX. CATCH BASIN TO BE RELOCATED. SEE STORM DRAIN PLANS.
- 24 EX. OZONE TREATMENT FACILITY TO BE RELOCATED. COORDINATE FINAL LOCATION WITH CITY.
- 25 NEW CATCH BASIN/INLET PER STORM DRAIN PLAN.

**ELECTRICAL/TELEPHONE/CABLE**

- 30 ADJUST EX. TELEPHONE VAULT TO GRADE. COORDINATE WORK WITH TELEPHONE COMPANY. REMOVE BOLLARDS OR WALLS AS REQUIRED.
- 31 ADJUST EX. TELEPHONE MANHOLE TO GRADE.
- 32 ADJUST EX. UTILITY VALVE TO GRADE.
- 33 ADJUST EX. ELECTRIC MANHOLE TO GRADE.
- 34 RELOCATE EX. ELECTRIC MANHOLE. COORDINATE RELOCATION WITH SCE.
- 35 EX. POWER POLE TO BE REMOVED AND POWER LINES TO BE UNDERGROUNDED. COORDINATE UNDERGROUNDING WITH SCE.
- 36 ADJUST EX. UTILITY BOX TO GRADE.
- 37 RELOCATE TRAFFIC SIGNAL AND STREET LIGHT SEE TRAFFIC SIGNAL AND STREET LIGHTING PLANS.
- 38 RELOCATE EX. UTILITY BOX.
- 39 SEE LIGHTING PLAN FOR LIGHTING MODIFICATION OR REPLACEMENT.

**GAS**

- 40 ADJUST EX. VALVE TO GRADE.



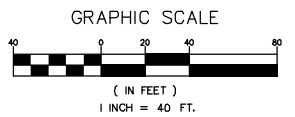
**LEGEND**

- W-W-W EX. WATER SUPPLY
- FW-FW-FW EX. FIRE WATER LINE
- RW-RW-RW EX. RECLAIMED WATER LINE
- G-G-G EX. GAS LINE
- SD-SD-SD EX. STORM DRAIN
- SS-SS-SS EX. SANITARY SEWER LINE
- E-E-E EX. ELECTRICAL CONDUIT
- T-T-T EX. TELECOMMUNICATIONS LINE
- ECTV-ECTV-ECTV EX. CAT 5 TELECOMMUNICATIONS LINE
- WT-WT-WT EX. OVERHEAD ELECTRIC LINE
- WT-WT-WT EX. WATER LINE
- ONE PROPOSED OVERHEAD ELECTRIC LINE
- FW PROPOSED FIRE WATER LINE
- EX. RIGHT OF WAY
- PROPOSED RIGHT OF WAY
- EXISTING THRUST BLOCK
- PROPOSED UNDERGROUND LINES
- PROPOSED VAULT/UTILITY BOX

**NOTES:**

1. SEE STORM DRAIN PLANS (SD-1 TO SD-12) FOR STORM DRAIN DESIGN.
2. ALL UTILITIES TO BE PROTECTED IN PLACE UNLESS OTHERWISE NOTED.
3. UTILITIES SHOWN ARE EXISTING UNLESS OTHERWISE NOTED.
4. THESE PLANS REFLECT PROPOSED WORK FOR UTILITIES ONLY.
5. LOCATION OF UNDERGROUND UTILITIES SHOWN ARE APPROXIMATE BASED ON AVAILABLE RECORD PLANS AND ARE TO BE FIELD VERIFIED BY THE CONTRACTOR PRIOR TO THE START OF CONSTRUCTION.
6. EXISTING SURFACE UTILITY STRUCTURES SHOWN TO BE ADJUSTED BETWEEN STATION 50+00 AND 70+56.60 ARE BASED ON AERIAL TOPOGRAPHY ONLY AND MAY NOT BE ACCURATE. CONTRACTOR SHALL FIELD VERIFY QUANTITY AND LOCATION PRIOR TO START OF CONSTRUCTION.
7. CONTRACTOR IS CAUTIONED THAT THE PROJECT CONTAINS POTENTIAL HIGH RISK UTILITIES INCLUDING GAG LINES 6" OR GREATER AND ELECTRIC SERVICES THAT ARE 300 VOLTS OR GREATER.
8. CONTRACTOR TO RELOCATE EXISTING BLOW OFF VALVES AND STRUCTURES FROM RECENTLY INSTALLED LVMWD'S BACKBONE WATER MAIN INSTALLATION.

**811**  
DIAL TOLL FREE  
8 1 1  
Know what's below.  
Call before you dig.  
AT LEAST TWO DAYS  
BEFORE YOU DIG  
UNDERGROUND SERVICE ALERT OF SOUTHERN CALIFORNIA



1		50%PS&E		9/9/11
2		75%PS&E		2/28/12
3		90%PS&E		6/8/12
4		100%PS&E		10/5/12
REV	SYMBOL	DESCRIPTION OF CHANGE	RCE	DATE

PREPARED BY:  
**Kimley-Horn and Associates, Inc.**  
© 2012 KIMLEY-HORN AND ASSOCIATES, INC.  
6800 Owensmouth Avenue, Suite 410, Los Angeles CA  
Tel (818) 227-2790 Fax (916) 608-0885

MICHAEL CHOI R.C.E. 67851 DATE

REVIEWED BY:  
CHARMAINE YAMBAO DATE  
ASSOCIATE CIVIL ENGINEER

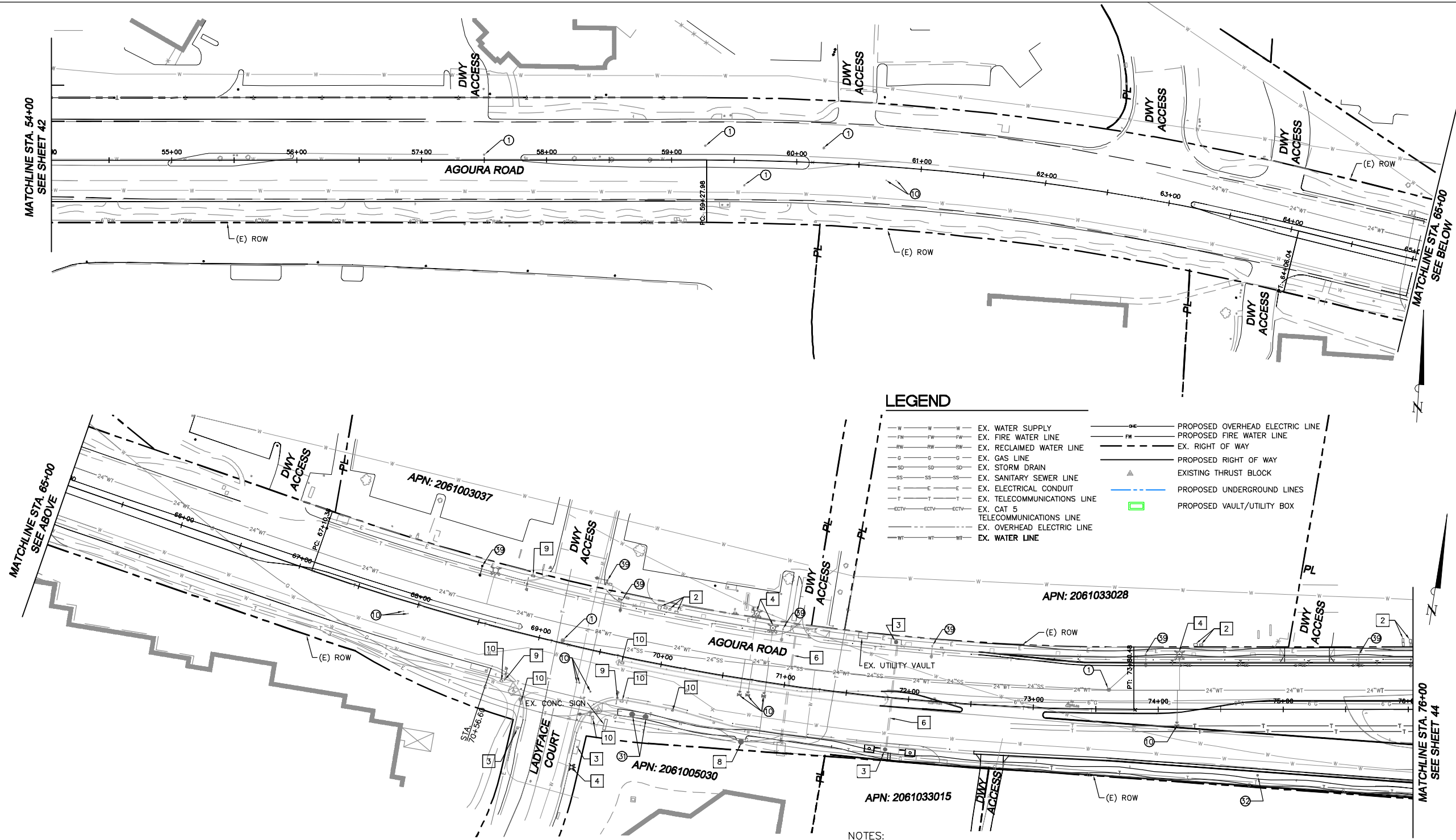
APPROVED BY:  
RAMIRO ADEVA DATE  
DIRECTOR OF PUBLIC WORKS/CITY ENGINEER

CITY OF  
**AGOURA HILLS**

AGOURA ROAD WIDENING  
UTILITY PLANS U-2

DRAWN BY: RC  
CHECKED BY: JS/MC  
KHA JOB NUMBER: 099083017  
SHEET 42 OF 101

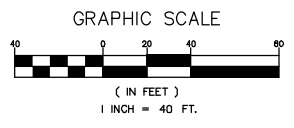
100% SUBMITTAL - OCTOBER 2012



- ### LEGEND
- PROTECT-IN-PLACE**
- 1 EX. STREET LIGHT AND POLE
  - 2 EX. UTILITY BOX
  - 3 EX. STORM DRAIN CATCH BASIN
  - 4 EX. FIRE HYDRANT
  - 5 EX. UTILITY VALVE
  - 6 EX. STORM DRAIN
  - 7 EX. MANHOLE
  - 8 EX. TELEPHONE MANHOLE AND WALL
  - 9 EX. TRAFFIC SIGNAL AND POLE
  - 10 EX. PULL BOX
  - 11 EX. POWER POLE
  - 12 EX. WATER METER
  - 13 EX. VENT
  - 14 EX. RECLAIMED WATER VALVE
  - 15 EX. COMM UTILITY
  - 16 EX. VAULT
- CONSTRUCTION/RELOCATION**
- SANITARY SEWER**
- 1 ADJUST EX. SEWER MANHOLE TO GRADE
- WATER**
- 10 ADJUST EX. VALVE TO GRADE.
  - 11 RELOCATE EX. FIRE HYDRANT
  - 12 RELOCATE EX. WATER METER.
  - 13 ADJUST EX. METER TO GRADE.
  - 14 RELOCATE EX. WATER VALVE.
  - 15 ADJUST EX. FIRE HYDRANT TO GRADE. REMOVE EX. GUARD POSTS AS REQUIRED. CONTRACTOR TO VERIFY. MINIMUM DISTANCE FROM NEW CURB FACE TO HYDRANT.
  - 16 RELOCATE EX. BACKFLOW DEVICE.
  - 17 ADJUST EX. MANHOLE TO GRADE
- STORM DRAIN**
- 21 EX. OUTLET STRUCTURE TO BE MODIFIED. SEE STORM DRAIN PLANS.
  - 22 ADJUST EX. STORM DRAIN MANHOLE TO GRADE.
  - 23 EX. DEBRIS BASIN AND OUTLET STRUCTURE TO BE MODIFIED. SEE STORM DRAIN PLANS.
  - 24 EX. CATCH BASIN TO BE RELOCATED. SEE STORM DRAIN PLANS.
  - 25 EX. OZONE TREATMENT FACILITY TO BE RELOCATED. COORDINATE FINAL LOCATION WITH CITY.
  - 26 NEW CATCH BASIN/INLET PER STORM DRAIN PLAN.
- ELECTRICAL/TELEPHONE/CABLE**
- 31 ADJUST EX. TELEPHONE VAULT TO GRADE. COORDINATE WORK WITH TELEPHONE COMPANY. REMOVE BOLLARDS OR WALLS AS REQUIRED.
  - 32 ADJUST EX. TELEPHONE MANHOLE TO GRADE.
  - 33 ADJUST EX. UTILITY VALVE TO GRADE.
  - 34 ADJUST EX. ELECTRIC MANHOLE TO GRADE.
  - 35 RELOCATE EX. ELECTRIC MANHOLE. COORDINATE RELOCATION WITH SCE.
  - 36 EX. POWER POLE TO BE REMOVED AND POWER LINES TO BE UNDERGROUNDED. COORDINATE UNDERGROUNDING WITH SCE.
  - 37 ADJUST EX. UTILITY BOX TO GRADE.
  - 38 RELOCATE TRAFFIC SIGNAL AND STREET LIGHT SEE TRAFFIC SIGNAL AND STREET LIGHTING PLANS.
  - 39 RELOCATE EX. UTILITY BOX.
  - 40 SEE LIGHTING PLAN FOR LIGHTING MODIFICATION OR REPLACEMENT.
- GAS**
- 41 ADJUST EX. VALVE TO GRADE.

- ### LEGEND
- W — W — W — EX. WATER SUPPLY
  - FW — FW — FW — EX. FIRE WATER LINE
  - RW — RW — RW — EX. RECLAIMED WATER LINE
  - G — G — G — EX. GAS LINE
  - SD — SD — SD — EX. STORM DRAIN
  - SS — SS — SS — EX. SANITARY SEWER LINE
  - E — E — E — EX. ELECTRICAL CONDUIT
  - T — T — T — EX. TELECOMMUNICATIONS LINE
  - ECTV — ECTV — ECTV — EX. CAT 5 TELECOMMUNICATIONS LINE
  - WT — WT — WT — EX. OVERHEAD ELECTRIC LINE
  - WT — WT — WT — EX. WATER LINE
  - OE — PROPOSED OVERHEAD ELECTRIC LINE
  - FW — PROPOSED FIRE WATER LINE
  - RW — PROPOSED RECLAIMED WATER LINE
  - G — PROPOSED GAS LINE
  - SD — PROPOSED STORM DRAIN
  - SS — PROPOSED SANITARY SEWER LINE
  - E — PROPOSED ELECTRICAL CONDUIT
  - T — PROPOSED TELECOMMUNICATIONS LINE
  - ECTV — PROPOSED CAT 5 TELECOMMUNICATIONS LINE
  - WT — PROPOSED OVERHEAD ELECTRIC LINE
  - WT — PROPOSED WATER LINE
  - PL — PROPOSED RIGHT OF WAY
  - E ROW — EXISTING RIGHT OF WAY
  - EX. THRUST BLOCK — EXISTING THRUST BLOCK
  - UG — PROPOSED UNDERGROUND LINES
  - V — PROPOSED VAULT/UTILITY BOX

- ### NOTES:
- SEE STORM DRAIN PLANS (SD-1 TO SD-12) FOR STORM DRAIN DESIGN.
  - ALL UTILITIES TO BE PROTECTED IN PLACE UNLESS OTHERWISE NOTED.
  - UTILITIES SHOWN ARE EXISTING UNLESS OTHERWISE NOTED.
  - THESE PLANS REFLECT PROPOSED WORK FOR UTILITIES ONLY.
  - LOCATION OF UNDERGROUND UTILITIES SHOWN ARE APPROXIMATE BASED ON AVAILABLE RECORD PLANS AND ARE TO BE FIELD VERIFIED BY THE CONTRACTOR PRIOR TO THE START OF CONSTRUCTION.
  - EXISTING SURFACE UTILITY STRUCTURES SHOWN TO BE ADJUSTED BETWEEN STATION 50+00 AND 70+56.60 ARE BASED ON AERIAL TOPOGRAPHY ONLY AND MAY NOT BE ACCURATE. CONTRACTOR SHALL FIELD VERIFY QUANTITY AND LOCATION PRIOR TO START OF CONSTRUCTION.
  - CONTRACTOR IS CAUTIONED THAT THE PROJECT CONTAINS POTENTIAL HIGH RISK UTILITIES INCLUDING GAS LINES 6" OR GREATER AND ELECTRIC SERVICES THAT ARE 300 VOLTS OR GREATER.
  - CONTRACTOR TO RELOCATE EXISTING BLOW OFF VALVES AND STRUCTURES FROM RECENTLY INSTALLED LVMWD'S BACKBONE WATER MAIN INSTALLATION.



**811**  
DIAL TOLL FREE  
8 1 1

Know what's below.  
Call before you dig.

AT LEAST TWO DAYS  
BEFORE YOU DIG

UNDERGROUND SERVICE ALERT OF SOUTHERN CALIFORNIA

REV	SYMBOL	DESCRIPTION OF CHANGE	RCE	DATE
1		50%PS&E		9/9/11
2		75%PS&E		2/28/12
3		90%PS&E		6/8/12
4		100%PS&E		10/5/12

PREPARED BY:

**Kimley-Horn and Associates, Inc.**  
© 2012 KIMLEY-HORN AND ASSOCIATES, INC.  
6800 Owensmouth Avenue, Suite 410, Los Angeles CA  
Tel (818) 227-2790 Fax (916) 608-0885

MICHAEL CHOI R.C.E. 67851 DATE

REVIEWED BY:

CHARMAINE YAMBAO DATE  
ASSOCIATE CIVIL ENGINEER

APPROVED BY:

RAMIRO ADEVA DATE  
DIRECTOR OF PUBLIC WORKS/CITY ENGINEER

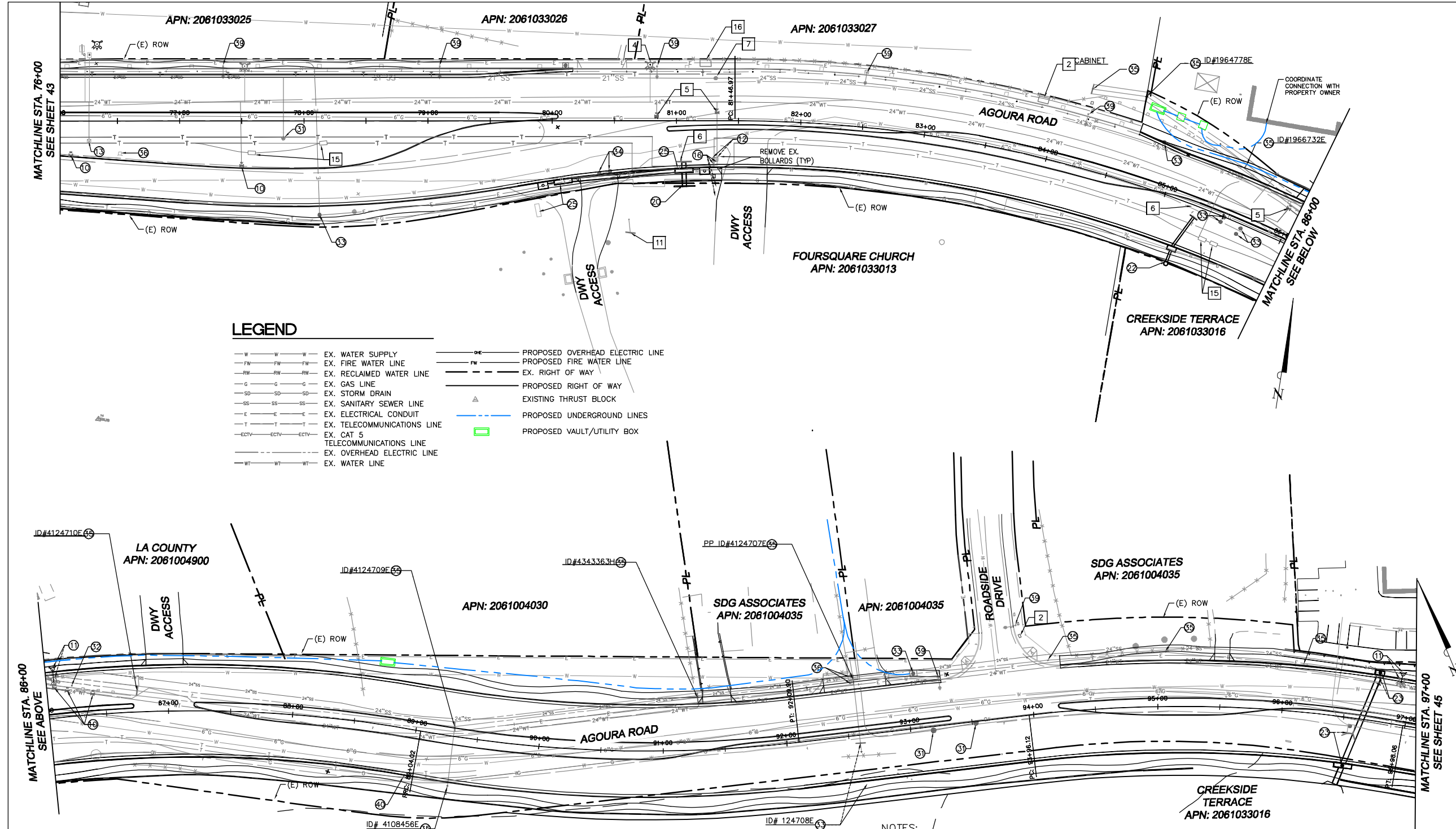
CITY OF  
**AGOURA HILLS**

AGOURA ROAD WIDENING  
UTILITY PLANS U-3

DRAWN BY: RC  
CHECKED BY: JS/MC  
KHA JOB NUMBER: 099083017

SHEET 43 OF 101

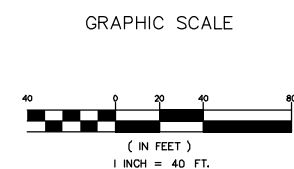
100% SUBMITTAL - OCTOBER 2012



- LEGEND**
- PROTECT-IN-PLACE**
- 1 EX. STREET LIGHT AND POLE
  - 2 EX. UTILITY BOX
  - 3 EX. STORM DRAIN CATCH BASIN
  - 4 EX. FIRE HYDRANT
  - 5 EX. UTILITY VALVE
  - 6 EX. STORM DRAIN
  - 7 EX. MANHOLE
  - 8 EX. TELEPHONE MANHOLE AND WALL
  - 9 EX. TRAFFIC SIGNAL AND POLE
  - 10 EX. PULL BOX
  - 11 EX. POWER POLE
  - 12 EX. WATER METER
  - 13 EX. VENT
  - 14 EX. RECLAIMED WATER VALVE
  - 15 EX. COMM UTILITY
  - 16 EX. VAULT
- CONSTRUCTION/RELOCATION SANITARY SEWER**
- 1 ADJUST EX. SEWER MANHOLE TO GRADE
- WATER**
- 10 ADJUST EX. VALVE TO GRADE.
  - 11 RELOCATE EX. FIRE HYDRANT
  - 12 RELOCATE EX. WATER METER.
  - 13 ADJUST EX. METER TO GRADE.
  - 14 RELOCATE EX. WATER VALVE.
  - 15 ADJUST EX. FIRE HYDRANT TO GRADE. REMOVE EX. GUARD POSTS AS REQUIRED. CONTRACTOR TO VERIFY. MINIMUM DISTANCE FROM NEW CURB FACE TO HYDRANT.
  - 16 RELOCATE EX. BACKFLOW DEVICE.
  - 17 ADJUST EX. MANHOLE TO GRADE
- STORM DRAIN**
- 21 EX. OUTLET STRUCTURE TO BE MODIFIED. SEE STORM DRAIN PLANS.
  - 22 ADJUST EX. STORM DRAIN MANHOLE TO GRADE.
  - 23 EX. DEBRIS BASIN AND OUTLET STRUCTURE TO BE MODIFIED. SEE STORM DRAIN PLANS.
  - 24 EX. CATCH BASIN TO BE RELOCATED. SEE STORM DRAIN PLANS.
  - 25 EX. OZONE TREATMENT FACILITY TO BE RELOCATED. COORDINATE FINAL LOCATION WITH CITY.
  - 26 NEW CATCH BASIN/INLET PER STORM DRAIN PLAN.
- ELECTRICAL/TELEPHONE/CABLE**
- 51 ADJUST EX. TELEPHONE VAULT TO GRADE. COORDINATE WORK WITH TELEPHONE COMPANY. REMOVE BOLLARDS OR WALLS AS REQUIRED.
  - 52 ADJUST EX. TELEPHONE MANHOLE TO GRADE.
  - 53 ADJUST EX. UTILITY VALVE TO GRADE.
  - 54 ADJUST EX. ELECTRIC MANHOLE TO GRADE.
  - 55 RELOCATE EX. ELECTRIC MANHOLE. COORDINATE RELOCATION WITH SCE.
  - 56 EX. POWER POLE TO BE REMOVED AND POWER LINES TO BE UNDERGROUNDED. COORDINATE UNDERGROUNDING WITH SCE.
  - 57 ADJUST EX. UTILITY BOX TO GRADE.
  - 58 RELOCATE TRAFFIC SIGNAL AND STREET LIGHT SEE TRAFFIC SIGNAL AND STREET LIGHTING PLANS.
  - 59 RELOCATE EX. UTILITY BOX.
  - 60 SEE LIGHTING PLAN FOR LIGHTING MODIFICATION OR REPLACEMENT.
- GAS**
- 40 ADJUST EX. VALVE TO GRADE.

- LEGEND**
- W — W — W — EX. WATER SUPPLY
  - FW — FW — FW — EX. FIRE WATER LINE
  - RW — RW — RW — EX. RECLAIMED WATER LINE
  - G — G — G — EX. GAS LINE
  - SD — SD — SD — EX. STORM DRAIN
  - SS — SS — SS — EX. SANITARY SEWER LINE
  - E — E — E — EX. ELECTRICAL CONDUIT
  - T — T — T — EX. TELECOMMUNICATIONS LINE
  - ECTV — ECTV — ECTV — EX. CAT 5 TELECOMMUNICATIONS LINE
  - WT — WT — WT — EX. OVERHEAD ELECTRIC LINE
  - WT — WT — WT — EX. WATER LINE
  - OC — PROPOSED OVERHEAD ELECTRIC LINE
  - FC — PROPOSED FIRE WATER LINE
  - — — — EX. RIGHT OF WAY
  - — — — PROPOSED RIGHT OF WAY
  - — — — EXISTING THRUST BLOCK
  - — — — PROPOSED UNDERGROUND LINES
  - — — — PROPOSED VAULT/UTILITY BOX

**811**  
 DIAL TOLL FREE  
 8 1 1  
 Know what's below. Call before you dig.  
 AT LEAST TWO DAYS BEFORE YOU DIG  
 UNDERGROUND SERVICE ALERT OF SOUTHERN CALIFORNIA



- NOTES:**
- SEE STORM DRAIN PLANS (SD-1 TO SD-12) FOR STORM DRAIN DESIGN.
  - ALL UTILITIES TO BE PROTECTED IN PLACE UNLESS OTHERWISE NOTED.
  - UTILITIES SHOWN ARE EXISTING UNLESS OTHERWISE NOTED.
  - THESE PLANS REFLECT PROPOSED WORK FOR UTILITIES ONLY.
  - LOCATION OF UNDERGROUND UTILITIES SHOWN ARE APPROXIMATE BASED ON AVAILABLE RECORD PLANS AND ARE TO BE FIELD VERIFIED BY THE CONTRACTOR PRIOR TO THE START OF CONSTRUCTION.
  - EXISTING SURFACE UTILITY STRUCTURES SHOWN TO BE ADJUSTED BETWEEN STATION 50+00 AND 70+56.60 ARE BASED ON AERIAL TOPOGRAPHY ONLY AND MAY NOT BE ACCURATE. CONTRACTOR SHALL FIELD VERIFY QUANTITY AND LOCATION PRIOR TO START OF CONSTRUCTION.
  - CONTRACTOR IS CAUTIONED THAT THE PROJECT CONTAINS POTENTIAL HIGH RISK UTILITIES INCLUDING GAG LINES 6" OR GREATER AND ELECTRIC SERVICES THAT ARE 300 VOLTS OR GREATER.
  - CONTRACTOR TO RELOCATE EXISTING BLOW OFF VALVES AND STRUCTURES FROM RECENTLY INSTALLED LVMD'S BACKBONE WATER MAIN INSTALLATION.

REV	SYMBOL	DESCRIPTION OF CHANGE	RCE	DATE
1		50%PS&E		9/9/11
2		75%PS&E		2/28/12
3		90%PS&E		6/8/12
4		100%PS&E		10/5/12

PREPARED BY:

**Kimley-Horn and Associates, Inc.**  
 © 2012 KIMLEY-HORN AND ASSOCIATES, INC.  
 6800 Owensmouth Avenue, Suite 410, Los Angeles CA  
 Tel (818) 227-2790 Fax (916) 608-0885

MICHAEL CHOI R.C.E. 67851 DATE

REVIEWED BY:

CHARMAINE YAMBAO DATE  
 ASSOCIATE CIVIL ENGINEER

APPROVED BY:

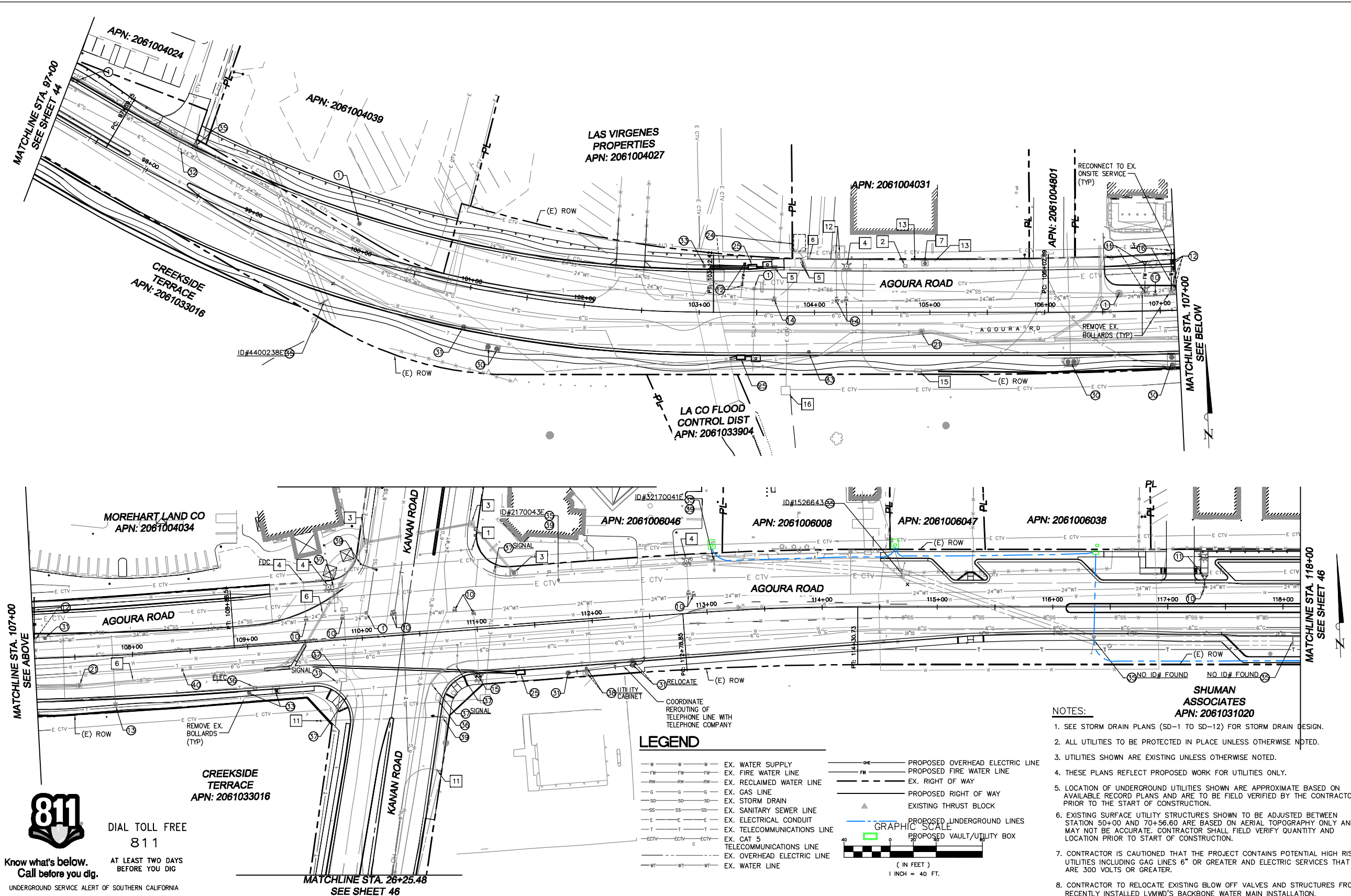
RAMIRO ADEVA DATE  
 DIRECTOR OF PUBLIC WORKS/CITY ENGINEER

CITY OF  
**AGOURA HILLS**

AGOURA ROAD WIDENING  
 UTILITY PLANS U-4

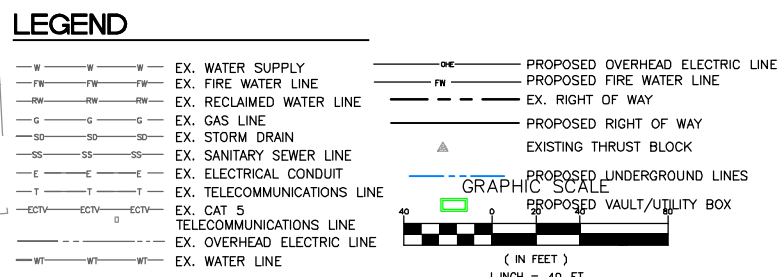
DRAWN BY: RC  
 CHECKED BY: JS/MC  
 KHA JOB NUMBER: 099083017  
 SHEET 44 OF 101

100% SUBMITTAL - OCTOBER 2012



- ### LEGEND
- PROTECT-IN-PLACE**
- 1 EX. STREET LIGHT AND POLE
  - 2 EX. UTILITY BOX
  - 3 EX. STORM DRAIN CATCH BASIN
  - 4 EX. FIRE HYDRANT
  - 5 EX. UTILITY VALVE
  - 6 EX. STORM DRAIN
  - 7 EX. MANHOLE
  - 8 EX. TELEPHONE MANHOLE AND WALL
  - 9 EX. TRAFFIC SIGNAL AND POLE
  - 10 EX. PULL BOX
  - 11 EX. POWER POLE
  - 12 EX. WATER METER
  - EX. VENT
  - 14 EX. RECLAIMED WATER VALVE
  - 15 EX. COMM UTILITY
  - 16 EX. VAULT
- CONSTRUCTION/RELOCATION SANITARY SEWER**
- 1 ADJUST EX. SEWER MANHOLE TO GRADE
- WATER**
- 10 ADJUST EX. VALVE TO GRADE.
  - 11 RELOCATE EX. FIRE HYDRANT
  - 12 RELOCATE EX. WATER METER.
  - 13 ADJUST EX. METER TO GRADE.
  - 14 RELOCATE EX. WATER VALVE.
  - 15 ADJUST EX. FIRE HYDRANT TO GRADE. REMOVE EX. GUARD POSTS AS REQUIRED. CONTRACTOR TO VERIFY. MINIMUM DISTANCE FROM NEW CURB FACE TO HYDRANT.
  - 16 RELOCATE EX. BACKFLOW DEVICE.
  - 17 ADJUST EX. MANHOLE TO GRADE
- STORM DRAIN**
- 21 EX. OUTLET STRUCTURE TO BE MODIFIED. SEE STORM DRAIN PLANS.
  - 22 ADJUST EX. STORM DRAIN MANHOLE TO GRADE.
  - EX. DEBRIS BASIN AND OUTLET STRUCTURE TO BE MODIFIED. SEE STORM DRAIN PLANS.
  - 23 EX. CATCH BASIN TO BE RELOCATED. SEE STORM DRAIN PLANS.
  - 24 EX. OZONE TREATMENT FACILITY TO BE RELOCATED. COORDINATE FINAL LOCATION WITH CITY.
  - 25 NEW CATCH BASIN/INLET PER STORM DRAIN PLAN.
- ELECTRICAL/TELEPHONE/CABLE**
- 31 ADJUST EX. TELEPHONE MANHOLE TO GRADE.
  - 32 ADJUST EX. UTILITY VALVE TO GRADE.
  - 33 ADJUST EX. ELECTRIC MANHOLE TO GRADE.
  - 34 RELOCATE EX. ELECTRIC MANHOLE. COORDINATE RELOCATION WITH SCE.
  - 35 EX. POWER POLE TO BE REMOVED AND POWER LINES TO BE UNDERGROUNDED. COORDINATE UNDERGROUNDING WITH SCE.
  - 36 ADJUST EX. UTILITY BOX TO GRADE.
  - 37 RELOCATE TRAFFIC SIGNAL AND STREET LIGHT SEE TRAFFIC SIGNAL AND STREET LIGHTING PLANS.
  - 38 RELOCATE EX. UTILITY BOX.
  - 39 SEE LIGHTING PLAN FOR LIGHTING MODIFICATION OR REPLACEMENT.
- GAS**
- 40 ADJUST EX. VALVE TO GRADE.

**811**  
 Know what's below.  
 Call before you dig.  
 AT LEAST TWO DAYS BEFORE YOU DIG  
 UNDERGROUND SERVICE ALERT OF SOUTHERN CALIFORNIA



**NOTES:**

- SEE STORM DRAIN PLANS (SD-1 TO SD-12) FOR STORM DRAIN DESIGN.
- ALL UTILITIES TO BE PROTECTED IN PLACE UNLESS OTHERWISE NOTED.
- UTILITIES SHOWN ARE EXISTING UNLESS OTHERWISE NOTED.
- THESE PLANS REFLECT PROPOSED WORK FOR UTILITIES ONLY.
- LOCATION OF UNDERGROUND UTILITIES SHOWN ARE APPROXIMATE BASED ON AVAILABLE RECORD PLANS AND ARE TO BE FIELD VERIFIED BY THE CONTRACTOR PRIOR TO THE START OF CONSTRUCTION.
- EXISTING SURFACE UTILITY STRUCTURES SHOWN TO BE ADJUSTED BETWEEN STATION 50+00 AND 70+56.60 ARE BASED ON AERIAL TOPOGRAPHY ONLY AND MAY NOT BE ACCURATE. CONTRACTOR SHALL FIELD VERIFY QUANTITY AND LOCATION PRIOR TO START OF CONSTRUCTION.
- CONTRACTOR IS CAUTIONED THAT THE PROJECT CONTAINS POTENTIAL HIGH RISK UTILITIES INCLUDING GAS LINES 6" OR GREATER AND ELECTRIC SERVICES THAT ARE 300 VOLTS OR GREATER.
- CONTRACTOR TO RELOCATE EXISTING BLOW OFF VALVES AND STRUCTURES FROM RECENTLY INSTALLED LVMD'S BACKBONE WATER MAIN INSTALLATION.

**SHUMAN ASSOCIATES**  
 APN: 2061031020

REV	SYMBOL	DESCRIPTION OF CHANGE	RCE	DATE
1		50%PS&E		9/9/11
2		75%PS&E		2/28/12
3		90%PS&E		6/8/12
4		100%PS&E		10/5/12

PREPARED BY:

**Kimley-Horn and Associates, Inc.**  
 © 2012 KIMLEY-HORN AND ASSOCIATES, INC.  
 6800 Owensmouth Avenue, Suite 410, Los Angeles CA  
 Tel (818) 227-2790 Fax (916) 608-0885

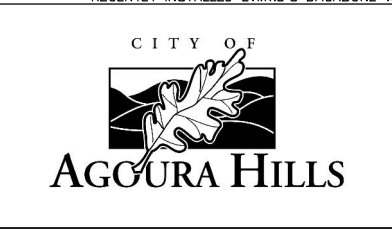
MICHAEL CHOI R.C.E. 67851 DATE

REVIEWED BY:

CHARMAINE YAMBAO DATE  
 ASSOCIATE CIVIL ENGINEER

APPROVED BY:

RAMIRO ADEVA DATE  
 DIRECTOR OF PUBLIC WORKS/CITY ENGINEER



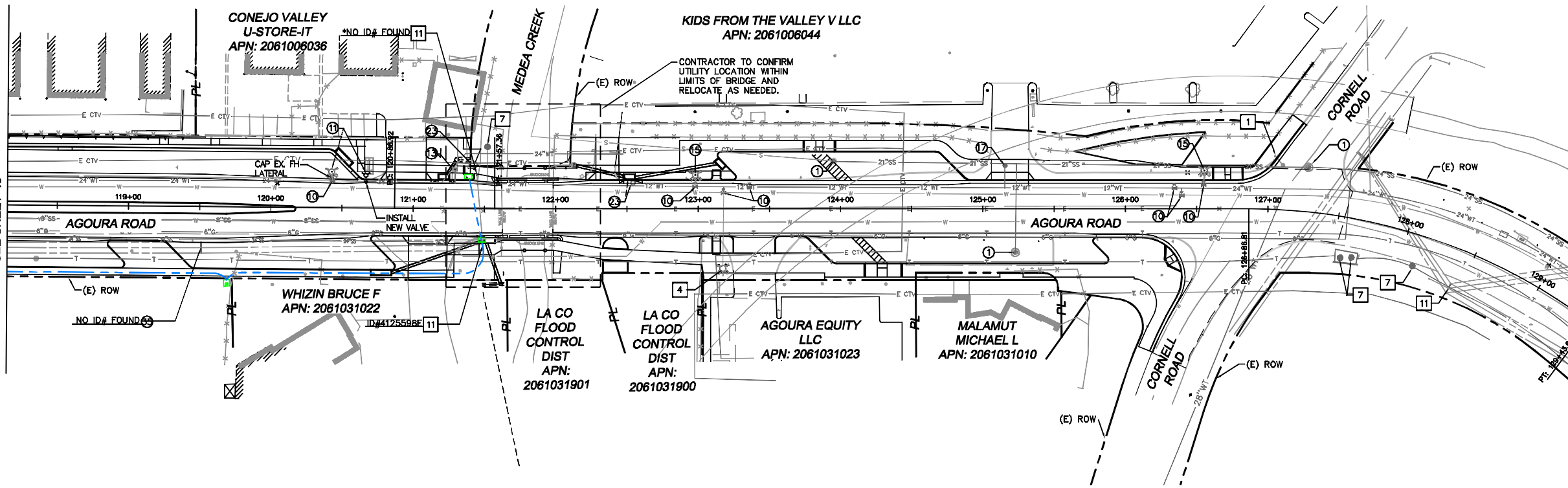
AGOURA ROAD WIDENING  
 UTILITY PLANS U-5

DRAWN BY: RC  
 CHECKED BY: JS/MC  
 KHA JOB NUMBER: 099083017  
 SHEET 45 OF 101

100% SUBMITTAL - OCTOBER 2012



MATCHLINE STA. 118+00  
SEE SHEET 45



**LEGEND**

**PROTECT-IN-PLACE**

- 1 EX. STREET LIGHT AND POLE
- 2 EX. UTILITY BOX
- 3 EX. STORM DRAIN CATCH BASIN
- 4 EX. FIRE HYDRANT
- 5 EX. UTILITY VALVE
- 6 EX. STORM DRAIN
- 7 EX. MANHOLE
- 8 EX. TELEPHONE MANHOLE AND WALL
- 9 EX. TRAFFIC SIGNAL AND POLE
- 10 EX. PULL BOX
- 11 EX. POWER POLE
- 12 EX. WATER METER
- 13 EX. VENT
- 14 EX. RECLAIMED WATER VALVE
- 15 EX. COMM UTILITY
- 16 EX. VAULT

**CONSTRUCTION/RELOCATION  
SANITARY SEWER**

- 1 ADJUST EX. SEWER MANHOLE TO GRADE
- 10 ADJUST EX. VALVE TO GRADE.
- 11 RELOCATE EX. FIRE HYDRANT
- 12 RELOCATE EX. WATER METER.
- 13 ADJUST EX. METER TO GRADE.
- 14 RELOCATE EX. WATER VALVE.
- 15 ADJUST EX. FIRE HYDRANT TO GRADE. REMOVE EX. GUARD POSTS AS REQUIRED. CONTRACTOR TO VERIFY. MINIMUM DISTANCE FROM NEW CURB FACE TO HYDRANT.
- 16 RELOCATE EX. BACKFLOW DEVICE.
- 17 ADJUST EX. MANHOLE TO GRADE

**WATER**

- 10 ADJUST EX. VALVE TO GRADE.
- 11 RELOCATE EX. FIRE HYDRANT
- 12 RELOCATE EX. WATER METER.
- 13 ADJUST EX. METER TO GRADE.
- 14 RELOCATE EX. WATER VALVE.
- 15 ADJUST EX. FIRE HYDRANT TO GRADE. REMOVE EX. GUARD POSTS AS REQUIRED. CONTRACTOR TO VERIFY. MINIMUM DISTANCE FROM NEW CURB FACE TO HYDRANT.
- 16 RELOCATE EX. BACKFLOW DEVICE.
- 17 ADJUST EX. MANHOLE TO GRADE

**STORM DRAIN**

- 21 EX. OUTLET STRUCTURE TO BE MODIFIED. SEE STORM DRAIN PLANS.
- 22 ADJUST EX. STORM DRAIN MANHOLE TO GRADE.
- 23 EX. DEBRIS BASIN AND OUTLET STRUCTURE TO BE MODIFIED. SEE STORM DRAIN PLANS.
- 24 EX. CATCH BASIN TO BE RELOCATED. SEE STORM DRAIN PLANS.
- 25 EX. OZONE TREATMENT FACILITY TO BE RELOCATED. COORDINATE FINAL LOCATION WITH CITY.
- 26 NEW CATCH BASIN/INLET PER STORM DRAIN PLAN.

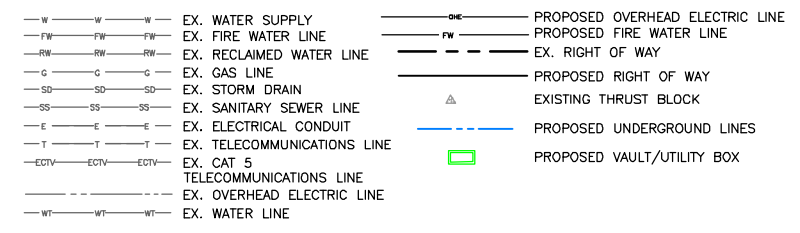
**ELECTRICAL/TELEPHONE/CABLE**

- 31 ADJUST EX. TELEPHONE VAULT TO GRADE. COORDINATE WORK WITH TELEPHONE COMPANY. REMOVE BOLLARDS OR WALLS AS REQUIRED.
- 32 ADJUST EX. TELEPHONE MANHOLE TO GRADE.
- 33 ADJUST EX. UTILITY VALVE TO GRADE.
- 34 ADJUST EX. ELECTRIC MANHOLE TO GRADE.
- 35 RELOCATE EX. ELECTRIC MANHOLE. COORDINATE RELOCATION WITH SCE.
- 36 EX. POWER POLE TO BE REMOVED AND POWER LINES TO BE UNDERGROUNDED. COORDINATE UNDERGROUNDING WITH SCE.
- 37 ADJUST EX. UTILITY BOX TO GRADE.
- 38 RELOCATE TRAFFIC SIGNAL AND STREET LIGHT SEE TRAFFIC SIGNAL AND STREET LIGHTING PLANS.
- 39 RELOCATE EX. UTILITY BOX.
- 40 SEE LIGHTING PLAN FOR LIGHTING MODIFICATION OR REPLACEMENT.

**GAS**

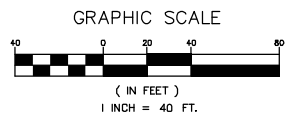
- 41 ADJUST EX. VALVE TO GRADE.

**LEGEND**



**NOTES:**

1. SEE STORM DRAIN PLANS (SD-1 TO SD-12) FOR STORM DRAIN DESIGN.
2. ALL UTILITIES TO BE PROTECTED IN PLACE UNLESS OTHERWISE NOTED.
3. UTILITIES SHOWN ARE EXISTING UNLESS OTHERWISE NOTED.
4. THESE PLANS REFLECT PROPOSED WORK FOR UTILITIES ONLY.
5. LOCATION OF UNDERGROUND UTILITIES SHOWN ARE APPROXIMATE BASED ON AVAILABLE RECORD PLANS AND ARE TO BE FIELD VERIFIED BY THE CONTRACTOR PRIOR TO THE START OF CONSTRUCTION.
6. EXISTING SURFACE UTILITY STRUCTURES SHOWN TO BE ADJUSTED BETWEEN STATION 50+00 AND 70+56.60 ARE BASED ON AERIAL TOPOGRAPHY ONLY AND MAY NOT BE ACCURATE. CONTRACTOR SHALL FIELD VERIFY QUANTITY AND LOCATION PRIOR TO START OF CONSTRUCTION.
7. CONTRACTOR IS CAUTIONED THAT THE PROJECT CONTAINS POTENTIAL HIGH RISK UTILITIES INCLUDING GAG LINES 6" OR GREATER AND ELECTRIC SERVICES THAT ARE 300 VOLTS OR GREATER.
8. CONTRACTOR TO RELOCATE EXISTING BLOW OFF VALVES AND STRUCTURES FROM RECENTLY INSTALLED LVMWD'S BACKBONE WATER MAIN INSTALLATION.



**811**  
DIAL TOLL FREE  
811  
Know what's below.  
Call before you dig.  
AT LEAST TWO DAYS  
BEFORE YOU DIG

UNDERGROUND SERVICE ALERT OF SOUTHERN CALIFORNIA

1		50%PS&E		9/9/11
2		75%PS&E		2/28/12
3		90%PS&E		6/8/12
4		100%PS&E		10/5/12
REV	SYMBOL	DESCRIPTION OF CHANGE	RCE	DATE

PREPARED BY:

**Kimley-Horn and Associates, Inc.**  
© 2012 KIMLEY-HORN AND ASSOCIATES, INC.  
6800 Owensmouth Avenue, Suite 410, Los Angeles CA  
Tel (818) 227-2790 Fax (916) 608-0885

MICHAEL CHOI R.C.E. 67851 DATE

REVIEWED BY:

CHARMAINE YAMBAO DATE  
ASSOCIATE CIVIL ENGINEER

APPROVED BY:

RAMIRO ADEVA DATE  
DIRECTOR OF PUBLIC WORKS/CITY ENGINEER

CITY OF  
**AGOURA HILLS**

AGOURA ROAD WIDENING  
UTILITY PLANS U-6

DRAWN BY: RC  
CHECKED BY: JS/MC  
KHA JOB NUMBER: 099083017  
SHEET 46 OF 101

100% SUBMITTAL - OCTOBER 2012

**LEGEND**

**PROTECT-IN-PLACE**

- 1 EX. STREET LIGHT AND POLE
- 2 EX. UTILITY BOX
- 3 EX. STORM DRAIN CATCH BASIN
- 4 EX. FIRE HYDRANT
- 5 EX. UTILITY VALVE
- 6 EX. STORM DRAIN
- 7 EX. MANHOLE
- 8 EX. TELEPHONE MANHOLE AND WALL
- 9 EX. TRAFFIC SIGNAL AND POLE
- 10 EX. PULL BOX
- 11 EX. POWER POLE
- 12 EX. WATER METER
- 13 EX. VENT
- 14 EX. RECLAIMED WATER VALVE
- 15 EX. COMM UTILITY
- 16 EX. VAULT

**CONSTRUCTION/RELOCATION  
SANITARY SEWER**

- 1 ADJUST EX. SEWER MANHOLE TO GRADE

**WATER**

- 10 ADJUST EX. VALVE TO GRADE.
- 11 RELOCATE EX. FIRE HYDRANT
- 12 RELOCATE EX. WATER METER.
- 13 ADJUST EX. METER TO GRADE.
- 14 RELOCATE EX. WATER VALVE.
- 15 ADJUST EX. FIRE HYDRANT TO GRADE. REMOVE EX. GUARD POSTS AS REQUIRED. CONTRACTOR TO VERIFY. MINIMUM DISTANCE FROM NEW CURB FACE TO HYDRANT.
- 16 RELOCATE EX. BACKFLOW DEVICE.
- 17 ADJUST EX. MANHOLE TO GRADE

**STORM DRAIN**

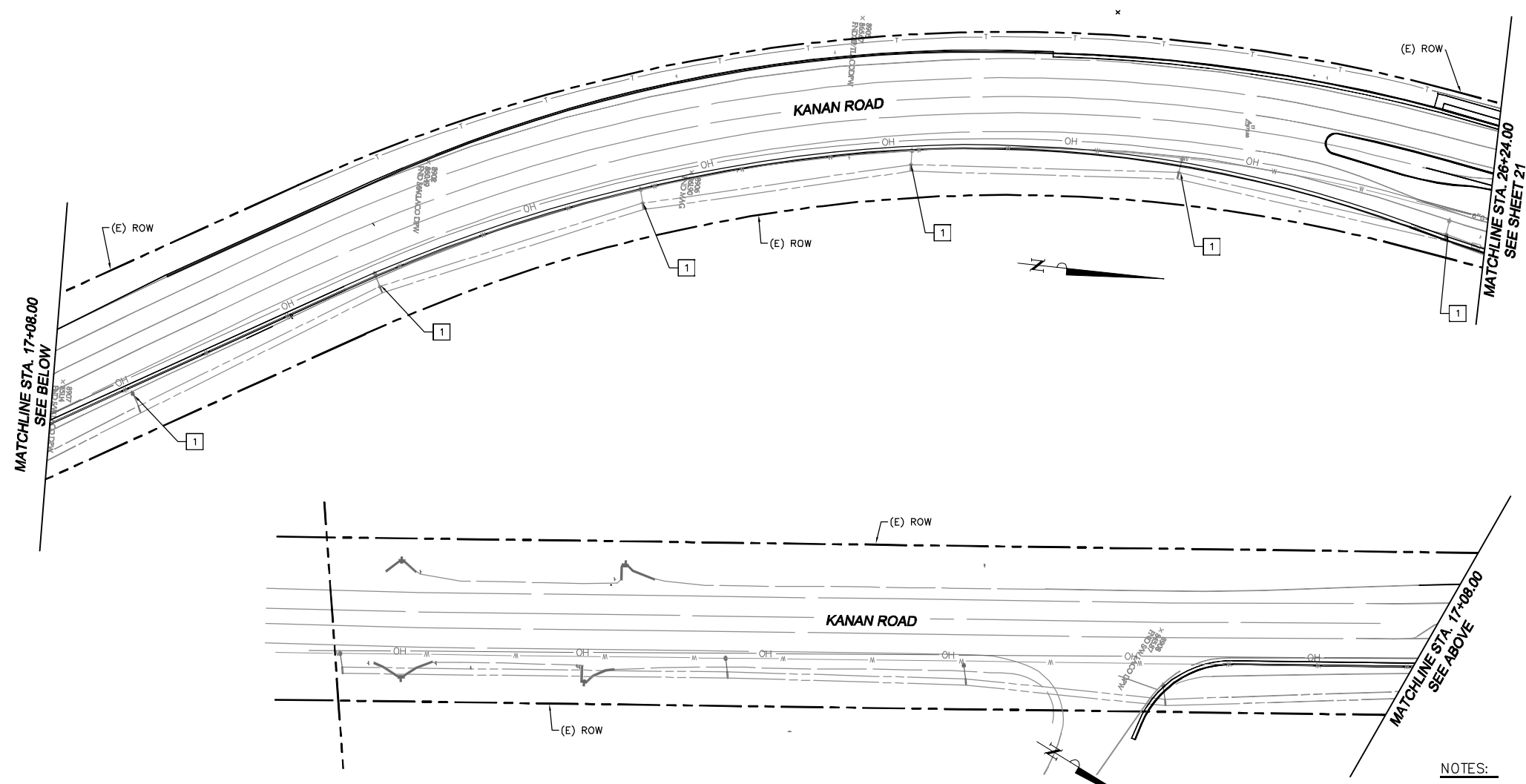
- 21 EX. OUTLET STRUCTURE TO BE MODIFIED. SEE STORM DRAIN PLANS.
- 22 ADJUST EX. STORM DRAIN MANHOLE TO GRADE.
- 23 EX. DEBRIS BASIN AND OUTLET STRUCTURE TO BE MODIFIED. SEE STORM DRAIN PLANS.
- 24 EX. CATCH BASIN TO BE RELOCATED. SEE STORM DRAIN PLANS.
- 25 EX. OZONE TREATMENT FACILITY TO BE RELOCATED. COORDINATE FINAL LOCATION WITH CITY.
- 26 NEW CATCH BASIN/INLET PER STORM DRAIN PLAN.

**ELECTRICAL/TELEPHONE/CABLE**

- 31 ADJUST EX. TELEPHONE VAULT TO GRADE. COORDINATE WORK WITH TELEPHONE COMPANY. REMOVE BOLLARDS OR WALLS AS REQUIRED.
- 32 ADJUST EX. TELEPHONE MANHOLE TO GRADE.
- 33 ADJUST EX. UTILITY VALVE TO GRADE.
- 34 ADJUST EX. ELECTRIC MANHOLE TO GRADE.
- 35 RELOCATE EX. ELECTRIC MANHOLE. COORDINATE RELOCATION WITH SCE.
- 36 EX. POWER POLE TO BE REMOVED AND POWER LINES TO BE UNDERGROUNDED. COORDINATE UNDERGROUNDING WITH SCE.
- 37 ADJUST EX. UTILITY BOX TO GRADE.
- 38 RELOCATE TRAFFIC SIGNAL AND STREET LIGHT SEE TRAFFIC SIGNAL AND STREET LIGHTING PLANS.
- 39 RELOCATE EX. UTILITY BOX.
- 40 SEE LIGHTING PLAN FOR LIGHTING MODIFICATION OR REPLACEMENT.

**GAS**

- 41 ADJUST EX. VALVE TO GRADE.



**LEGEND**

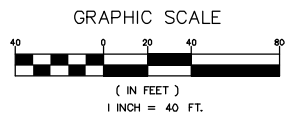
- W — W — W — EX. WATER SUPPLY
- FW — FW — FW — EX. FIRE WATER LINE
- RW — RW — RW — EX. RECLAIMED WATER LINE
- G — G — G — EX. GAS LINE
- SD — SD — SD — EX. STORM DRAIN
- SS — SS — SS — EX. SANITARY SEWER LINE
- E — E — E — EX. ELECTRICAL CONDUIT
- T — T — T — EX. TELECOMMUNICATIONS LINE
- ECTV — ECTV — ECTV — EX. CAT 5 TELECOMMUNICATIONS LINE
- — — — — EX. OVERHEAD ELECTRIC LINE
- WT — WT — WT — EX. WATER LINE
- OH — — — — PROPOSED OVERHEAD ELECTRIC LINE
- FW — — — — PROPOSED FIRE WATER LINE
- — — — — EX. RIGHT OF WAY
- — — — — PROPOSED RIGHT OF WAY
- — — — — EXISTING THRUST BLOCK
- — — — — PROPOSED UNDERGROUND LINES
- — — — — PROPOSED VAULT/UTILITY BOX

**NOTES:**

1. SEE STORM DRAIN PLANS (SD-1 TO SD-12) FOR STORM DRAIN DESIGN.
2. ALL UTILITIES TO BE PROTECTED IN PLACE UNLESS OTHERWISE NOTED.
3. UTILITIES SHOWN ARE EXISTING UNLESS OTHERWISE NOTED.
4. THESE PLANS REFLECT PROPOSED WORK FOR UTILITIES ONLY.
5. LOCATION OF UNDERGROUND UTILITIES SHOWN ARE APPROXIMATE BASED ON AVAILABLE RECORD PLANS AND ARE TO BE FIELD VERIFIED BY THE CONTRACTOR PRIOR TO THE START OF CONSTRUCTION.
6. EXISTING SURFACE UTILITY STRUCTURES SHOWN TO BE ADJUSTED BETWEEN STATION 50+00 AND 70+56.60 ARE BASED ON AERIAL TOPOGRAPHY ONLY AND MAY NOT BE ACCURATE. CONTRACTOR SHALL FIELD VERIFY QUANTITY AND LOCATION PRIOR TO START OF CONSTRUCTION.
7. CONTRACTOR IS CAUTIONED THAT THE PROJECT CONTAINS POTENTIAL HIGH RISK UTILITIES INCLUDING GAG LINES 6" OR GREATER AND ELECTRIC SERVICES THAT ARE 300 VOLTS OR GREATER.
8. CONTRACTOR TO RELOCATE EXISTING BLOW OFF VALVES AND STRUCTURES FROM RECENTLY INSTALLED LVMWD'S BACKBONE WATER MAIN INSTALLATION.



DIAL TOLL FREE  
**811**  
AT LEAST TWO DAYS  
BEFORE YOU DIG



UNDERGROUND SERVICE ALERT OF SOUTHERN CALIFORNIA

REV	SYMBOL	DESCRIPTION OF CHANGE	RCE	DATE
1		50%PS&E		9/9/11
2		75%PS&E		2/28/12
3		90%PS&E		6/8/12
4		100%PS&E		10/5/12

PREPARED BY:

© 2012 KIMLEY-HORN AND ASSOCIATES, INC.  
6800 Owensmouth Avenue, Suite 410, Los Angeles CA  
Tel (818) 227-2790 Fax (916) 608-0885

MICHAEL CHOI R.C.E. 67851 DATE

REVIEWED BY:

CHARMAINE YAMBAO DATE  
ASSOCIATE CIVIL ENGINEER

APPROVED BY:

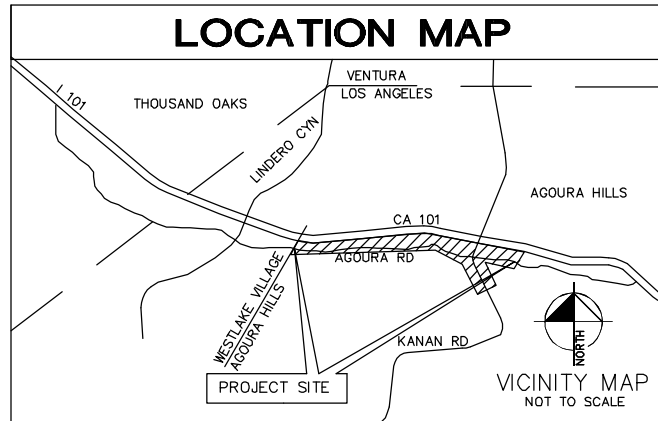
RAMIRO ADEVA DATE  
DIRECTOR OF PUBLIC WORKS/CITY ENGINEER

AGOURA ROAD WIDENING  
UTILITY PLANS U-7

DRAWN BY: RC  
CHECKED BY: JS/MC  
KHA JOB NUMBER: 099083017

SHEET 47 OF 101

100% SUBMITTAL - OCTOBER 2012



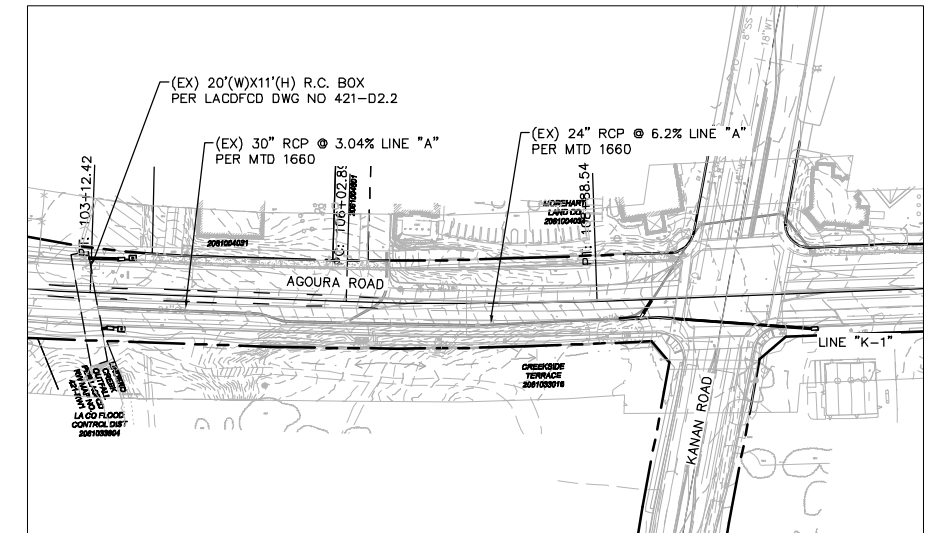
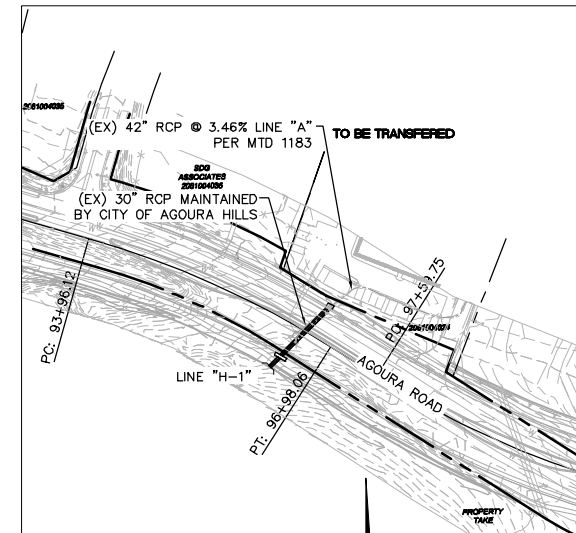
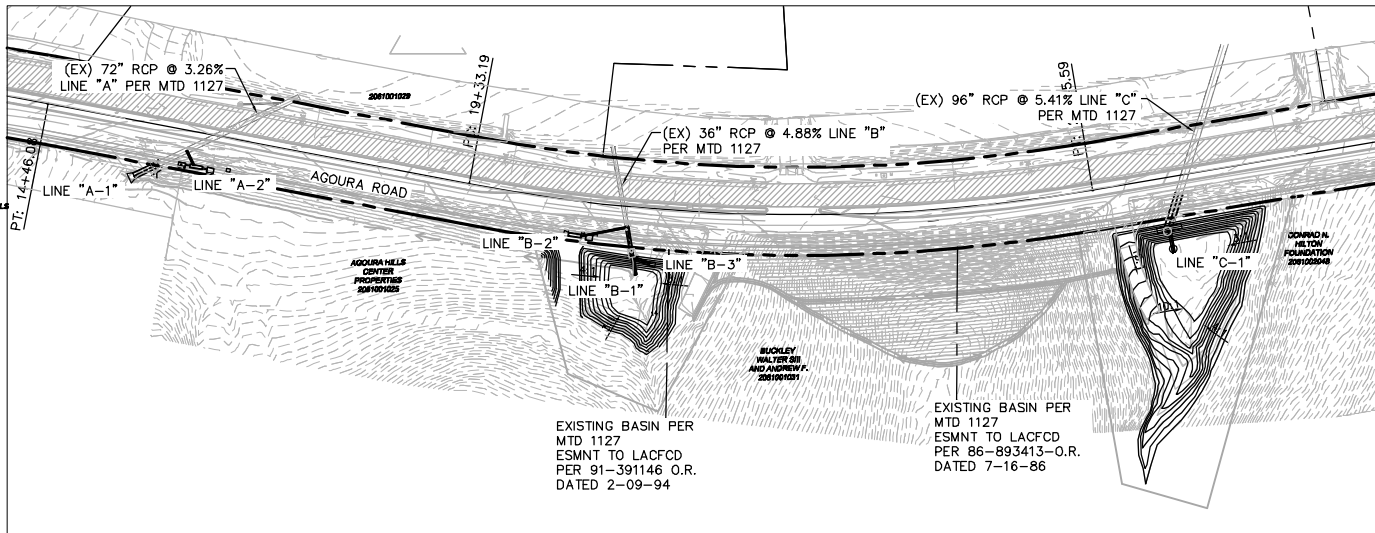
# CITY OF AGOURA HILLS

## MTD #####

### INDEX TO PROJECT DRAWINGS

SHEET NO.	DESCRIPTION
48	TITLE SHEET
49	GENERAL NOTES, WATER QUALITY NOTES
50	LINE "A" MTD 1127 MODIFICATION, LINE "E", LINE "F" PLAN AND PROFILE
51	LINE "H" MTD 1183 MODIFICATION, LINE "G", LINE "J" PLAN AND PROFILE
52	LINE "K" MTD 1660 MODIFICATION, LINE "N" PLAN AND PROFILE
53	LINE "L", LINE "M" PLAN AND PROFILE
54	LINE "B" MTD 1127 MODIFICATION DEBRIS BASIN PLAN AND PROFILE
55	LINE "C" MTD 1127 MODIFICATION DEBRIS BASIN PLAN AND PROFILE
56	DEBRIS BASIN DETAILS
##	DEBRIS BASIN STRUCTURAL NOTES
##	STORM DRAIN DETAILS
##	STORM DRAIN DETAILS

THOMAS GUIDE PAGES #557 - 558



### INDEX TO STANDARD DRAWINGS

LOS ANGELES COUNTY DEPARTMENT OF PUBLIC WORKS

DWG. NO.	DESCRIPTION
3080-2	PIPE BEDDING CASE 3
3097-0	DEBRIS DAMS AND BASINS OUTLET WORKS
6008-1	MINIMUM PUBLIC SAFETY REQUIREMENTS

CALTRANS

STD. DWG.	DESCRIPTION
D86A	WINGWALL HEADWALLS
D89	PIPE HEADWALLS

AMERICAN PUBLIC WORKS ASSOCIATION

STD. PLAN	TITLE
300-3	CURB OPENING CATCH BASIN
304-3	GRATING CATCH BASIN - ALLEY (LONGITUDINAL)
308-2	MONOLITHIC CATCH BASIN CONNECTION
309-2	CATCH BASIN REINFORCEMENT
310-3	CATCH BASIN FACE PLATE ASSEMBLY AND PROTECTION BAR
312-3	CATCH BASIN MANHOLE FRAME AND COVER
320-2	MANHOLE (MAIN LINE ID=36" OR LARGER)
328-2	MANHOLE SHAFT
335-2	PIPE CONNECTION TO EXISTING STORM DRAINS
340-2	TRANSITION STRUCTURE
380-4	CONCRETE COLLAR FOR RCP 12" THROUGH 72"
600-3	CHAIN LINK FENCE AND GATES
633-3	36-INCH MANHOLE FRAME AND COVER
635-3	STEEL STEP

### KEY MAPS FOR LACFCD FACILITY MODIFICATIONS

1"=100'

WORK AFFECTING LACFCD FACILITIES  
"J-1", "J-2", "K-1", "DEBRIS BASIN B", "B-1", "DEBRIS BASIN C", AND "C-1"

MODIFICATIONS TO CITY OF AGOURA HILLS STORM DRAIN FACILITIES

LINE: "E-1", "F-1", "G-1", "H-1",  
"L-1", "L-2", "M-1", "N-1"

### BENCH MARKS

COUNTY OF LOS ANGELES BENCHMARK  
NO. Y-11279 ELEV. = 966.028 (2008 ADJ)  
DWP BM TAG IN N CB 1M(3.3') E/O BCR @  
NE COR ENT TO # 30501 AGOURA HILLS  
BUS PARK & AGOURA RD.

### PRIVATE ENGINEER'S NOTICE TO CONTRACTOR

THE EXISTENCE AND LOCATION OF ANY UNDERGROUND UTILITY PIPES OR STRUCTURES SHOWN ON THESE PLANS ARE OBTAINED BY A SEARCH OF THE AVAILABLE RECORDS. TO THE BEST OF OUR KNOWLEDGE, THERE ARE NO EXISTING UTILITIES EXCEPT AS SHOWN ON THIS MAP.

THE CONTRACTOR IS REQUIRED TO TAKE DUE PRECAUTIONARY MEASURES TO PROTECT THE UTILITY LINES SHOWN AND ANY OTHER LINES NOT OF RECORD OR NOT SHOWN ON THIS SET OF DRAWINGS

RCE SIGNATURE \_\_\_\_\_

DATE \_\_\_\_\_

REV	SYMBOL	DESCRIPTION OF CHANGE	RCE	DATE
1		50%PS&E		9/9/11
2		75%PS&E		2/28/12
3		90%PS&E		6/8/12
4		100%PS&E		10/5/12

PREPARED BY:

**Kimley-Horn and Associates, Inc.**

© 2012 KIMLEY-HORN AND ASSOCIATES, INC.  
6800 Owensmouth Avenue, Suite 410, Los Angeles CA  
Tel (818) 227-2790 Fax (916) 608-0885

MICHAEL CHOI R.C.E. 67851 DATE \_\_\_\_\_



REVIEWED BY:

CHARMAINE YAMBAO DATE \_\_\_\_\_  
ASSOCIATE CIVIL ENGINEER

APPROVED BY:

RAMIRO ADEVA DATE \_\_\_\_\_  
DIRECTOR OF PUBLIC WORKS/CITY ENGINEER



AGOURA ROAD WIDENING  
STORM DRAIN PLANS SD-1

DRAWN BY:  
RC

CHECKED BY:  
JS/MC

KHA JOB NUMBER 099083017

SHEET 48 OF 101

100% SUBMITTAL - OCTOBER 2012

GENERAL NOTES

- A PERMIT SHALL BE OBTAINED AND ALL FEES AND DEPOSITS FOR CONSTRUCTION INSPECTION SHALL BE PAID TO THE DEPARTMENT OF PUBLIC WORKS AT THE PERMIT COUNTER, 900 SOUTH FREMONT AVENUE, 8TH FLOOR, PRIOR TO STARTED WORK UNDER THIS CONTRACT. ALSO, ALL OTHER REQUIRED PERMITS, SUCH AS ROAD EXCAVATION PERMITS, MUST BE OBTAINED PRIOR TO STARTING WORK.
- THE CONTRACTOR SHALL CONTACT THE DISTRICT OFFICE LISTED ON THE "APPLICATION FOR STORM DRAIN CONSTRUCTION INSPECTION FORM 1" TO ARRANGE FOR AN ACCEPTABLE CONSTRUCTION START DATE.
- APPROVAL OF THIS PLAN BY THE COUNTY OF LOS ANGELES DOES NOT CONSTITUTE A REPRESENTATION TO THE ACCURACY OF THE LOCATION, OR THE EXISTENCE OR NONEXISTENCE OF ANY UNDERGROUND UTILITY, PIPE OR STRUCTURE WITHIN THE LIMITS OF THIS PROJECT. THE NOTE APPLIES TO ALL SHEETS.
- ALL WORK SHALL BE IN ACCORDANCE WITH THE LATEST ADOPTED EDITION OF THE "STANDARD SPECIFICATION FOR PUBLIC WORKS CONSTRUCTION," INCLUDING SUPPLEMENTS, AND SHALL BE PROSECUTED ONLY IN THE PRESENCE OF THE DIRECTOR OF PUBLIC WORKS/CITY ENGINEER.
- THE CONTRACTOR'S ATTENTION IS DIRECTED TO SECTION 7-10.4.1 OF THE STANDARD SPECIFICATIONS FOR PUBLIC WORKS CONSTRUCTION IN REGARD TO SAFETY ORDERS.
- ELEVATIONS ARE IN NORTH AMERICAN VERTICAL DATUM OF 1988, UNLESS OTHERWISE SPECIFIED.
- NO CONCRETE SHALL BE PLACED UNTIL THE FORMS AND REINFORCING STEEL HAVE BEEN PLACED, INSPECTED AND APPROVED.
- ALL STRUCTURAL CONCRETE SHALL BE PORTLAND CEMENT CONCRETE WITH AN ULTIMATE 28 DAY COMPRESSIVE STRENGTH OF 4500 PSI UNLESS OTHERWISE NOTED.
- TRANSVERSE REINFORCEMENT AND TRANSVERSE JOINTS SHALL BE PLACED AT RIGHT ANGLES (OR RADIAL) TO THE CONDUIT CENTERLINE EXCEPT AS OTHERWISE SHOWN ON THE DRAWINGS.
- ALL STEEL ADJACENT TO FACE OF CONCRETE SHALL HAVE A 2-1/2-INCH CLEARANCE UNLESS OTHERWISE SPECIFIED.
- REINFORCEMENT SHALL BE DEFORMED BARS OF INTERMEDIATE GRADE STEEL, PER ASTM A-615-GRADE 60.
- ALL BAR BENDS AND HOOKS SHALL CONFORM TO THE AMERICAN CONCRETE INSTITUTE "MANUAL OF STANDARD PRACTICE."
- DIMENSIONS FROM FACE OF CONCRETE TO STEEL ARE TO CENTERLINE OF STEEL UNLESS OTHERWISE NOTED.
- ALL STEEL THAT IS TO BE CONTINUOUS SHALL HAVE A MINIMUM LAP OF 48 BAR DIAMETERS OR 24 INCHES, WHICHEVER IS GREATER.
- ALL CONSTRUCTION JOINTS IN THE FOOTING OR SLABS AND WALLS SHALL BE IN THE SAME PLACE. NO STAGGERING OF JOINTS WILL BE PERMITTED.
- ALL EXPOSED SEDGES SHALL BE FINISHED WITH A 3/4-INCH CHAMFER.
- UNLESS OTHERWISE SHOWN, CONCRETE DIMENSIONS SHALL BE MEASURED VERTICALLY OR HORIZONTALLY AND PARALLEL OR AT RIGHT ANGLES (OR RADIAL) TO THE CENTER LINE OF CONSTRUCTION.
- CONCRETE BACKFILL IS REQUIRED WHEN THE PIPE HAS LESS THAN ONE FOOT OF COVER. THE CONCRETE BACKFILL SHALL CONSIST OF 1:3:5 MIX, PORTLAND CEMENT CONCRETE POURED FROM WALL TO WALL OF TRENCH AND FROM BOTTOM OF TRENCH TO A MINIMUM OF 4 INCHES OVER THE TOP OF THE PIPE.
- ALL PIPES SHALL BE PLACED IN TRENCH IN NATURAL GROUND AND/OR COMPACTED FILL. THE GROUND LEVEL BEFORE THE TRENCHING SHALL BE AT LEAST 3 FEET ABOVE THE TOP OF THE PIPE ELEVATION, OR AT FINISHED SURFACE ELEVATION, WHICHEVER IS LESS.
- ALL BACKFILL AND FILLS OUTSIDE OF STREET RIGHT OF WAY SHALL BE COMPACTED TO 90 PERCENT OF MAXIMUM DENSITY AS DETERMINED BY ASTM SOIL COMPACTION TEST D 1557-91 METHOD "D" UNLESS OTHERWISE SPECIFIED. THIS SHALL BE CERTIFIED BY A GEOTECHNICAL ENGINEER. THIS CERTIFICATION SHALL BE SUBMITTED TO THE CITY ENGINEER PRIOR TO ACCEPTANCE OF THE WORK BY THE COUNTY.
- ALL BACKFILL AND FILLS WITHIN STREET RIGHTS OF WAY SHALL BE COMPACTED IN ACCORDANCE WITH CITY REQUIREMENTS UNLESS OTHERWISE NOTED AND INSPECTED BY THE CITY. THE SOIL COMPACTION SHALL BE CERTIFIED BY A GEOTECHNICAL ENGINEER.
- PIPE BEDDING SHALL BE: ACCORDING TO STANDARD PLAN NO. 3080 CASE III, EXCEPT BELL AND SPIGOT PIPE WHICH SHALL BE CASE II BEDDING, UNLESS OTHERWISE SHOWN. "W" VALUES SHALL BE AS SPECIFIED ON STANDARD PLAN NO 3080 FOR CASE III BEDDING, NOTES 3 (A), 3 (B), AND 3 (C). IF THE "W": VALUE AT THE TIP OF THE PIPE IS EXCEEDED, THE BEDDING SHALL BE MODIFIED, AND/OR PIPE OF ADDITIONAL STRENGTH SHALL BE PROVIDED. THE PROPOSED MODIFICATION SHALL BE APPROVED BY THE DEPARTMENT.
- PIPE SHALL BE EMBEDDED 5 INCHES INTO ALL STRUCTURES INCLUDING INLET AND HEAD WALLS, UNLESS OTHERWISE SPECIFIED.
- UNLESS OTHERWISE SPECIFIED IN THE PROFILE ON THESE PLANS, THE PIPE SHALL BE MANUFACTURED WITH A MINIMUM CONCRETE COVER OVER THE STEEL IN THE INVERT OF 0.75 INCHES FOR RCP UP TO 96 INCHES IN DIAMETER AND 1.25 INCHES FOR PIPE GREATER THAN 96 INCHES IN DIAMETER.
- ALL CATCH BASINS WITHIN THE DEDICATED STREET RIGHT OF WAY SHALL BE CONSTRUCTED PER THE STREET PLANS.
- THE CONTRACTOR SHALL PROVIDE TO THE SATISFACTION OF THE CITY ENGINEER AND THE DIRECTOR OF PUBLIC WORKS A DRAINAGE SYSTEM FOR CONTRIBUTORY FLOWS TO BE OPERABLE AT ALL TIMES UNTIL THIS STORM DRAIN SYSTEM IS ACCEPTED FOR MAINTENANCE. THE DESIGN OF THE DRAINAGE SYSTEM MUST BE PREPARED UNDER THE DIRECTION OF A CIVIL ENGINEER.
- ALL REFERENCES OF THIS PLAN TO THE COUNTY ENGINEER, ROAD DEPARTMENT, OR FLOOD CONTROL DISTRICT SHALL APPLY TO THE APPROPRIATE ELEMENTS OF THE DEPARTMENT OF PUBLIC WORKS.

- WHERE THE UTILITIES ARE INDICATED ON THE DRAWINGS TO BE SUPPORTED, SAID SUPPORTS SHALL BE IN ACCORDANCE WITH STANDARD PLANS FOR PUBLIC WORKS CONSTRUCTION NO. 224 UNLESS OTHERWISE INDICATED.
- WHERE THE UTILITIES ARE INDICATED ON THE DRAWINGS TO BE SUPPORTED, SAID SUPPORTS SHALL BE IN ACCORDANCE WITH STANDARD PLANS FOR PUBLIC WORKS CONSTRUCTION NO. 224 UNLESS OTHERWISE INDICATED.
- ALL OPENINGS RESULTING FROM THE CUTTING OR PARTIAL REMOVAL OF EXISTING CULVERTS, PIPES OR SIMILAR STRUCTURES SHALL BE SEALED WITH 8 INCHES OF BRICK AND MORTAR OR 6 INCHES OF CONCRETE, UNLESS OTHERWISE SHOWN.
- MANHOLES SHALL USE THE STANDARD PLANS FOR PUBLIC WORKS CONSTRUCTION NO. 630 FOR THE "FRAME AND COVER" AND NO. 635 FIR THE "STANDARD DROP STEP."
- THIS STORM DRAIN WILL BE NOT FIELD ACCEPTED UNTIL THE STREETS HAVE BEEN PAVED, MANHOLES BROUGHT TO GRADE, AND THE SYSTEM CLEANED TO THE SATISFACTION OF DIRECTOR OF PUBLIC WORKS.
- A NPDES PERMIT FROM THE REGIONAL WATER QUALITY CONTROL BOARD IS REQUIRED BEFORE ANY DISCHARGE OF NON-STORM WATER INTO THE STORM DRAIN IS ALLOWED.
- THE LATEST REVISED STANDARD PLAN OR DRAWING SHALL BE USED UNLESS OTHERWISE NOTED.
- THE SOILS ENGINEER OF RECORD SHALL INSPECT AND APPROVE THE FOUNDATION EXCAVATIONS BEFORE STEEL OR CONCRETE IS PLACED.
- REINFORCEMENTS SHALL BE CONTINUOUS THROUGH ALL CONSTRUCTION JOINT AND SHALL BE SPLICED 30 BAR DIAMETERS. THE SLAB SHALL BE EXTENDED INTO ABUTMENTS FOR A MINIMUM OF 2 FEET.

CONCRETE REMOVAL NOTES:

WHERE REINFORCEMENT IS REQUIRED TO EXTEND THROUGH THE NEW JOINT, CONCRETE SHALL BE REMOVED IN THE FOLLOWING SEQUENCE:

- A SAWCUT SHALL BE MADE ONE AND ONE-HALF INCHES DEEP AT THE REMOVAL LIMITS, CARE SHALL BE EXERCISED IN SAWING AT THE REMOVAL LIMITS, SO AS NOT CUT THE REINFORCING STEEL IN THE REMAINING SLAB. THE EXISTING REINFORCING STEEL SHALL BE RETAINED AND EXTENDED INTO THE NEW CONSTRUCTION AS INDICATED ON THE PLANS.
- USING HANDHELD EQUIPMENT, THE CONCRETE SHALL BE CAREFULLY REMOVED FOR THE FULL DEPTH OF THE WALL OR SLAB AND FOR A MINIMUM DISTANCE FROM THE SAWCUT EQUAL TO THE LONGEST CONSTRUCTION. THIS EXTENSION SHALL BE 30 BAR DIAMETERS, UNLESS OTHERWISE SHOWN.
- EXISTING REINFORCEMENT SHALL BE CUT TO THE REQUIRED BAR EXTENSION.
- THE REMAINING CONCRETE MAY BE REMOVED BY ANY SUITABLE METHOD UPON APPROVAL OF THE ENGINEER, WHO SHALL BE THE SOLE JUDGE OF THE USE OF ANY CONCRETE REMOVAL EQUIPMENT, EXPLOSIVES, WRECKING BALL, OR OTHER SIMILAR DEVICES, WHICH ARE LIKELY TO DAMAGE THE CONCRETE TO BE LEFT IN PLACE, SHALL NOT BE USED.

STORMWATER POLLUTION CONTROL REQUIREMENTS FOR STORM DRAIN CONSTRUCTION

A. NOTES

- ERODED SEDIMENTS AND OTHER POLLUTANTS MUST BE RETAINED ON SITE AND MAY NOT BE TRANSPORTED FROM THE SITE VIA SHEET FLOW SWALES, AREA DRAINS, NATURAL DRAINAGE COURSES, OR WIND.
  - STOCKPILES OF EARTH AND OTHER CONSTRUCTION RELATED MATERIALS MUST BE PROTECTED FROM BEING TRANSPORTED FROM THE SITE BY THE FORCES OF WIND OR WATER.
  - FUELS, OILS, SOLVENTS, AND OTHER TOXIC MATERIALS MUST BE STORED IN ACCORDANCE WITH THEIR LISTING AND ARE NOT TO CONTAMINATE THE SOIL AND SURFACE WATERS. ALL APPROVED STORAGE CONTAINERS ARE TO BE PROTECTED FROM THE WEATHER. SPILLS MUST BE CLEANED UP IMMEDIATELY AND DISPOSED OF IN A PROPER MANNER. SPILLS MAY NOT BE WASHED INTO THE DRAINAGE SYSTEM.
  - EXCESS OR WASTE CONCRETE MAY NOT BE WASHED INTO THE PUBLIC WAY OR ANY OTHER DRAINAGE SYSTEM. PROVISIONS SHALL BE MADE TO RETAIN CONCRETE WASTES ON SITE UNTIL THEY CAN BE DISPOSED OF AS SOLID WASTE.
  - TRASH AND CONSTRUCTION-RELATED SOLID WASTES MUST BE DEPOSITED INTO A COVERED RECEPTACLE TO PREVENT CONTAMINATION OF RAINWATER AND DISPERSAL BY WIND.
  - SEDIMENTS AND OTHER MATERIALS MAY NOT BE TRACKED FROM THE SITE BY VEHICLE TRAFFIC. THE CONSTRUCTION ENTRANCE ROADWAYS MUST BE STABILIZED SO AS TO INHIBIT SEDIMENTS FORM BEING DEPOSITED INTO THE PUBLIC WAY. ACCIDENTAL DEPOSITIONS MUST BE SWEEPED UP IMMEDIATELY AND MAY NOT BE WASHED DOWN BY RAIN OR OTHER MEANS.
  - ANY SLOPES WITH DISTURBED SOILS OR DENUED OF VEGETATION MUST BE STABILIZED SO AS TO INHIBIT EROSION BY WIND AND WATER.
- B. THE FOLLOWING BMPs AS OUTLINED IN, BUT NOT LIMITED TO, THE BEST MANAGEMENT PRACTICE HANDBOOK, CALIFORNIA STORMWATER QUALITY TASK FORCE, SACRAMENTO, CALIFORNIA 2009, OR THE LATEST REVISED EDITION, MAY APPLY DURING CONSTRUCTION (ADDITIONAL MEASURES MAY BE REQUIRED IF DEEMED APPROPRIATE BY INSPECTOR):

EROSION CONTROL NON-STORMWATER MANAGEMENT

- EC1 - SCHEDULING
- EC2 - PRESERVATION OF EXISTING VEGETATION
- EC3 - HYDRAULIC MULCH
- EC4 - HYDROSEEDING
- EC5 - SOIL BINDERS
- EC6 - STRAW MULCH
- EC7 - GEOTEXTILES & MATS
- EC8 - WOOD MULCHING
- EC9 - EARTH DIKES AND DRAINAGE SWALES
- EC10 - VELOCITY DISSIPATION DEVICES
- EC11 - SLOPE DRAINS
- EC12 - STREAMBANK STABILIZATION
- EC13 - RESERVED
- EC15 - SOIL PREPARATION/ ROUGHENING
- EC16 - NON-VEGITATIVE STABILIZATION

- NS1 - WATER CONSERVATION PRACTICES
- NS2 - DEWATERING OPERATION
- NS3 - PAVING AND GRINDING OPERATIONS
- NS4 - TEMPORARY STREAM CROSSING
- NS5 - CLEAR WATER DIVERSION
- NS6 - ILLICIT CONNECTION DISCHARGE
- NS7 - POTABLE WATER IRRIGATION
- NS8 - VEHICLE AND EQUIPMENT CLEANING
- NS9 - VEHICLE AND EQUIPMENT FUELING
- NS10 - VEHICLE AND EQUIPMENT MAINTENANCE
- NS11 - PILE DRIVING OPERATIONS
- NS12 - CONCRETE CURING
- NS13 - CONCRETE FINISHING
- NS14 - MATERIAL OVER WATER
- NS15 - DEMOLITION ADJACENT TO WATER
- NS16 - TEMPORARY BATCH PLANTS

TEMPORARY SEDIMENT CONTROL

- SE1 - SILT FENCE
- SE2 - SEDIMENT BASIN
- SE3 - SEDIMENT TRAP
- SE4 - CHECK DAM
- SE5 - FIBER ROLLS
- SE6 - GRAVEL BAG BERM
- SE7 - STREET SWEEPING AND VACUUMING
- SE8 - SANDBAG BARRIER
- SE9 - STRAW BALE BARRIER
- SE10 - STORM DRAIN INLET PROTECTION
- SE11 - ACTIVE TREATMENT SYSTEMS
- SE12 - TEMPORARY SILT DIKE
- SE13 - COMPOST SOCKS AND BERMS
- SE14 - BIOFILTER BAGS

TEMPORARY SEDIMENT CONTROL

- WM1 - MATERIAL DELIVERY AND STORAGE
- WM2 - MATERIAL USE
- WM3 - STOCKPILE MANAGEMENT
- WM4 - SPILL PREVENTION AND CONTROL
- WM5 - SOLID WASTE MANAGEMENT
- WM6 - HAZARDOUS WASTE MANAGEMENT
- WM7 - CONTAMINATION SOIL MANAGEMENT
- WM8 - CONCRETE WASTE MANAGEMENT
- WM9 - SANITARY / SEPTIC WASTE MANAGEMENT
- WM10 - LIQUID WASTE MANAGEMENT

EQUIPMENT TRACKING CONTROL

- TC1 - STABILIZED CONSTRUCTION ENTRANCE / EXIT
- TC2 - STABILIZED CONSTRUCTION ROADWAY
- TC3 - ENTRANCE / OUTLET TIRE WASTE

WIND EROSION CONTROL

- WE1 - WIND EROSION CONTROL

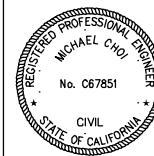
1		50%PS&E		9/9/11
2		75%PS&E		2/28/12
3		90%PS&E		6/8/12
4		100%PS&E		10/5/12
REV	SYMBOL	DESCRIPTION OF CHANGE	RCE	DATE

PREPARED BY:



©2012 KIMLEY-HORN AND ASSOCIATES, INC.  
6800 Owensmouth Avenue, Suite 410, Los Angeles CA  
Tel (818) 227-2790 Fax (916) 608-0885

MICHAEL CHOI R.C.E. 67851 DATE



REVIEWED BY:

CHARMAINE YAMBAO DATE  
ASSOCIATE CIVIL ENGINEER

APPROVED BY:

RAMIRO ADEVA DATE  
DIRECTOR OF PUBLIC WORKS/CITY ENGINEER



AGOURA ROAD WIDENING  
STORM DRAIN PLANS SD-2

DRAWN BY: RC CHECKED BY: JS/MC KHA JOB NUMBER 099083017

100% SUBMITTAL - OCTOBER 2012