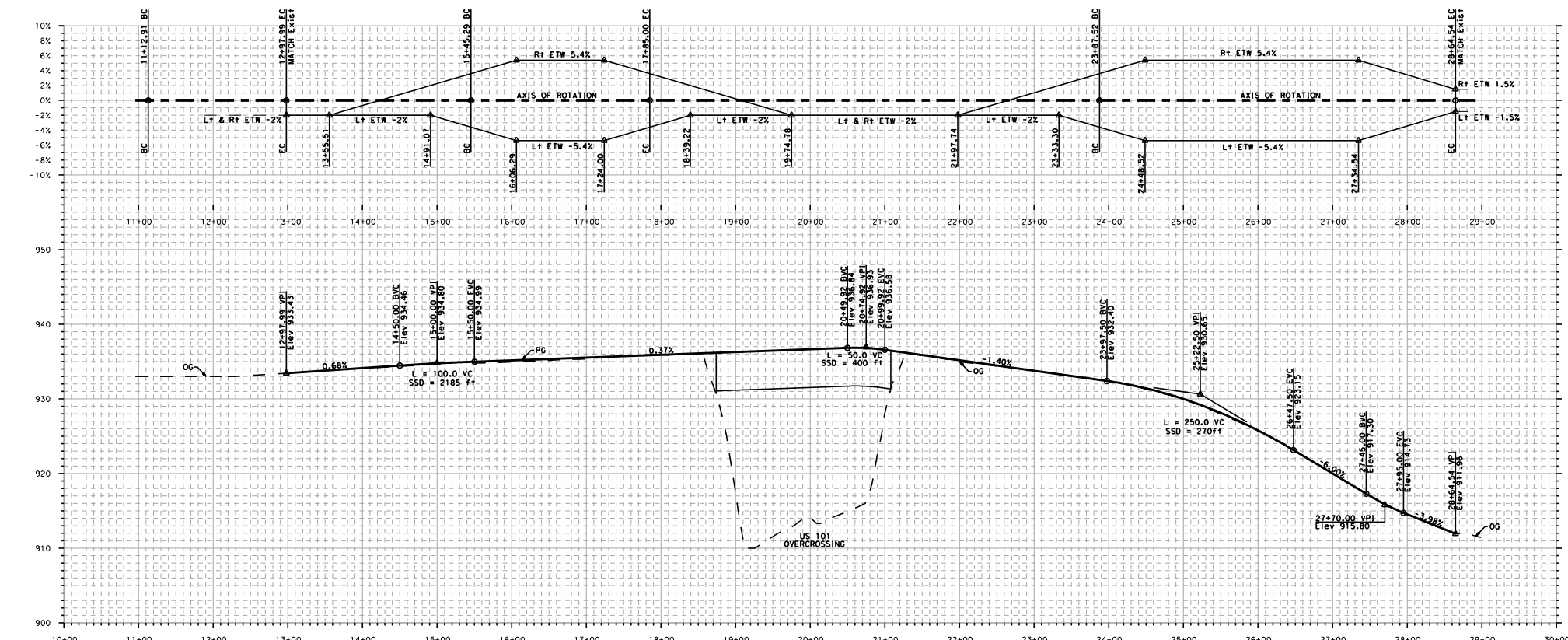
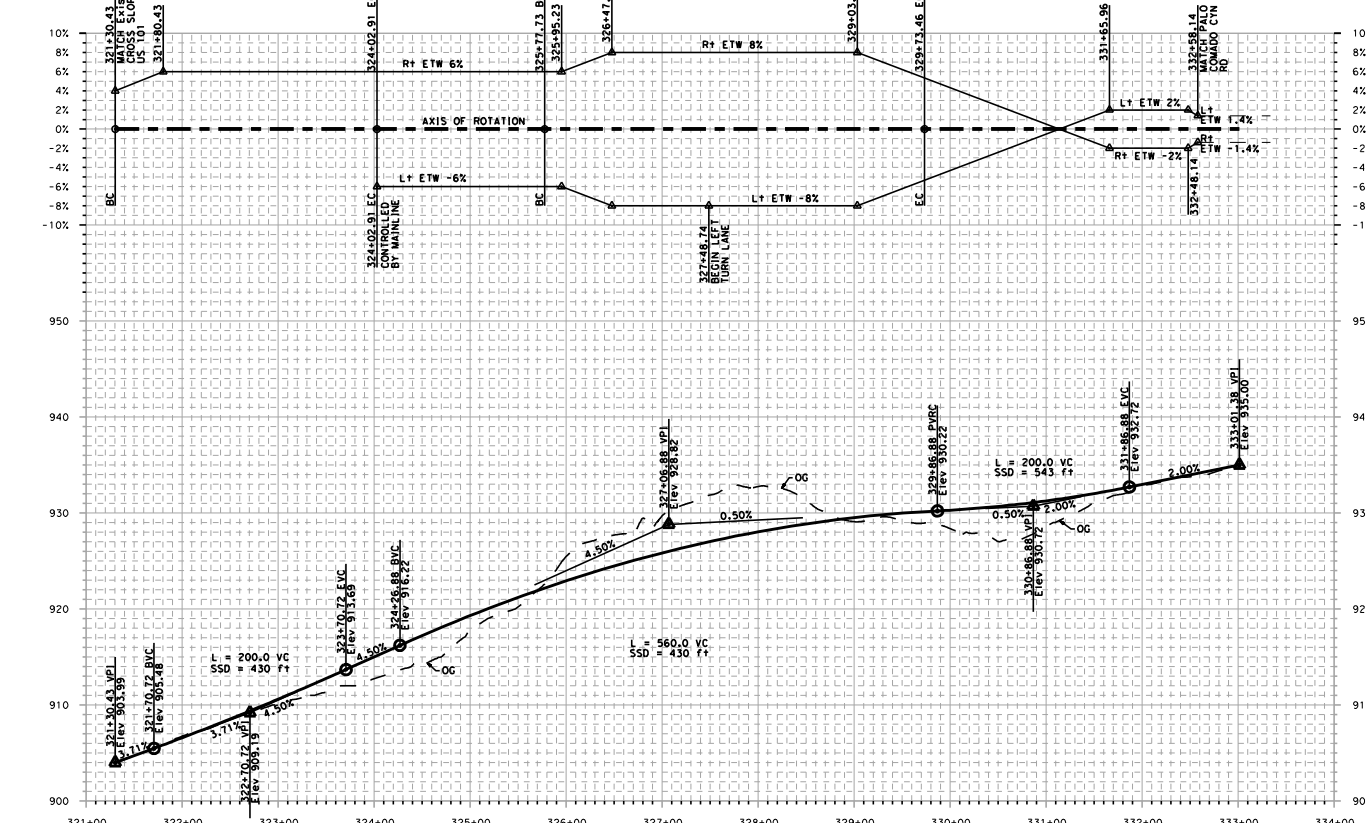


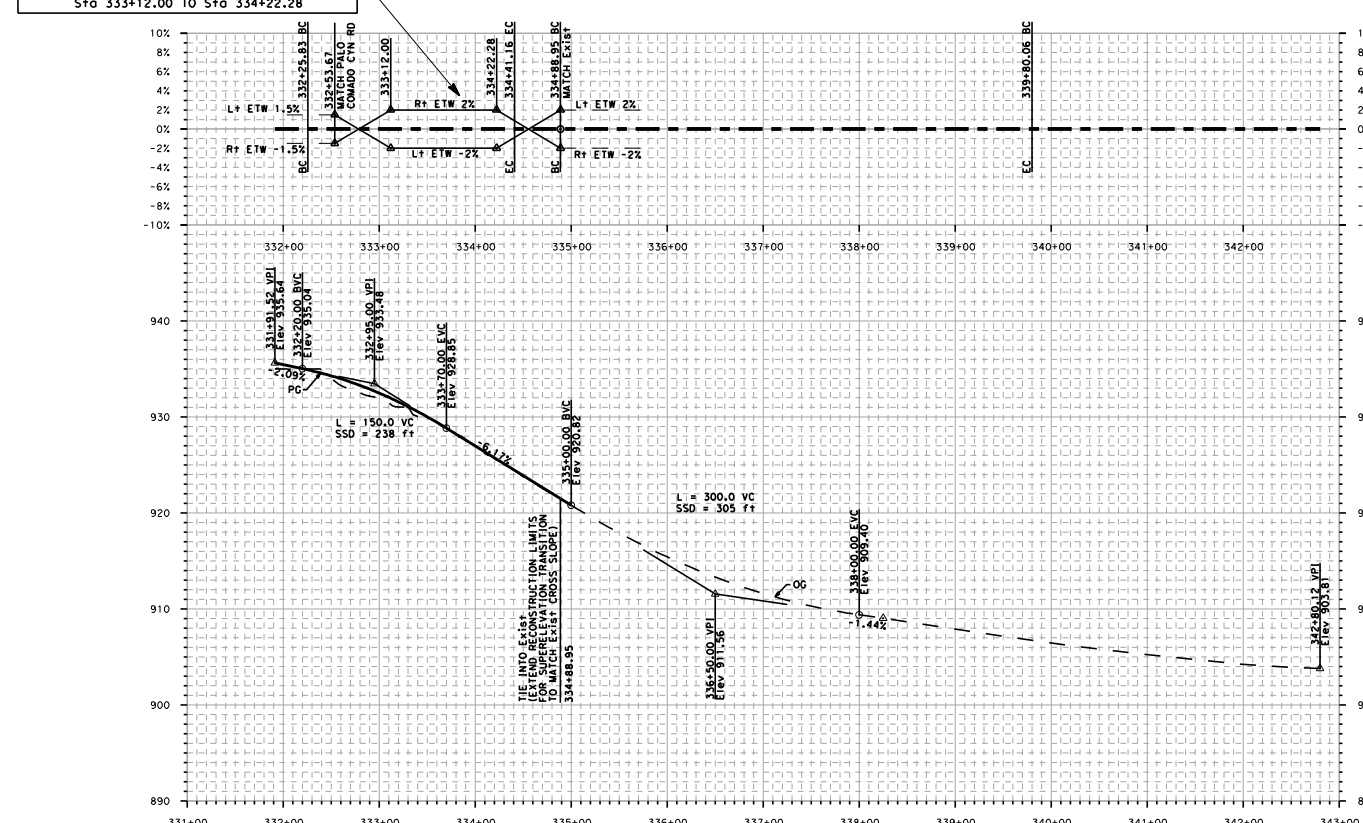
Palo Comado Canyon Road



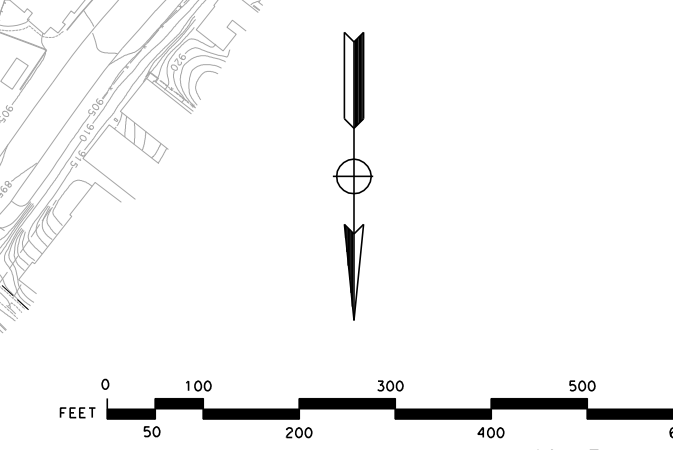
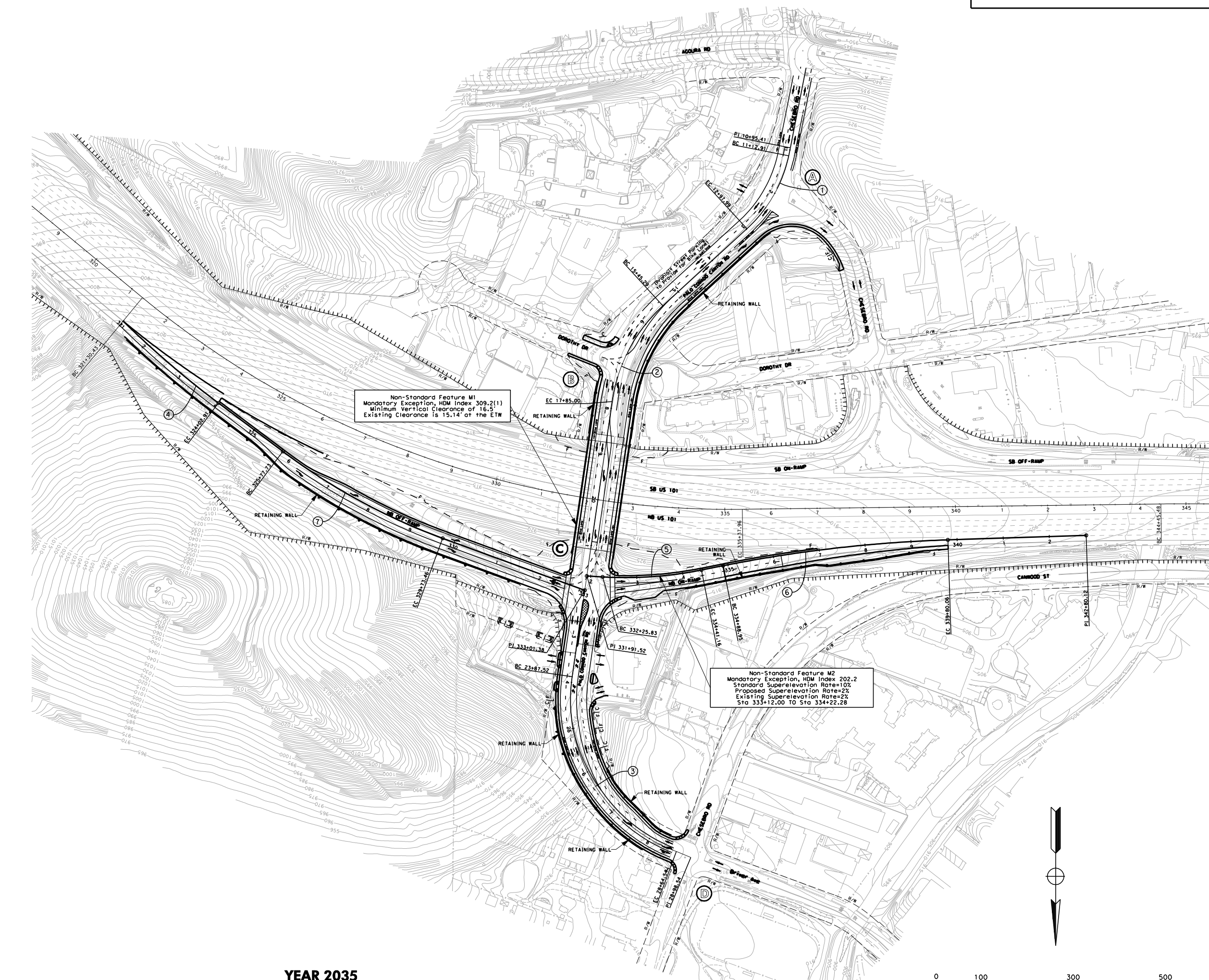
Northbound Off-Ramp



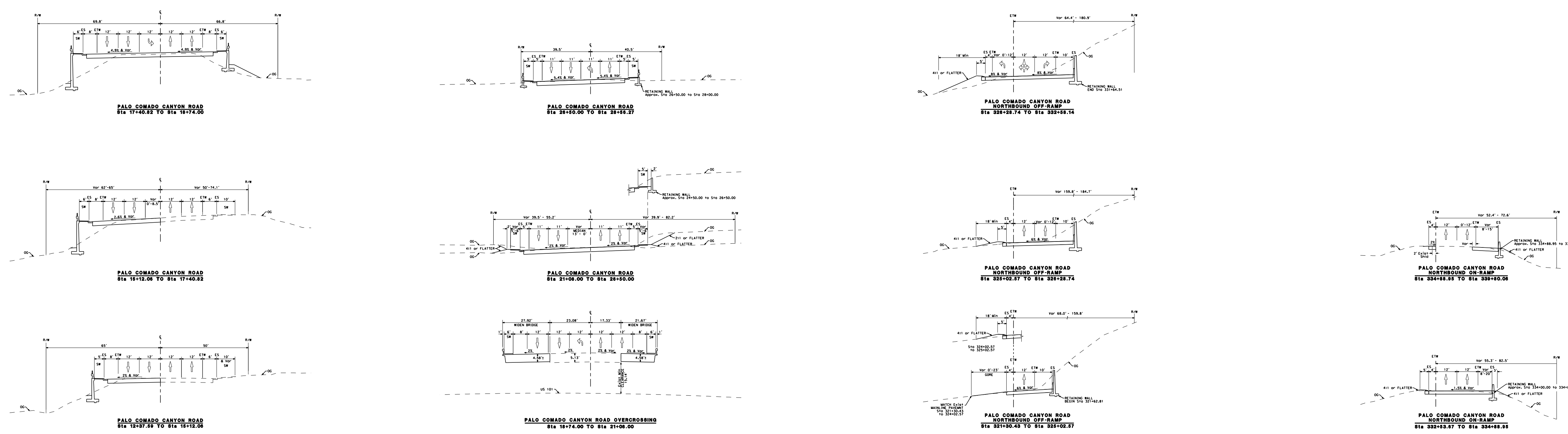
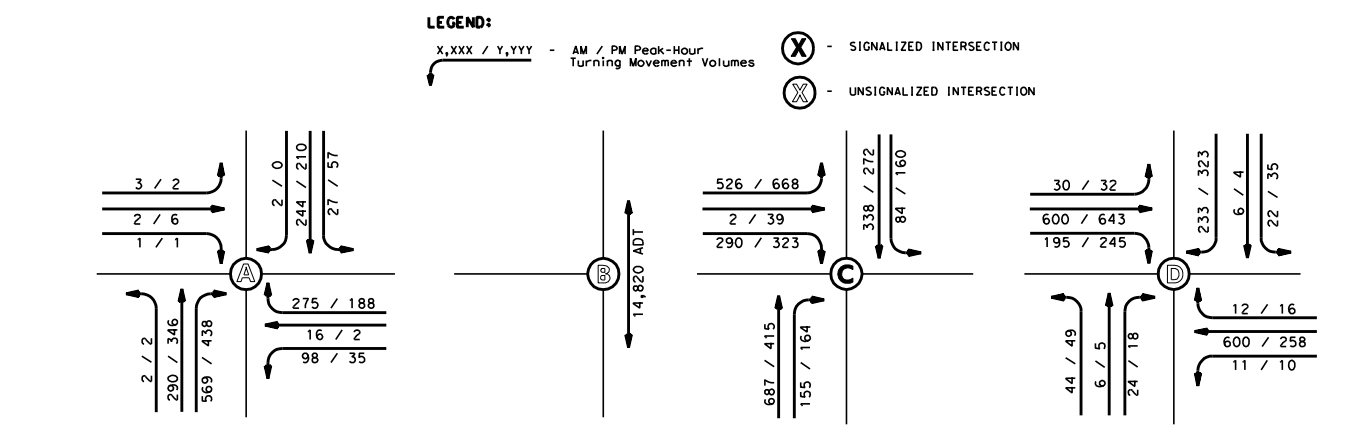
Northbound On-Ramp



NO.	R	Δ	T	L
1	300.00	33° 20' 55.00"	95.59	185.08
2	350.00	18° 15' 18.80"	283.87	477.02
3	850.00	14° 50' 54.00"	108.25	215.33
4	300.00	8° 57' 48.00"	246.12	491.13
5	1350.00	18° 41' 43.67"	39.25	325.13



YEAR 2035 INTERSECTION PEAK-HOUR TRAFFIC VOLUMES



Palo Comado Canyon Road

Northbound Off-Ramp

Northbound On-Ramp

Palo Comado Canyon Road/ US 101 Interchange Improvements

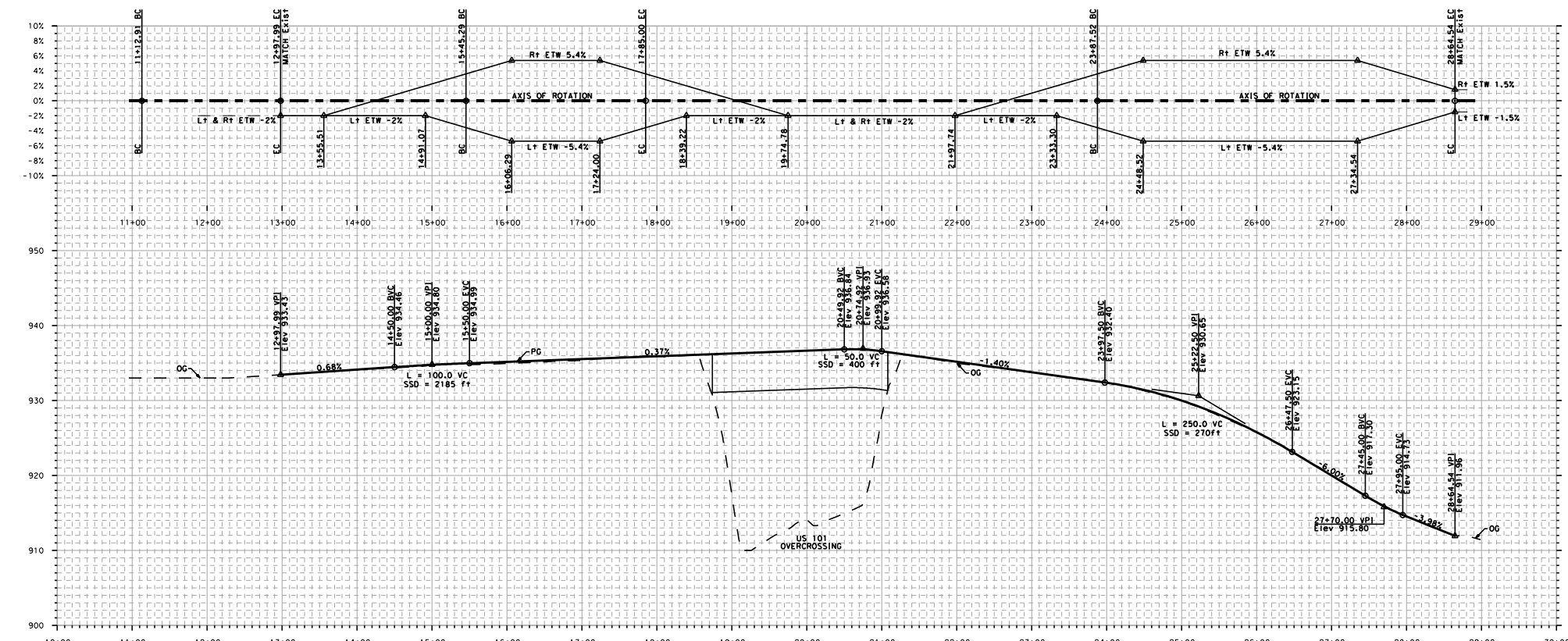
MANDATORY DESIGN EXCEPTION FACT SHEET - GEOMETRIC APPROVAL DRAWINGS

March 2011
 Updated July 2012
 FIGURE 2

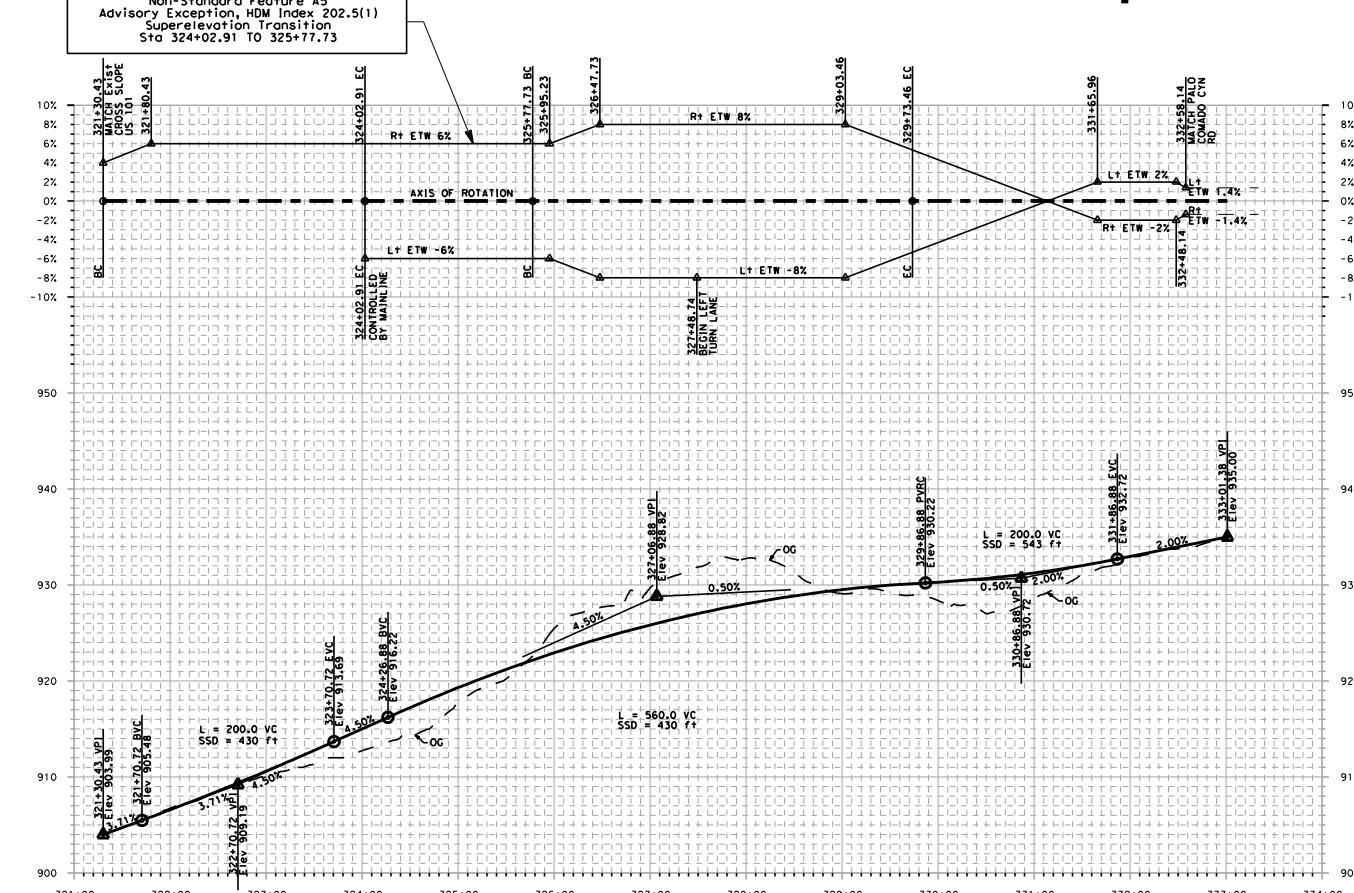
REGISTERED CIVIL ENGINEER
 PLANS APPROVAL DATE
 CITY OF AGOURA HILLS
 30001 LADYFACE COURT
 AGOURA HILLS, CA 91301
 KIMLEY-HORN AND ASSOCIATES, INC.
 5550 TOPANGA CANYON BLVD, SUITE 250
 WOODLAND HILLS, CA 91367
 THE STATE OF CALIFORNIA HAS APPROVED THE DESIGN OF THIS PROJECT AS SHOWN ON THESE PLANS AND THE ENGINEER'S SEAL IS VALID FOR THE PROJECT AND THE DATE OF THE PLAN SHEET.
 To go to the CAPRS and click on the link: www.caprs.com

RECOMMENDED: DATE: _____
 CONCURRED: DATE: _____
 APPROVED: DATE: _____

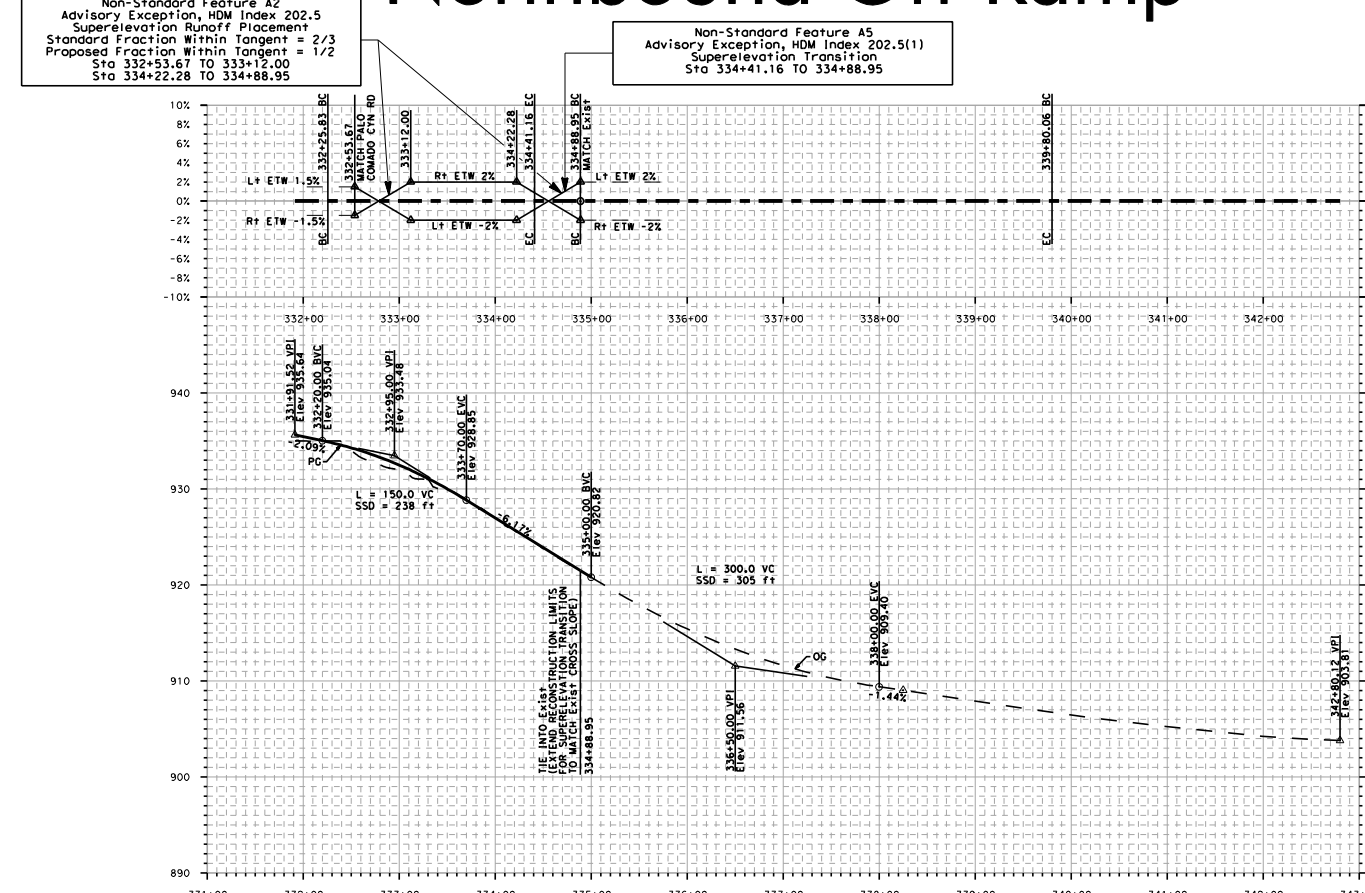
Palo Comado Canyon Road



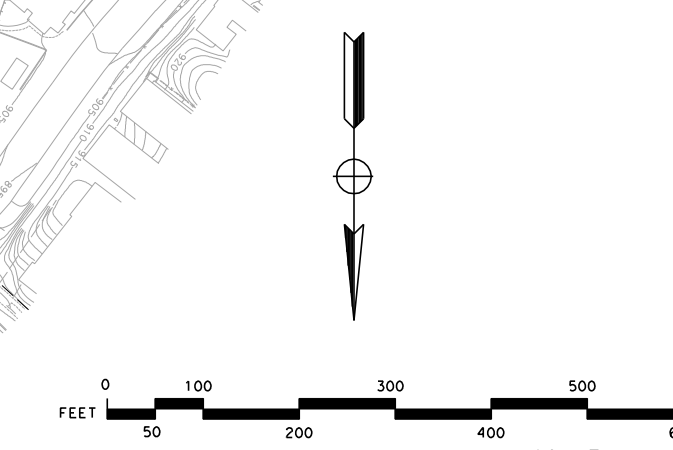
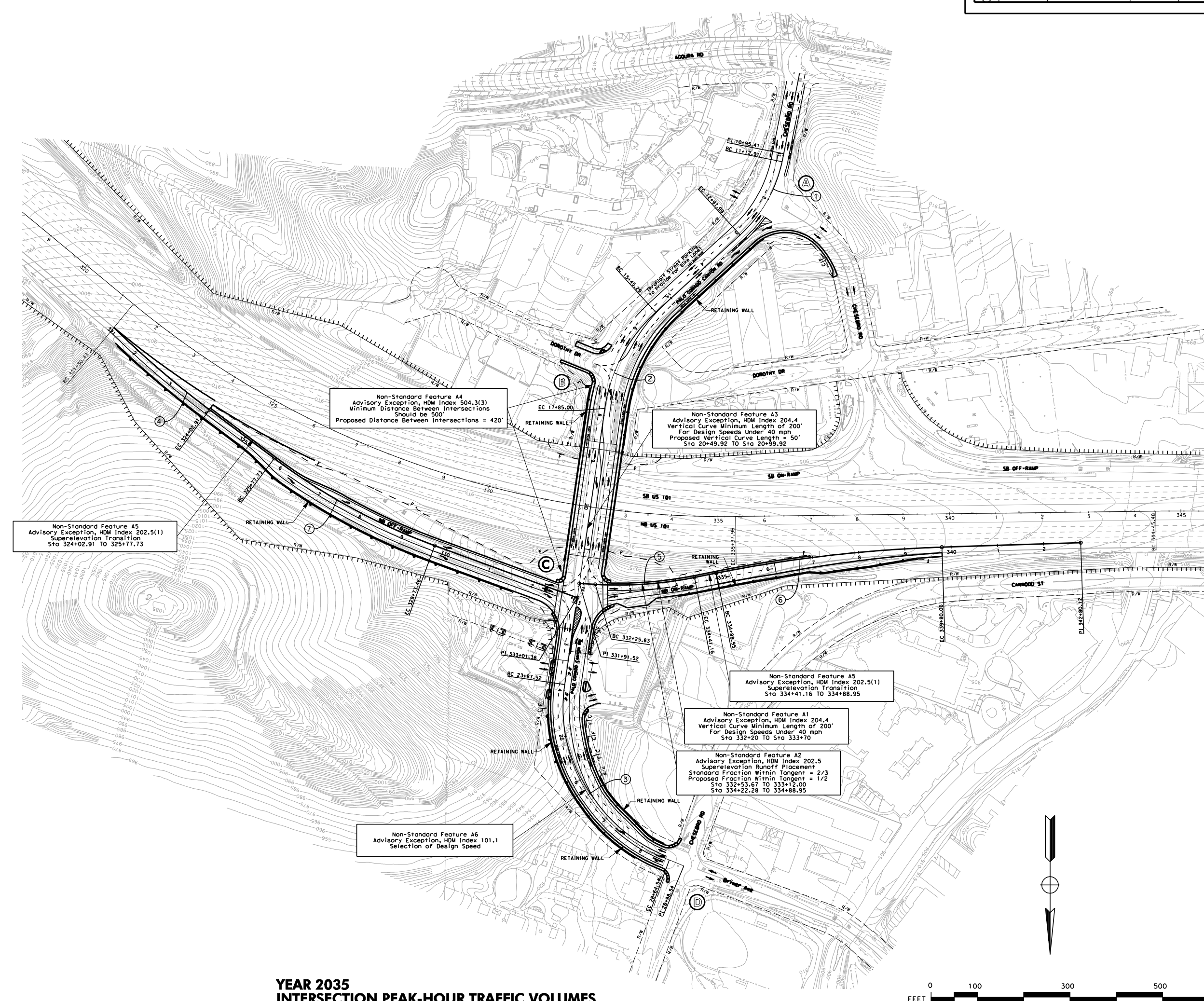
Northbound Off-Ramp



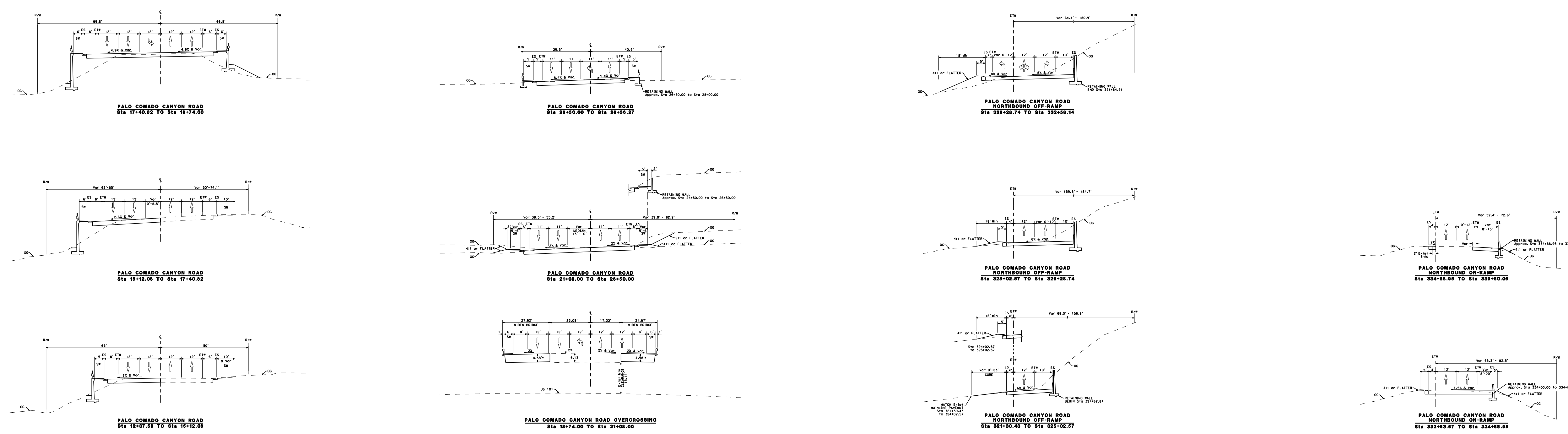
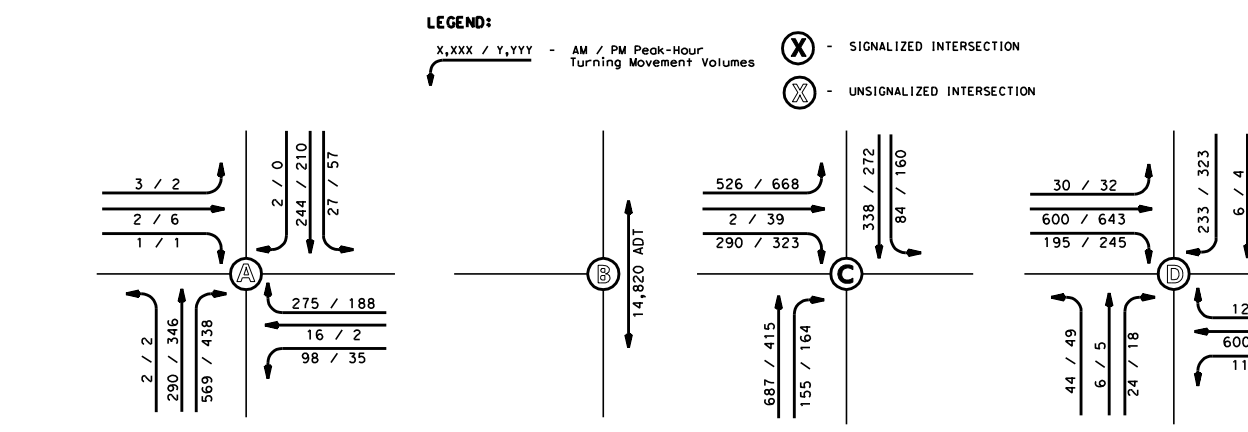
Northbound On-Ramp



NO.	R	Δ	T	L
CO	300.00	33°20'55.00"	95.59	185.08
CO	350.00	33°12'25.00"	124.27	239.73
CO	350.00	18°51'18.80"	283.87	477.02
CO	205.00	17°50'54.00"	135.44	272.48
CO	850.00	14°50'54.00"	108.25	215.33
CO	300.00	8°27'48.00"	246.12	491.13
CO	1350.00	18°41'43.67"	39.25	325.13



YEAR 2035 INTERSECTION PEAK-HOUR TRAFFIC VOLUMES



Palo Comado Canyon Road

Northbound Off-Ramp

Northbound On-Ramp

Palo Comado Canyon Road/ US 101 Interchange Improvements

ADVISORY DESIGN EXCEPTION FACT SHEET - GEOMETRIC APPROVAL DRAWINGS

March 2011
Updated July 2012
FIGURE 2

STATE OF CALIFORNIA - DEPARTMENT OF TRANSPORTATION
 PROJECT NUMBER
 CALCULATED BY
 CHECKED BY
 DATE
 REVISIONS
 DATE
 REVIEWED BY

REGISTERED CIVIL ENGINEER
 PLANS APPROVAL DATE
 CITY OF AGOURA HILLS
 30001 LADYFACES COURT
 AGOURA HILLS, CA 91301
 KIMLEY-HORN AND ASSOCIATES, INC.
 5550 TORANCA CANYON BLVD, SUITE 250
 WOODLAND HILLS, CA 91367
 THE STATE OF CALIFORNIA HAS REVIEWED THESE PLANS AND APPROVES THEM FOR THE ACCOUNT OF THE REGISTERED CIVIL ENGINEER'S SEAL AND SIGNATURE.
 To get to the CAPS and other files go to: <http://www.kimley-horn.com>
 RECOMMENDED: DATE: _____
 CONCEPT: DATE: _____
 CONCEPT: DATE: _____
 APPROVED: DATE: _____
 OFFICE CHIEF, DESIGN

Dist	COUNTY	ROUTE	POST MILES TOTAL PROJECT	SHEET No.	TOTAL SHEETS
07	LA	101	33.0 / 34.4		

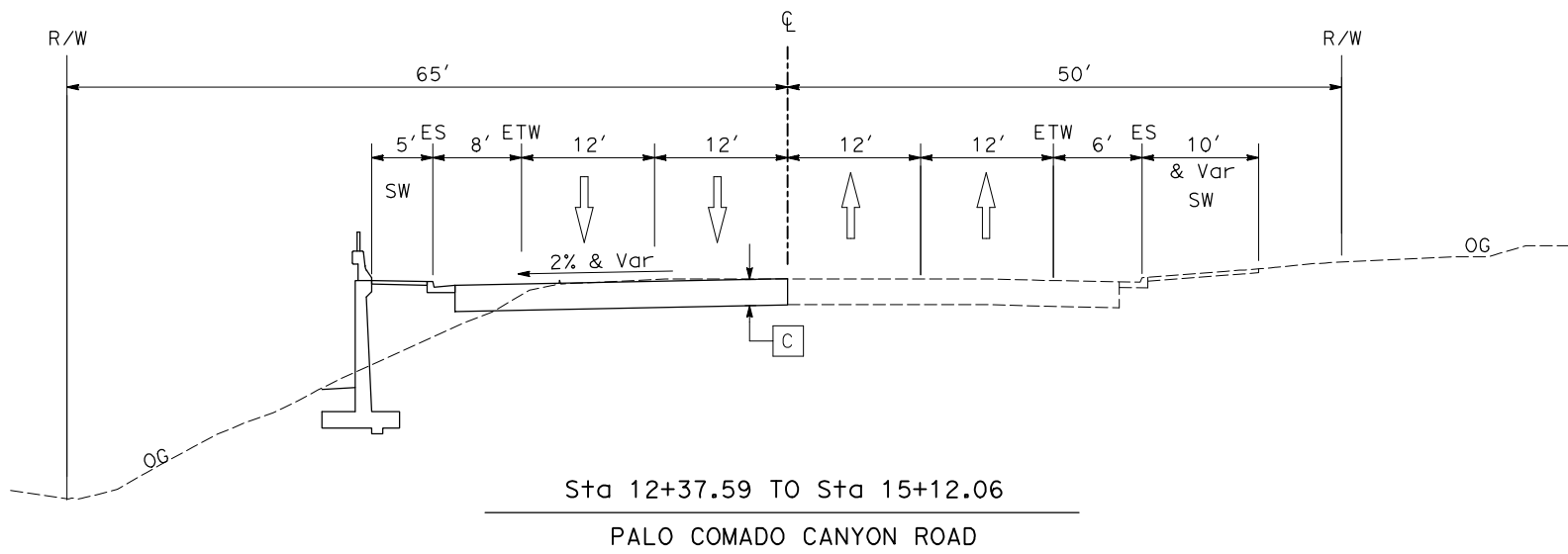
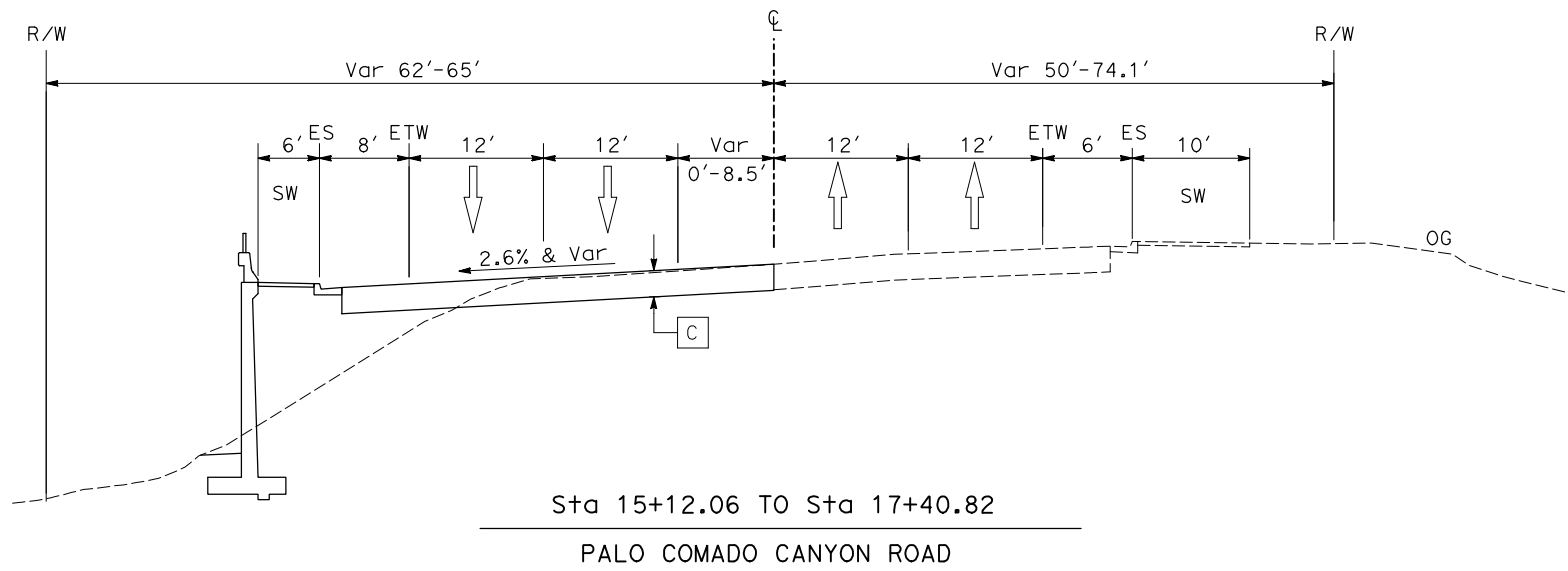
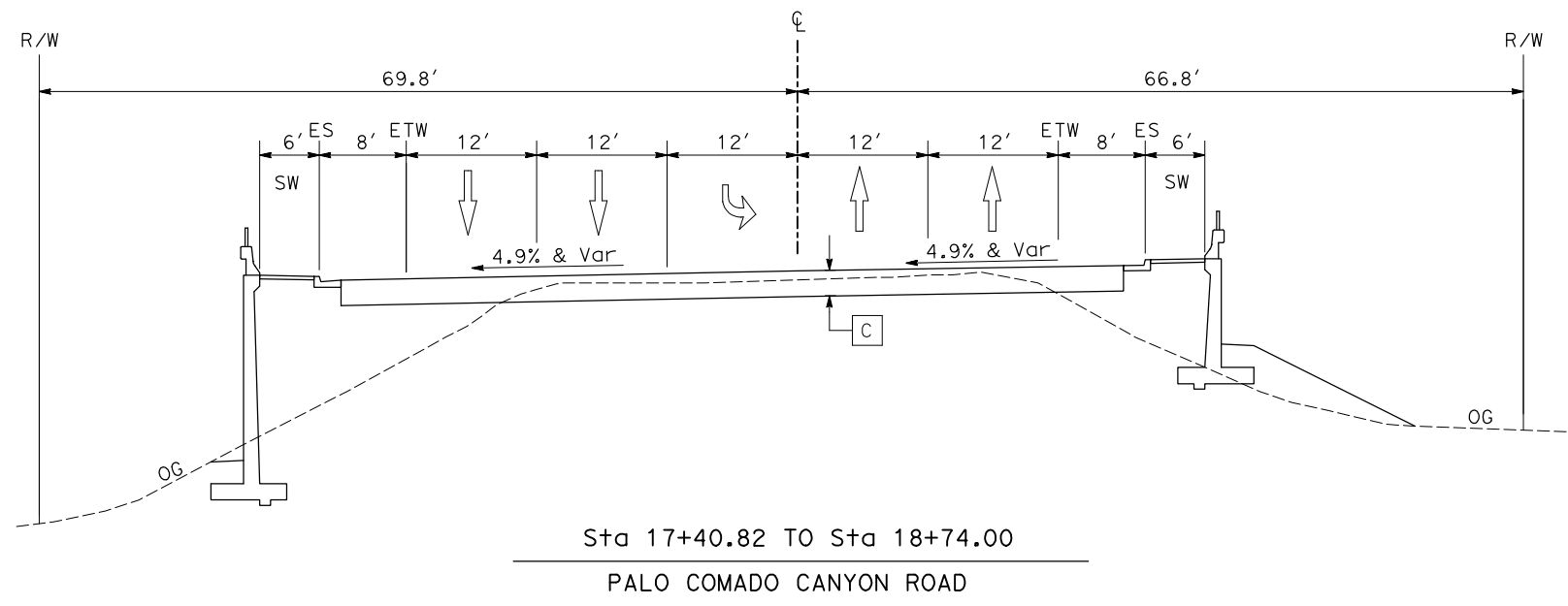
REGISTERED CIVIL ENGINEER DATE _____

PLANS APPROVAL DATE _____

THE STATE OF CALIFORNIA OR ITS OFFICERS OR AGENTS SHALL NOT BE RESPONSIBLE FOR THE ACCURACY OR COMPLETENESS OF SCANNED COPIES OF THIS PLAN SHEET.

CITY OF AGOURA HILLS
30001 LADYFACE COURT
AGOURA HILLS, CA 91301

KIMLEY-HORN & ASSOCIATES, INC.
5550 TOPANGA CANYON BLVD,
SUITE 250
WOODLAND HILLS, CA 91367



PAVEMENT STRUCTURAL SECTIONS

	DESIGN TRAFFIC INDEX	DESIGN R-VALUE	MINIMUM FLEXIBLE PAVEMENT SECTION		MINIMUM RIGID PAVEMENT SECTION
[A] *	11 (40 YEAR DESIGN LIFE)	15	OPTION 1 0.20' RHMA-G 0.35' HMA-B 0.55' LCB 1.05' AB CLASS 3	OPTION 2 0.35' HMA-B 0.55' LCB 1.05' AB CLASS 3	0.85' JPCP 0.40' LCB 0.60' AB CLASS 3
[B] *	11 (40 YEAR DESIGN LIFE)	15	0.25' HMA-B ---- GPI 0.30' HMA-B 0.55' LCB 1.05' AB CLASS 3		N/A
[C] *	11 (40 YEAR DESIGN LIFE)	15	0.55' HMA-B 0.55' LCB 1.05' AB CLASS 3		0.85' JPCP 0.40' LCB 0.60' AB CLASS 3

* AS PER PRELIMINARY MATERIALS REPORT DATED FEBRUARY 18, 2011

BUILD ALTERNATIVE (PREFERRED)
TYPICAL CROSS SECTIONS

NO SCALE **X-1**

STATE OF CALIFORNIA - DEPARTMENT OF TRANSPORTATION
Caltrans®

REVISOR: _____
DATE: _____

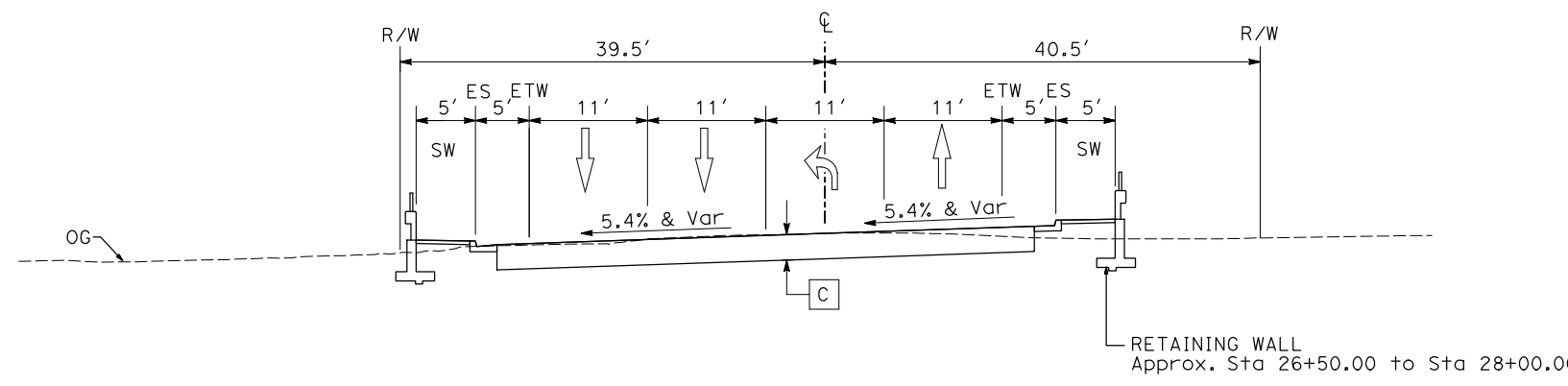
CHECKED BY: _____
DESIGNED BY: _____

CONSULTANT FUNCTIONAL SUPERVISOR: _____

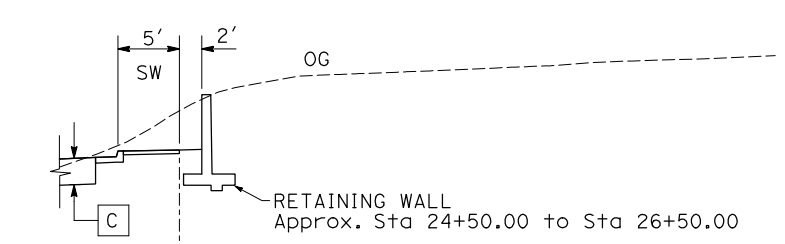
LAST REVISION: _____ DATE PLOTTED => 7/30/2012
07-26-11 TIME PLOTTED => 1:40:10 PM

Dist	COUNTY	ROUTE	POST MILES TOTAL PROJECT	SHEET No.	TOTAL SHEETS
07	LA	101	33.0 / 34.4		

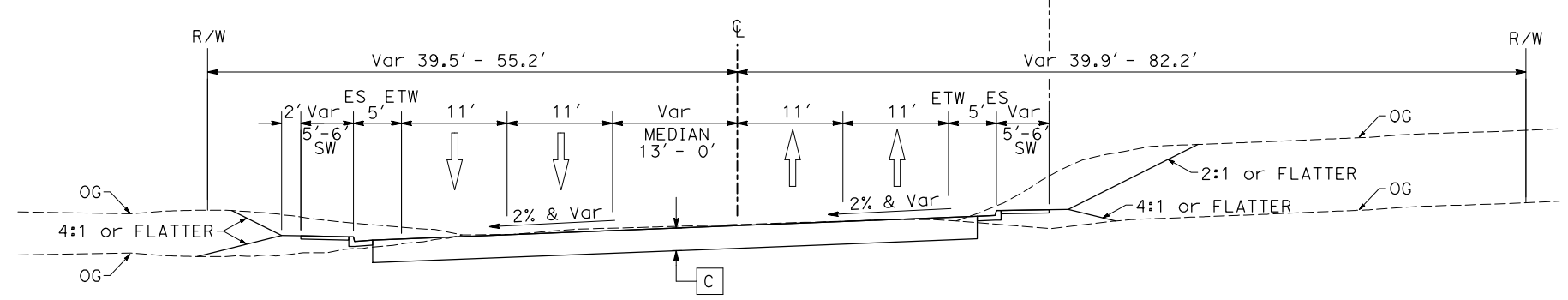
REGISTERED CIVIL ENGINEER	DATE
PLANS APPROVAL DATE	
<small>THE STATE OF CALIFORNIA OR ITS OFFICERS OR AGENTS SHALL NOT BE RESPONSIBLE FOR THE ACCURACY OR COMPLETENESS OF SCANNED COPIES OF THIS PLAN SHEET.</small>	
CITY OF AGOURA HILLS 30001 LADYFACE COURT AGOURA HILLS, CA 91301	KIMLEY-HORN & ASSOCIATES, INC. 5550 TOPANGA CANYON BLVD, SUITE 250 WOODLAND HILLS, CA 91367



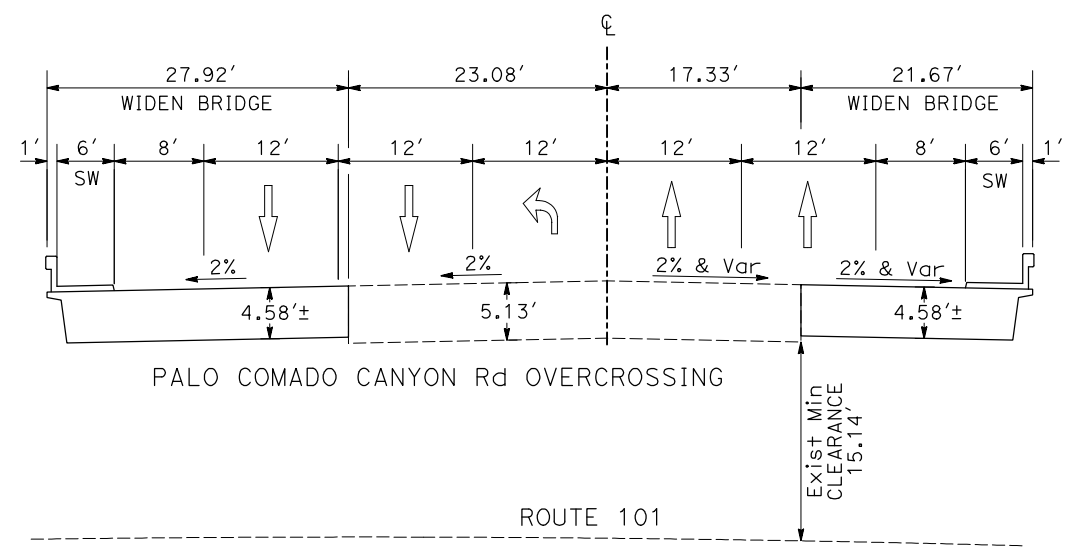
Sta 26+50.00 TO Sta 28+56.27
PALO COMADO CANYON ROAD



RETAINING WALL
Approx. Sta 24+50.00 to Sta 26+50.00



Sta 21+08.00 TO Sta 26+50.00
PALO COMADO CANYON ROAD



Sta 18+74.00 TO Sta 21+08.00
PALO COMADO CANYON ROAD

BUILD ALTERNATIVE (PREFERRED)
TYPICAL CROSS SECTIONS

NO SCALE

X-2

STATE OF CALIFORNIA - DEPARTMENT OF TRANSPORTATION
 CONSULTANT FUNCTIONAL SUPERVISOR
 CALCULATED-DRAWN BY
 CHECKED BY
 REVISOR BY
 DATE REVISOR



Dist	COUNTY	ROUTE	POST MILES TOTAL PROJECT	SHEET No.	TOTAL SHEETS
07	LA	101	33.0 / 34.4		

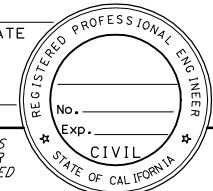
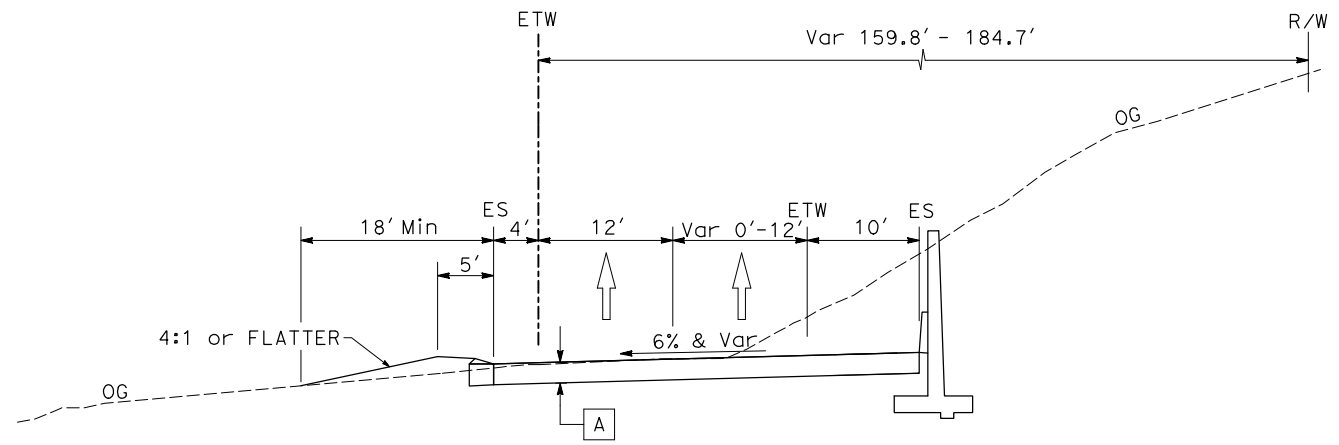
REGISTERED CIVIL ENGINEER DATE _____

PLANS APPROVAL DATE _____

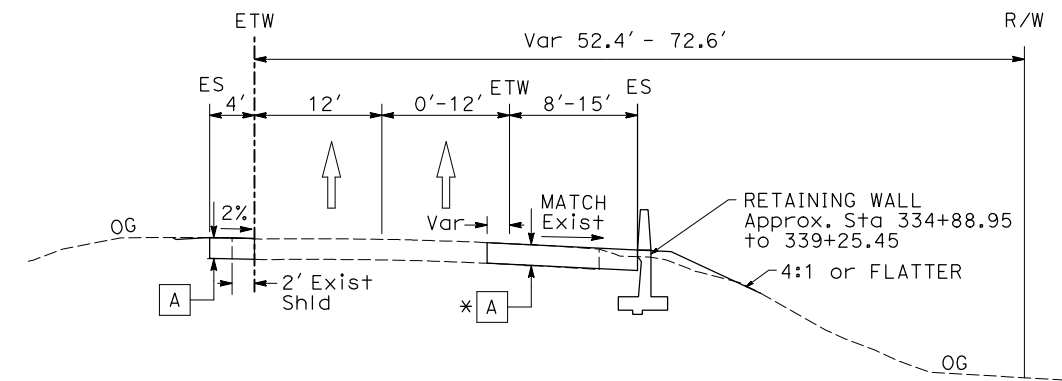
THE STATE OF CALIFORNIA OR ITS OFFICERS OR AGENTS SHALL NOT BE RESPONSIBLE FOR THE ACCURACY OR COMPLETENESS OF SCANNED COPIES OF THIS PLAN SHEET.

CITY OF AGOURA HILLS 30001 LADYFACE COURT AGOURA HILLS, CA 91301

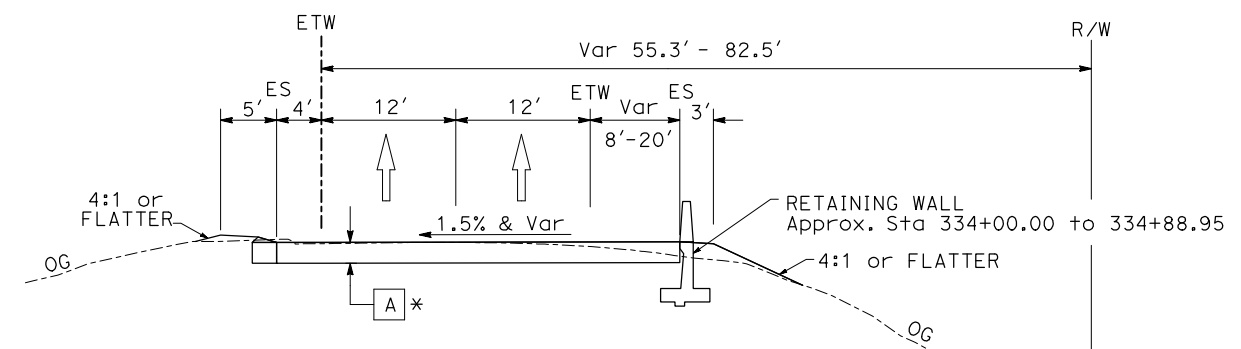
KIMLEY-HORN & ASSOCIATES, INC. 5550 TOPANGA CANYON BLVD, SUITE 250 WOODLAND HILLS, CA 91367

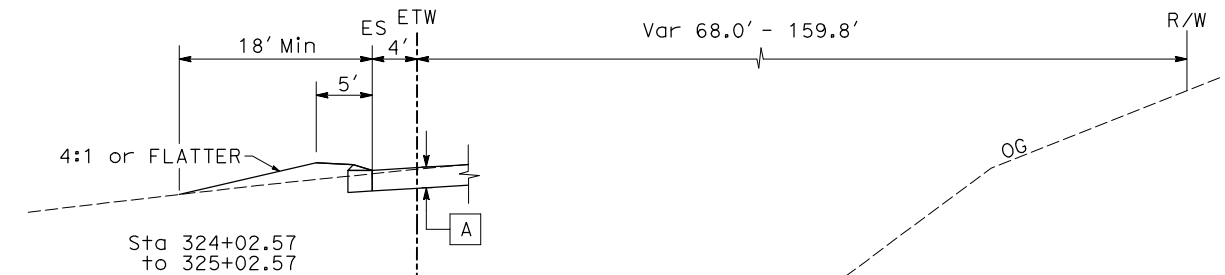
Sta 325+02.57 TO Sta 326+28.74
NORTHBOUND OFF-RAMP



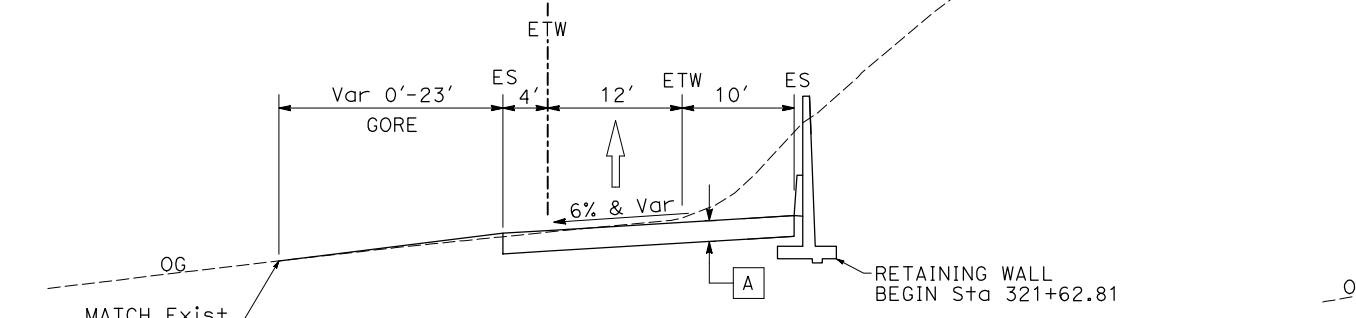
Sta 334+88.95 TO Sta 339+80.06
NORTHBOUND ON-RAMP



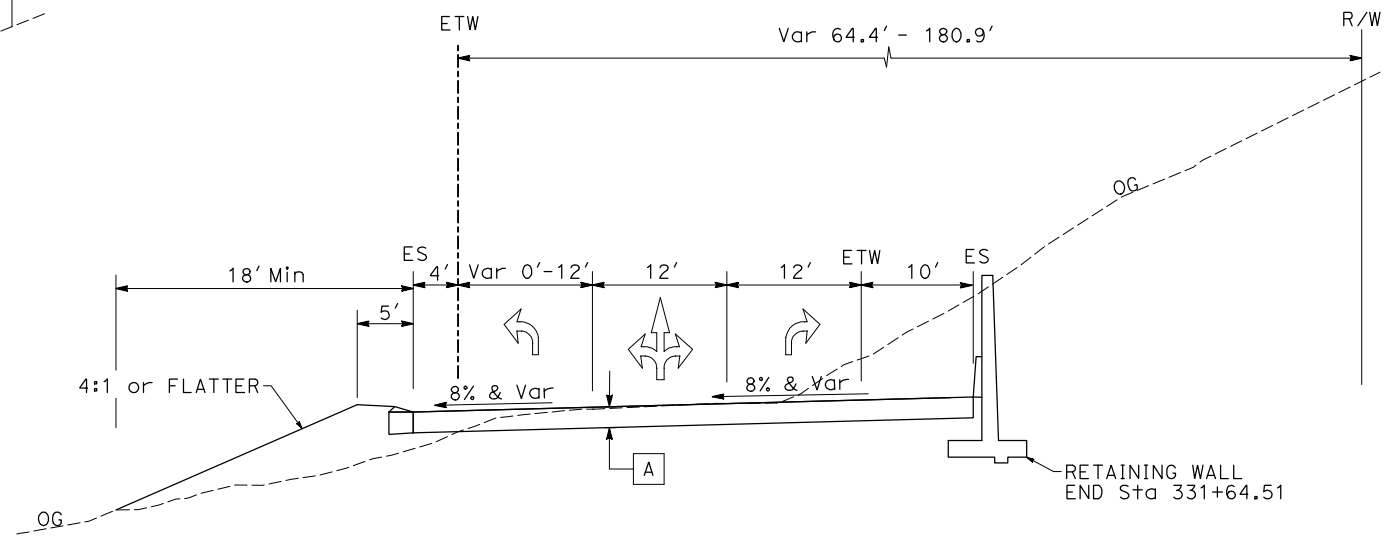
Sta 332+53.67 TO Sta 334+88.95
NORTHBOUND ON-RAMP



Sta 324+02.57 TO Sta 325+02.57



Sta 321+30.43 TO Sta 325+02.57
NORTHBOUND OFF-RAMP



Sta 326+28.74 TO Sta 332+58.14
NORTHBOUND OFF-RAMP

BUILD ALTERNATIVE (PREFERRED)
TYPICAL CROSS SECTIONS

NO SCALE **X-3**

* USE STRUCTURAL SECTION **B** FOR MVP AND CHP ENFORCEMENT AREAS.

STATE OF CALIFORNIA - DEPARTMENT OF TRANSPORTATION
EtCaltrans

USERNAME => miguel.ramirez
DGN FILE => Typical Section 3.dgn

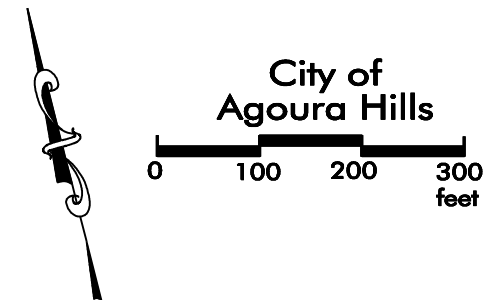
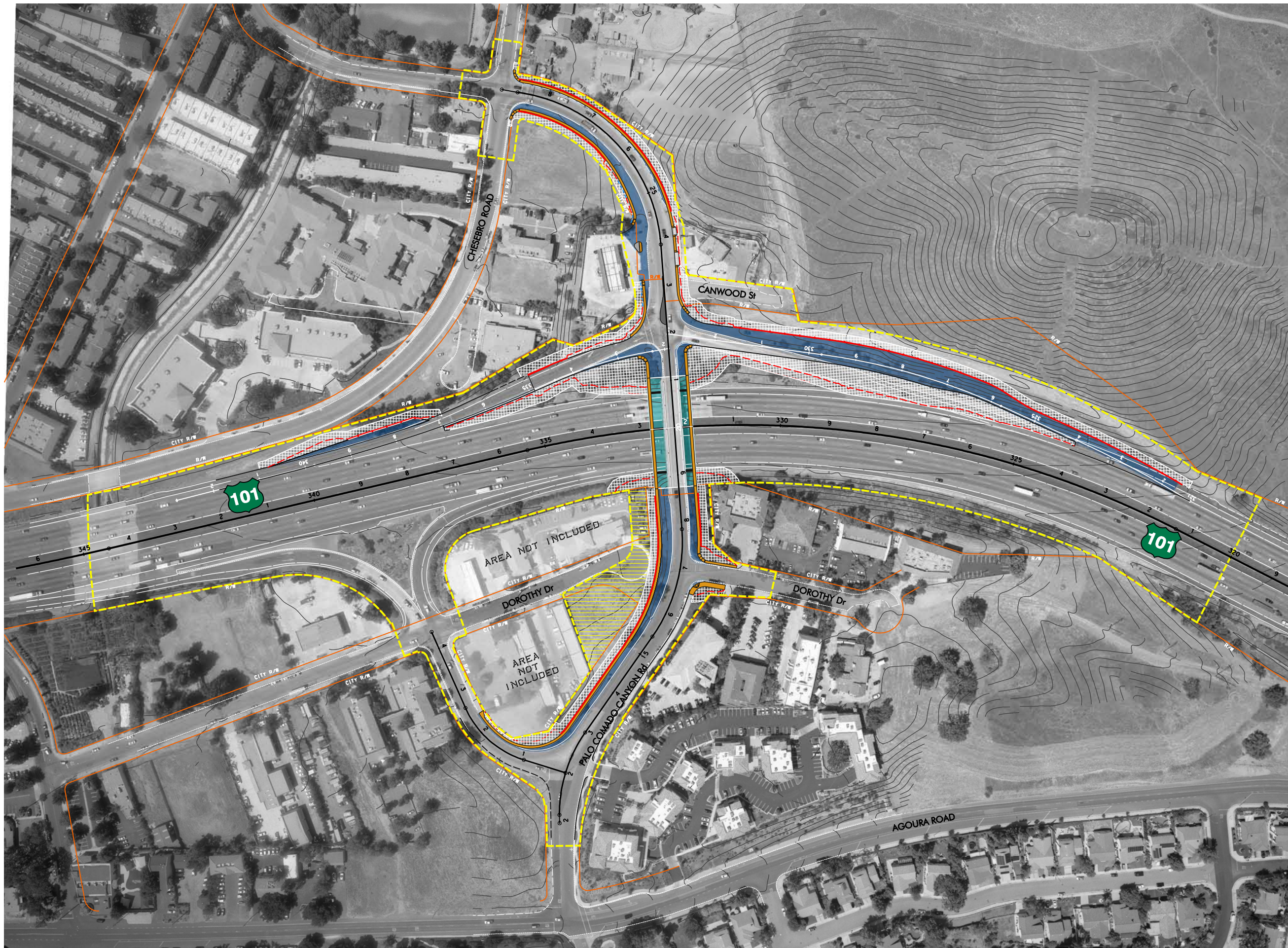
RELATIVE BORDER SCALE IS IN INCHES



UNIT 1821

PROJECT NUMBER & PHASE 0700001840 0 PHASE

LAST REVISION DATE PLOTTED => 10/29/2012
07-26-11 TIME PLOTTED => 2:01:36 PM



- Legend:**
- New Pavement Section
 - Widened Bridge Section
 - Widened Bridge Bent
 - Possible Limits of Disturbance
 - Possible Staging Area
 - Grading Limits
 - Cut & Fill Line
 - Retaining Wall
 - New Sidewalk

**Proposed
Build Alternative**