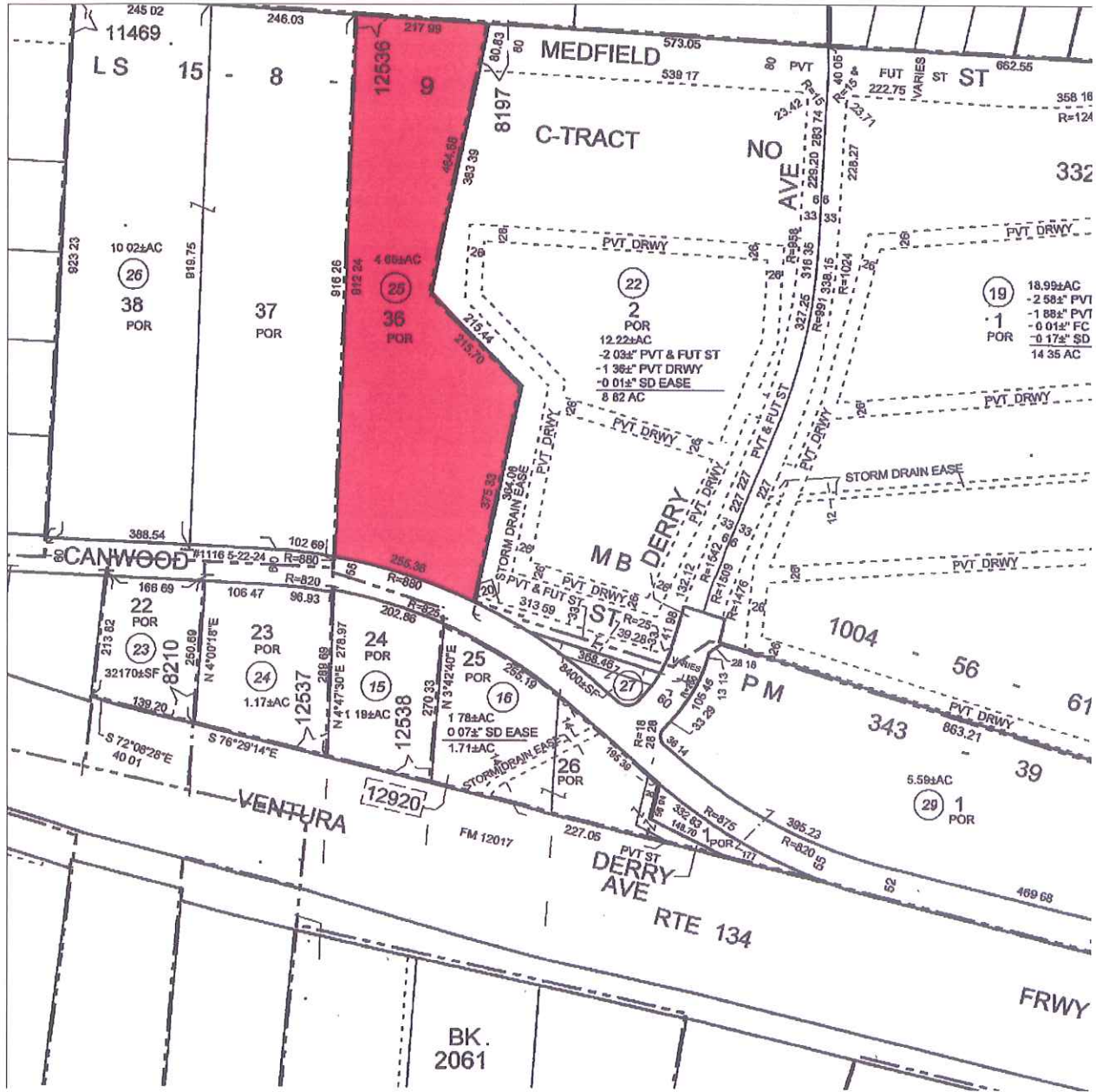


Canwood Agoura Hills



Assessor's Parcel Map
APN 2048-012-025



Commercial Real Estate Services, Worldwide.

No warranty, express or implied, is made as to the accuracy of the information contained herein. This information is submitted subject to errors, omissions, change of price, rental or other conditions, withdrawal without notice, and is subject to any special listing conditions imposed by our principals. Cooperating brokers, buyers, tenants and other parties who receive this document should not rely on it, but should use it as a starting point of analysis, and should independently confirm the accuracy of the information contained herein through a due diligence review of the books, records, files and documents that constitute reliable sources of the information described herein. ©This copyrighted report contains research licensed to NAI Capital, inc - 108480.

For information, please contact your exclusive listing agent:

Jack Dwyer
Senior Vice President
jdwyer@naicapital.com

2555 Townsgate Road, Suite 320
Westlake Village CA 91361
tel 818 865 1200 ■ 805 446 2400
fax 805 446 2401

Canwood Agoura Hills



Topographic Map
(Contours Every Five Feet)

NAI Capital

Commercial Real Estate Services, Worldwide.

No warranty, express or implied, is made as to the accuracy of the information contained herein. This information is submitted subject to errors, omissions, change of price, rental or other conditions, withdrawal without notice, and is subject to any special listing conditions imposed by our principals. Cooperating brokers, buyers, tenants and other parties who receive this document should not rely on it, but should use it as a starting point of analysis, and should independently confirm the accuracy of the information contained herein through a due diligence review of the books, records, files and documents that constitute reliable sources of the information described herein. ©This copyrighted report contains research licensed to NAI Capital, inc - 108480.

For information, please contact your exclusive listing agent:

Jack Dwyer
Senior Vice President
jdwyer@naicapital.com

2555 Townsgate Road, Suite 320
Westlake Village CA 91361
tel 818 865 1200 ■ 805 446 2400
fax 805 446 2401