

Appendix I

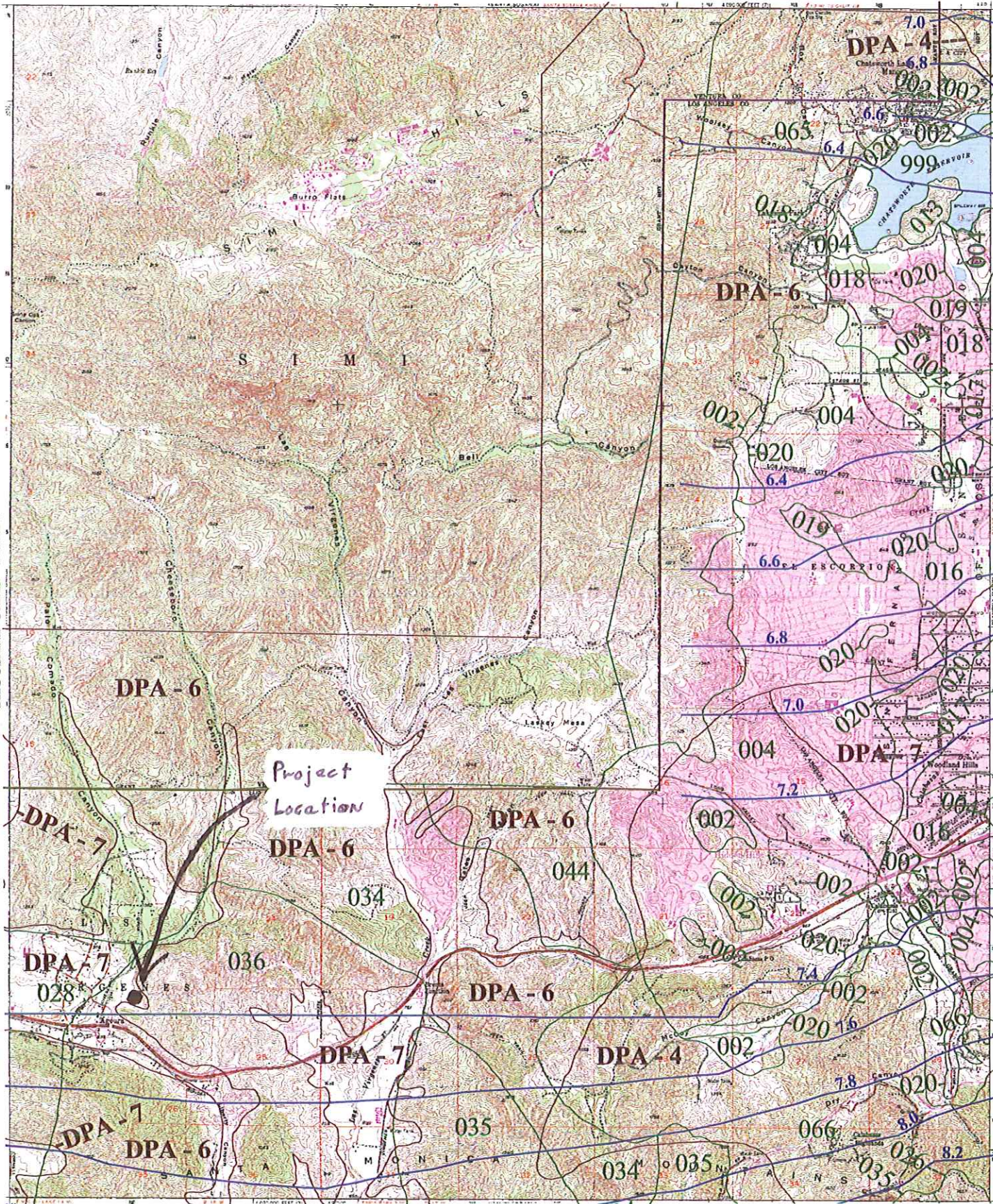
34° 15' 00"

SANTA SUSANA 1-HI.34

-118° 45' 00"

THOUSAND OAKS 1-HI.24

CANOGA PARK 1-HI.26



-118° 37' 30"

MALIBU BEACH 1-HI.15

34° 07' 30"



016

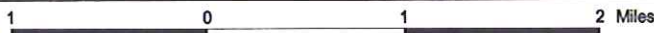
SOIL CLASSIFICATION AREA

7.2

INCHES OF RAINFALL

DPA - 6

DEBRIS POTENTIAL AREA



25-YEAR 24-HOUR ISOHYET REDUCTION FACTOR: 0.878
10-YEAR 24-HOUR ISOHYET REDUCTION FACTOR: 0.714

CALABASAS 50-YEAR 24-HOUR ISOHYET

1-HI.25



Appendix J

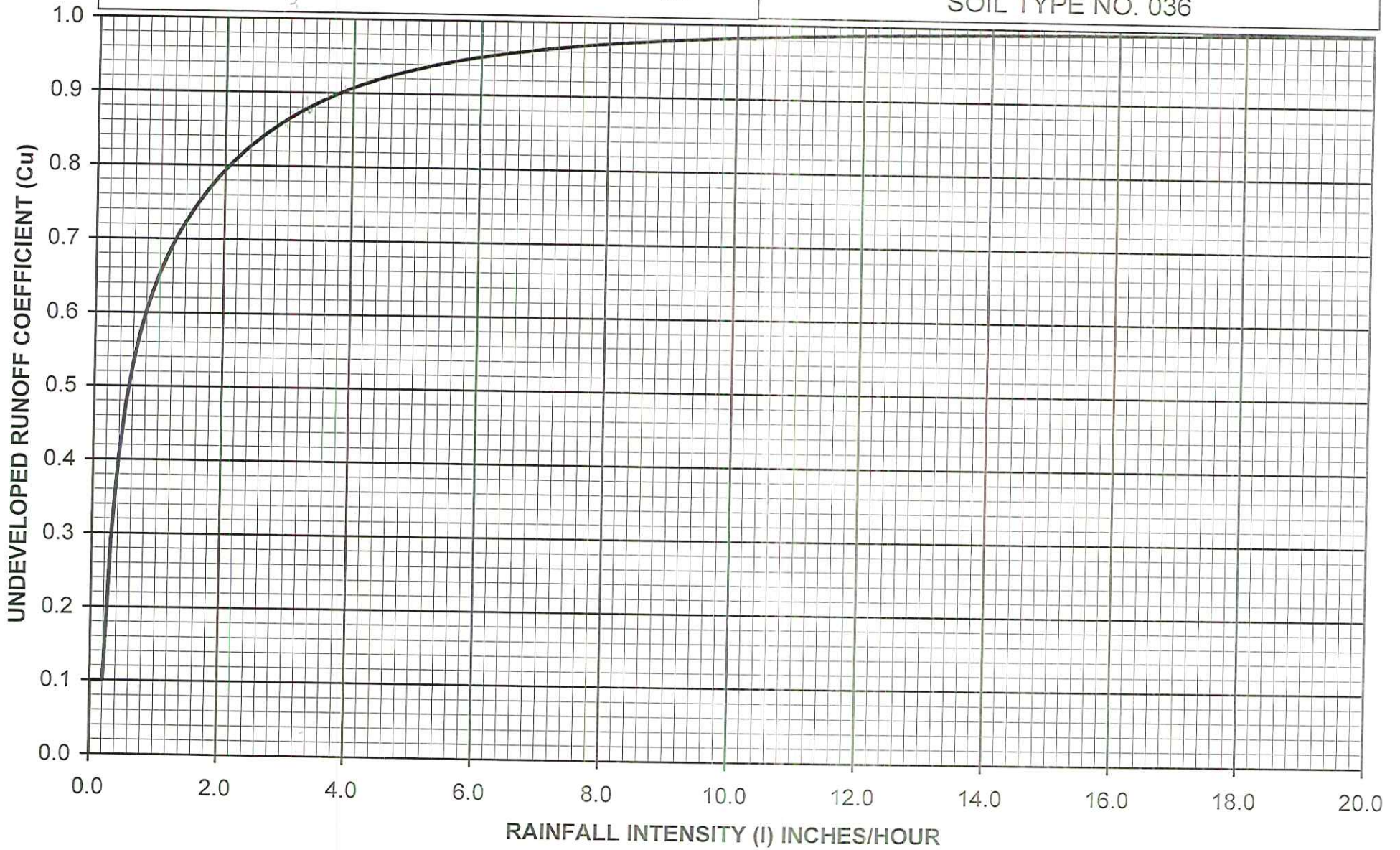
$$C_D = (0.9 * IMP) + (1.0 - IMP) * C_U$$

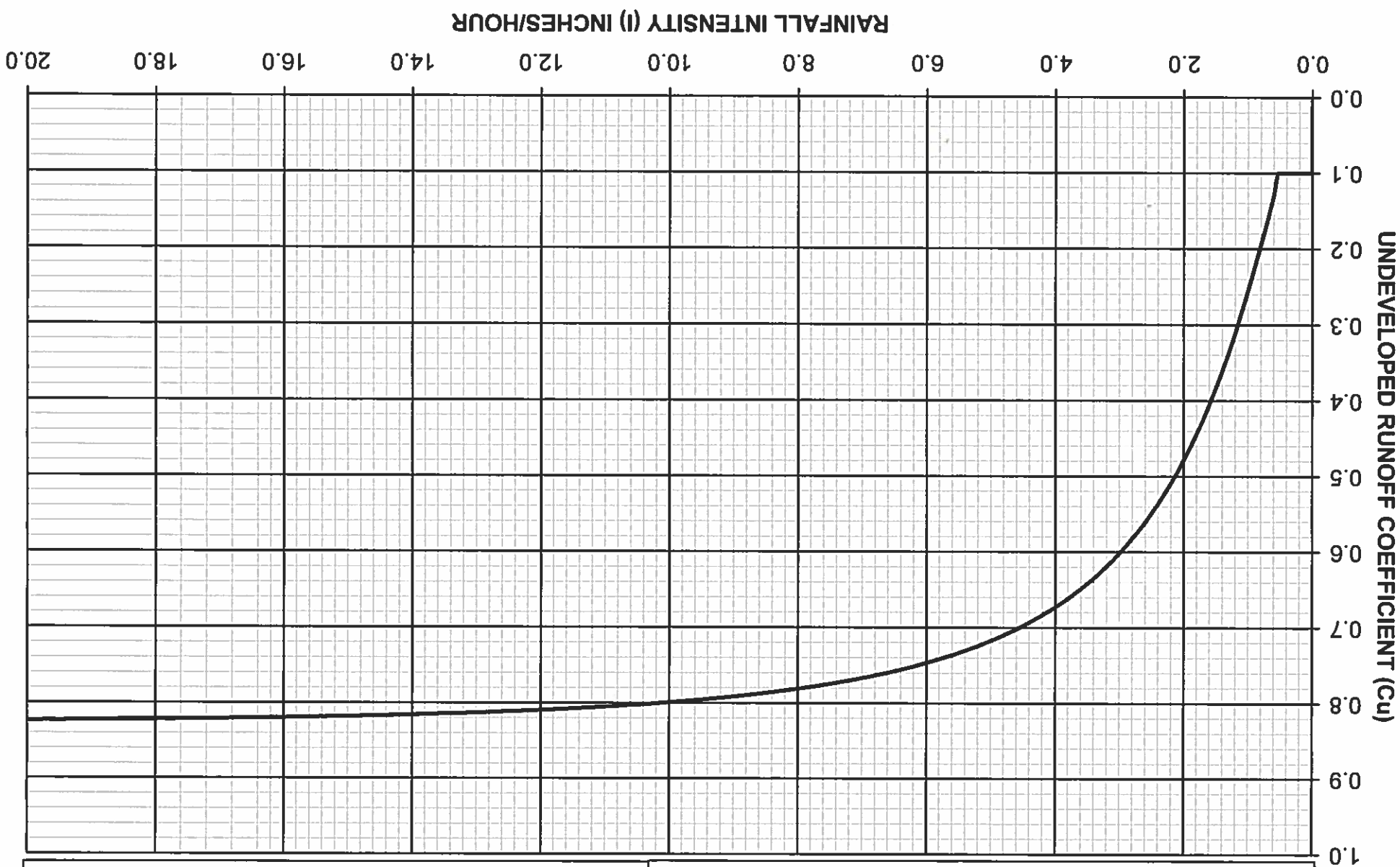
Where: C_D = Developed Runoff Coefficient
 IMP = Proportion Impervious
 C_U = Undeveloped runoff coefficient



Los Angeles County Department of Public Works

RUNOFF COEFFICIENT CURVE
 SOIL TYPE NO. 036





$C_u = (0.9 \cdot IMP) + (1.0 - IMP) \cdot C_d$
 Where: C_d = Developed Runoff Coefficient
 IMP = Proportion ImperVIOUS
 C_u = Undeveloped runoff coefficient

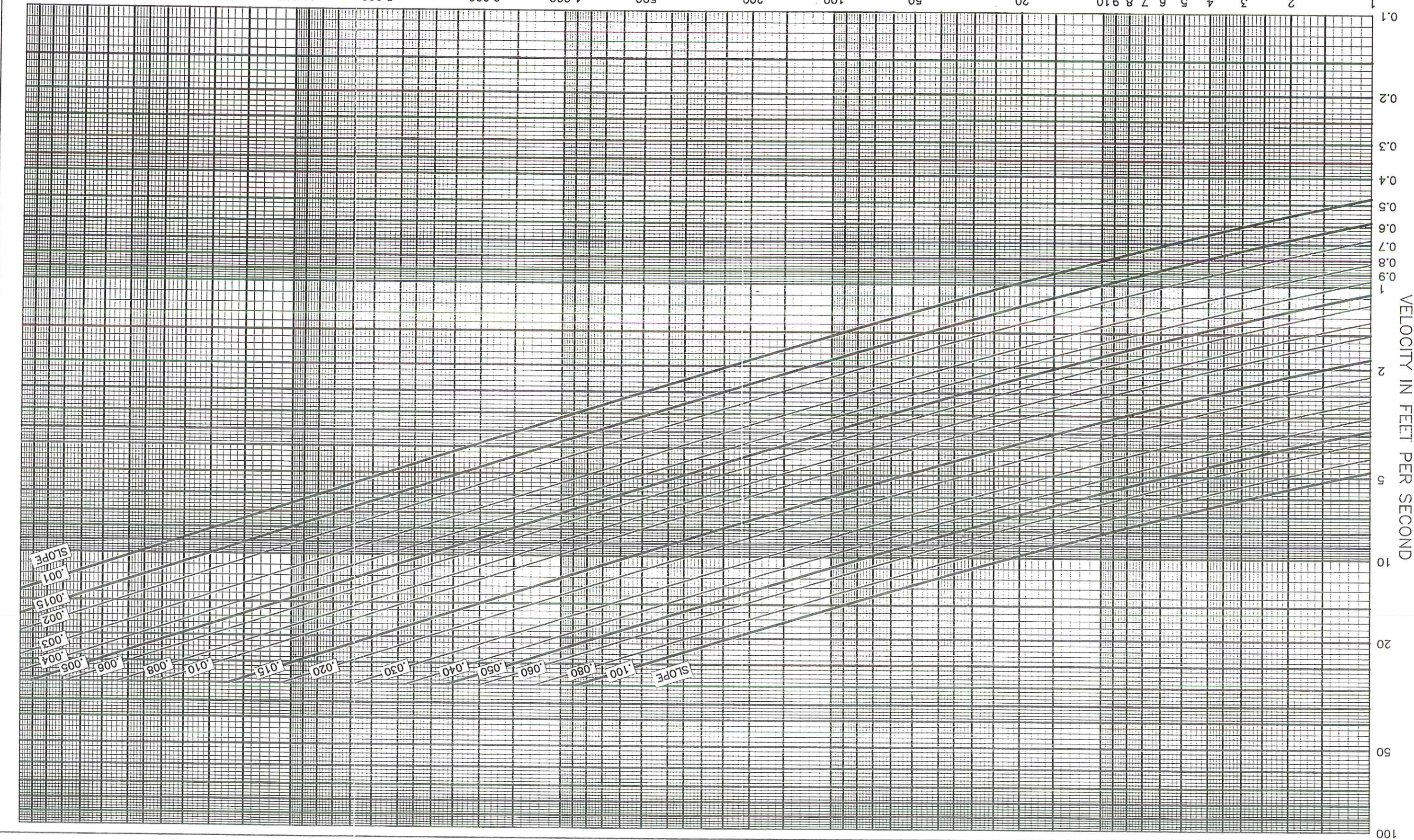


Los Angeles County Department of Public Works
 RUNOFF COEFFICIENT CURVE
 SOIL TYPE NO. 028

Appendix K

DISCHARGE IN CUBIC FEET PER SECOND

NATURAL VALLEY CHANNELS
VELOCITY-DISCHARGE-SLOPE RELATIONSHIPS

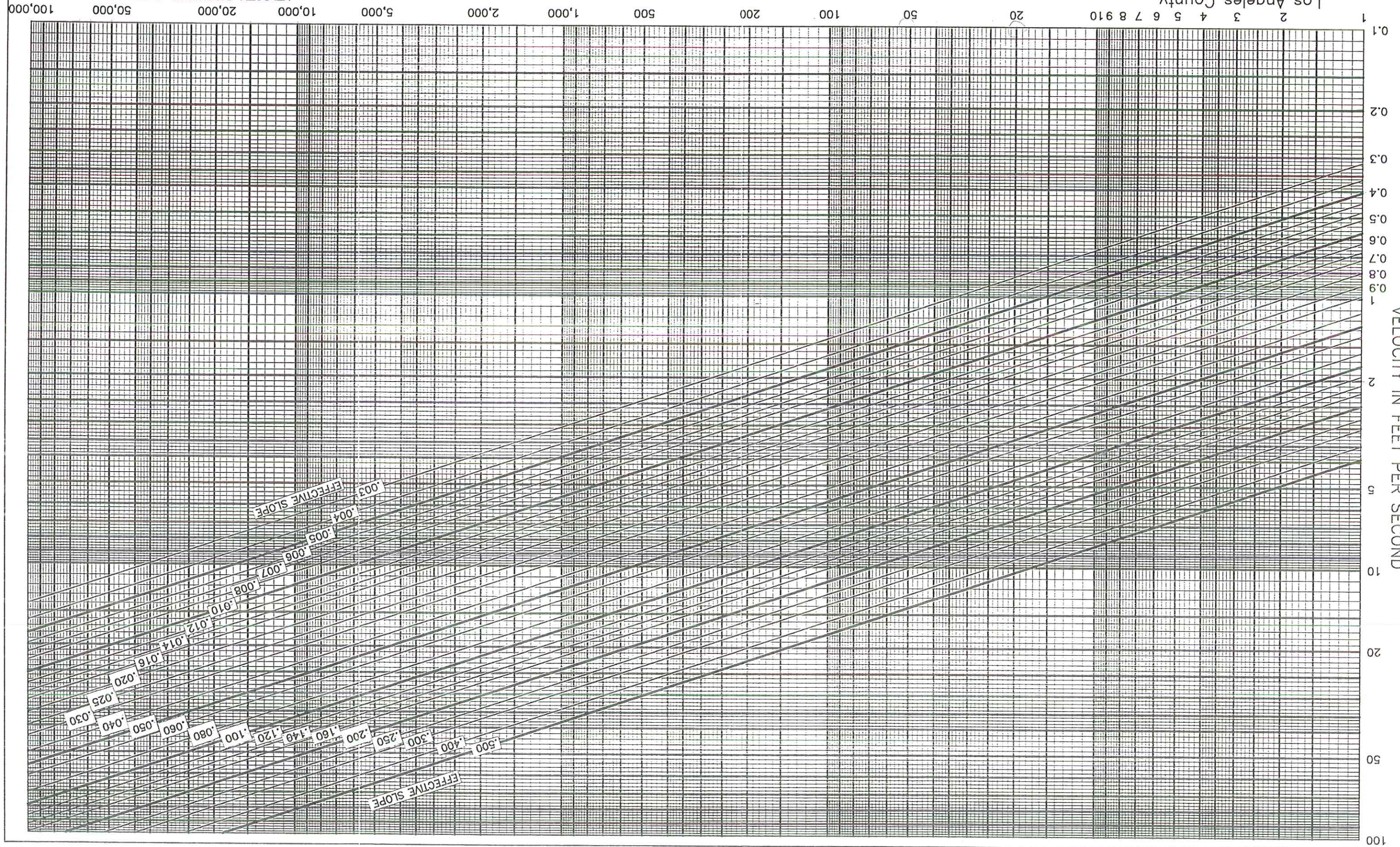


> 10%

Los Angeles County
Department of Public Works

DISCHARGE IN CUBIC FEET PER SECOND

NATURAL MOUNTAIN CHANNELS
VELOCITY-DISCHARGE-SLOPE RELATIONSHIPS



2 100%