

REPORT TO CITY COUNCIL

DATE: JUNE 8, 2016

TO: HONORABLE MAYOR AND MEMBERS OF THE CITY COUNCIL

FROM: GREG RAMIREZ, CITY MANAGER

BY: RAMIRO ADEVA, PUBLIC WORKS DIRECTOR/CITY ENGINEER

**SUBJECT: DISCUSS 65% DESIGN PLANS FOR KANAN/AGOURA ROAD
ULTIMATE INTERSECTION**

In May 2016, staff received the 65% draft design plans for the Kanan/Agoura Road Ultimate Intersection Improvements Project. These plans were presented to the Public Works Subcommittee (Mayor Schwarz and Mayor Pro Tem Denis Weber) on Wednesday, June 1, 2016.

In a proactive effort to ensure this vital piece of infrastructure is consistent with the Council's vision for public improvements within the Agoura Village area, staff is seeking feedback on the 65% plan set (attached), and guidance on items to consider when moving towards the 95% plan set.

RECOMMENDATION

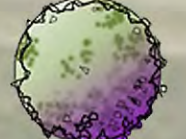

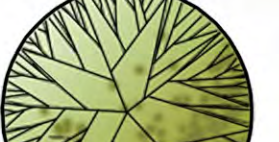

Staff respectfully recommends the City Council provide feedback on the 65% plan set, and give guidance on items to consider when moving towards the 95% submittal.

Attachment: 65% draft plans



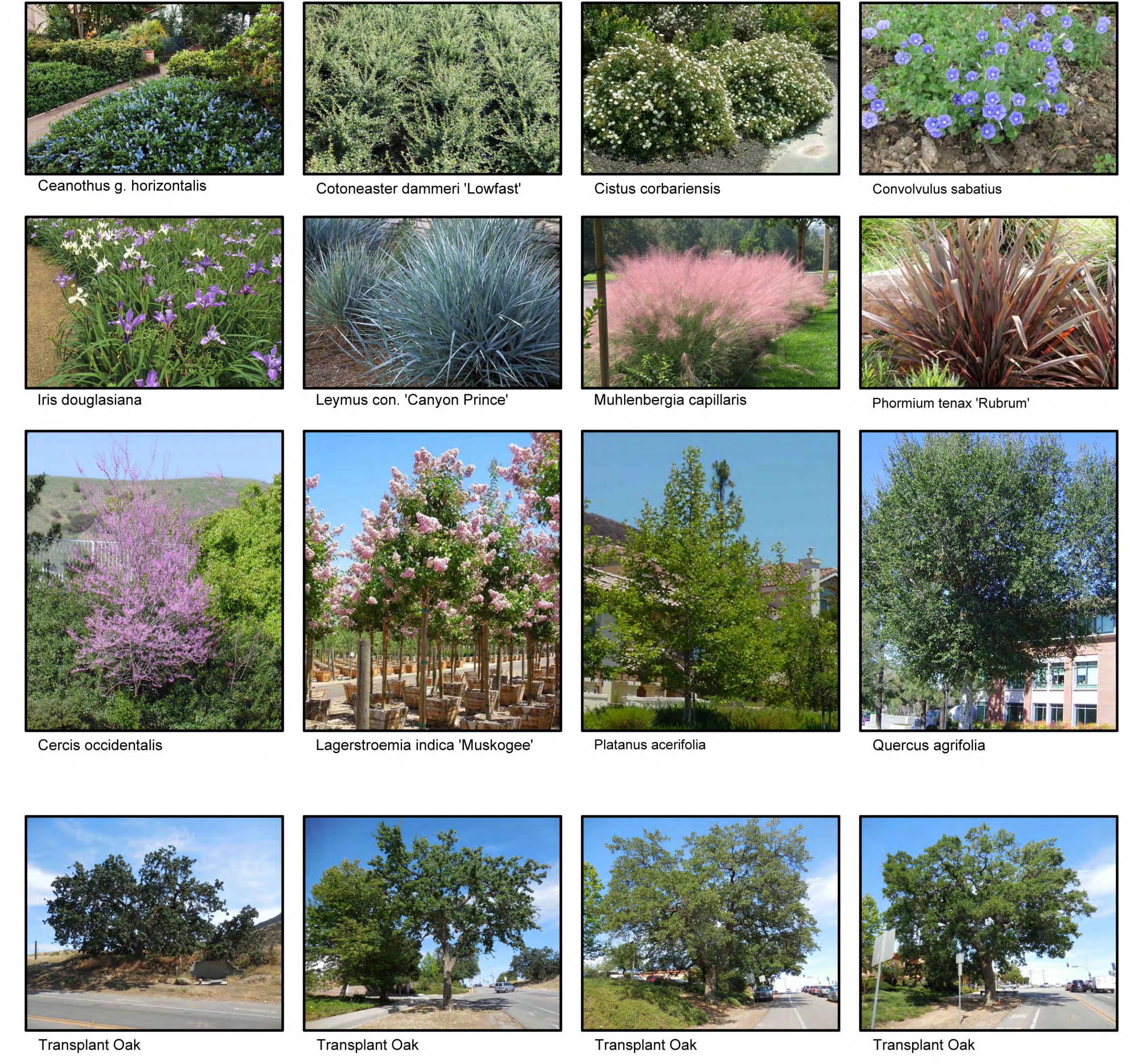
PLANT LIST

Trees:

-  *Cercis occidentalis*
-  *Lagerstroemia indica* 'Muskogee'
(ALTERNATIVE TREE SPECIES: *Prunus* 'Pissardi', *Pyrus* 'Aristocrat' and *Ligustrum* 'Texanum' - See left for images)
-  *Platanus acerifolia* 'Bloodgood'
-  *Quercus agrifolia*

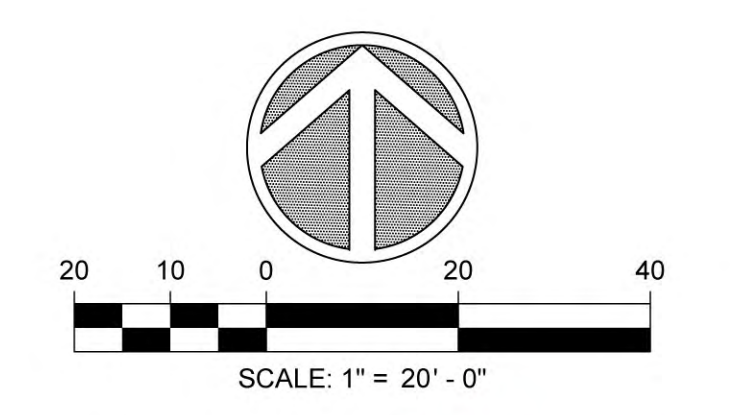
Shrubs:

- Agave americana*
- Arctostaphylos* Howard McMinn
- Arctostaphylos* 'Emerald Carpet'
- Ceanothus* g. 'horiz.' 'Diamond Heights'
- Ceanothus* thyrsiflorus 'Skyjack'
- Cistus* corbariensis
- Cistus* purpureus
- Convolvulus* sabatius
- Cotoneaster* dammeri 'Lowfast'
- Convolvulus* cneorum
- Festuca* ovina glauca
- Festuca* rubra 'Molite'
- Iris* douglasiana
- Leymus* condensatus 'Canyon Prince'
- Mahonia* aquifolium 'Compacta'
- Muhlenbergia* capillaris 'Lenca'
- Muhlenbergia* rigens
- Penstemon* het. var. heterophyllus
- Penstemon* het. 'Margarita Bop'
- Rosa* 'Town & Country' - (pink) flower carpet
- Rose* (red)
- Perovskia* atriplicifolia
- Phormium* tenax 'Rubrum'
- Rosmarinus* officinalis
- Salvia* leucantha



CITY OF AGOURA HILLS
30001 LADYFACE COURT
AGOURA HILLS, CA 91301

KANAN ROAD AND AGOURA ROAD INTERSECTION IMPROVEMENTS



Revised: May 25, 2016
Revised: July 29, 2015
Revised: May 18, 2015
April 27, 2015
LNDG #2247-04

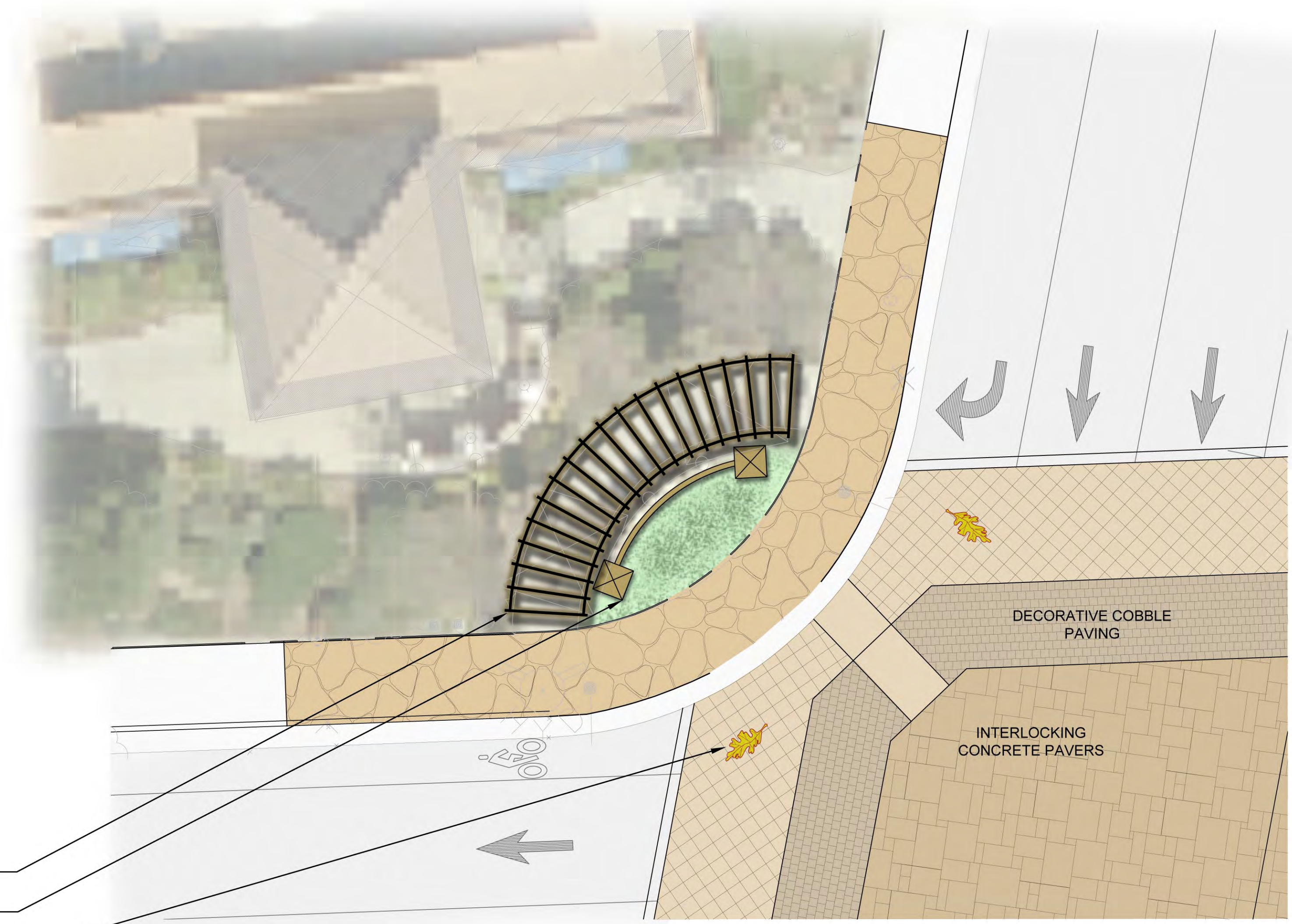
L. Newman Design Group, Inc.

- Landscape Architecture
- Planning
- Horticulture
- Biological Restoration

31000 Via Caliente, Suite 104
Westlake Village, CA 91362-3024
Phone: (818) 991-5200 or Fax: (818) 991-3478
E-mail: lndg@lndg.net

Kimley-Horn

© 2014 KIMLEY-HORN AND ASSOCIATES, INC.
660 South Figueroa Street, Suite 1040, Los Angeles, CA 90017
Tel: (213) 261-4040



- NEW UPGRADED TRELLIS
- NEW DECORATIVE STONE PILASTER
- TEXTURED, COLORED CONCRETE LOGO

**NORTHWEST CORNER
PLAN**

SCALE : 1/8" = 1'-0"



- EXISTING SIGN
- EXISTING LANDSCAPE
- NEW STONE WALL WITH STONE PILASTERS
- UPGRADE EXISTING PAVING WITH NEW STONE
- CAST CONCRETE LOGO

**NORTHEAST CORNER
PLAN**

SCALE : 1/8" = 1'-0"



- EXISTING TRELLIS TO UPGRADED WITH NEW STONE COLUMNS AND LARGER BEAMS
- EXISTING SIGN LETTERING TO BE REMOVED. EXISTING STONE WALL TO REMAIN.
- NEW DECORATIVE STONE COLUMN
- NEW DECORATIVE STONE PILASTER

**NORTHWEST CORNER
RENDERING**



- PROPOSED DECORATIVE STONE WALL
- PROPOSED PLANTING
- DECORATIVE STONE PILASTER

**NORTHEAST CORNER
RENDERING**



CITY OF AGOURA HILLS
30001 LADYFACE COURT
AGOURA HILLS, CA 91301

KANAN ROAD AND AGOURA ROAD INTERSECTION IMPROVEMENTS



Revised: May 25, 2016
Revised: July 29, 2015
Revised: May 18, 2015
April 27, 2015
LNDG #2247-04

L. Newman
Design Group, Inc.

31000 Via Caliente • Suite 104
 Westlake Village, CA 91362-3024
 Phone: (818) 991-9200 • Fax: (818) 991-9478
 E-mail: info@khdg.net



VICINITY MAP

PLANT LIST:

- Shrubs:**
 Aristotaphylos 'emerald carpet'
 Ceanothus H. Horiz. 'Diamond Heights'
 Ceanothus thyrsiflorus 'Skylark'
 Cistus corbariensis
 Cistus purpureus
 Convolvulus cneorum
 Cotoneaster dammeri 'Lowfast'
 Festuca rubra 'Molate'
 Festuca ovina glauca
 Iris douglasiana
 Leymus condensatus 'Canyon Prince'
 Mahonia aquifolium 'Compacta'
 Mimulus aurantiacus
 Muhlenbergia capillaris 'Lenca'
 Muhlenbergia rigens
 Penstemon het. var. heterophyllus
 Penstemon het. 'Margarita Bop'
 Rosa 'Town & Country' - (pink) flower carpet
 Rose (red)
 Salvia leucantha



Transplant Oak



Transplant Oak



Transplant Oak



Transplant Oak



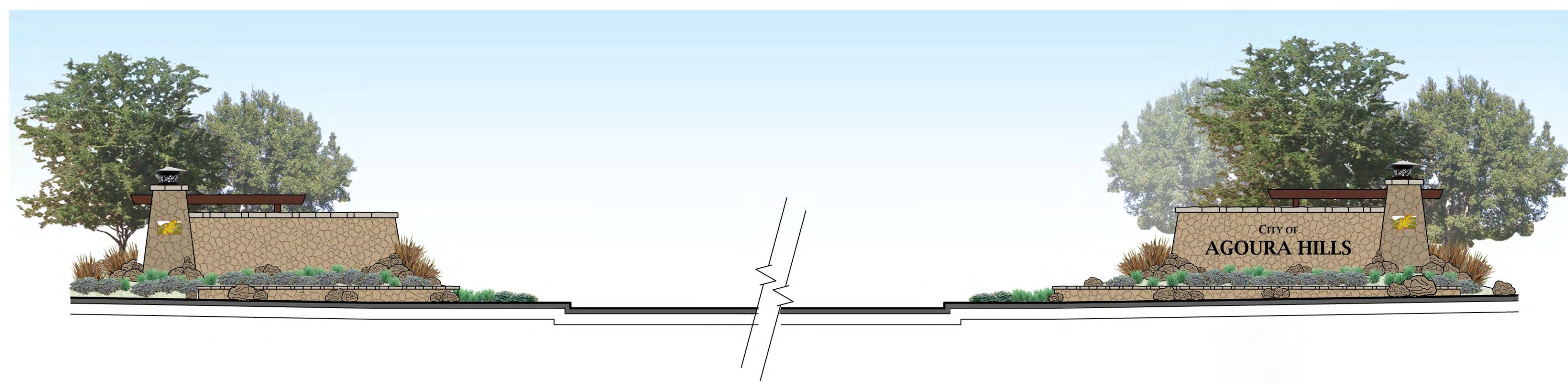
Alternative Transplant Oak



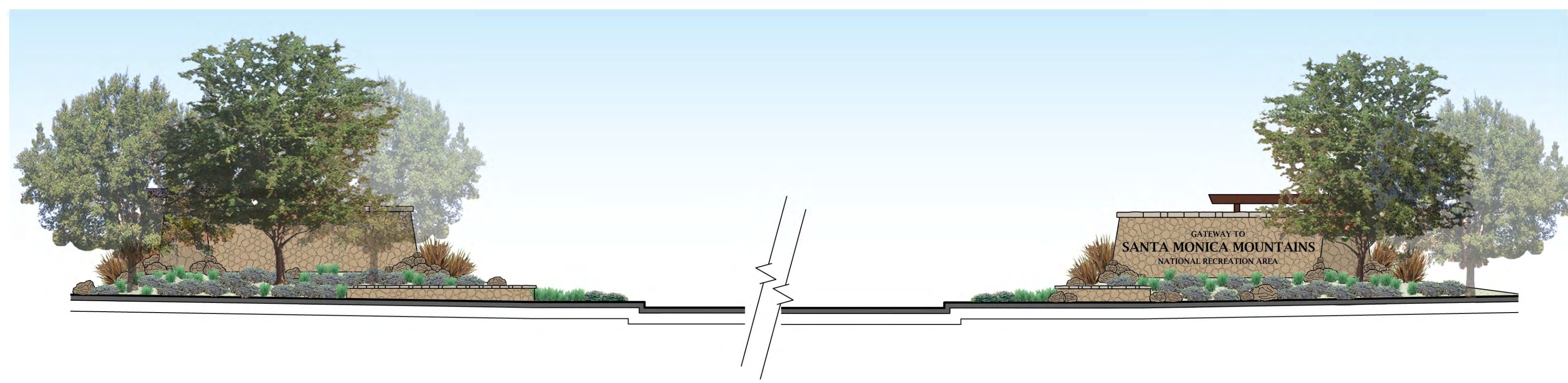
Alternative Transplant Oak



Alternative Transplant Oak

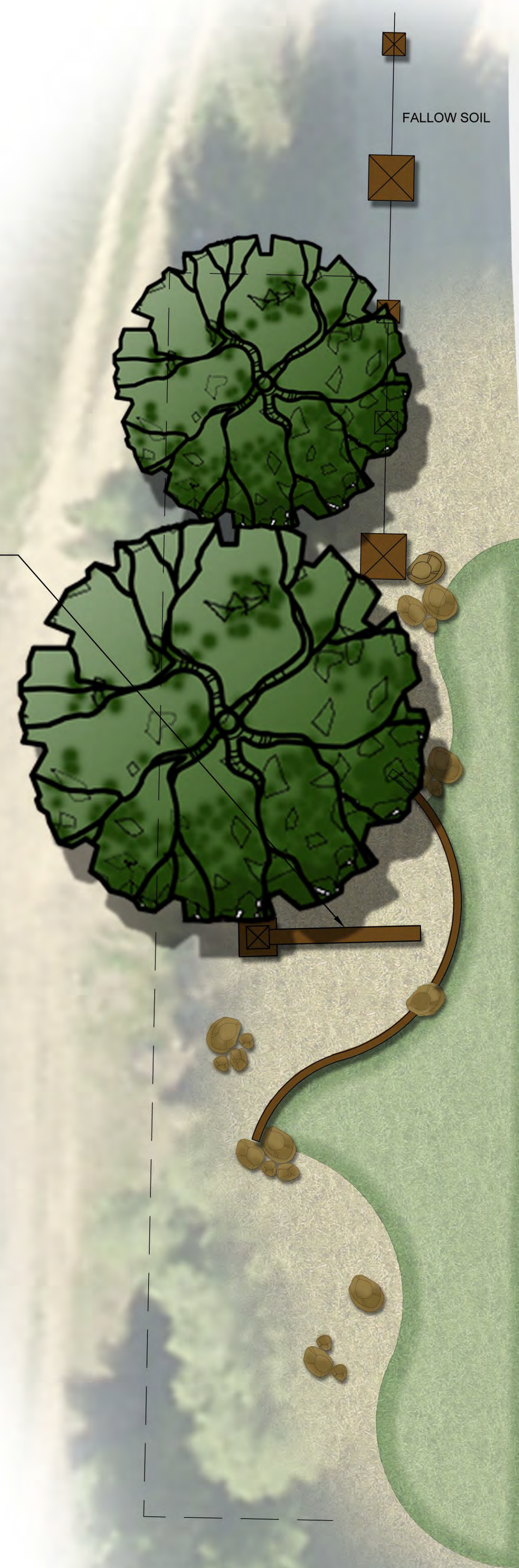


Entry Sign Section / Elevation (Looking North)



Entry Sign Section / Elevation (Looking South)

'GATEWAY TO SANTA MONICA MOUNTAINS'
SIGN TO BE LOCATED ON NORTH
SIDE OF MONUMENT WALL



FALLOW SOIL



FALLOW SOIL

TRANSPLANTED OAKS
ALONG WITH NEW
SPECIMEN PLANTED OAKS

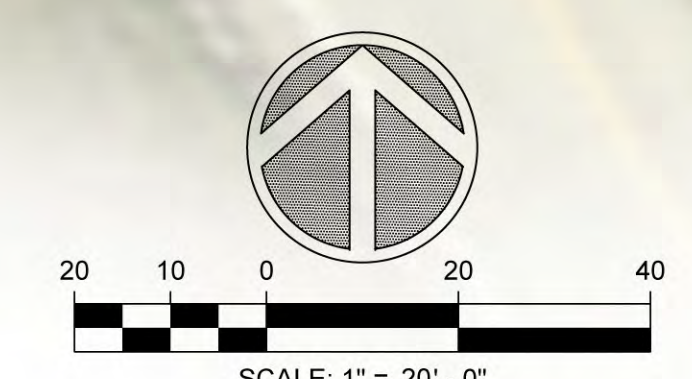
LOW STONE PLANTER WALL
MAJOR ENTRY MONUMENTATION,
SIGNAGE AND LIGHTING

DROUGHT TOLERANT
LOW GROUNDCOVER

KANAN ROAD

CORNELL ROAD

**KANAN ROAD AND AGOURA ROAD
INTERSECTION IMPROVEMENTS
CITY ENTRY SIGNAGE MONUMENT**



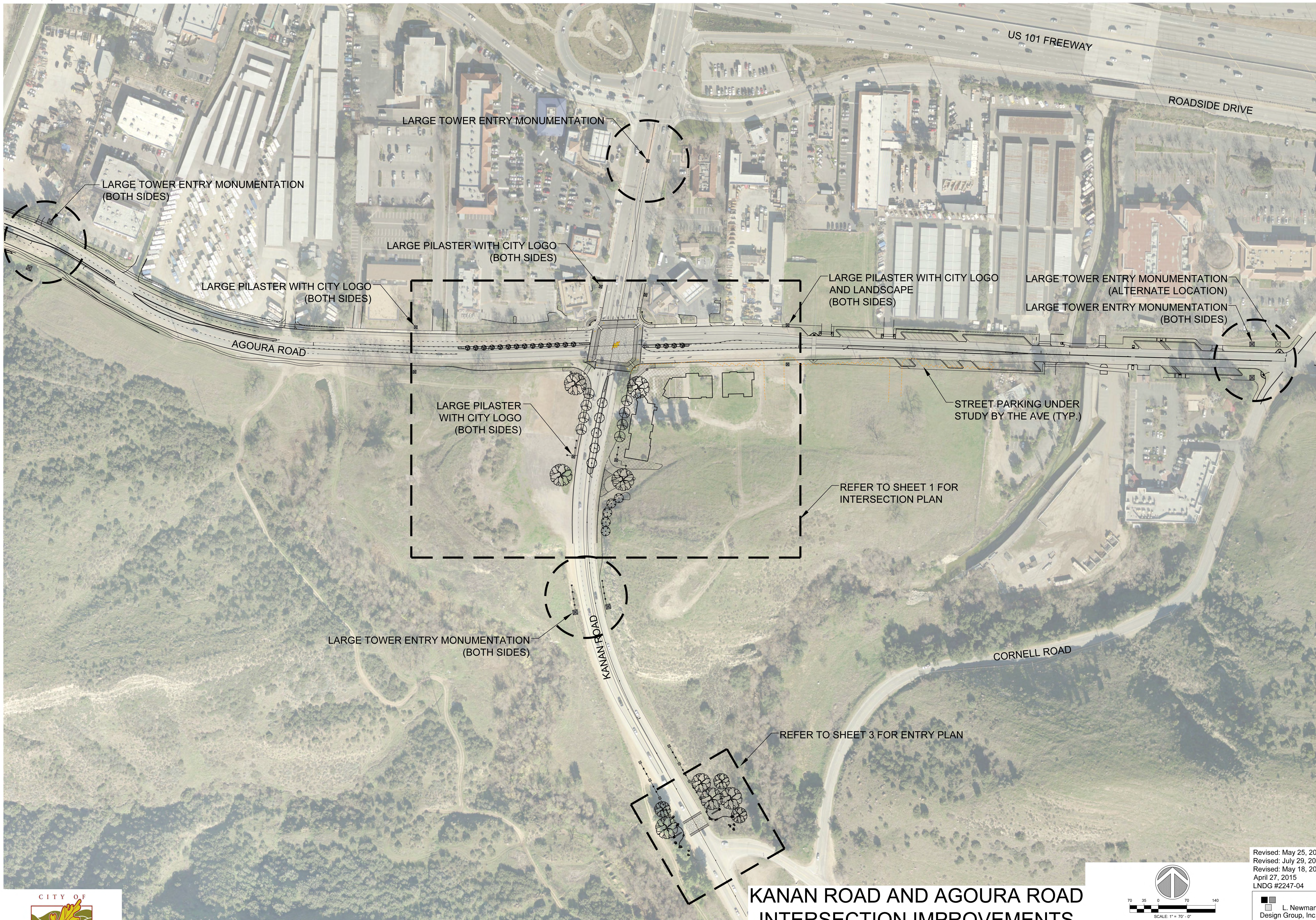
CITY OF AGOURA HILLS
30001 LADYFACE COURT
AGOURA HILLS, CA 91301

*THIS OPTION IS SUBJECT TO PROPERTY OWNER'S APPROVAL
NEGOTIATION AND LANDSCAPE MAINTENANCE EASEMENTS.

Kimley»Horn
 © 2014 KIMLEY-HORN AND ASSOCIATES, INC.
 660 South Figueroa Street, Suite 1040, Los Angeles, CA 90017
 Tel: (213) 261-4040

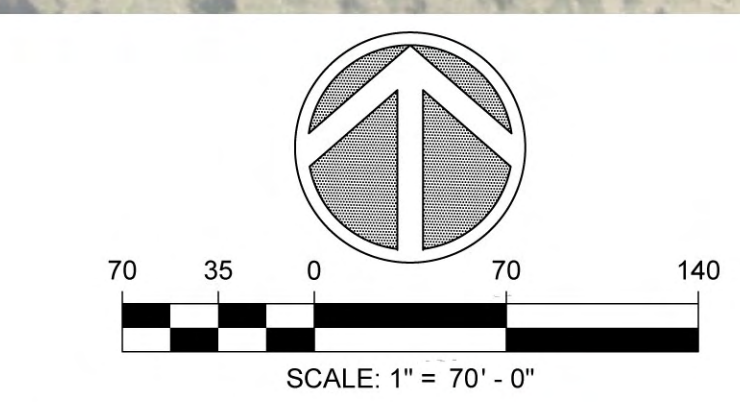
Revised: May 25, 2016
 Revised: July 29, 2015
 Revised: May 18, 2015
 April 27, 2015
 LNDG #2247-04

**L. Newman
Design Group, Inc.**
 ■ Landscape Architecture
 ■ Planning
 ■ Horticulture
 ■ Biological Restoration
 31000 Via Caliente, Suite 104
 Westlake Village, CA 91362-3024
 Phone: (818) 991-9200 • Fax: (818) 991-9478
 E-mail: lndg@lndg.net



CITY OF AGOURA HILLS
 30001 LADYFACE COURT
 AGOURA HILLS, CA 91301

KANAN ROAD AND AGOURA ROAD INTERSECTION IMPROVEMENTS ENTRY MONUMENTATION



Kimley»Horn
 © 2014 KIMLEY-HORN AND ASSOCIATES, INC.
 660 South Figueroa Street, Suite 1040, Los Angeles, CA 90017
 Tel (213) 261-4040

Revised: May 25, 2016
 Revised: July 29, 2015
 Revised: May 18, 2015
 April 27, 2015
 LNDG #2247-04

**L. Newman
 Design Group, Inc.**
 Landscape Architecture
 Planning
 Horticulture
 Biological Restoration
 31025 Via Caliente • Suite 104
 Westlake Village, CA 91362-3024
 Phone: (818) 991-9200 • Fax: (818) 991-9478
 E-mail: lndg@lndg.net