



**C** WEST ELEVATION

SCALE 3/32" = 1'-0"



**D** EAST ELEVATION

SCALE 3/32" = 1'-0"

**KEYNOTES**

- 1 ANODIZED ALUMINUM STOREFRONT SYSTEM
- 2 PAINTED EIFS WITH REVEALS
- 3 MANUFACTURED ASHLAR PATTERN STONE
- 4 WOOD PAINTED TRELIS
- 5 BUTT JOINT GLASS RAILING
- 6 STANDING SEAM METAL ROOF
- 7 WOOD PAINTED OUTRIGGER, SEE DETAIL 2/11
- 8 WOOD PAINTED FASCIA
- 9 SPANDREL METAL PANEL
- 10 WOOD PAINTED EYEBROWS

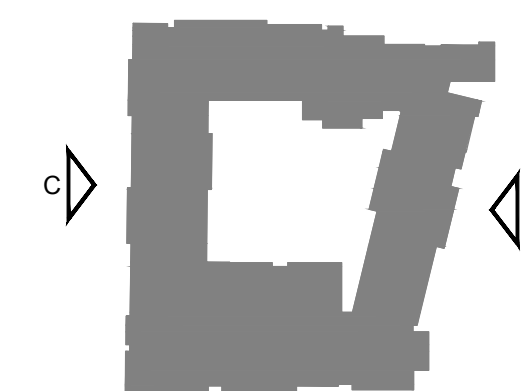
- 11 LED ILLUMINATED ALUMINUM CHANNEL LETTERS WITH ACRYLIC FACE
- 12 PORTE CHOCHERE
- 13 PRECAST CONCRETE BASE
- 14 HORIZONTAL EIFS TRIM

NOTE:  
ALL WINDOWS WILL BE TEMPERED ON AT LEAST ONE SIDE OF THE DUAL PANE, OR A 20 MIN RATED WINDOW OR GLASS BLOCKS PER SECTION 704A.3.2.2 OF THE 2010 CALIFORNIA BUILDING CODE

**FINISH SCHEDULE**


- 1 ARCADIA AB-4, MEDIUM BRONZE
- 2 1" CLEAR INSULATED GLAZING
- 3 DAVIS COLORS, GREEN SLATE #3685
- 4 CORONADO STONE, PAVILION STONE
- 5 ATAS STEEL, 03 MEDIUM BRONZE
- 6 ATAS STEEL, 06 SANDSTONE
- 7 BENJAMIN MOORE HC-81 MANCHESTER TAN
- 8 BENJAMIN MOORE HC-141 HOLLINGSWORTH GREEN
- 9 BENJAMIN MOORE HC-22 BLAIR GOLD
- 10 BENJAMIN MOORE HC-19 NORWICH BROWN

**KEY MAP**



N.T.S.

REVISION #	SYMBOL	DESCRIPTION OF CHANGE	APPROVED	DATE

PREPARED BY:  
  
 ANTHONY BOON • ROBERT MORILL  
 ARCHITECTS • INTERIORS  
 PROJECT ARCHITECT  
 11/23/15  
 DATE

CITY OF AGOURA HILLS APPROVAL

REVIEWED BY	DATE	DATE	RCE NO.	EXP DATE

**MARRIOTT COURTYARD & TOWNEPLACE SUITES**  
 29505 & 29515 AGOURA ROAD  
 AGOURA HILLS, CALIFORNIA 91301

SHEET **10** OF



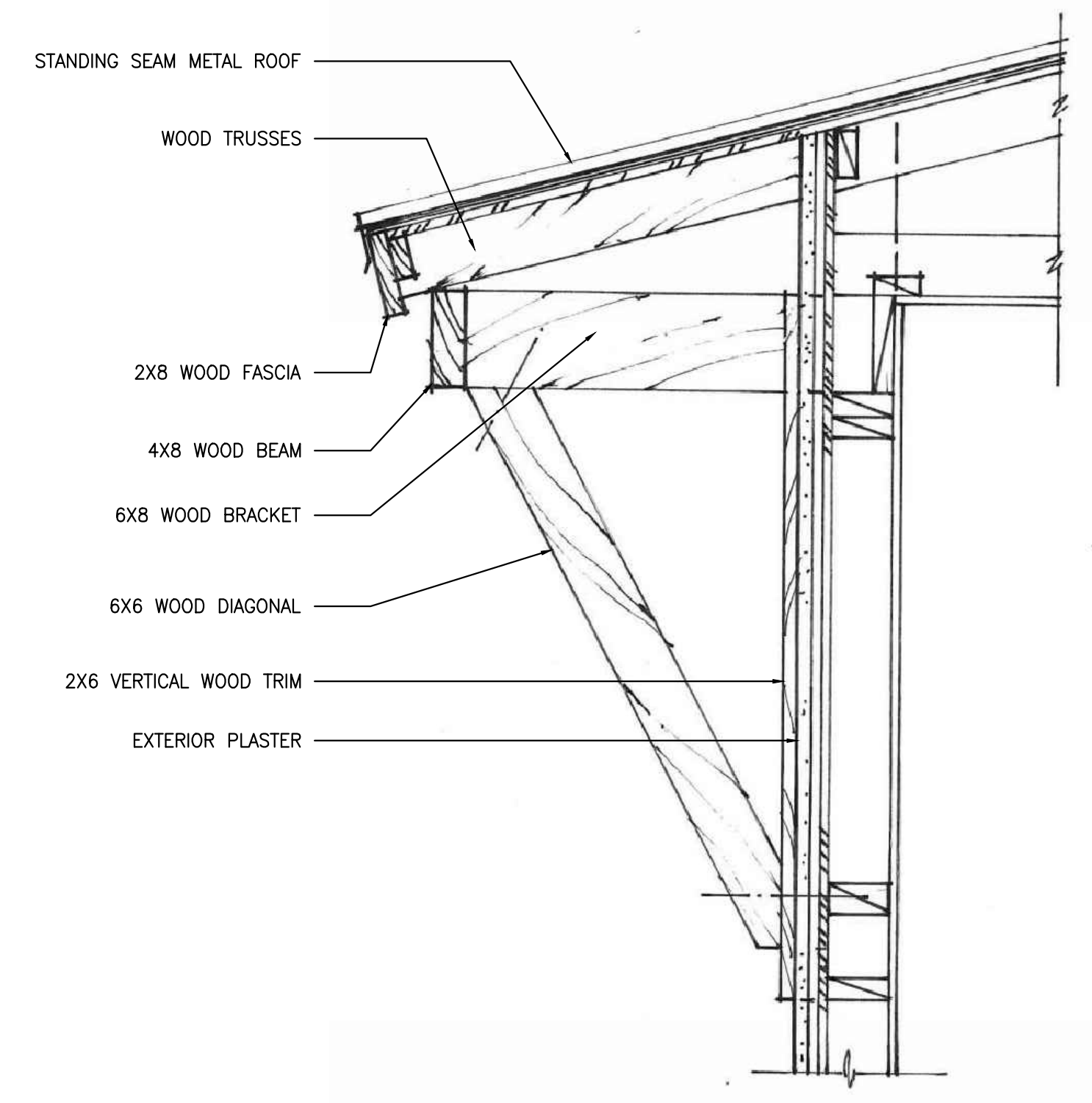
**E** TYPICAL COURTYARD ELEVATION

SCALE 3/32" = 1'-0" 0 4' 8' 16'



**1** OUTDOOR DINING AREA SECTION / ELEVATION

SCALE 1/2" = 1'-0" 0 1' 2' 4'



**2** OUTRIGGER DETAIL

N.T.S.

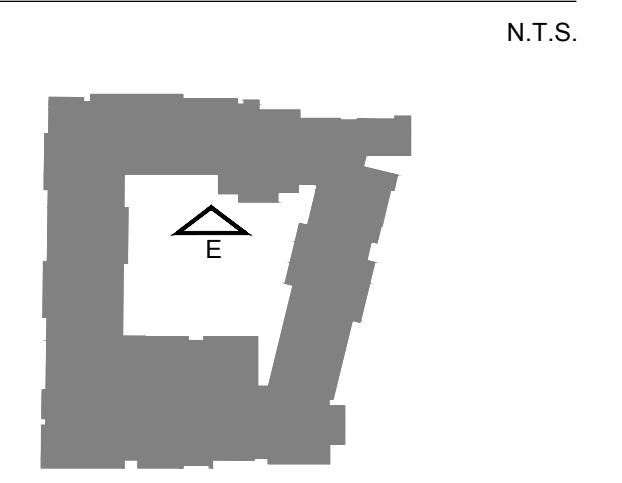
**KEYNOTES**

- |   |   |
|---|---|
| 1 ANODIZED ALUMINUM STOREFRONT SYSTEM     | 11 LED ILLUMINATED ALUMINUM CHANNEL LETTERS WITH ACRYLIC FACE |
| 2 PAINTED EIFS WITH REVEALS               | 12 PORTE CHOCHERE   |
| 3 MANUFACTURED ASHLAR PATTERN STONE       | 13 PRECAST CONCRETE BASE                                      |
| 4 WOOD PAINTED TRELLIS                    | 14 HORIZONTAL EIFS TRIM                                       |
| 5 BUTT JOINT GLASS RAILING                |   |
| 6 STANDING SEAM METAL ROOF                |   |
| 7 WOOD PAINTED OUTRIGGER, SEE DETAIL 2/11 |   |
| 8 WOOD PAINTED FASCIA                     |   |
| 9 SPANDREL METAL PANEL                    |   |
| 10 WOOD PAINTED EYEBROWS                  |   |
- NOTE:  
ALL WINDOWS WILL BE TEMPERED ON AT LEAST ONE SIDE OF THE DUAL PANE, OR A 20 MIN RATED WINDOW OR GLASS BLOCKS PER SECTION 704A.3.2.2 OF THE 2010 CALIFORNIA BUILDING CODE

**FINISH SCHEDULE**

- |   |
|---|
| 1 ARCADIA AB-4, MEDIUM BRONZE               |
| 2 1" CLEAR INSULATED GLAZING                |
| 3 DAVIS COLORS, GREEN SLATE #3685           |
| 4 CORONADO STONE, PAVILION STONE            |
| 5 ATAS STEEL, 03 MEDIUM BRONZE              |
| 6 ATAS STEEL, 06 SANDSTONE                  |
| 7 BENJAMIN MOORE HC-81 MANCHESTER TAN       |
| 8 BENJAMIN MOORE HC-141 HOLLINGSWORTH GREEN |
| 9 BENJAMIN MOORE HC-22 BLAIR GOLD           |
| 10 BENJAMIN MOORE HC-19 NORWICH BROWN       |

**KEY MAP**



N.T.S.

REVISION #	SYMBOL	DESCRIPTION OF CHANGE	APPROVED	DATE

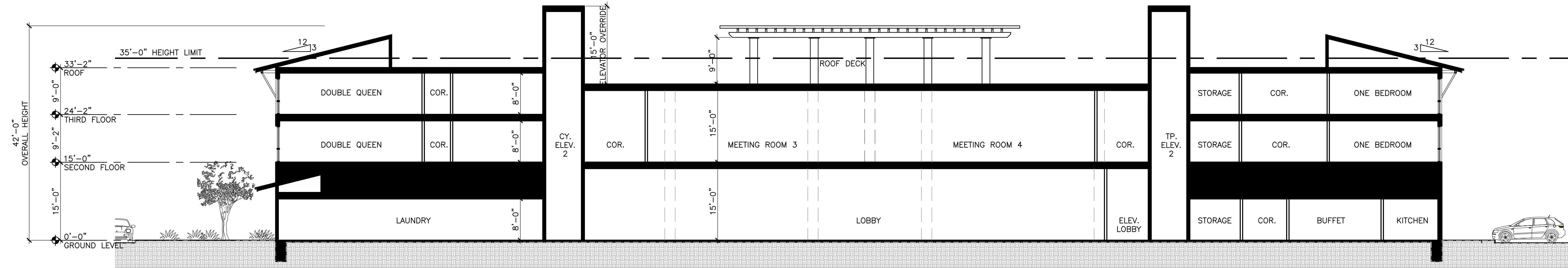
PREPARED BY:  
  
 ANTHONY SCORIO, ARCHITECT  
 ARCHITECTS + INTERIORS  
 PROJECT ARCHITECT  
 11/23/15  
 DATE

CITY OF AGOURA HILLS APPROVAL

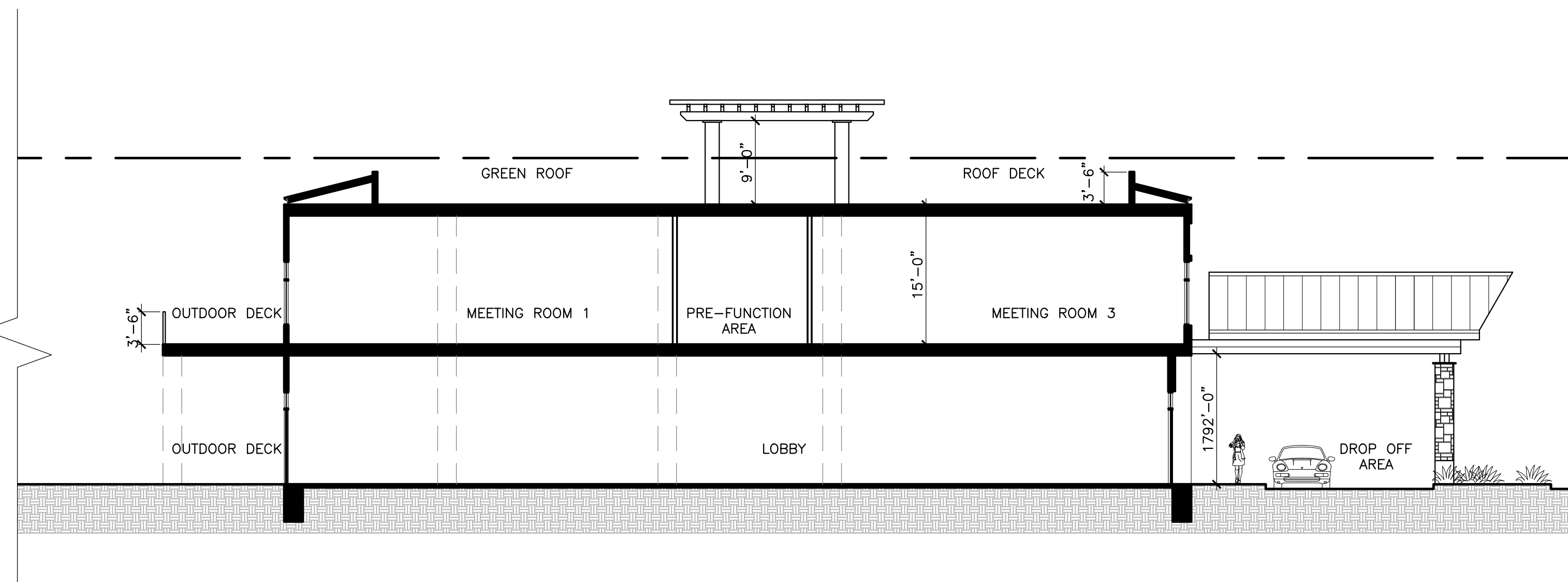
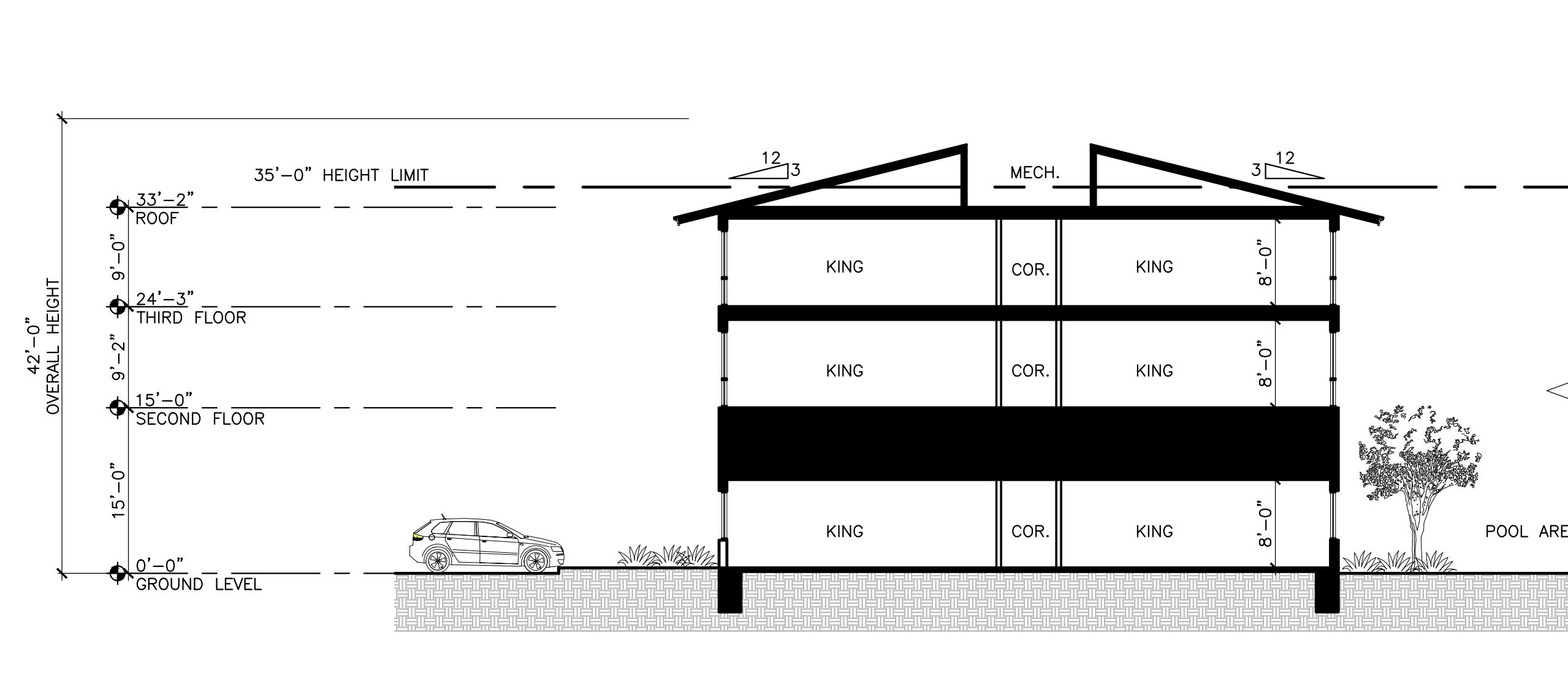
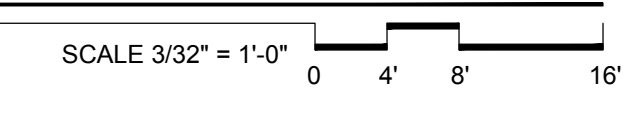
REVIEWED BY	DATE	DATE	RCE NO.	EXP DATE

**MARRIOTT COURTYARD & TOWNEPLACE SUITES**  
 29505 & 29515 AGOURA ROAD  
 AGOURA HILLS, CALIFORNIA 91301

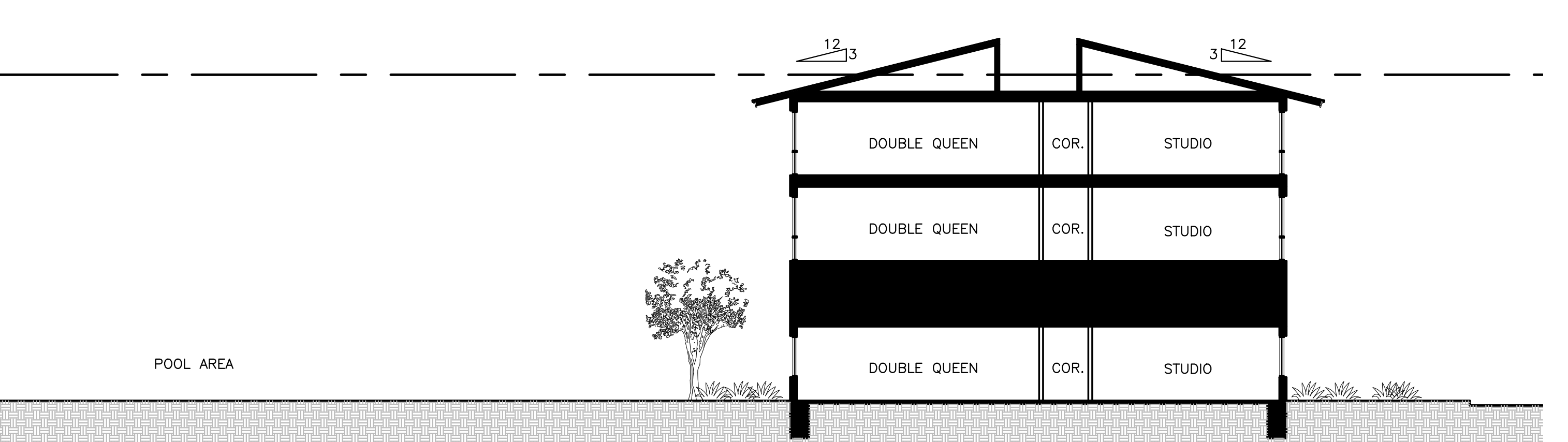
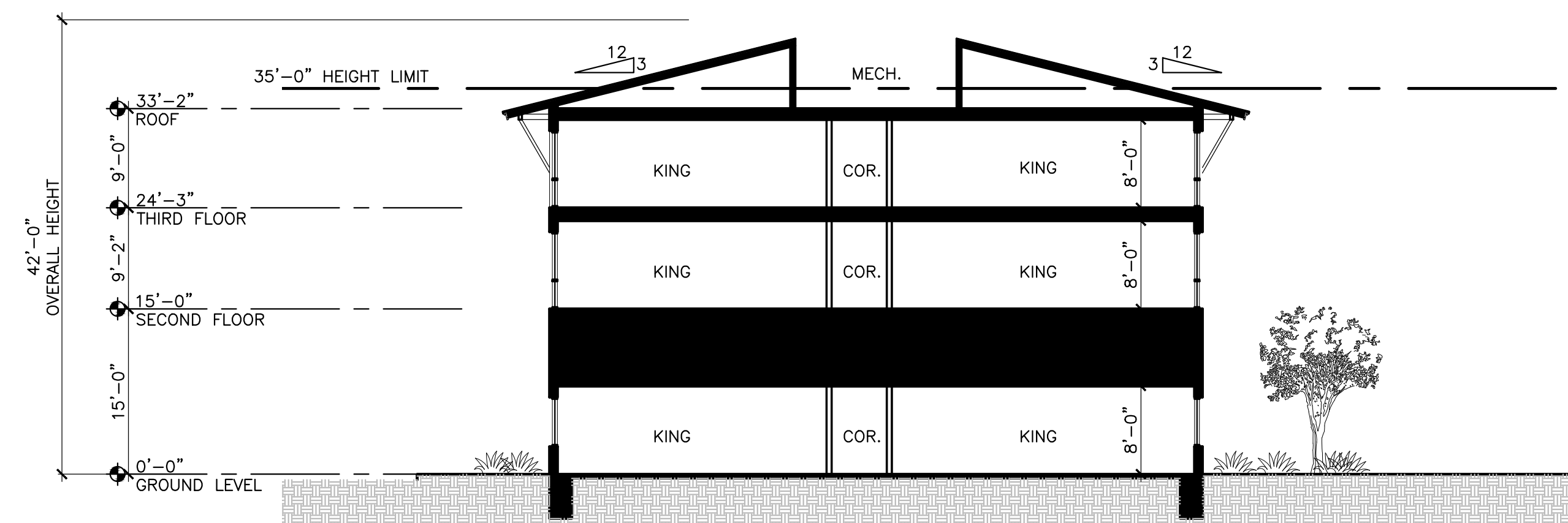
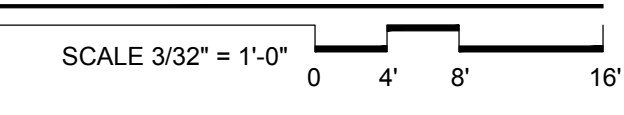
SHEET **11** OF



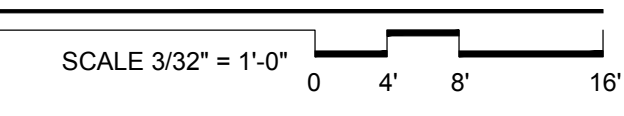
**A** SECTION



**B** SECTION



**C** SECTION



REVISION #	SYMBOL	DESCRIPTION OF CHANGE	APPROVED	DATE

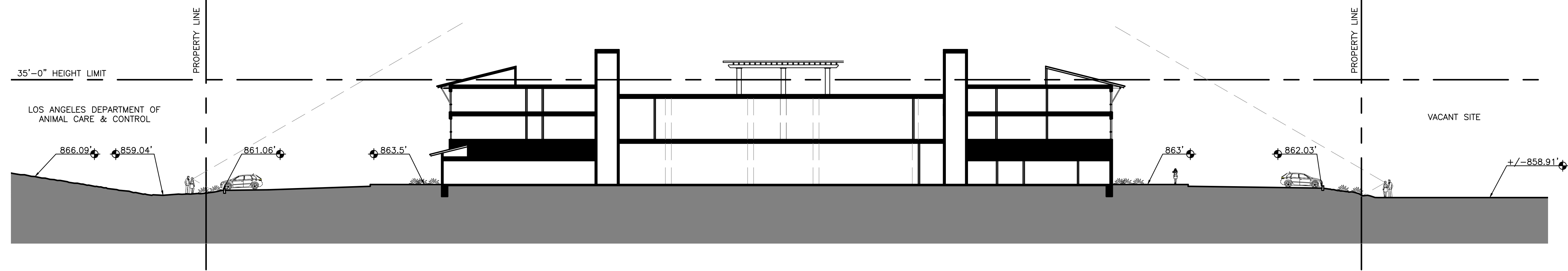
PREPARED BY:  
**ACRM**  
 ANTHONY COOK + ROBERT MOHRILL  
 ARCHITECTS + INTERIORS  
 PROJECT ARCHITECT  
 11/23/15  
 DATE

CITY OF AGOURA HILLS APPROVAL

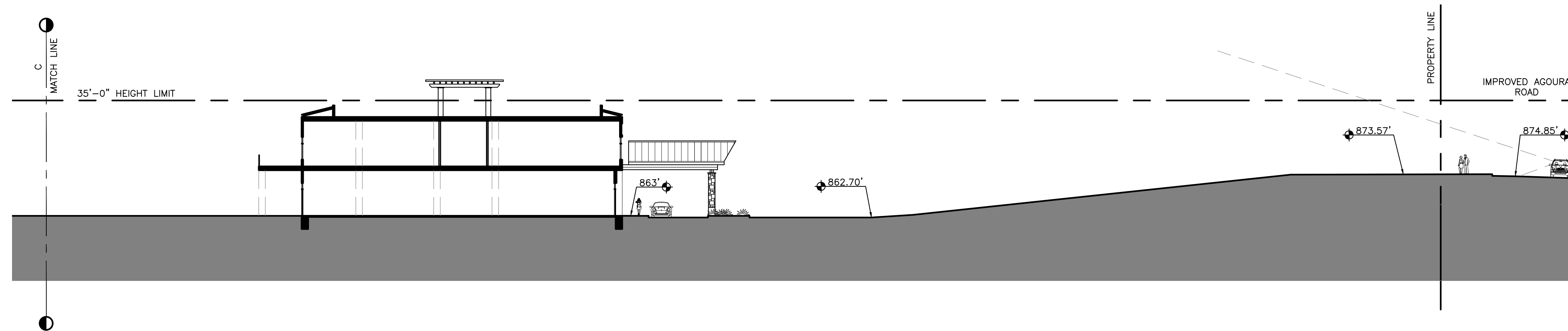
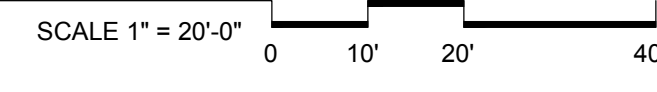
REVIEWED BY \_\_\_\_\_ DATE \_\_\_\_\_ DATE \_\_\_\_\_ RCE NO. \_\_\_\_\_ EXP DATE \_\_\_\_\_

**MARRIOTT COURTYARD & TOWNEPLACE SUITES**  
 29505 & 29515 AGOURA ROAD  
 AGOURA HILLS, CALIFORNIA 91301

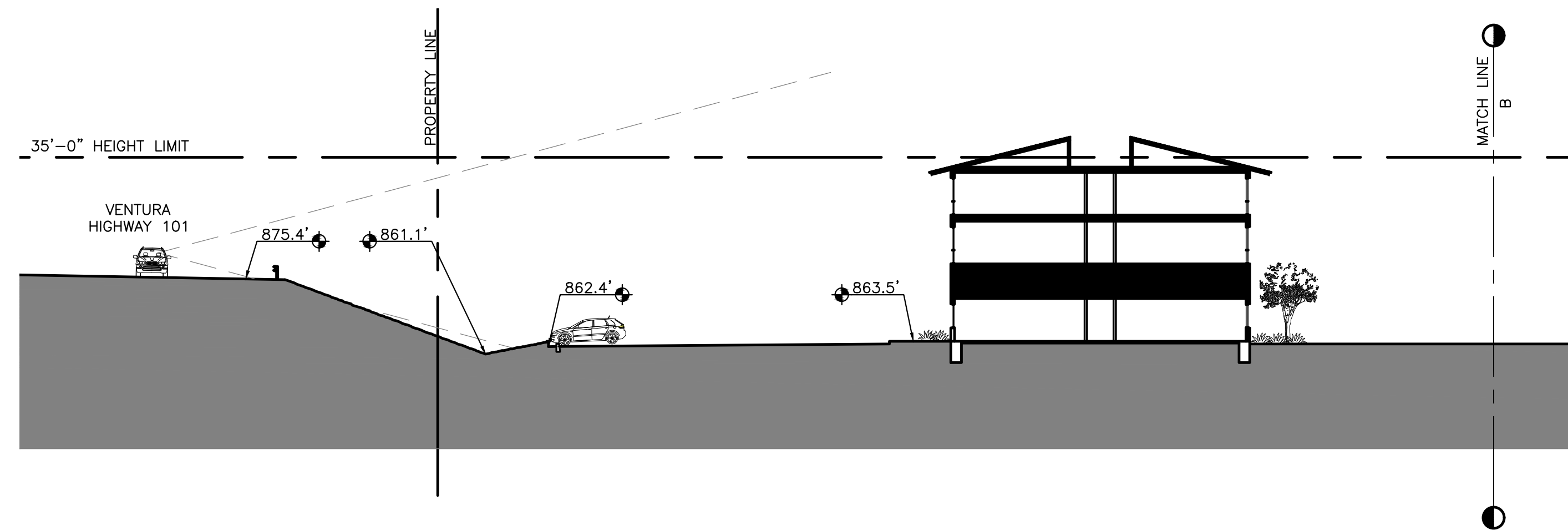
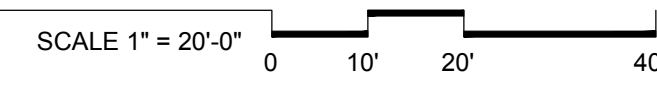
SHEET **12** OF \_\_\_\_



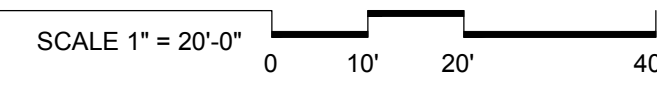
**A** LINE OF SIGHT STUDY - WEST - EAST



**B** LINE OF SIGHT STUDY - NORTH - SOUTH



**C** LINE OF SIGHT STUDY - NORTH - SOUTH



REVISION #	SYMBOL	DESCRIPTION OF CHANGE	APPROVED	DATE

PREPARED BY:  
**ACRM**  
ANNEBEE BOON BOWERS MOBELL ARCHITECTS + INTERIORS  
 PROJECT ARCHITECT  
 11/23/15  
 DATE

CITY OF AGOURA HILLS APPROVAL

REVIEWED BY	DATE	DATE	RCE NO.	EXP DATE

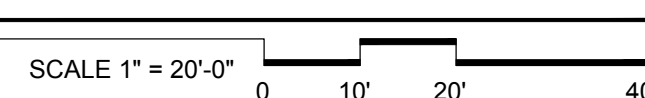
**MARRIOTT COURTYARD & TOWNEPLACE SUITES**  
 29505 & 29515 AGOURA ROAD  
 AGOURA HILLS, CALIFORNIA 91301

SHEET **13** OF \_\_\_\_



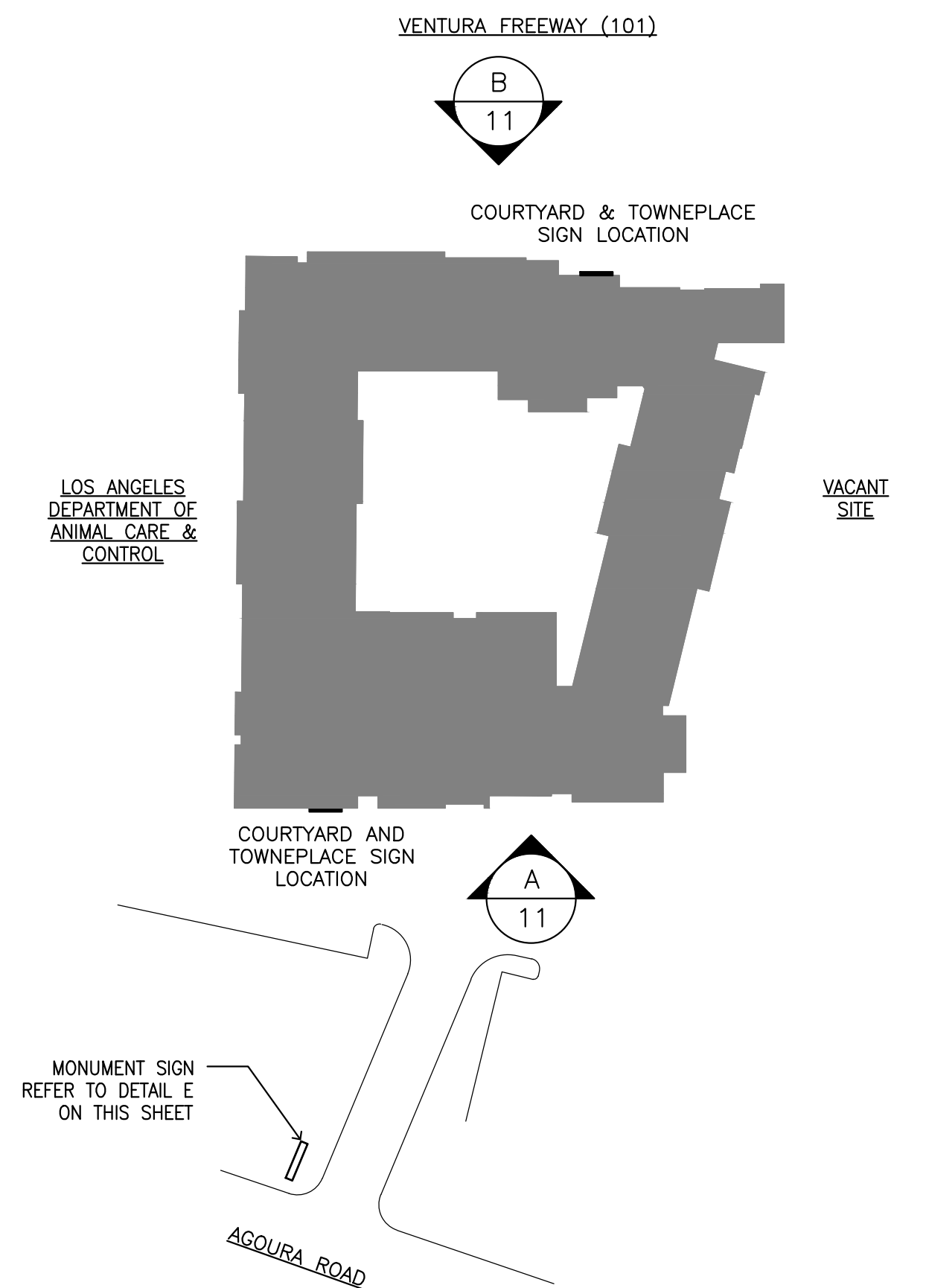
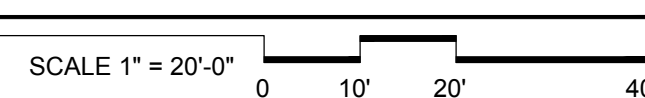
TOTAL AREA: 87 SQ. FT.

**A** SOUTH ELEVATION - SIGN LOCATION



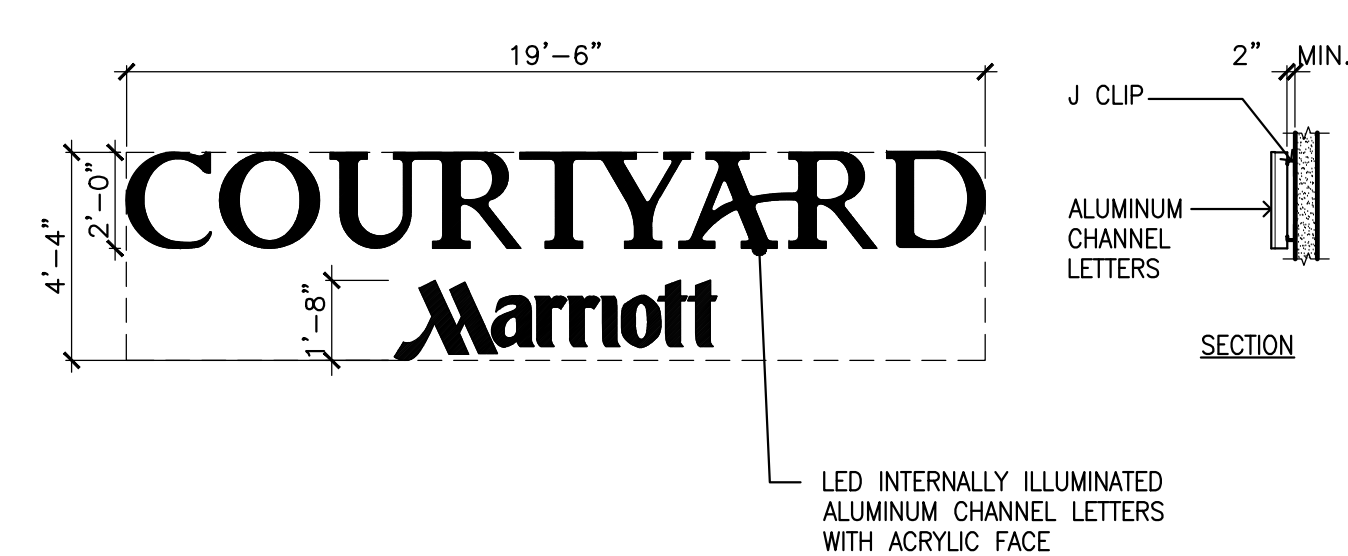
TOTAL AREA: 87 SQ. FT.

**B** NORTH ELEVATION - SIGN LOCATION

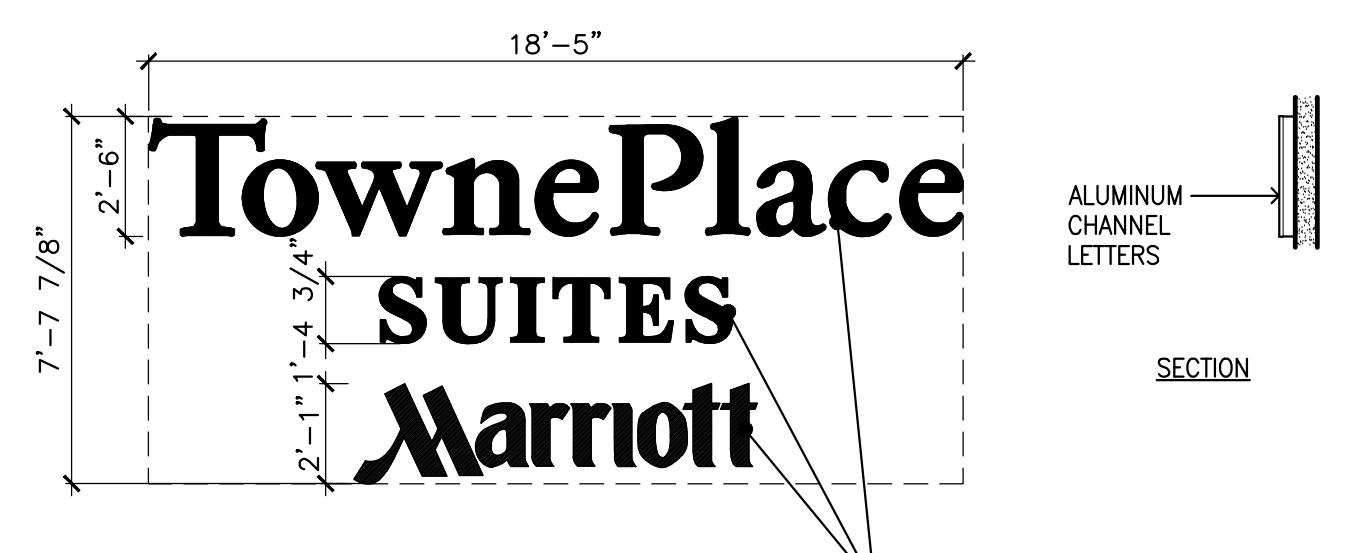
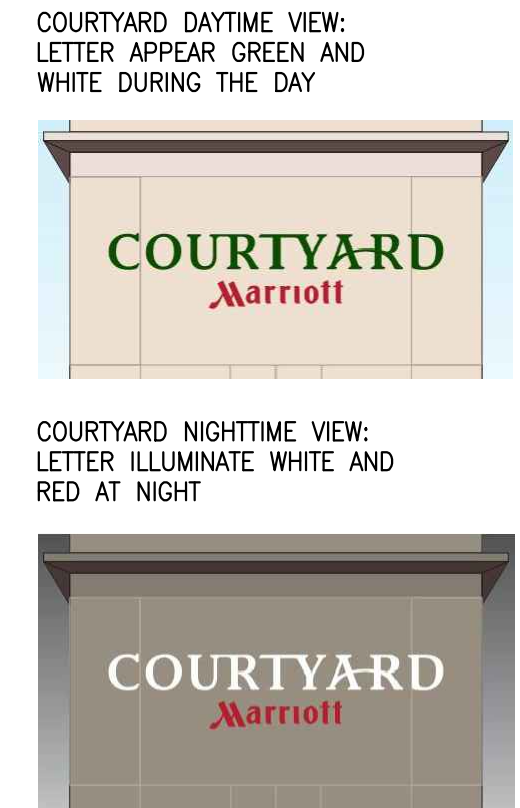


**C** PLAN - SIGN LOCATION

N.T.S.



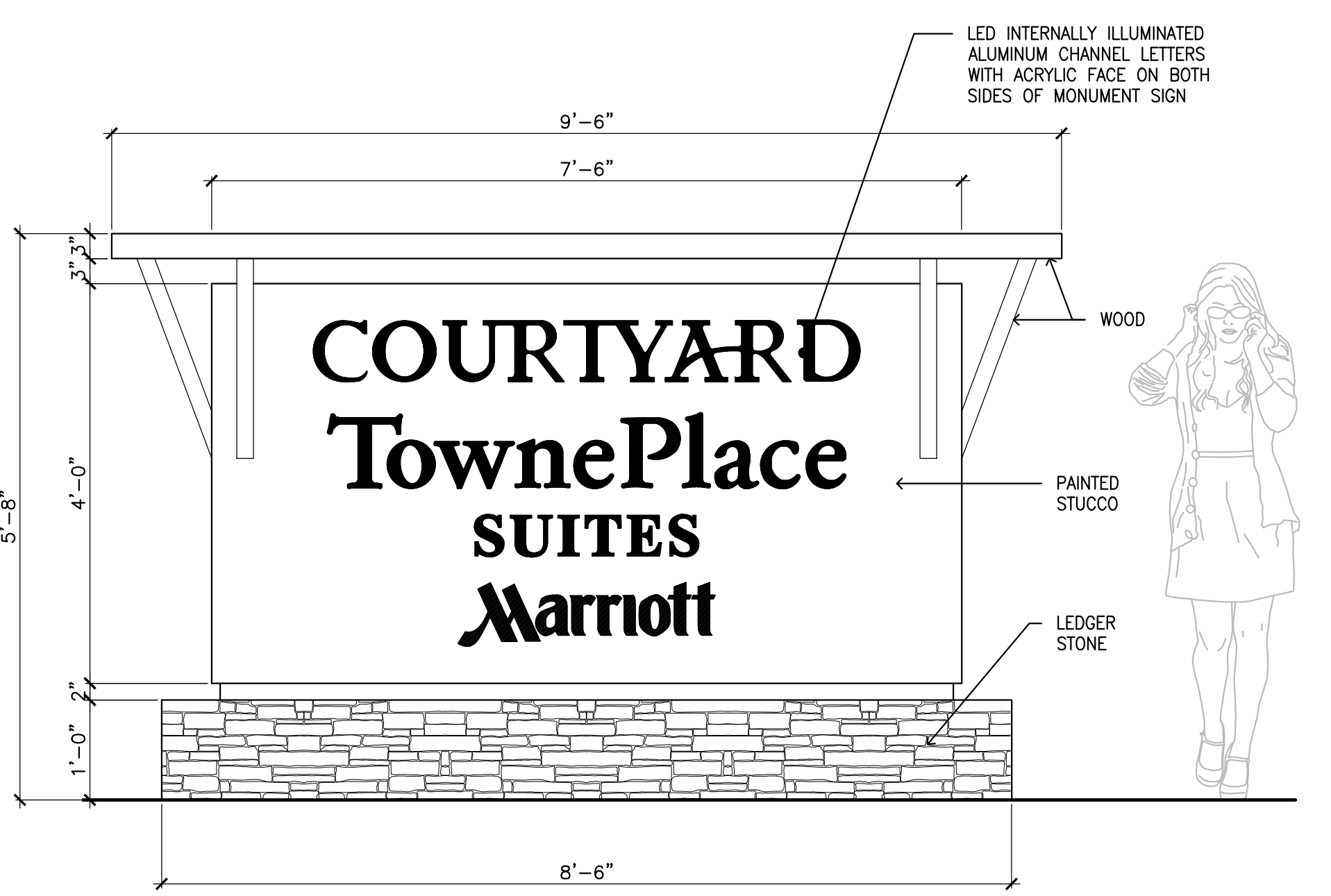
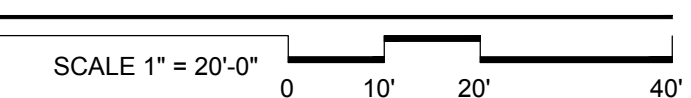
TOTAL AREA: 84.5 SF



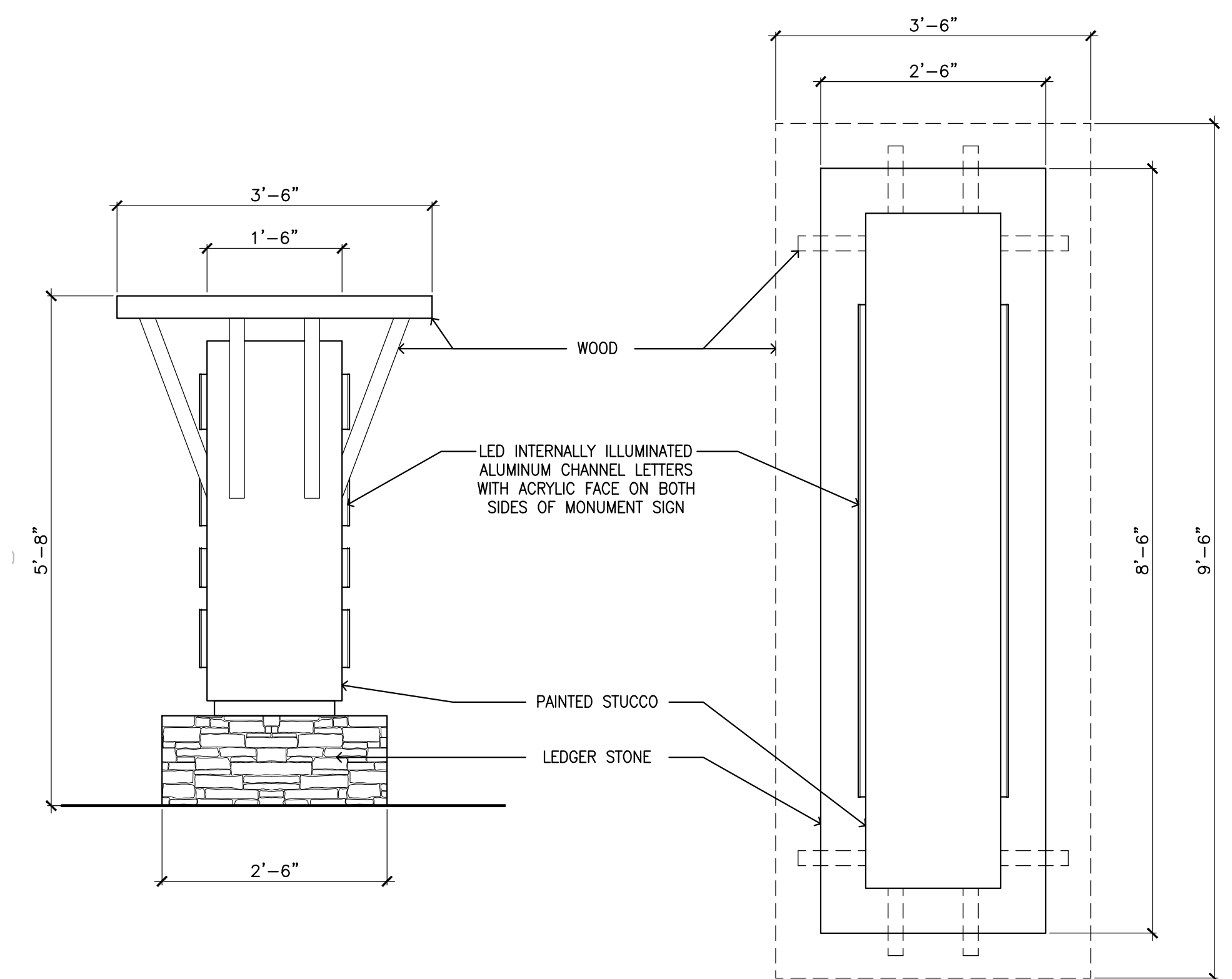
TOTAL AREA: 139.7 SF



**D** SIGN DESIGN



FRONT VIEW



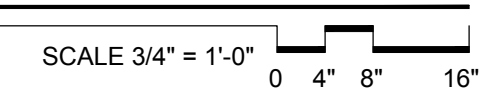
SIDE VIEW

PLAN VIEW



REALISTIC VIEW (N.T.S.)

**E** MONUMENT SIGN DESIGN



REVISION #	SYMBOL	DESCRIPTION OF CHANGE	APPROVED	DATE

PREPARED BY:  
  
 ARCHITECTS + INTERIORS  
 PROJECT ARCHITECT  
 DATE: 11/23/15

CITY OF AGOURA HILLS APPROVAL

REVIEWED BY	DATE	DATE	RCE NO.	EXP DATE



MARRIOTT COURTYARD & TOWNEPLACE SUITES  
 29505 & 29515 AGOURA ROAD  
 AGOURA HILLS, CALIFORNIA 91301

SHEET 14 OF 14



**A** VIEW FROM THE NORTHEAST FROM HWY 101 - VENTURA FREEWAY

N.T.S.

KEY MAP

N.T.S.



REVISION #	SYMBOL	DESCRIPTION OF CHANGE	APPROVED	DATE

PREPARED BY:

**ACRM**  
ANNE BOON BOWEN MORILL  
ARCHITECTS + INTERIORS

PROJECT ARCHITECT

11/23/15  
DATE



CITY OF AGOURA HILLS APPROVAL

REVIEWED BY	DATE	RCE NO.	EXP DATE



**MARRIOTT COURTYARD & TOWNEPLACE SUITES**  
29505 & 29515 AGOURA ROAD  
AGOURA HILLS, CALIFORNIA 91301

SHEET **15** OF \_\_\_\_



**B** VIEW FROM THE SOUTHWEST FROM AGOURA ROAD N.T.S.

KEY MAP N.T.S.



REVISION #	SYMBOL	DESCRIPTION OF CHANGE	APPROVED	DATE

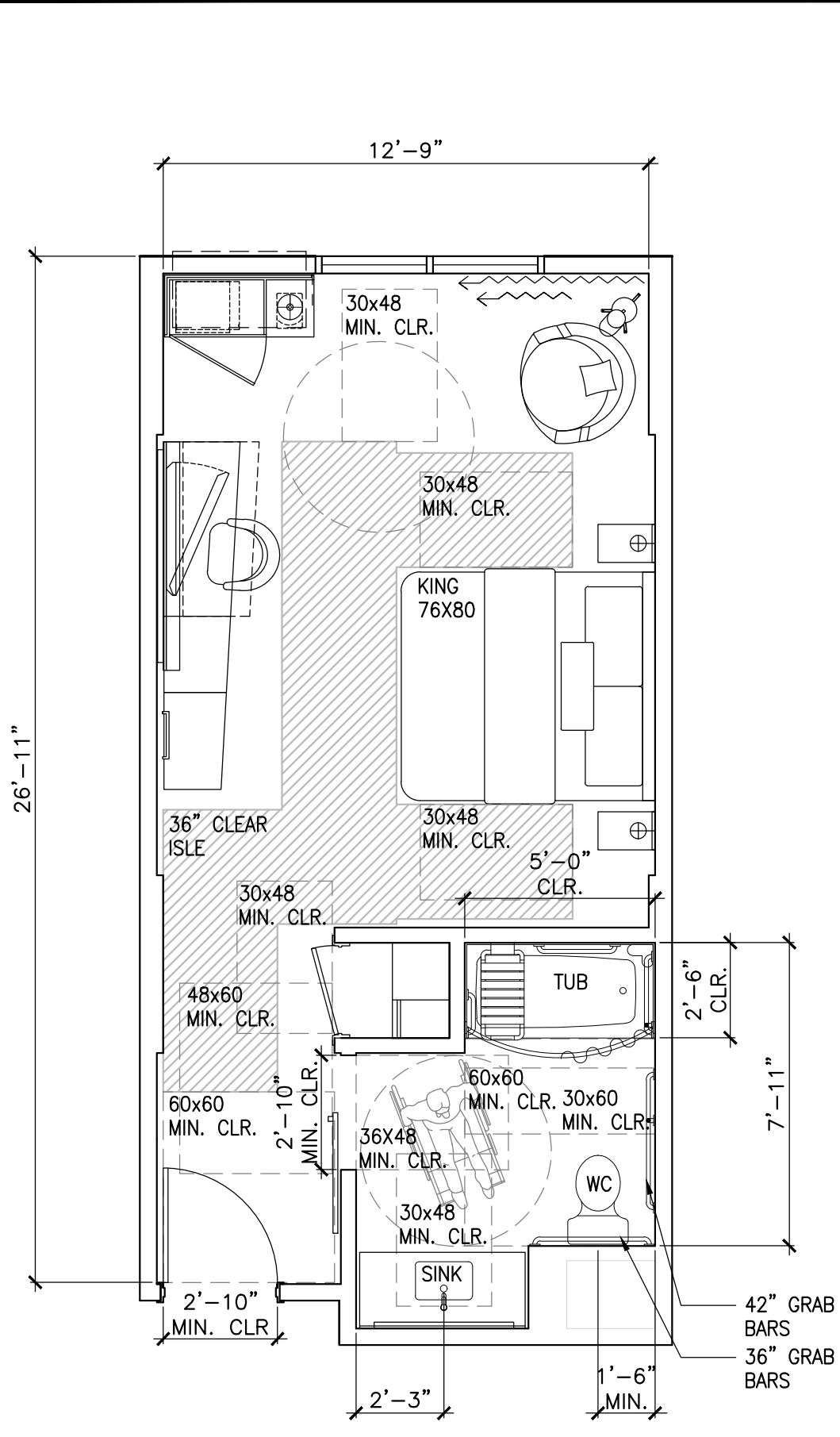
PREPARED BY:  
**ACRM**  
ANNE BOON BOHNS MOHLL  
 ARCHITECTS + INTERIORS  
 PROJECT ARCHITECT  
  
 11/23/15  
 DATE

CITY OF AGOURA HILLS APPROVAL

REVIEWED BY _____	DATE _____	DATE _____	RCE NO. _____	EXP DATE _____
-------------------	------------	------------	---------------	----------------

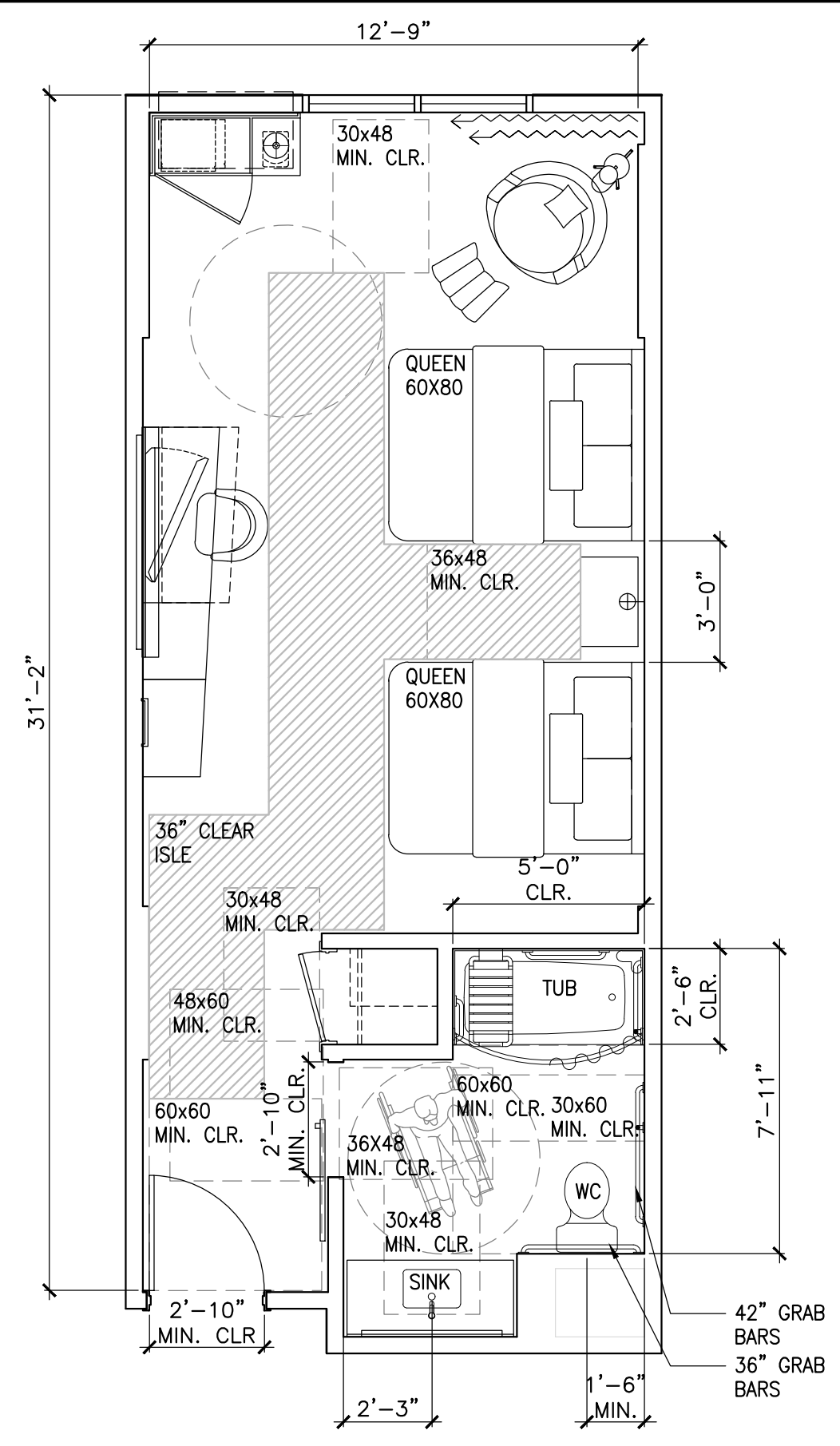


**MARRIOTT COURTYARD & TOWNEPLACE SUITES**  
 29505 & 29515 AGOURA ROAD  
 AGOURA HILLS, CALIFORNIA 91301  
 SHEET **16** OF \_\_\_\_



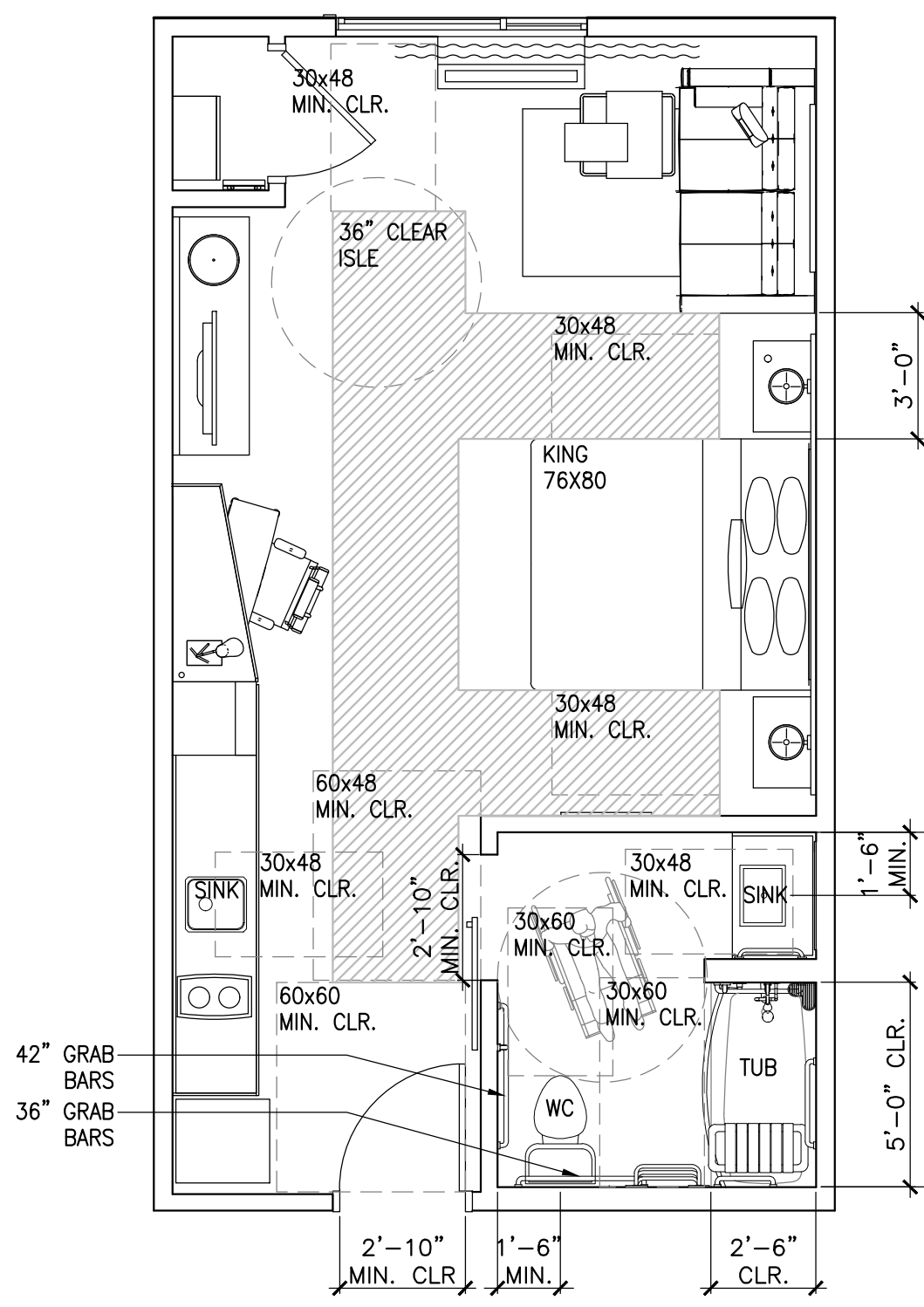
COURTYARD ACCESSIBLE KING

SCALE: 1/4" = 1'-0"



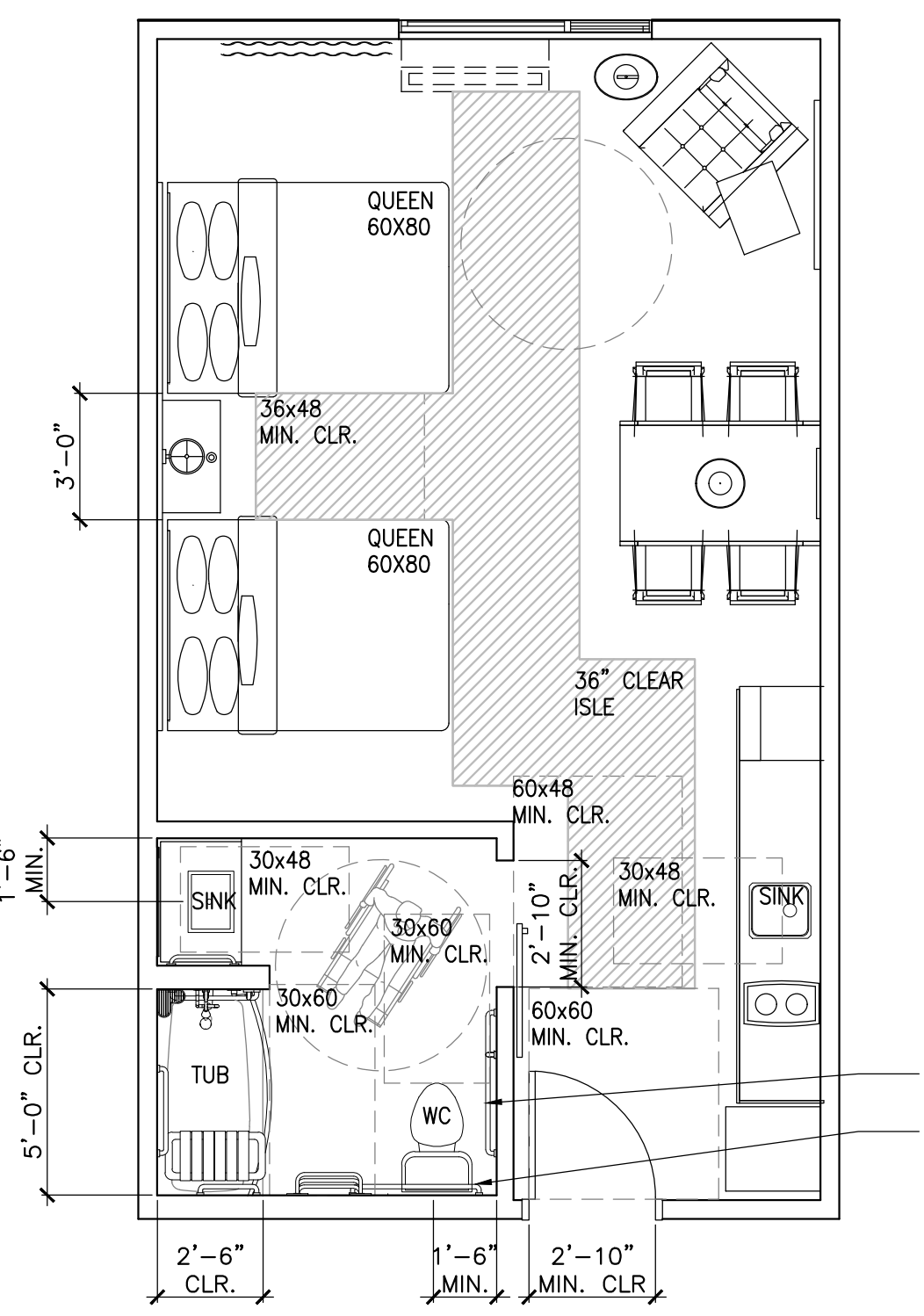
COURTYARD ACCESSIBLE DOUBLE QUEEN

SCALE: 1/4" = 1'-0"



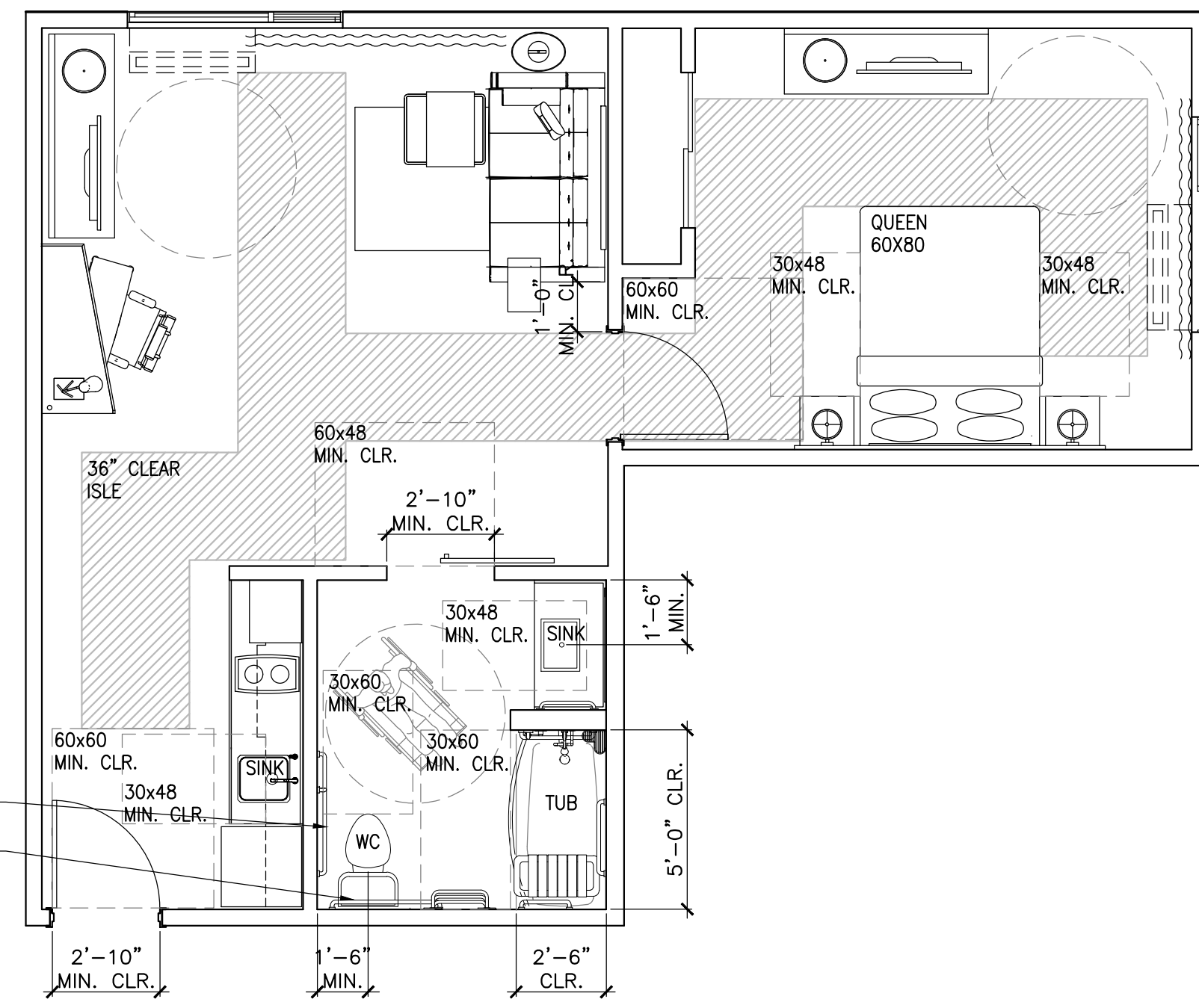
TOWNEPLACE ACCESSIBLE STUDIO

SCALE: 1/4" = 1'-0"



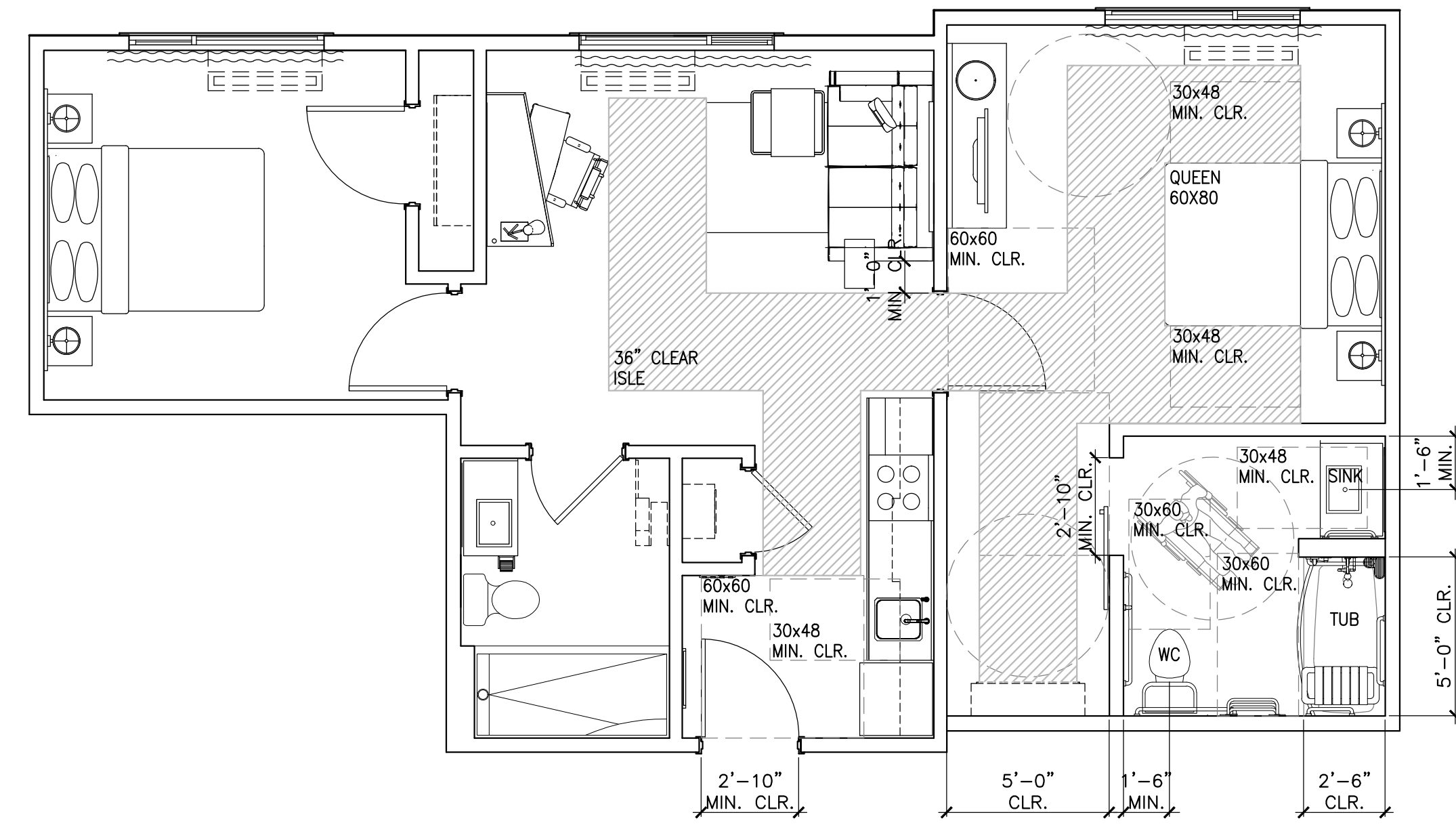
TOWNEPLACE ACCESSIBLE DOUBLE QUEEN

SCALE: 1/4" = 1'-0"



TOWNEPLACE ACCESSIBLE DOUBLE ONE BEDROOM

SCALE: 1/4" = 1'-0"



TOWNEPLACE ACCESSIBLE TWO BEDROOMS

SCALE: 1/4" = 1'-0"

REVISION #	SYMBOL	DESCRIPTION OF CHANGE	APPROVED	DATE

PREPARED BY:  
  
 PROJECT ARCHITECT  
  
 DATE: 11/23/15

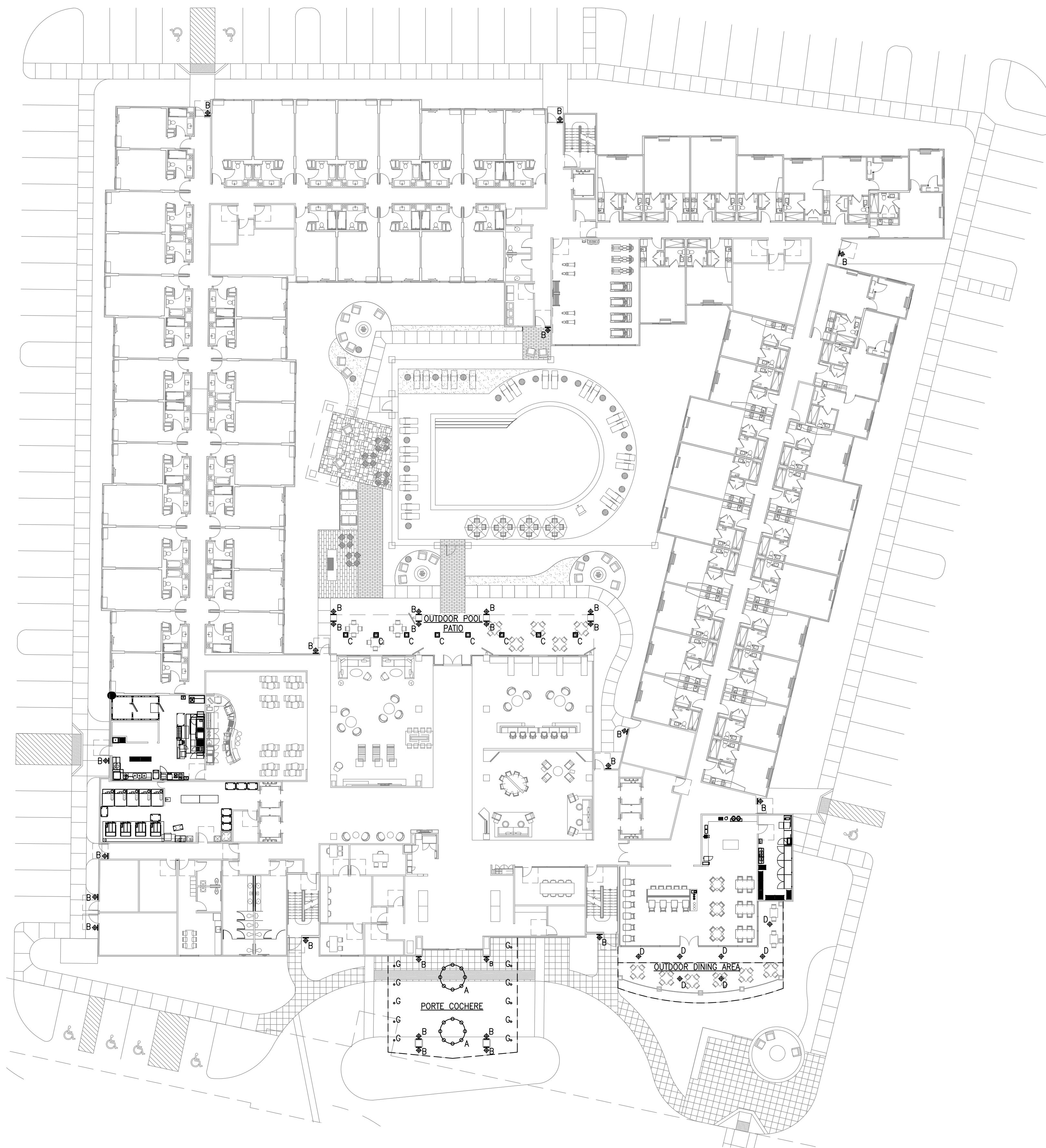
CITY OF AGOURA HILLS APPROVAL

REVIEWED BY	DATE	DATE	RCE NO.	EXP DATE



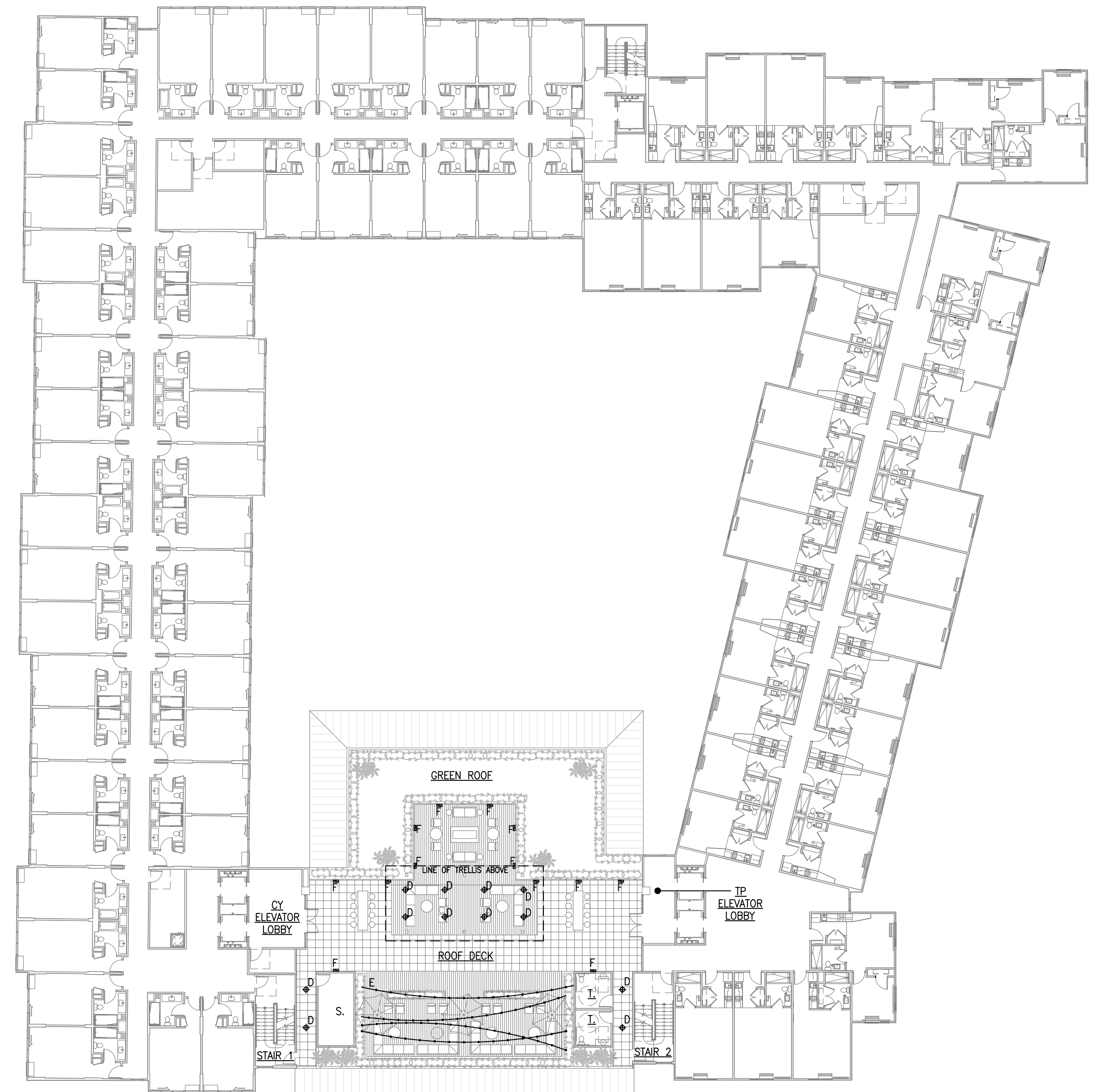
**MARRIOTT COURTYARD & TOWNEPLACE SUITES**  
 29505 & 29515 AGOURA ROAD  
 AGOURA HILLS, CALIFORNIA 91301  
 SHEET 17 OF \_\_\_\_\_





**GROUND FLOOR EXTERIOR LIGHTING PLAN**

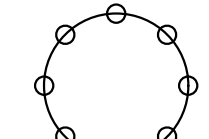

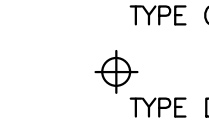
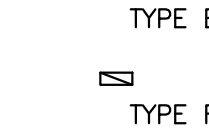

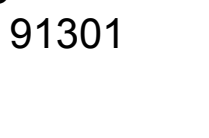
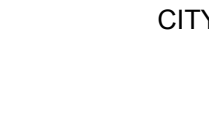
SCALE 1" = 20'-0" 0 10' 20' 40'



**THIRD FLOOR EXTERIOR LIGHTING PLAN**

SCALE 1" = 20'-0" 0 10' 20' 40'

**LIGHTING LEGEND**

-  TYPE A DECORATIVE PENDANT LIGHTING FIXTURE AT PORTE COCHERE
-  TYPE B DECORATIVE WALL SCONCE AT SECONDARY ENTRANCES
-  TYPE C DECORATIVE PENDANT LIGHTING FIXTURE AT OUTDOOR POOL PATIO
-  TYPE D DECORATIVE PENDANT LIGHTING FIXTURE AT OUTDOOR PATIO AND ROOF DECK
-  TYPE E STRING TIVOLLI LIGHT FIXTURE AT ROOF DECK
-  TYPE F LOW LEVEL STEP LIGHT 12" AFF. AT ROOF DECK
-  TYPE G UPLIGHT AT PORTE COCHERE

REVISION #	SYMBOL	DESCRIPTION OF CHANGE	APPROVED	DATE

PREPARED BY:  
  
 ANTHONY ROSS • ROBERT MORILL  
 ARCHITECTS • INTERIORS  
 PROJECT ARCHITECT  
 11/23/15  
 DATE

CITY OF AGOURA HILLS APPROVAL

REVIEWED BY \_\_\_\_\_ DATE \_\_\_\_\_ RCE NO. \_\_\_\_\_ EXP DATE \_\_\_\_\_



**MARRIOTT COURTYARD & TOWNEPLACE SUITES**  
 29505 & 29515 AGOURA ROAD  
 AGOURA HILLS, CALIFORNIA 91301

SHEET **18** OF \_\_\_\_\_

Fixture #	CH7870
Style	Pendant
Project	Quantity



TYPE A

**Available Specifications:**

**Dimensions and Lamping:**

- CH7870-96** 96" A x 144" B x 20" C
  - F 16-13W QD
  - FF 16-26W QD
  - LED LED
- CH7870-108** 108" A x 144" B x 22" C
  - F 16-26W QD
  - FF 16-32W TT
  - LED LED

\*OAH is standard unless specified otherwise

**Voltage Options:**

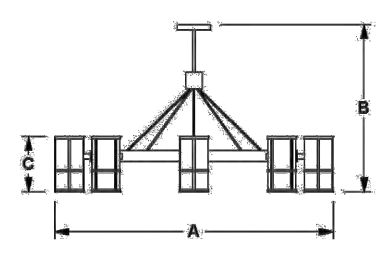
- 1 120V
- 2 277V
- MVT Multi-Volt (120V thru 277V)

**Diffusers:**

- WA White Acrylic
- GR Grey Alabaster Acrylic
- WS White Alabaster Acrylic
- CA Custom Acrylic
- FA Beige Alabaster Acrylic
- HPA Hand Painted Acrylic

**Finishes:**

- PAL Aluminum
- PBR Bronze
- CPF Custom Painted Finish
- PHB Hammered Bronze
- PLB Light Bronze
- PNL Nickel
- PSB Satin Black
- AB Premium Antique Brass
- PB Premium Polished Brass
- PAB Antique Brass
- PBB Brushed Brass
- PDB Dark Bronze
- PHC Hammered Copper
- PMW Matte White
- PRB Oil Rubbed Bronze
- PSG Satin Gold
- PA Premium Brushed Aluminum
- PC Premium Polished Chrome
- PBW Black Winkie
- PCM Copper
- PDG Deep Gold
- PHS Hammered Silver
- PHM Hammered Metal
- PPA Patina
- PPW White Winkie
- BB Premium Brushed Brass
- BB Premium Satin Nickel



Custom sizes and finishes available upon request.

Incandescent and/or fluorescent lamps not included.

Camman reserves the right to make design changes without prior notice.

Unless otherwise specified, mounting is to a 4 inch octagonal junction box. Structural mounting is required for fixtures over 50 lbs. Please contact the factory for specific mounting instructions.

Photometric information available at [www.cammanlighting.com](http://www.cammanlighting.com)

Fixture approved for indoor & damp locations. Not recommended for outdoor locations.

THIS FIXTURE WILL BE CUSTOM MADE TO BE APPROPRIATE FOR OUTDOOR USE

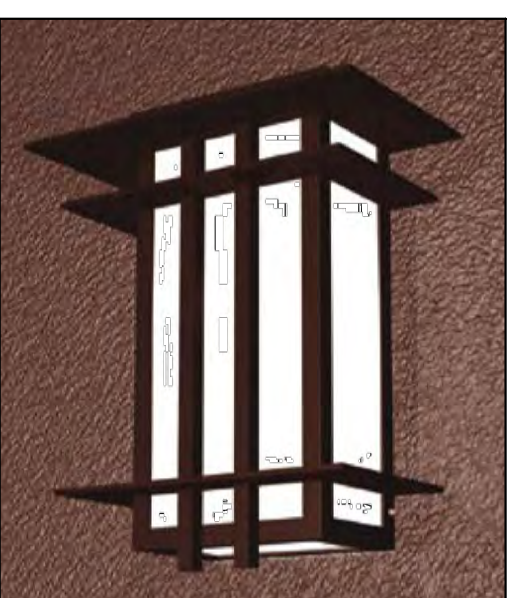


CAMMAN LIGHTING | DERRY, PA 15627 | (724) 539-7670 | WWW.CAMMANLIGHTING.COM

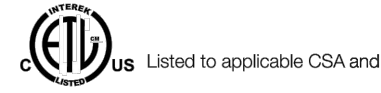
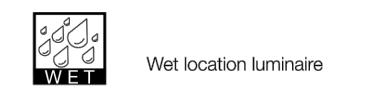
**PAMPAS®**  
TPWM - Wall Mount

**STANDARD FEATURES**

- Classic architectural design
- Three sizes - 10.5", 14" and 18.5"
- Heavy gauge construction suitable for rigorous outdoor environments
- Extruded and laser cut aluminum housing
- Compact fluorescent and HID sources
- Opal polycarbonate lens standard
- HPF magnetic ballasts for HID and electronic ballasts for compact fluorescent
- Stainless steel hardware



TYPE B



Listed to applicable CSA and UL standards

**ORDERING CODE GUIDE**

SERIES	MODEL	SIZE	LAMP	VOLT	COLOR	OPTIONS
TPWM	4200	S = small	PLC13 2x PLC13 PLC09	120 277 347	TEXTURED FINISHES TAL = textured aluminum TBK = textured black TBS = textured bronze TWH = textured white	WML = white faux alabaster lens BML = brown faux alabaster lens EML = emergency ballast
		M = medium	50HPS PLT32 PLT42 2x PLC26 2x PLT32 50HPS 70HPS 50MH 70MH		SMOOTH FINISHES AL = silver/white BK = black BY = butterscup yellow DBZ = dark bronze DO = deep orange EG = emerald green RB = royal blue RR = rich red WH = white	
		L = large	2x PLT42 2x CF40 150HPS 100MH 150MH		RAL colors available	

- Notes:
- Available for large only with PL temping
- Not all voltages available for all lamp types, please confirm with factory
- PLC/PLT/CF lamps are 4 pin, HPS/MH lamps are medium base (coated)

T 800.441.1771 F 708.422.3341 www.pacillumination.com



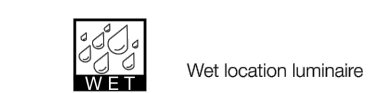
**PAMPAS®**  
TPPM - Pendant

**STANDARD FEATURES**

- Classic architectural design
- Three sizes - 10", 14.5" and 20" square
- Heavy gauge aluminum construction suitable for rigorous outdoor environments
- Four optical distributions, two lens options
- Heavy duty ceiling canopy with 3/4" diameter stem
- 30" hang straight canopy
- HPF magnetic ballasts for HID and electronic ballasts for compact fluorescent
- Stainless steel hardware
- Textured or smooth powder coated finishes
- Optional matching wall arm mount available



TYPE C



Listed to applicable CSA and UL standards

**ORDERING CODE GUIDE**

SERIES	MODEL	SIZE	LAMP	VOLT	OPTICS	COLOR	MOUNTING	OPTIONS
TPPM-I	4000	S = small	2x PLC13 PLT32 PLT42 50HPS 50HPS	120 277 347	0 = no optics 3 = Type III 5 = Type V SL = 45" stack louvers	TEXTURED FINISHES TAL = textured aluminum TBK = textured black TBS = textured bronze TWH = textured white	SM18 = 18" long stem SM12 = 12" long stem SM16 = 16" long stem SMXX = custom length stem	SSTM = solid bottom WML = white faux alabaster lens BML = brown faux alabaster lens HSS = house side shield
TPPM-II		M = medium	2x PLC26 2x PLT32 2x PLT42 70HPS 100HPS 50MH 70MH			SMOOTH FINISHES AL = silver/white BK = black BY = butterscup yellow DBZ = dark bronze DO = deep orange EG = emerald green RB = royal blue RR = rich red WH = white	CM = ceiling flush mount WAM = wall arm mount	
		L = large	3x PLC26 3x PLT32 3x PLT42 2x CF40 3x CF40 4x CF40 150HPS 100MH 170MH			RAL colors available		

- Notes:
- PLC/PLT lamps are 4 pin, HPS/MH lamps are medium base
- Not all voltages available for all lamp types, please confirm with factory
- For TPPM-II with clear lens, Type V glass refractor standard
- 120V HPF reactor ballast only
- Available for TPPM-I only, recommended with "O" optics

T 800.441.1771 F 708.422.3341 www.pacillumination.com



**SINGAPORE MODERNE OUTDOOR 817482ST**

Outdoor lantern in dark bronze patina finish with off-white interior glass surrounded by a clear, textured outdoor glass.

U.S. DIMENSIONS & DETAILS		METRIC DIMENSIONS & DETAILS	
DIMENSIONS	H 22" x W 14"	DIMENSIONS	H 55.88cm x W 35.56cm
MIN/MAX HEIGHT	27 - 119	MIN/MAX HEIGHT	67 - 302
WEIGHT	19 LBS	WEIGHT	8.63636363636 Kg.
BULB	CFL Mini Spiral	BULB	CFL Mini Spiral
WATTS	15	WATTS	13
BASE	GU 24	BASE	Medium
SOCKET	Ceramic	SOCKET	Ceramic
BULB QTY.	2	BULB QTY.	2
CHAIN/ROD LENGTH	8 ft	CHAIN/ROD LENGTH	244 cm

[http://www.fineartlamps.com/index.cfm?fuseaction=catalog.printProduct&product\\_id=1054](http://www.fineartlamps.com/index.cfm?fuseaction=catalog.printProduct&product_id=1054) 11/2/2015

**Commercial Grade Light String**

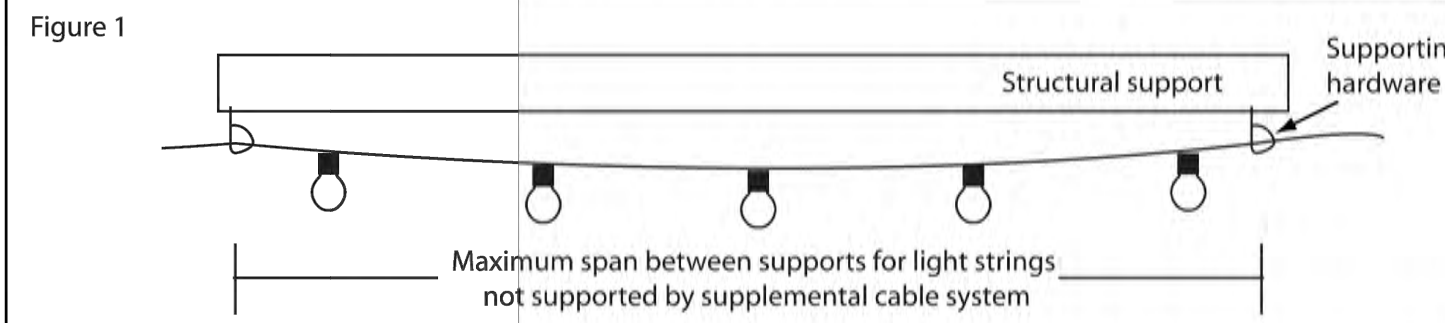
Installation instructions for LC, LS15, M and MS light string product for permanent installation

**SUSPENDING LIGHT STRINGS**

1. Light string must be securely attached to a support structure at each end of each span. See chart below for maximum span distances:

MODEL #	Max. span between supports
M and MS 24" spacing between sockets	10 sockets or 20'
LS15 with 15" spacing between sockets	15 sockets or 19'
LC with 12" spacing between bulbs	20 sockets or 20'

2. Secure light string to supporting hardware (eyebolts, brackets, etc., not provided) using cable ties (not included). See Figure 1.



3. For spans exceeding the above, use properly rated cable support system and cable ties (both not provided) and follow local codes for suspended structures and loads.

**CONNECTING LIGHT STRINGS TO POWER SOURCE**

**WARNING - RISK OF ELECTRIC SHOCK!!** Disconnect power at source prior to wiring and follow any required lock-out/tag-out procedures. Wiring instructions intended for use by qualified and licensed electrical contractors.

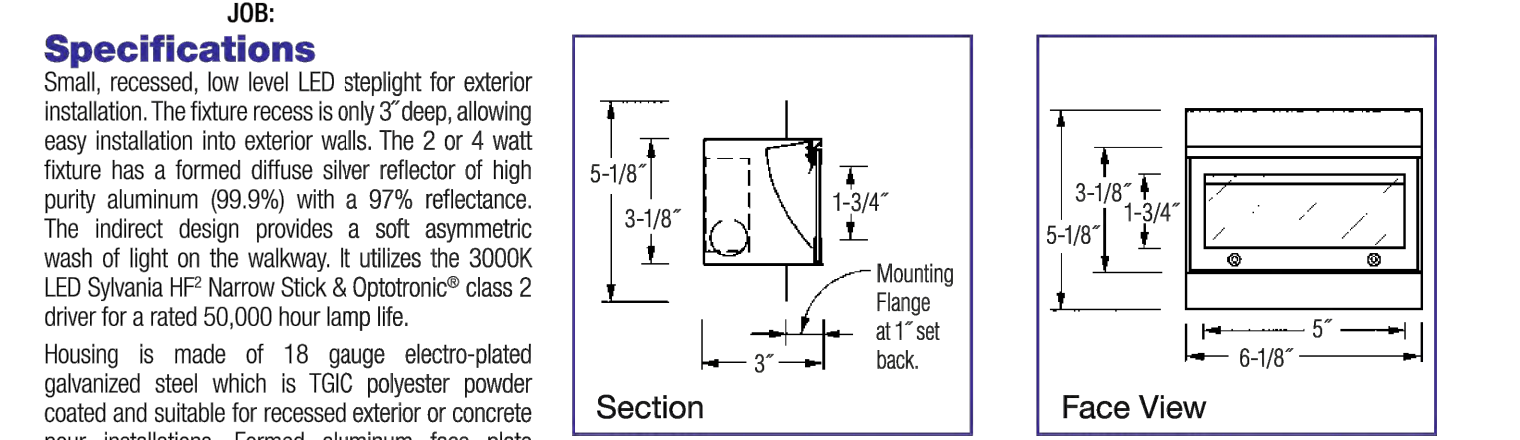
1. Located power source in properly rated junction box (not supplied) for indoor or outdoor application. See Figure 2.
2. Thread light string end through strain relief fitting (indoor installations) or water tight strain relief fitting (outdoor installations) and into junction box.
3. Connect light string to power source: smooth wire to black (hot) wire; ribbed wire to white (neutral) wire.
4. Ensure that no bare wires are exposed outside the electrical connections.
5. Power source may be switched with properly rated switch or dimmer control (not provided). For maximum run distances, see Table 1 on following page.

Note: Use 14AWG for connection to power source. Check local electrical codes for variations before installing or lamping light string.

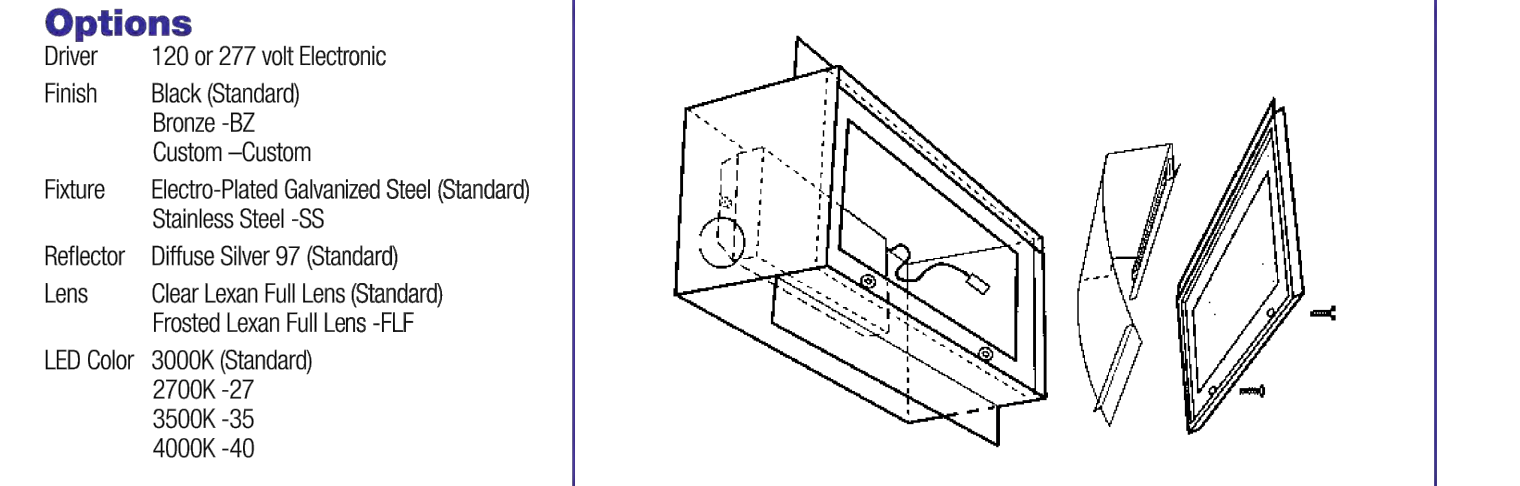


**TYPE F**  
**LS-EX SERIES**

RECESSED Exterior or Concrete Pour LED Low Level Stairlight



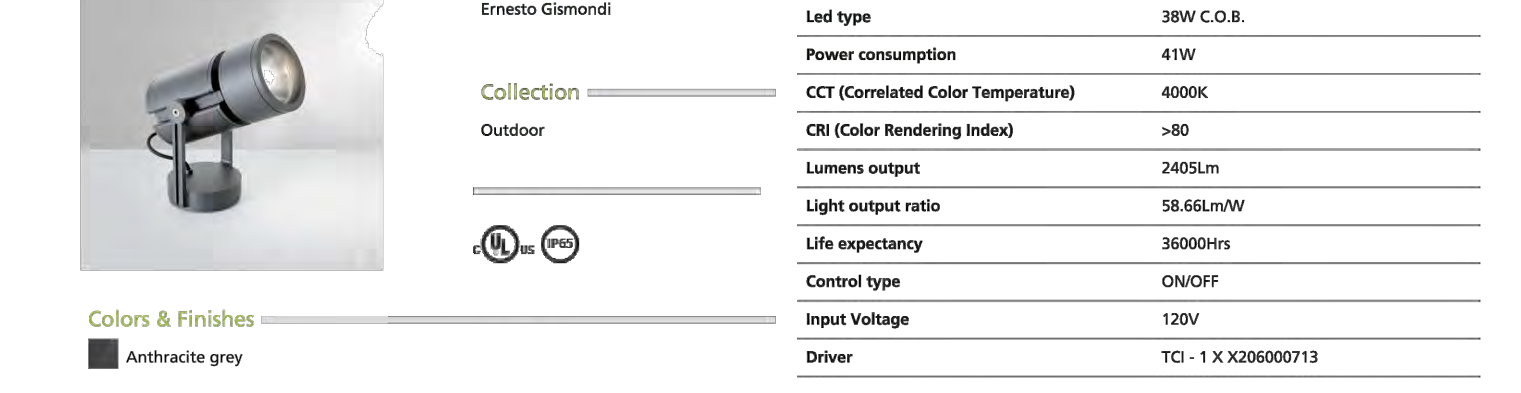
Model No.	Lamp
12W/LS-EX	1 Row, 2 watt White LED
14W/LS-EX	1 Row, 4 watt White LED



Note: Sylvania provides a 5 year warranty on the lamp, driver combination.

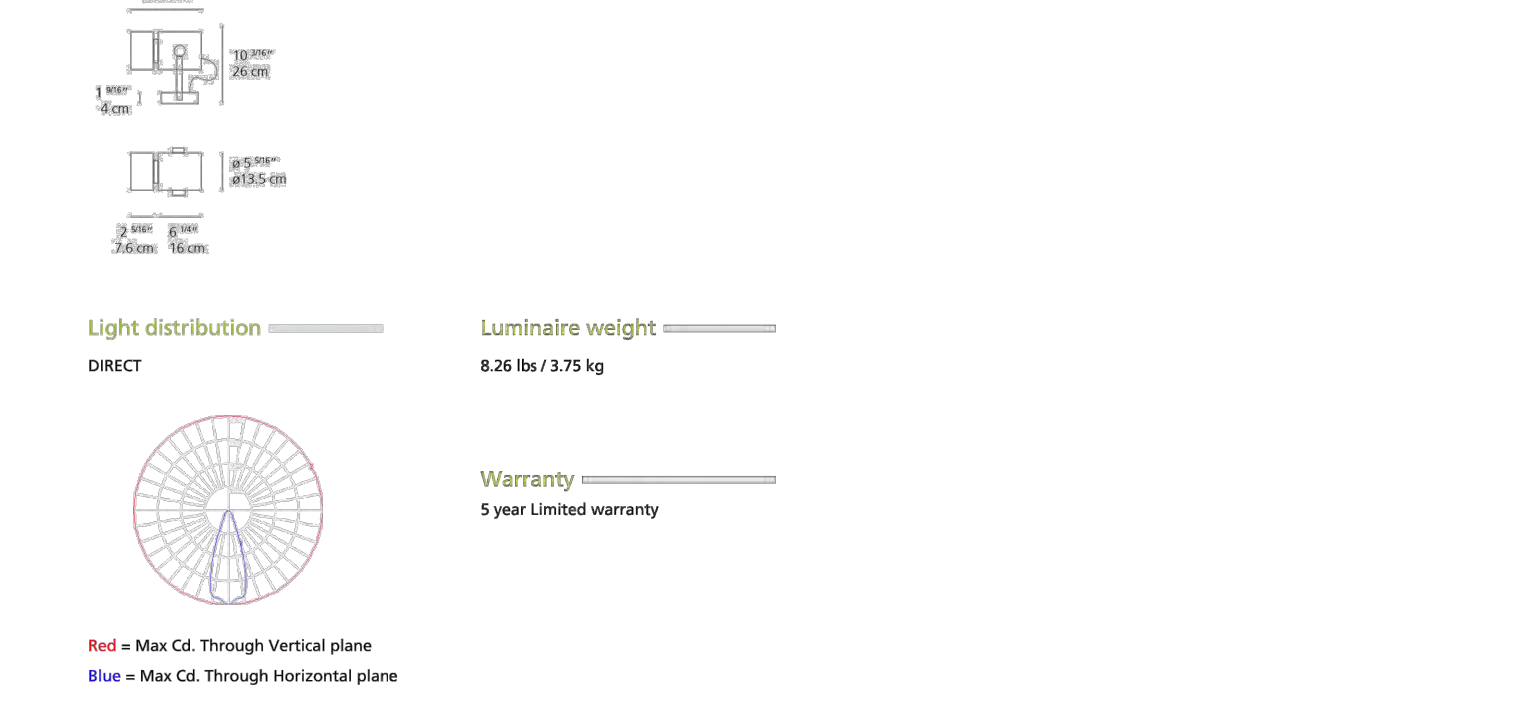
**TYPE G**  
**Cariddi 40 40° Wall Ceiling**

T418740N08



Design By	Specifications
Ernesto Gismondi	Led type 3RW C.O.B.
Collection Outdoor	Power consumption 41W
	CCT (Correlated Color Temperature) 4000K
	CRI (Color Rendering Index) >80
	Lumens output 2465lm
	Light output ratio 58.66lm/W
	Life expectancy 30000hrs
	Control type ON/OFF
	Input Voltage 120V
	Driver TCI - 1 X X20600713

Dimensions	Packaging
11.5" x 11.5" x 3.5"	1 Box
	1 X 15.96 in x 13.27 in x 14.29 in / 11.58 lbs - 50.7 cm x 33.7 cm x 36.3 cm / 5.252 kg



REVISION #	SYMBOL	DESCRIPTION OF CHANGE	APPROVED	DATE

PREPARED BY: **ACRM** ARCHITECTS + INTERIORS

PROJECT ARCHITECT: *[Signature]*

DATE: 11/23/15

CITY OF AGOURA HILLS APPROVAL

REVIEWED BY: \_\_\_\_\_ DATE: \_\_\_\_\_

RCE NO. \_\_\_\_\_ EXP DATE \_\_\_\_\_

**MARRIOTT COURTYARD & TOWNEPLACE SUITES**  
29505 & 29515 AGOURA ROAD  
AGOURA HILLS, CALIFORNIA 91301

SHEET 19 OF \_\_\_\_\_