

- SITE PLAN KEY NOTES:**
- BUILT UP FLAT ROOFING, COLOR: WHITE
  - ▣ CONCRETE TILE ROOF
  - ▤ METAL STANDING SEAM ROOF
  - ⊠ HVAC EQUIPMENT
  - ⊞ ROOF HATCH
  - ⊟ TRILLIS
  - ⊠ PARAPET
  - ⊡ AWNING BELOW
  - ⊢ ROOF VENT
  - ⊣ BALCONY BELOW

BUILDING ROOF PLANS  
SCALE: 1/8" = 1'-0"

REVISIONS

DRAWING RFD
COMPUTER FILE
DATE
11/22/2013
SCALE
JOB NO.
1886

This drawing is a contract document for the property of Blaine & Associates. It is not to be used for any other project without the written consent of Blaine & Associates. It is not to be used for any other project without the written consent of Blaine & Associates. It is not to be used for any other project without the written consent of Blaine & Associates.

Copyright Blaine & Associates  
All Rights Reserved

CORNERSTONE

AGOURA HILLS, CALIFORNIA

ARTHUR ROAD



Architecture  
3396 Willow Lane  
Westlake Village  
California Suite 200  
Phone 805-497-4700

SHEET
A3.0
BUILDING ROOF PLANS

REVISIONS	

DRAWING INFO	
COMPUTER FILE	
DATE	11/21/2013
SCALE	
JOB NO.	1086

These drawings are to be used for the purpose of building & construction. All design and construction details are subject to change without notice. The contractor shall be responsible for verifying all dimensions and materials. All dimensions shall be in feet and inches unless otherwise specified. All materials shall be approved by the architect prior to installation. All materials shall be installed in accordance with the manufacturer's instructions. All materials shall be installed in accordance with the applicable building codes. All materials shall be installed in accordance with the applicable building codes. All materials shall be installed in accordance with the applicable building codes.

Copyright © 2013 by Cornerstone Architecture & Associates  
All Rights Reserved

CORNERSTONE  
ARCHITECTURE & ASSOCIATES  
LAGUNA BEACH, CALIFORNIA

CORNERSTONE

LAGUNA BEACH



Architecture  
3396 Willow Lane  
Westlake Village  
California Suite 200  
Phone 805-497-4700

SHEET

A4.1

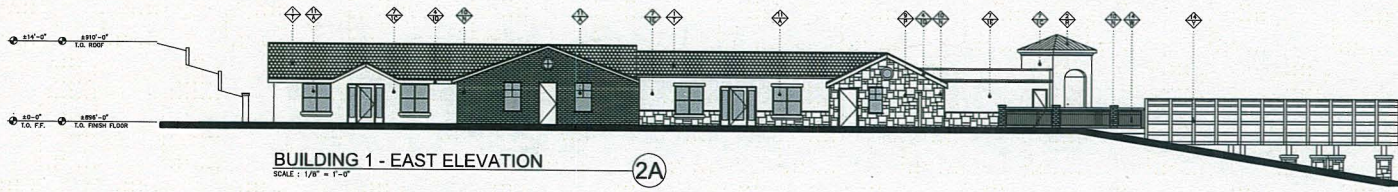
ELEVATIONS



**BUILDING 1 - CORNELL ROAD - WEST ELEVATION**

SCALE: 1/8" = 1'-0"

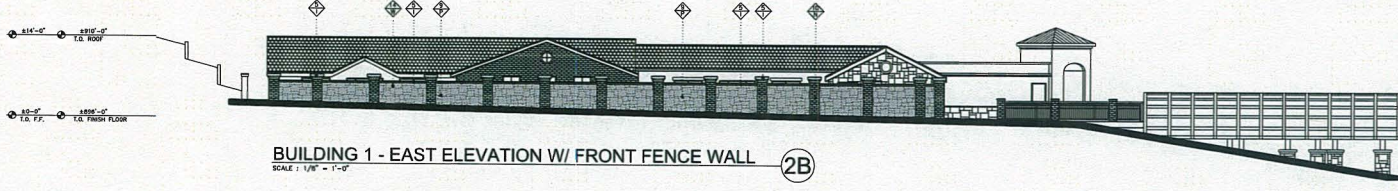
1



**BUILDING 1 - EAST ELEVATION**

SCALE: 1/8" = 1'-0"

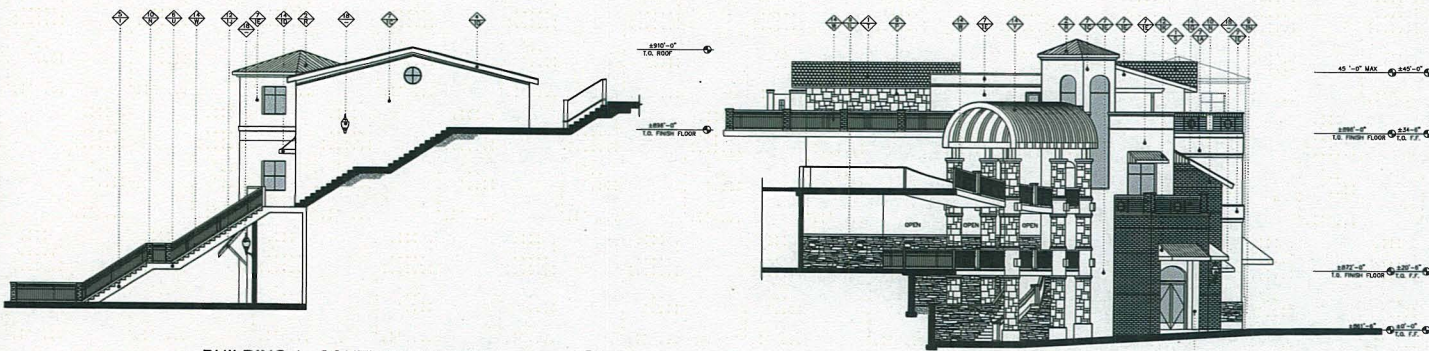
2A



**BUILDING 1 - EAST ELEVATION W/ FRONT FENCE WALL**

SCALE: 1/8" = 1'-0"

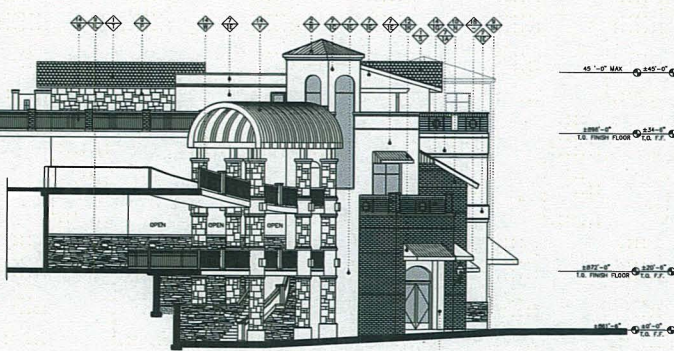
2B



**BUILDING 1 - SOUTH ELEVATION**

SCALE: 1/8" = 1'-0"

3



**BUILDING 1 - NORTH ELEVATION**

SCALE: 1/8" = 1'-0"

4

**COLOR/MATERIAL SCHEDULE**

**KEYNOTES**

**LEGEND:**  
 SEE MATERIAL SCHEDULE  
 SEE COLOR / FINISH SCHEDULE

**MATERIALS:**

- |                              |  |
|------------------------------|--|
| ◆ CONCRETE TILE ROOF         | ◆ DOUBLE PANE GLASS, TEMPERED              |
| ◆ STANDING SEAM ROOF         | ◆ SAWING FINISH                            |
| ◆ BUILT UP / SINGLE PLY ROOF | ◆ STAINLESS STEEL                          |
| ◆ WOOD                       | ◆ METAL                                    |
| ◆ PRECAST CONCRETE           | ◆ METAL WINDOW FRAME                       |
| ◆ CONCRETE                   | ◆ CONCRETE BLOCK                           |
| ◆ STUCCO                     | ◆ BONACE BY OTHERS                         |
| ◆ ALUMINUM STOREFRONT        | ◆ EXTERIOR LIGHTING<br>SEE LIGHTING SHEETS |
| ◆ STONE VENEER               | ◆ WOOD WINDOW FRAME                        |
| ◆ BRICK VENEER               | ◆ REVOULTE DOOR & FRAME                    |

**COLOR/FINISHES (GENERAL):**

- |   |   |
|---|---|
| ◆ PPG - CLEAR GLASS   | ◆ BRICK VENEER - OCEAN CORNING<br>BRICKS #12 (C64052)   |
| ◆ PPG - SOLARBAN 80   | ◆ STONE VENEER - OCEAN CORNING<br>BRICKS #12 (C64052)   |
| ◆ OPTIBLUE  | ◆ STONE VENEER - OCEAN CORNING<br>BRICKS #12 (C64052)   |
| ◆ WINDOW FRAME - KARNER<br>BLACK HOLZ                       | ◆ STONE VENEER - OCEAN CORNING<br>BRICKS #12 (C64052)   |
| ◆ WINDOW FRAME - KARNER<br>MEDIUM BRONZE HOLZ               | ◆ STONE VENEER - OCEAN CORNING<br>BRICKS #12 (C64052)   |
| ◆ WINDOW FRAME - KARNER<br>LIGHT BRONZE HOLZ                | ◆ STONE VENEER - OCEAN CORNING<br>BRICKS #12 (C64052)   |
| ◆ BRICK - SUNBELLA CANVAS<br>TANNEY BRICK #2012             | ◆ STONE VENEER - OCEAN CORNING<br>BRICKS #12 (C64052)   |
| ◆ BRICK - SUNBELLA FIRE/SST<br>TERRAZZO #2014               | ◆ STONE VENEER - OCEAN CORNING<br>BRICKS #12 (C64052)   |
| ◆ BRICK - SUNBELLA FIRE/SST<br>CRIMSON RED #2017            | ◆ STONE VENEER - OCEAN CORNING<br>BRICKS #12 (C64052)   |
| ◆ PAINT COLOR - DUNN EDWARDS<br>MODERN IVORY (DC #197)      | ◆ PAINT COLOR - DUNN EDWARDS<br>WHISPER (DEC 340)       |
| ◆ PAINT COLOR - DUNN EDWARDS<br>BAMBOO COLE (DC #163)       | ◆ PAINT COLOR - DUNN EDWARDS<br>BLACK (DC #147)         |
| ◆ PAINT COLOR - DUNN EDWARDS<br>BLACK BRILLIANT (DC #162)   | ◆ PAINT COLOR - DUNN EDWARDS<br>SAGE (DEC 790)          |
| ◆ PAINT COLOR - DUNN EDWARDS<br>FLIGHTING FEATHER (DC #142) | ◆ PAINT COLOR - DUNN EDWARDS<br>SAGE (DEC 770)          |
| ◆ PAINT COLOR - DUNN EDWARDS<br>BEAVER CLEARING (DC #161)   | ◆ PAINT COLOR - DUNN EDWARDS<br>COURTWOOD BLUE (DC 316) |
| ◆ PAINT COLOR - DUNN EDWARDS<br>SAGE (DC 1045)              | ◆ PAINT COLOR - DUNN EDWARDS<br>SAGE (DEC 770)          |
| ◆ PAINT COLOR - DUNN EDWARDS<br>FRANKIE SONG (CP 3810)      | ◆ PAINT COLOR - DUNN EDWARDS<br>SAGE (DEC 770)          |
| ◆ PAINT COLOR - DUNN EDWARDS<br>BRILEY (DC 3017)            | ◆ PAINT COLOR - DUNN EDWARDS<br>SAGE (DEC 770)          |
| ◆ PAINT COLOR - DUNN EDWARDS<br>FRANKIE SONG (CP 3810)      | ◆ PAINT COLOR - DUNN EDWARDS<br>SAGE (DEC 770)          |
| ◆ PAINT COLOR - DUNN EDWARDS<br>BRILEY (DC 3017)            | ◆ PAINT COLOR - DUNN EDWARDS<br>SAGE (DEC 770)          |

**ADDITIONAL COLOR/FINISHES (BUILDING 1):**

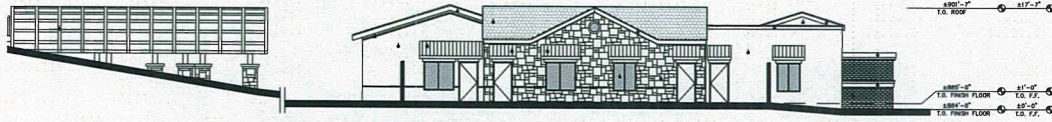
- |  |  |
|--|--|
| ◆ PAINT COLOR - DUNN EDWARDS<br>MOON BLUE (DC 710)     | ◆ TRIM COLOR - OLYMPIC<br>GREY                 |
| ◆ PAINT COLOR - DUNN EDWARDS<br>FRANKIE SONG (CP 3810) | ◆ TRIM COLOR - OLYMPIC<br>NATURAL TONE REDWOOD |
| ◆ PAINT COLOR - DUNN EDWARDS<br>SAGE COFFEE (CP 830)   | ◆ BRICK COLOR - SUNBELLA<br>CANVAS (CP 830)    |
| ◆ PAINT COLOR - DUNN EDWARDS<br>SAGE (DC 1045)         | ◆ BRICK COLOR - SUNBELLA<br>FIRE/SST (CP 830)  |
| ◆ PAINT COLOR - DUNN EDWARDS<br>FRANKIE SONG (CP 3810) | ◆ STONE - OCEAN CORNING<br>BRICKS #12 (C64052) |
| ◆ PAINT COLOR - DUNN EDWARDS<br>BRILEY (DC 3017)       | ◆ STONE - OCEAN CORNING<br>BRICKS #12 (C64052) |
| ◆ PAINT COLOR - DUNN EDWARDS<br>FRANKIE SONG (CP 3810) | ◆ STONE - OCEAN CORNING<br>BRICKS #12 (C64052) |
| ◆ PAINT COLOR - DUNN EDWARDS<br>BRILEY (DC 3017)       | ◆ STONE - OCEAN CORNING<br>BRICKS #12 (C64052) |



**BUILDING 2 - CORNELL ROAD - WEST ELEVATION**

SCALE: 1/8" = 1'-0"

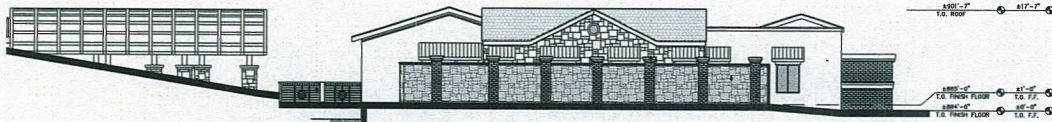
1



**BUILDING 2 - EAST ELEVATION**

SCALE: 1/8" = 1'-0"

2A



**BUILDING 2 - EAST ELEVATION W/ FRONT FENCE WALL**

SCALE: 1/8" = 1'-0"

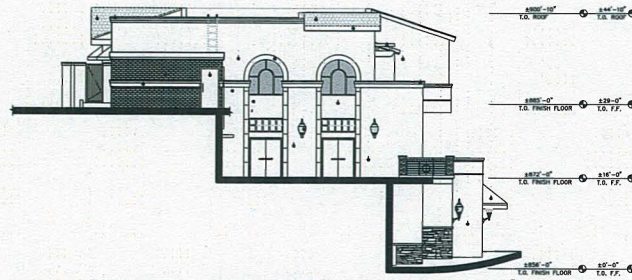
2B



**BUILDING 2 - SOUTH ELEVATION**

SCALE: 1/8" = 1'-0"

3



**BUILDING 2 - NORTH ELEVATION**

SCALE: 1/8" = 1'-0"

4

ELEVATIONS - BUILDING 2

**COLOR/ MATERIAL SCHEDULE**

**KEYNOTES**  
**LEGEND:**  
 - SEE MATERIAL SCHEDULE  
 - SEE COLOR / FINISH SCHEDULE

**MATERIALS:**

◆ CONCRETE TILE ROOF	◆ DOUBLE PANE GLAZING, TEMPERED
◆ STANDING SEAM ROOF	◆ CANVAS AWNING
◆ BUILT UP / SINGLE PLY ROOF	◆ STAINLESS STEEL
◆ ROOF	◆ METAL
◆ PRECAST CONCRETE	◆ METAL WINDOW FRAME
◆ CONCRETE	◆ CONCRETE BLOCK
◆ STUCCO	◆ SIDING BY OTHERS
◆ ALUMINUM STOREFRONT	◆ EXTERIOR LIGHTING
◆ STONE VENEER	◆ SEE LIGHTING SHEETS
◆ BRICK VENEER	◆ WOOD WINDOW FRAME
	◆ HERCULITE DOOR & FRAME

**COLOR/FINISHES (GENERAL):**

◆ PPG - CLEAR GLASS	◆ BRICK VENEER - BRICK CORNING ANTIQUE RED (08-1022)
◆ PPG - SOLARBAN 80 OPTICAL	◆ STONE VENEER - BRICK CORNING ANTIQUE RED (08-1022) (P/WH)
◆ WINDOW FRAME - KAMBER BLACK NO.29	◆ STONE VENEER - BRICK CORNING ANTIQUE RED (08-1022) (P/WH) (S/WH)
◆ WINDOW FRAME - KAMBER STONE BRIDGE NO.29	◆ BRICKING - FLAT ROOFS TYP. WHITE
◆ WINDOW FRAME - KAMBER LIGHT BRIDGE NO.29	◆ ROOFING - STANDING SEAM WEATHERED FINISH
◆ WINDOW - SUNBELLA CANVAS SHASTA BRICK RED	◆ ROOFING - SCALE ROOFING
◆ WINDOW - SUNBELLA FRESHST TERRACOTTA 82014	◆ ROOFING - SCALE ROOFING TERRACOTTA 82014
◆ WINDOW - SUNBELLA FRESHST TERRACOTTA RED 82015	◆ ROOFING - SCALE ROOFING GRAY/BROWN FENCE (1587)
◆ PAINT COLOR - DUNN EDWARDS MODERN IVORY (DC 1187)	◆ CONCRETE - SAND BLASTED
◆ PAINT COLOR - DUNN EDWARDS PRISMO SMOKE (DC 1195)	◆ PAINT COLOR - DUNN EDWARDS 485PER (DCR 340)
◆ PAINT COLOR - DUNN EDWARDS BLACK WALNUT (DC 588.3)	◆ PAINT COLOR - DUNN EDWARDS BLACK (DC 147)
◆ PAINT COLOR - DUNN EDWARDS LEADING FINISH (DC 514.3)	◆ PAINT COLOR - DUNN EDWARDS BONE (DC 745)
◆ PAINT COLOR - DUNN EDWARDS WEATHER LEATHER (DC 516)	◆ PAINT COLOR - DUNN EDWARDS SPINNING (DC 770)
	◆ PAINT COLOR - DUNN EDWARDS COURTYARD BLUE (DC 3108)

**ORDER TO APPROVE ALL SELECTED MATERIALS, COLORS, AND FINISHES PRIOR TO INSTALLATION. SUBSTITUTION OF ALL FINISHES MUST BE APPROVED EQUAL.**

**ADDITIONAL COLOR/FINISHES (BUILDING 2):**

◆ PAINT COLOR - DUNN EDWARDS LUSTER WHITE (DC 3141)	◆ AWNING COLOR - SUNBELLA RECTETA TRIST (0800)
◆ PAINT COLOR - DUNN EDWARDS TURFIDE (DC 3143)	◆ STONE - BRICK CORNING YOCUMITE BRICK WASH (C319-3088)
◆ PAINT COLOR - DUNN EDWARDS ELECTRIC NAVY (DC 3153)	◆ STONE - BRICK CORNING BRICK WASH (C319-3087)
◆ PAINT COLOR - DUNN EDWARDS EXPRESS	◆ STONE - BRICK CORNING OLD COUNTRY CORNFIELD (C319-3087)

**REVISIONS**


**DRAWING INFO**  
 DESIGNED FILE  
 11/21/2013  
 SCALE  
 JOB NO.  
 1088

These drawings are the property of Heathcote & Associates. All items and materials are to be used in accordance with the specifications and standards of the American Institute of Architects. It is the responsibility of the contractor to verify the accuracy of the information provided in these drawings. The contractor shall be responsible for obtaining all necessary permits and approvals. The contractor shall be responsible for the accuracy of the information provided in these drawings. The contractor shall be responsible for the accuracy of the information provided in these drawings. The contractor shall be responsible for the accuracy of the information provided in these drawings.

Copyright Heathcote & Associates  
 10/18/2013

CORNERSTONE

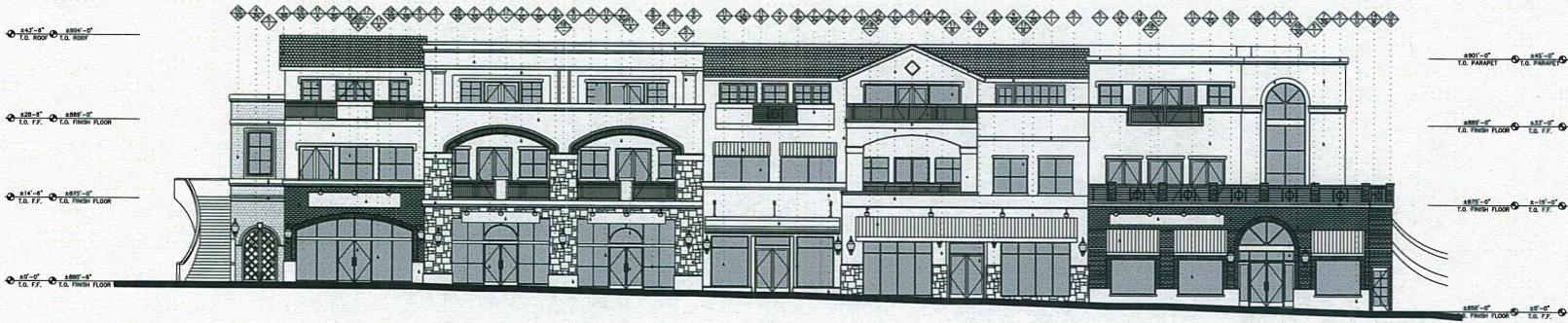
ACQUA HILLS, CALIFORNIA

ACTURA ROAD

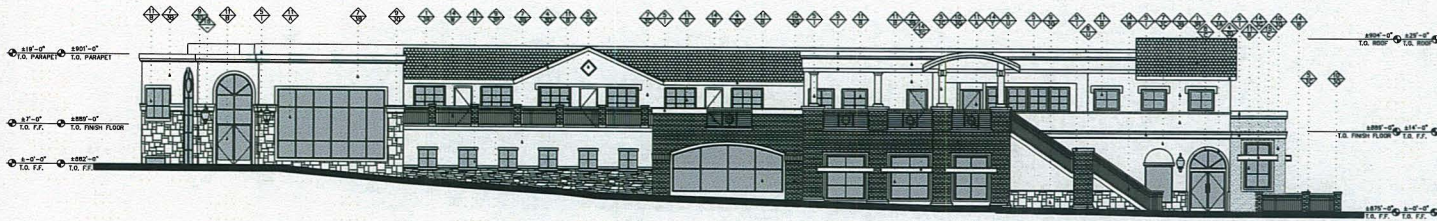


**Heathcote & Associates**  
 Architecture  
 3396 Willow Lane  
 Westlake Village  
 California Suite 200  
 Phone 805-497-4700

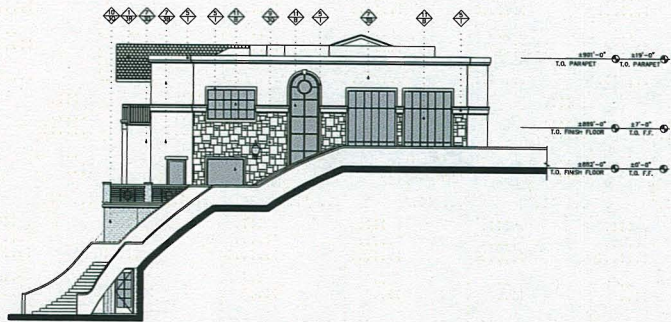
**Sheet**  
 A4.2  
 ELEVATIONS



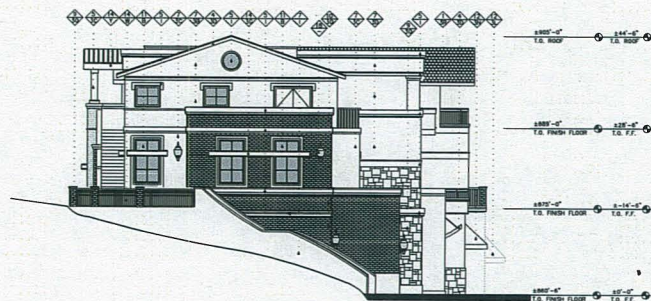
**BUILDING 3 - AGOURA ROAD - NORTH ELEVATION ①**  
SCALE: 1/8" = 1'-0"



**BUILDING 3 - SOUTH ELEVATION ②**  
SCALE: 1/8" = 1'-0"



**BUILDING 3 - WEST ELEVATION ③**  
SCALE: 1/8" = 1'-0"



**BUILDING 3 - EAST ELEVATION ④**  
SCALE: 1/8" = 1'-0"

**COLOR MATERIAL SCHEDULE**

**KEYNOTES LEGEND:**  
 ◆ SEE MATERIAL SCHEDULE  
 ◆ SEE COLOR / FINISH SCHEDULE

**MATERIALS:**

◆ CONCRETE TILE ROOF	◆ DOUBLE PANE GLAZING, IMPROVED
◆ STANDING SEAM ROOF	◆ CANVAS AWNING
◆ BUILT UP / SINGLE PLY ROOF	◆ STAINLESS STEEL
◆ WOOD	◆ METAL
◆ PRECAST CONCRETE	◆ METAL WINDOW FRAME
◆ CONCRETE	◆ CONCRETE BLOCK
◆ STUCCO	◆ SIGNAGE BY OTHERS
◆ ALUMINUM STOREFRONT	◆ EXTERIOR LIGHTING SEE LIGHTING SHEETS
◆ STONE VENEER	◆ WOOD WINDOW FRAME
◆ BRICK VENEER	◆ HERCULET DOOR & FRAME

**COLOR/FINISHES (GENERAL):**

◆ PFD - CLEAR GLASS	◆ BRICK VENEER - BRICK CORNING ANSI/BSI RED (20-002)
◆ PFD - SOLARIUM 80 OP/BLEND	◆ STONE VENEER - BRICK CORNING BLUISH WHITE (EXTERIOR BY OTHERS) CAL SWISS STONE 8001
◆ WINDOW FRAME - HARNBER BLACK 90.28	◆ STONE VENEER - BRICK CORNING RUSTIC BRICK 2, WHITE 2001 RUSTIC BRICK 2, WHITE 2001
◆ WINDOW FRAME - HARNBER MEDIUM BRONZE 90.28	◆ ROOFING - FLAT ROOF'S TYP. 811E
◆ WINDOW FRAME - HARNBER LIGHT BRONZE 90.28	◆ ROOFING - STANDARD SEAM WEATHERED FINISH
◆ AWNING - SANIBELLA CANVAS BEASTY ROSE 8202	◆ ROOFING - GABLE ROOFING SEA BOARD ROMANISHA BLEND (LHC 4700)
◆ AWNING - SANIBELLA PRECST1 TERRACOTTA 8204	◆ ROOFING - GABLE ROOFING DOUBLE GABLE BLEND GRAY/BRUSH HANG (3887)
◆ AWNING - SANIBELLA PRECST7	◆ CONCRETE - SAND BLASTED
◆ AWNING - AMBITION RED (8207)	
◆ PAINT COLOR - DUNN EDWARDS MODERN IVORY (DE 5187)	◆ PAINT COLOR - DUNN EDWARDS BANDER (DEW 340)
◆ PAINT COLOR - DUNN EDWARDS BRANDY SCREEN (DE 4143)	◆ PAINT COLOR - DUNN EDWARDS BLACK SEA 817
◆ PAINT COLOR - DUNN EDWARDS BLACK WALNUT (DE 8083)	◆ PAINT COLOR - DUNN EDWARDS BONE (DEW 783)
◆ PAINT COLOR - DUNN EDWARDS FLAUNTING PEARL (DE 4143)	◆ PAINT COLOR - DUNN EDWARDS SMITHING (DEW 770)
◆ PAINT COLOR - DUNN EDWARDS WEATHER LEATHER (DE 6105)	◆ PAINT COLOR - DUNN EDWARDS COURTYARD BLUE (DE 3108)

**ADDITIONAL COLOR/FINISHES (BUILDING 3):**

◆ PAINT COLOR - DUNN EDWARDS BUNGALOW (DE 4172)	◆ TRIM COLOR - OLYMPIC ESPRESSO
◆ PAINT COLOR - DUNN EDWARDS ROCK PASSAGE (DE 794)	◆ TRIM COLOR - OLYMPIC SILVER LINEN OR BRUSH P.F.B.
◆ PAINT COLOR - DUNN EDWARDS CLEAN OF WHITE (DE 1876)	◆ AWNING COLOR - SANIBELLA PRECST - FOREST GREEN (82003)
◆ PAINT COLOR - DUNN EDWARDS GRAY (DE 5214)	◆ AWNING COLOR - SANIBELLA PRECST - IVORY (82001)
◆ PAINT COLOR - DUNN EDWARDS CROWN LURAL (DE 949)	◆ AWNING COLOR - SANIBELLA PRECST - TERRACOTTA (8204)
◆ PAINT COLOR - DUNN EDWARDS PAPE RAY (DE 3983)	◆ STONE - BRICK CORNING CUMBERLAND OLD CHERRY (C01-3000)
◆ PAINT COLOR - DUNN EDWARDS SHEWANIAN ROSE (DE 784)	◆ STONE - BRICK CORNING LANEVIEW WOOD ROCK (C01-2004)
◆ PAINT COLOR - DUNN EDWARDS BRANDINE (DE 3003)	◆ STONE - BRICK CORNING CHICKADEE (C01-1004)
◆ PAINT COLOR - DUNN EDWARDS LILLY PAD (DE 3176)	◆ CONCRETE TILE ROOFING EAGLE ROOFING HONEYEY (EXP080)

REVISIONS

DRAWING INFO
COMPILED FILE
DATE
11/27/2013
SCALE
ASB 100

Client: [Redacted]  
 Project: [Redacted]  
 Location: [Redacted]  
 Date: 11/27/2013  
 Scale: ASB 100  
 Copyright © 2013 Cornerstone Architecture & Associates  
 All Rights Reserved

CORNERSTONE  
AGOURA HILLS, CALIFORNIA  
AGOURA ROAD



**Heathcote & Associates**  
 Architecture  
 3396 Willow Lane  
 Westlake Village  
 California Suite 200  
 Phone 805-497-4700

SHEET
A4.3
ELEVATIONS

**COLOR/MATERIAL SCHEDULE**

**KEYNOTES**  
**LEGEND:**  
 - SEE MATERIAL SCHEDULE  
 - SEE COLOR / FINISH SCHEDULE

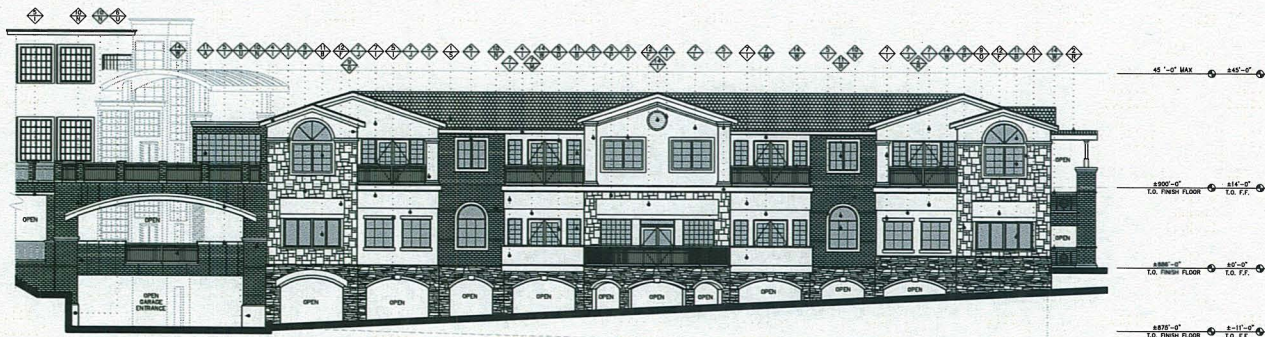
**MATERIALS:**

◇ CONCRETE TILE ROOF	◇ DOUBLE PANE GLAZING, THERMO
◇ STANDING SEAM ROOF	◇ CANVAS AWNING
◇ BUILT UP / SINGLE PLY ROOF	◇ STAINLESS STEEL
◇ WOOD	◇ METAL
◇ PRECAST CONCRETE	◇ METAL WINDOW FRAME
◇ CONCRETE	◇ CONCRETE BLOCK
◇ STUCCO	◇ SIGNAGE BY OTHERS
◇ ALUMINUM STOREFRONT	◇ EXTERIOR LIGHTING SEE LIGHTING SCHEDULE
◇ STONE VENEER	◇ WOOD WINDOW FRAME
◇ BRICK VENEER	◇ HINGED/OUTE DOOR & FRAME

**COLOR/FINISHES (GENERAL):**

◇ PPG - CLEAR GLASS	◇ BRICK VENEER - CHENS CORNING ANTIQUE RED (CB-6502)
◇ PPG - SOLARBAN 80 SP-1816L	◇ STONE VENEER - CHENS CORNING MOUNTAIN RIDGE (CB-6504)
◇ WINDOW FRAME - KAMBER BLACK NO.29	◇ STONE VENEER - CHENS CORNING MOUNTAIN RIDGE (CB-6504)
◇ WINDOW FRAME - KAMBER WINDOW BRIDGE NO.29	◇ ROOFING - FLAT ROOFS TYP. WHITE
◇ WINDOW FRAME - KAMBER LIGHT BRIDGE NO.26	◇ ROOFING - STANDING SEAM WEATHERED FINISH
◇ AWNING - SUNBELLA CANVAS TRASTY BONE 5002	◇ ROOFING - SHALE ROOFING BENNINGTON BLEND (LAE 9700)
◇ AWNING - SUNBELLA FIRESTON TERRACOTTA 8004	◇ ROOFING - SHALE ROOFING DOUBLE SHALE BLEND (LAE 9700)
◇ AWNING - SUNBELLA FIRESTON CHERRY RED 8007	◇ CONCRETE - SAND BLENDED
◇ PAINT COLOR - DUNN EDWARDS MODERN FORT (DE 6187)	◇ PAINT COLOR - DUNN EDWARDS BROKER (DE 240)
◇ PAINT COLOR - DUNN EDWARDS BARBDO SCHEM (DE 4193)	◇ PAINT COLOR - DUNN EDWARDS BLACK (DE 187)
◇ PAINT COLOR DUNN EDWARDS BLACK WALNUT (DE 6063)	◇ PAINT COLOR - DUNN EDWARDS SOAK (DE 305)
◇ PAINT COLOR DUNN EDWARDS PLUMBING FEATHER (DE 6142)	◇ PAINT COLOR - DUNN EDWARDS DUSTING (DE 770)
◇ PAINT COLOR - DUNN EDWARDS WEATHER LEATHER (DE 6103)	◇ PAINT COLOR - DUNN EDWARDS COURTYARD BLUE (DE 3106)

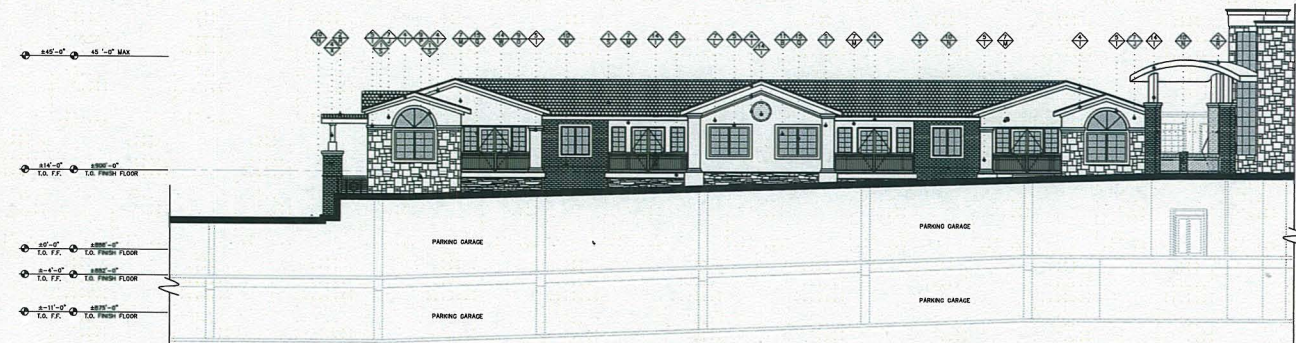
**OTHER:** TO APPROVE ALL SELECTED MATERIALS, COLORS AND FINISHES PRIOR TO INSTALLATION. SUGGESTION OF ALL FINISHES MUST BE APPROVED EQUAL.



**BUILDING 4A - NORTH ELEVATION**

SCALE: 1/8" = 1'-0"

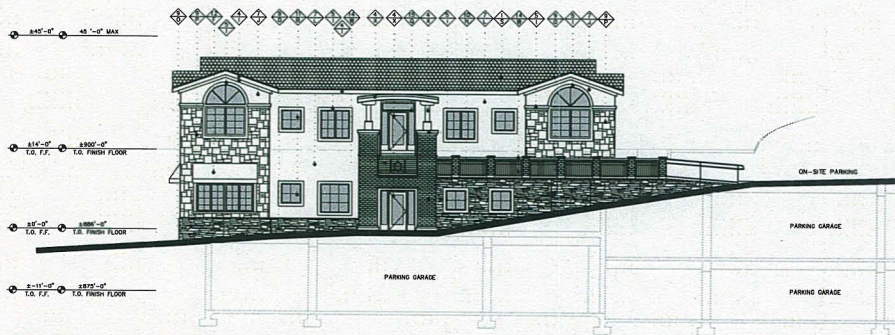
1



**BUILDING 4A - SOUTH ELEVATION**

SCALE: 1/8" = 1'-0"

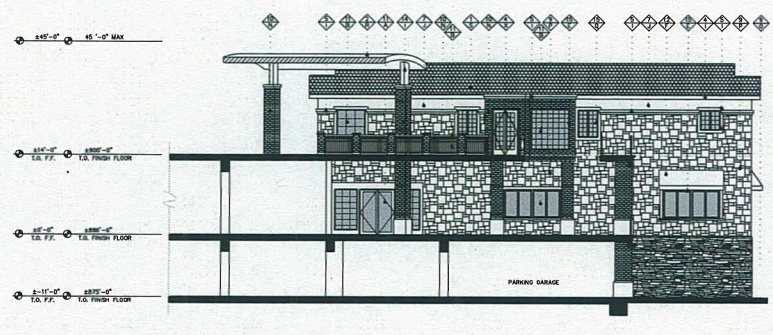
2



**BUILDING 4A - WEST ELEVATION**

SCALE: 1/8" = 1'-0"

3



**BUILDING 4A - EAST ELEVATION**

SCALE: 1/8" = 1'-0"

4

**ELEVATIONS - BUILDING 4A**

**REVISIONS**


**DRAWING INFO**  
 COMPUTER FILE  
 DATE  
 11/22/2013  
 SCALE  
 JOB NO.  
 1586

These drawings are a set of contract documents and are the property of Heathcote & Associates, LLC. No part of these drawings may be reproduced, stored in a retrieval system, or transmitted in any form or by any means, electronic, mechanical, photocopying, recording, or by any information storage and retrieval system, without the prior written permission of Heathcote & Associates, LLC. The user of these drawings shall be deemed to have accepted the terms and conditions of the contract documents and to be bound by the terms and conditions of the contract documents. Heathcote & Associates, LLC is not responsible for any errors or omissions in these drawings. The user shall be responsible for verifying the accuracy of the information provided in these drawings. Heathcote & Associates, LLC is not responsible for any damages, including consequential damages, arising from the use of these drawings. Heathcote & Associates, LLC is not responsible for any changes or modifications to these drawings. Heathcote & Associates, LLC is not responsible for any delays or interruptions in the construction process. Heathcote & Associates, LLC is not responsible for any safety or health issues arising from the use of these drawings. Heathcote & Associates, LLC is not responsible for any environmental issues arising from the use of these drawings. Heathcote & Associates, LLC is not responsible for any other issues arising from the use of these drawings.

Copyright: Heathcote & Associates  
 10/18/2013

CORNERSTONE  
 15000 S. HILL ST., SUITE 100  
 WESTLAKE, CALIFORNIA 91361  
 PHONE: 805-497-4700  
 FAX: 805-497-4701  
 WWW.CORNERSTONEARCHITECTS.COM



**Heathcote & Associates**

Architecture  
 3396 Willow Lane  
 Westlake Village  
 California Suite 200  
 Phone 805-497-4700

**SHEET**

**A4.4**

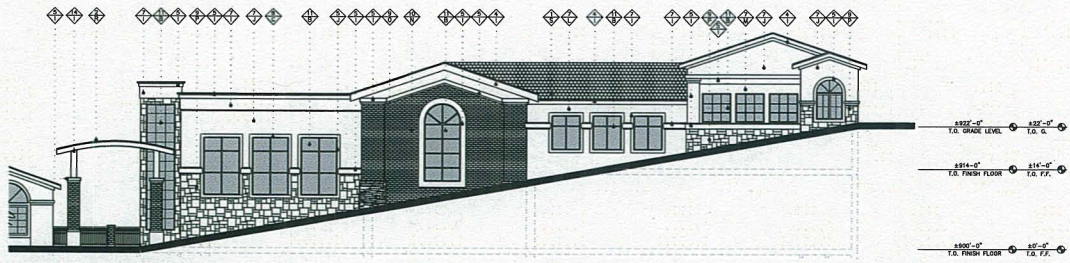
**ELEVATIONS**

COLOR/MATERIAL SCHEDULE	
<b>KEYNOTES</b>	
<b>LEGEND:</b>	
SEE MATERIAL SCHEDULE	
SEE COLOR / FINISH SCHEDULE	
<b>MATERIALS:</b>	
CONCRETE TILE ROOF	DOUBLE PANE GLAZING
STANDING SEAM ROOF	CANVAS SIDING
BUILT UP / SINGLE PLY ROOF	STAINLESS STEEL
WOOD	METAL
PRECAST CONCRETE	METAL WINDOW FRAME
CONCRETE	CONCRETE BLOCK
STUCCO	SIDING BY OTHERS
ALUMINUM STOREFRONT	EXTERIOR LIGHTING SEE LIGHTING SHEETS
STONE VENEER	WOOD WINDOW FRAME
BRICK VENEER	VERGILITE DOOR & FRAME
<b>COLOR/FINISHES (GENERAL):</b>	
PPG - CLEAR GLASS	BRICK VENEER - OREGON CORNING PANTONE RED (20-4022)
PPG - GREEN HS GLASS	STONE VENEER - OREGON CORNING BLENDED STONE (20-4022)
WINDOW FRAME - KAMDEX BLACK NO.23	ROOFING - EAGLE ROOFING DUALCORE (20-4022)
WINDOW FRAME - KAMDEX MIDNIGHT BRN NO.28	ROOFING - EAGLE ROOFING DUALCORE (20-4022)
WINDOW FRAME - KAMDEX LIGHT BRN NO.28	ROOFING - STANDING SEAM BRANDERUN TRUSS
BRICK - SUBMITELLA CANVAS FOASTY BRICK 8022	ROOFING - EAGLE ROOFING SEA BOARD DUALCORE BLEND (LHC 9700)
BRICK - SUBMITELLA FREESIT TOMCATO 8204	ROOFING - EAGLE ROOFING DUALCORE BLEND (LHC 9700)
BRICK - SUBMITELLA FREESIT CRUSON RED (8207)	CONCRETE - SAND BLASTED
PANT COLOR - DUNN EDWARDS MOONR IVORY (DC 4197)	PANT COLOR - DUNN EDWARDS WHISPER (DCV 340)
PANT COLOR - DUNN EDWARDS RANSOM GREEN (DC 8135)	PANT COLOR - DUNN EDWARDS BLACK (DCV 340)
PANT COLOR - DUNN EDWARDS BLACK WALNUT (DC 8045)	PANT COLOR - DUNN EDWARDS BONE (DCV 785)
PANT COLOR - DUNN EDWARDS SLANTING FEATHER (DC 4142)	PANT COLOR - DUNN EDWARDS SPRING (DCV 370)
PANT COLOR - DUNN EDWARDS BEACH LEATHER (DC 8100)	PANT COLOR - DUNN EDWARDS COURTSHIP BLUE (DC 3188)
ORDER TO APPROVE ALL SPECIES MATERIAL, QUANTITY AND FINISHES PRIOR TO INSTALLATION. SUBSTITUTION OF ALL FINISHES MUST BE APPROVED EQUAL.	



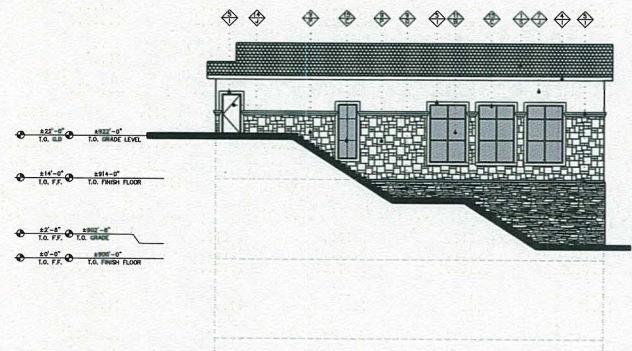
**BUILDING 4B - NORTH ELEVATION**

1



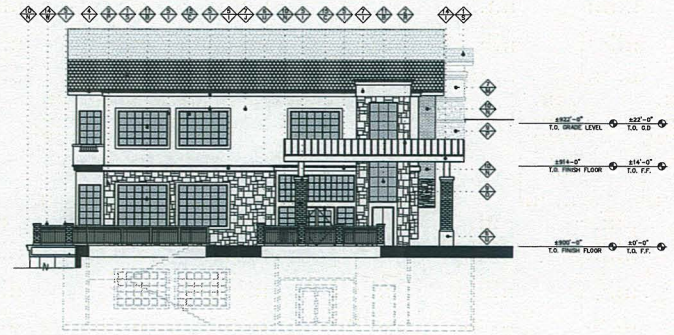
**BUILDING 4B - SOUTH ELEVATION**

2



**BUILDING 4B - EAST ELEVATION**

3



**BUILDING 4B - WEST ELEVATION**

4

**COLOR/MATERIAL SCHEDULE**

**KEYNOTES**

- LEGEND:**  
 ◆ SEE MATERIAL SCHEDULE  
 ◆ SEE COLOR / FINISH SCHEDULE

**MATERIALS:**

- |                              |  |
|------------------------------|--|
| ◆ CONCRETE TILE ROOF         | ◆ DOUBLE PANE GLAZING, TEMPERED        |
| ◆ STANDING SEAM ROOF         | ◆ CANVAS ARMING                        |
| ◆ BUILT UP / SINGLE PLY ROOF | ◆ STAINLESS STEEL                      |
| ◆ WOOD                       | ◆ METAL                                |
| ◆ PRECAST CONCRETE           | ◆ METAL WINDOW FRAME                   |
| ◆ CONCRETE                   | ◆ CONCRETE BLOCK                       |
| ◆ STUCCO                     | ◆ STORAGE BY OTHERS                    |
| ◆ ALUMINUM STOREFRONT        | ◆ WINDOW LIFTING<br>SEE LIFTING SHEETS |
| ◆ STONE VENEER               | ◆ WOOD WINDOW FRAME                    |
| ◆ BRICK VENEER               | ◆ HORIZONTAL DOOR & FRAME              |

**COLOR/FINISHES (GENERAL):**

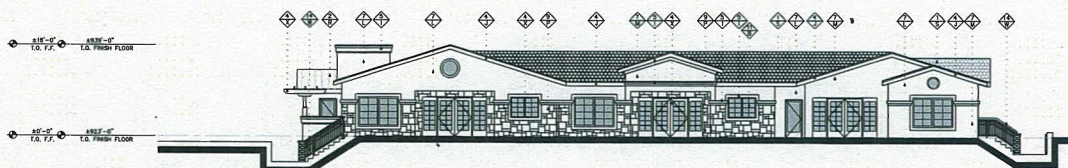
- |   |   |
|---|---|
| ◆ PPO - CLEAR GLASS                                       | ◆ BRICK VENEER - MEDIUM CORNING<br>ANTIQUE RED (CB-8822)                                  |
| ◆ PPO - SOLARBAN 80<br>OPTICAL                            | ◆ STONE VENEER - MEDIUM CORNING<br>BLANK POINT (SEESENGER SPK44)<br>COLORS: STONE SHIP 01 |
| ◆ WINDOW FRAME - KAMRICK<br>BLACK NO.29                   | ◆ STONE VENEER - MEDIUM CORNING<br>BLANK POINT (SEESENGER SPK44)<br>COLORS: STONE SHIP 01 |
| ◆ WINDOW FRAME - KAMRICK<br>MEDIUM BRONZE NO.28           | ◆ ROOFING - FLAT ROOFS TYP.<br>WHITE  |
| ◆ WINDOW FRAME - KAMRICK<br>LIGHT BRONZE NO.26            | ◆ ROOFING - STANDING SEAM<br>WEATHERED FINISH   |
| ◆ ARMING - SUNBELLA CANVAS<br>TOASTY BEIGE 8282           | ◆ ROOFING - GABLE ROOFING<br>2X4 BOARD<br>DOMINATION BLEND (SHE. 9730)                    |
| ◆ ARMING - SUNBELLA FIREWHT<br>TONGUITA 8284              | ◆ TRIMING - GABLE ROOFING<br>SHIMULE CABLE ISLAND<br>GRAY (BROWN VENEER CM21)             |
| ◆ ARMING - SUNBELLA FIREWHT<br>DIMENSION RED (82977)      | ◆ CONCRETE - SAND BLASTED   |
| ◆ PAINT COLOR - DUNN EDWARDS<br>WOODEN PORT (DC 6187)     | ◆ PAINT COLOR - DUNN EDWARDS<br>MIDWINTER SOOT (DC 340)                                   |
| ◆ PAINT COLOR - DUNN EDWARDS<br>BAMBOO SCREEN (DC 6193)   | ◆ PAINT COLOR - DUNN EDWARDS<br>BLACK (DC 187)  |
| ◆ PAINT COLOR DUNN EDWARDS<br>BLACK BRASS (DC 1943)       | ◆ PAINT COLOR - DUNN EDWARDS<br>PINE (DC 760)   |
| ◆ PAINT COLOR DUNN EDWARDS<br>FLOATING FEATHER (DC 6142)  | ◆ PAINT COLOR - DUNN EDWARDS<br>SHIFFING (DC 770)   |
| ◆ PAINT COLOR - DUNN EDWARDS<br>WEATHER LEATHER (DC 6163) | ◆ PAINT COLOR - DUNN EDWARDS<br>COURTNEY BLUE (DC 3988)                                   |
- ORDER TO APPROVE ALL SELECTED MATERIALS, COLORS, AND FINISHES  
 PRIOR TO INSTALLATION. SUBSTITUTION OF ALL FINISHES MUST BE APPROVED EQUAL.



**BUILDING 5 - NORTH ELEVATION**

SCALE: 1/8" = 1'-0"

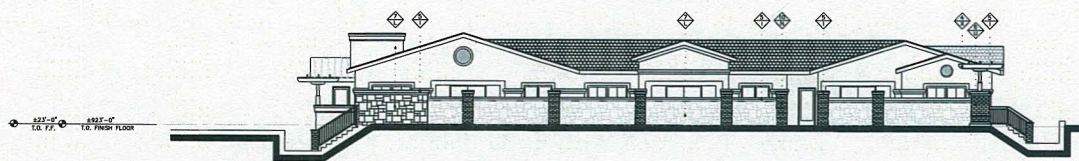
1



**BUILDING 5 - SOUTH ELEVATION**

SCALE: 1/8" = 1'-0"

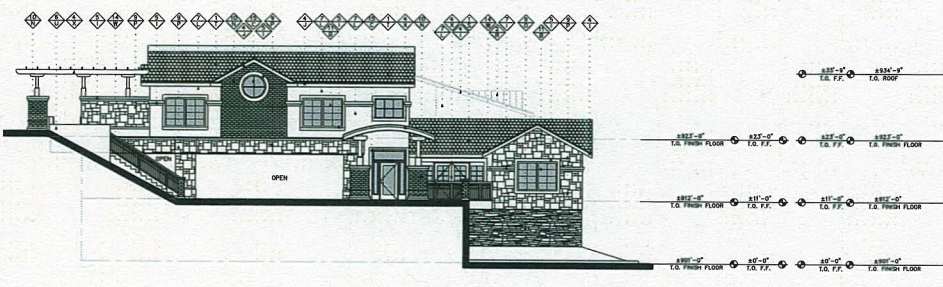
2A



**BUILDING 5 - SOUTH ELEVATION W/ FRONT FENCE WALL**

SCALE: 1/8" = 1'-0"

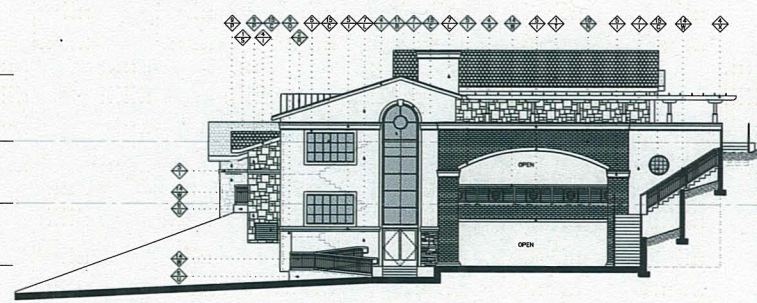
2B



**BUILDING 5 - EAST ELEVATION**

SCALE: 1/8" = 1'-0"

3



**BUILDING 5 - WEST ELEVATION**

SCALE: 1/8" = 1'-0"

4

REVISIONS

DRAWING INFO
COMPUTER FILE
DATE
11/25/2013
SCALE
JOB NO.
1008

These drawings are to be used only as a guide and are not to be used for construction. All dimensions are to be taken from the finished work. The contractor is responsible for obtaining all necessary permits and approvals. The contractor is responsible for obtaining all necessary permits and approvals. The contractor is responsible for obtaining all necessary permits and approvals.

1/4" Scale - 1/8" = 1'-0"

CORNERSTONE  
 ARCHITECTS, INC.  
 1000 W. HILL ST., SUITE 200  
 AGORA, ILL. 60401



**Heathcote & Associates**

Architecture  
 3396 Willow Lane  
 Westlake Village  
 California Suite 200  
 Phone 805-497-4700

SHEET
A4.6
ELEVATIONS

**COLOR/MATERIAL SCHEDULE**

**KEYNOTES**

LEGEND:  
 ◆ SEE MATERIAL SCHEDULE  
 ◆ SEE COLOR / FINISH SCHEDULE

**MATERIALS:**

- |                              |  |
|------------------------------|--|
| ◆ CONCRETE TILE ROOF         | ◆ SOULTE FRAME GLAZING, TEMPLERD         |
| ◆ STANDING SEAM ROOF         | ◆ CANVAS AWNING                          |
| ◆ BUILT UP / SINGLE PLY ROOF | ◆ STAINLESS STEEL                        |
| ◆ WOOD                       | ◆ METAL                                  |
| ◆ PRECAST CONCRETE           | ◆ METAL WINDOW FRAME                     |
| ◆ CONCRETE                   | ◆ CONCRETE BLOCK                         |
| ◆ STUCCO                     | ◆ BORNAZE BY OTHERS                      |
| ◆ ALUMINUM STOREFRONT        | ◆ EXTERIOR LIGHTING, SEE LIGHTING SHEETS |
| ◆ STONE VENEER               | ◆ WOOD WINDOW FRAME                      |
| ◆ BRICK VENEER               | ◆ MERCURITE DOOR & FRAME                 |

**COLOR/FINISHES (GENERAL):**

- |  |   |
|--|---|
| ◆ PPG - CLEAR GLASS  | ◆ BRICK VENEER - OWENS CORNING<br>ANTIQUE RED (CP-1002)                                   |
| ◆ PPG - SOLARBAN 80<br>OPTISILC                            | ◆ STONE VENEER - OWENS CORNING<br>SILVER POINT (ST-1004) (PFB04)<br>BLAZING BRICK (ST-01) |
| ◆ WINDOW FRAME - KAWNEER<br>BLACK NO.29                    | ◆ STONE VENEER - OWENS CORNING<br>SILVER POINT (ST-1004) (PFB04)<br>BLAZING BRICK (ST-01) |
| ◆ WINDOW FRAME - KAWNEER<br>MEDIUM BRONZE NO.28            | ◆ ROOFING - FLAT ROOFS TYP.<br>WHITE  |
| ◆ WINDOW FRAME - KAWNEER<br>LIGHT BRONZE NO.28             | ◆ ROOFING - STANDING SEAM<br>REARNAILED FEET  |
| ◆ AWNING - SANBELLIA CANVAS<br>SHASTY BLUE NO.28           | ◆ ROOFING - EAGLE ROOFING<br>EXHIBITION BLUE (JUL-9100)                                   |
| ◆ AWNING - SANBELLIA PARCHET<br>TERRACOTTA 82014           | ◆ ROOFING - EAGLE ROOFING<br>TERRACOTTA 82014   |
| ◆ AWNING - SANBELLIA PARCHET<br>CHAMPION RED 82017         | ◆ CONCRETE - SAND BLASTED   |
| ◆ PAINT COLOR - DUANE EDWARDS<br>MODERN HONEY (DC 8197)    | ◆ PAINT COLOR - DUANE EDWARDS<br>MUSKIEP (DEW 340)  |
| ◆ PAINT COLOR - DUANE EDWARDS<br>SANDS GREEN (DC 9183)     | ◆ PAINT COLOR - DUANE EDWARDS<br>BLACK (DC 9177)  |
| ◆ PAINT COLOR - DUANE EDWARDS<br>BLACK WALNUT (DC 6083)    | ◆ PAINT COLOR - DUANE EDWARDS<br>BINE (DEC 785)   |
| ◆ PAINT COLOR - DUANE EDWARDS<br>FLORIAN TEACHER (DC 8141) | ◆ PAINT COLOR - DUANE EDWARDS<br>PENTON (DEC 770)   |
| ◆ PAINT COLOR - DUANE EDWARDS<br>WEAVER LEATHER (DC 8103)  | ◆ PAINT COLOR - DUANE EDWARDS<br>COURTYARD BLUE (DC 3108)                                 |

REFER TO SPECIFICATIONS FOR ALL MATERIALS. VERIFY ALL FINISHES AND COLORS PRIOR TO INSTALLATION. SUBSTITUTION OF ALL FINISHES MUST BE APPROVED EQUAL.



**BUILDING 6 - NORTH ELEVATION**

SCALE: 1/8" = 1'-0"

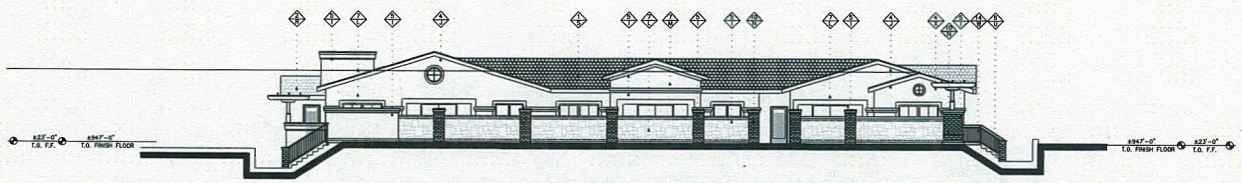
1



**BUILDING 6 - SOUTH ELEVATION**

SCALE: 1/8" = 1'-0"

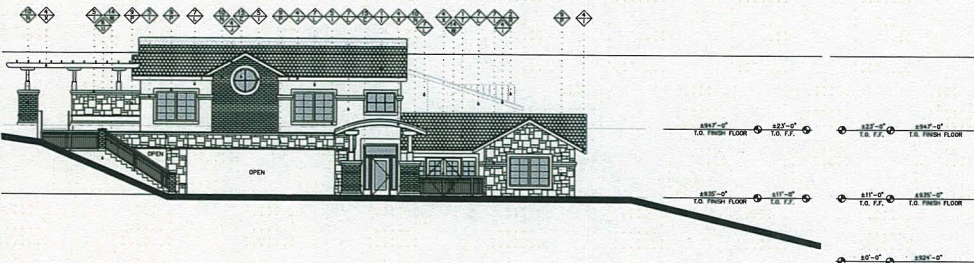
2A



**BUILDING 6 - SOUTH ELEVATION W/ FRONT FENCE WALL**

SCALE: 1/8" = 1'-0"

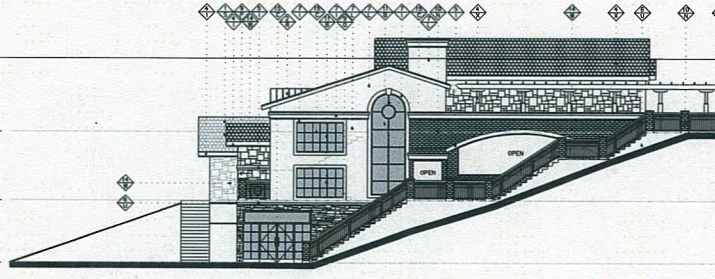
2B



**BUILDING 6 - EAST ELEVATION**

SCALE: 1/8" = 1'-0"

3



**BUILDING 6 - WEST ELEVATION**

SCALE: 1/8" = 1'-0"

4

REVISIONS

DRAWING INFO
COMPUTER FILE
DATE
11/22/2013
SCALE
JOB NO.
088

These drawings were prepared and/or checked by the architect and are not to be used for construction without the approval of the architect. The architect is not responsible for any errors or omissions in these drawings. The architect is not responsible for any construction methods or materials not shown in these drawings. The architect is not responsible for any construction methods or materials not shown in these drawings. The architect is not responsible for any construction methods or materials not shown in these drawings.

Copyright: Cornerstone & Associates, 2013. All Rights Reserved.

CORNERSTONE  
 AUGUSTA ROAD

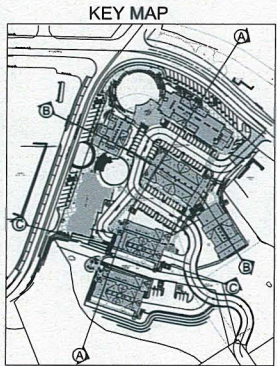
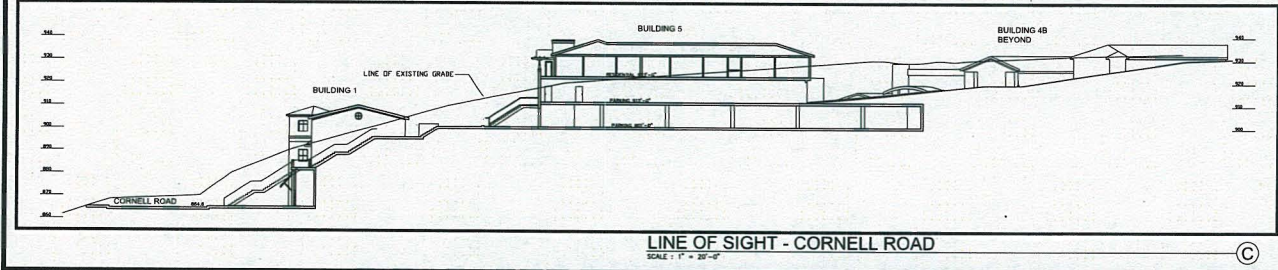
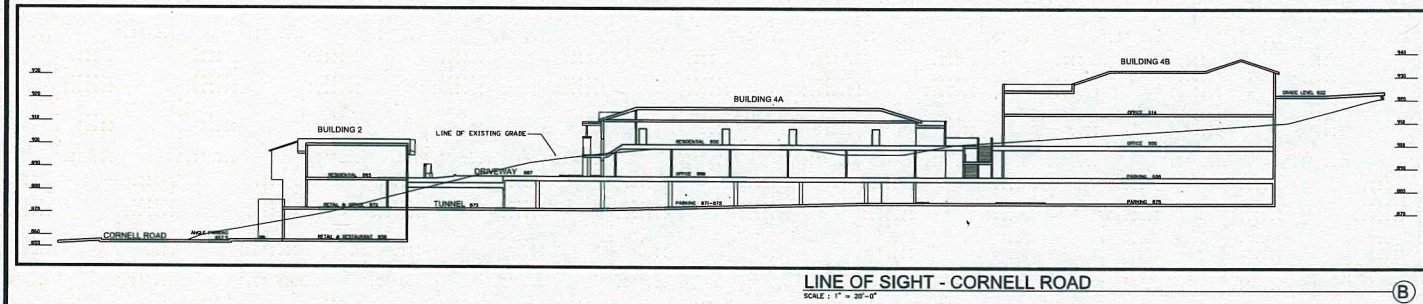
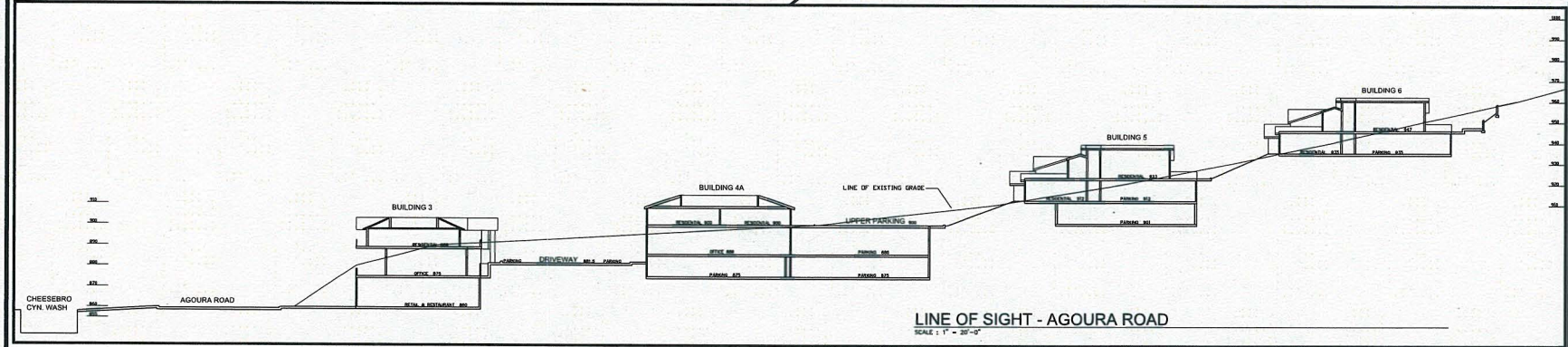
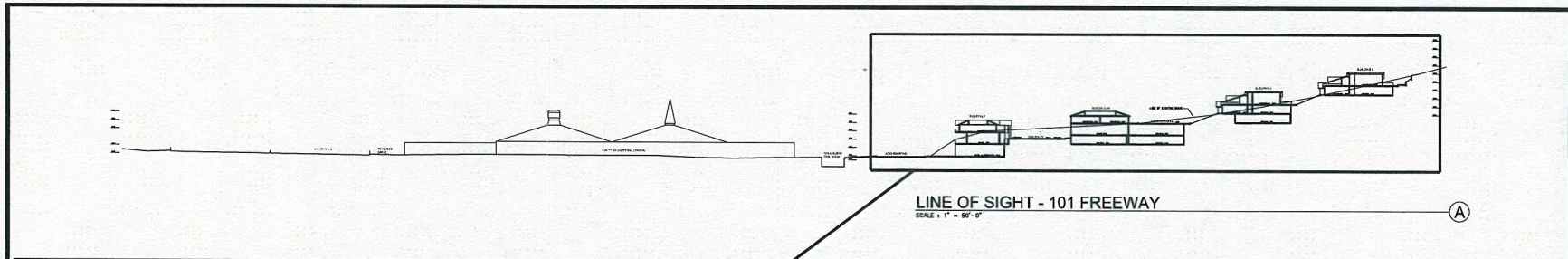


**Heathcote & Associates**

Architecture  
 3396 Willow Lane  
 Westlake Village  
 California Suite 200  
 Phone 805-497-4700

SHEET
A4.7
ELEVATIONS





REVISIONS

DRAWING INFO
COMPUTER FILE
DATE 11/25/2013
SCALE
JOB NO. 1088

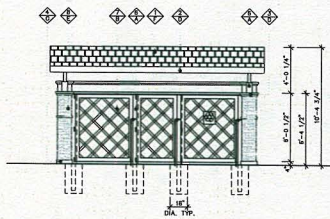
These drawings are made of copies and are the property of Heathcote & Associates. All copies are to be made from the original drawings. No part of these drawings may be reproduced or transmitted in any form or by any means, electronic, mechanical, photocopying, recording, or by any information storage and retrieval system, without the prior written permission of Heathcote & Associates. The user of these drawings shall be responsible for obtaining all necessary permits and approvals from the appropriate authorities. The user shall be responsible for obtaining all necessary permits and approvals from the appropriate authorities. The user shall be responsible for obtaining all necessary permits and approvals from the appropriate authorities.

CORNERSTONE  
 AGOURA ROAD  
 AGOURA HILLS, CALIFORNIA

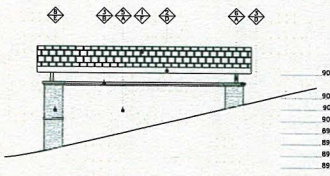


**Architecture**  
 3396 Willow Lane  
 Westlake Village  
 California Suite 200  
 Phone 805-497-4700

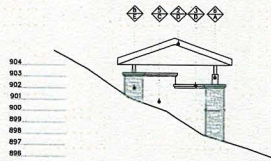
SHEET  
**A5.0**  
 SITE SECTION



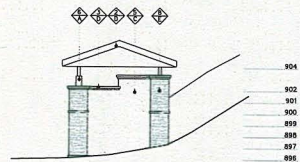
NORTH ELEVATION - TRASH ENCLOSURE #3  
SCALE: 1/4" = 1'-0"



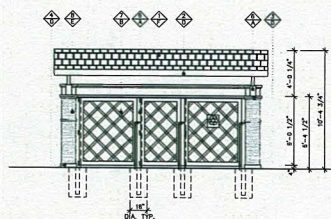
SOUTH ELEVATION - TRASH ENCLOSURE #3  
SCALE: 1/4" = 1'-0"



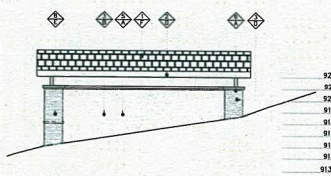
EAST ELEVATION - TRASH ENCLOSURE #3  
SCALE: 1/4" = 1'-0"



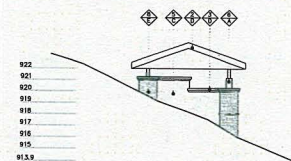
WEST ELEVATION - TRASH ENCLOSURE #3  
SCALE: 1/4" = 1'-0"



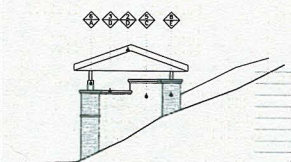
NORTH ELEVATION - TRASH ENCLOSURE #2  
SCALE: 1/4" = 1'-0"



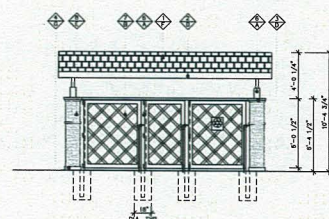
SOUTH ELEVATION - TRASH ENCLOSURE #2  
SCALE: 1/4" = 1'-0"



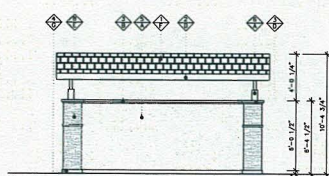
EAST ELEVATION - TRASH ENCLOSURE #2  
SCALE: 1/4" = 1'-0"



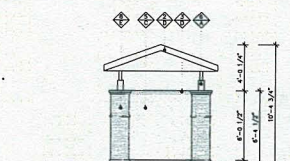
WEST ELEVATION - TRASH ENCLOSURE #2  
SCALE: 1/4" = 1'-0"



NORTH ELEVATION - TRASH ENCLOSURE #1  
SCALE: 1/4" = 1'-0"



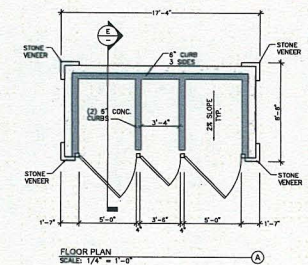
SOUTH ELEVATION - TRASH ENCLOSURE #1  
SCALE: 1/4" = 1'-0"



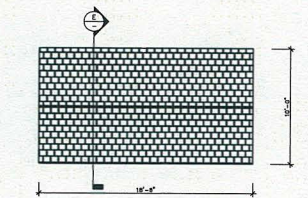
EAST ELEVATION - TRASH ENCLOSURE #1  
SCALE: 1/4" = 1'-0"



WEST ELEVATION - TRASH ENCLOSURE #1  
SCALE: 1/4" = 1'-0"



FLOOR PLAN  
SCALE: 1/4" = 1'-0"



ROOF PLAN  
SCALE: 1/4" = 1'-0"

TYPICAL FLOOR PLAN & ROOF PLAN

COLOR/ MATERIAL SCHEDULE

KEYNOTES

LEGEND:  
 SEE MATERIAL SCHEDULE  
 SEE COLOR / FINISH SCHEDULE

MATERIALS:

- CONCRETE TILE ROOF
- WOOD
- PRECAST CONCRETE
- CONCRETE
- STUCCO
- METAL
- CANVAS
- STONE VENEER

COLOR/FINISHES:

- METAL - HAMMERED MEDIUM BRONZE (FM 2253)
- UMBRELLA CANVAS TOASTY BEIGE (S002)
- PAINT COLOR - DRINK EDWARDS BAMBOO SCREEN (DE 9153)
- PAINT COLOR DRINK EDWARDS MISTY PERRY (DE 9157)
- STONE VENEER - SWING CORNING BRUNN BLAUH PIST (LEICESTER (SP 95A))
- COLORS STONE 100 FT
- ROOFING - GABLE ROOFING DOUBLE EAGLE BLEND SHAY/SHIMON PAINE (M887)
- CONCRETE - SAND BLASTED

OWNER TO APPROVE ALL SELECTED MATERIALS, COLORS AND FINISHES PRIOR TO INSTALLATION. SUBSTITUTION OF ALL FINISHES MUST BE APPROVED EQUAL.

NOTE: ALL METAL TO BE GALVANIZED AND PAINTED

REVISIONS

DRAWING INFO
COMPUTER FILE
DATE: 11/21/2013
SCALE:
JOB NO: 1886

Most drawings are made by computer using the program AutoCAD. All drawings are subject to change without notice. It is the user's responsibility to check the drawings for accuracy and to verify the information on the drawings with the project engineer. The user is responsible for any errors or omissions on the drawings. The user is responsible for any errors or omissions on the drawings. The user is responsible for any errors or omissions on the drawings.

Copyright © 2013 Heathcote & Associates  
 All Rights Reserved

CORNERSTONE

ACACIA HILLS, CALIFORNIA

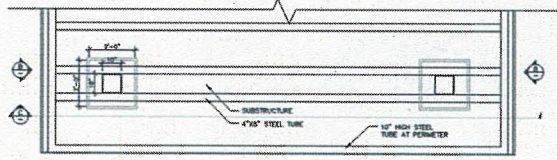
ACACIA ROAD



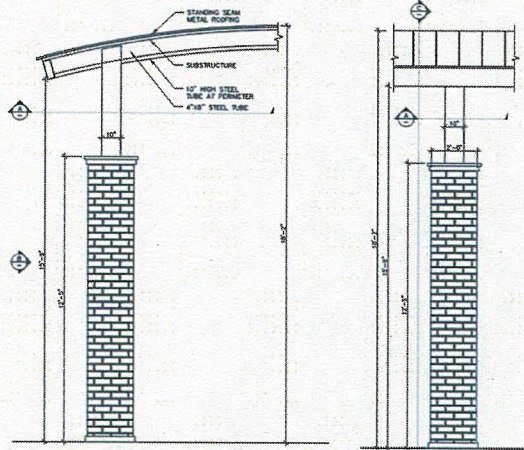
Heathcote & Associates  
 Architecture

3396 Willow Lane  
 Westlake Village  
 California Suite 200  
 Phone 805-497-4700

SHEET  
 A6.0  
 TRASH ENCLOSURE



METAL ROOF COVER CEILING VIEW  
SCALE: 1/2" = 1'-0"



METAL ROOF COVER SECTION  
SCALE: 1/2" = 1'-0"

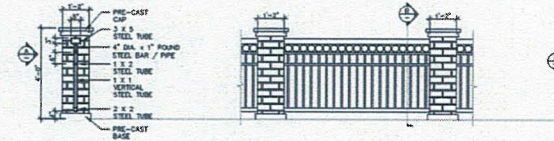
METAL ROOF COVER ELEVATION  
SCALE: 1/2" = 1'-0"

GENERAL NOTES  
1. SEE BUILDING ELEVATION SHEETS FOR MATERIALS AND COLORS TYP., UNLESS NOTED OTHERWISE

METAL ROOF COVERING

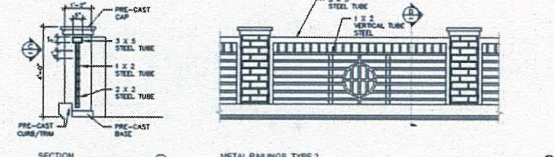


REFERENCE PHOTO  
SCALE: NOT TO SCALE



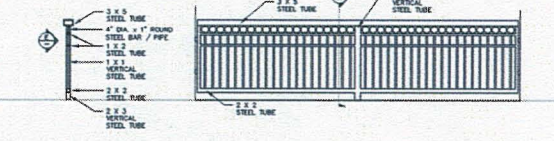
SECTION  
SCALE: 1/2" = 1'-0"

METAL RAILINGS TYPE 1  
SCALE: 1/2" = 1'-0"



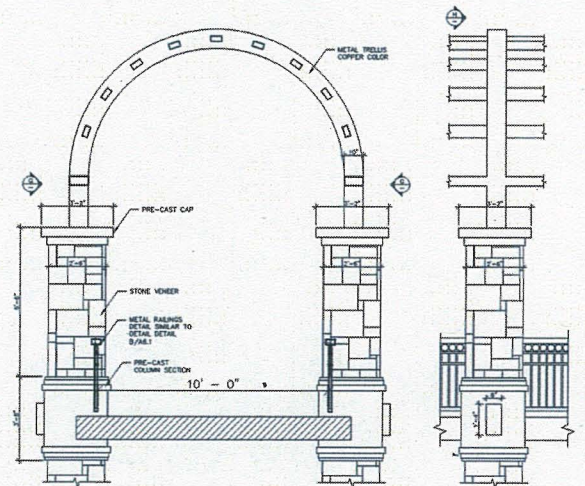
SECTION  
SCALE: 1/2" = 1'-0"

METAL RAILINGS TYPE 2  
SCALE: 1/2" = 1'-0"



SECTION  
SCALE: 1/2" = 1'-0"

METAL RAILINGS TYPE 2  
SCALE: 1/2" = 1'-0"



RAISED WALKWAY & METAL TRELLIS  
SCALE: 1/2" = 1'-0"

ELEVATION  
SCALE: 1/2" = 1'-0"

GENERAL NOTES  
1. SEE BUILDING ELEVATION SHEETS FOR MATERIALS AND COLORS TYP., UNLESS NOTED OTHERWISE

TRELLIS AND HANDRAILS

REVISIONS

DRAWING INFO
COMPILED FILE
DATE
SCALE
JOB NO.
1000

These drawings are made, designed and prepared by Heathcote & Associates, 3396 Willow Lane, Westlake, California 91386. All rights reserved. No part of these drawings may be reproduced, stored in a retrieval system, or transmitted in any form or by any means, electronic, mechanical, photocopying, recording, or by any information storage and retrieval system, without the prior written permission of Heathcote & Associates.

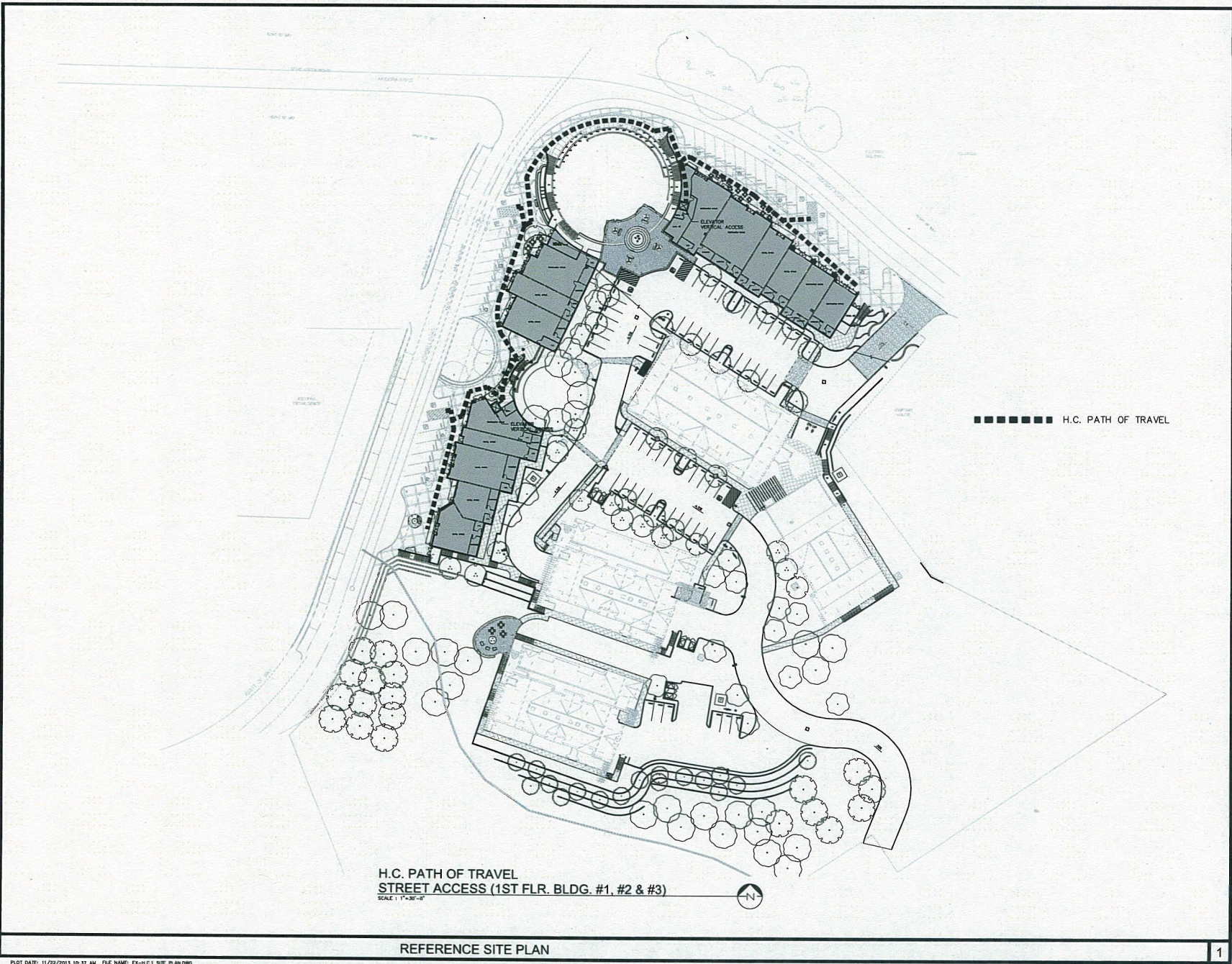
HEATHCOTE & ASSOCIATES  
3396 WILLOW LANE  
WESTLAKE, CALIFORNIA 91386

CORNERSTONE



Architecture  
3396 Willow Lane  
Westlake Village  
California Suite 200  
Phone 805-497-4700

SHEET
A6.1
DETAILS



H.C. PATH OF TRAVEL  
 STREET ACCESS (1ST FLR. BLDG. #1, #2 & #3)  
 SCALE: 1" = 30'-0"

■■■■■■■■ H.C. PATH OF TRAVEL

REFERENCE SITE PLAN

REVISIONS

DRAWING INFO
COMPUTER FILE
DATE
11/21/2013
SCALE
JOB NO.
1888

These drawings are to be used only for the project and site shown on these drawings. All drawings are subject to change without notice. The user assumes all responsibility for the use of these drawings. The user shall indemnify and hold the architect harmless from all claims, damages, costs and expenses, including reasonable attorneys' fees, arising from the use of these drawings. The architect shall not be responsible for the accuracy of the data provided by the user. The architect shall not be responsible for the accuracy of the data provided by the user. The architect shall not be responsible for the accuracy of the data provided by the user.

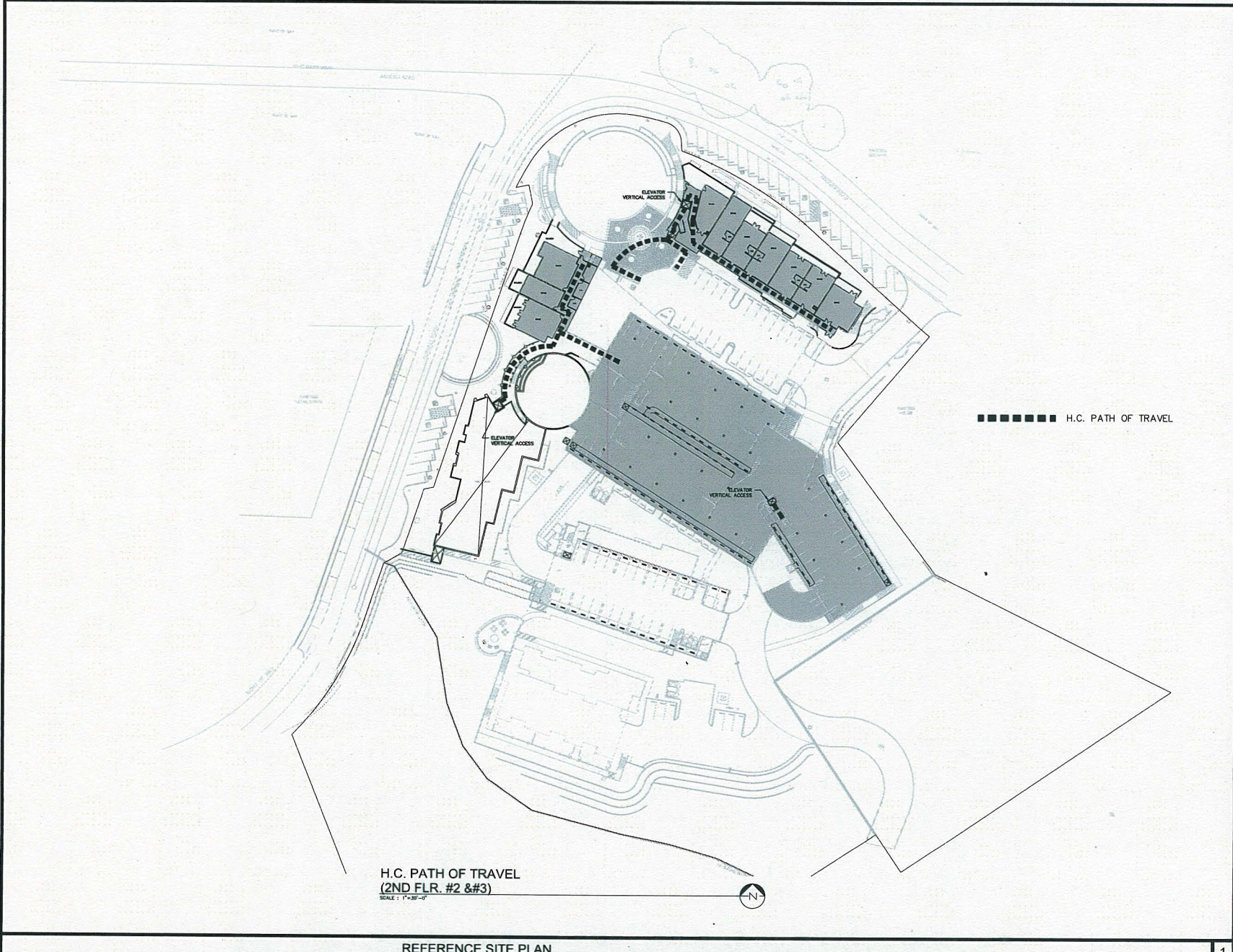
Copyright © 2013 Heathcote & Associates  
 All Rights Reserved

CORNERSTONE  
 ACCORDIA BLVD



Architecture  
 3396 Willow Lane  
 Westlake Village  
 California Suite 200  
 Phone 805-497-4700

SHEET
H.C. 1
H.C. PATH



H.C. PATH OF TRAVEL  
(2ND FLR. #2 & #3)  
SCALE: 1/8"=1'-0"

REFERENCE SITE PLAN

REVISIONS

DRAWING INFO
COMPUTER FILE
DATE 11/27/2013
SCALE
JOB NO. 1888

This is a reference drawing and does not constitute a contract. It is for informational purposes only. It is not intended to be used for construction or other purposes without the written consent of the architect. The architect shall not be responsible for the accuracy of the information provided herein. The architect shall not be responsible for the accuracy of the information provided herein. The architect shall not be responsible for the accuracy of the information provided herein.

CORNERSTONE

AUCUBA HILLS, CALIFORNIA

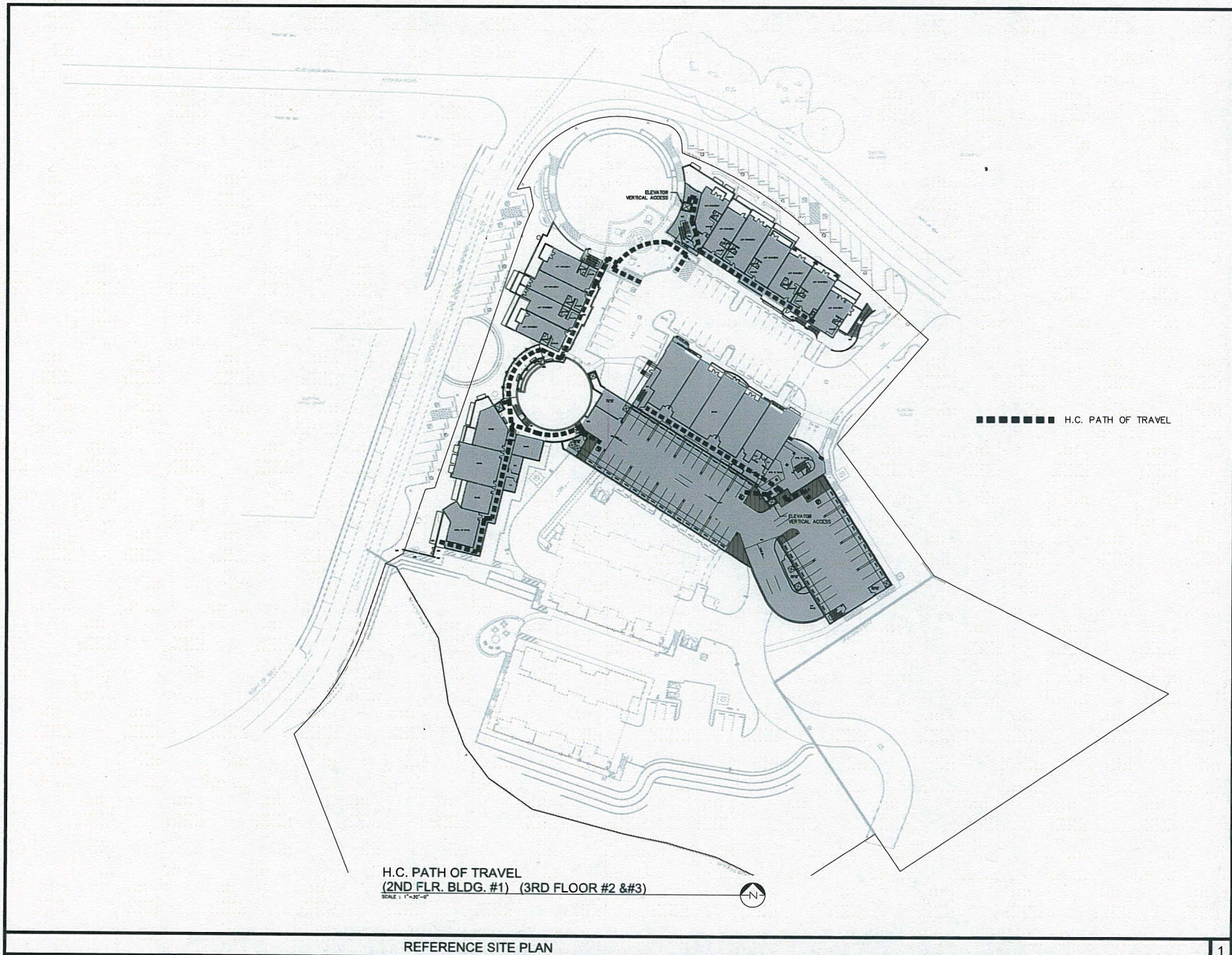
AUCUBA ROAD



Heathcote & Associates

Architecture  
3396 Willow Lane  
Westlake Village  
California Suite 200  
Phone 805-497-4700

SHEET  
H.C. 2  
H.C. PATH



H.C. PATH OF TRAVEL  
 (2ND FLR. BLDG. #1) (3RD FLOOR #2 & #3)  
 SCALE: 1"=30'-0"

■■■■■■■■ H.C. PATH OF TRAVEL

REVISIONS

DRAWING INFO
COMPUTER FILE
DATE 11/22/2013
SCALE
JOB NO. 1858

This drawing is the property of Cornerstone and is not to be reproduced or transmitted in any form or by any means, electronic or mechanical, including photocopying, recording, or by any information storage and retrieval system, without the prior written permission of Cornerstone. All drawings and documents prepared by Cornerstone are the property of Cornerstone and shall remain the property of Cornerstone. Cornerstone and its Associates shall be held harmless for any and all damages, including attorney's fees, arising out of the use of this drawing. All drawings are to be prepared and checked by licensed architects and engineers.

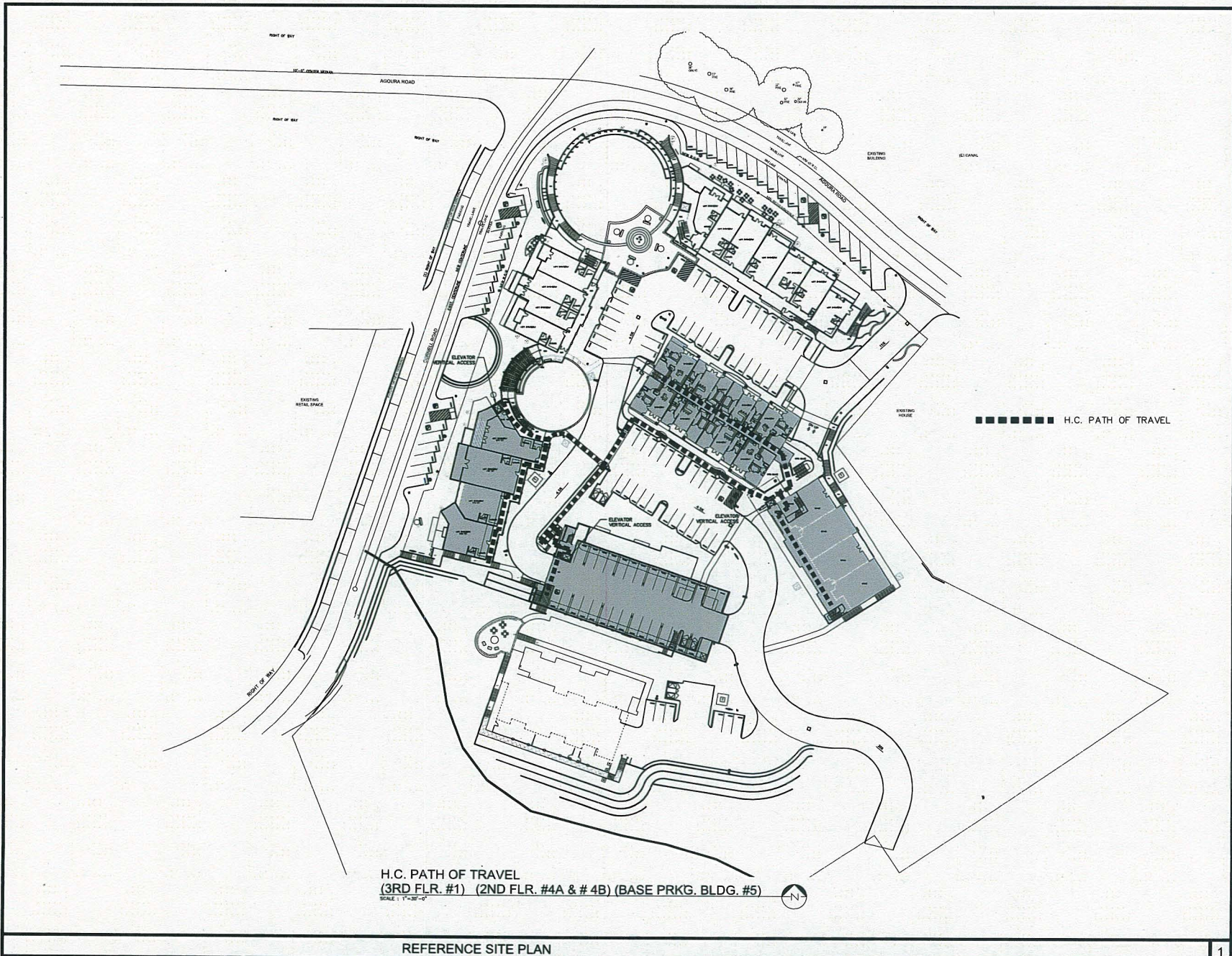
Copyright © 2013 Cornerstone  
 All Rights Reserved

CORNERSTONE  
 ACCORDA ROAD  
 AUDUBON HILLS, CALIFORNIA



**Heathcote**  
 & Associates  
 Architecture  
 3396 Willow Lane  
 Westlake Village  
 California Suite 200  
 Phone 805-497-4700

SHEET
H.C. 3



H.C. PATH OF TRAVEL  
 (3RD FLR. #1) (2ND FLR. #4A & #4B) (BASE PRKG. BLDG. #5)  
 SCALE: 1"=30'-0"

REFERENCE SITE PLAN

REVIEWS

DRAWING INFO
COMPUTER FILE
DATE 11/27/2013
SCALE
JOB NO. 1885

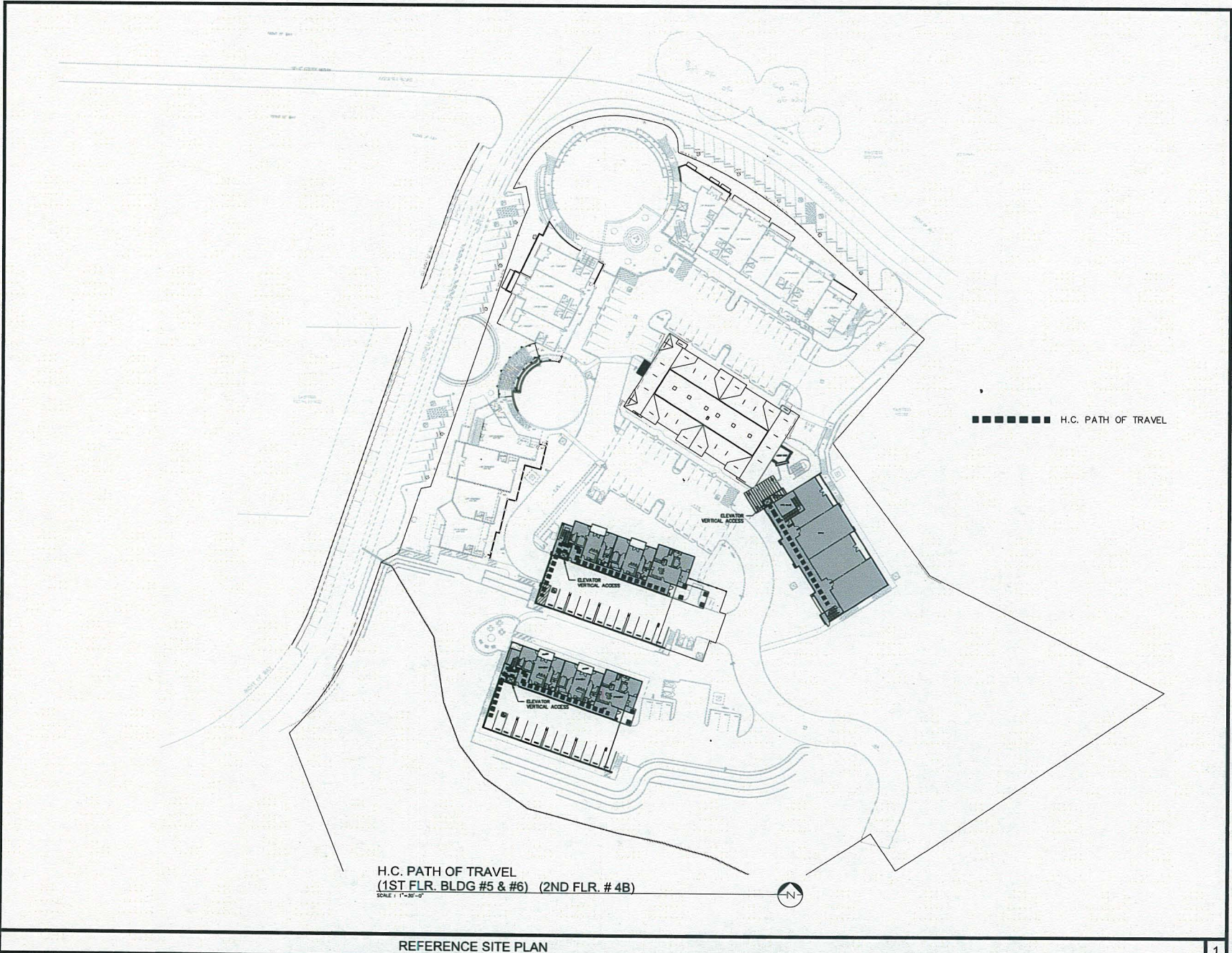
This drawing is made to order and is the property of Heathcote & Associates. All copies and reproductions are prohibited. All changes and corrections must be approved by the architect. Heathcote & Associates make no warranty or representation as to the accuracy of the information contained herein. The architect is not responsible for the design of any structure or equipment which may be installed on the site. The architect is not responsible for the design of any structure or equipment which may be installed on the site. The architect is not responsible for the design of any structure or equipment which may be installed on the site.

CORNERSTONE  
 ASTORIA, OREGON  
 ASTORIA, OREGON, CALIFORNIA  
 ASTORIA, OREGON



**Heathcote & Associates**  
 Architecture  
 3396 Willow Lane  
 Westlake Village  
 California Suite 200  
 Phone 805-497-4700

SHEET  
**H.C. 4**  
 H.C. PATH



H.C. PATH OF TRAVEL  
 (1ST FLR. BLDG #5 & #6) (2ND FLR. # 4B)  
 SCALE: 1" = 30'-0"

■■■■■■■■ H.C. PATH OF TRAVEL

REVISIONS

DRAWING INFO	
COMPIER FILE	
DATE	11/27/2013
SCALE	
JOB NO.	1888

This drawing is to be used only for the project and location shown. It is not to be used for any other project or location. The designer and architect assume no liability for any errors or omissions in this drawing. The architect and engineer assume no liability for any errors or omissions in this drawing. The architect and engineer assume no liability for any errors or omissions in this drawing. The architect and engineer assume no liability for any errors or omissions in this drawing.

Copyright © 2013 Heathcote & Associates  
 All Rights Reserved

CORNERSTONE

AGRIERA ROAD

AGRIERA HILLS, CALIFORNIA



**Heathcote**  
 & Associates

Architecture  
 3396 Willow Lane  
 Westlake Village  
 California Suite 200  
 Phone 805-497-4700

SHEET
H.C. 5