

H.C. PATH OF TRAVEL  
 (2ND FLR. BLDG #5 & #6)  
 SCALE: 1"=30'-0"

REFERENCE SITE PLAN

REVISIONS

DRAWING INFO
DATE: 11/22/2013
SCALE: 1"=30'-0"
JOB NO.: 11856

This drawing is the property of Heathcote & Associates, Inc. All rights reserved. No part of this drawing may be reproduced or transmitted in any form or by any means, electronic or mechanical, including photocopying, recording, or by any information storage and retrieval system, without the prior written permission of Heathcote & Associates, Inc. The user of this drawing is advised that it is not to be used for any purpose other than that intended by the architect. The user of this drawing is advised that it is not to be used for any purpose other than that intended by the architect. The user of this drawing is advised that it is not to be used for any purpose other than that intended by the architect.

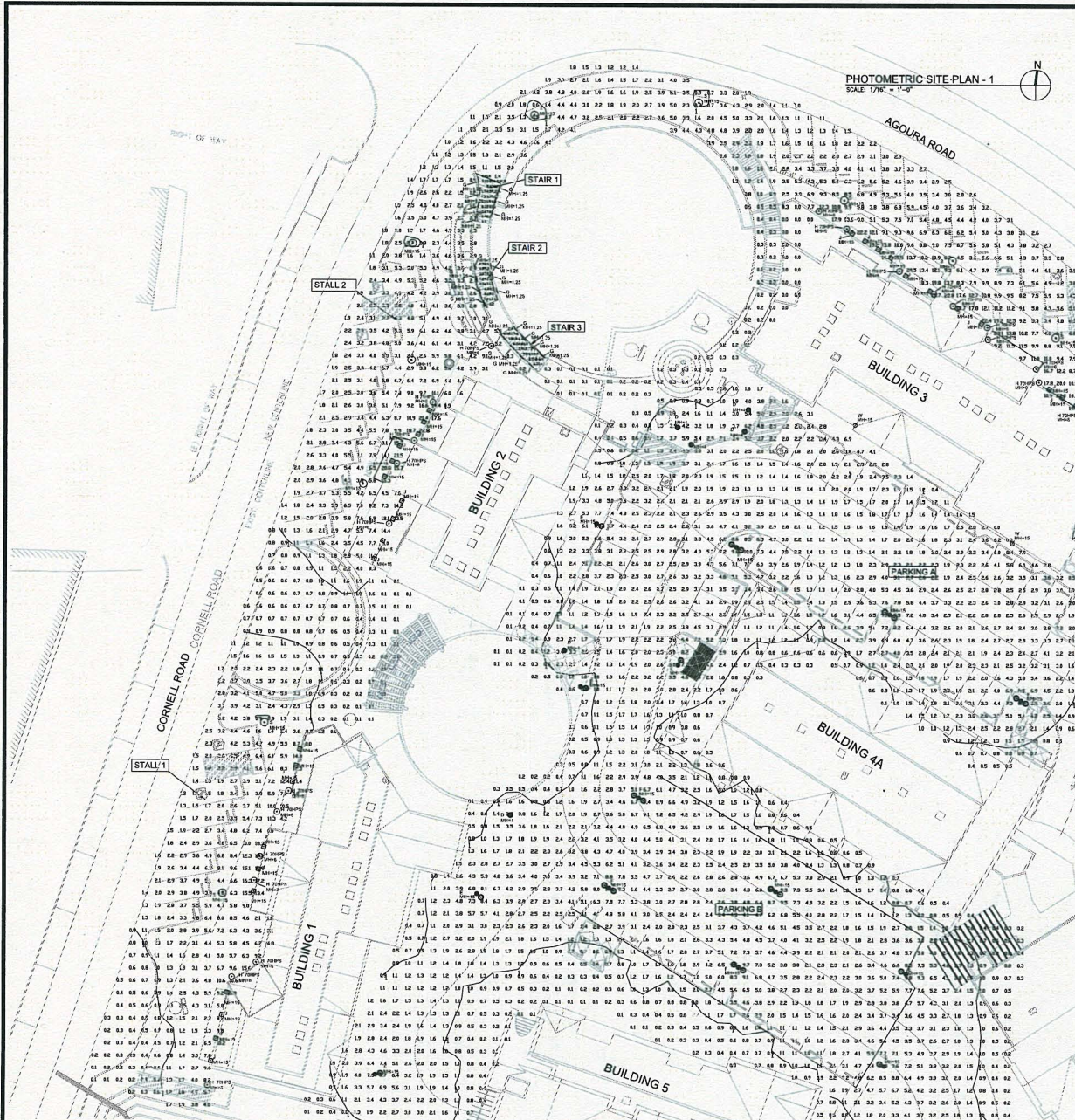
Copyright Heathcote & Associates, Inc. All Rights Reserved.

CORNERSTONE  
 AGOURA HILLS, CALIFORNIA  
 AGOURA ROAD



**Heathcote & Associates**  
 Architecture  
 3396 Willow Lane  
 Westlake Village  
 California Suite 200  
 Phone 805-497-4700

SHEET
H.C. 6



PHOTOMETRIC SITE PLAN - 1  
SCALE: 1/8" = 1'-0"

REVISIONS	

Drawn by: [Name]  
Checked by: [Name]  
Date: NOVEMBER, 2008  
Scale: 1/8" = 1'-0"

These drawings are the work of the undersigned and are not to be used for any other project without the written consent of the undersigned. The undersigned is not responsible for any errors or omissions in these drawings. The undersigned is not responsible for any conditions or circumstances that may arise from the use of these drawings. The undersigned is not responsible for any conditions or circumstances that may arise from the use of these drawings.

CORNERSTONE  
AGOURA HILLS, CALIFORNIA

**JOB NAME:**  
CORNERSTONE BLDG 2\_3\_REV1.A32  
REPORT FOR: STEVE LEE  
REPORT BY: ERNE LEGASH/APPLICATIONS ENGINEER  
DRAWING NO.: SEE DRAWING  
DATE: 11/10/2008

**DISCLAIMER**  
LUMINAIRE DATA IS OBTAINED ACCORDING TO IES PROCEDURES UNDER CONTROLLED LABORATORY CONDITIONS. FIELD MEASUREMENTS MAY DIFFER FROM COMPUTER PREDICTIONS DUE TO MANY UNCONTROLLABLE FACTORS SUCH AS: LINC, VOLTAGE VARIATIONS, LAMP PERFORMANCE, AND JOBSITE CONDITIONS.

**LABEL AREA SUMMARY**

LABEL	AVG	MAX	MIN	AVG/MIN	MAX/MIN
PARKING A	2.97	10.0	1.1	2.70	9.09
PARKING B	3.70	10.2	1.0	3.70	10.20
STALL 1	3.88	15.1	0.9	4.29	16.78
STALL 2	3.90	8.1	0.9	4.33	9.00
STALL 3	4.08	8.9	1.1	3.69	9.00
STAIR 1	3.09	8.0	0.2	15.45	45.00
STAIR 2	2.84	7.2	0.3	9.80	24.00
STAIR 3	2.85	7.6	0.2	14.25	38.00

**LUMINAIRE SCHEDULE**

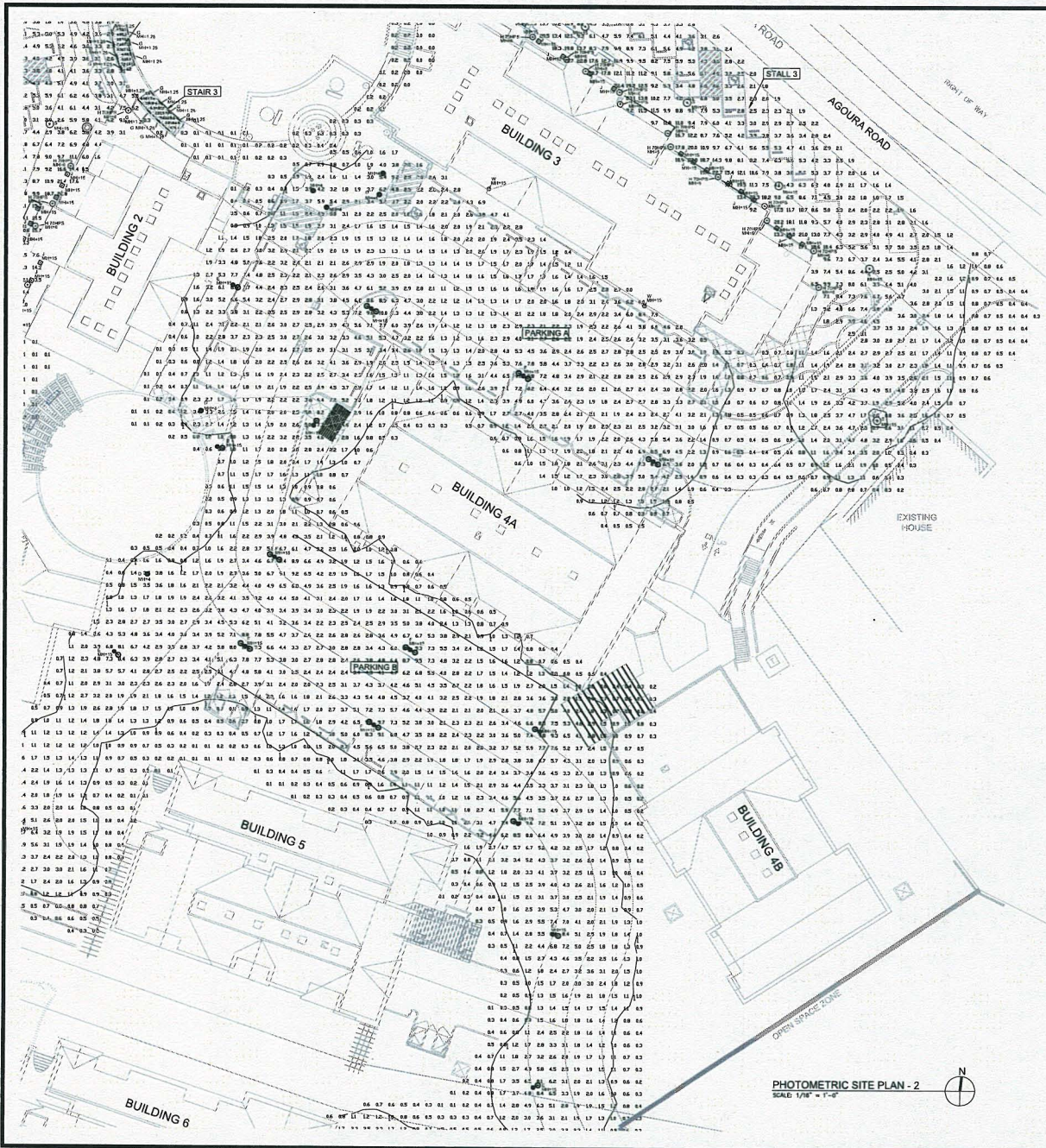
SYMBOL	QTY	LABEL	ARRANGEMENT	LUMENS	LF	DESCRIPTION
⊙	8	D	SINGLE	9500	0.800	SEE SECTION 2 ON SHEET E2
⊙	8	C	SINGLE	16000	0.800	SEE SECTION 1 ON SHEET E2
⊙	8	F	DOUBLE	16000	0.800	SEE SECTION 1 ON SHEET E2
⊙	22	D	SINGLE	1800	0.800	SEE SECTION 1 ON SHEET E4
⊙	26	H 70mm	SINGLE	6300	0.800	SEE SECTION 2 ON SHEET E4
⊙	37	J	SINGLE	960	0.800	SEE SECTION 3 ON SHEET E4
⊙	13	S	SINGLE	28000	0.800	SEE SECTION 1 ON SHEET E3
⊙	2	W	SINGLE	16000	0.800	SEE SECTION 1 ON SHEET E2



Heathcote & Associates, Inc.  
Architecture  
3396 Willow Lane  
Westlake, CA 91361  
Suite 200  
Phone 805-497-4700

SHEET  
E1.1  
PHOTOMETRIC SITE PLAN

PRELIMINARY NOT FOR CONSTRUCTION



PHOTOMETRIC SITE PLAN - 2  
SCALE 1/8" = 1'-0"



REVISIONS	

DRAWING INFO  
 COMPUTER FILE  
 DATE  
 NOVEMBER, 2008  
 SCALE  
 JOB NO.  
 163.18

These drawings were prepared by the  
 property of Heathcote & Associates. All rights  
 are reserved. No part of these drawings  
 may be reproduced or transmitted in  
 any form or by any means, electronic  
 or mechanical, including photocopying,  
 recording, or by any information  
 storage and retrieval system, without  
 the prior written permission of Heathcote  
 & Associates.

Copyright © Heathcote & Associates  
 All Rights Reserved

CORNERSTONE  
 AGOURA HILLS, CALIFORNIA

**JOB NAME:**  
 CORNERSTONE BLDG 2 - 3 - REV1.A32  
 REPORT FOR: STEVE LEE  
 REPORT BY: ERNE LICATA/APPLICATIONS ENGINEER  
 MOUNTING H: SEE DRAWING  
 DATE: 11/16/2008

**DISCLAIMER**  
 LUMINAIRE DATA IS OBTAINED ACCORDING TO IES  
 PROCEDURES UNDER CONTROLLED LABORATORY CONDITIONS.  
 FIELD RESULTS MAY DIFFER FROM COMPUTER PREDICTIONS  
 DUE TO MANY UNCONTROLLABLE FACTORS SUCH AS: LINE  
 VOLTAGE VARIATIONS, LAMP PERFORMANCE, AND JOBSITE  
 CONDITIONS.

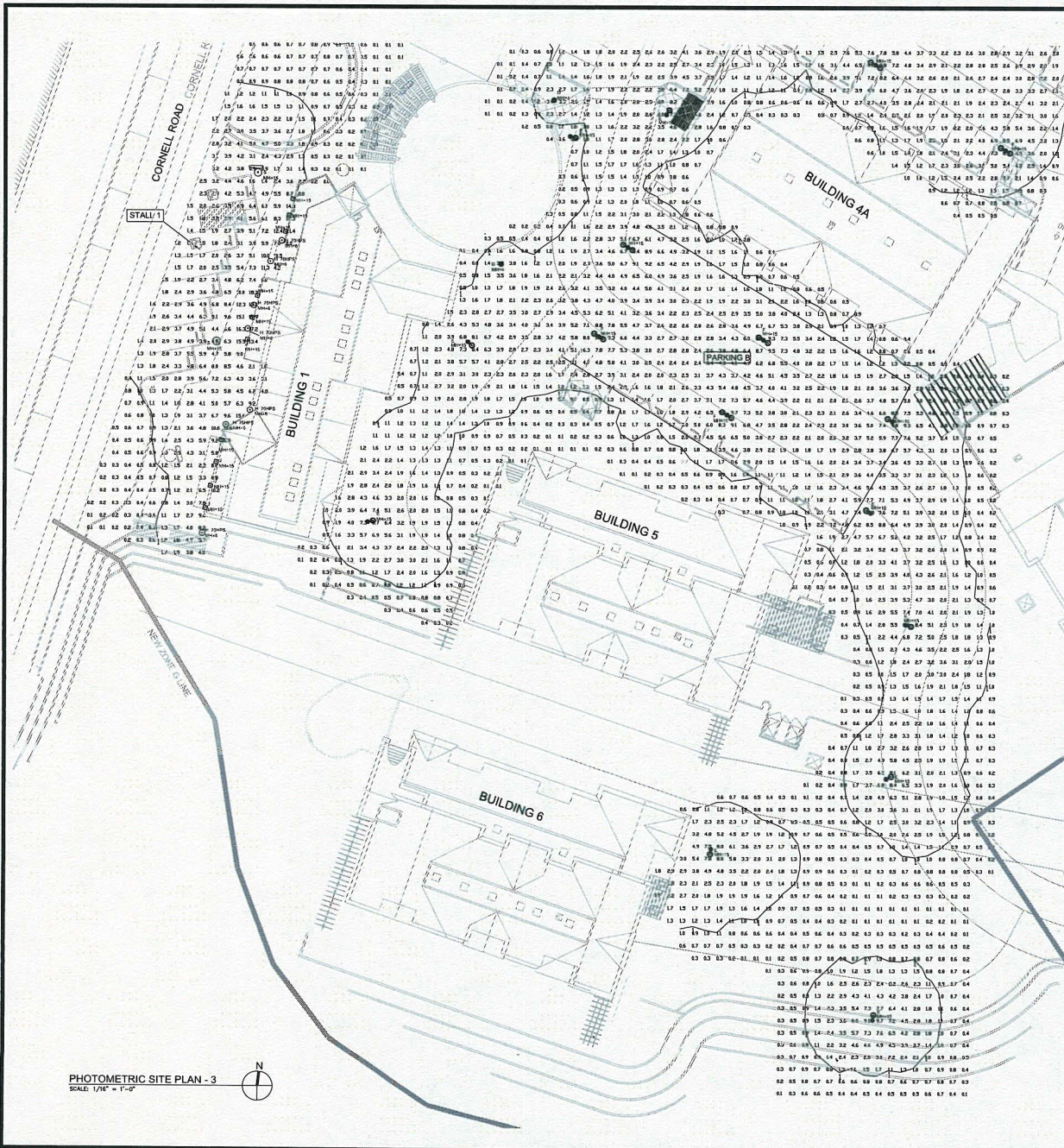
STATISTICAL AREA SUMMARY					
LABEL	FAC	TAKE	MIN	AVG/AM	MAX/AM
PARKING A	2.97	10.2	1.1	2.70	8.09
PARKING B	3.70	10.2	1.0	3.70	10.20
STALL 1	3.85	15.1	0.9	4.29	16.78
STALL 2	3.90	8.1	0.9	4.33	9.00
STALL 3	4.05	9.9	1.1	3.69	9.00
STAIR 1	3.09	8.0	0.2	15.45	45.00
STAIR 2	2.94	7.2	0.3	9.80	24.00
STAIR 3	2.85	7.8	0.2	14.20	38.00

LUMINAIRE SCHEDULE						
SYMBOL	QTY	LABEL	ARRANGEMENT	LUMENS	LLF	DESCRIPTION
●	8	D	SINGLE	9500	0.800	SEE SECTION 2 ON SHEET E2
○	8	E	SINGLE	16000	0.800	SEE SECTION 1 ON SHEET E2
○	9	F	DOUBLE	18000	0.800	SEE SECTION 1 ON SHEET E2
□	22	C	SINGLE	1800	0.900	SEE SECTION 1 ON SHEET E4
○	28	H 70mm	SINGLE	8500	0.800	SEE SECTION 2 ON SHEET E4
●	37	J	SINGLE	9500	0.800	SEE SECTION 2 ON SHEET E4
○	13	S	SINGLE	29000	0.800	SEE SECTION 1 ON SHEET E2
○	2	W	SINGLE	16000	0.800	SEE SECTION 1 ON SHEET E2



Heathcote & Associates  
 Architecture  
 3356 Willow Lane  
 Westlake, California Suite 200  
 Phone 805-497-4700

SHEET  
**E1.2**  
 PHOTOMETRIC SITE PLAN  
 PRELIMINARY NOT FOR CONSTRUCTION



PHOTOMETRIC SITE PLAN - 3  
SCALE: 1/16" = 1'-0"

REVISIONS

DRAWING INFO
CONTRACT FILE
DATE
NOVEMBER, 2008
SCALE
JOB NO.
18113

This drawing is the property of the client. It is not to be used for any other project without the written consent of the client. The client is responsible for the accuracy of the information provided. The engineer is not responsible for the accuracy of the information provided. The engineer is not responsible for the accuracy of the information provided.

Copyright © 2008 by Heathcote & Associates  
All Rights Reserved

CORNERSTONE

AGRIUM HILLS, CALIFORNIA

AGRIUM ROAD

**JOB NAME:**  
CORNERSTONE BLDG 2\_3\_REV1.A32  
REPORT FOR: STEVE LEE  
REPORT BY: ERIC LEGAS/APPLICATIONS ENGINEER  
MOUNTING HT: SEE DRAWING  
DATE: 11/02/2008

**DISCLAIMER**  
LUMINAIRE DATA IS OBTAINED ACCORDING TO IES PROCEDURES UNDER CONTROLLED LABORATORY CONDITIONS. FIELD RESULTS MAY DIFFER FROM COMPUTER PREDICTIONS DUE TO MANY UNCONTROLLABLE FACTORS SUCH AS: LINE VOLTAGE VARIATIONS, LAMP PERFORMANCE, AND JOBSITE CONDITIONS.

TABLE					
LABEL	AVG	MAX	MIN	AVG/MIN	MAX/MIN
PARKING A	2.97	10.0	1.1	3.70	9.09
PARKING B	3.70	10.2	1.0	3.70	10.20
STALL 1	3.86	15.1	0.9	4.29	16.78
STALL 2	3.80	8.1	0.9	4.33	9.00
STALL 3	4.08	9.9	1.1	3.69	9.00
STAR 1	3.08	8.0	0.2	15.45	45.00
STAR 2	2.94	7.2	0.3	9.80	24.00
STAR 3	2.85	7.6	0.2	14.25	38.00

LUMINAIRE SCHEDULE						
SYMBOL	QTY	LABEL	ARRANGEMENT	LUMENS	LUF	DESCRIPTION
⊙	6	D	SINGLE	9500	0.800	SEE SECTION 2 ON SHEET E2
⊙	6	E	SINGLE	16000	0.800	SEE SECTION 1 ON SHEET E2
⊙	9	F	DOUBLE	16000	0.800	SEE SECTION 1 ON SHEET E2
⊙	1	G	SINGLE	1800	0.800	SEE SECTION 1 ON SHEET E4
⊙	28	H	700ga	6300	0.800	SEE SECTION 2 ON SHEET E4
⊙	37	J	SINGLE	960	0.800	SEE SECTION 1 ON SHEET E4
⊙	13	S	SINGLE	29000	0.800	SEE SECTION 1 ON SHEET E3
⊙	2	W	SINGLE	16000	0.800	SEE SECTION 1 ON SHEET E2

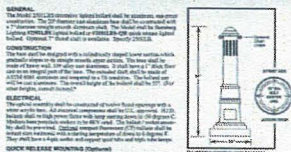


Heathcote & Associates

Architecture  
3396 Willow Lane  
Westlake, California 91391  
Phone 805-497-4700

PRELIMINARY NOT FOR CONSTRUCTION  
E1.3  
PHOTOMETRIC SITE PLAN

**STERBERG** Ornamental Ballasts **15-417**  
**2500LBS LINCOLN LIGHTED BOLLARD SPECIFICATIONS**



**GENERAL:** The 2500LBS Lincoln Lighted Bollard is designed for use in areas where a high level of security is required. The bollard is constructed from a heavy-duty, weather-resistant material and is designed to withstand a load of 2500 lbs. The bollard is finished with a powder-coated finish and is available in a variety of colors. The bollard is designed to be installed in a concrete foundation and is available in a variety of heights.

**INSTALLATION:** The bollard should be installed in a concrete foundation. The foundation should be 18" in diameter and 24" deep. The bollard should be installed in the center of the foundation and should be secured with a steel anchor bolt. The bollard should be installed in a concrete foundation and should be secured with a steel anchor bolt.

**BUILDING A PART NUMBER**

POST	ARM	FIXTURE	OPTICS	FINISH
1	1	1	1	1

**PART NUMBER SELECTIONS**

POST	ARM	FIXTURE	OPTICS	FINISH
1	1	1	1	1

**STERBERG LIGHTING**  
 555 Lawrence Ave. Foothill, CA 91122-947-588-3400 • Fax 947-588-3440  
 www.sternberglighting.com • Email: info@sternberglighting.com

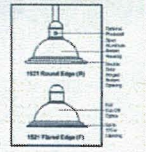
**LIGHT TYPE "D"**

LINCOLN LIGHTED BOLLARD  
 MANUFACTURED BY STERNBERG  
 FINISH: POLYURETHANE  
 LAMP: HP150/400/120  
 LIGHT COLOR: 350  
 WATT: 150  
 LUMENS: 16500

**STERBERG LIGHTING**  
 555 Lawrence Ave. Foothill, CA 91122-947-588-3400 • Fax 947-588-3440  
 www.sternberglighting.com • Email: info@sternberglighting.com

LIGHTING FIXTURE TYPE D 2

**STERBERG** Architectural Down Lighting Fixtures **15-278**  
**1521 OMEGA SERIES SPECIFICATIONS**



**GENERAL:** The 1521 Omega R and F series are full cut-off, recessive downlight fixtures having a spun aluminum bell-shaped shade that is available in two types of exterior finish. Attached to the upper portion of the spun aluminum bell shade is an aluminum casting which acts as a means of supporting the fixture to an assortment of arms. All fixtures have sealed and rotatable optics and are available with flat, step, clear or frosted glass.

**BALLAST HOUSING:** The ballast is housed in the upper section of the spun aluminum shade and is easily accessible by means of two two-less entry doors. The ballast may be removed from the fixture after removal of one wing nut, lock washer and unscrewing two sets of electrical quick disconnect connectors.

**ELECTRICAL:** The fixture shall be E.H. or E.T.L. listed. I.I.D. ballasts shall be high power factor with lamp starting down to -30 degrees C. Medium and large porcelain sockets are 85V rated. The ballast may be removed by means of the lamp socket and wire supply via quick disconnect connectors for ease of replacement.

**FIXTURE ASSEMBLY:** The 1521 fixtures shall be made of 1/2 ga. spun aluminum and having an outside diameter of 2 1/8" x 1 7/8" in height (1 7/8" in 1/2" hole). Two-less entry allows easy access to lamp and ballast. A spring type ballast access to lamp compartment, which has an additional captive (front) access panel, allows access to the quick removal ballast tray. Two decorative edge rings are available, either round (R) or flared (F). An optional tamper-resistant (TR) is available in either a plastic fixture installation or with added brass flange.

**OPTICAL OPTIONS:** NIGHTMAY™ STAR-SHIELD™ Roof Optics distribution shall be delivered by multi-layer coated and anodized reflector systems which eliminate light loss and provide full cut-off. This reflector cavity shall be made of superior modified aluminum. Flat lens models provide full cut-off performance. Roof Optics Type 2 (RO2CS) and Type 3 (RO3CS) are available in either a plastic fixture installation or with added brass flange.

**STERBERG LIGHTING**  
 555 Lawrence Ave. Foothill, CA 91122-947-588-3400 • Fax 947-588-3440  
 www.sternberglighting.com • Email: info@sternberglighting.com

**STERBERG** Architectural Down Lighting Specifications **15-277**  
**BUILDING A PART NUMBER**

**POST & ARM FIXTURES**

POST	ARM	FIXTURE	OPTICS	FINISH
1	1	1	1	1

**WALL FIXTURES**

WALL	ARM	FIXTURE	OPTICS	FINISH
1	1	1	1	1

**HANGING FIXTURES**

HANGING	ARM	FIXTURE	OPTICS	FINISH
1	1	1	1	1

**PART NUMBER SELECTIONS**

POST	ARM	FIXTURE	OPTICS	FINISH
1	1	1	1	1

**STERBERG LIGHTING**  
 555 Lawrence Ave. Foothill, CA 91122-947-588-3400 • Fax 947-588-3440  
 www.sternberglighting.com • Email: info@sternberglighting.com

**LIGHT TYPE "W"**

OMEGA SERIES  
 MANUFACTURED BY STERNBERG  
 FINISH: POLYURETHANE  
 OPTICS: 1521R  
 LAMP: HP150/400/120  
 LIGHT COLOR: 350  
 WATT: 150  
 LUMENS: 16500

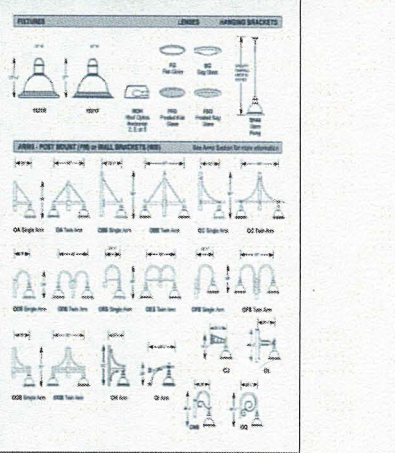
**LIGHT TYPE "E"**

OMEGA SERIES  
 MANUFACTURED BY STERNBERG  
 FINISH: POLYURETHANE  
 OPTICS: 1521R  
 LAMP: HP150/400/120  
 LIGHT COLOR: 350  
 WATT: 150  
 LUMENS: 16500

**STERBERG LIGHTING**  
 555 Lawrence Ave. Foothill, CA 91122-947-588-3400 • Fax 947-588-3440  
 www.sternberglighting.com • Email: info@sternberglighting.com

LIGHTING FIXTURE TYPE E & W 1

**STERBERG** Architectural Down Lighting Fixtures **15-279**  
**1521 OMEGA SERIES SPECIFICATIONS**



**STERBERG** Architectural Down Lighting Fixtures **15-277**  
**1521 OMEGA SERIES SPECIFICATIONS**

**PHOTOCELLS**

Photo-cells shall be either the thermo-to-metal button type or the electronic button type. On single post top fixtures the photocell shall be mounted in the filter and pre-wired to ballast. On multiple head fixture assemblies photocells shall be mounted in the pole shaft on an access plate and are pre-wired to ballast housing assemblies and filters are packaged separately for ease of wiring to sources. The thermo-to-metal photocell shall be designed to turn on at 1.5 footcandle and turn off at not more than 5 footcandle. The electronic button type photocell is instant on and a 5-10 second turn off and shall turn on at 1.5 footcandle with a turn-off at 2-3 footcandle. Photocells are either 120-volt or 208-277 volt.

**ARMS**

All arms are made of cast aluminum and/or extruded aluminum. Arms with decorative flanges have meticulously detailed scroll work and gracefully curved brackets. All fixtures will have its finish either welded to the arm or will be mechanically attached at the factory to ensure arms will be plumb, secure and level over the life of the installation. Each arm shall be bolted to a post mount adapter, which is welded to the pole to ensure proper alignment to the base. Arms are pre-wired for ease of installation.

**FINISH**

Finish coating, each assembly shall be chemically cleaned and etched in a 3-stage washing system which includes alkaline cleaning, aning, phosphoric etching, reverse osmosis water rinsing, and non-toxic chrome plating to ensure corrosion resistance and excellent adhesion for the finish coating. The finish coating shall be electrostatically applied semi-gloss, super durable polymer powder baked at 400 degrees for a durable and superior, color consistent finish. Our optional unique Verde Green finish and Swallow Blue finish are hand hand-buffed using a 3-step process. The total assembly shall be wrapped in shockproof wrapping or fully enclosed in corrugated cartons.

**WARRANTY**

Five-year limited warranty. See product and finish warranty guide for details.

**STERBERG LIGHTING**  
 555 Lawrence Ave. Foothill, CA 91122-947-588-3400 • Fax 947-588-3440  
 www.sternberglighting.com • Email: info@sternberglighting.com

**LIGHT TYPE "R"**

OMEGA SERIES  
 MANUFACTURED BY STERNBERG  
 FINISH: POLYURETHANE  
 OPTICS: 1521R  
 LAMP: HP150/400/120  
 LIGHT COLOR: 350  
 WATT: 150  
 LUMENS: 16500

**STERBERG LIGHTING**  
 555 Lawrence Ave. Foothill, CA 91122-947-588-3400 • Fax 947-588-3440  
 www.sternberglighting.com • Email: info@sternberglighting.com

LIGHTING FIXTURE TYPE E & W 1

REVISIONS

DRAWING INFO
COMPUSER FILE
DATE
NOVEMBER, 2008
SCALE
A8 IN 1/8" X 1/8"

Drawn through an AIA or ASCE approved professional seal of a registered professional architect or engineer. All drawings are subject to change without notice. The manufacturer reserves the right to change specifications without notice. The manufacturer shall not be responsible for any errors or omissions. The manufacturer shall not be responsible for any damage or injury resulting from the use of the product. The manufacturer shall not be responsible for any damage or injury resulting from the use of the product.

©2008 Sternberg Lighting  
 555 Lawrence Ave. Foothill, CA 91122-947-588-3400 • Fax 947-588-3440  
 www.sternberglighting.com • Email: info@sternberglighting.com

CORNERSTONE

AGUIRA ROAD  
 AGUIRA MILLS, CALIFORNIA



**Heathcote & Associates**  
 Architecture

3396 Willow Lane  
 Westlake  
 California Suite 200  
 Phone 805-497-4700

PRELIMINARY NOT FOR CONSTRUCTION

2

E2

JOINING OUT SHEETS

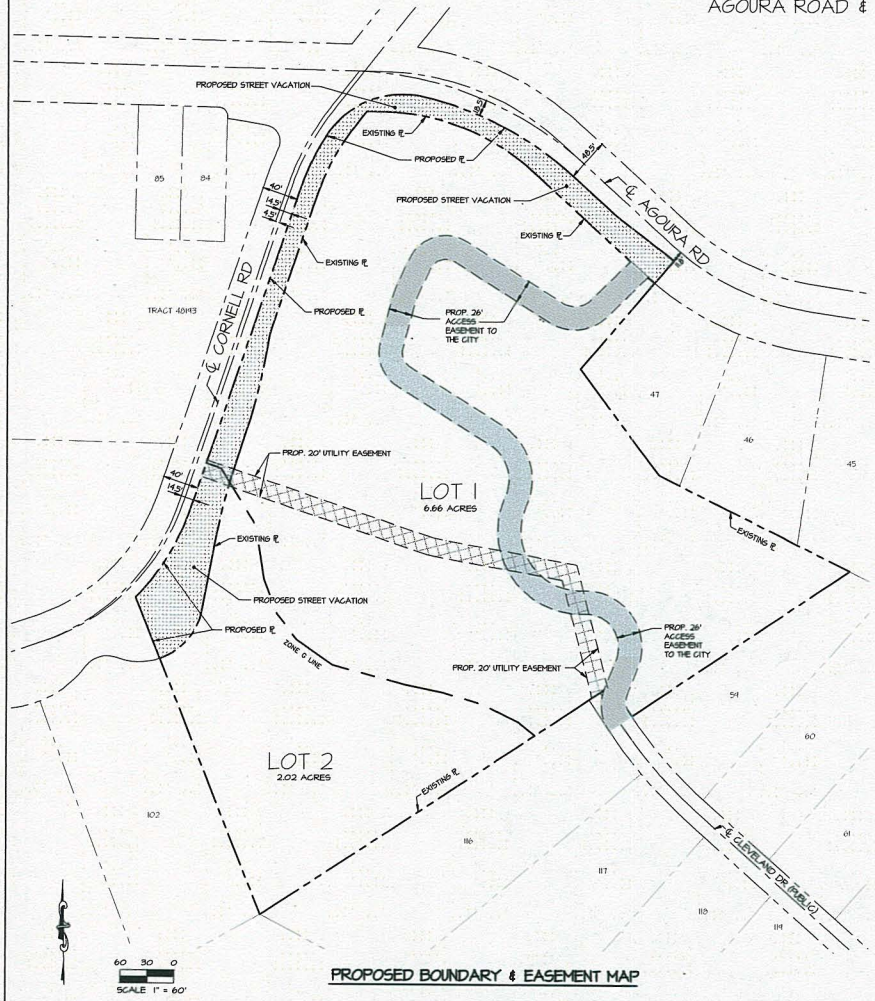
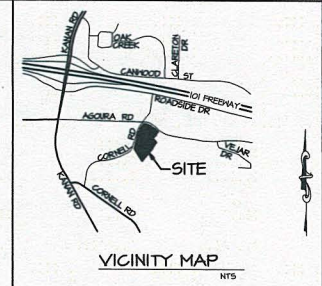




# TENTATIVE PARCEL MAP 70559

## CORNERSTONE

AGOURA ROAD & CORNELL ROAD



### CONSTRUCTION NOTES

1. CONSTRUCT DRIVEWAY PER TYPICAL SECTION ON SHEET 4.
2. CONSTRUCT ROAD PER CORNELL ROAD TYPICAL SECTION ON SHEET 4.
3. CONSTRUCT ROAD PER AGOURA ROAD TYPICAL SECTION ON SHEET 4.
4. CONSTRUCT HANDICAP RAMP.
5. EXISTING POWER POLE, STREET SIGN & TELEPHONE HANDBOLE TO BE REMOVED OR RELOCATED. EXISTING UTILITIES SHALL HAVE A MINIMUM CLEARANCE OF 50' FROM THE NEAREST FACE OF THE OBJECT TO THE PROPOSED EDGE OF PAVEMENT.
6. CONSTRUCT CURB OPENING CATCH BASIN.
7. INSTALL CATCH BASIN FILTER INSERT "LOGSARD-PLUS" PER KRISTAR ENTERPRISES, INC. PRODUCT.
8. RECONSTRUCT EX. DRIVEWAY ENTRANCE TO LYNNED FACILITY. PERMISSION FROM FACILITY OWNER IS REQUIRED.

### PROJECT NARRATIVE

1. THE PROPOSED PROJECT CONSISTS OF 24 EXISTING LOTS AND PROPOSES TO CONSOLIDATE INTO 2 LOTS.
2. THE PROPOSED SUBDIVISION IS A PROJECT AS DEFINED IN SECTION OF THE CIVIL CODE OF THE STATE OF CALIFORNIA AND IS FILED PURSUANT TO THE SUBDIVISION MAP ACT.
3. THIS PROJECT REQUEST A STREET VACATION OF CORNELL ROAD & AGOURA ROAD AS SHOWN HEREON AND ALSO THE VACATION OF CLEVELAND DRIVE WITHIN THE BOUNDARY PROPERTY AS SHOWN ON SHEET 2.
4. A PROPOSED 20' ACCESS EASEMENT AND 20' UTILITY EASEMENT WILL BE CREATED FOR THE USE OF ANY FUTURE DEVELOPMENT OF THE REMAINING LOTS.
5. ALL EXISTING EASEMENTS WITHIN THE PROPERTY BOUNDARY WILL BE GUTLINED AS SHOWN ON SHEET 2.

### SITE SUMMARY

EXISTING USE: VACANT LAND  
**SITE AREA**  
 EXISTING (2008) = 523,561 SQ. FT. = 7.43 ACRES  
 PROPOSED (GROSS LOTS 1 & 2) = 371,910 SQ. FT. = 8.60 ACRES  
 LOT 1 = 282,300 SQ. FT. = 6.46 AC.  
 LOT 2 (ZONE G) = 87,610 SQ. FT. = 2.02 AC.  
 CLEVELAND DRIVE VACATION = 28,000 SQ. FT. = 0.51 ACRES  
 CORNELL ROAD VACATION = 0.46 ACRES  
 AGOURA ROAD VACATION = 0.22 AC.

### NFDES REQUIREMENT KEY

- A ALL TRASH ENCLOSURES TO BE FULLY COVERED.
- B ALL CB'S TO BE MARKED "DO NO DUMP" - DRAINS TO OCEAN.

### EARTH QUANTITIES

CUT: 45,000 CU. YDS. FILL: 2,500 CU. YDS.  
 EXPORT: 52,500 CU. YDS.

**NOTE:**  
 THE EARTHWORK SUMMARY IS PROVIDED AS COURTESY AND CONVENIENCE TO THE CONTRACTOR AND ARE APPROXIMATE ONLY. BECAUSE OF VARIABLES SUCH AS SHRINKAGE, STRIPPING, COMPACTION, ETC., DEVIATION FROM CALCULATED QUANTITIES CAN BE EXPECTED. CONTRACTOR SHALL DETERMINE FOR HIMSELF THE QUANTITY OF EARTH MOVING THAT WILL BE REQUIRED TO ROUGH GRADE THIS JOB. IT IS UNDERSTOOD THAT THE CONTRACTOR'S BID PRICE FOR ROUGH GRADING THIS JOB IS BASED ON THE CONTRACTOR'S OWN EARTHWORK ESTIMATE AND INCLUDES PROVISIONS FOR ANY IMPORT OR EXPORT REQUIRED TO BRING THE JOB TO A FINISH GRADE CONDITION.

### SHEET INDEX

1. TITLE SHEET
2. TOPOGRAPHIC SURVEY
3. PRELIMINARY GRADING & DRAINAGE PLAN
4. PRELIMINARY GRADING & DRAINAGE PLAN
5. CORNELL ROAD & MAIN DRIVEWAY PROFILE
6. SECTIONS

### UTILITIES

GAS	SOUTHERN CALIFORNIA GAS CO. 800.421.2200
ELECTRIC	SOUTHERN CALIFORNIA EDISON CO. 800.655.4355
TELEPHONE	AT&T 800.310.2855
WASTE	G.I. INDUSTRIES 818.251.2100
CABLE TV	CHARTER CABLE 800.964.4844
	TIME WARNER 888.842.2259
WATER	LAS VIRGENES MUNICIPAL WATER DISTRICT 818.251.2100

### ZONING

EXISTING: SPECIFIC PLAN  
 PROPOSED: SPECIFIC PLAN

### BENCH MARK

LA COUNTY BM DY 10002  
 L&T IN S CB 20FT S/O C/L AGOURA RD & 15FT W/ CORNELL RD INT 810 W END OF BRIDGE #245  
 ELEV. 843.828 (MALIBU 1940)

### OWNER/DEVELOPER

AGOURA AND CORNELL ROADS, LP  
 22148 SHERMAN WAY SUITE #103  
 CANOGA PARK, CALIFORNIA 91309  
 818.714.5229  
 ATTN: DORON BELFAND

### ARCHITECT

HEATHCOTE & ASSOCIATES  
 33946 HILLOW LANE SUITE 200  
 WESTLAKE VILLAGE, CALIFORNIA 91361  
 805.447.4700  
 ATTN: GARY HEATHCOTE

### TITLE SHEET

APR 2064-024-028 TRSU 011 & 23, 2064-024-024 & 2064-030-001 TRSU 013 & 11  
**TENTATIVE PARCEL MAP 70559**

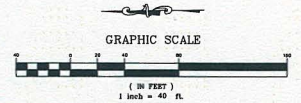
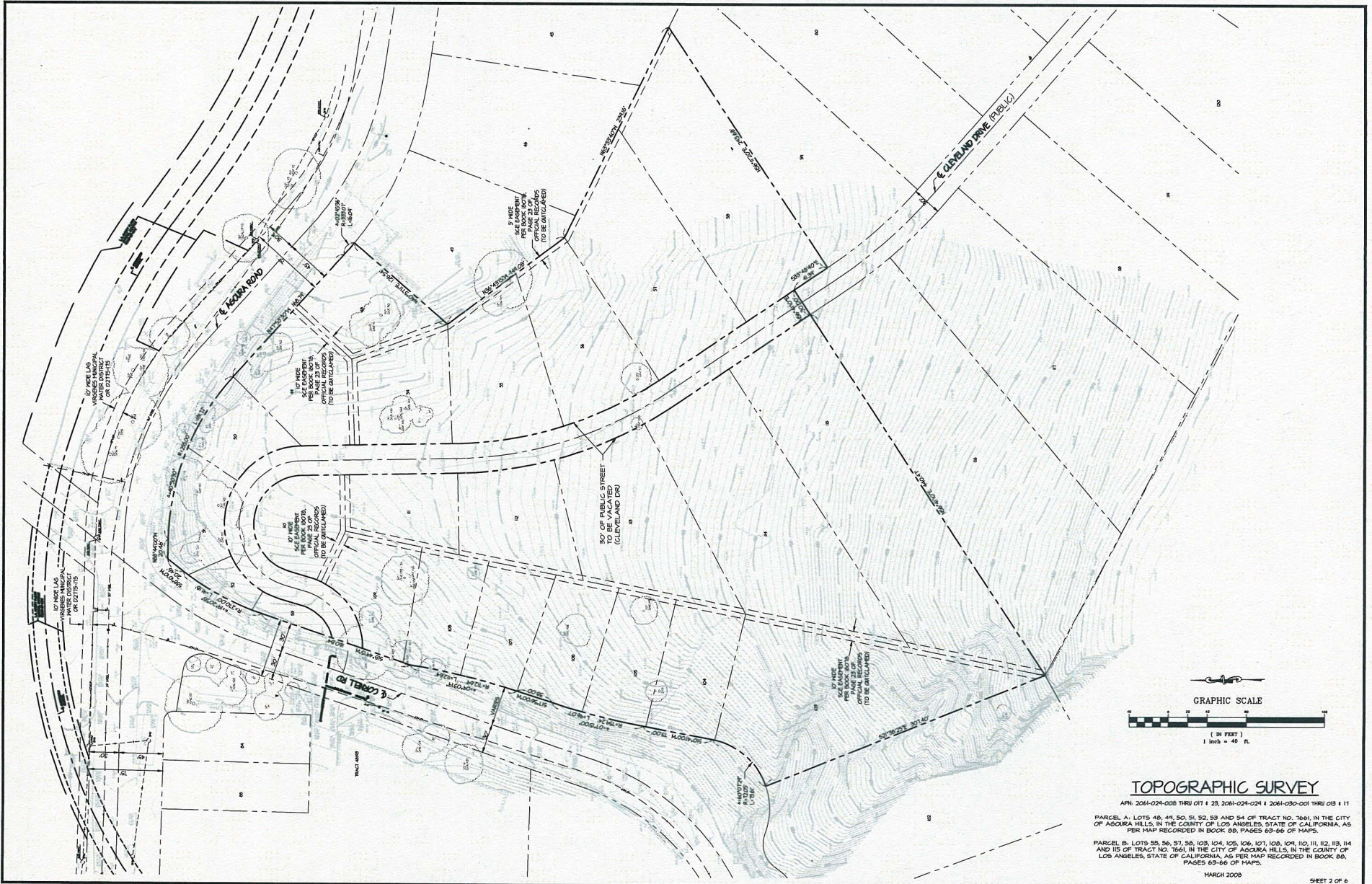
CITY OF AGOURA HILLS  
 COUNTY OF LOS ANGELES, STATE OF CALIFORNIA  
 PARCEL A: LOTS 46, 44, 50, 51, 52, 53 AND 54 OFF TRACT NO. 7646 IN THE CITY OF AGOURA HILLS, IN THE COUNTY OF LOS ANGELES, STATE OF CALIFORNIA, AS PER MAP RECORDED IN BOOK 88, PAGES 63-66 OF MAPS.  
 PARCEL B: LOTS 55, 56, 57, 58, 103, 104, 105, 106, 107, 108, 109, 110, 111, 112, 113, 114 AND 115 OF TRACT NO. 7646, IN THE CITY OF AGOURA HILLS, IN THE COUNTY OF LOS ANGELES, STATE OF CALIFORNIA, AS PER MAP RECORDED IN BOOK 88, PAGES 63-66 OF MAPS.



**ENGINEER**  
 DTR ENGINEERING  
 1619 HESA VERDE AVE, SUITE 150  
 VENTURA, CA 93003  
 805.676.5553

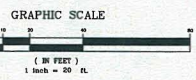
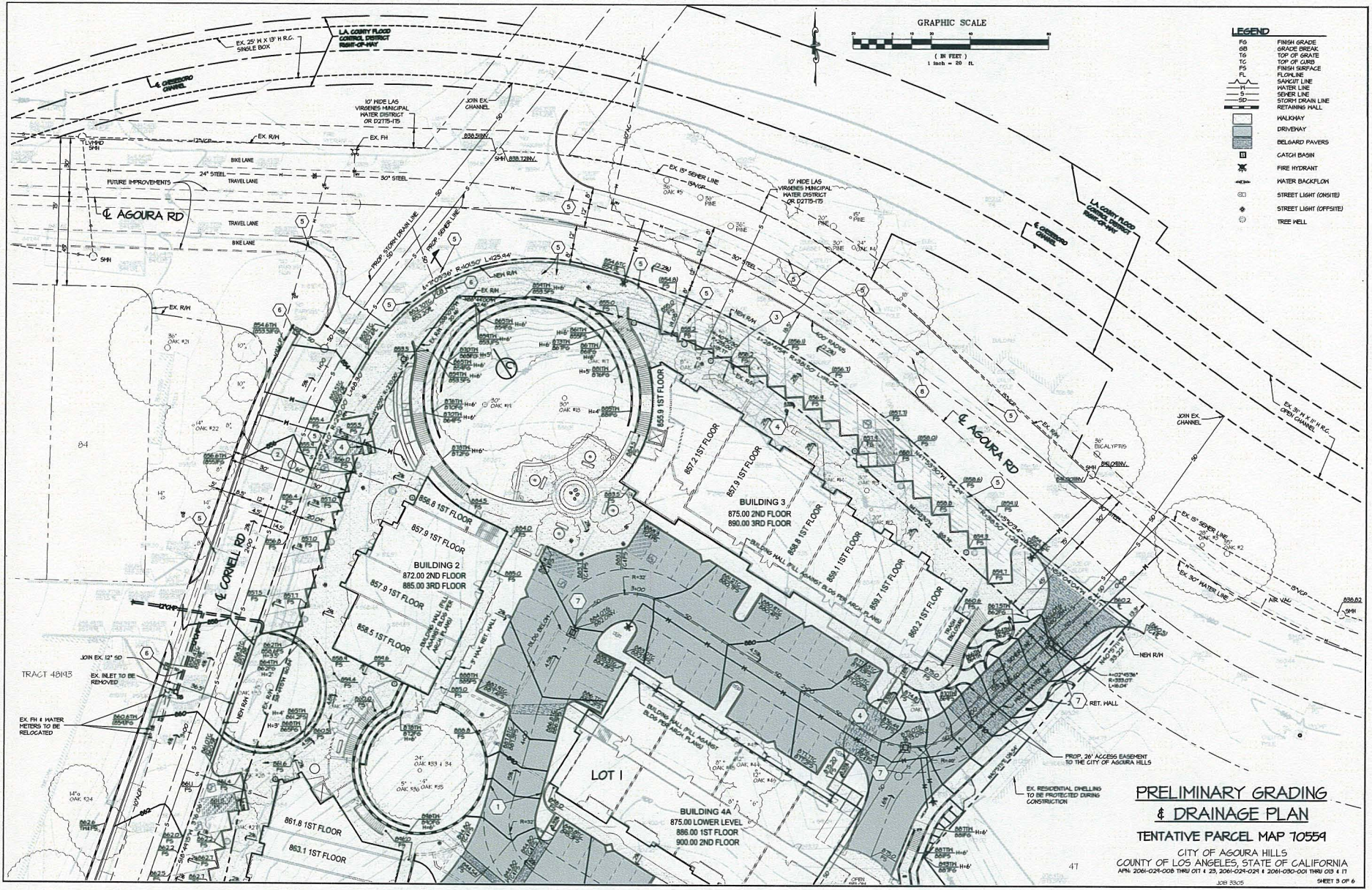
ISABELLA DO VAL SABELLE DATE  
 RCE 8824  
 EXP. 09/30/15





**TOPOGRAPHIC SURVEY**

APN: 2061-021-008 THRU 011 & 23, 2061-021-024 & 2061-030-001 THRU 013 & 11  
 PARCEL A: LOTS 48, 49, 50, 51, 52, 53 AND 54 OF TRACT NO. 7661, IN THE CITY OF AGOURA HILLS, IN THE COUNTY OF LOS ANGELES, STATE OF CALIFORNIA, AS PER MAP RECORDED IN BOOK 80, PAGES 63-66 OF MAPS.  
 PARCEL B: LOTS 55, 56, 57, 58, 103, 104, 105, 106, 107, 108, 109, 110, 111, 112, 113, 114 AND 115 OF TRACT NO. 7661, IN THE CITY OF AGOURA HILLS, IN THE COUNTY OF LOS ANGELES, STATE OF CALIFORNIA, AS PER MAP RECORDED IN BOOK 80, PAGES 63-66 OF MAPS.



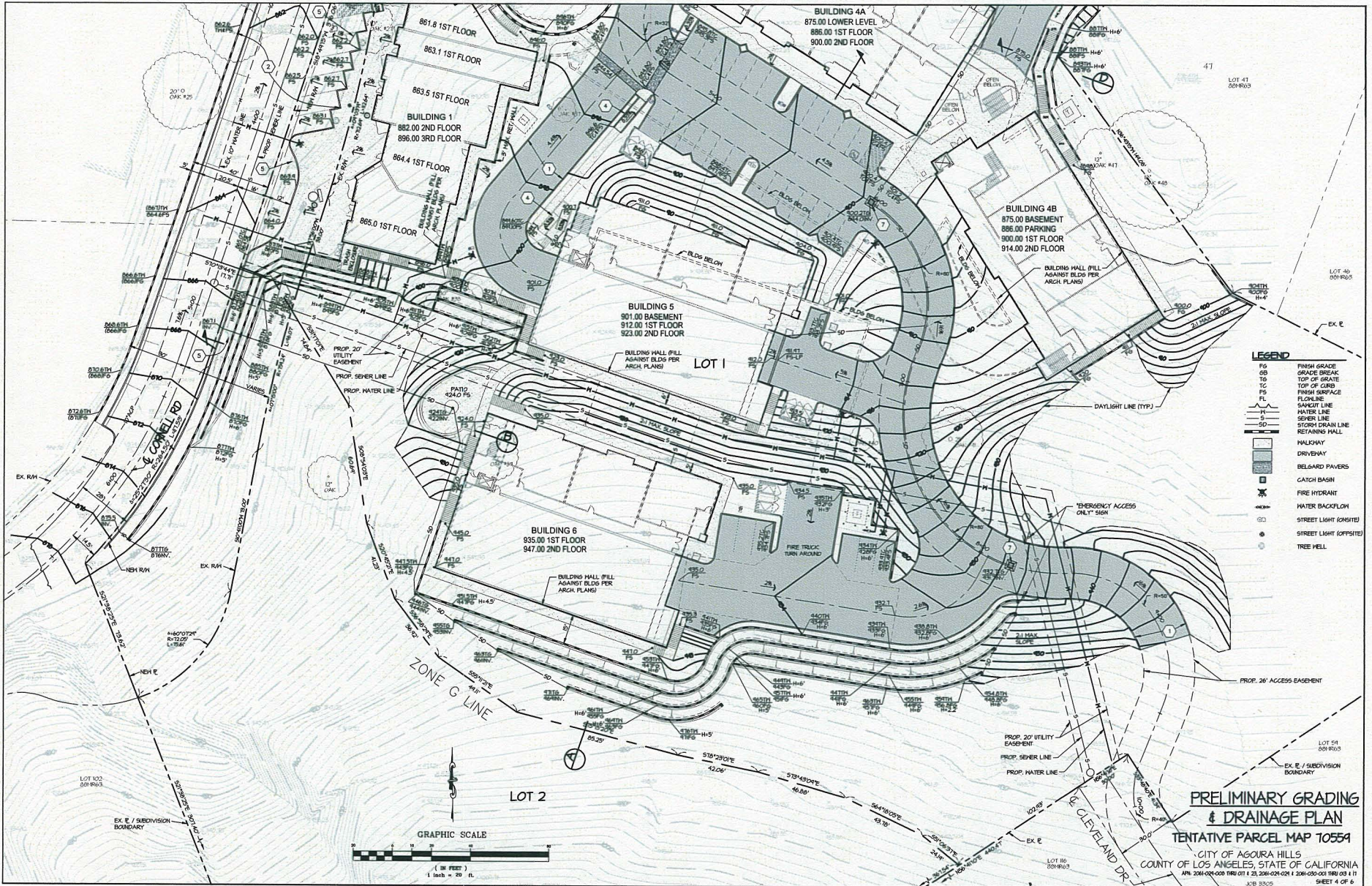
**LEGEND**

- FG FINISH GRADE
- OG GRADE BREAK
- TO TOP OF GRATE
- TC TOP OF CURB
- FS FINISH SURFACE
- FL FLOOR LINE
- SK SKIRT LINE
- WL WATER LINE
- SL SEWER LINE
- SD STORY DRAIN LINE
- RM RETAINING WALL
- HW WALKWAY
- DR DRIVEWAY
- BP BELGARD PAVERS
- CB CATCH BASIN
- FH FIRE HYDRANT
- WB WATER BACKFLOW
- SLT STREET LIGHT (ONSITE)
- SLT OFF STREET LIGHT (OFFSITE)
- TM TREE WELL

**PRELIMINARY GRADING  
& DRAINAGE PLAN**  
TENTATIVE PARCEL MAP 10554

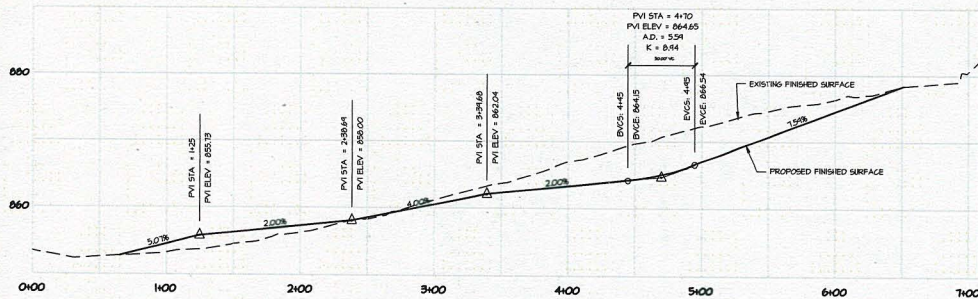
CITY OF AGOURA HILLS  
COUNTY OF LOS ANGELES, STATE OF CALIFORNIA  
APN 2061-001-008 TRSU 011 & 23, 2061-001-001 & 2061-001-003 TRSU 02 & 11

47

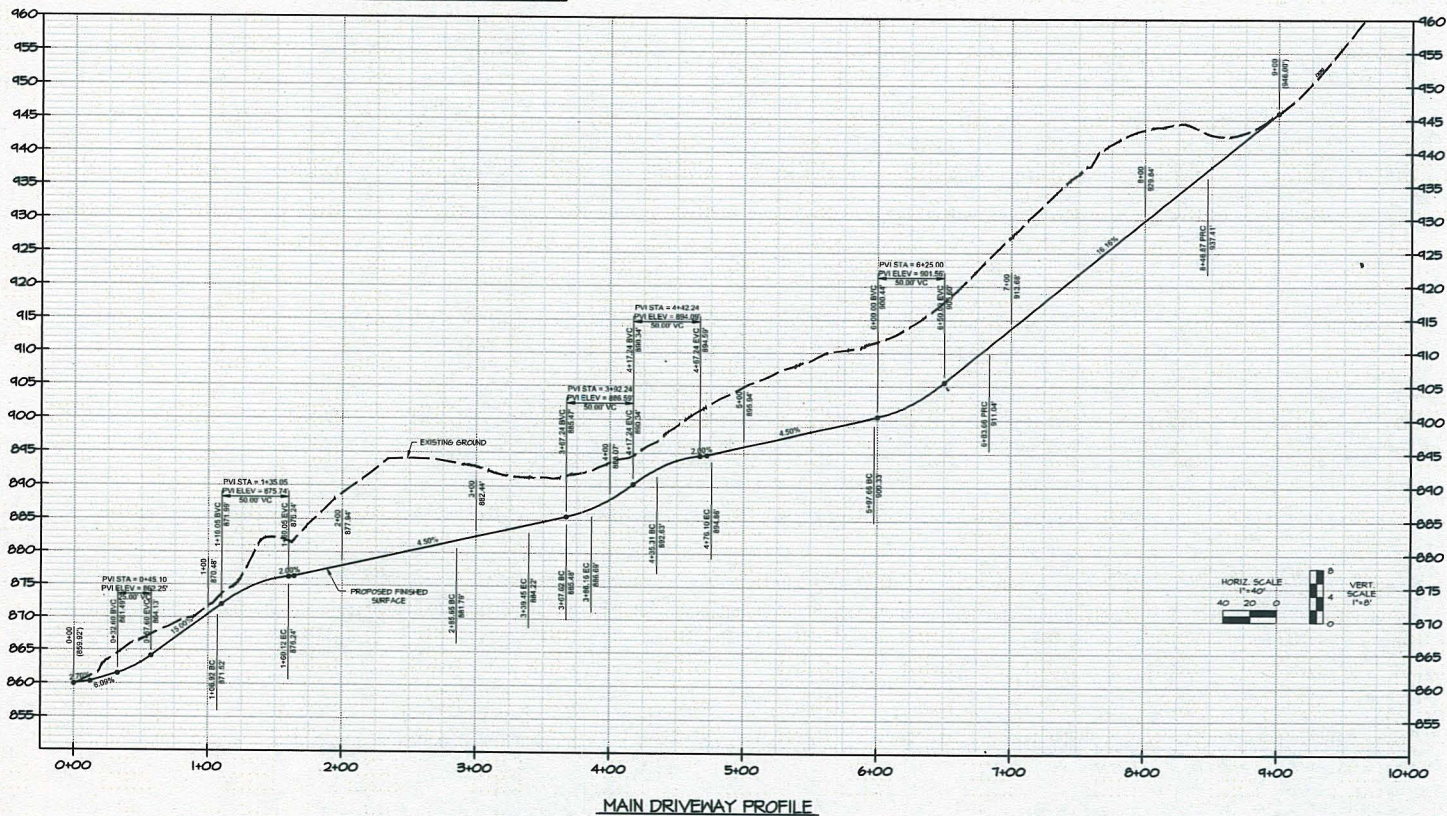


LEGEND	
FG	FINISH GRADE
GB	GRADE BREAK
TG	TOP OF GRATE
TC	TOP OF CURB
FS	FINISH SURFACE
FL	FLOORLINE
SL	SLICUT LINE
HL	HATER LINE
S	SEWER LINE
SD	STORM DRAIN LINE
RM	RETAINING WALL
□	HALCYWAY
□	DRIVEWAY
▨	BELGAARD PAVERS
☒	CATCH BASIN
⊕	FIRE HYDRANT
⊖	WATER BACKFLOW
⊗	STREET LIGHT (ON SITE)
⊗	STREET LIGHT (OFF SITE)
⊙	TREE WELL

**PRELIMINARY GRADING  
& DRAINAGE PLAN**  
**TENTATIVE PARCEL MAP 10559**  
 CITY OF AGOURA HILLS  
 COUNTY OF LOS ANGELES, STATE OF CALIFORNIA  
 APR 2004 00:00:00 THU 01 23 2004 00:00:00 1 2004 00:00:00 THU 01 23  
 JOB 3305  
 SHEET 4 OF 6



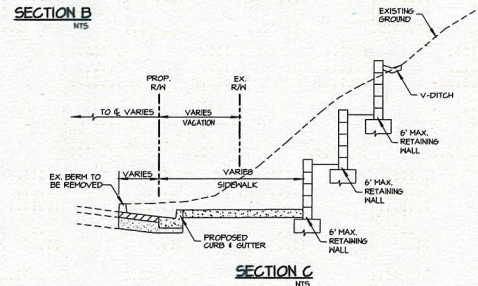
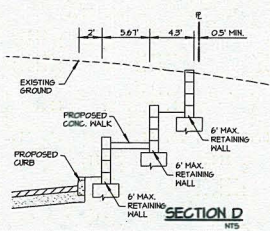
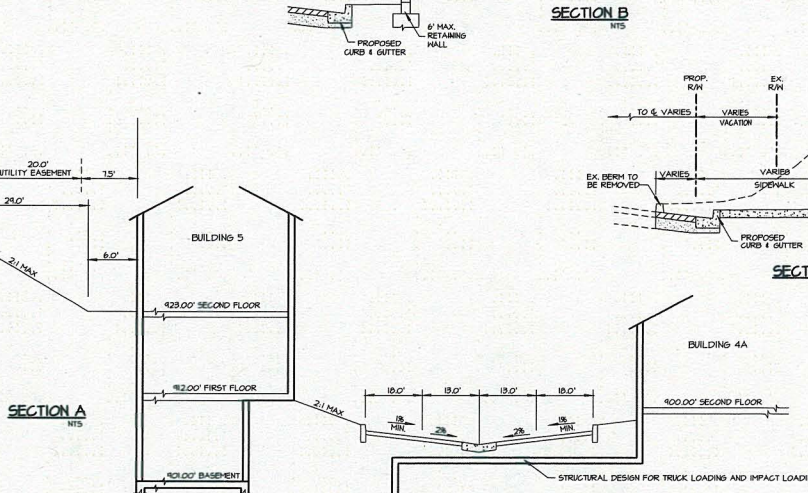
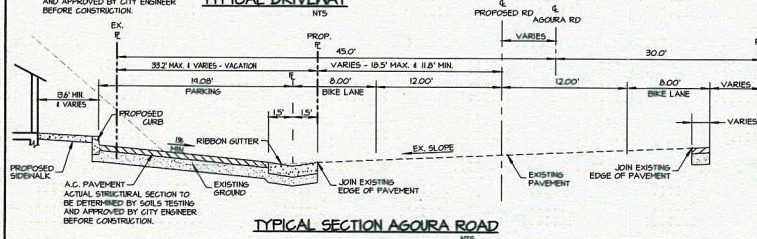
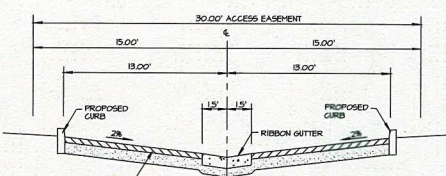
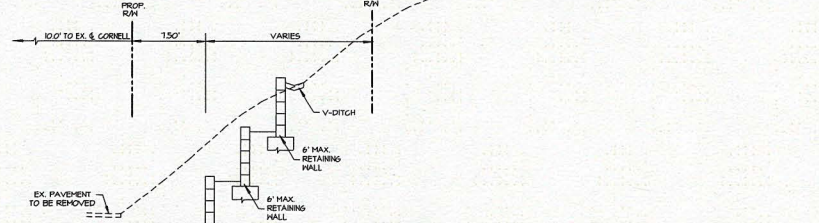
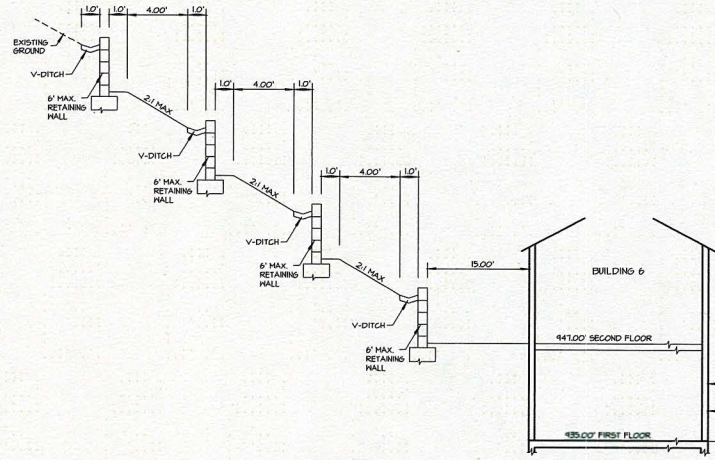
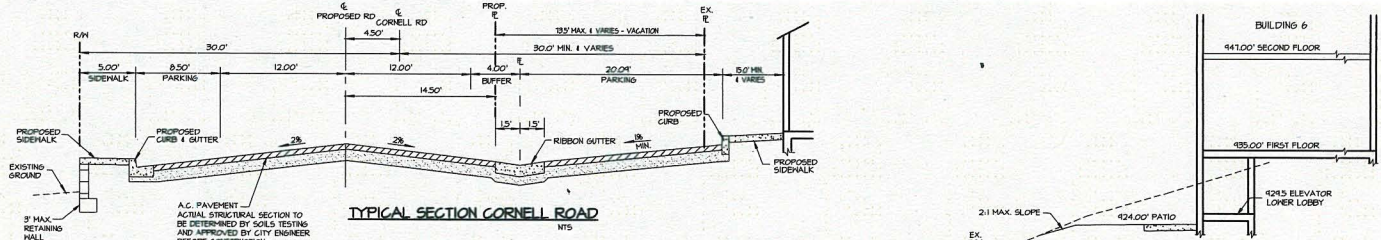
CORNELL ROAD PROFILE



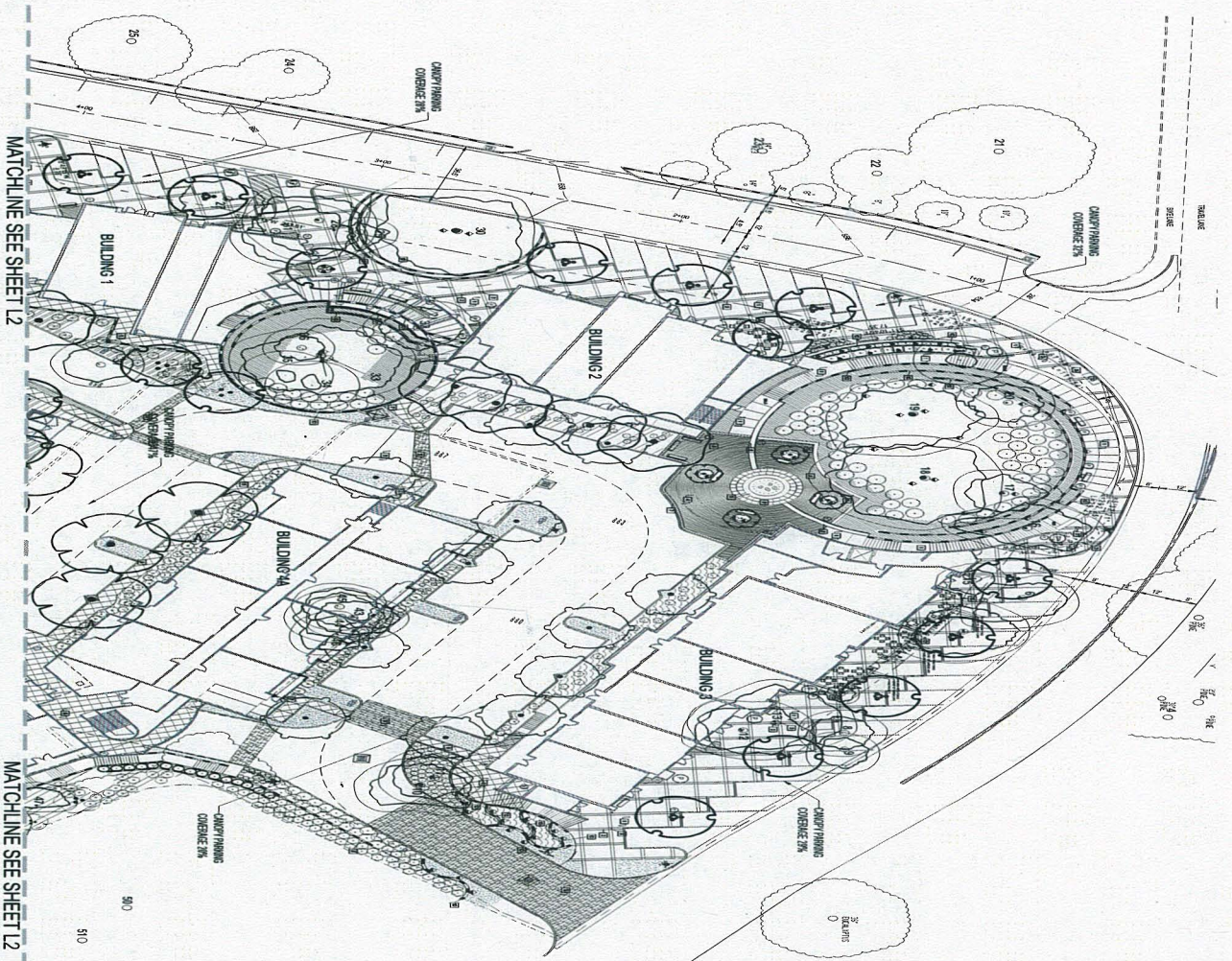
MAIN DRIVEWAY PROFILE

CORNELL ROAD &  
MAIN DRIVEWAY PROFILE  
TENTATIVE PARCEL MAP 10554

CITY OF AGOURA HILLS  
COUNTY OF LOS ANGELES, STATE OF CALIFORNIA  
APR. 2004-C24-CDD TRAC C11 & 23, 2004-C24-C24 & 2004-C20-C00 TRAC C13 & 17



**SECTIONS**  
**TENTATIVE PARCEL MAP 10551**  
CITY OF AGOURA HILLS  
COUNTY OF LOS ANGELES, STATE OF CALIFORNIA  
APN: 2061-024-000 THRU 024 23, 2061-024-024 1 2061-030-001 THRU 031 11  
JOB 3325 SHEET 6 OF 6

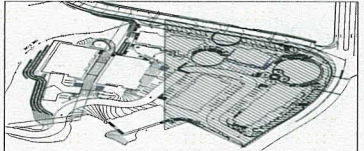


**LEGEND OF MATERIALS**

1	COLORED CONCRETE	8	REINFORCED CONCRETE
2	HYDROPHOBIC GRANITE	9	HYDROPHOBIC GRANITE
3	COLORED GRANITE	10	HYDROPHOBIC GRANITE
4	COLORED GRANITE	11	HYDROPHOBIC GRANITE
5	COLORED GRANITE	12	HYDROPHOBIC GRANITE
6	COLORED GRANITE		
7	COLORED GRANITE		

**LEGEND OF SYMBOLS**

[Symbol]	REINFORCED CONCRETE	[Symbol]	TRANSFER SERVICE
[Symbol]	PAVED DRIVE	[Symbol]	POI
[Symbol]	ASPHALT DRIVE	[Symbol]	LANDSCAPE LIGHTING
[Symbol]	LANDSCAPE LIGHTING	[Symbol]	TRAIL DRIVE
[Symbol]	TRAIL DRIVE	[Symbol]	TRAIL DRIVE
[Symbol]	TRAIL DRIVE	[Symbol]	TRAIL DRIVE



SCALE: 1"=20'-0"

WET SIGNATURE

NO. 1128

NO. 1128

NO. 1128

NO. 1128

L1 of 8

PRELIMINARY SITE PLAN

CORNERSTONE  
AGOURA ROAD, AGOURA HILLS, CALIFORNIA

NOT FOR CONSTRUCTION

DATE: 10/14/14

PROJECT: CORNERSTONE

9581 Lanning Drive, Suite 205  
Newbury Park, CA 91320  
805-898-9222

PRELIMINARY SITE PLAN [1 of 8]