

PROJECT NO.	
DATE	
SCALE	
DATE	

DATE	
SCALE	
DATE	

Professional Seal and Stamp
 State of California
 License No. 12345
 Exp. Date 12/31/2024
 Seal No. 12345
 Exp. Date 12/31/2024

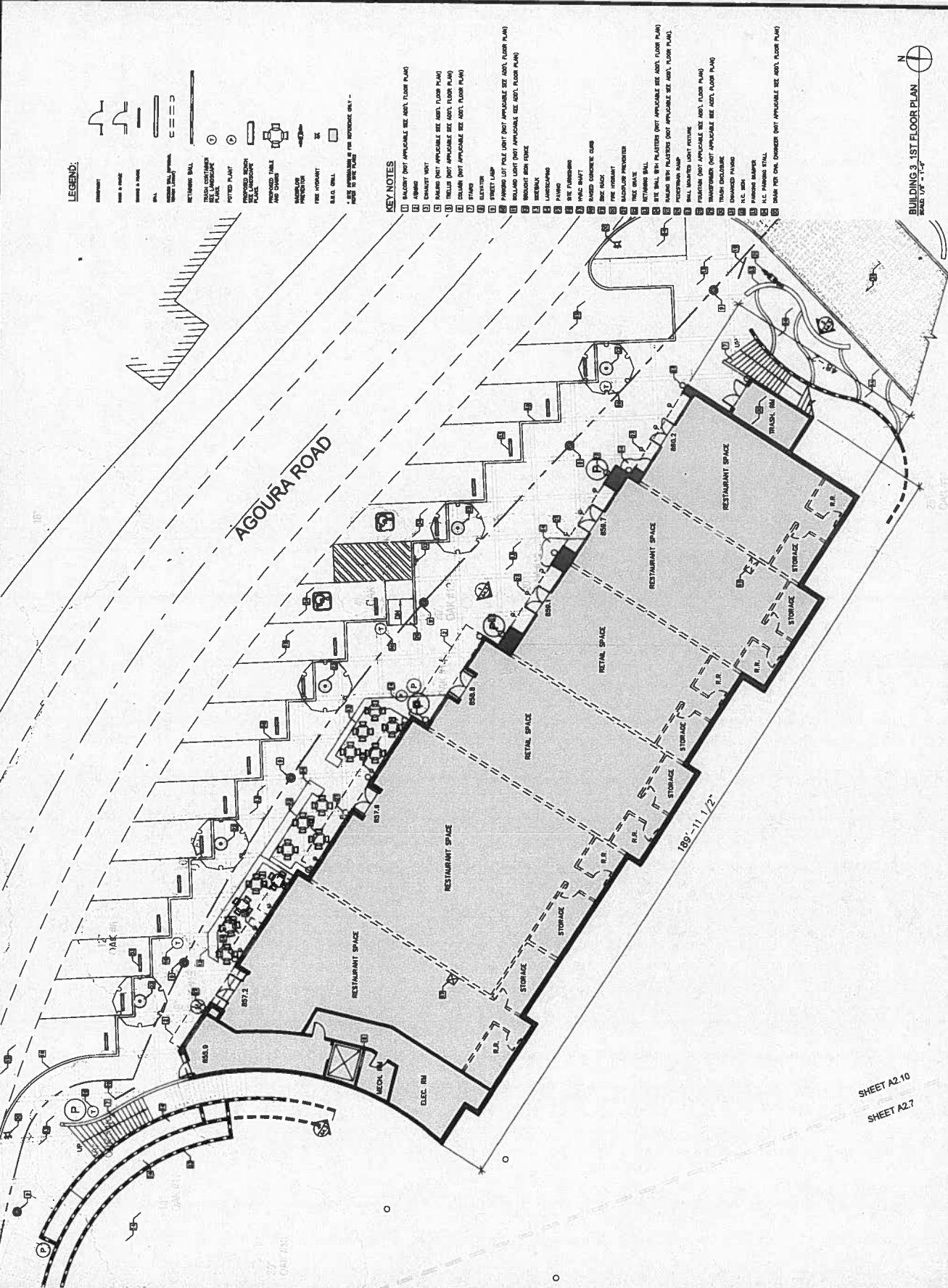
CORNERSTONE

AGOURA HILLS, CALIFORNIA



Heathcote
 Associates
 Architecture
 3398 Wilshire Blvd
 Suite 200
 Beverly Hills, CA 90210
 Phone 805-497-4700

A2.10



LEGEND:

- 1. HATCHING
- 2. WALL & WINDOW
- 3. WALL & DOOR
- 4. WALL
- 5. WINDOW
- 6. WINDOW
- 7. WINDOW
- 8. WINDOW
- 9. WINDOW
- 10. WINDOW
- 11. WINDOW
- 12. WINDOW
- 13. WINDOW
- 14. WINDOW
- 15. WINDOW
- 16. WINDOW
- 17. WINDOW
- 18. WINDOW
- 19. WINDOW
- 20. WINDOW
- 21. WINDOW
- 22. WINDOW
- 23. WINDOW
- 24. WINDOW
- 25. WINDOW
- 26. WINDOW
- 27. WINDOW
- 28. WINDOW
- 29. WINDOW
- 30. WINDOW
- 31. WINDOW
- 32. WINDOW
- 33. WINDOW
- 34. WINDOW
- 35. WINDOW
- 36. WINDOW
- 37. WINDOW
- 38. WINDOW
- 39. WINDOW
- 40. WINDOW
- 41. WINDOW
- 42. WINDOW
- 43. WINDOW
- 44. WINDOW
- 45. WINDOW
- 46. WINDOW
- 47. WINDOW
- 48. WINDOW
- 49. WINDOW
- 50. WINDOW
- 51. WINDOW
- 52. WINDOW
- 53. WINDOW
- 54. WINDOW
- 55. WINDOW
- 56. WINDOW
- 57. WINDOW
- 58. WINDOW
- 59. WINDOW
- 60. WINDOW
- 61. WINDOW
- 62. WINDOW
- 63. WINDOW
- 64. WINDOW
- 65. WINDOW
- 66. WINDOW
- 67. WINDOW
- 68. WINDOW
- 69. WINDOW
- 70. WINDOW
- 71. WINDOW
- 72. WINDOW
- 73. WINDOW
- 74. WINDOW
- 75. WINDOW
- 76. WINDOW
- 77. WINDOW
- 78. WINDOW
- 79. WINDOW
- 80. WINDOW
- 81. WINDOW
- 82. WINDOW
- 83. WINDOW
- 84. WINDOW
- 85. WINDOW
- 86. WINDOW
- 87. WINDOW
- 88. WINDOW
- 89. WINDOW
- 90. WINDOW
- 91. WINDOW
- 92. WINDOW
- 93. WINDOW
- 94. WINDOW
- 95. WINDOW
- 96. WINDOW
- 97. WINDOW
- 98. WINDOW
- 99. WINDOW
- 100. WINDOW

KEY NOTES

1. HATCHING (NOT APPLICABLE SEE ADJ. FLOOR PLAN)
2. HATCHING (NOT APPLICABLE SEE ADJ. FLOOR PLAN)
3. HATCHING (NOT APPLICABLE SEE ADJ. FLOOR PLAN)
4. HATCHING (NOT APPLICABLE SEE ADJ. FLOOR PLAN)
5. HATCHING (NOT APPLICABLE SEE ADJ. FLOOR PLAN)
6. HATCHING (NOT APPLICABLE SEE ADJ. FLOOR PLAN)
7. HATCHING (NOT APPLICABLE SEE ADJ. FLOOR PLAN)
8. HATCHING (NOT APPLICABLE SEE ADJ. FLOOR PLAN)
9. HATCHING (NOT APPLICABLE SEE ADJ. FLOOR PLAN)
10. HATCHING (NOT APPLICABLE SEE ADJ. FLOOR PLAN)
11. HATCHING (NOT APPLICABLE SEE ADJ. FLOOR PLAN)
12. HATCHING (NOT APPLICABLE SEE ADJ. FLOOR PLAN)
13. HATCHING (NOT APPLICABLE SEE ADJ. FLOOR PLAN)
14. HATCHING (NOT APPLICABLE SEE ADJ. FLOOR PLAN)
15. HATCHING (NOT APPLICABLE SEE ADJ. FLOOR PLAN)
16. HATCHING (NOT APPLICABLE SEE ADJ. FLOOR PLAN)
17. HATCHING (NOT APPLICABLE SEE ADJ. FLOOR PLAN)
18. HATCHING (NOT APPLICABLE SEE ADJ. FLOOR PLAN)
19. HATCHING (NOT APPLICABLE SEE ADJ. FLOOR PLAN)
20. HATCHING (NOT APPLICABLE SEE ADJ. FLOOR PLAN)
21. HATCHING (NOT APPLICABLE SEE ADJ. FLOOR PLAN)
22. HATCHING (NOT APPLICABLE SEE ADJ. FLOOR PLAN)
23. HATCHING (NOT APPLICABLE SEE ADJ. FLOOR PLAN)
24. HATCHING (NOT APPLICABLE SEE ADJ. FLOOR PLAN)
25. HATCHING (NOT APPLICABLE SEE ADJ. FLOOR PLAN)
26. HATCHING (NOT APPLICABLE SEE ADJ. FLOOR PLAN)
27. HATCHING (NOT APPLICABLE SEE ADJ. FLOOR PLAN)
28. HATCHING (NOT APPLICABLE SEE ADJ. FLOOR PLAN)
29. HATCHING (NOT APPLICABLE SEE ADJ. FLOOR PLAN)
30. HATCHING (NOT APPLICABLE SEE ADJ. FLOOR PLAN)
31. HATCHING (NOT APPLICABLE SEE ADJ. FLOOR PLAN)
32. HATCHING (NOT APPLICABLE SEE ADJ. FLOOR PLAN)
33. HATCHING (NOT APPLICABLE SEE ADJ. FLOOR PLAN)
34. HATCHING (NOT APPLICABLE SEE ADJ. FLOOR PLAN)
35. HATCHING (NOT APPLICABLE SEE ADJ. FLOOR PLAN)
36. HATCHING (NOT APPLICABLE SEE ADJ. FLOOR PLAN)
37. HATCHING (NOT APPLICABLE SEE ADJ. FLOOR PLAN)
38. HATCHING (NOT APPLICABLE SEE ADJ. FLOOR PLAN)
39. HATCHING (NOT APPLICABLE SEE ADJ. FLOOR PLAN)
40. HATCHING (NOT APPLICABLE SEE ADJ. FLOOR PLAN)
41. HATCHING (NOT APPLICABLE SEE ADJ. FLOOR PLAN)
42. HATCHING (NOT APPLICABLE SEE ADJ. FLOOR PLAN)
43. HATCHING (NOT APPLICABLE SEE ADJ. FLOOR PLAN)
44. HATCHING (NOT APPLICABLE SEE ADJ. FLOOR PLAN)
45. HATCHING (NOT APPLICABLE SEE ADJ. FLOOR PLAN)
46. HATCHING (NOT APPLICABLE SEE ADJ. FLOOR PLAN)
47. HATCHING (NOT APPLICABLE SEE ADJ. FLOOR PLAN)
48. HATCHING (NOT APPLICABLE SEE ADJ. FLOOR PLAN)
49. HATCHING (NOT APPLICABLE SEE ADJ. FLOOR PLAN)
50. HATCHING (NOT APPLICABLE SEE ADJ. FLOOR PLAN)
51. HATCHING (NOT APPLICABLE SEE ADJ. FLOOR PLAN)
52. HATCHING (NOT APPLICABLE SEE ADJ. FLOOR PLAN)
53. HATCHING (NOT APPLICABLE SEE ADJ. FLOOR PLAN)
54. HATCHING (NOT APPLICABLE SEE ADJ. FLOOR PLAN)
55. HATCHING (NOT APPLICABLE SEE ADJ. FLOOR PLAN)
56. HATCHING (NOT APPLICABLE SEE ADJ. FLOOR PLAN)
57. HATCHING (NOT APPLICABLE SEE ADJ. FLOOR PLAN)
58. HATCHING (NOT APPLICABLE SEE ADJ. FLOOR PLAN)
59. HATCHING (NOT APPLICABLE SEE ADJ. FLOOR PLAN)
60. HATCHING (NOT APPLICABLE SEE ADJ. FLOOR PLAN)
61. HATCHING (NOT APPLICABLE SEE ADJ. FLOOR PLAN)
62. HATCHING (NOT APPLICABLE SEE ADJ. FLOOR PLAN)
63. HATCHING (NOT APPLICABLE SEE ADJ. FLOOR PLAN)
64. HATCHING (NOT APPLICABLE SEE ADJ. FLOOR PLAN)
65. HATCHING (NOT APPLICABLE SEE ADJ. FLOOR PLAN)
66. HATCHING (NOT APPLICABLE SEE ADJ. FLOOR PLAN)
67. HATCHING (NOT APPLICABLE SEE ADJ. FLOOR PLAN)
68. HATCHING (NOT APPLICABLE SEE ADJ. FLOOR PLAN)
69. HATCHING (NOT APPLICABLE SEE ADJ. FLOOR PLAN)
70. HATCHING (NOT APPLICABLE SEE ADJ. FLOOR PLAN)
71. HATCHING (NOT APPLICABLE SEE ADJ. FLOOR PLAN)
72. HATCHING (NOT APPLICABLE SEE ADJ. FLOOR PLAN)
73. HATCHING (NOT APPLICABLE SEE ADJ. FLOOR PLAN)
74. HATCHING (NOT APPLICABLE SEE ADJ. FLOOR PLAN)
75. HATCHING (NOT APPLICABLE SEE ADJ. FLOOR PLAN)
76. HATCHING (NOT APPLICABLE SEE ADJ. FLOOR PLAN)
77. HATCHING (NOT APPLICABLE SEE ADJ. FLOOR PLAN)
78. HATCHING (NOT APPLICABLE SEE ADJ. FLOOR PLAN)
79. HATCHING (NOT APPLICABLE SEE ADJ. FLOOR PLAN)
80. HATCHING (NOT APPLICABLE SEE ADJ. FLOOR PLAN)
81. HATCHING (NOT APPLICABLE SEE ADJ. FLOOR PLAN)
82. HATCHING (NOT APPLICABLE SEE ADJ. FLOOR PLAN)
83. HATCHING (NOT APPLICABLE SEE ADJ. FLOOR PLAN)
84. HATCHING (NOT APPLICABLE SEE ADJ. FLOOR PLAN)
85. HATCHING (NOT APPLICABLE SEE ADJ. FLOOR PLAN)
86. HATCHING (NOT APPLICABLE SEE ADJ. FLOOR PLAN)
87. HATCHING (NOT APPLICABLE SEE ADJ. FLOOR PLAN)
88. HATCHING (NOT APPLICABLE SEE ADJ. FLOOR PLAN)
89. HATCHING (NOT APPLICABLE SEE ADJ. FLOOR PLAN)
90. HATCHING (NOT APPLICABLE SEE ADJ. FLOOR PLAN)
91. HATCHING (NOT APPLICABLE SEE ADJ. FLOOR PLAN)
92. HATCHING (NOT APPLICABLE SEE ADJ. FLOOR PLAN)
93. HATCHING (NOT APPLICABLE SEE ADJ. FLOOR PLAN)
94. HATCHING (NOT APPLICABLE SEE ADJ. FLOOR PLAN)
95. HATCHING (NOT APPLICABLE SEE ADJ. FLOOR PLAN)
96. HATCHING (NOT APPLICABLE SEE ADJ. FLOOR PLAN)
97. HATCHING (NOT APPLICABLE SEE ADJ. FLOOR PLAN)
98. HATCHING (NOT APPLICABLE SEE ADJ. FLOOR PLAN)
99. HATCHING (NOT APPLICABLE SEE ADJ. FLOOR PLAN)
100. HATCHING (NOT APPLICABLE SEE ADJ. FLOOR PLAN)

BUILDING 3, 1ST FLOOR PLAN
 SCALE 1/4" = 1'-0"

BUILDING FLOOR PLAN-7

SHEET A2.10
 SHEET A2.7

PLANT HARD 1/1/2024 12:30 PM FILE NAME: A2.10_A2.7_A2.8_A2.9_A2.10_A2.11_A2.12

REVISIONS

DATE: 11/22/2013
BY: [Signature]
APP: [Signature]
SCALE: 1/8" = 1'-0"

THIS DOCUMENT IS THE PROPERTY OF HEATHCOFFEE ARCHITECTURE. IT IS TO BE USED ONLY FOR THE PROJECT AND SITE SPECIFICALLY IDENTIFIED HEREIN. IT IS NOT TO BE REPRODUCED, COPIED, OR TRANSMITTED IN ANY FORM OR BY ANY MEANS, ELECTRONIC OR MECHANICAL, INCLUDING PHOTOCOPYING, RECORDING, OR BY ANY INFORMATION STORAGE AND RETRIEVAL SYSTEM, WITHOUT THE WRITTEN PERMISSION OF HEATHCOFFEE ARCHITECTURE. ANY UNAUTHORIZED USE OF THIS DOCUMENT IS STRICTLY PROHIBITED. HEATHCOFFEE ARCHITECTURE ASSUMES NO LIABILITY FOR ANY DAMAGE, INCLUDING CONSEQUENTIAL DAMAGES, ARISING FROM THE USE OF THIS DOCUMENT.

CORNERSTONE

MONTEBELLO, CALIFORNIA



Heathcoffe
Architecture
3080 Wilton Lane
Suite 200
Montebello, California 90640
Phone 800-487-1700

A2.18

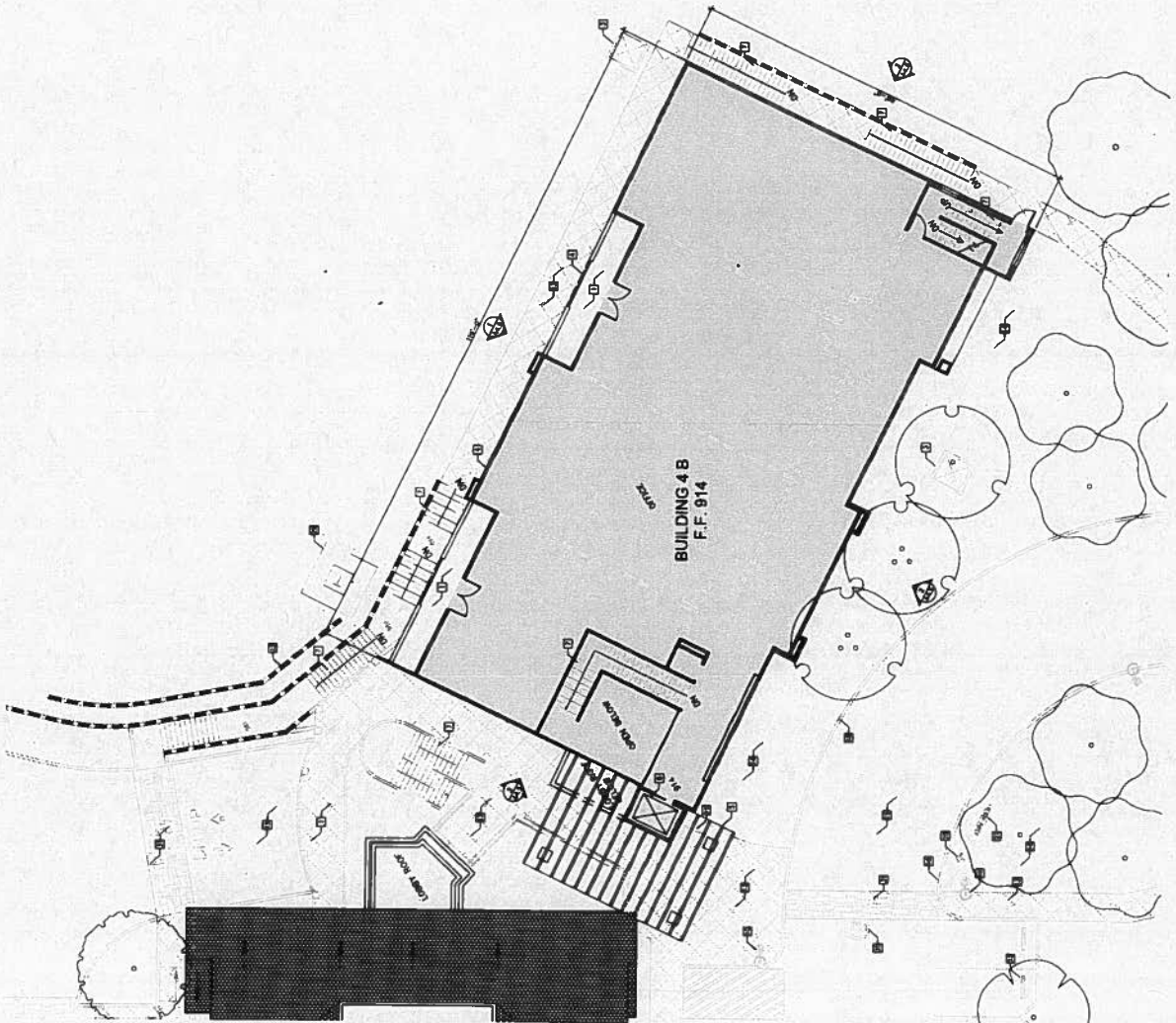
LEGEND:

- 1. RETAINING WALL
- 2. RETAINING WALL WITH FINISH
- 3. RETAINING WALL WITH FINISH AND CURB
- 4. RETAINING WALL WITH FINISH AND CURB AND SLOPE
- 5. RETAINING WALL WITH FINISH AND CURB AND SLOPE AND LIGHT
- 6. RETAINING WALL WITH FINISH AND CURB AND SLOPE AND LIGHT AND PLANT
- 7. RETAINING WALL WITH FINISH AND CURB AND SLOPE AND LIGHT AND PLANT AND FENCE
- 8. RETAINING WALL WITH FINISH AND CURB AND SLOPE AND LIGHT AND PLANT AND FENCE AND LIGHT
- 9. RETAINING WALL WITH FINISH AND CURB AND SLOPE AND LIGHT AND PLANT AND FENCE AND LIGHT AND PLANT
- 10. RETAINING WALL WITH FINISH AND CURB AND SLOPE AND LIGHT AND PLANT AND FENCE AND LIGHT AND PLANT AND FENCE
- 11. RETAINING WALL WITH FINISH AND CURB AND SLOPE AND LIGHT AND PLANT AND FENCE AND LIGHT AND PLANT AND FENCE AND LIGHT
- 12. RETAINING WALL WITH FINISH AND CURB AND SLOPE AND LIGHT AND PLANT AND FENCE AND LIGHT AND PLANT AND FENCE AND LIGHT AND PLANT
- 13. RETAINING WALL WITH FINISH AND CURB AND SLOPE AND LIGHT AND PLANT AND FENCE AND LIGHT AND PLANT AND FENCE AND LIGHT AND PLANT AND FENCE
- 14. RETAINING WALL WITH FINISH AND CURB AND SLOPE AND LIGHT AND PLANT AND FENCE AND LIGHT AND PLANT AND FENCE AND LIGHT AND PLANT AND FENCE AND LIGHT
- 15. RETAINING WALL WITH FINISH AND CURB AND SLOPE AND LIGHT AND PLANT AND FENCE AND LIGHT AND PLANT AND FENCE AND LIGHT AND PLANT AND FENCE AND LIGHT AND PLANT
- 16. RETAINING WALL WITH FINISH AND CURB AND SLOPE AND LIGHT AND PLANT AND FENCE AND LIGHT AND PLANT AND FENCE AND LIGHT AND PLANT AND FENCE AND LIGHT AND PLANT AND FENCE
- 17. RETAINING WALL WITH FINISH AND CURB AND SLOPE AND LIGHT AND PLANT AND FENCE AND LIGHT AND PLANT AND FENCE AND LIGHT AND PLANT AND FENCE AND LIGHT AND PLANT AND FENCE AND LIGHT
- 18. RETAINING WALL WITH FINISH AND CURB AND SLOPE AND LIGHT AND PLANT AND FENCE AND LIGHT AND PLANT AND FENCE AND LIGHT AND PLANT AND FENCE AND LIGHT AND PLANT AND FENCE AND LIGHT AND PLANT
- 19. RETAINING WALL WITH FINISH AND CURB AND SLOPE AND LIGHT AND PLANT AND FENCE AND LIGHT AND PLANT AND FENCE AND LIGHT AND PLANT AND FENCE AND LIGHT AND PLANT AND FENCE AND LIGHT AND PLANT AND FENCE
- 20. RETAINING WALL WITH FINISH AND CURB AND SLOPE AND LIGHT AND PLANT AND FENCE AND LIGHT AND PLANT AND FENCE AND LIGHT AND PLANT AND FENCE AND LIGHT AND PLANT AND FENCE AND LIGHT AND PLANT AND FENCE AND LIGHT

KEY NOTES

- 1. FINISH (NOT APPLICABLE SEE ARCH. FLOOR PLAN)
- 2. FINISH (NOT APPLICABLE SEE ARCH. FLOOR PLAN)
- 3. FINISH (NOT APPLICABLE SEE ARCH. FLOOR PLAN)
- 4. FINISH (NOT APPLICABLE SEE ARCH. FLOOR PLAN)
- 5. FINISH (NOT APPLICABLE SEE ARCH. FLOOR PLAN)
- 6. FINISH (NOT APPLICABLE SEE ARCH. FLOOR PLAN)
- 7. FINISH (NOT APPLICABLE SEE ARCH. FLOOR PLAN)
- 8. FINISH (NOT APPLICABLE SEE ARCH. FLOOR PLAN)
- 9. FINISH (NOT APPLICABLE SEE ARCH. FLOOR PLAN)
- 10. FINISH (NOT APPLICABLE SEE ARCH. FLOOR PLAN)
- 11. FINISH (NOT APPLICABLE SEE ARCH. FLOOR PLAN)
- 12. FINISH (NOT APPLICABLE SEE ARCH. FLOOR PLAN)
- 13. FINISH (NOT APPLICABLE SEE ARCH. FLOOR PLAN)
- 14. FINISH (NOT APPLICABLE SEE ARCH. FLOOR PLAN)
- 15. FINISH (NOT APPLICABLE SEE ARCH. FLOOR PLAN)
- 16. FINISH (NOT APPLICABLE SEE ARCH. FLOOR PLAN)
- 17. FINISH (NOT APPLICABLE SEE ARCH. FLOOR PLAN)
- 18. FINISH (NOT APPLICABLE SEE ARCH. FLOOR PLAN)
- 19. FINISH (NOT APPLICABLE SEE ARCH. FLOOR PLAN)
- 20. FINISH (NOT APPLICABLE SEE ARCH. FLOOR PLAN)
- 21. FINISH (NOT APPLICABLE SEE ARCH. FLOOR PLAN)
- 22. FINISH (NOT APPLICABLE SEE ARCH. FLOOR PLAN)
- 23. FINISH (NOT APPLICABLE SEE ARCH. FLOOR PLAN)
- 24. FINISH (NOT APPLICABLE SEE ARCH. FLOOR PLAN)
- 25. FINISH (NOT APPLICABLE SEE ARCH. FLOOR PLAN)
- 26. FINISH (NOT APPLICABLE SEE ARCH. FLOOR PLAN)
- 27. FINISH (NOT APPLICABLE SEE ARCH. FLOOR PLAN)
- 28. FINISH (NOT APPLICABLE SEE ARCH. FLOOR PLAN)
- 29. FINISH (NOT APPLICABLE SEE ARCH. FLOOR PLAN)
- 30. FINISH (NOT APPLICABLE SEE ARCH. FLOOR PLAN)
- 31. FINISH (NOT APPLICABLE SEE ARCH. FLOOR PLAN)
- 32. FINISH (NOT APPLICABLE SEE ARCH. FLOOR PLAN)
- 33. FINISH (NOT APPLICABLE SEE ARCH. FLOOR PLAN)
- 34. FINISH (NOT APPLICABLE SEE ARCH. FLOOR PLAN)
- 35. FINISH (NOT APPLICABLE SEE ARCH. FLOOR PLAN)
- 36. FINISH (NOT APPLICABLE SEE ARCH. FLOOR PLAN)
- 37. FINISH (NOT APPLICABLE SEE ARCH. FLOOR PLAN)
- 38. FINISH (NOT APPLICABLE SEE ARCH. FLOOR PLAN)
- 39. FINISH (NOT APPLICABLE SEE ARCH. FLOOR PLAN)
- 40. FINISH (NOT APPLICABLE SEE ARCH. FLOOR PLAN)
- 41. FINISH (NOT APPLICABLE SEE ARCH. FLOOR PLAN)
- 42. FINISH (NOT APPLICABLE SEE ARCH. FLOOR PLAN)
- 43. FINISH (NOT APPLICABLE SEE ARCH. FLOOR PLAN)
- 44. FINISH (NOT APPLICABLE SEE ARCH. FLOOR PLAN)
- 45. FINISH (NOT APPLICABLE SEE ARCH. FLOOR PLAN)
- 46. FINISH (NOT APPLICABLE SEE ARCH. FLOOR PLAN)
- 47. FINISH (NOT APPLICABLE SEE ARCH. FLOOR PLAN)
- 48. FINISH (NOT APPLICABLE SEE ARCH. FLOOR PLAN)
- 49. FINISH (NOT APPLICABLE SEE ARCH. FLOOR PLAN)
- 50. FINISH (NOT APPLICABLE SEE ARCH. FLOOR PLAN)

BUILDING 4B - 2nd FLOOR PLAN
SCALE: 1/8" = 1'-0"



BUILDING FLOOR PLAN - 15

PLAT MARK: 11/22/2013 15:18:19 PM FILE NAME: A2.18.FLOOR PLAN.AIAA_2013.DWG

DATE	1/17/2005
SCALE	AS SHOWN
PROJECT	
CLIENT	
ARCHITECT	
ENGINEER	
PLANNING	
LANDSCAPE	
INTERIOR	
EXTERIOR	
MECHANICAL	
ELECTRICAL	
PLUMBING	
HAZARDOUS WASTE	
ENVIRONMENTAL	
ARCHITECTURAL HISTORY	
ARCHITECTURAL RECORDING	
ARCHITECTURAL REPAIR	
ARCHITECTURAL RESTORATION	
ARCHITECTURAL PRESERVATION	
ARCHITECTURAL MONITORING	
ARCHITECTURAL ASSESSMENT	
ARCHITECTURAL CONSULTING	
ARCHITECTURAL SERVICES	
ARCHITECTURAL DESIGN	
ARCHITECTURAL DRAWING	
ARCHITECTURAL RENDERING	
ARCHITECTURAL PHOTOGRAPHY	
ARCHITECTURAL VIDEOGRAPHY	
ARCHITECTURAL MODELING	
ARCHITECTURAL ANIMATION	
ARCHITECTURAL VIRTUAL REALITY	
ARCHITECTURAL GAMING	
ARCHITECTURAL SIMULATION	
ARCHITECTURAL ANALYSIS	
ARCHITECTURAL RESEARCH	
ARCHITECTURAL WRITING	
ARCHITECTURAL EDITING	
ARCHITECTURAL PRODUCTION	
ARCHITECTURAL DISTRIBUTION	
ARCHITECTURAL MARKETING	
ARCHITECTURAL SALES	
ARCHITECTURAL SUPPORT	
ARCHITECTURAL TRAINING	
ARCHITECTURAL CONSULTING	
ARCHITECTURAL SERVICES	
ARCHITECTURAL DESIGN	
ARCHITECTURAL DRAWING	
ARCHITECTURAL RENDERING	
ARCHITECTURAL PHOTOGRAPHY	
ARCHITECTURAL VIDEOGRAPHY	
ARCHITECTURAL MODELING	
ARCHITECTURAL ANIMATION	
ARCHITECTURAL VIRTUAL REALITY	
ARCHITECTURAL GAMING	
ARCHITECTURAL SIMULATION	
ARCHITECTURAL ANALYSIS	
ARCHITECTURAL RESEARCH	
ARCHITECTURAL WRITING	
ARCHITECTURAL EDITING	
ARCHITECTURAL PRODUCTION	
ARCHITECTURAL DISTRIBUTION	
ARCHITECTURAL MARKETING	
ARCHITECTURAL SALES	
ARCHITECTURAL SUPPORT	
ARCHITECTURAL TRAINING	

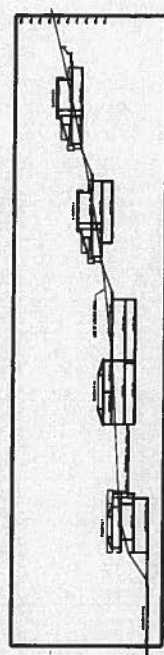
THE ARCHITECT HAS PREPARED THIS PLAN SET FOR THE ARCHITECT'S USE ONLY. IT IS NOT TO BE USED FOR ANY OTHER PURPOSE WITHOUT THE WRITTEN CONSENT OF THE ARCHITECT. THE ARCHITECT ASSUMES NO LIABILITY FOR ANY ERRORS OR OMISSIONS IN THIS PLAN SET. THE ARCHITECT IS NOT RESPONSIBLE FOR ANY CONSTRUCTION DEFECTS OR OTHER PROBLEMS THAT MAY OCCUR DURING THE CONSTRUCTION OF THE PROJECT. THE ARCHITECT IS NOT RESPONSIBLE FOR ANY CHANGES TO THE PROJECT THAT ARE NOT SHOWN ON THIS PLAN SET. THE ARCHITECT IS NOT RESPONSIBLE FOR ANY DELAYS TO THE PROJECT THAT ARE NOT CAUSED BY THE ARCHITECT. THE ARCHITECT IS NOT RESPONSIBLE FOR ANY COST OVER RUNS OR OTHER FINANCIAL PROBLEMS THAT MAY OCCUR DURING THE CONSTRUCTION OF THE PROJECT. THE ARCHITECT IS NOT RESPONSIBLE FOR ANY LEGAL PROBLEMS THAT MAY OCCUR DURING THE CONSTRUCTION OF THE PROJECT. THE ARCHITECT IS NOT RESPONSIBLE FOR ANY OTHER PROBLEMS THAT MAY OCCUR DURING THE CONSTRUCTION OF THE PROJECT.

CORNERSTONE
 AGOURA ROAD
 AGOURA HILLS, CALIFORNIA

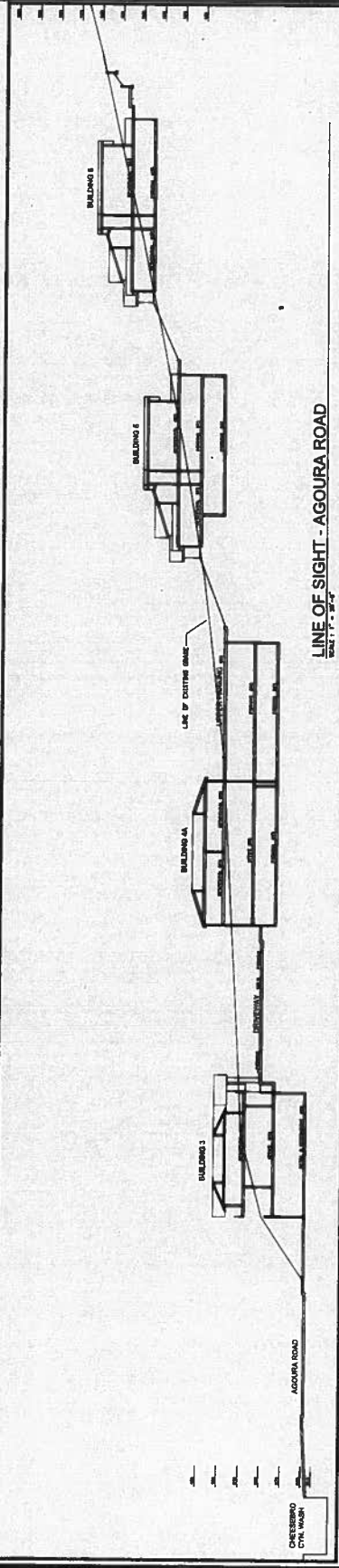


Hearthcote
 Architecture
 3398 Wilcox Lane
 San Diego, CA 92108
 Phone 619-497-1700

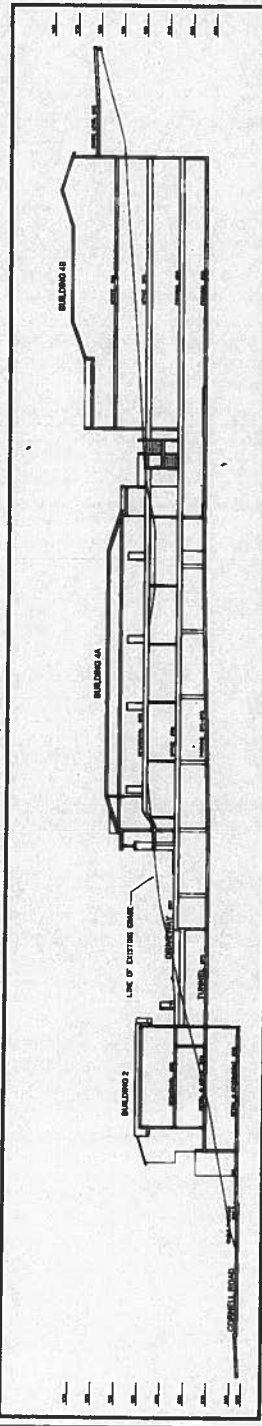
A5.0
 SHEET NO.



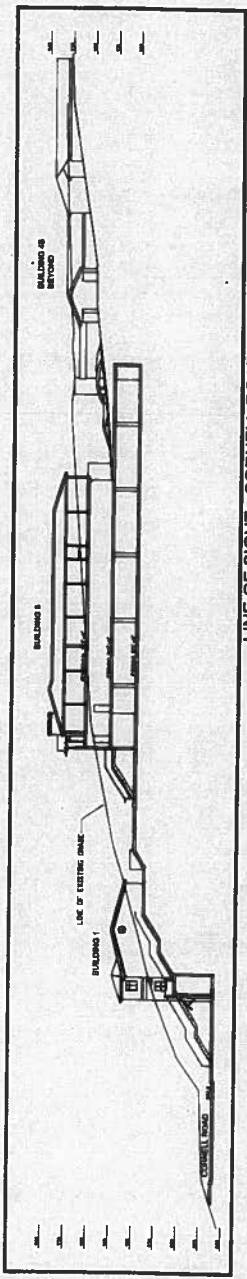
LINE OF SIGHT - 101 FREEWAY
 SHEET A5.0



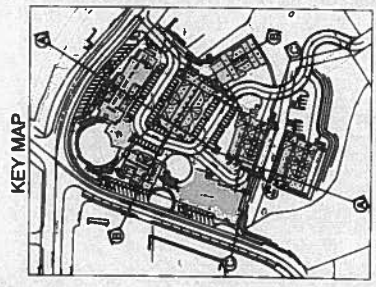
LINE OF SIGHT - AGOURA ROAD
 SHEET A5.0



LINE OF SIGHT - CORNELL ROAD
 SHEET A5.0



LINE OF SIGHT - CORNELL ROAD
 SHEET A5.0



PLAT DATE: 1/22/2005 10:27 AM FILE NAME: A5.0.DWG

REVISIONS

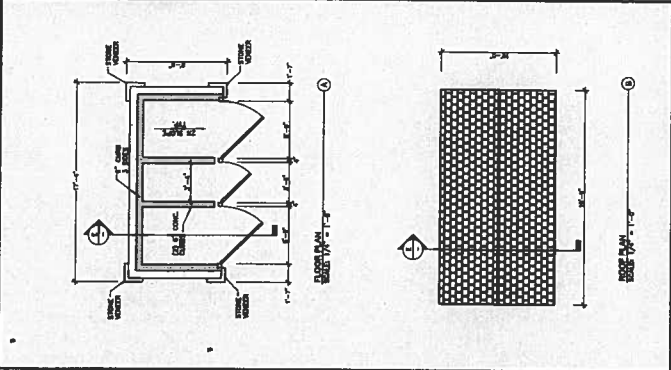
THIS DRAWING IS THE PROPERTY OF HEATHCOFFEE ARCHITECTURE. IT IS TO BE USED ONLY FOR THE PROJECT AND SITE SPECIFICALLY IDENTIFIED HEREON. IT IS NOT TO BE REPRODUCED, COPIED, REPRODUCED, OR TRANSMITTED IN ANY FORM OR BY ANY MEANS, ELECTRONIC OR MECHANICAL, INCLUDING PHOTOCOPYING, RECORDING, OR BY ANY INFORMATION STORAGE AND RETRIEVAL SYSTEM, WITHOUT THE WRITTEN PERMISSION OF HEATHCOFFEE ARCHITECTURE. ANY UNAUTHORIZED USE OF THIS DRAWING IS STRICTLY PROHIBITED. HEATHCOFFEE ARCHITECTURE SHALL BE RESPONSIBLE FOR THE ACCURACY OF THE INFORMATION PROVIDED HEREON. THE USER OF THIS DRAWING SHALL BE RESPONSIBLE FOR OBTAINING ALL NECESSARY PERMITS AND APPROVALS FROM THE APPROPRIATE AGENCIES. HEATHCOFFEE ARCHITECTURE SHALL NOT BE RESPONSIBLE FOR ANY CONSEQUENCES ARISING FROM THE USE OF THIS DRAWING.

CORNERSTONE
ADORNIA HILLS CALIFORNIA
ADORNIA ROAD



Heathcoffe Architecture
3.036 White Lane
Westlake, CA 91371
Phone: 805-401-1100
Fax: 805-401-1100

PROJECT
A6.0
TRASH ENCLOSURE



TYPICAL FLOOR PLAN & ROOF PLAN

COLOR MATERIAL SCHEDULE	
KEYNOTES:	<ul style="list-style-type: none"> ① - SEE KEYNOTES ② - SEE KEYNOTES ③ - SEE KEYNOTES
MATERIALS:	<ul style="list-style-type: none"> ① - CONCRETE ② - METAL ③ - WOOD ④ - PAINT ⑤ - GLASS ⑥ - INSULATION ⑦ - ROOFING ⑧ - FINISH
COLOR FINISHES:	<ul style="list-style-type: none"> ① - WHITE ② - TAN ③ - BROWN ④ - GREEN ⑤ - BLUE ⑥ - RED ⑦ - PURPLE ⑧ - PINK ⑨ - YELLOW ⑩ - ORANGE ⑪ - BLACK ⑫ - GREY ⑬ - SILVER ⑭ - GOLD ⑮ - COPPER ⑯ - BRASS ⑰ - ALUMINUM ⑱ - STAINLESS STEEL ⑲ - ENAMEL ⑳ - POLYURETHANE ㉑ - EPOXY ㉒ - ACRYLIC ㉓ - VINYL ㉔ - CERAMIC ㉕ - MARBLE ㉖ - GRANITE ㉗ - SLATE ㉘ - TERRAZZO ㉙ - TERRAZZO ㉚ - TERRAZZO ㉛ - TERRAZZO ㉜ - TERRAZZO ㉝ - TERRAZZO ㉞ - TERRAZZO ㉟ - TERRAZZO ㊱ - TERRAZZO ㊲ - TERRAZZO ㊳ - TERRAZZO ㊴ - TERRAZZO ㊵ - TERRAZZO ㊶ - TERRAZZO ㊷ - TERRAZZO ㊸ - TERRAZZO ㊹ - TERRAZZO ㊺ - TERRAZZO ㊻ - TERRAZZO ㊼ - TERRAZZO ㊽ - TERRAZZO ㊾ - TERRAZZO ㊿ - TERRAZZO

NOTE: ALL METAL TO BE GALVANIZED AND PAINTED.

