

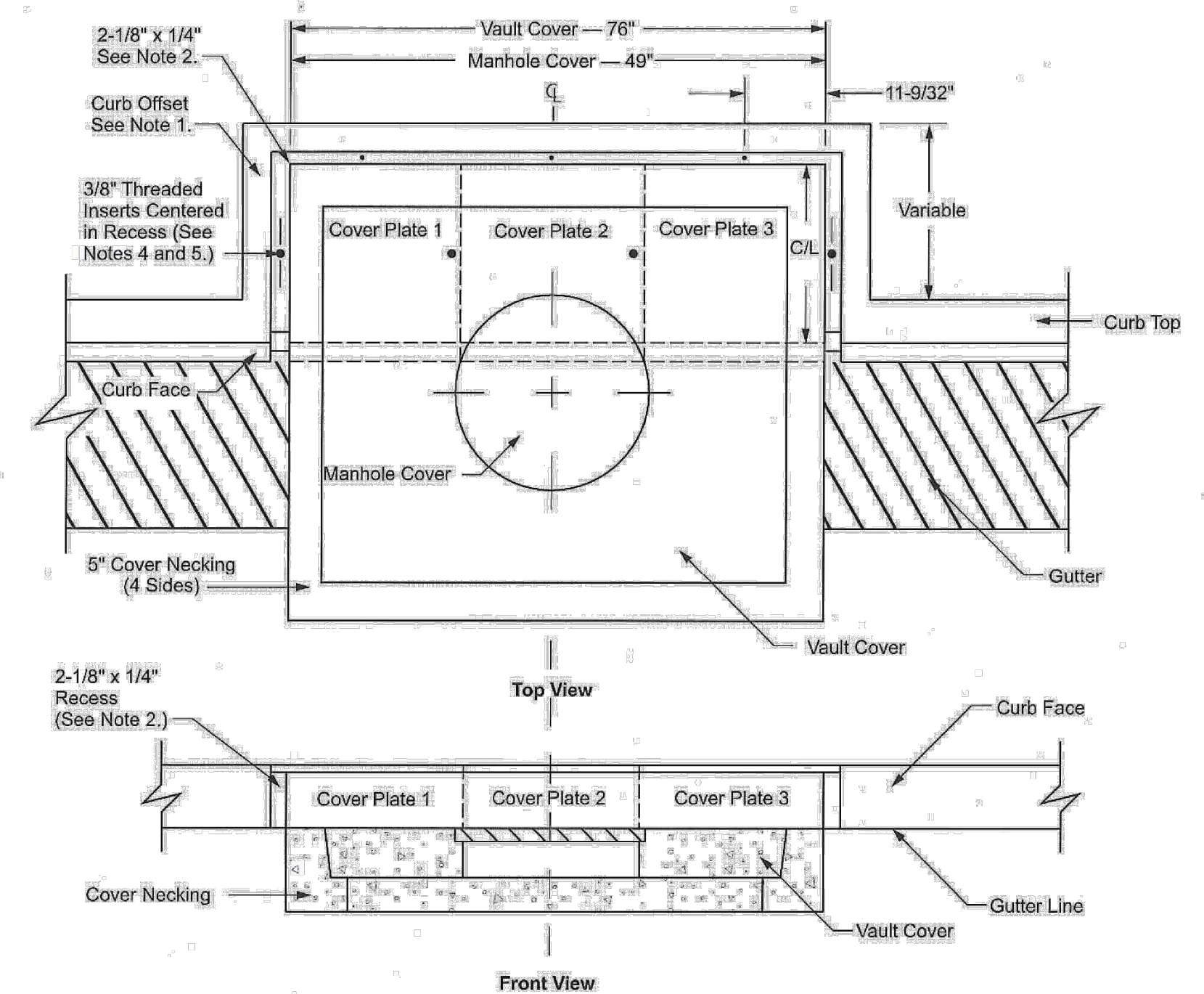


Underground Structures Standards

MC 870 Removable Curb for 4' x 5' Vault Covers and Manhole Covers

Scope MC 870.1 Removable Curb for 4' x 5' Vault Covers and Manhole Covers

Figure MC 870-1: Removable Curb for 4' x 5' Vault Covers and Manhole Covers



- Note(s): 1. The three-sided offset curbing around the vault necking, or manhole necking, shall be constructed to the dimensions of the existing or proposed curbing. 2. A 2-1/8" wide by 1/4" deep recess shall be placed on top of the offset curb, and curb face, as shown on the drawing. 3. Three plate covers are required for 4' x 5' vault covers. Manhole covers require two plate covers (plate #1 and 3).

Approval table for MC 870 Removable Curb for 4' x 5' Vault Covers and Manhole Covers, Sheet 1 of 2, UGS SCE Public

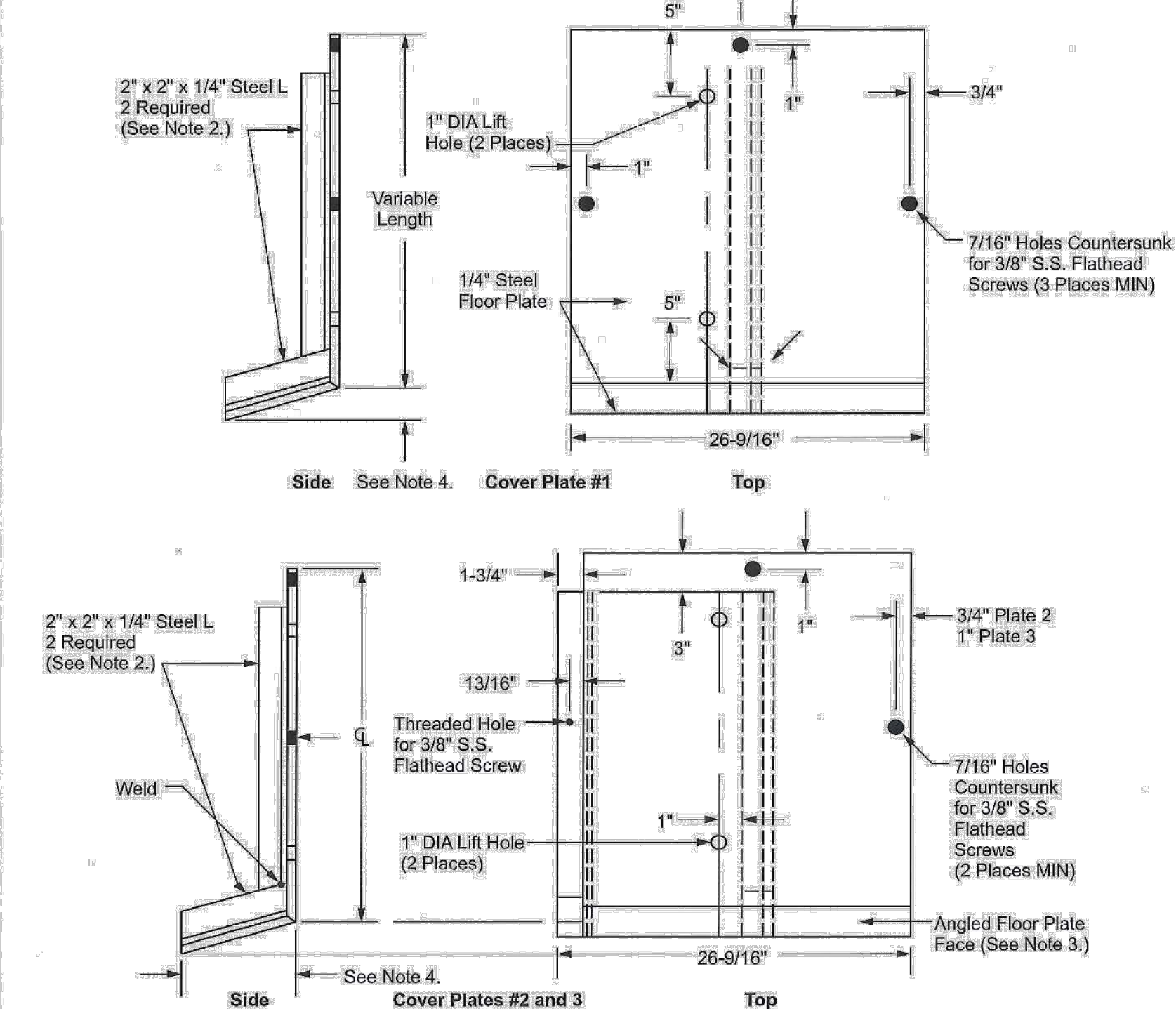
REMOVABLE CURB DETAIL NTS



Underground Structures Standards

Scope MC 870.2 Removable Curbing (Steel Cover Plates)

Figure MC 870-2: Removable Curbing (Steel Cover Plates)



- Note(s): 1. Nonskid 1/4" thick steel floor plates shall be constructed to the dimensions shown. See MC 860 for plate location sequence on curb offset. 2. The 2" x 2" x 1/4" steel L shall be welded to the top and angled floor plate face.

Approval table for MC 870 Removable Curb for 4' x 5' Vault Covers and Manhole Covers, Sheet 2 of 2, UGS SCE Public

REMOVABLE CURBING (STEEL COVER PLATES) DETAIL NTS

URBANGREEN BIOFILTER STANDARD DETAIL NTS. Includes diagrams for PLAN VIEW, SECTION C-C, SECTION B-B, SECTION A-A, and OPTIONAL RAISED GRATE DETAIL. Includes BIOFILTER DESIGN NOTES, MODEL DESIGN DETAILS table, and SITE SPECIFIC DATA REQUIREMENTS table.

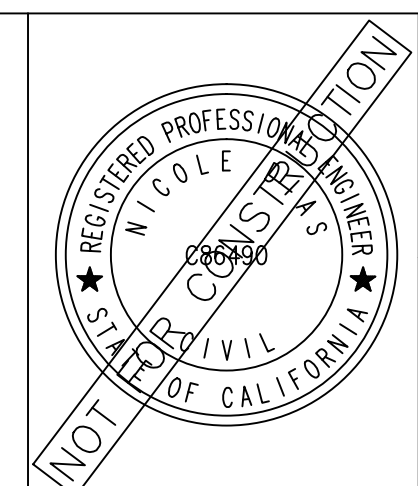
URBANGREEN BIOFILTER STANDARD DETAIL NTS

95% SUBMITTAL

CD-5

Revision table with columns: REV, SYMBOL, DESCRIPTION OF CHANGE, RCE, DATE

Prepared by: Kimley-Horn. Includes company logo, address (660 South Figueroa Street, Suite 2050, Los Angeles, CA 90017), and contact info (Tel (213) 261-4040).

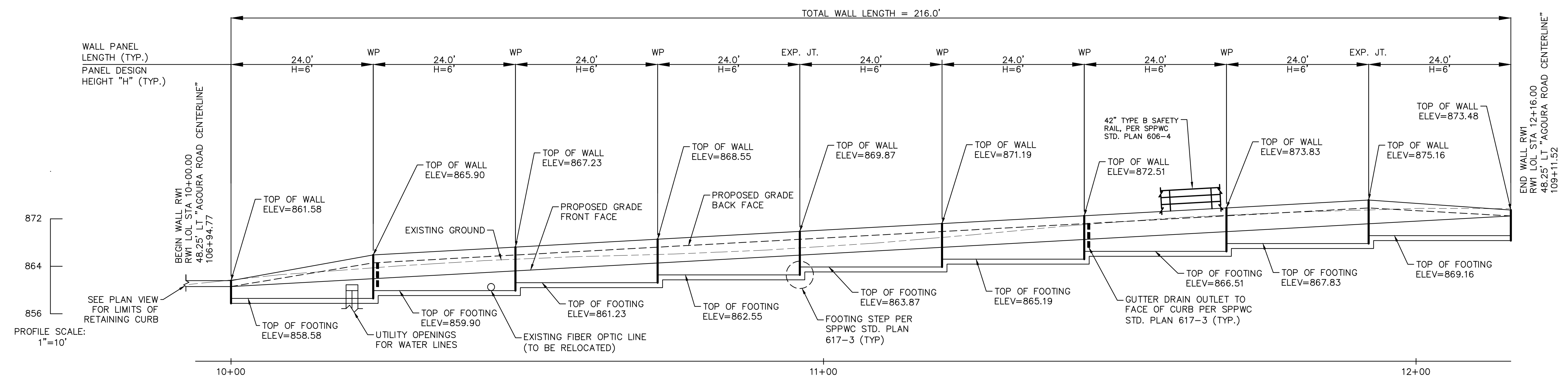


Reviewed by: Charmaine Yambao, Associate Civil Engineer. Approved by: Ramiro Adeva, Director of Public Works/City Engineer.



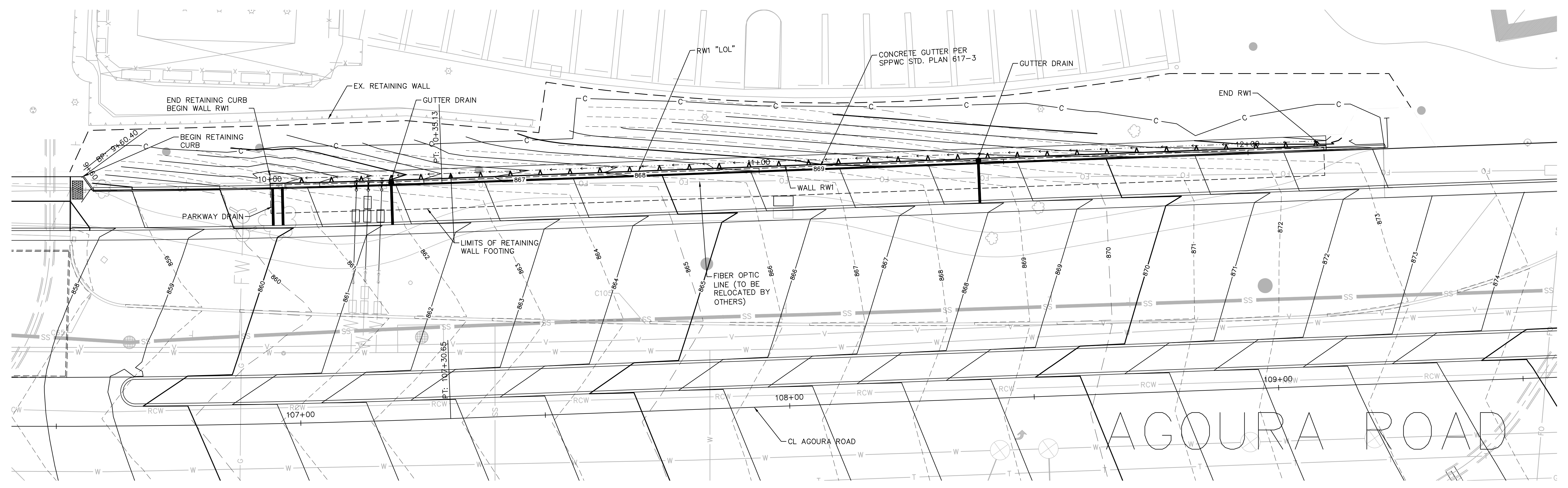
Project title: KANAN ROAD/AGOURA ROAD ULTIMATE INTERSECTION IMPROVEMENTS CONSTRUCTION DETAILS. Includes design, draw, and check info, and sheet number 17 of 42.

Vertical text on the right edge: K:\D:\RPM\09083026.dwg - Kanan Agoura Intersection Working\09083026.dwg - 09083026.dwg 10:28:17 - 12/09/15



WALL RW1 PLAN
SCALE: 1" = 10'

- GENERAL NOTES**
1. FOR RETAINING WALL TYPICAL SECTION AND DIMENSIONS CORRESPONDING TO "H" SHOWN ON WALL ELEVATION, SEE SPPWC STD. PLAN 613-4.
 2. FOR RETAINING WALL FOOTING STEP DETAILS AND JOINT DETAILS SEE SPPWC STD. PLAN 617-3.
 3. FOR WALL GUTTER OUTLET TO CURB DETAIL SEE SPPWC STD. PLAN 617-3.
 4. EXCAVATION AND BACKFILL LIMITS PER TYPICAL SECTION.
 5. WALL LENGTH MEASURED ALONG WALL LAYOUT LINE.
 6. FOR 42" TYPE B SAFETY RAIL DETAIL SEE SPPWC STD. PLAN 606-4.
 7. FOR UTILITY OPENING DETAILS SEE SPPWC STD. PLAN 617-3.



WALL RW1 DEVELOPED ELEVATION
SCALE: 1" = 10'

95% SUBMITTAL

RW-1

REV	SYMBOL	DESCRIPTION OF CHANGE	RCE	DATE

PREPARED BY:

Kimley»Horn

© 2017 KIMLEY-HORN AND ASSOCIATES, INC.
660 South Figueroa Street, Suite 2050, Los Angeles, CA 90017
Tel (213) 261-4040

NICOLE DIAS R.C.E. C86490 DATE



REVIEWED BY:

CHARMAINE YAMBAO DATE
ASSOCIATE CIVIL ENGINEER

APPROVED BY:

RAMIRO ADEVA DATE
DIRECTOR OF PUBLIC WORKS/CITY ENGINEER

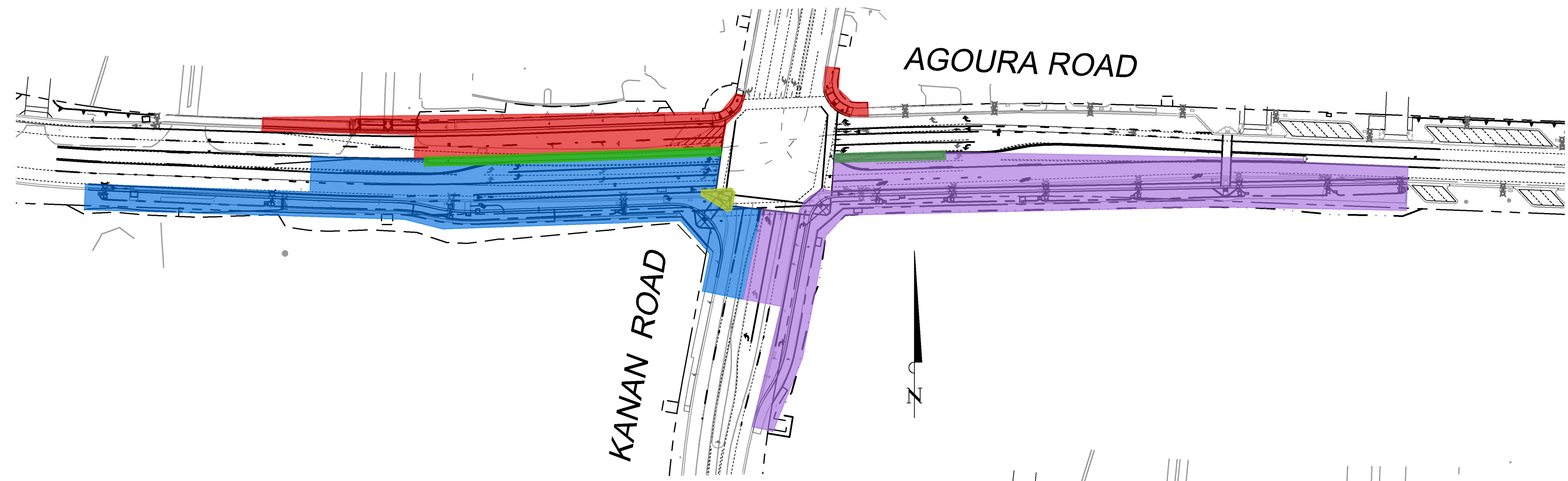


KANAN ROAD/AGOURA ROAD
ULTIMATE INTERSECTION IMPROVEMENTS
RETAINING WALL PLANS

DESIGNED BY: ND
DRAWN BY: CG
CHECKED BY: AC
KHA JOB NUMBER: 099083026

SHEET 18 OF 42

K:\D:\RW1\099083026 - Kanan Agoura Intersection\Working\03_CADD\03_Sheets\Retaining Wall Plans - 099083026.dwg 10-26-17 12:10 PM

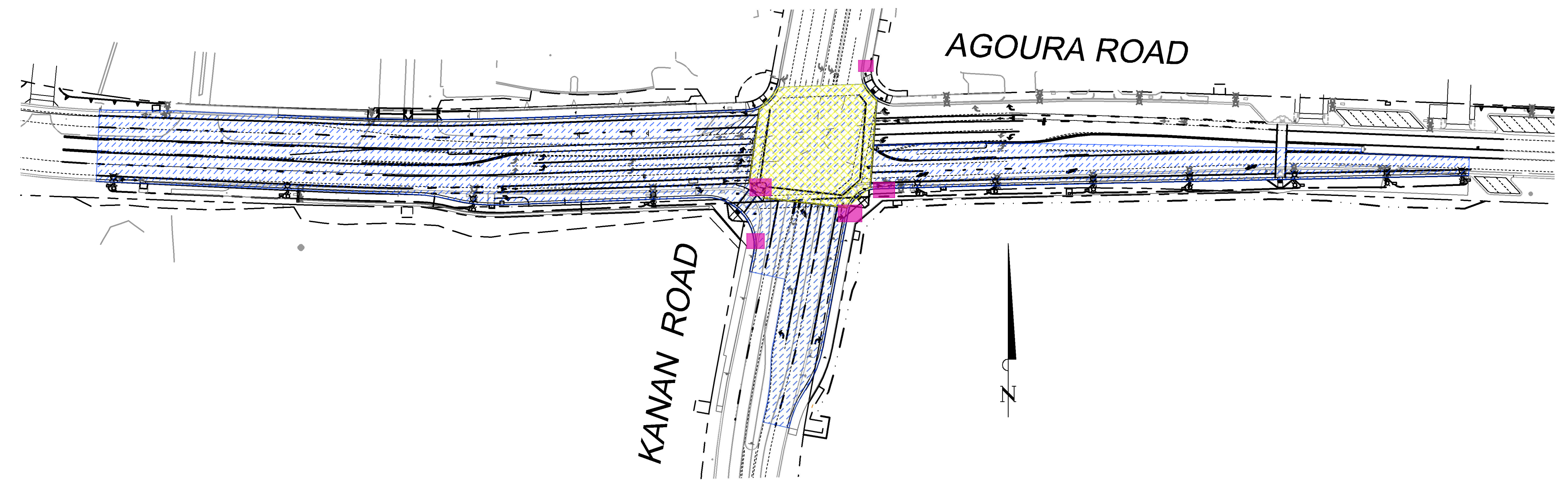


CONSTRUCTION PHASES 1 & 2

- PHASE 1A – NORTHWEST SECTION
REMOVE EXISTING CURB, GUTTER, AND ADA RAMP. RECONSTRUCT CURB, GUTTER, ADA RAMP, AND CONCRETE PAVEMENT. CONSTRUCT RETAINING WALL. RELOCATE ANY OAK TREES, EXISTING SIGNS, POSTS, STREET LIGHTS, ETC. AS INDICATED ON PLANS. INSTALL TEMPORARY TRAFFIC SIGNALS.
- PHASE 1B – NORTHEAST SECTION
REMOVE AND RECONSTRUCT EXISTING ADA RAMP. RELOCATE ANY EXISTING SIGNS, POSTS, STREET LIGHTS, ETC. AS INDICATED ON PLANS. INSTALL TEMPORARY TRAFFIC SIGNALS.
- PHASE 1C – SOUTHWEST SECTION
REMOVE EXISTING CURB, GUTTER, AND RAMP. RECONSTRUCT CURB, GUTTER, RAMP, AND CONCRETE PAVEMENT. RELOCATE ANY SIGNS, POSTS, STREET LIGHTS, ETC. AS INDICATED ON PLANS. INSTALL TEMPORARY TRAFFIC SIGNALS.
- PHASE 1D – SOUTHEAST SECTION
REMOVE EXISTING CURB, GUTTER, AND RAMP. RECONSTRUCT CURB, GUTTER, RAMP, AND CONCRETE PAVEMENT. RELOCATE ANY SIGNS, POSTS, STREET LIGHTS, ETC. AS INDICATED ON PLANS. INSTALL TEMPORARY TRAFFIC SIGNALS.
- PHASE 2A – EAST LEG
CONSTRUCT MEDIAN ON EAST LEG OF AGOURA ROAD.
- PHASE 2B – WEST LEG
CONSTRUCT MEDIAN ON WEST LEG OF AGOURA ROAD.
- PHASE 2C
CONSTRUCT PEDESTRIAN REFUGE ISLAND "PORKCHOP" AT SOUTHWEST CORNER.

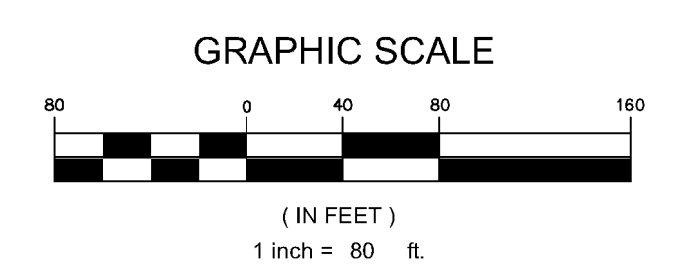
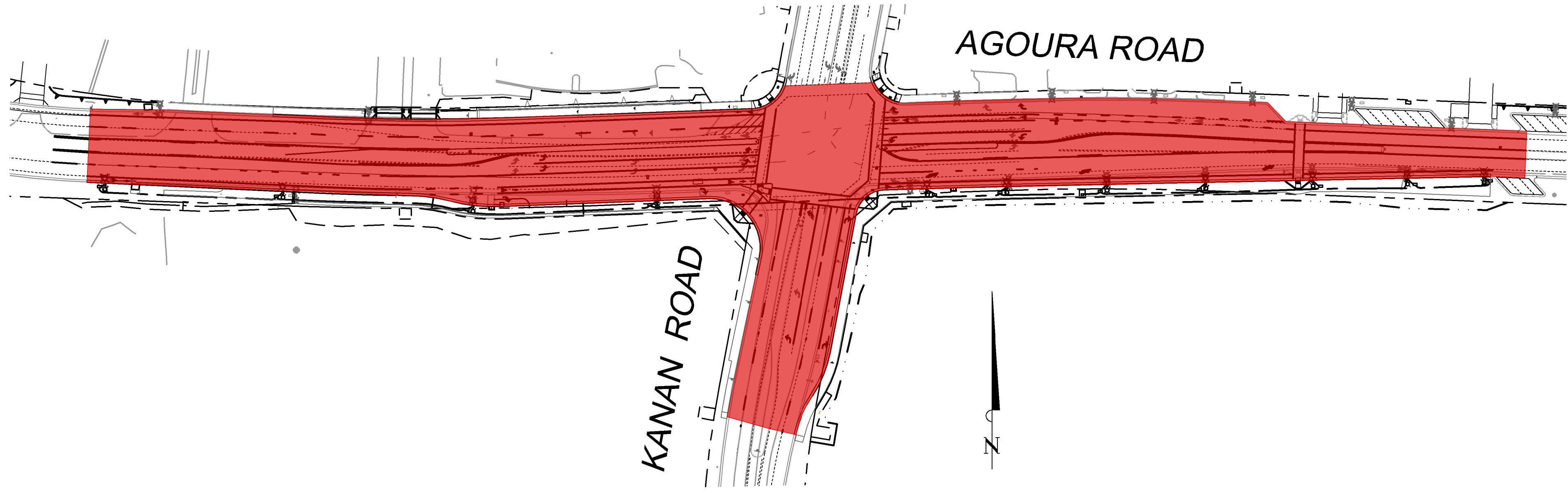
CONSTRUCTION PHASES 3, 4, & 5

- PHASE 3
INSTALL TRAFFIC SIGNALS AND OTHER NECESSARY EQUIPMENT AS INDICATED ON PLANS.
- PHASE 4
CONSTRUCT ASPHALT OVERLAY.
- PHASE 5A
REMOVE INTERSECTION PAVEMENT.
- PHASE 5B
INSTALL DECORATIVE PAVEMENT.



CONSTRUCTION PHASE 6

- INSTALL TRAFFIC SIGNING AND PAVEMENT STRIPING AS INDICATED ON PLANS.



95% SUBMITTAL

CP-1

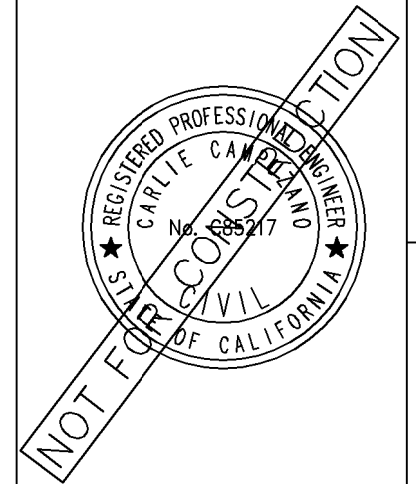
REV	SYMBOL	DESCRIPTION OF CHANGE	RCE	DATE

PREPARED BY:

Kimley»Horn

© 2017 KIMLEY-HORN AND ASSOCIATES, INC.
560 South Figueroa Street, Suite 2050, Los Angeles, CA 90017
Tel (213) 261-4040

CARLE CAMPUZANO R.C.E. C85217 DATE



REVIEWED BY:	8/4/15
CHARMAINE YAMBAO	DATE
ASSOCIATE CIVIL ENGINEER	
APPROVED BY:	8/4/15
RAMIRO ADE/A	DATE
DIRECTOR OF PUBLIC WORKS/CITY ENGINEER	



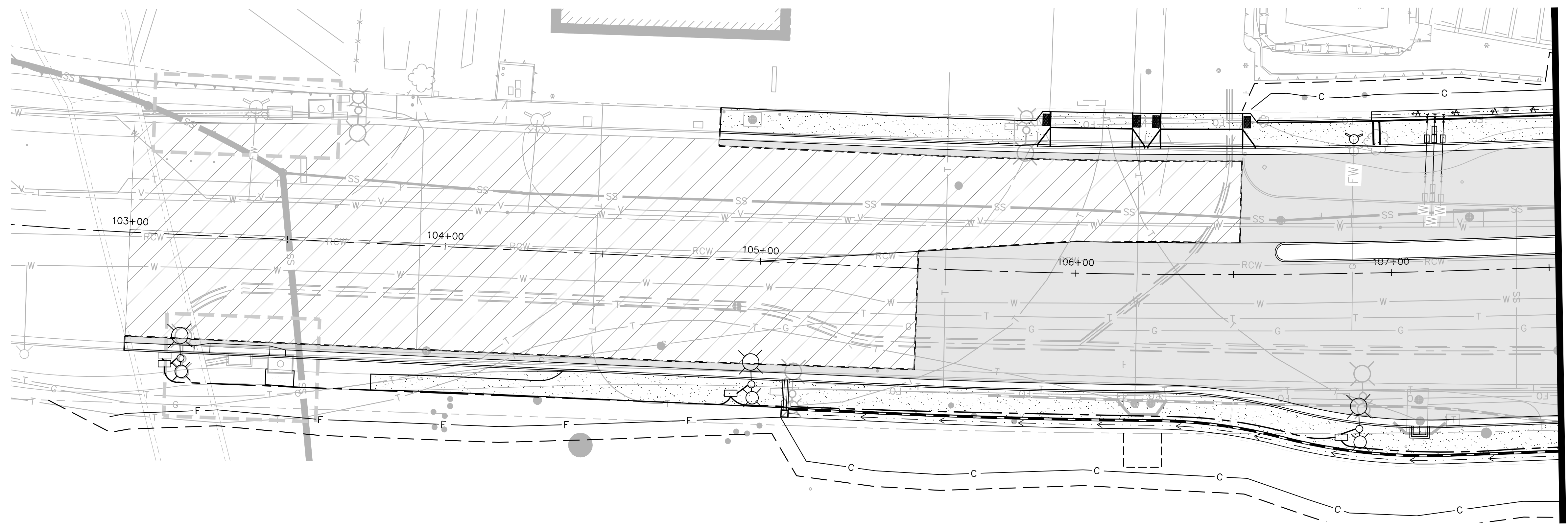
KANAN ROAD/AGOURA ROAD
ULTIMATE INTERSECTION IMPROVEMENTS

CONSTRUCTION PHASING PLAN

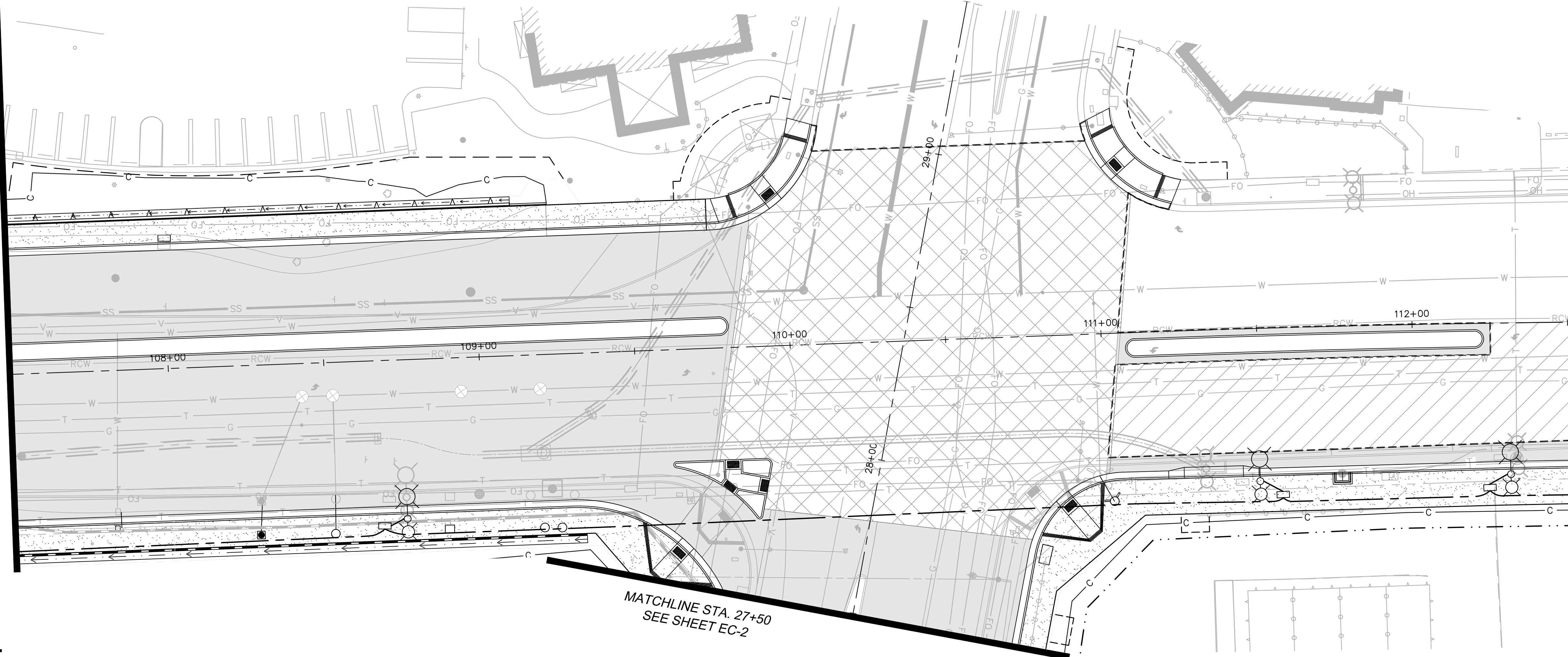
DESIGNED BY:	DRAWN BY:	CHECKED BY:	KHA_JOB NUMBER	099083026
CC	RP	SC		

SHEET 19 OF 42

K:\UT_JRWY\099083026 - Kanan Agoura Intersection Working\05_CADD\03_Sheets\Construction Phasing Plan - 099083026.dwg 11-01-17-3:31 PM



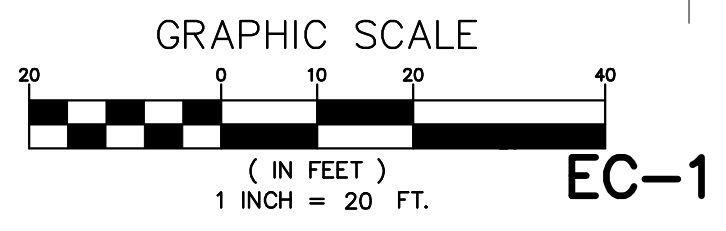
MATCHLINE STA. 107+50
SEE BELOW



MATCHLINE STA. 107+50
SEE ABOVE

MATCHLINE STA. 112+50
SEE SHEET EC-2

MATCHLINE STA. 27+50
SEE SHEET EC-2



EC-1

95% SUBMITTAL

REV	SYMBOL	DESCRIPTION OF CHANGE	RCE	DATE

PREPARED BY:

Kimley»Horn

© 2017 KIMLEY-HORN AND ASSOCIATES, INC.
660 South Figueroa Street, Suite 2050, Los Angeles, CA 90017
Tel (213) 261-4040

NICOLE DIAS R.C.E. C86490 DATE



REVIEWED BY:

CHARMAINE YAMBABO DATE
ASSOCIATE CIVIL ENGINEER

APPROVED BY:

RAMIRO ADEVA DATE
DIRECTOR OF PUBLIC WORKS/CITY ENGINEER



KANAN ROAD/AGOURA ROAD
ULTIMATE INTERSECTION IMPROVEMENTS

EROSION CONTROL PLANS

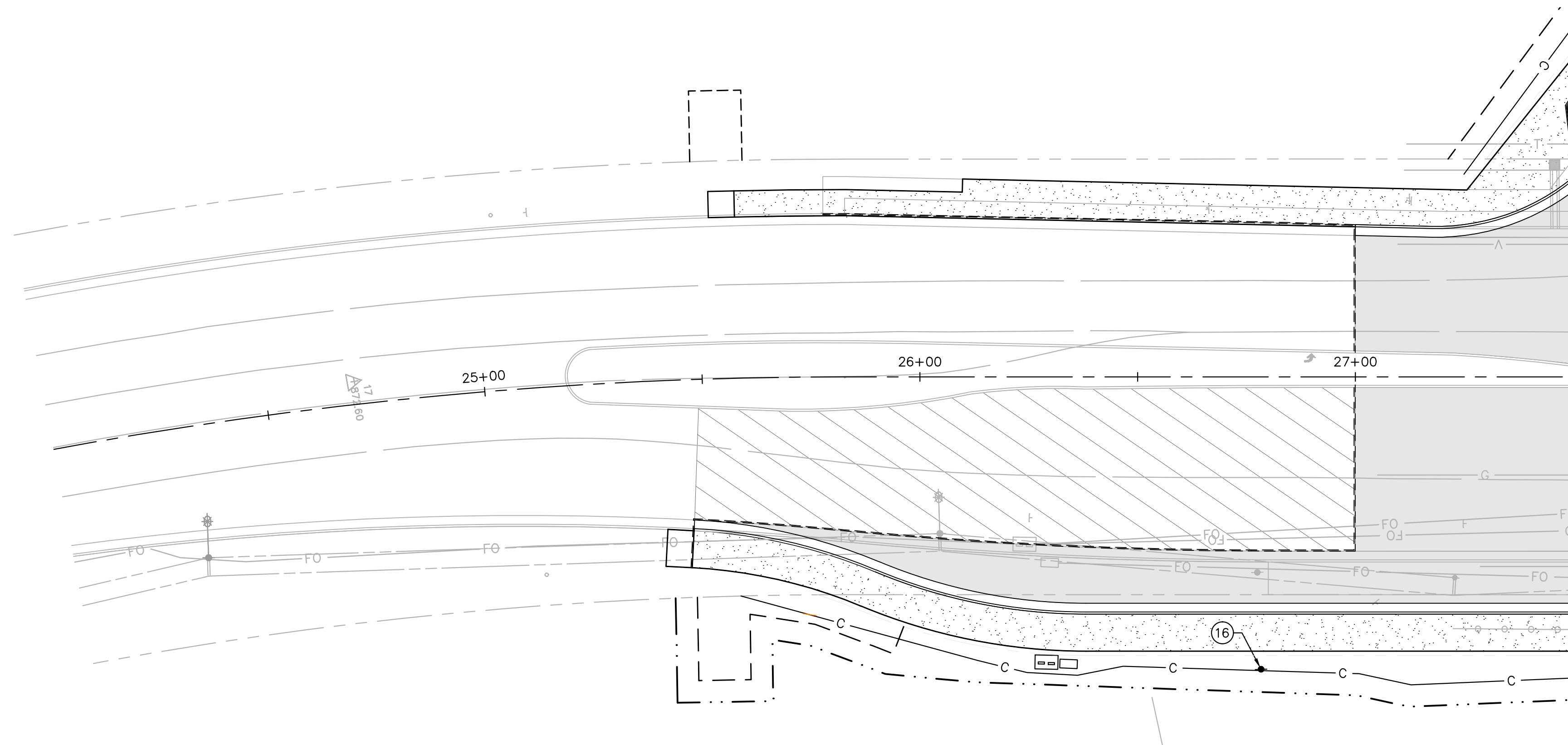
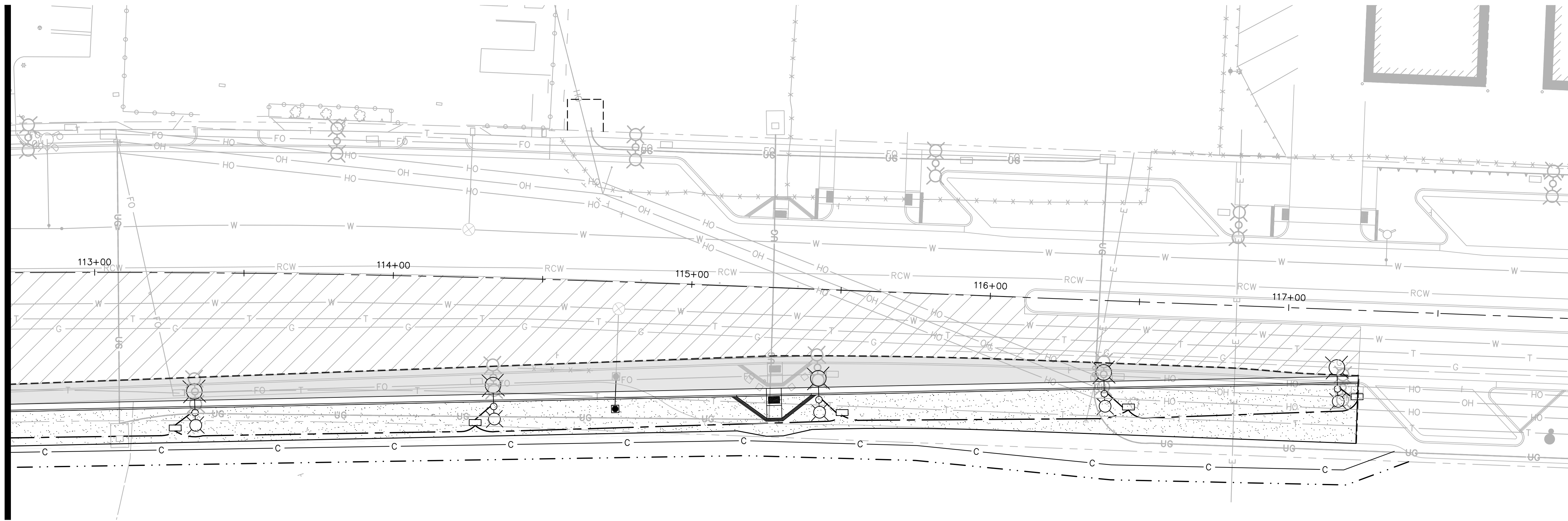
DESIGNED BY: ND
DRAWN BY: CG
CHECKED BY: AC

KHA JOB NUMBER: 099083026

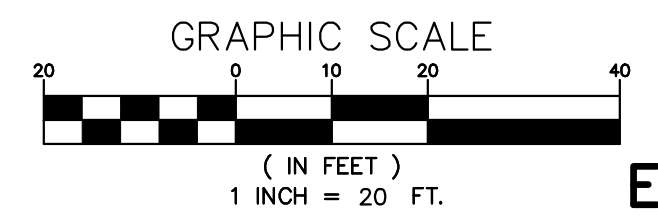
SHEET 20 OF 42

K:\D:\RHW\099083026 - Kanan Agoura Intersection\Working\03 CAD\03 Sheets\Erosion Control Plans - 01 - 099083026.dwg 10-26-17-12:12 PM

MATCHLINE STA. 112+50
SEE SHEET EC-1



MATCHLINE STA. 27+50
SEE SHEET EC-1



EC-2

95% SUBMITTAL

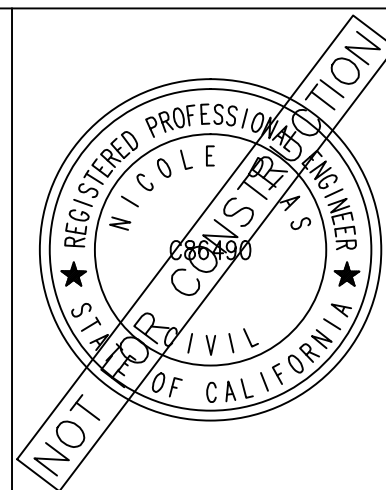
REV	SYMBOL	DESCRIPTION OF CHANGE	RCE	DATE

PREPARED BY:

Kimley»Horn

© 2017 KIMLEY-HORN AND ASSOCIATES, INC.
660 South Figueroa Street, Suite 2050, Los Angeles, CA 90017
Tel (213) 261-4040

NICOLE DIAS R.C.E. C86490 DATE



REVIEWED BY:

CHARMAINE YAMBAO DATE
ASSOCIATE CIVIL ENGINEER

APPROVED BY:

RAMIRO ADEVA DATE
DIRECTOR OF PUBLIC WORKS/CITY ENGINEER



KANAN ROAD/AGOURA ROAD
ULTIMATE INTERSECTION IMPROVEMENTS

EROSION CONTROL PLANS

DESIGNED BY: ND DRAWN BY: CG CHECKED BY: AC KHA JOB NUMBER: 099083026

SHEET 21 OF 42

K:\D:\RHW\099083026 - Kanan Agoura Intersection\Working\03 CAD\03 Sheet\Erosion Control Plans - 02 - 099083026.dwg 10-26-17 12:12 PM