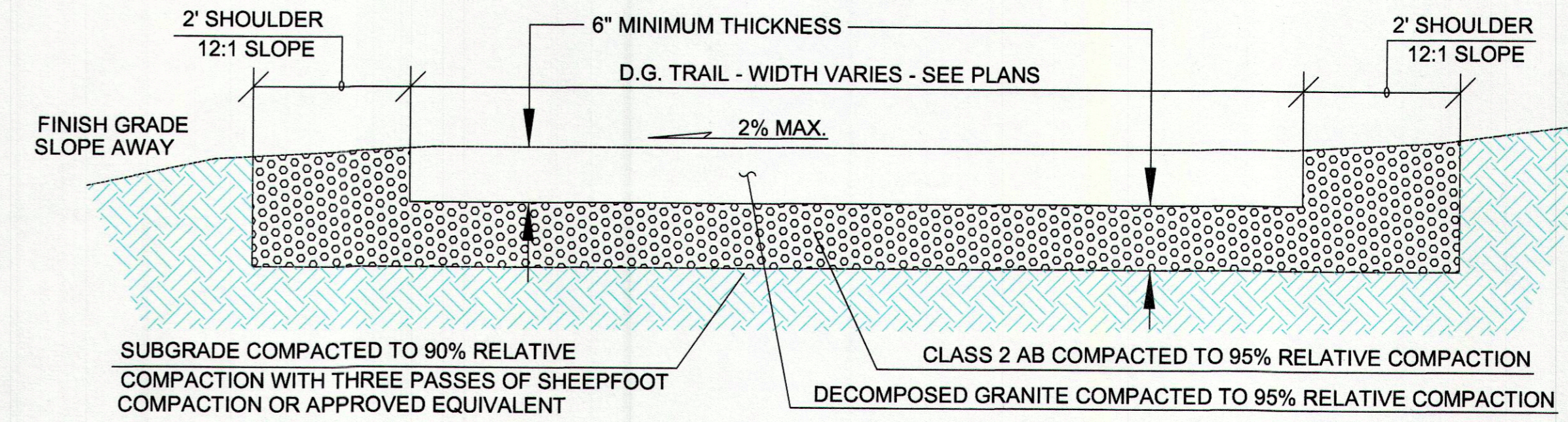


CITY OF AGOURA HILLS
COMMUNITY DEVELOPMENT BLOCK GRANT (CDBG)
OLD AGOURA PARK ACCESSIBILITY IMPROVEMENT PROJECT
CHESEBORO CANYON CHANNEL AT DRIVER AVENUE CROSSING

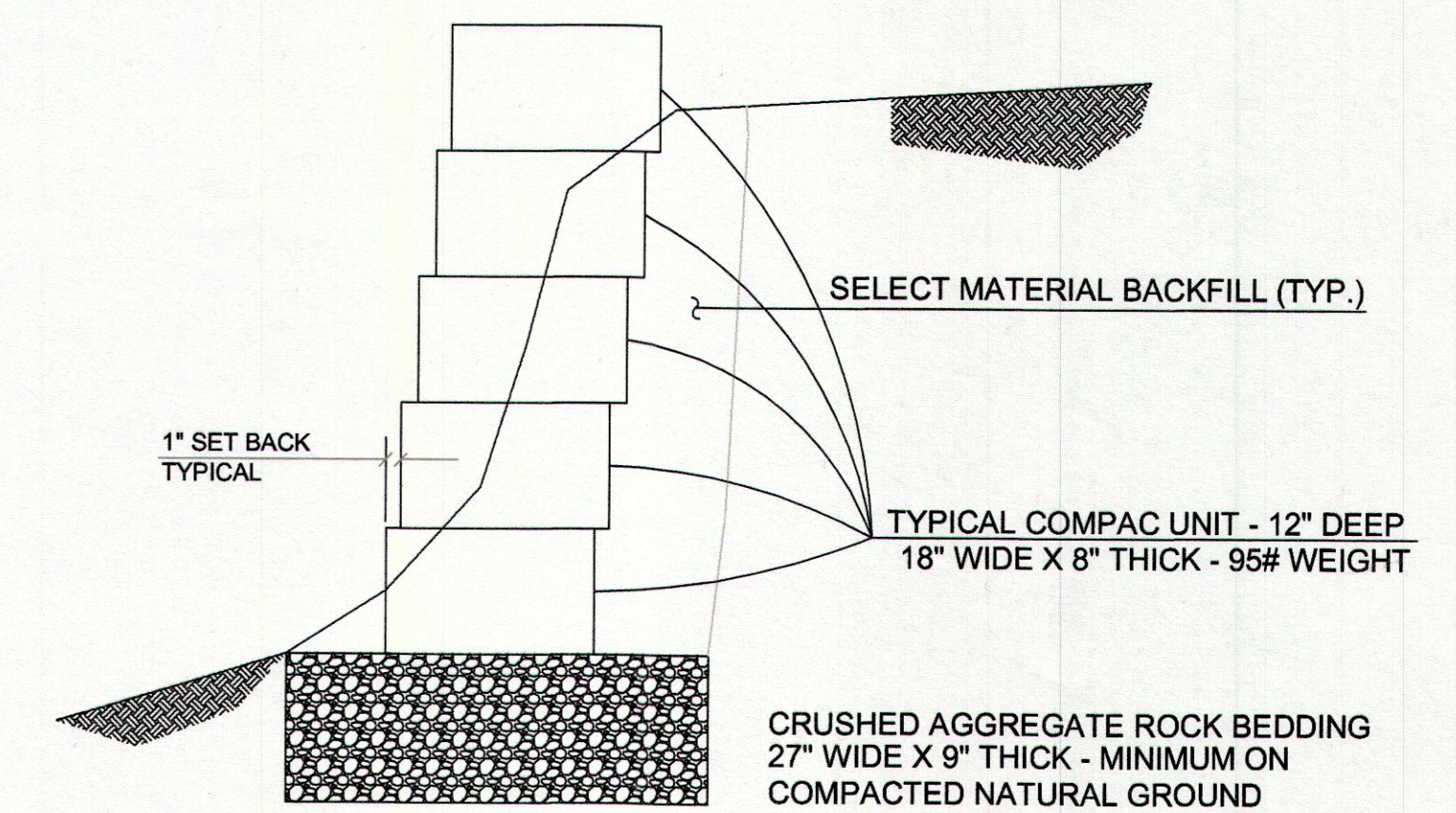
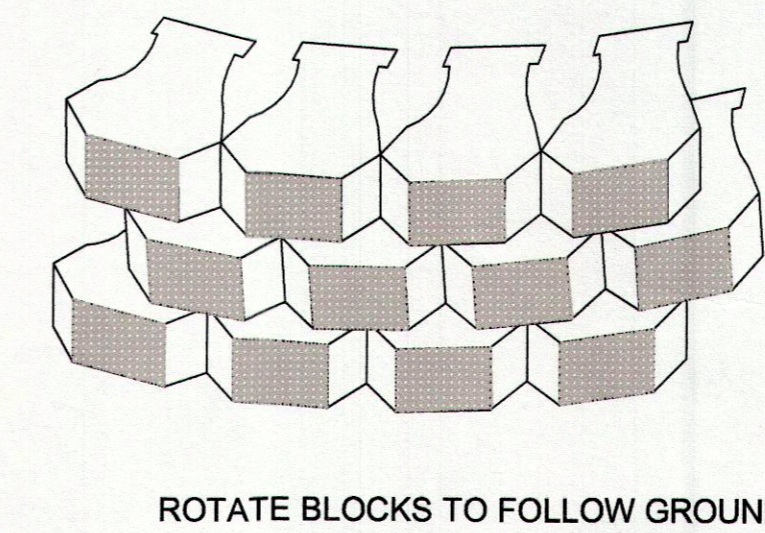
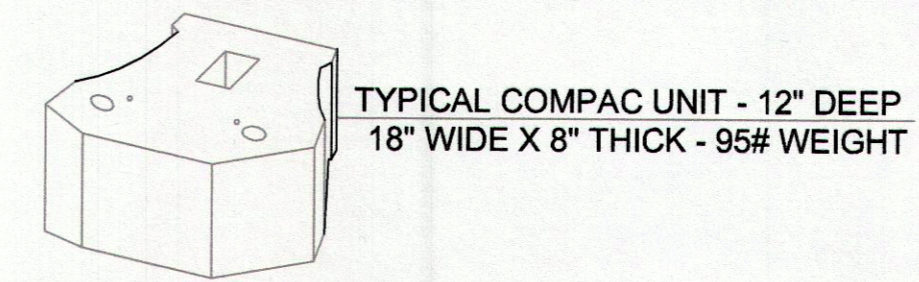
N. I. B. # 18 - 01

INDEX OF DRAWINGS

1. COVER PAGE, INDEX MAP AND INDEX OF DRAWINGS
2. D.G. PATHWAY LINKAGE FROM PARK TO EAST END OF BRIDGE
3. CHESEBORO CHANNEL AT DRIVER AVENUE CROSSING
4. ABUTMENT DETAILS AND PRE-FABRICATED BRIDGE INFO.
5. IMPROVEMENTS AT WEST END OF THE PEDESTRIAN BRIDGE
6. IMPROVEMENTS AT EAST END OF THE PEDESTRIAN BRIDGE
7. STREET IMPROVEMENTS AND TRANSITIONS

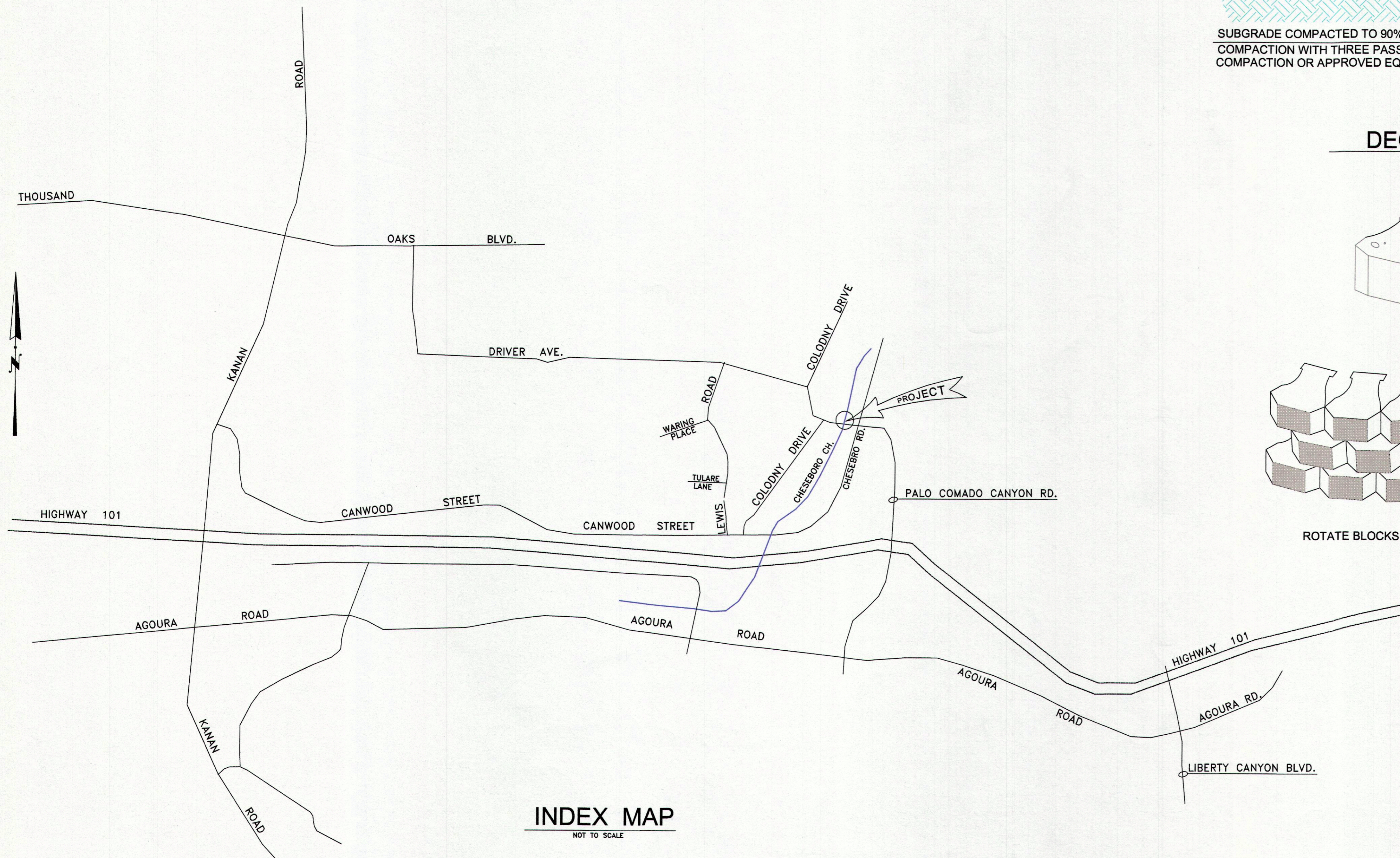


DECOMPOSED GRANITE TRAIL DETAIL
NOT TO SCALE

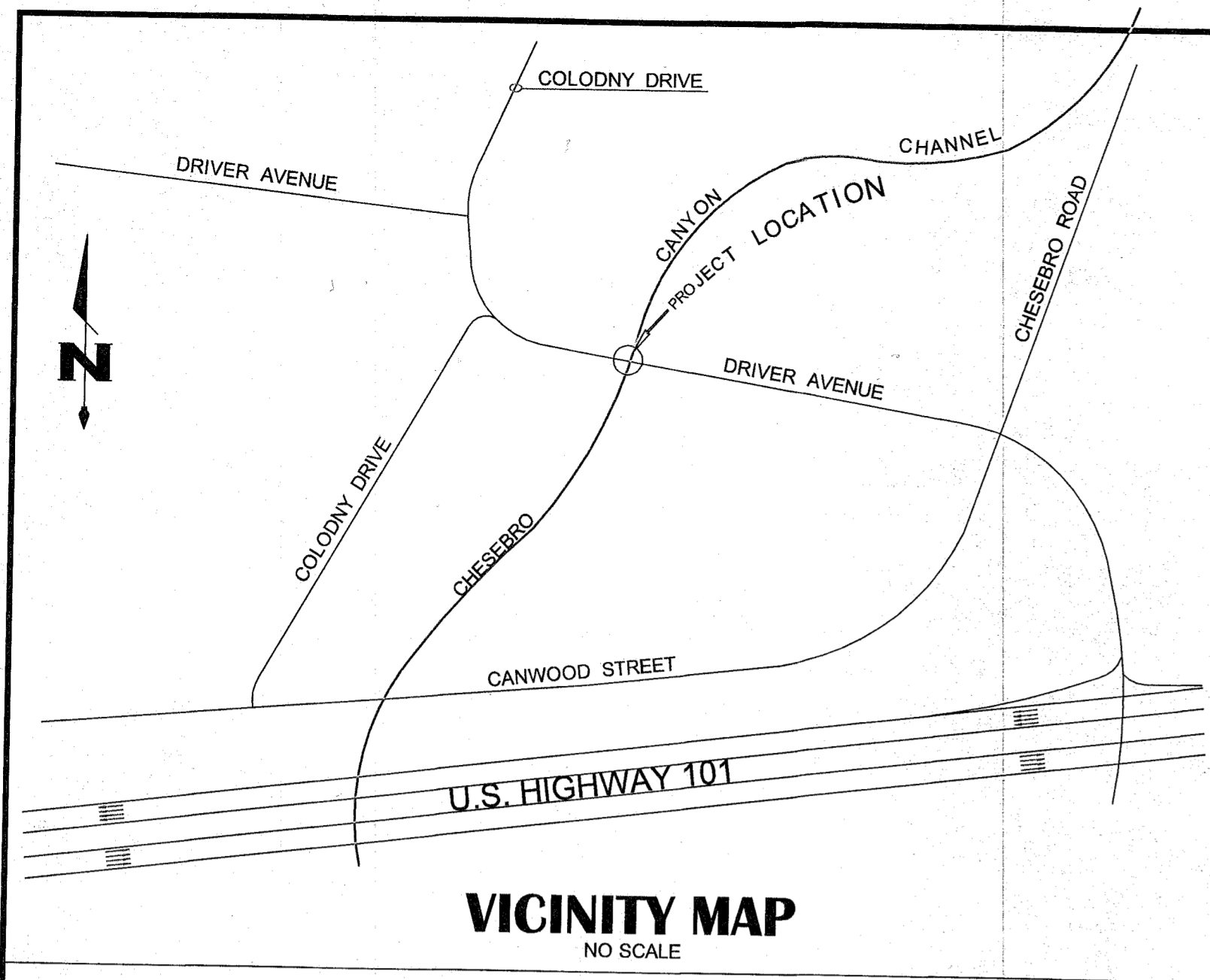


LOW KEYSTONE GRAVITY WALL DETAIL
NOT TO SCALE

PLAN LOCATIONS:
 EAST SIDE ALONG EXISTING DRAINAGE DITCH
 WEST SIDE - WING WALL TO PROTECT PIPE INLET



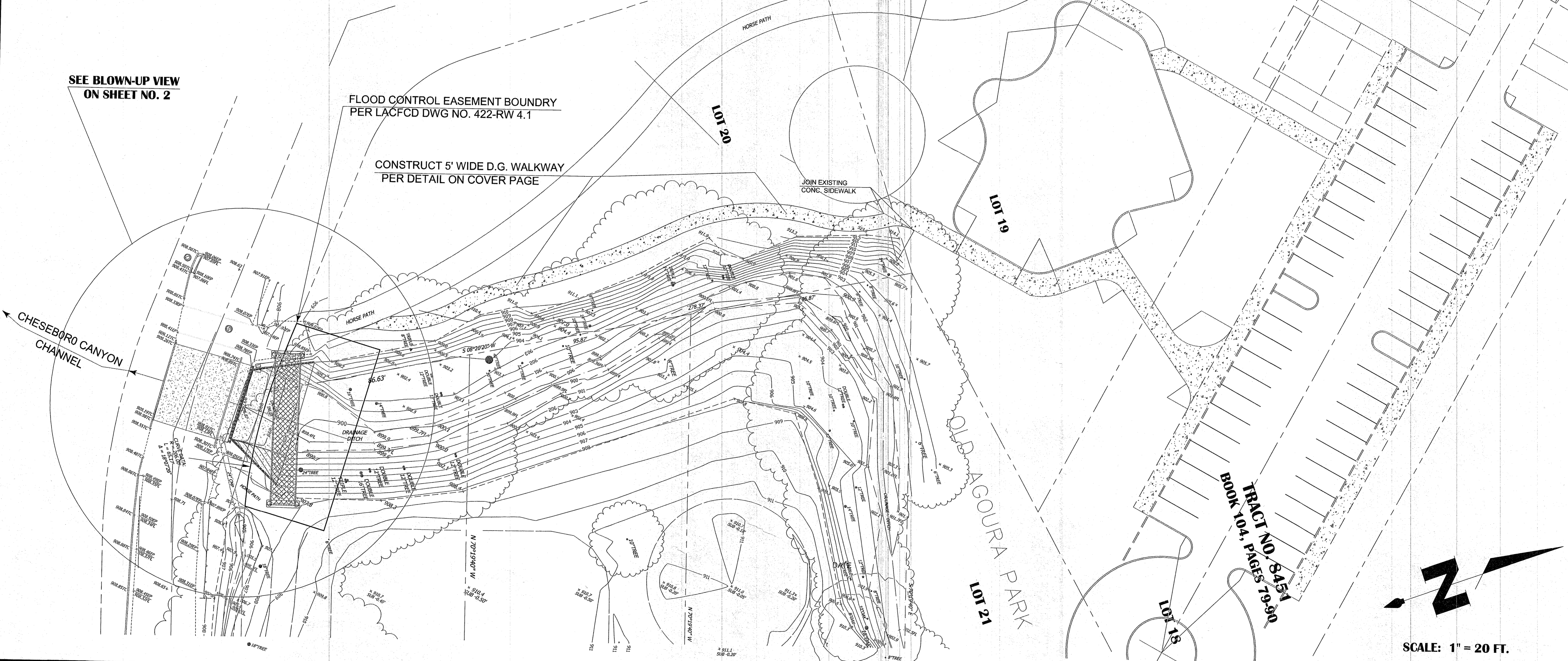
	PREPARED BY: <i>Jayant P. Patel</i> 03/13/2018 PROJECT ENGINEER DATE	CITY OF AGOURA HILLS APPROVAL REVIEWED BY: _____ DATE: _____ RAMIRO S. ADEVA III, P.E. 03/21/18 DIR. OF PUBLIC WORKS/CITY ENGINEER RCE NO. 66865 EXP DATE 09/30/18	 COMMUNITY DEVELOPMENT BLOCK GRANT (CDBG) OLD AGOURA PARK ACCESSIBILITY IMPROVEMENT PROJECT CHESEBORO CANYON CHANNEL AT DRIVER AVENUE CROSSING COVER PAGE, INDEX MAP & INDEX OF DRAWINGS SHEET <u>1</u> OF <u>7</u>
REVISION # SYMBOL DESCRIPTION OF CHANGE APPROVED DATE			



SEE BLOW-UP VIEW
ON SHEET NO. 2

FLOOD CONTROL EASEMENT BOUNDARY
PER LACFCD DWG NO. 422-RW 4.1

CONSTRUCT 5' WIDE D.G. WALKWAY
PER DETAIL ON COVER PAGE



TRACT NO. 8451
BOOK 104, PAGES 79-90

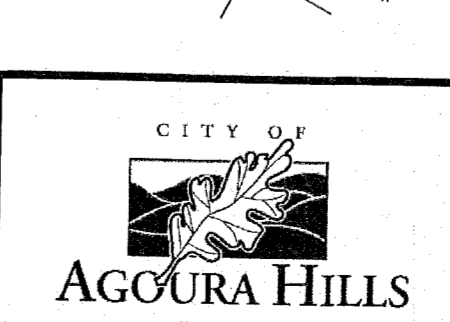
REVISION #	SYMBOL	DESCRIPTION OF CHANGE	APPROVED	DATE

PREPARED BY:
Jayant P. Patel
PROJECT ENGINEER
DATE: 03/13/2018

CITY OF AGOURA HILLS APPROVAL

REVIEWED BY: _____
DATE: _____

RAMIRO S. ADEVA III, P.E.
DIR. OF PUBLIC WORKS/CITY ENGINEER
DATE: 3/21/18
66865 RCE NO.
09/30/18 EXP DATE



COMMUNITY DEVELOPMENT BLOCK GRANT (CDBG)
OLD AGOURA PARK ACCESSIBILITY IMPROVEMENT PROJECT
D.G. PATHWAY LINKAGE FROM PARK TO EAST SIDE BRIDGE
SHEET 2 OF 7