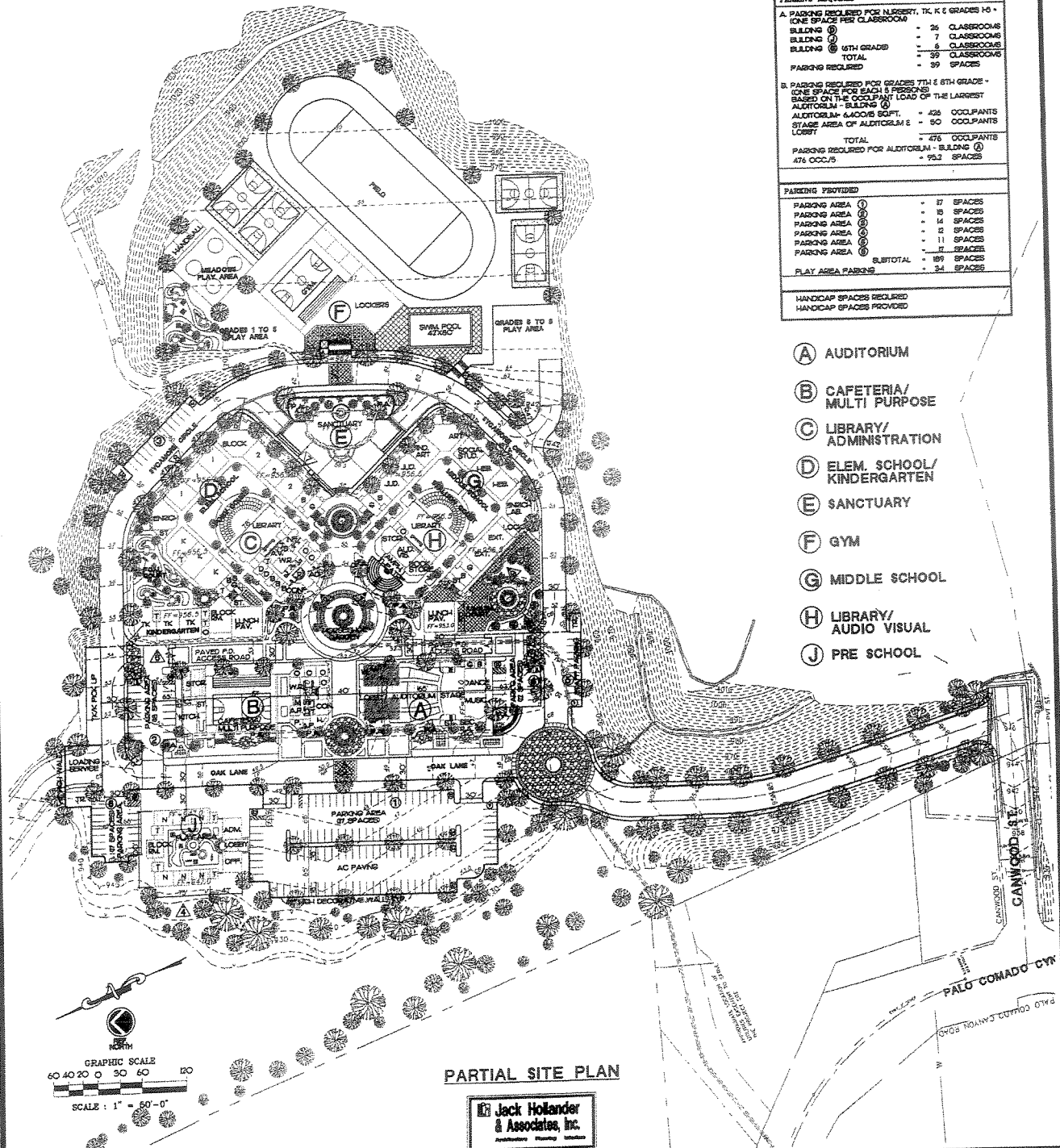




# Abraham Joshua Heschel Day School West



LEGEND:	
(A)	BUILDING CALL OUT
(A)	EXTERIOR ELEVATION
(S)	PARKING AREA

PARKING ANALYSIS	
PARKING REQUIRED	
A. PARKING REQUIRED FOR LIBRARY, TK, K & GRADES HO - ONE SPACE PER CLASSROOM	
BUILDING (C)	- 26 CLASSROOMS
BUILDING (D)	- 7 CLASSROOMS
BUILDING (E) 15TH GRADE	- 6 CLASSROOMS
TOTAL	- 39 CLASSROOMS
PARKING REQUIRED	- 39 SPACES
B. PARKING REQUIRED FOR GRADES 7TH & 8TH GRADE - ONE SPACE FOR EACH 8 PERSONS BASED ON THE OCCUPANT LOAD OF THE LARGEST AUDITORIUM - BUILDING (A)	
AUDITORIUM - BUILDING (A)	- 426 OCCUPANTS
STAGE AREA OF AUDITORIUM & LOBBY	- 50 OCCUPANTS
TOTAL	- 476 OCCUPANTS
PARKING REQUIRED FOR AUDITORIUM - BUILDING (A)	- 95.2 SPACES
AT 4 OCC./5	- 95.2 SPACES
PARKING PROVIDED	
PARKING AREA (1)	- 17 SPACES
PARKING AREA (2)	- 15 SPACES
PARKING AREA (3)	- 14 SPACES
PARKING AREA (4)	- 12 SPACES
PARKING AREA (5)	- 11 SPACES
PARKING AREA (6)	- 17 SPACES
SUBTOTAL	- 89 SPACES
PLAY AREA PARKING	- 34 SPACES
HANDICAP SPACES REQUIRED	
HANDICAP SPACES PROVIDED	

- (A) AUDITORIUM
- (B) CAFETERIA/ MULTI PURPOSE
- (C) LIBRARY/ ADMINISTRATION
- (D) ELEM. SCHOOL/ KINDERGARTEN
- (E) SANCTUARY
- (F) GYM
- (G) MIDDLE SCHOOL
- (H) LIBRARY/ AUDIO VISUAL
- (J) PRE SCHOOL

PARTIAL SITE PLAN

Jack Hollander & Associates, Inc.  
Architects Planning Engineers