



REPORT TO CITY COUNCIL

DATE: NOVEMBER 13, 2019
TO: HONORABLE MAYOR AND MEMBERS OF THE CITY COUNCIL
FROM: GREG RAMIREZ, CITY MANAGER 
BY: RAMIRO ADEVA, DIRECTOR OF PUBLIC WORKS/CITY ENGINEER 
SUBJECT: APPROVE FINAL PARCEL MAP NO. 082220 (MARIA PISA DIMAGGIO)

Final Parcel Map No. 82220 merges two (2) parcels, totaling .24 acres, into one parcel, along with dedicating the necessary easements. The project is located at 29505 and 28127 Agoura Road (Assessor's Parcel No. 2061-012-020).

The map has been reviewed for technical accuracy, title information, and compliance with the State Subdivision Map Act, conditions of approval, City ordinances, and is consistent with the approved Tentative Parcel Map.

Staff respectfully recommends the City Council:

1. Approve Parcel Map No. 82220; and
2. Authorize the City Clerk to endorse the certificate on the face of the Map, which embodies the approval of said map.

Attachment: Copy of Parcel Map No. 082220

PARCEL MAP 082220

IN THE CITY OF LOS ANGELES
STATE OF CALIFORNIA
FOR LOT MERGER PURPOSES

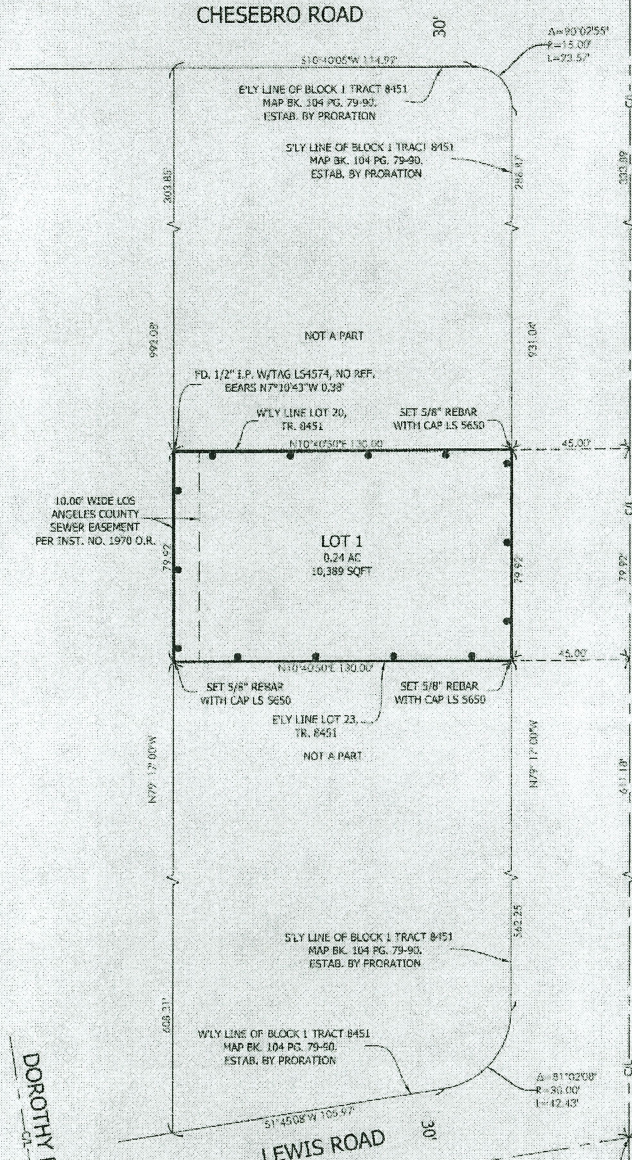


FD. BC IN MON WELL
PER PWFB 1606 PG. 2A

FD. STATE HIGHWAY BRASS
CAP MON IN H.H. DOWN 12"
AT P1 PER PWFB 1606 PG. 2A

ESTAB. AT RECORD ANGLE
& DISTANCE PER PWFB
1606 PG. 595, 596

CHESEBRO ROAD



ROAD
AGOURA ROAD

DOROTHY DRIVE

LEWIS ROAD

FD. SPIKE WITH WASHER LS 8231 PER PWFB 1606 PG. 989-990

ESTAB. BY INTERSECTION
CENTERLINE OF LEWIS AND
AGOURA ROAD

FD. SPIKE WITH WASHER FB
COENG IN LIEU OF 2" IP PER
PWFB 1606 PG 595

FD. SPIKE WITH WASHER FB
COENG IN LIEU OF 2" IP PER
PWFB 1606 PG 595

LEGEND

INDICATES THE BOUNDARY OF LAND MERGED BY THIS MAP