

Las Virgenes Valley Raptor Foraging Grassland Complex

Upper
Las Virgenes Canyon
Open Space Preserve

101

101

S A N T A M O N I C A M O U N T A I N S

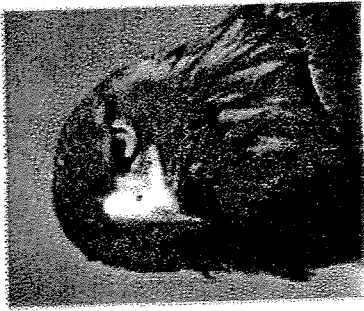
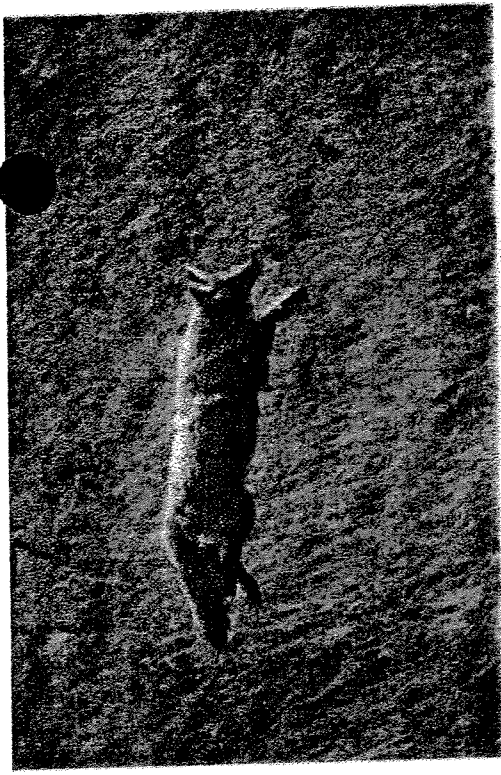
Malibu Creek State Park

Soka University

Topanga State Park

0 1 2 Miles





Wildlife Corridor



Soka University Major Central Santa Monica Mountains Habitat Linkage Hub

Malibu Creek State Park General Plan

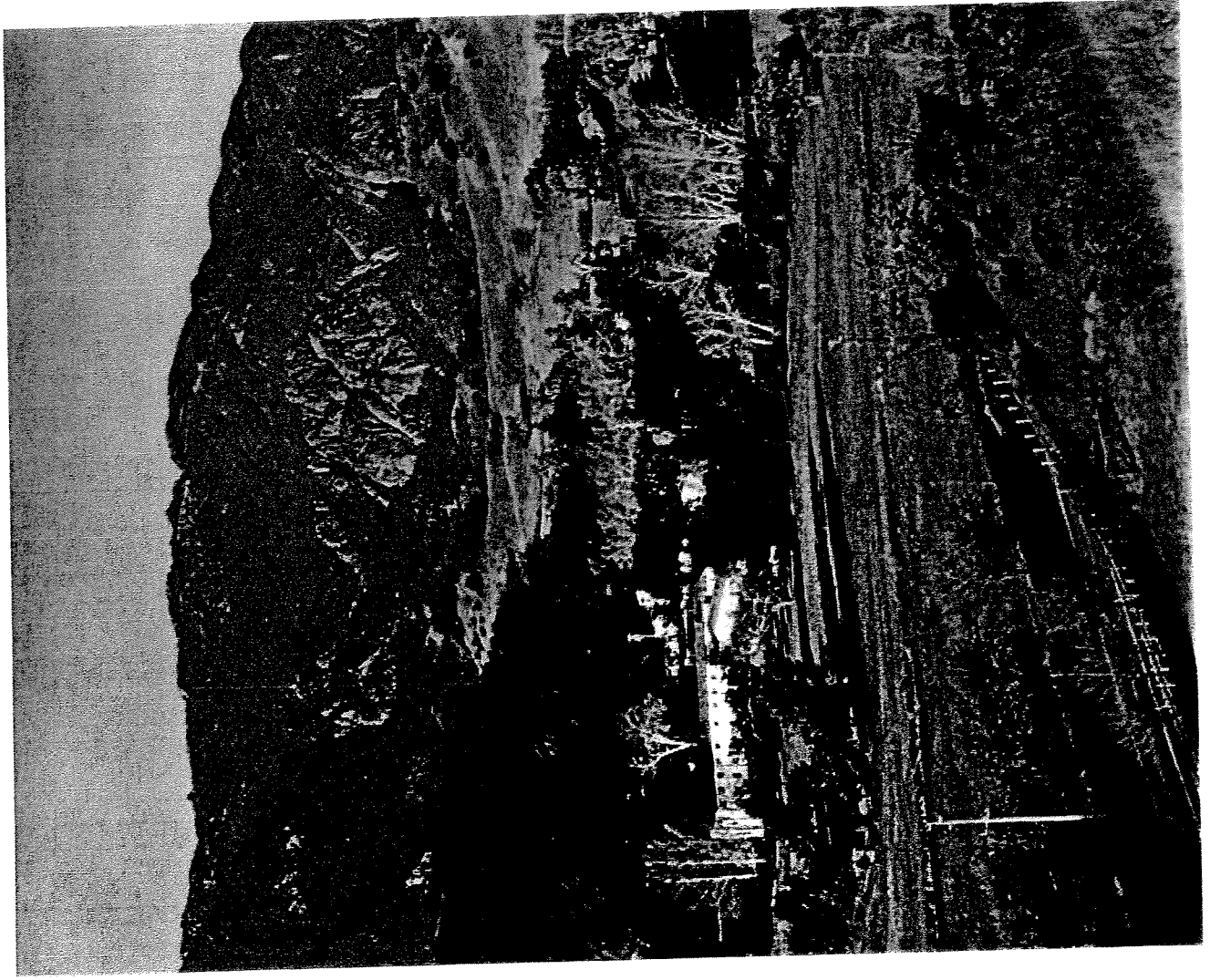
(November 2003 Draft)

Goal NR-5: ...The Park will work to maintain and enhance the dispersal and movement of native animals within and beyond Park boundaries.

Guideline NR-5.2: ...coordinate with other agencies and property owners to acquire or secure land acquisitions that ensure key wildlife corridors are preserved or enhanced.

**Importance of the Soka acquisition to the
California State Parks system**

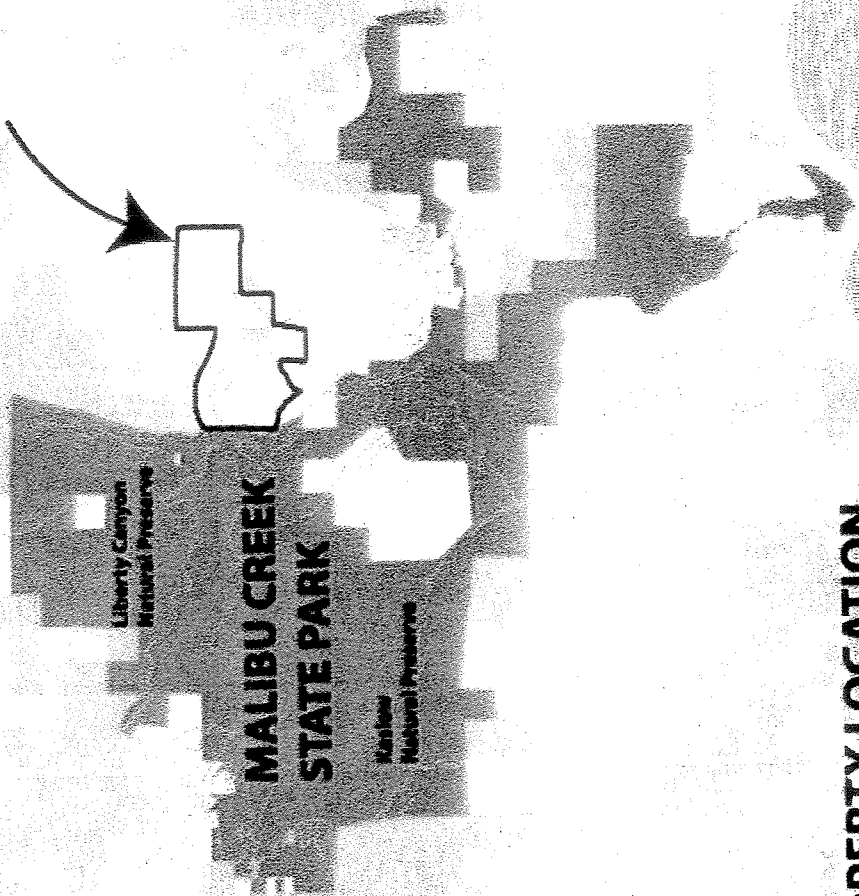




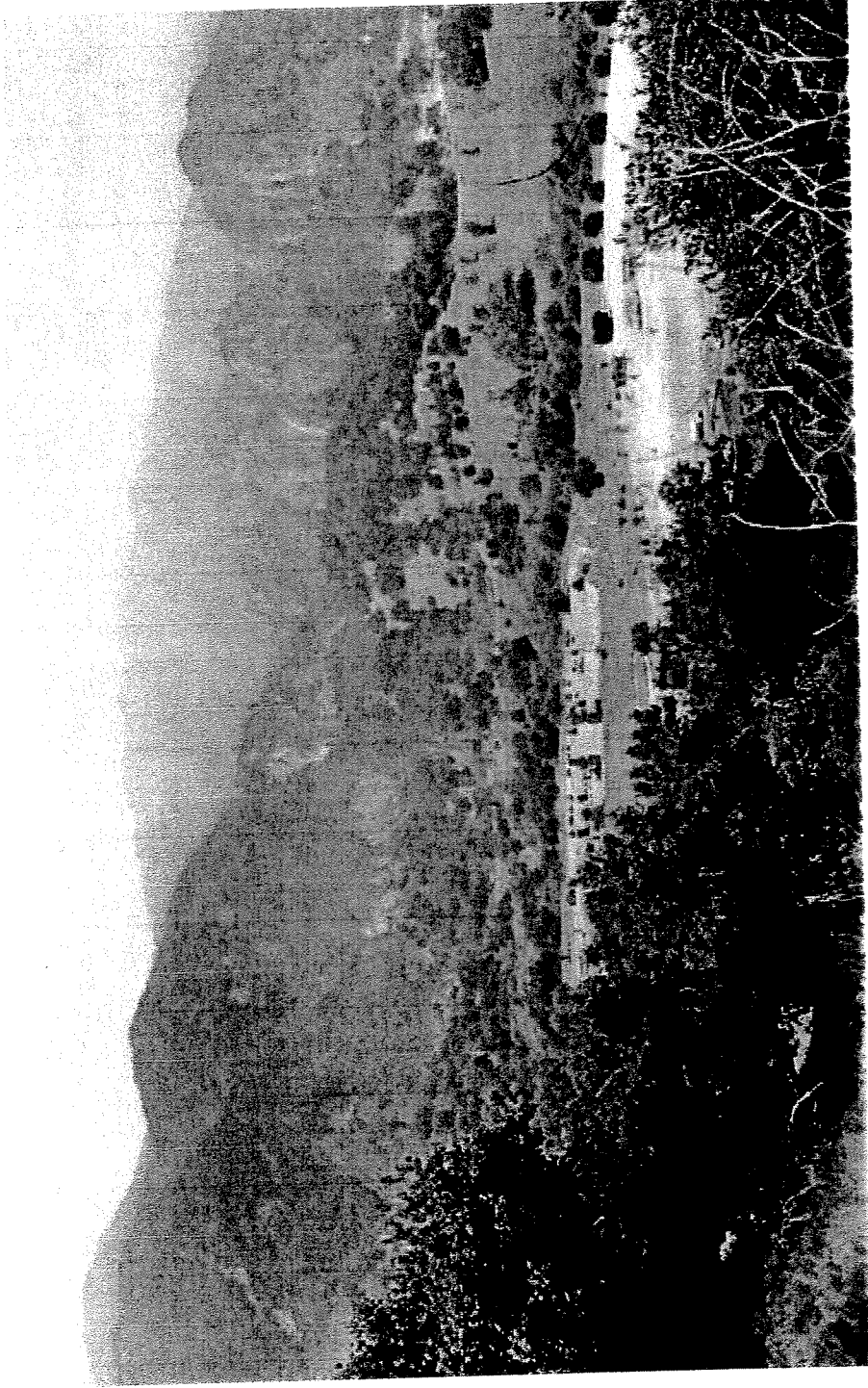
“We looked with envy at the flat open spaces and were impressed by the built in facilities.” Indeed, such recreational facilities were essential “to satisfy the urbanite not desiring the hike-in experiences... There is a critically important interface between Malibu Creek State Park planning and development and the acquisition of Claretville, ...a tremendous need for open space recreation in the Santa Monica Mountains.”

- State Park Planner George O. Rackelmann, 1978 memo

Soka University

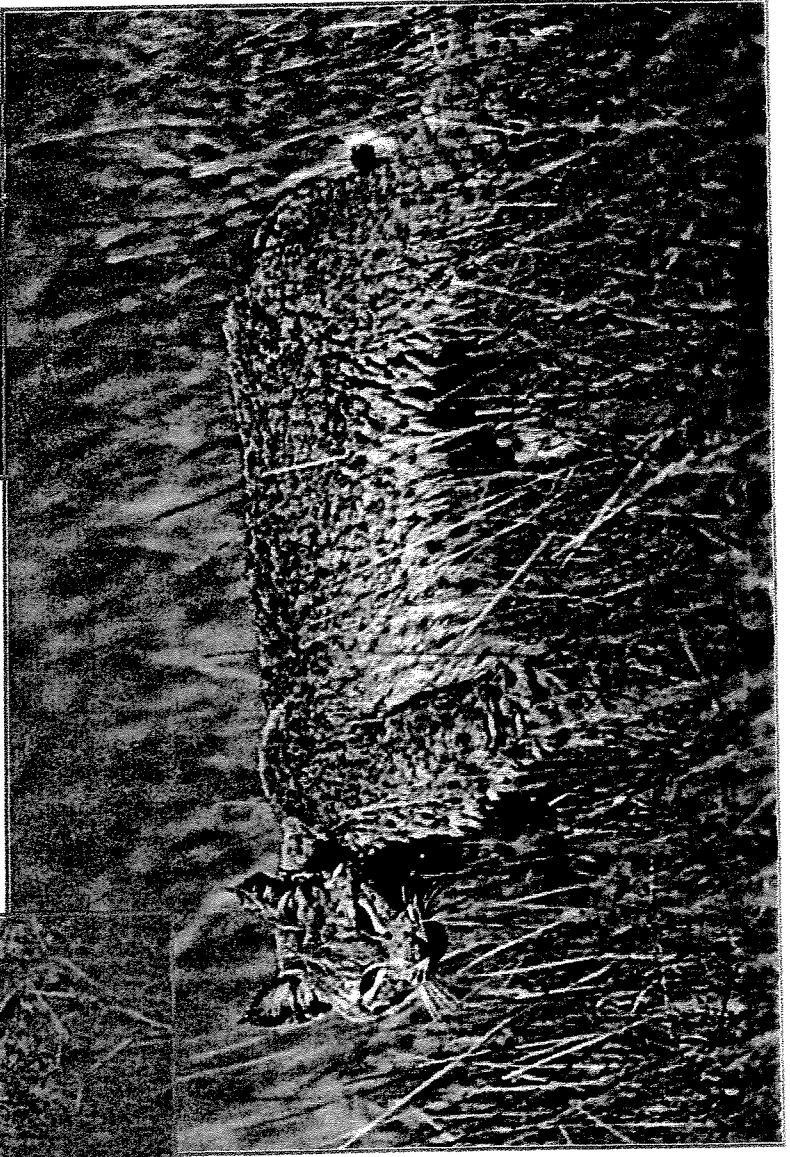
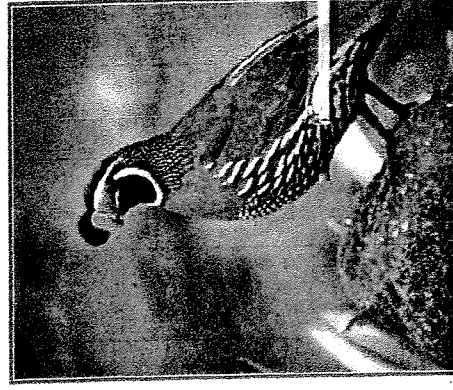
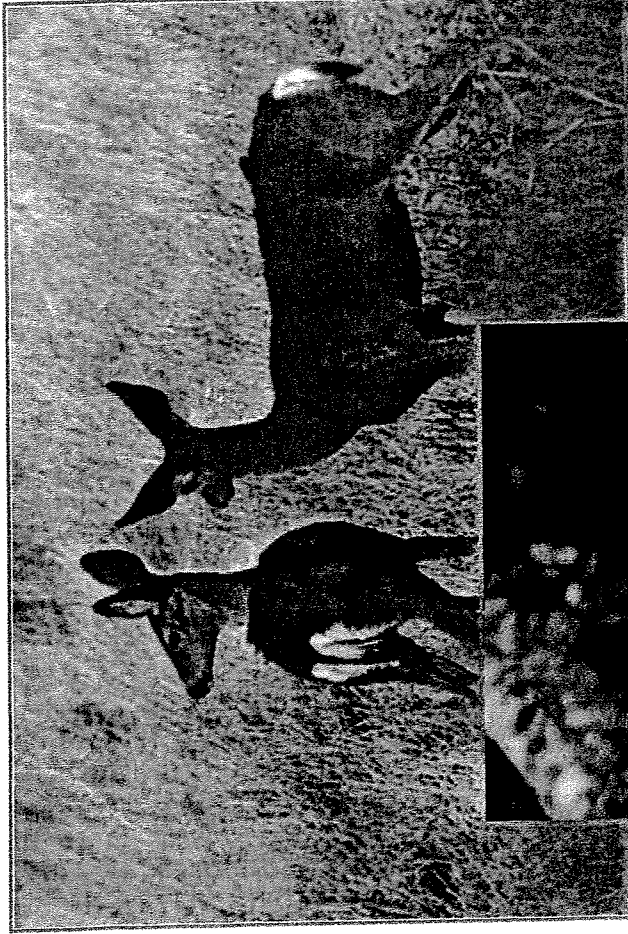


**SOKA UNIVERSITY PROPERTY LOCATION
ALONG EASTERN BOUNDARY OF MALIBU CREEK STATE PARK**



View from prominent knoll on Soka University site looking southwest into Malibu Creek State Park picnic and parking area

**Soka acquisition implements major Wildlife Conservation
Board habitat and watershed objectives**



**Soka University acquisition implements important
State Coastal Conservancy coastal
protection objectives in Propositions 40 and 50**



**Coastal
Conservancy**