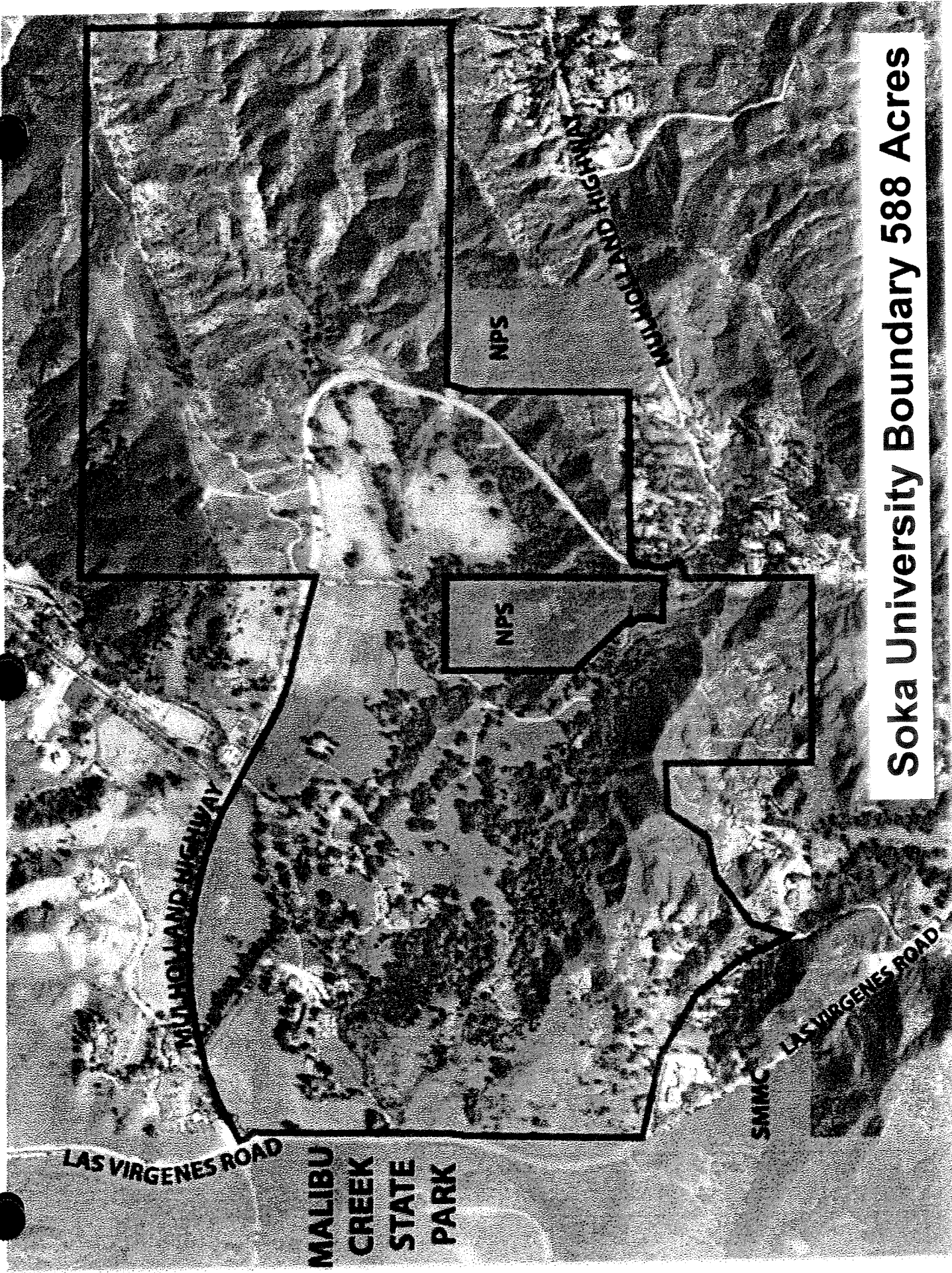


Role of the Santa Monica Mountains Conservancy

- Between 1980 and 1990 supported National Park Service efforts to acquire property.
- 1990-Conservancy obtains Department of General Services (DGS) approved appraisal for \$28.5 million.
- 1992-Mountains Recreation and Conservation Authority initiates condemnation action.
- 1996-Settlement reached allowing for 650 student cap.
- 1998-Project approval overturned by Court of Appeals.
- Spring 2004-Soka becomes willing seller.
- July 2004-Verbal appraisal obtained for \$36 million-updated to 37 million in August 2004 (approved by DGS).



Soka University Boundary 588 Acres

LAS VIRGENES ROAD

**MALIBU
CREEK
STATE
PARK**

NPS

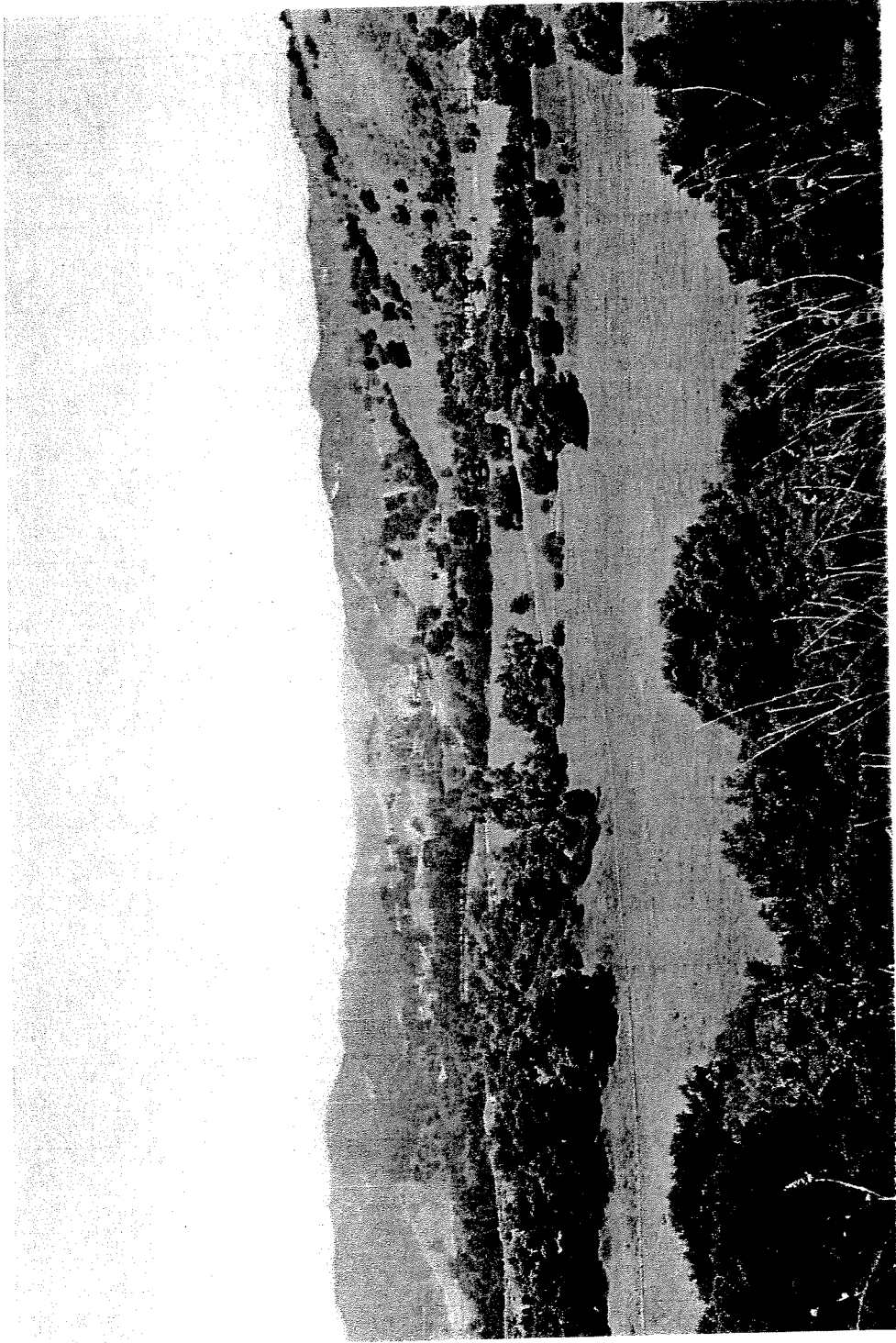
NPS

SMMC

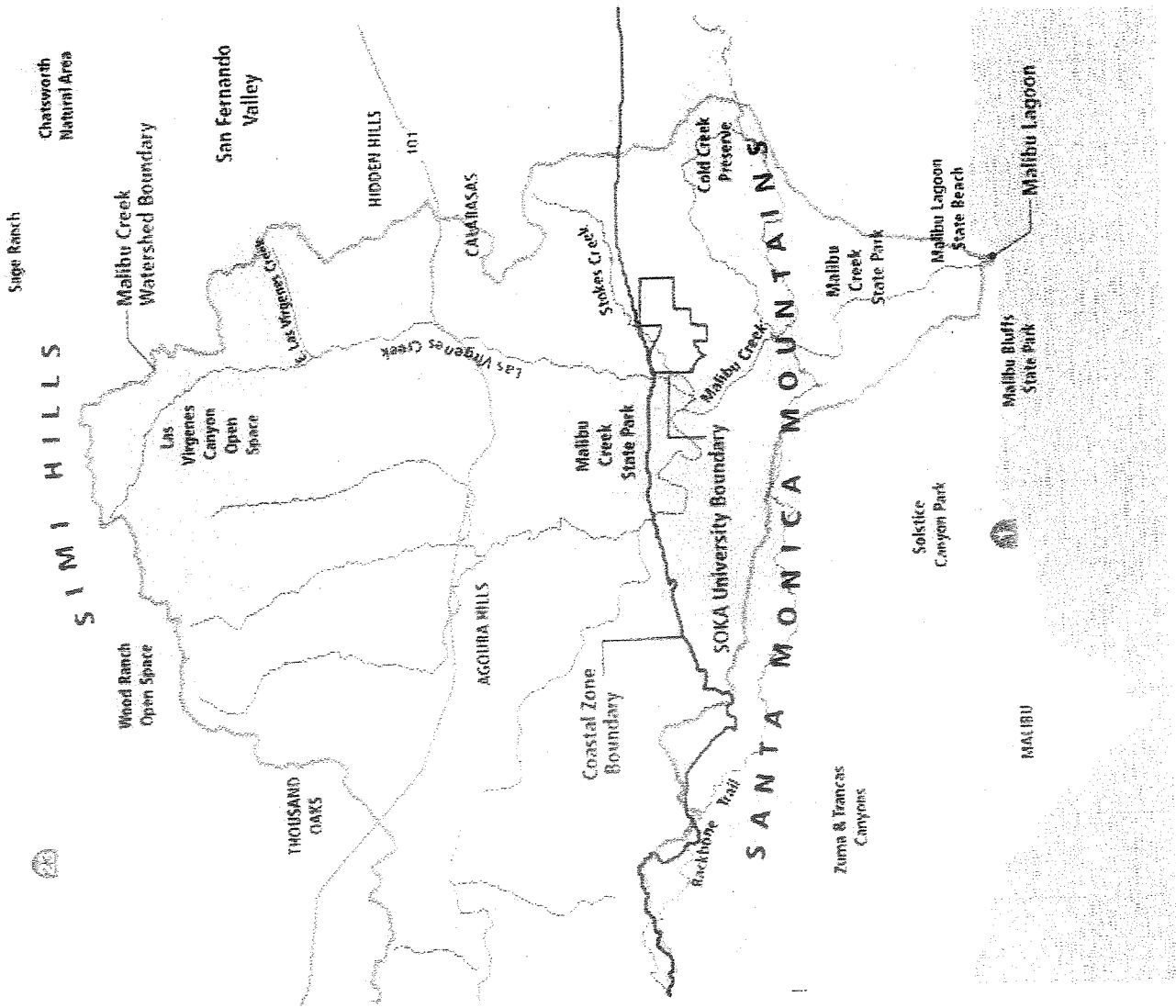
LAS VIRGENES ROAD

MULHOLLAND HIGHWAY

MULHOLLAND HIGHWAY



- **Helps meet the California Fish and Game Commission's policies for land use planning, cooperation, endangered and threatened species, water, wetland resources, and raptors.**
- **The primary responsibilities of the WCB are to select, authorize and allocate funds for the purchase of land and waters suitable for recreation purposes and the preservation, protection and restoration of wildlife habitat.**



Steelhead trout



Tidewater goby



Southwestern pond turtle

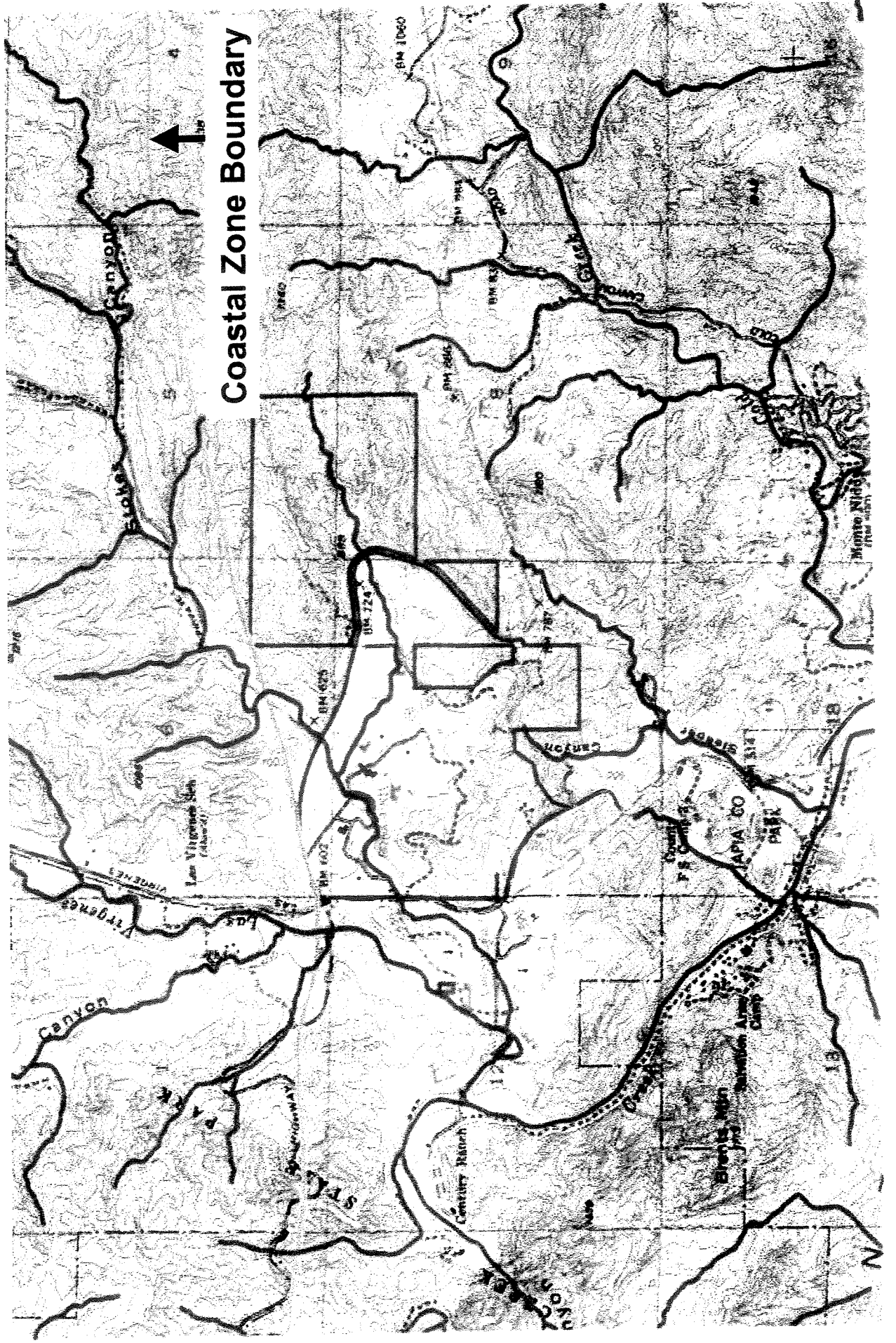
Strategic Location of Soka in the Ecologically Significant Malibu Creek Watershed

Soka University

Major Coastal Zone and Watershed Resources

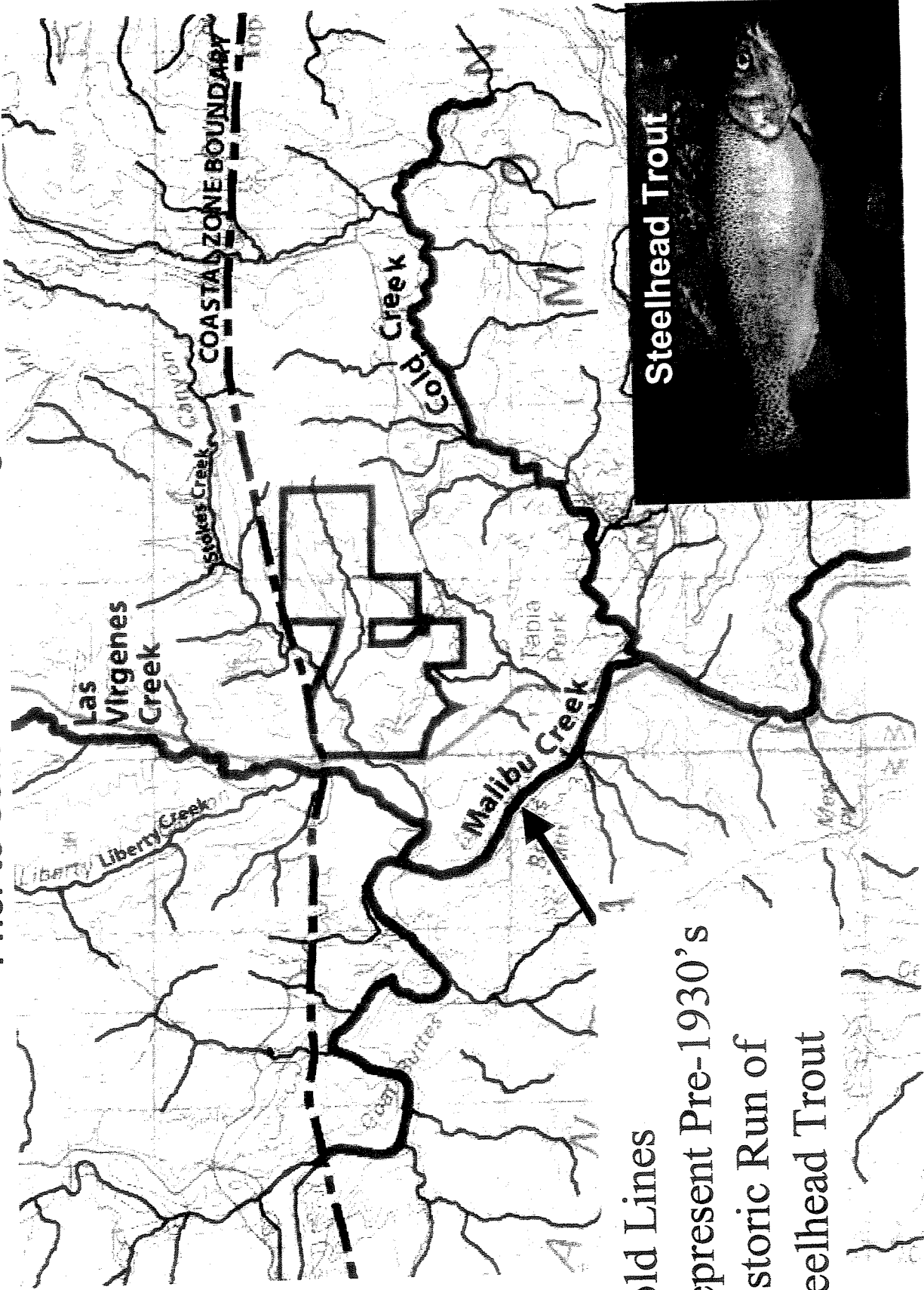
- All of the 588 acres currently offered by Soka University are located within the Coastal Zone.
- The subject property is located in the heart of the ecologically significant Malibu Creek Watershed by the confluence of five major tributaries.
- The southernmost documented population of the genetically unique Southern steelhead trout resides just downstream from the subject property.
- The property is a critical component of the central Santa Monica Mountains habitat linkage hub that contributes to both inter- and intra-mountain range wildlife movement.
- The property is contiguous with Malibu Creek State Park and extends the 15,000-acre State Park Core Habitat Area over 1.5 miles eastward towards Topanga State Park.

Soka University Location at the Confluence of Numerous Malibu Creek Tributaries within Coastal Zone



Historic Run of Southern Steelhead Trout

Prior to Construction of Rindge Dam



Bold Lines
Represent Pre-1930's
Historic Run of
Steelhead Trout



Steelhead Trout

Environmentally Sensitive Habitat Area (ESHA)

Malibu Local Coastal Plan

