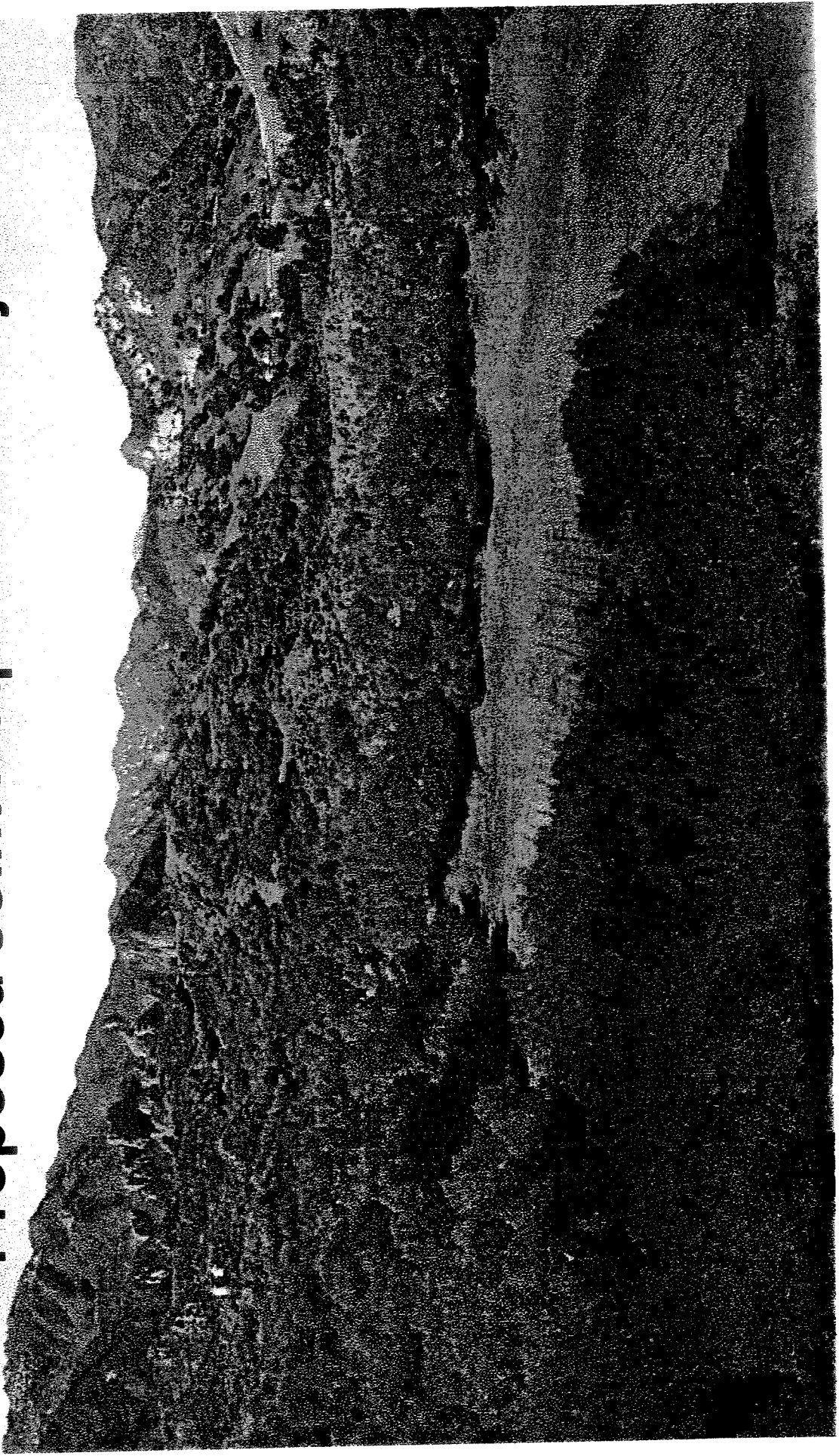


## Soka University Information

# **Soka University / King Gillette Ranch Proposed Joint Acquisition Project**



**Soka University**

**Proposed Joint Acquisition Project**

**Wildlife Conservation Board**

**Santa Monica Mountains Conservancy**

**National Park Service**

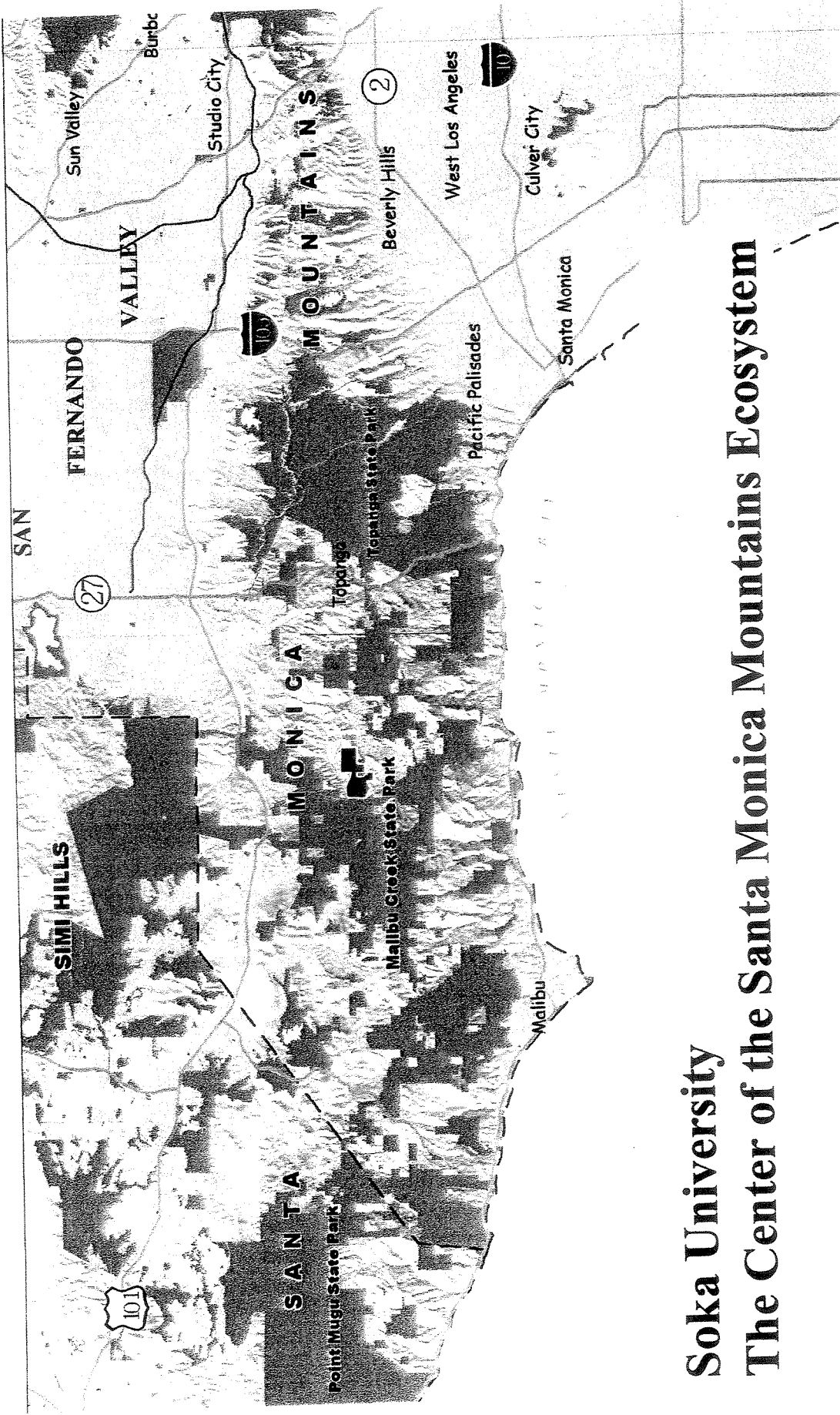
**California State Parks**

**State Coastal Conservancy**

**Santa Monica Bay Restoration Commission**

**Los Angeles County Regional Park & Open Space District**

**City of Calabasas**



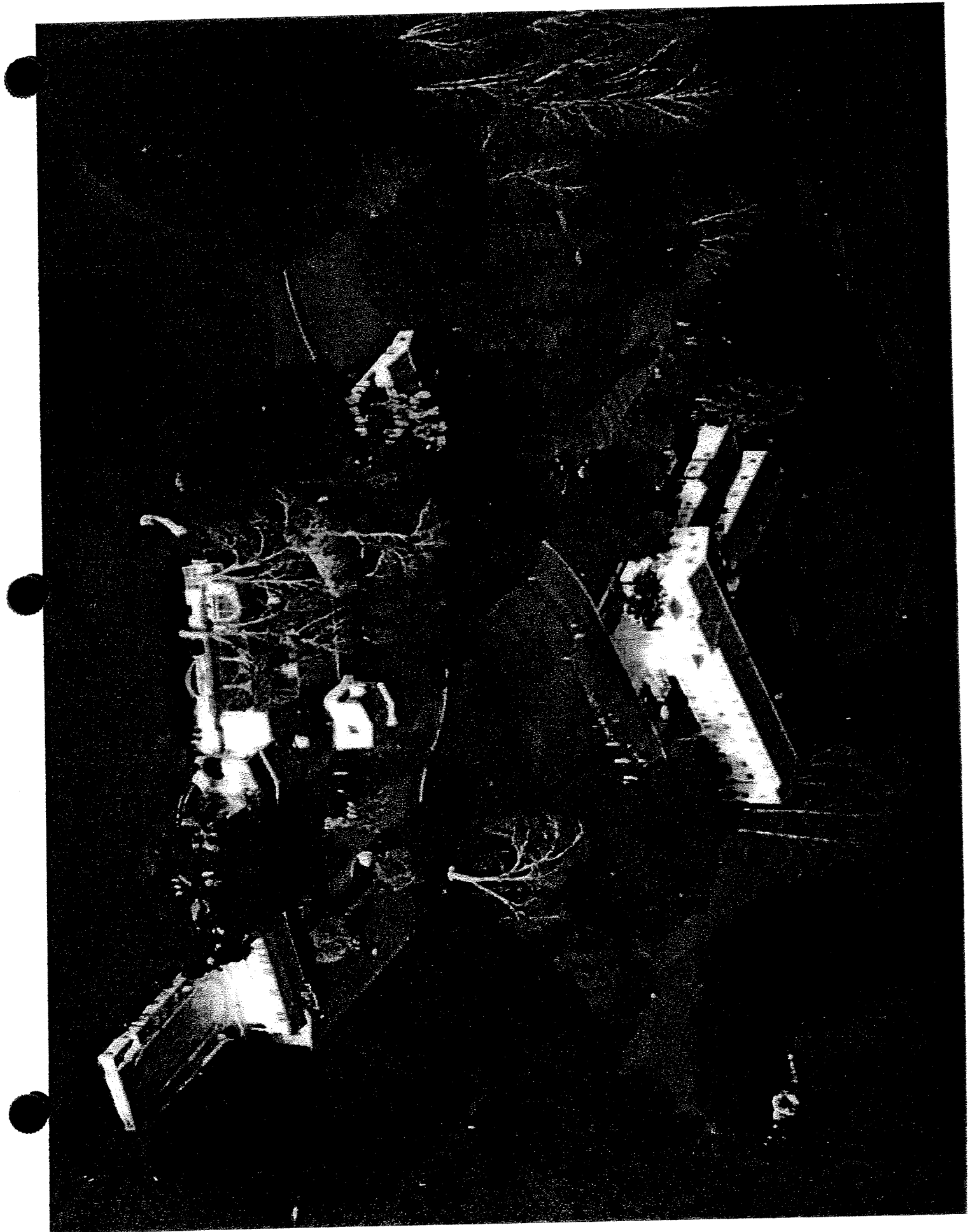
# Soka University

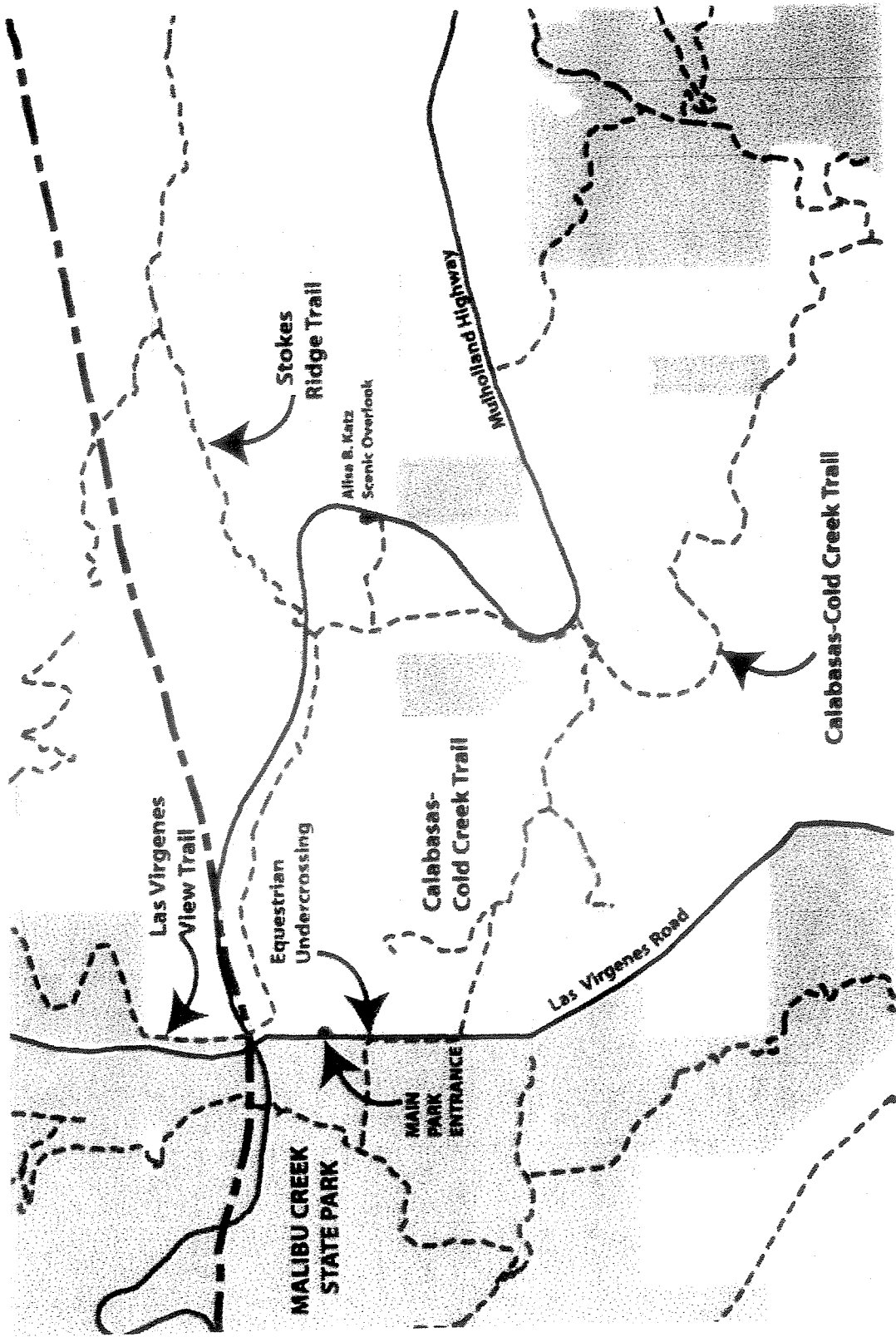
## The Center of the Santa Monica Mountains Ecosystem

## Local Coastal Program-Land Use Plan Policies

P32-Provide a safe trail system throughout the mountain and seashore that can achieve the following:

- Link major recreational facilities
- Link with trail systems of adjacent jurisdictions
- Provide recreational corridors between the mountains and the coast
- Provide for multiple use
- Provide for a diversity of recreational and aesthetic experiences.
- P1-Provide recreational opportunities to meet the variety of recreation demands.
- P170-Encourage the conservation of local resources that have historical value.



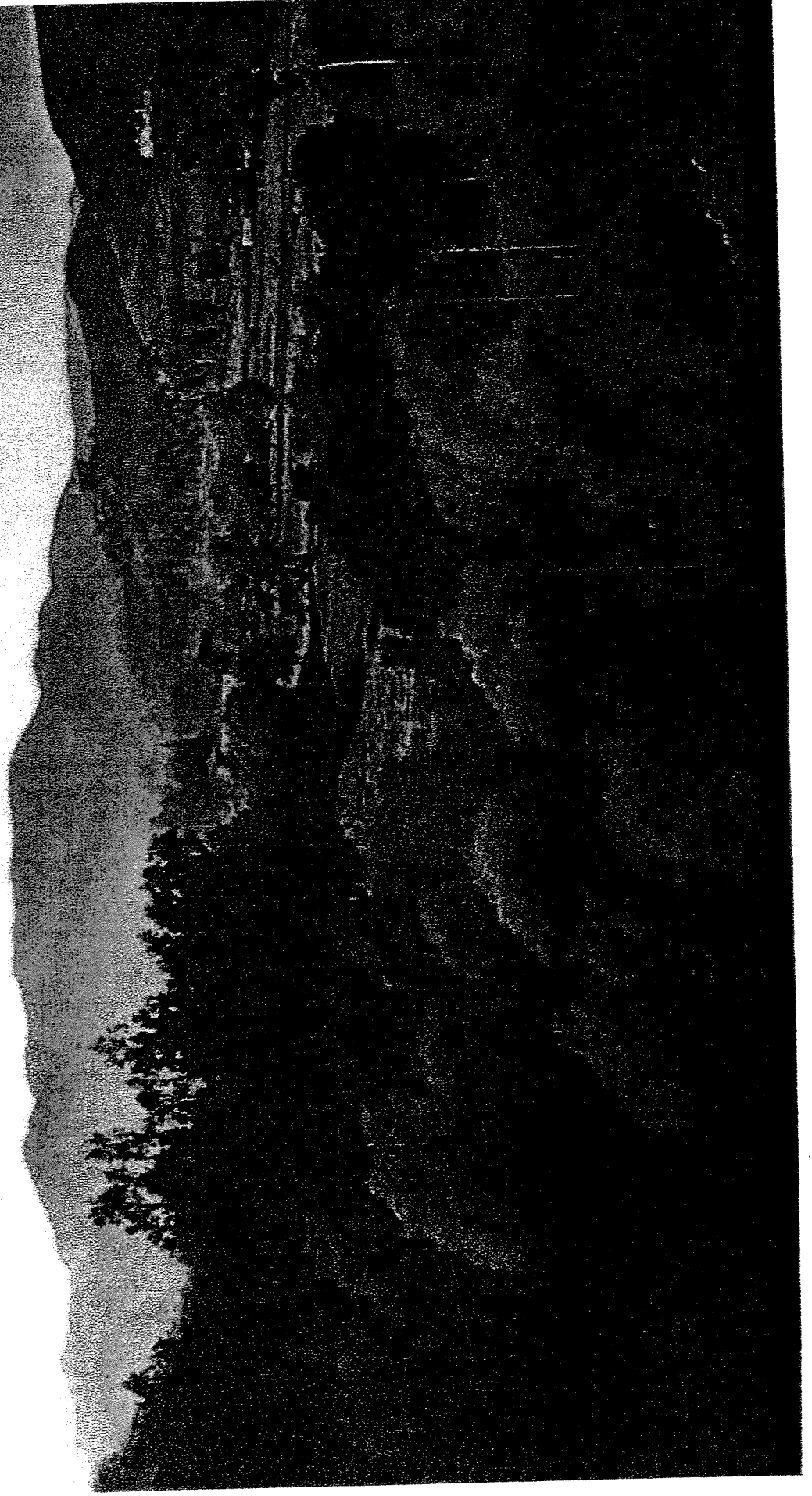


**TRAILS WITHIN AND SURROUNDING SOKA UNIVERSITY PROPERTY**

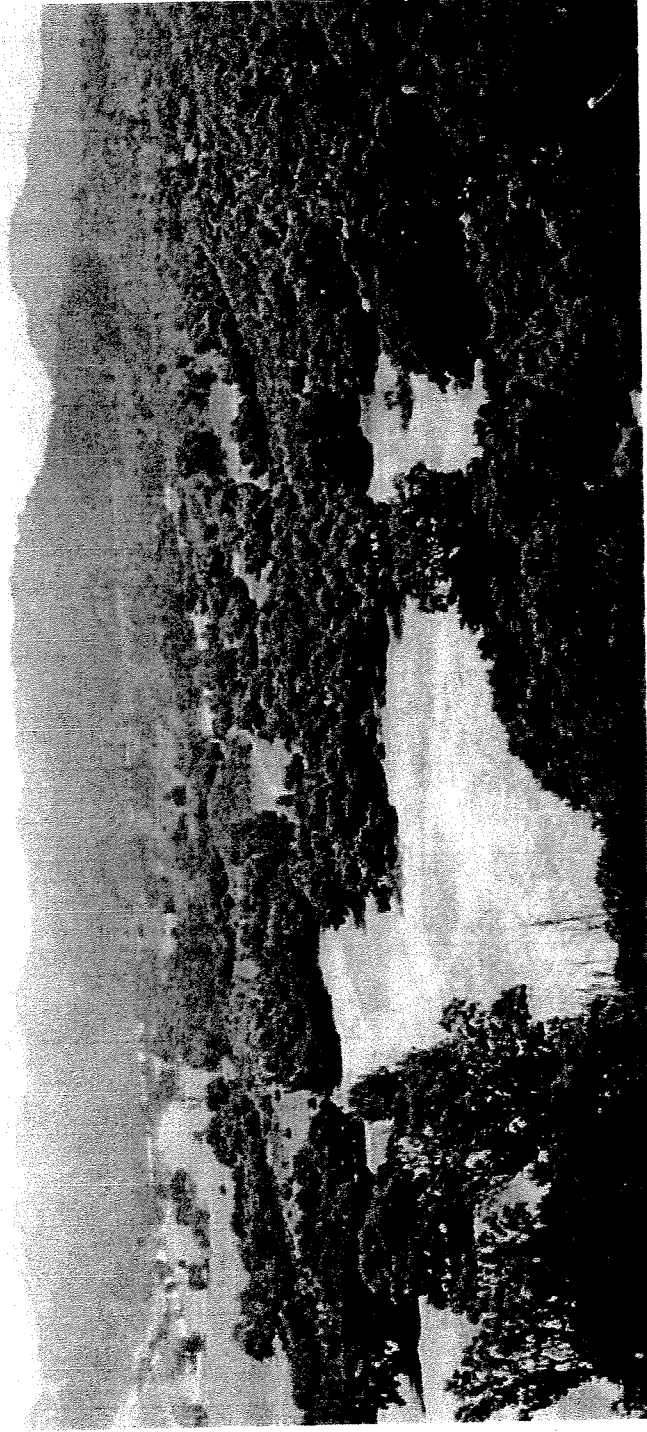
## **Local Coastal Program - Land Use Plan Policies**

**P127-Provide public viewing locations as turnouts along major cross-mountain roads and Mulholland Highway.**

**P132-Maintain the character and value of Mulholland Scenic Corridor, as a scenic and recreational resource connecting public parklands within the Santa Monica Mountains**



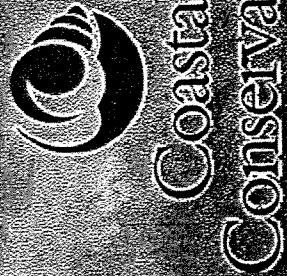




## **Coastal Act of 1976**

**Section 30240 (a) Environmentally sensitive habitat areas shall be protected against any significant disruption of habitat values, and only uses dependent on those resources shall be allowed within those areas.**

**Cooperative planning process for visitor serving facilities  
and resource protection involving the Santa Monica  
Mountains Conservancy, the National Park Service,  
California State Parks, the State Coastal Conservancy and  
the California Department of Fish and Game**



**The National Park Service states:**

**“Few locations in California offer in one setting the opportunity to interpret and understand a cross-section of California’s rich history, including sites, buildings, and other features that represent Native American settlement, Spanish missions and adobes, Mexican ranchos, California homesteading, and WWII military development.”**

