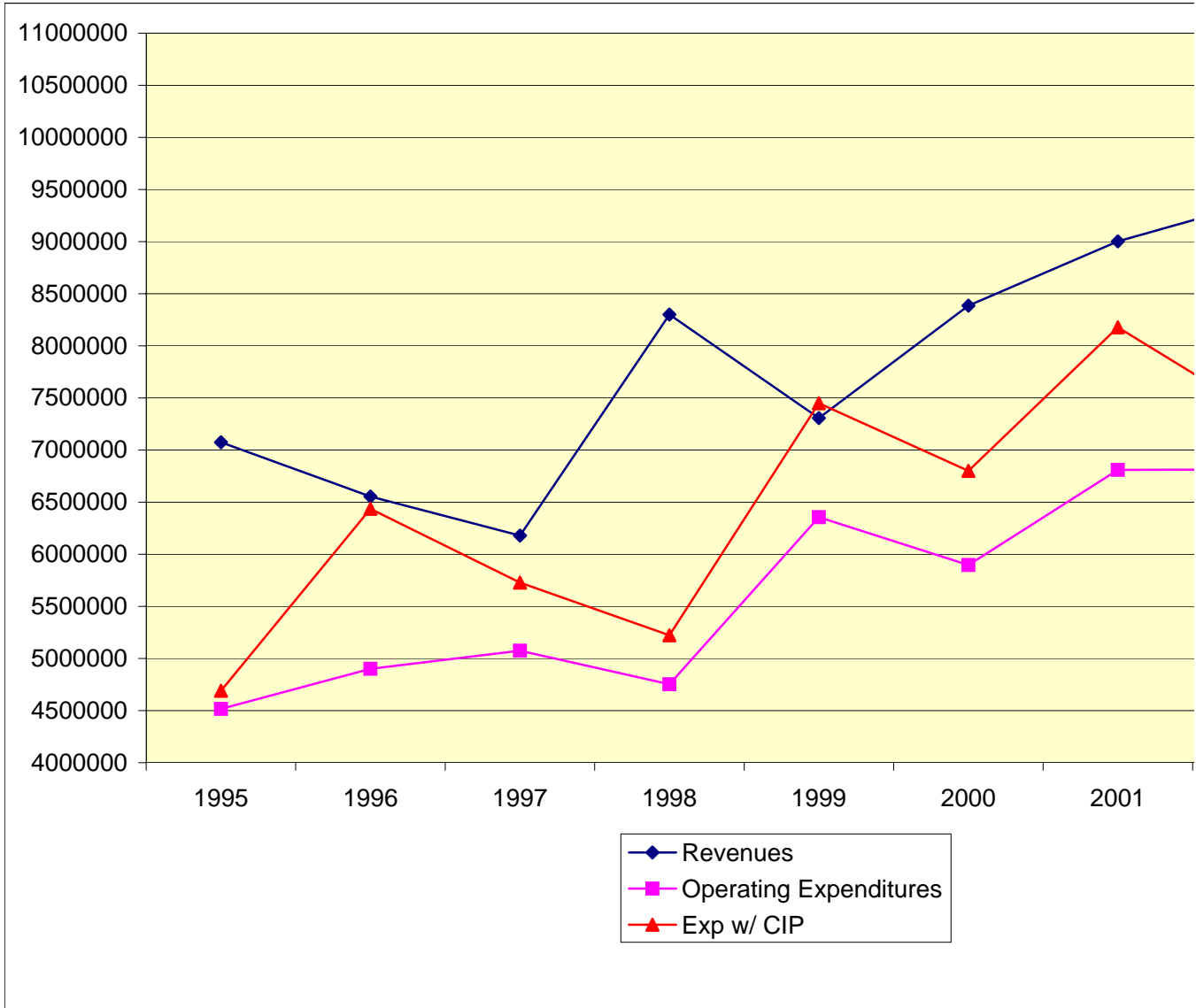
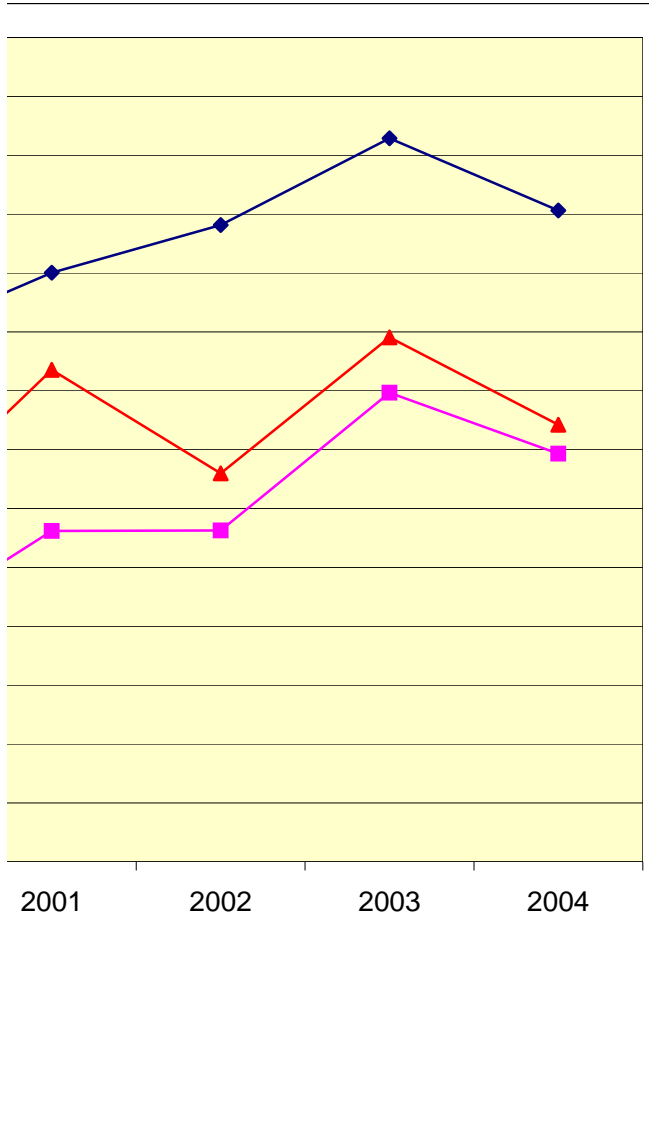


Graphics: Revenues Compared with Expenditures: Last 10 Years



	Revenues
1995	7,074,054
1996	6,554,083
1997	6,179,426
1998	8,300,602
1999	7,307,375
2000	8,385,809
2001	9,002,194
2002	9408147
2003	10143784
2004	9,531,512



Operating Expenditures	Exp w/ CIP
4,515,843	4690654
4,900,371	6436195
5,074,836	5727952
4,753,304	5222768
6,356,588	7450151
5,896,599	6800676
6,810,382	8,178,134
6814333	7,298,482
7983630	8,453,630
7,466,015	7,711,736