

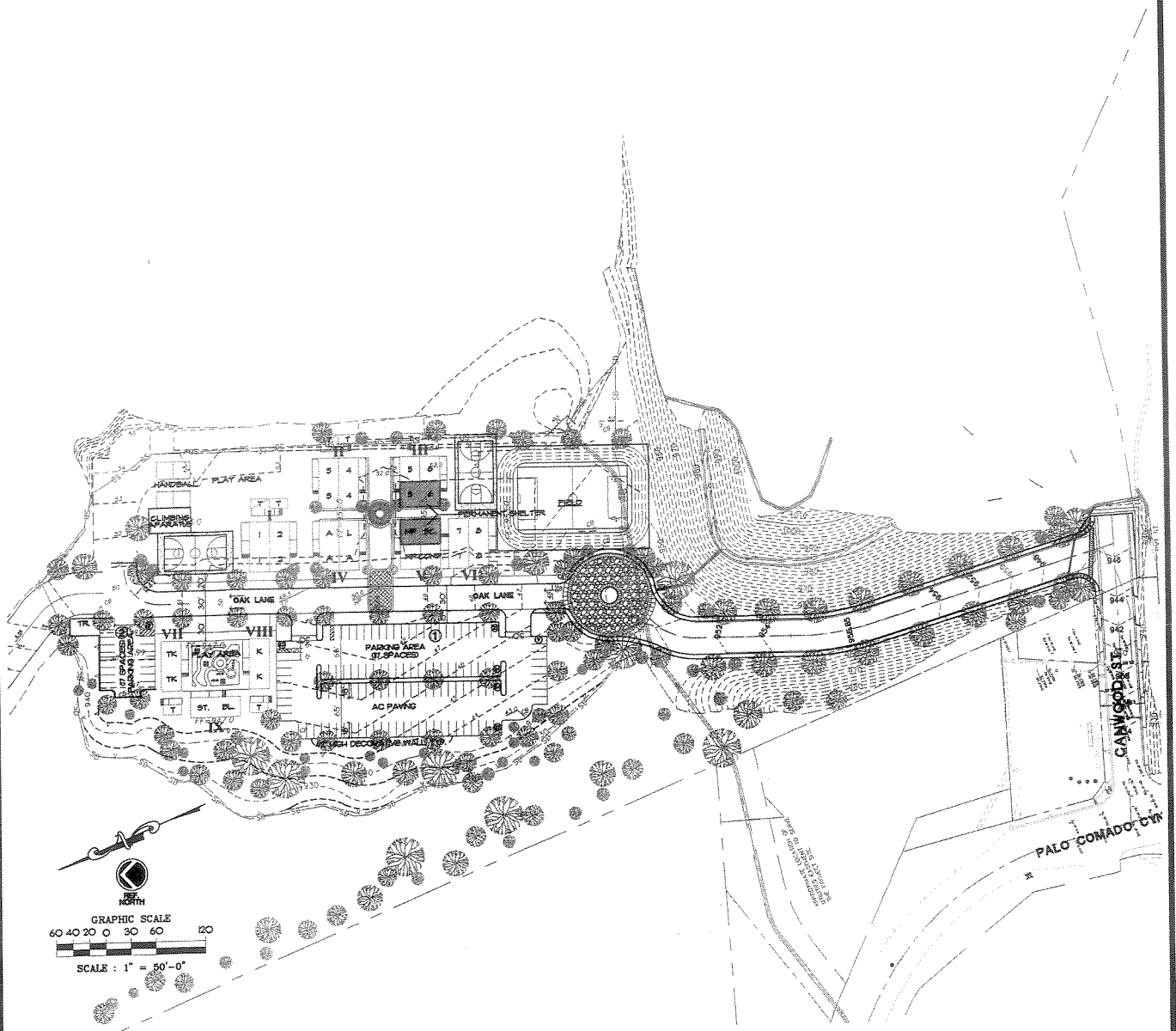
Attachment 6

Phase 1 and 2 Site Plans of the Proposed Project



Abraham Joshua Heschel Day School West

PHASE 1 MODULAR SCHOOL



SITE PLAN

Jack Hollander
& Associates, Inc.
Architects Planning Engineers

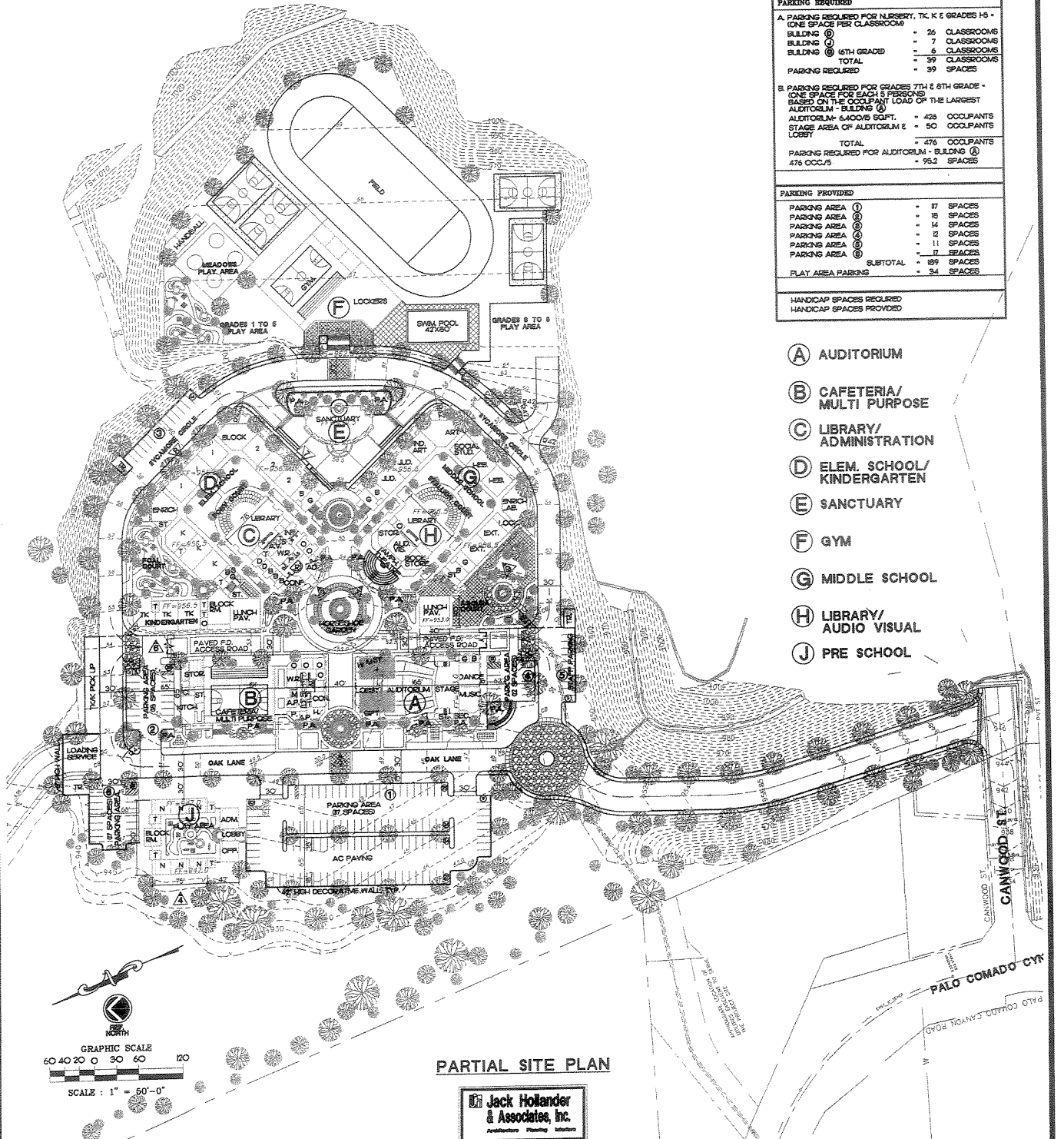


Abraham Joshua Heschel Day School West

LEGEND:	
(A)	BUILDING CALL OUT
(A)	EXTERIOR ELEVATION
(P)	PARKING AREA

PARKING ANALYSIS	
PARKING REQUIRED	
A. PARKING REQUIRED FOR NURSERY, TK, K & GRADES 1-5 (ONE SPACE PER CLASSROOM)	
BUILDING (P)	= 26 CLASSROOMS
BUILDING (P)	= 7 CLASSROOMS
BUILDING (P) 6TH GRADE	= 6 CLASSROOMS
TOTAL	= 39 CLASSROOMS
PARKING REQUIRED	= 39 SPACES
B. PARKING REQUIRED FOR GRADES 7TH & 8TH GRADE (ONE SPACE FOR EACH 5 PERSONS BASED ON THE OCCUPANT LOAD OF THE LARGEST AUDITORIUM - BUILDING (A))	
AUDITORIUM - 6,400 SQ. FT.	= 426 OCCUPANTS
STAGE AREA OF AUDITORIUM & LOBBY	= 50 OCCUPANTS
TOTAL	= 476 OCCUPANTS
PARKING REQUIRED FOR AUDITORIUM - BUILDING (A)	= 95.2 SPACES
476 OCCUPANTS	= 95.2 SPACES
PARKING PROVIDED	
PARKING AREA (P)	= 17 SPACES
PARKING AREA (P)	= 18 SPACES
PARKING AREA (P)	= 14 SPACES
PARKING AREA (P)	= 12 SPACES
PARKING AREA (P)	= 11 SPACES
PARKING AREA (P)	= 12 SPACES
PARKING AREA (P)	= 19 SPACES
SUBTOTAL	= 93 SPACES
PLAY AREA PARKING	= 34 SPACES
HANDICAP SPACES REQUIRED	
HANDICAP SPACES PROVIDED	

- (A) AUDITORIUM
- (B) CAFETERIA/ MULTI PURPOSE
- (C) LIBRARY/ ADMINISTRATION
- (D) ELEM. SCHOOL/ KINDERGARTEN
- (E) SANCTUARY
- (F) GYM
- (G) MIDDLE SCHOOL
- (H) LIBRARY/ AUDIO VISUAL
- (J) PRE SCHOOL



PARTIAL SITE PLAN

Jack Hollander & Associates, Inc.
 Architects Planning Interiors