

REPORT TO CITY COUNCIL

DATE: OCTOBER 27, 2021

TO: HONORABLE MAYOR AND MEMBERS OF THE CITY COUNCIL

FROM: NATHAN HAMBURGER, CITY MANAGER

BY: CHARMAINE YAMBAO, ACTING CITY ENGINEER

SUBJECT: DISCUSSION ON THE ADVANCED CONCEPTUAL DESIGN PLANS FOR THE KANAN ROAD/AGOURA ROAD ULTIMATE INTERSECTION IMPROVEMENTS PROJECT

This item discusses the Advanced Conceptual Design Plans for the Kanan Road / Agoura Road Ultimate Intersection Improvement (Project), provides three (3) design options for the gateway monument, requests City Council direction to begin the final design stage of the Project and to finalize Project footprint for environmental analysis.

On August 26, 2020, the City Council approved the final design alignment of the Project. The approved alignment provided for the proposed right-of-way (ROW) limits for the ultimate intersection design and conserved the two native oak trees on the northwest corner of the intersection. Later, in November 2020, the design was further modified to save the one mature oak tree on the southwest corner of the intersection, successfully saving all of the mature oak trees at the intersection of Kanan and Agoura Roads.

In October 2020, the City Council amended Kimley-Horn and Associate's (KHA) design contract to complete the Project final design. Based on the past project experience, an "advanced conceptual design phase" was included, breaking down the final design into two phases. The purpose of the conceptual design phase was to define critical elements in more detail, such as landscape/hardscape areas and activation options for each corner. This phase allows the City to ensure the aesthetic elements of the project are designed to be consistent with the Agoura Village Specific Plan (AVSP) and the feedback received from City Council when the project was presented at its May 22, 2019, meeting. Ultimately, this phase will establish the project footprint in order to move forward with the Supplemental Environmental Impact Report (SEIR) for the Project. The SEIR will analyze the change in the AVSP project description to remove the roundabout and replace it with the Kanan Road/Agoura Road Ultimate Intersection Improvement Project.

In April and September 2021, staff presented an update on the Project to the Public Works Subcommittee, who considered and provided feedback on five aesthetic elements of the Advanced Conceptual Design Plans, a) Gateway Monument, b) AVSP logo, c) Pilasters/Towers, d) Northwest Corner Activation, and e) Kanan Road Undergrounding and Lighting. The first four elements were discussed by the City Council at its May 22, 2019, meeting, and the fifth item was a new element to the project.

Exhibit A below details the proposed direction for each of the aesthetic elements, based on feedback received from City Council at its May 22, 2019, meeting and the subsequent Public Works Subcommittee meetings.

Exhibit A: Aesthetic Elements

Aesthetic Element	Proposed on Advanced Conceptual Design Plan
Gateway Monument	<ul style="list-style-type: none"> • Mix of natural materials • Slight asymmetrical setting • Located closer to AVSP area • Eastside monument embedded on side of hill, no oaks trees • Westside monument with oak trees • Wording only on face of monument as vehicle approaches
AVSP Logo	<ul style="list-style-type: none"> • Design removed from Project scope • Redesign through AVSP update • Incorporate during construction, if approved as part of AVSP update and Council directs
Pilasters/Towers	<ul style="list-style-type: none"> • Design removed from Project scope • Redesign through AVSP update • Remove the location at Kanan/Southbound 101 interchange due to safety concerns • Remove from corners of intersection to maximize space for pedestrian pathway and corner activation • Include 3 remaining tower footprints on the Project plans for environmental study and ROW take • Incorporate during construction, if approved as part of AVSP update and Council directs
Northwest Corner Activation	<ul style="list-style-type: none"> • Expand project footprint to utilize additional area made available by pushing curb line south to save oaks • Add active uses for “activation” • Add midblock access to shopping center • Color palette “modern rustic”
Kanan Road Undergrounding and Lighting	<ul style="list-style-type: none"> • Underground aboveground lines • Existing lighting to remain

The Advanced Conceptual Design Plans are at final draft stage. Staff has incorporated the feedback shown in Exhibit A into the design and, included as part of the Conceptual

Design Plans, are three (3) options for the Gateway Monument for City Council consideration and direction.

Staff is recommending that City Council provide direction on the Advanced Conceptual Design Plans, which will finalize Project footprint for environmental analysis, and approval to begin the final design stage (Plans, Specifications and Estimate).

Exhibit B below provided summary details of the Advanced Conceptual Design Plans (attached) for City Council’s consideration.

Exhibit B: Advanced Conceptual Design Features

Design Plan Sheet	Proposed Features and Details
Overall Site Plan (Pages 2-3)	<ul style="list-style-type: none"> • Defines Project Footprint • Monument Footprint and location • Pilaster/Tower Footprint and location
Intersection Improvements Design (Page 4)	<ul style="list-style-type: none"> • Proposed Roadway improvements • Additional right turn pockets at west and south legs • Striping (traffic, bike and pedestrian crossing) • Dual Curb Ramps • Relocation of Traffic Signal Poles and traffic signal cabinets • Undergrounding of overhead lines
Overall Rendered Site Plan (Page 5)	<ul style="list-style-type: none"> • Proposed Aesthetic Elements • Protected 3 heritage oak trees • “Greenway” with seatwalls • Activated NW Corner with terraced plaza • Widened Pedestrian pathways with decorative tree wells • Midblock connection to shopping center
Greenway Section (Page 6)	<ul style="list-style-type: none"> • Active uses of “Greenway”
Northwest Corner Rendering (Page 7)	<ul style="list-style-type: none"> • Activation of NW Corner into shopping center with terraced plaza • Flagstone • Dual Curb Ramps
Northeast Corner Rendering (Page 8)	<ul style="list-style-type: none"> • Widened sidewalk of NE Corner with decorative tree wells and accent trees • Relocation of traffic signal cabinets
Northwest Corner Seat Wall Rendering (Page 9)	<ul style="list-style-type: none"> • Detail of the seated wall, wider sidewalk and terraced plaza
Gateway Monument Concepts (Pages 10-13)	<ul style="list-style-type: none"> • 3 concepts (A, B, and C) with rendering perspectives from NB and SB Kanan

	<ul style="list-style-type: none"> • location just north of Kanan/Cornell intersection • Message only on one side, facing oncoming vehicles (only shown with Concept C) • Slightly offset (Only shown with Concept C)
--	--

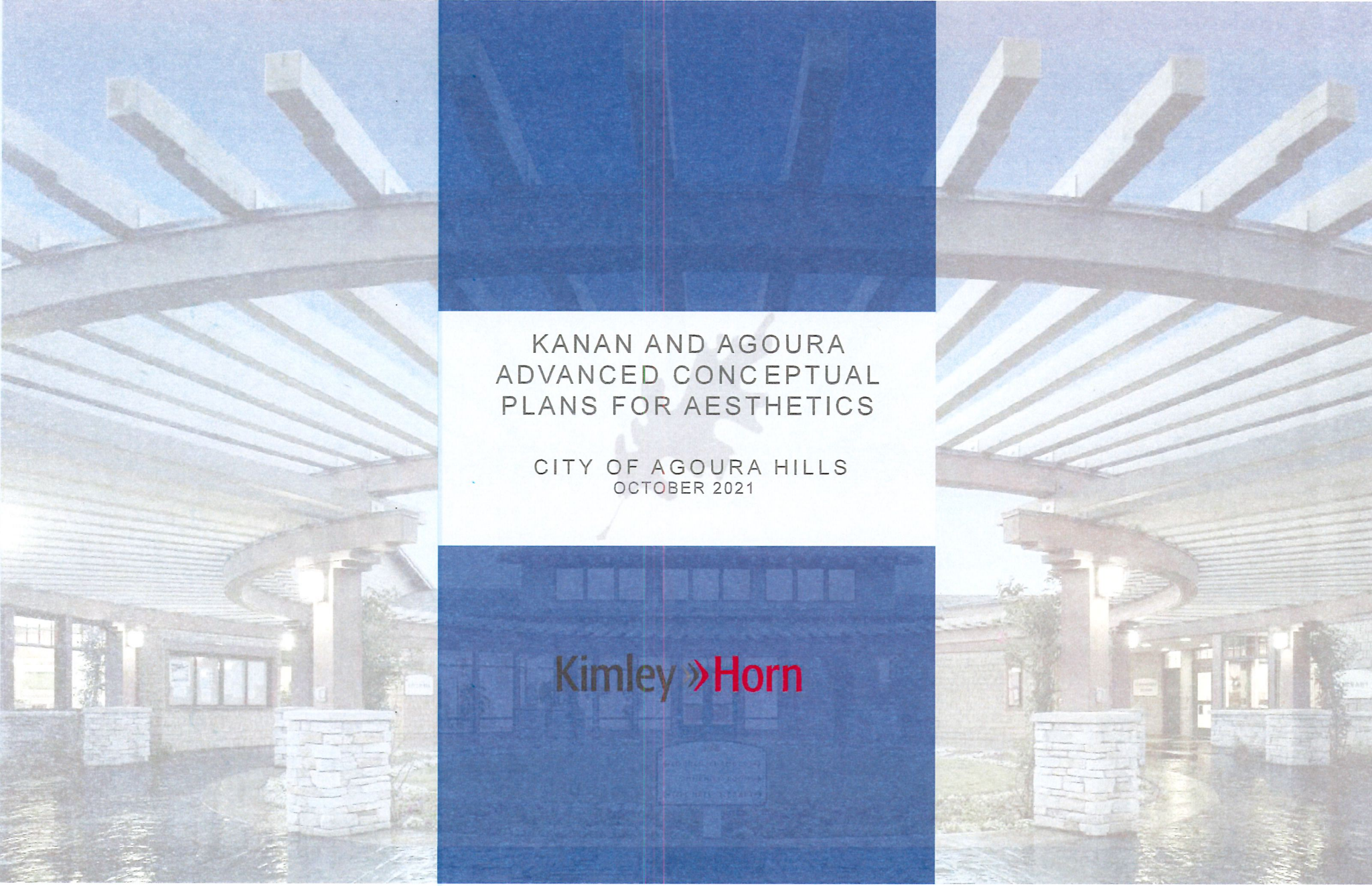
The intersection of Kanan Road and Agoura Road is important to the safe and orderly development of the AVSP area. The existing and proposed land uses, approved as part of the AVSP, are the driving force behind the design of the ultimate intersection improvements. With the steady increase in activity by developers looking to deliver projects in the AVSP area, it is imperative that City staff have the ability to condition developer's frontage improvements in accordance with an approved design plan.

Staff anticipates that final design will take approximately 2 months and the environmental document will require approximately 7-8 months to complete. It is worth noting that the completion of the SEIR may be in advance of the future AVSP update, which is currently underway.

RECOMMENDATION

Staff respectfully recommends the City Council provide direction on the Advanced Conceptual Design Plans to finalize project footprint for CEQA analyses of the Kanan Road/Agoura Road Ultimate Intersection Improvements Project, and direct staff to proceed with the final design of the Project.

Attachments: Advanced Conceptual Design Plans

The image is a cover page for a report. It features a central white rectangular area with text, flanked by two vertical panels of a blue-tinted architectural rendering. The rendering shows a modern building with a prominent pergola structure made of thick, light-colored beams. The ground is wet, reflecting the sky and the building. The overall aesthetic is clean and professional.

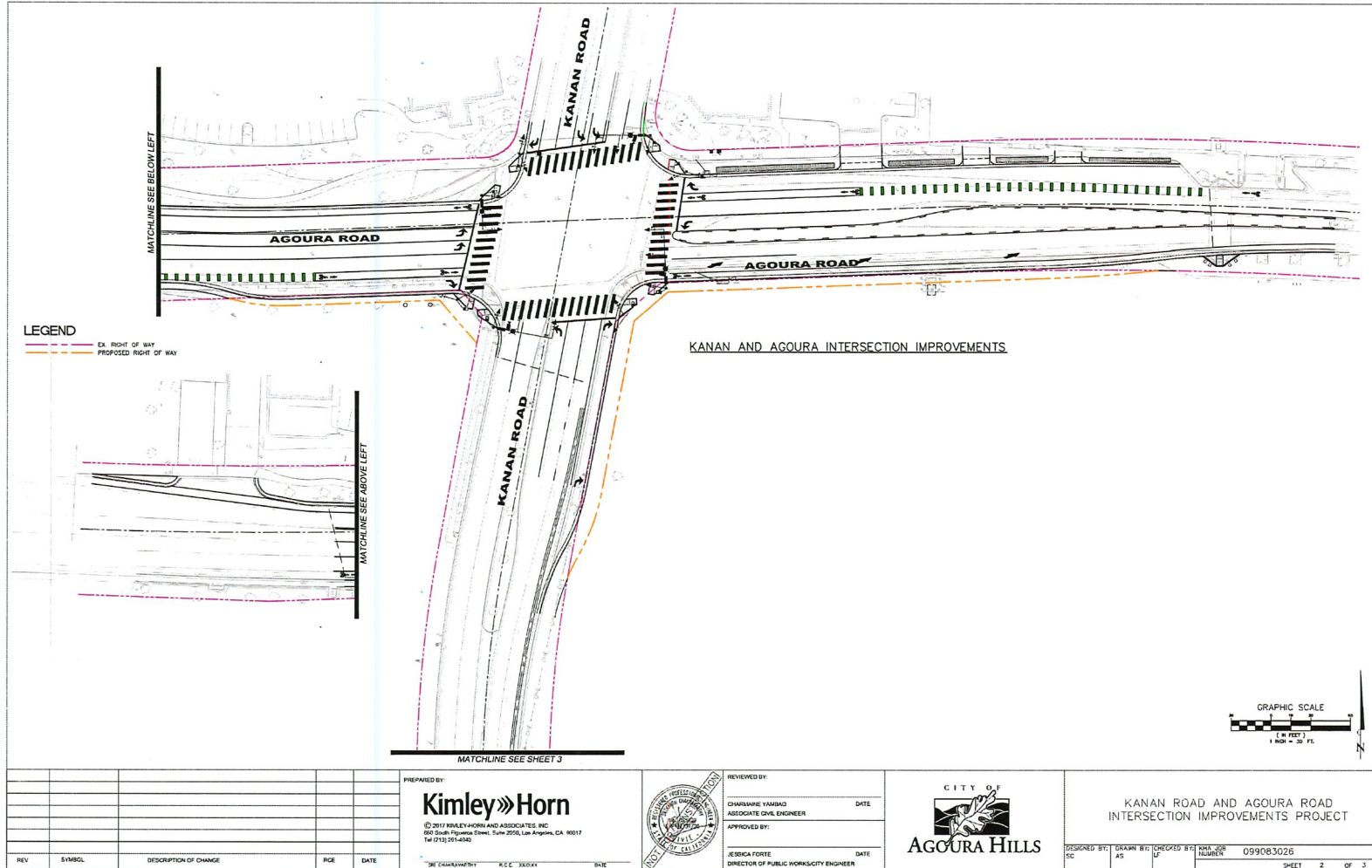
KANAN AND AGOURA
ADVANCED CONCEPTUAL
PLANS FOR AESTHETICS

CITY OF AGOURA HILLS
OCTOBER 2021

Kimley » Horn

OVERALL SITE PLAN

KANAN AND AGOURA ADVANCED CONCEPTUAL PLANS FOR AESTHETICS
CITY OF AGOURA HILLS



REV	SYMBOL	DESCRIPTION OF CHANGE	DATE

PREPARED BY:
Kimley»Horn
© 2017 KIMLEYHORN AND ASSOCIATES, INC.
600 South Figueroa Street, Suite 2050, Los Angeles, CA 90017
Tel (713) 261-4542



REVIEWED BY:
CHARISANE YAMBAO
ASSOCIATE CIVIL ENGINEER
DATE
APPROVED BY:
JESSICA FORTE
DIRECTOR OF PUBLIC WORKS/CITY ENGINEER
DATE



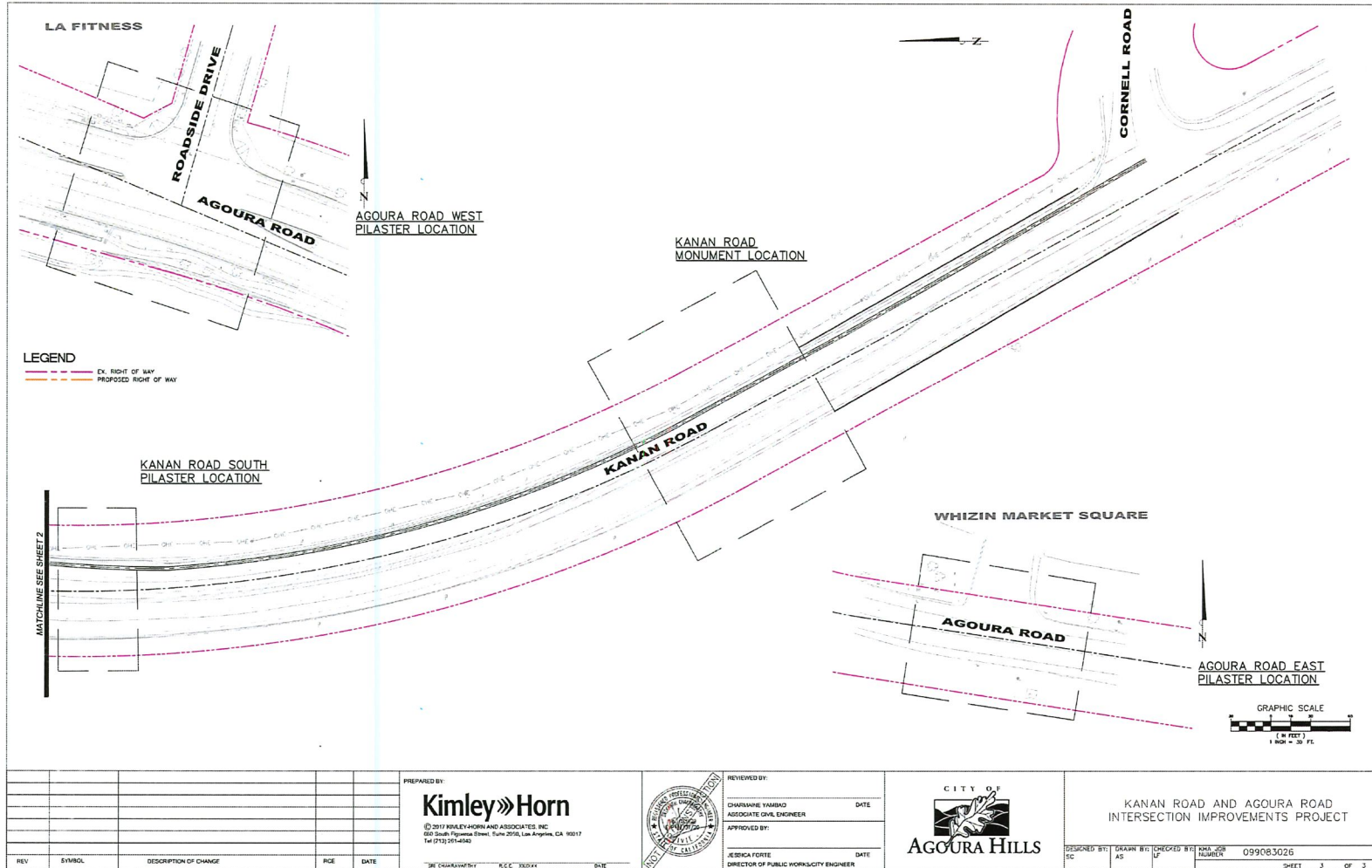
KANAN ROAD AND AGOURA ROAD
INTERSECTION IMPROVEMENTS PROJECT

DESIGNED BY: SC	DRAWN BY: AS	CHECKED BY: LF	DATE: 09/08/2026
--------------------	-----------------	-------------------	---------------------

SHEET 2 OF 3

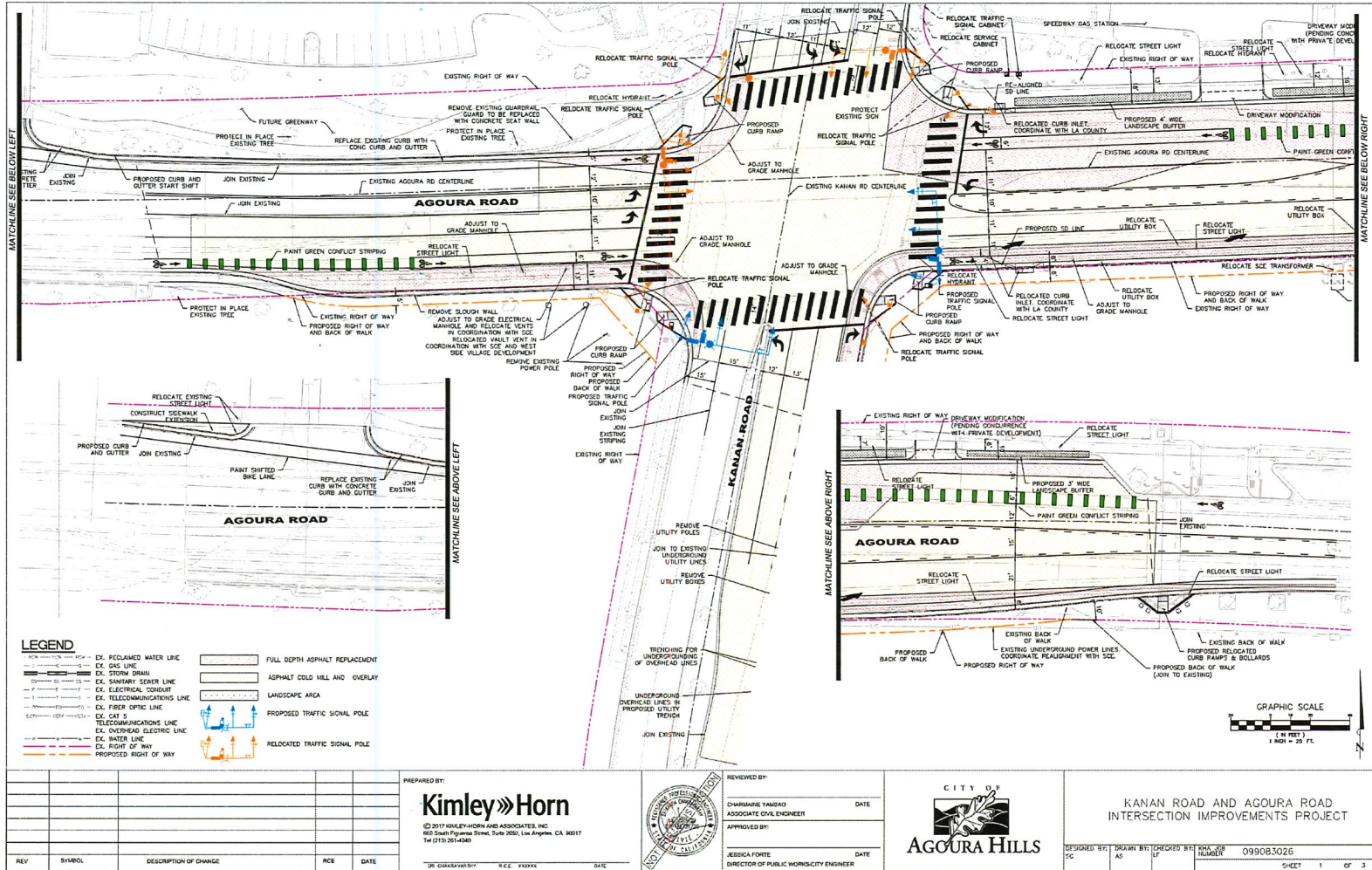
OVERALL SITE PLAN

KANAN AND AGOURA ADVANCED CONCEPTUAL PLANS FOR AESTHETICS
CITY OF AGOURA HILLS



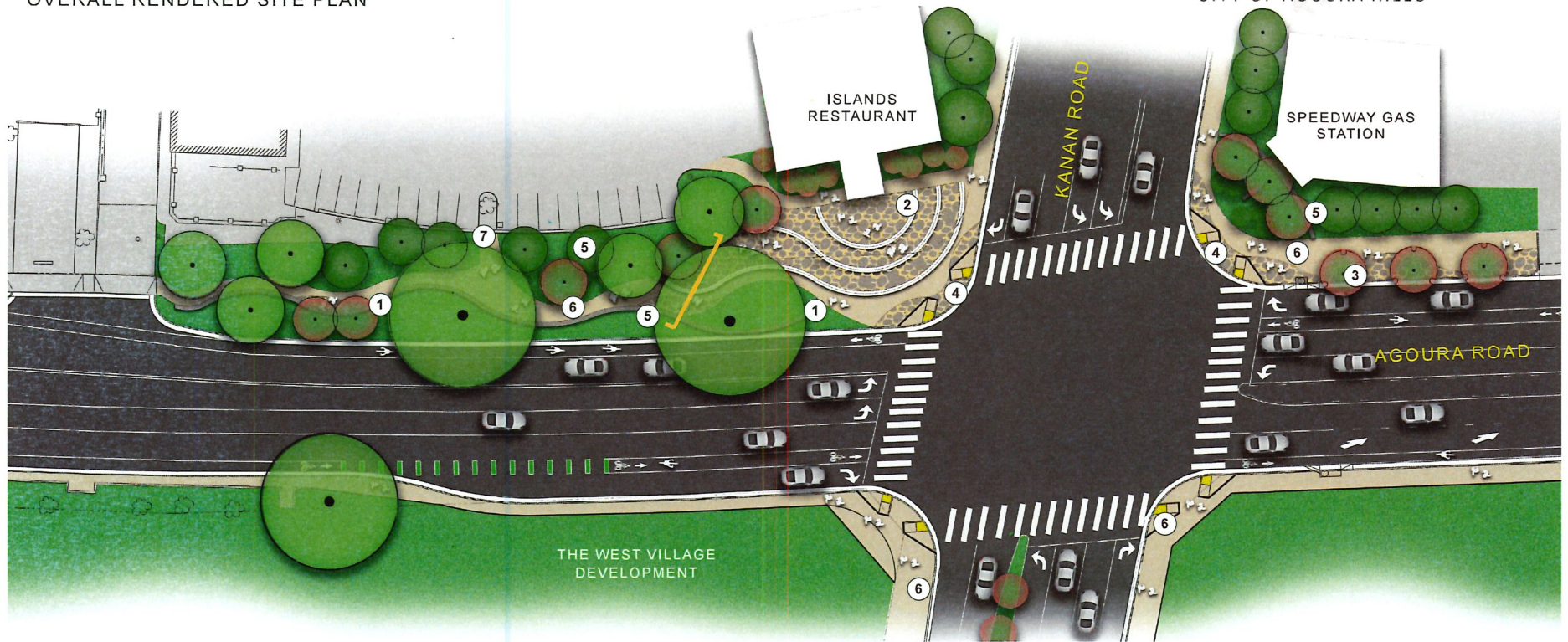
OVERALL SITE DESIGN

KANAN AND AGOURA ADVANCED CONCEPTUAL PLANS FOR AESTHETICS
CITY OF AGOURA HILLS



KANAN AND AGOURA ADVANCED CONCEPTUAL PLANS FOR AESTHETICS CITY OF AGOURA HILLS

OVERALL RENDERED SITE PLAN



SEATWALL



FLAGSTONE PAVERS



TERRACED PLAZA



TREE GRATE



ACCENT TREE

LEGEND

- ① SEATWALL/GUARDRAIL
- ② TERRACED PLAZA
- ③ TREE GRATES
- ④ FLAGSTONE PAVERS
- ⑤ LANDSCAPE BUFFER EXISTING AND PROPOSED TREES
- ⑥ PEDESTRIAN PATH
- ⑦ PARKING LOT CONNECTION



GRAPHIC SCALE
PLANS NOT PRINTED TO SCALE

GREENWAY SECTION ENLARGEMENT

KANAN AND AGOURA ADVANCED CONCEPTUAL PLANS FOR AESTHETICS
CITY OF AGOURA HILLS



NORTHWEST CORNER RENDERING



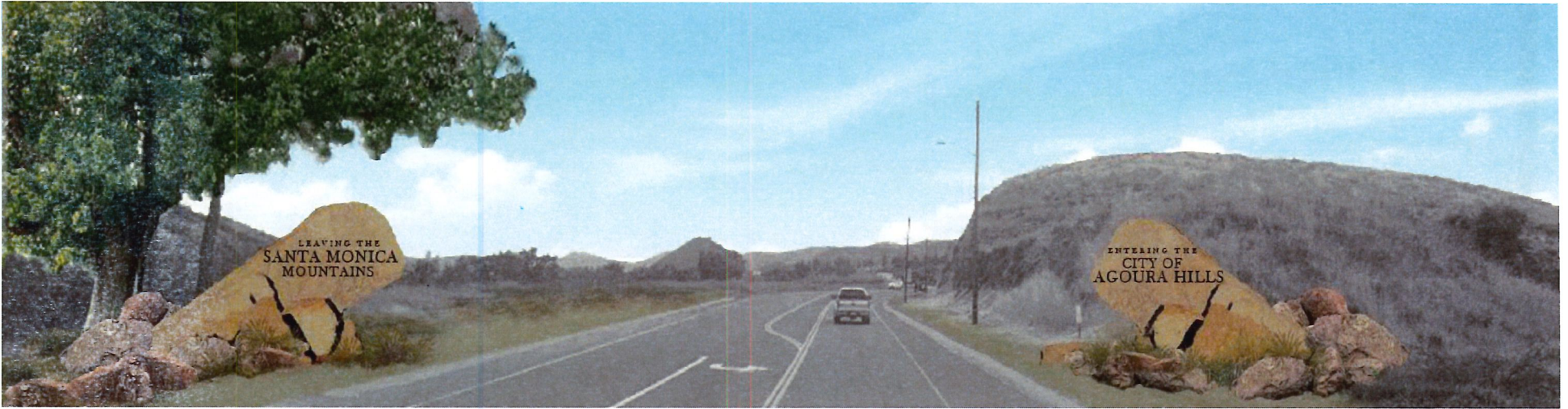
NORTHEAST CORNER RENDERING



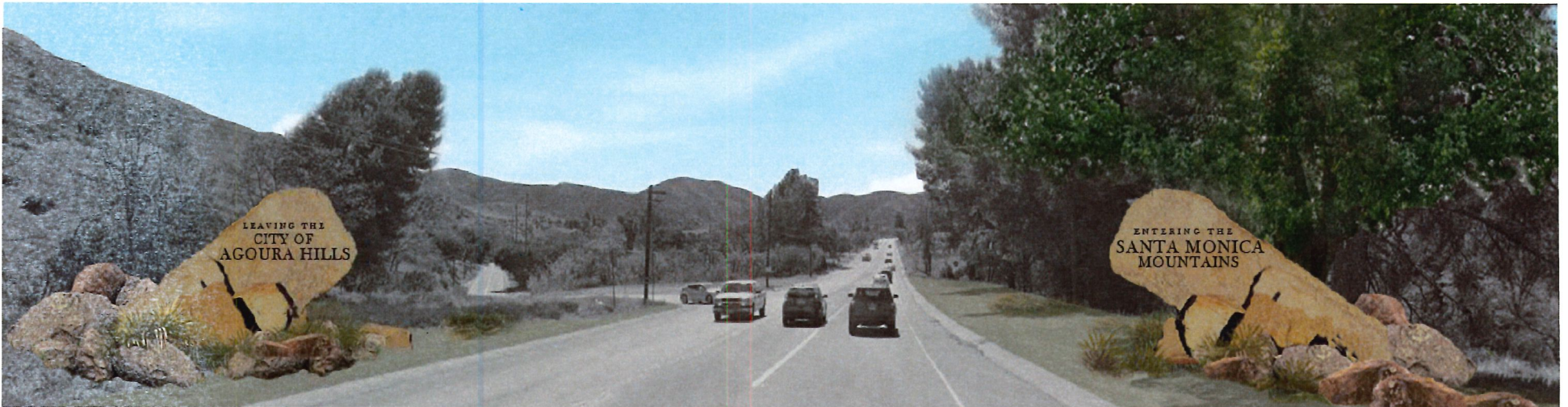
NORTHWEST CORNER SEAT WALL RENDERING



GATEWAY MONUMENT CONCEPT - A



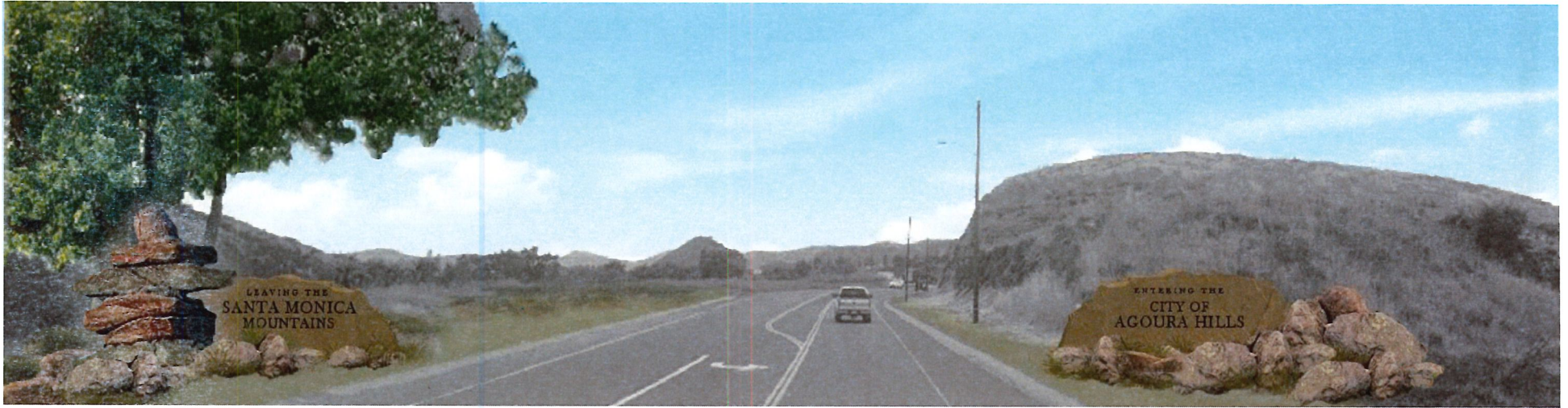
GATEWAY MONUMENT NORTHBOUND VIEW



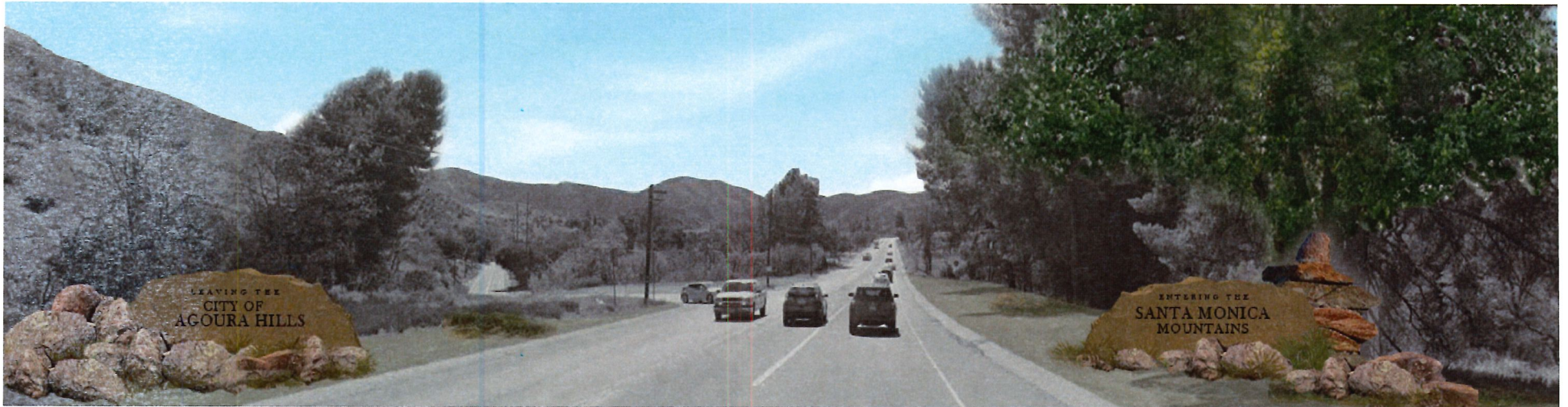
GATEWAY MONUMENT SOUTHBOUND VIEW

GATEWAY MONUMENT CONCEPT - B

KANAN AND AGOURA ADVANCED CONCEPTUAL PLANS FOR AESTHETICS
CITY OF AGOURA HILLS



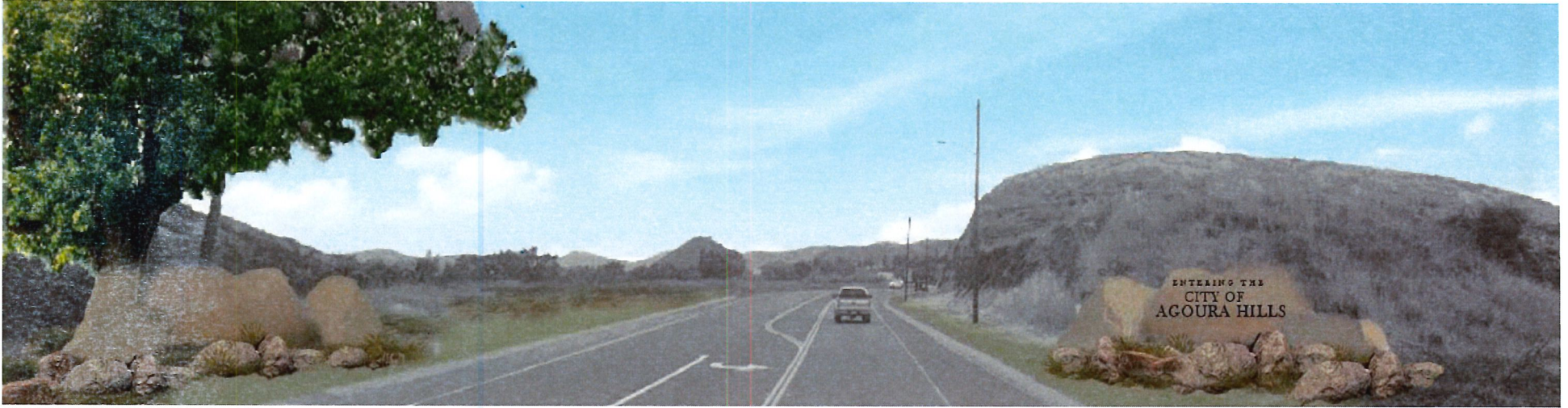
GATEWAY MONUMENT NORTHBOUND VIEW



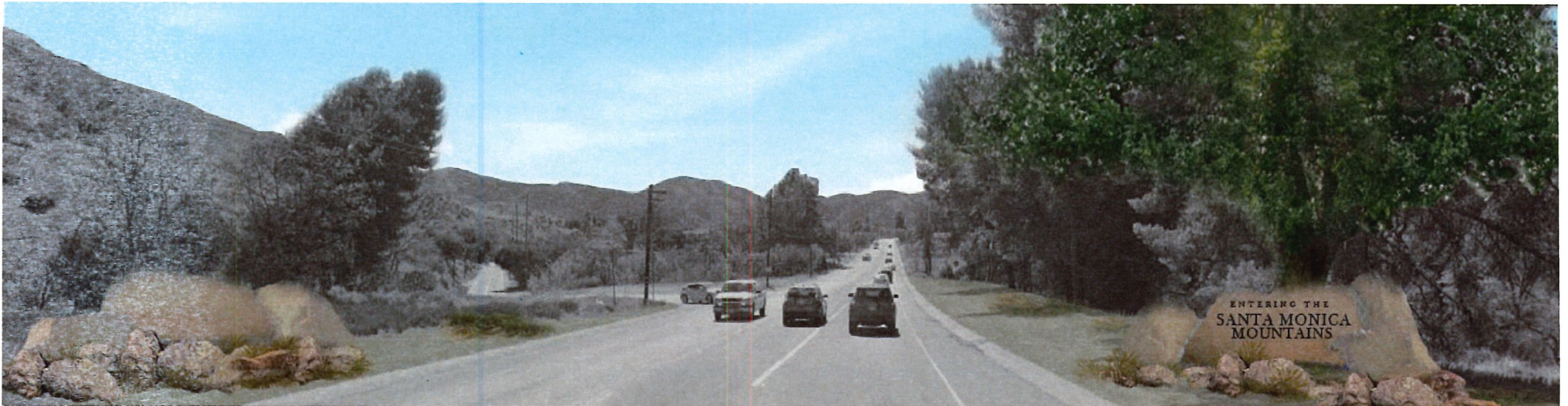
GATEWAY MONUMENT SOUTHBOUND VIEW

GATEWAY MONUMENT CONCEPT - C

KANAN AND AGOURA ADVANCED CONCEPTUAL PLANS FOR AESTHETICS
CITY OF AGOURA HILLS

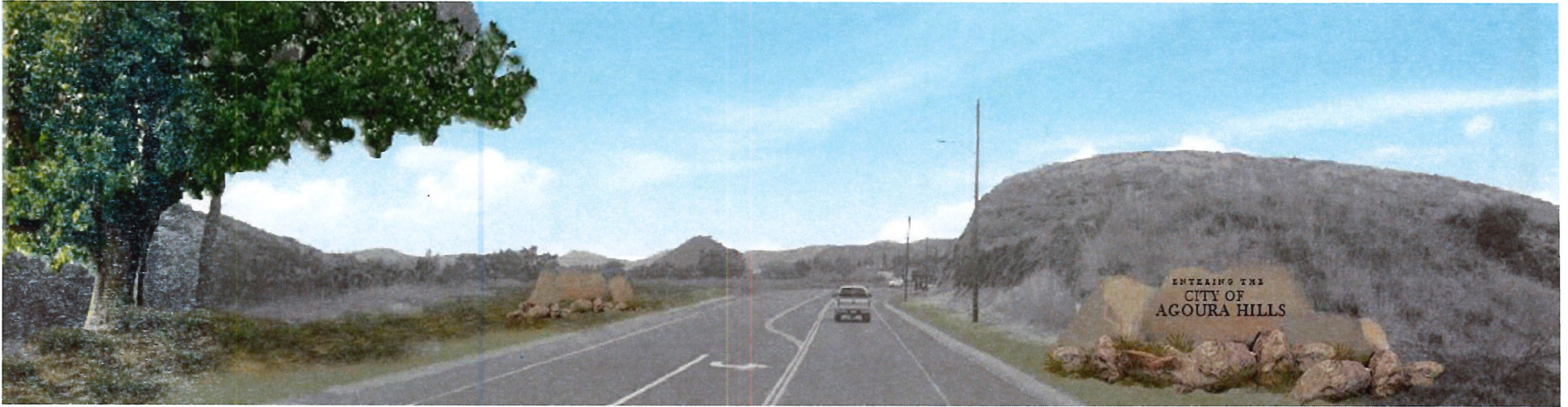


GATEWAY MONUMENT NORTHBOUND VIEW



GATEWAY MONUMENT SOUTHBOUND VIEW

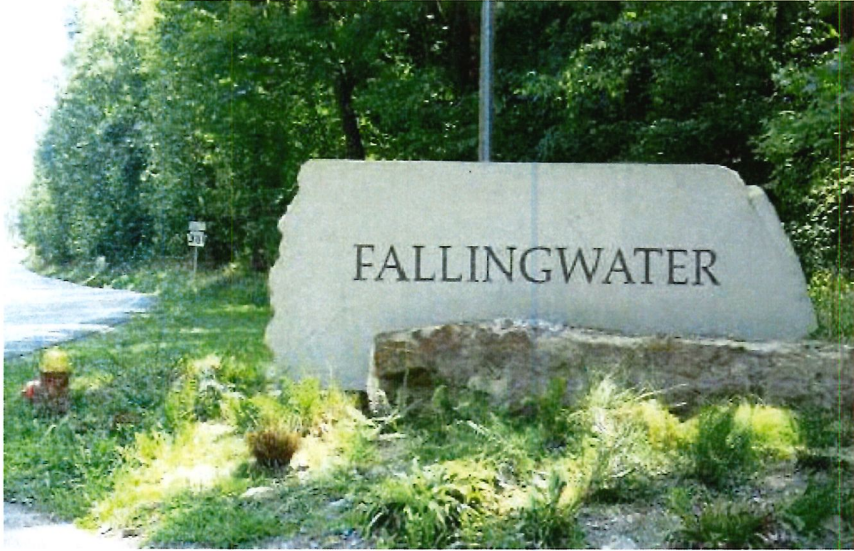
GATEWAY MONUMENT CONCEPT - C



GATEWAY MONUMENT NORTHBOUND STAGGERED VIEW

MATERIALS | GATEWAY MONUMENT CONCEPTS

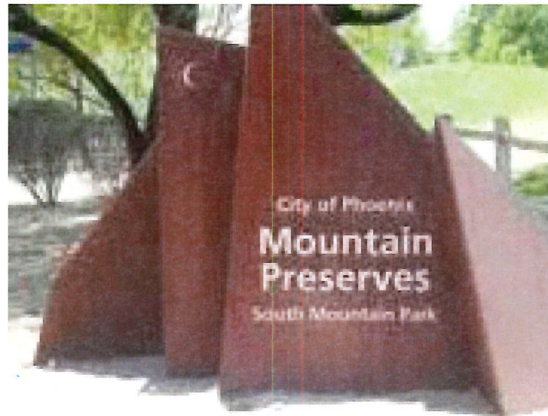
KANAN AND AGOURA ADVANCED CONCEPTUAL PLANS FOR AESTHETICS
CITY OF AGOURA HILLS



ETCHED LETTERING



LARGE BOULDER



IRON ELEMENTS



PRE CAST STONE SLABS

SITE FURNISHING | BIKE RACKS - BENCHES - TRASH - LIGHTING

KANAN AND AGOURA ADVANCED CONCEPTUAL PLANS FOR AESTHETICS
CITY OF AGOURA HILLS



BENCH



TREE GRATE



SEAT WALL



PEDESTRIAN STREET LIGHT



BIKE RACKS



FLAGSTONE PAVERS



VEHICULAR BOLLARDS



LANDSCAPE BOULDERS



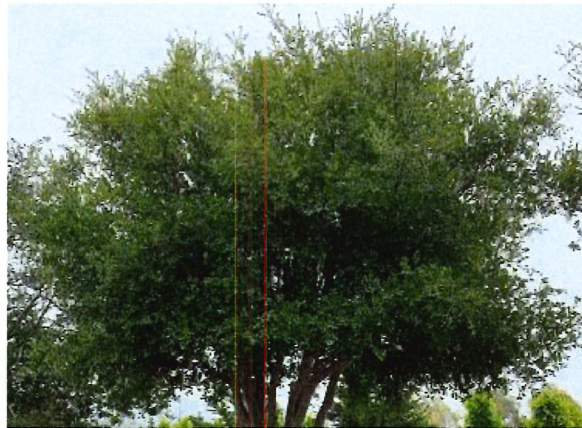
STONE VENEER

CANOPY TREES | IMAGE BOARD

KANAN AND AGOURA ADVANCED CONCEPTUAL PLANS FOR AESTHETICS
CITY OF AGOURA HILLS



CRAPE MYRTLE
LAGERSTROEMIA INDICA 'MUSKREE'



COAST LIVE OAK
QUERCUS AGRIFOLIA



WESTERN REDBUD
CERCIS OCCIDENTALIS



CALIFORNIA SYCAMORE
PLATANUS RACEMOSA

SHRUB MATERIAL | IMAGE BOARD

KANAN AND AGOURA ADVANCED CONCEPTUAL PLANS FOR AESTHETICS
CITY OF AGOURA HILLS



CALIFORNIA FUCHSIA
EPILOBIUM CANUM



DOUGLAS IRIS
IRIS DOUGLASIANA



EMERALD CARPET MANZANITA
ARCTOSTAPHYLOS 'EMERALD CARPET'



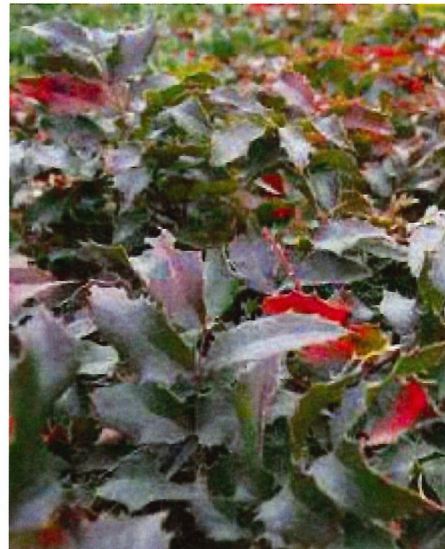
MIDNIGHT MEXICAN SAGE
SALVIA LEUCANTHA 'MIDNIGHT'



DEERGRASS
MUHLENBERGIA RIGENS



CALIFORNIA FIELD SEDGE
CAREX PRAEGRACILIS



COMPACT OREGON GRAPE
MAHONIA AQUIFOLIUM "COMPACTA"



HIDCOTE SUPERIOR ENGLISH LAVENDER
LAVANDULA ANGUSTIFOLIA