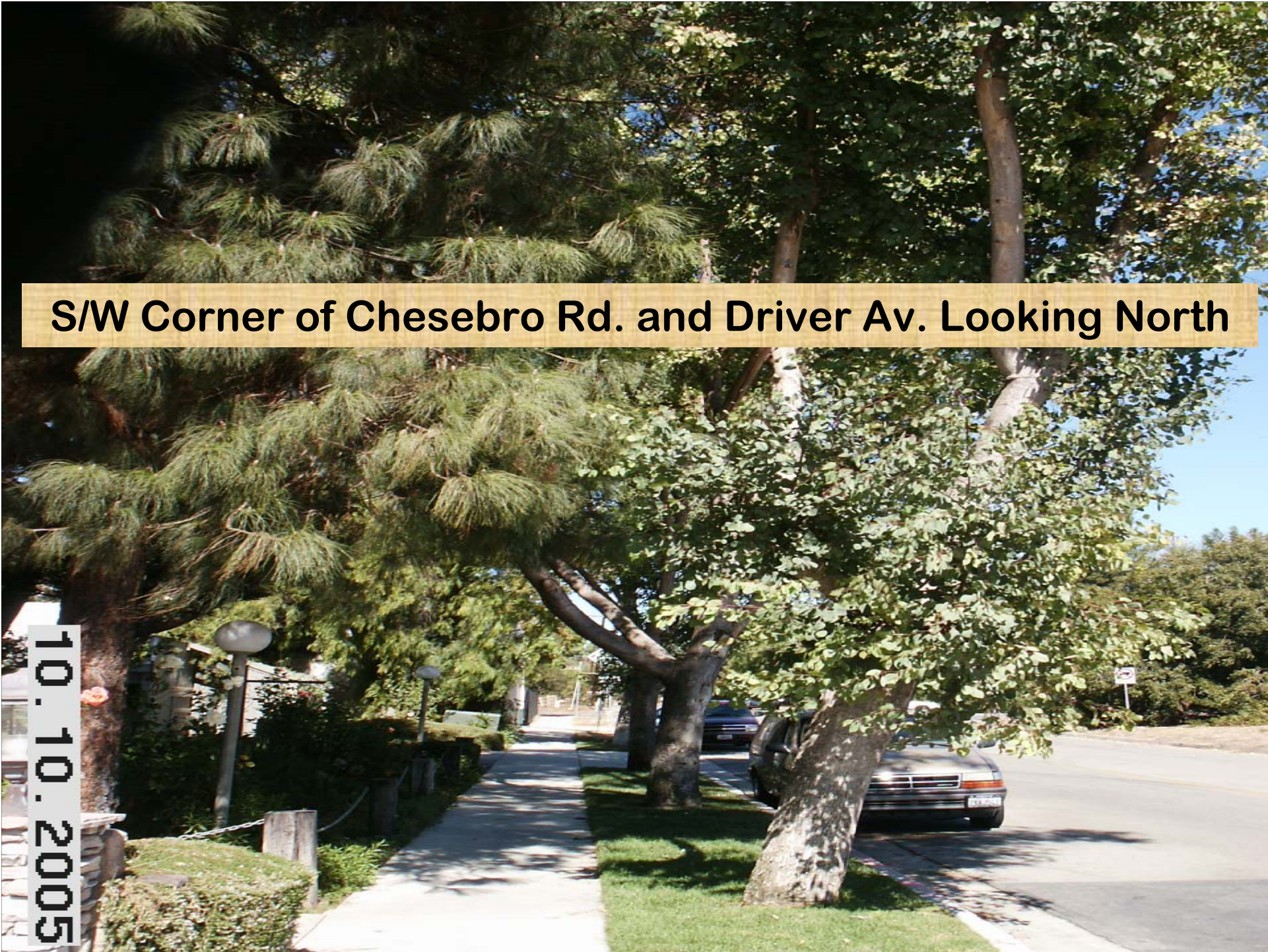


Parkway Designs

Examples of Conventional Sidewalk Parkway Design

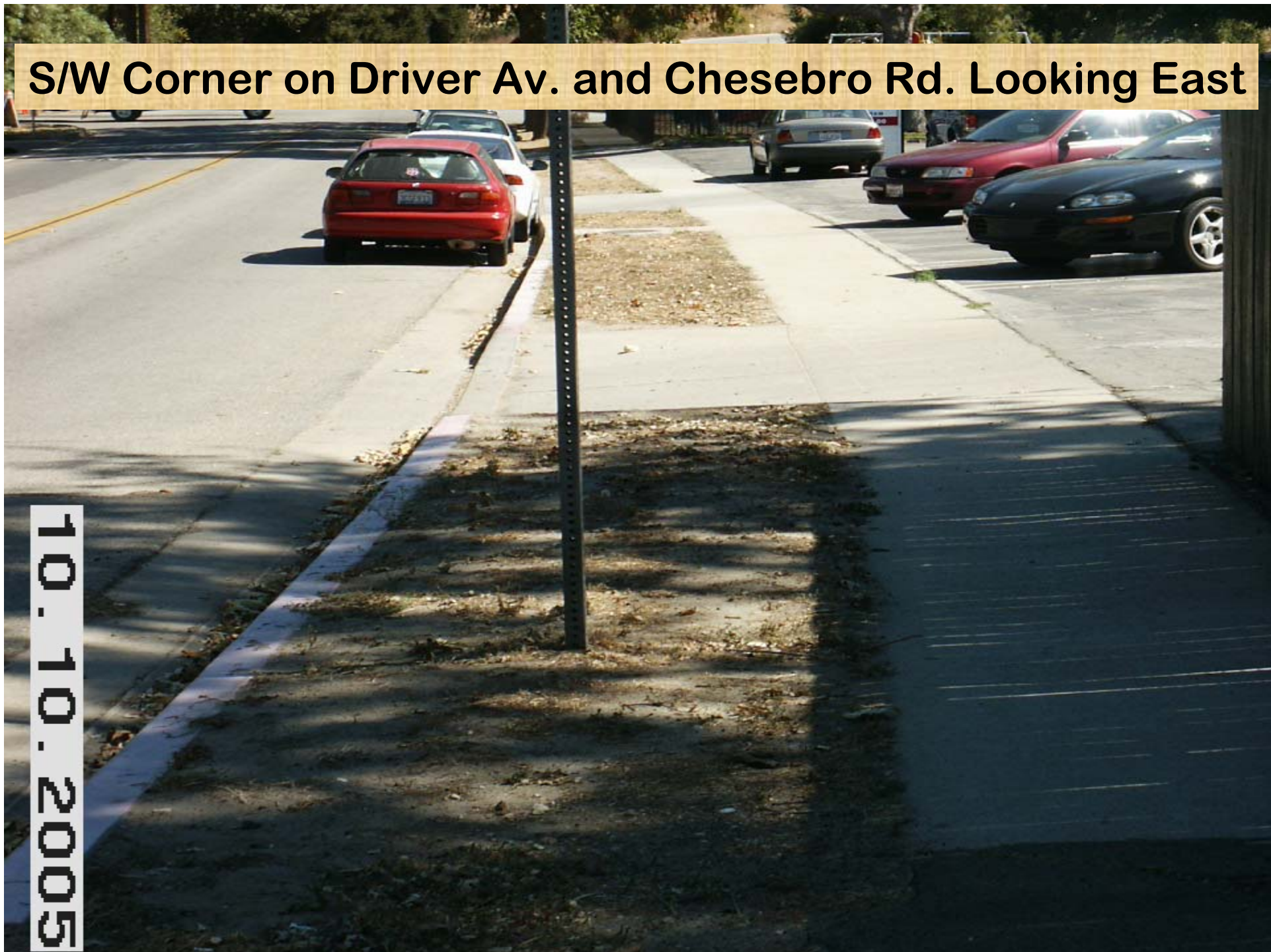
A photograph of a residential street corner. A concrete sidewalk runs along the left side of the road, bordered by a grassy area and several large, mature trees. A silver car is parked on the right side of the road. The scene is captured from a low angle, looking down the street. A yellow banner is overlaid on the top portion of the image, and a vertical date stamp is on the left side.

S/W Corner of Chesebro Rd. and Driver Av. Looking North

10.10.2005

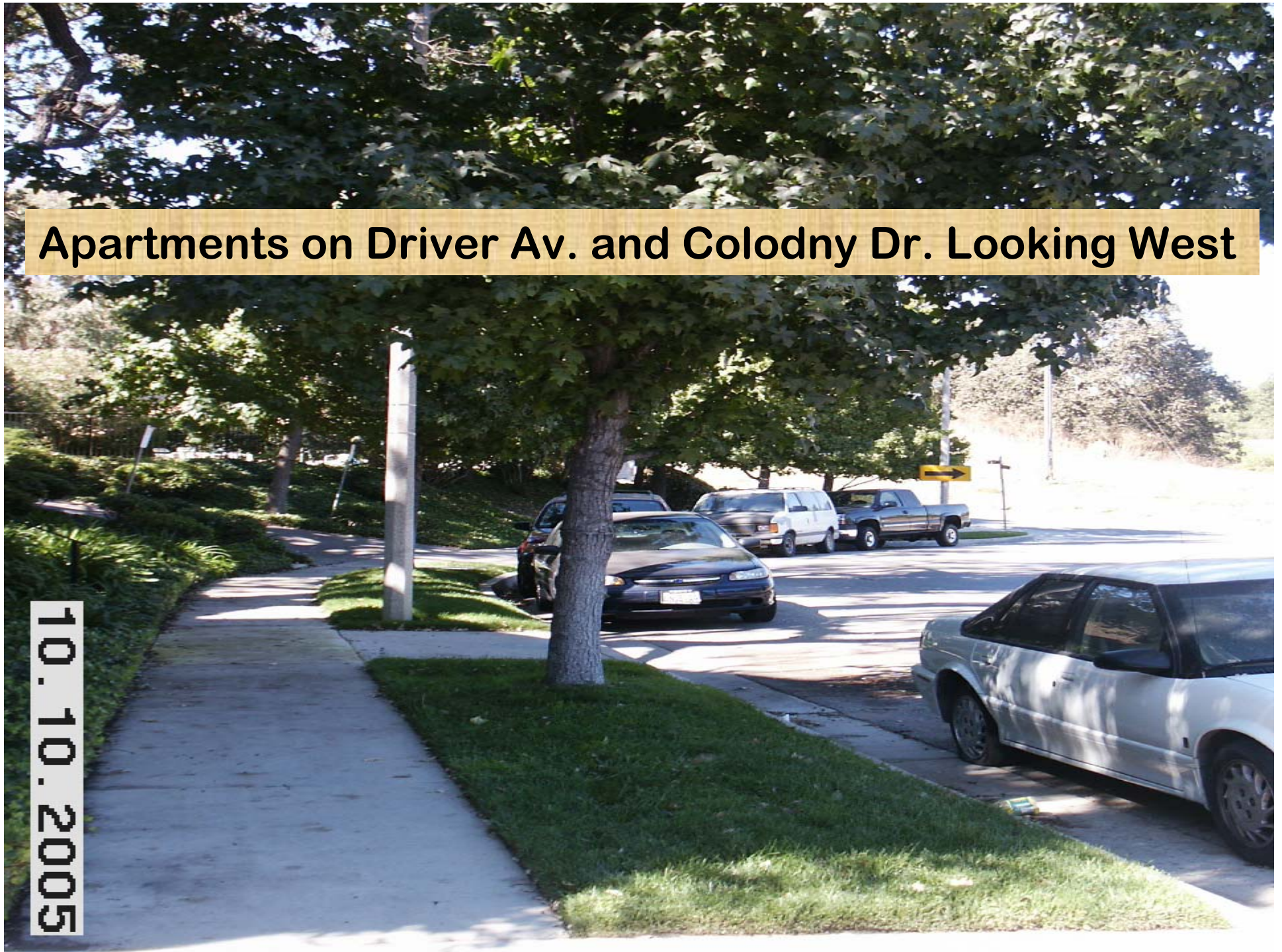
S/W Corner on Driver Av. and Chesebro Rd. Looking East

10.10.2005



Apartments on Driver Av. and Colodny Dr. Looking West

10.10.2005



Corner of Driver Av. and Colodny Dr.

10.10.2005



Agoura High School Looking West



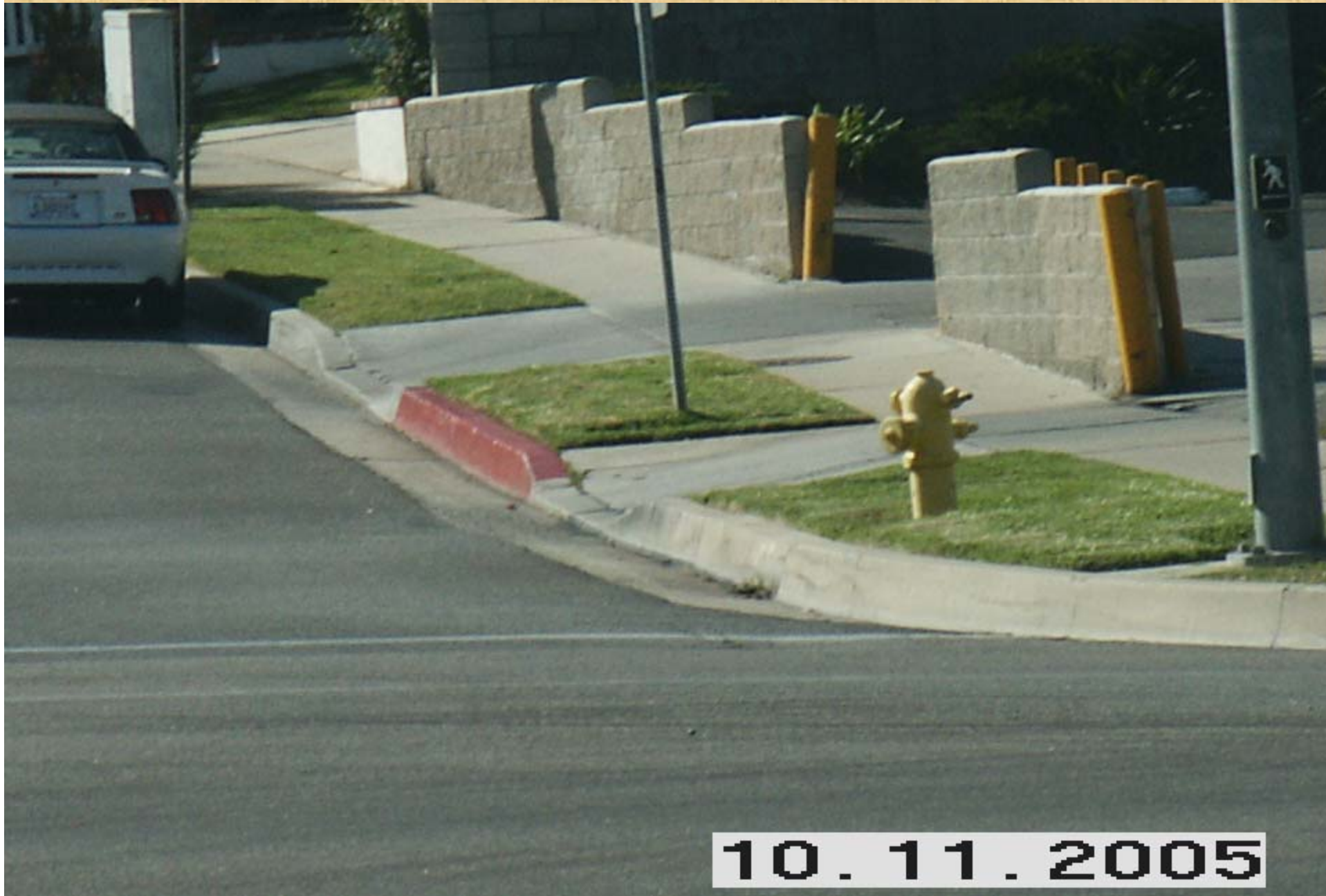
10.10.2005

Agoura High School Looking West

10.11.2005



S/W Corner Thousand Oaks Blvd. and Lake Lindero Dr. Looking South



10.11.2005

S/E Corner of Thousand Oaks Blvd. and Lake Lindero Dr. Looking North





S/W Corner of Lake Lindero Dr. and Passageway Looking South



S/E Corner of Lake Lindero Dr. and Passageway Looking South



10.11.2005

S/W Corner of Lake Lindero Dr. and Lakefront Dr. Looking South

10.11.2005



S/W Corner of Lake Lindero Dr. and Canwood St. Looking South



10.11.2005

Examples of Meandering Sidewalk Parkway Design

5234 Chesebro Rd. – Looking South



10.10.2005

5234 Chesebro Rd. - Looking North



10.10.2005

Canwood St. at Oak Creek Apartments

Oak Creek Lane 29150

10.11.2005



West of Hampton Inn Looking West



10.11.2005

Katell Bldg. Looking East



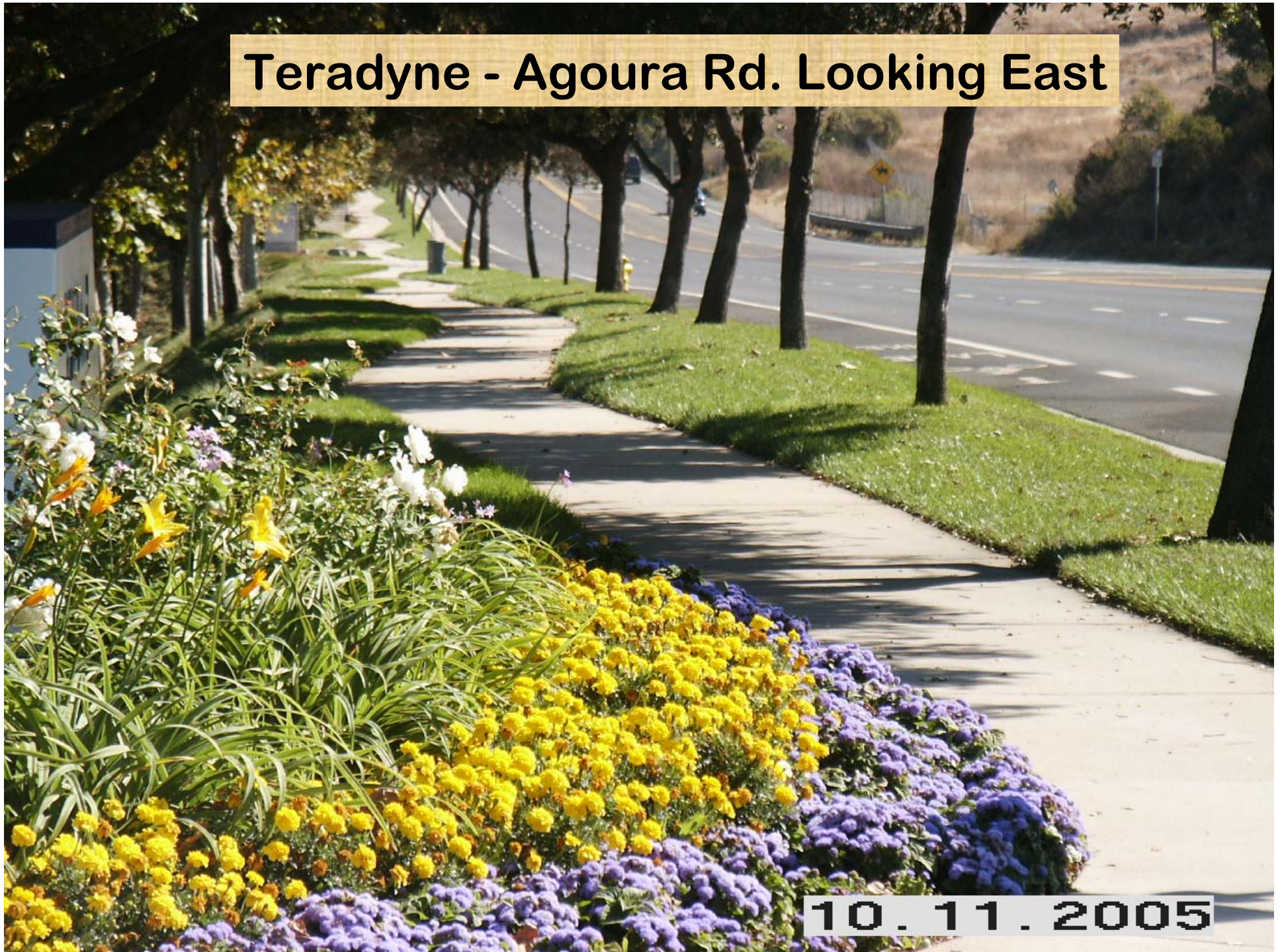
10.11.2005

Teradyne – Agoura Rd. Looking West



10.11.2005

Teradyne - Agoura Rd. Looking East



10.11.2005

Teradyne - Agoura Rd. Looking East

10.11.2005



Agoura Rd.-Western Boundary-Looking West



Agoura Rd.-Western Boundary-Looking East

 **Lee & Associates**
COMMERCIAL REAL ESTATE SERVICES
AVAILABLE
818/449-4414
MARK LEONARD

10.11.2005

Agoura Hills Business Center Looking East



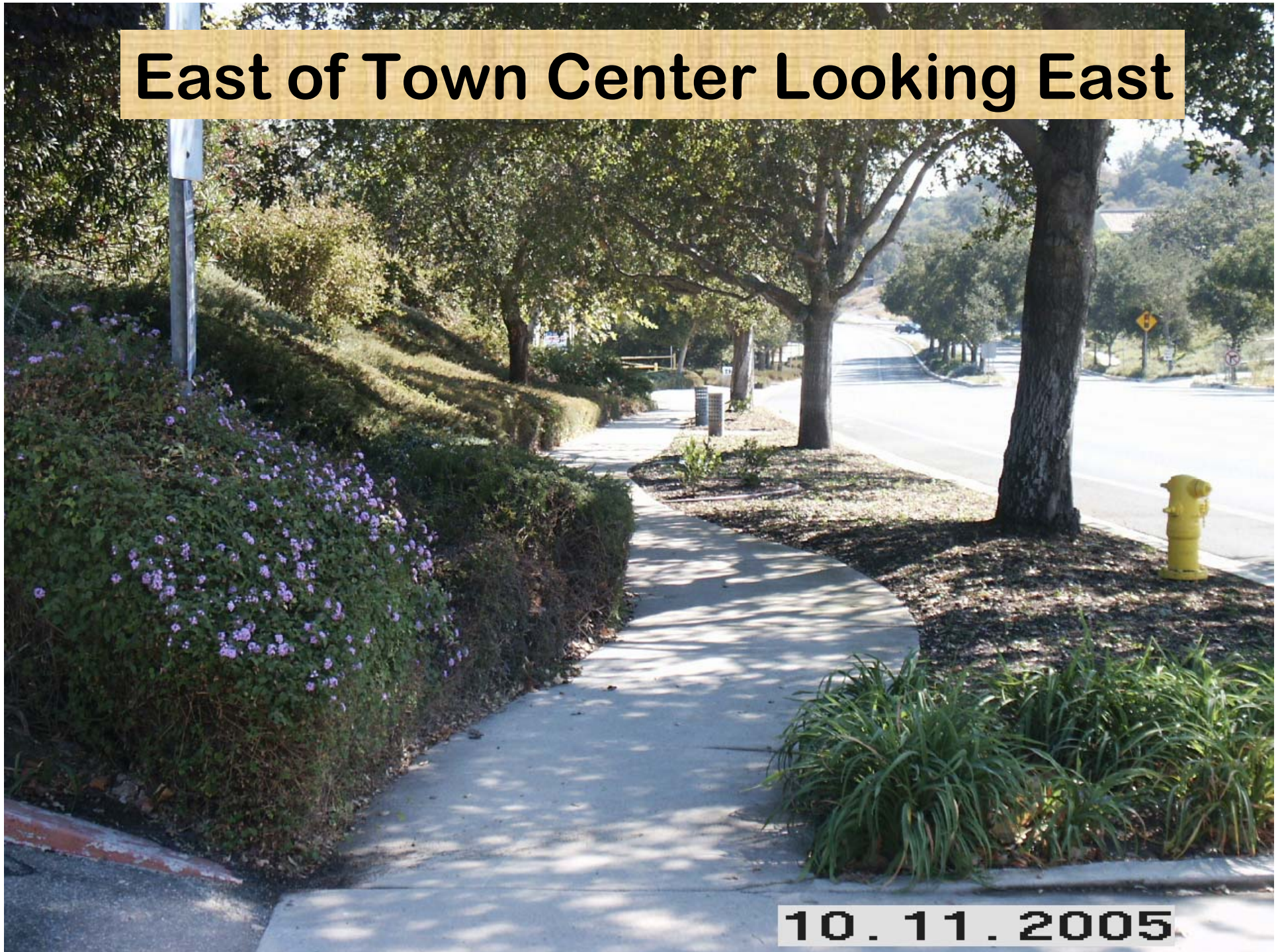
10.11.2005

Looking West Towards Agoura Business Center



10.11.2005

East of Town Center Looking East



10.11.2005

City Hall - Looking East



10.11.2005

Ladyface Ct. and Agoura Rd. Looking North



10.11.2005

City Hall - Looking West



10.11.2005



10.11.2005