	<p align="center">CITY OF AGOURA HILLS BUILDING & SAFETY DIVISION 30001 LADYFACE COURT AGOURA HILLS, CA 91301</p>	PHONE: (818) 597-7334 FAX: (818) 597-7352 www.AgouraHillsCity.org	
STANDARD TRELLIS/PATIO COVER FOR VHFHSZ		IH-12	4-15-22

INSTRUCTIONS:

1. Obtain a preliminary approval from the Planning Department.
2. Complete a building permit application form.
3. If applicable, submit an approval letter from Homeowners' Association.
4. Submit two (2) copies of these completed forms and site plans (maximum 11 x 17") for plan check.
5. Alternate design that deviates from these forms require custom plans/details and may require engineering.
6. Engineering calculations and plans/details may be required for the existing building if solid roof is proposed.

INFORMATION:

1. Patio covers are 1-story structures that do not exceed 12-ft in height above the adjacent grade.
2. The longest wall and one additional wall shall have a minimum open area equal to 65% of the wall area below 6'-8".
3. Openings may be enclosed with insect screening or plastic that is 1/8" max thick translucent or transparent which is readily removable (i.e. wingnuts).
4. Such enclosures shall not obstruct bedroom egress (window or door) which is required to open onto a yard or exit court.

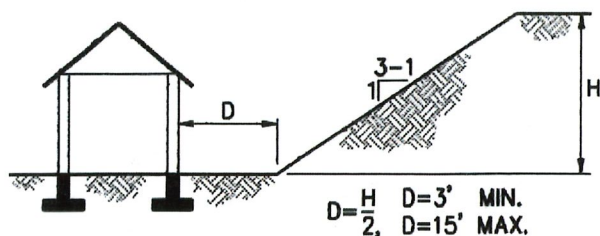
MATERIALS:

1. All wood shall be grade marked Douglas Fir Larch No. 2 or better. If member span is greater than 12-ft, then it shall be Douglas Fir Larch No. 1.
2. Minimum concrete strength = 2500 psi @ 28 days.
3. All pre-fabricated connectors shall be ICC approved.

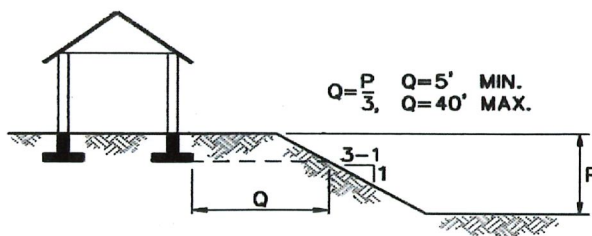
SITE/PLOT PLAN:

A complete site/plot plan must show the following:

1. Locate the property boundary, and show the setback to the property lines (left, right, & rear).
2. A north arrow, and location of the street.
3. The location and dimension (length x width) of the patio cover.
4. Any other structures near the proposed patio cover, and include the distance between the structures and patio cover.
5. Any 3:1 or steeper slopes contiguous to the site. If there are no slopes, then note on plan: "No 3:1 or steeper slopes within 40-ft of proposed structures."; otherwise comply with the following:
 - a) Locate the top/toe of slopes, and show the distance between the patio cover and top/toe.
 - b) Specify the gradient and height of slopes.
 - c) The patio cover must meet the required slope setback per figures below.



ASCENDING SLOPE



DESCENDING SLOPE

	<p align="center">CITY OF AGOURA HILLS BUILDING & SAFETY DIVISION 30001 LADYFACE COURT AGOURA HILLS, CA 91301</p>	PHONE: (818) 597-7334 FAX: (818) 597-7352 www.AgouraHillsCity.org	
STANDARD TRELLIS/PATIO COVER FOR VHFHSZ		IH-12	4-15-22

CITY STANDARD (VHFHSZ):

- A. Rafters (spaced) must be a 4x6 min. (heavy timber).
- B. Supporting beams/headers must be a 6x8 min. (heavy timber).
- C. Columns must be 6x6 min. (heavy timber) or 4x4 wrapped with 1-hour fire-resistive material.
- D. Lattice members must be non-combustible or 3x3 lumber.
- E. Solid covered roof must be non-combustible, heavy timber (2x deck material), and 1-hour constructed. If 2x rafters are used, then the underside must be completely covered with stucco or type 'x' gypsum board and the roof covering is a Class 'A' fire-rated assembly. If tile roof covering is proposed, specify below the manufacturer, model, weight per square foot (6 psf max.), and ICC number (or another report from another approved testing agency).
- F.
 - Manufacturer: _____
 - Model: _____
 - Weight per SF: _____
 - Report No.: _____

PATIO COVER SPAN TABLES

Use the tables below to determine (fill in the blank on the next page) the adequate member sizes for the rafter and header.

OPEN TRELLIS

OPEN LATTICE PATIO - RAFTER MAX. SPANS (FEET)					
Size	<i>Spacing (inches o.c.)</i>				
	16	24	32	36	48
4X6	20	18	16	14	13
4X8	-	-	20	18	17
4X10	-	-	-	-	20

OPEN LATTICE PATIO - HEADER MAX. SPAN (FEET)		
Size	<i>Rafter Span (ft)</i>	
	Up to 10	Up to 20
6X8	16	12
6X10	20	16
6X12	22	18

SOLID PATIO COVER

SOLID COVERED PATIO - RAFTER MAX. SPANS (FEET)					
Size	<i>Spacing (inches o.c.)</i>				
	16	24	32	36	48
4X6	15	14	12	11	10
4X8	20	18	16	14	13
4X10	-	-	20	17	15

SOLID COVERED PATIO - HEADER MAX. SPAN (FEET)		
Size	<i>Rafter Span (ft)</i>	
	Up to 10	Up to 20
6X8	14	10
6X10	18	14
6X12	20	16



CITY OF AGOURA HILLS

BUILDING & SAFETY DIVISION

30001 LADYFACE COURT
AGOURA HILLS, CA 91301

PHONE: (818) 597-7334

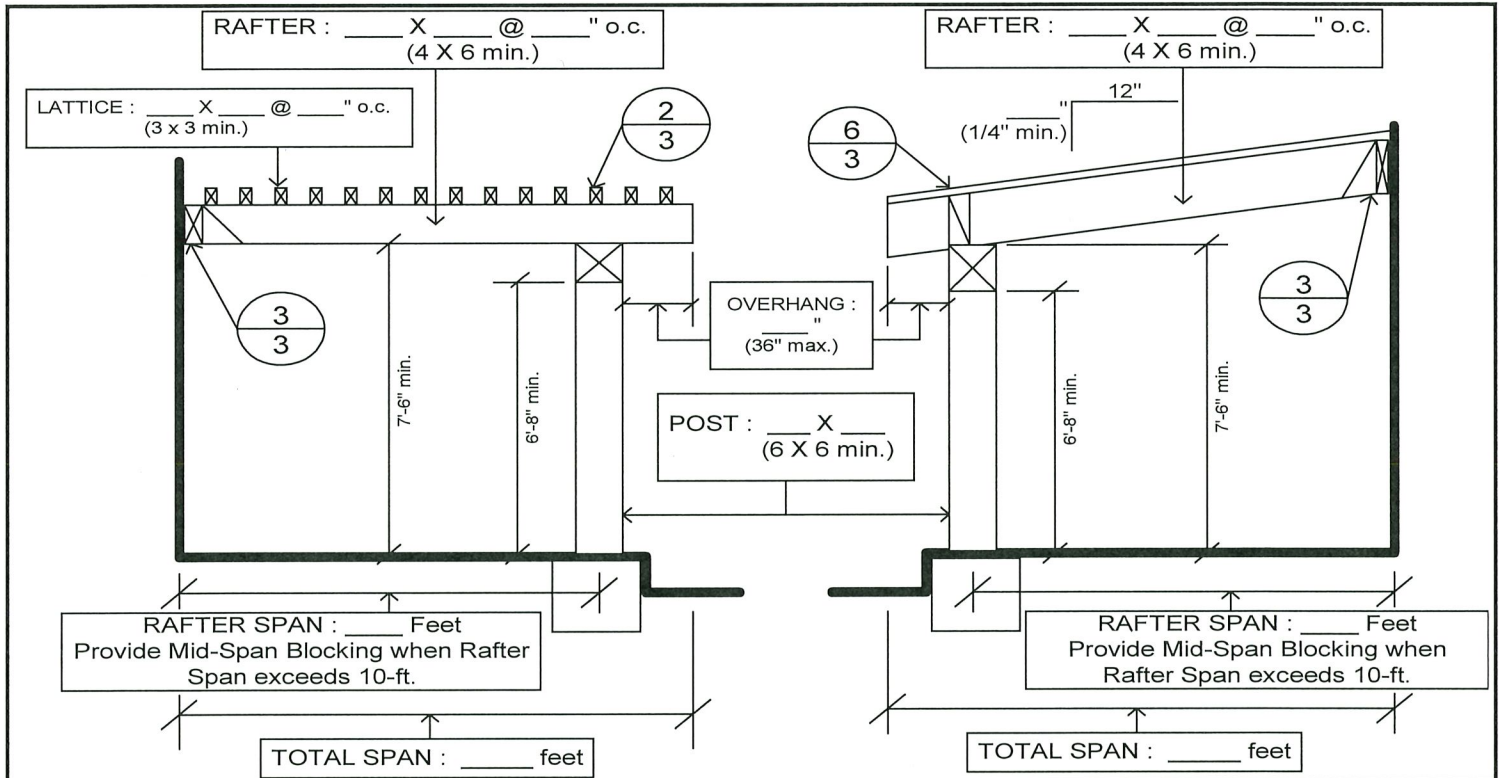
FAX: (818) 597-7352

www.AgouraHillsCity.org

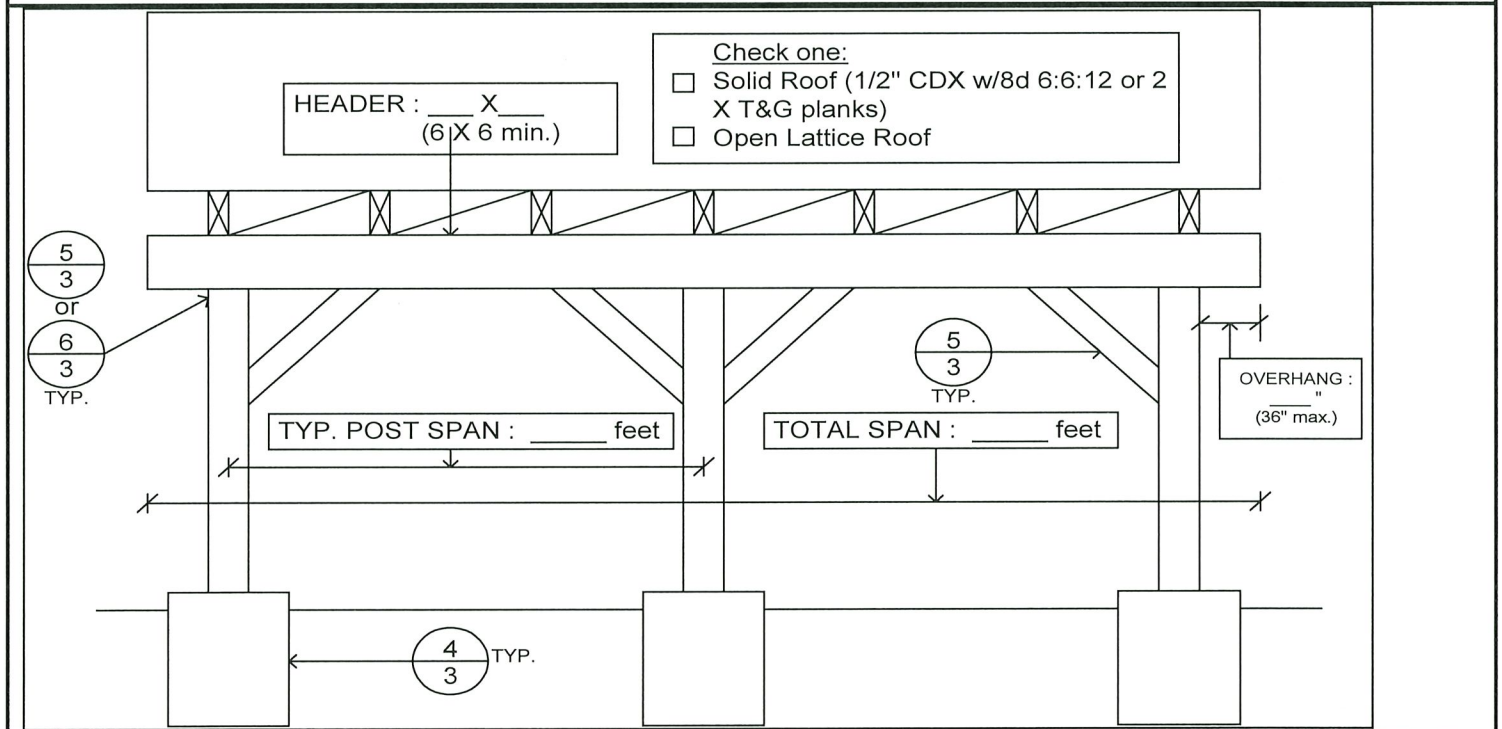
STANDARD TRELLIS/PATIO COVER FOR VHFHSZ

IH-12

4-15-22



SIDE CROSS-SECTIONS

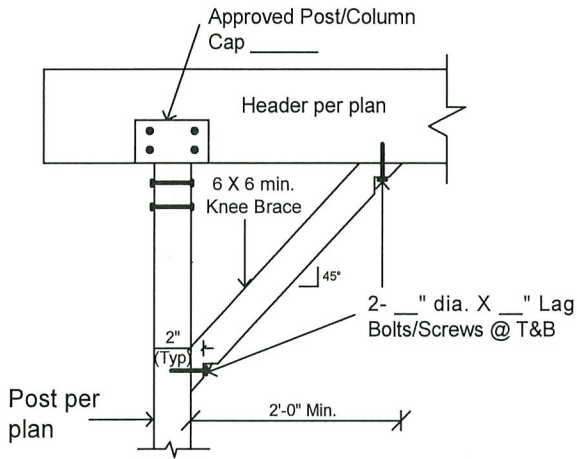


FRONT ELEVATION

STANDARD TRELLIS/PATIO COVER FOR VHFHSZ

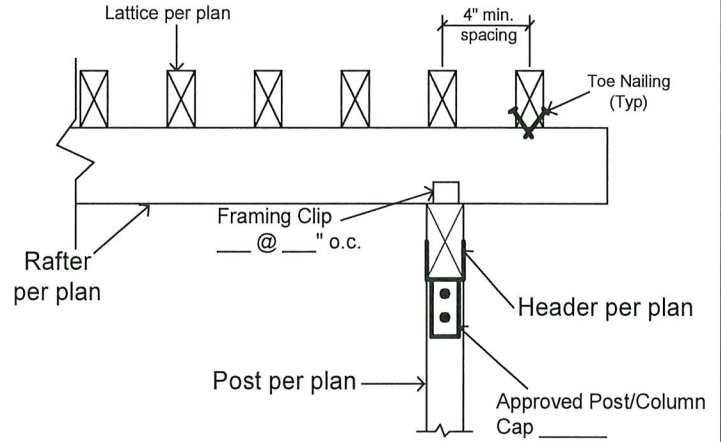
IH-12

4-15-22



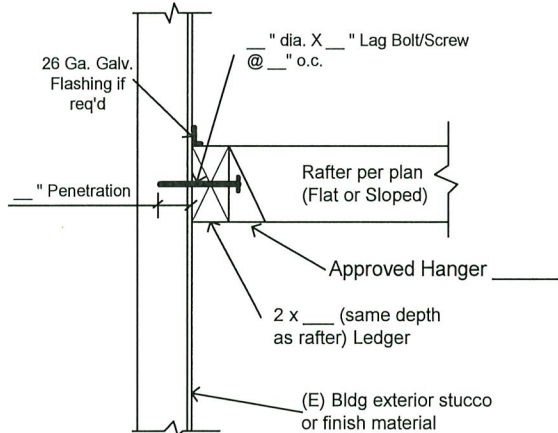
1 KNEE BRACING

NTS



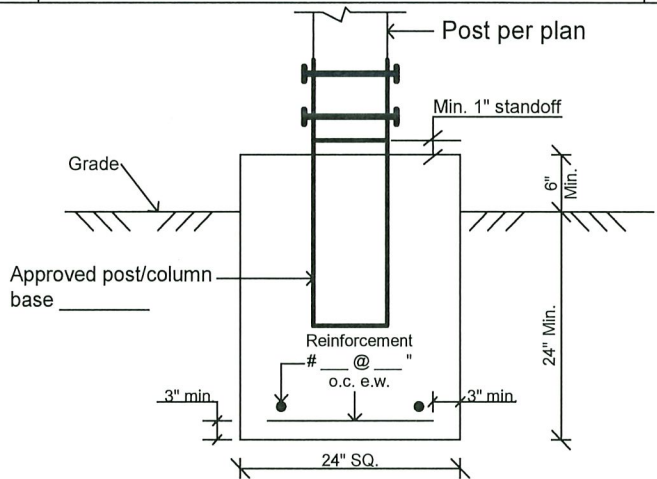
2 LATTICE CONNECTION

NTS



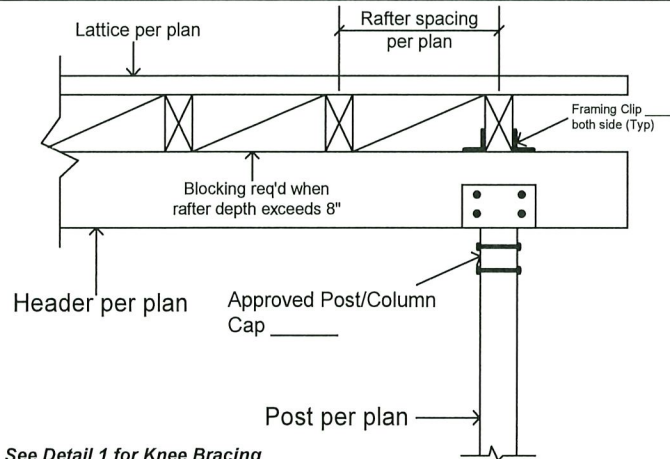
3 CONNECTION TO (E) BUILDING

NTS



4 PAD FOOTING

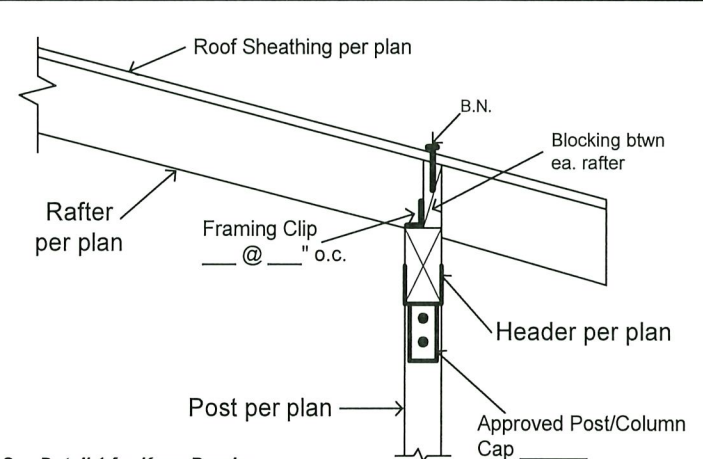
NTS



See Detail 1 for Knee Bracing

5 RAFTER / HEADER (FLAT)

NTS



See Detail 1 for Knee Bracing

6 RAFTER / HEADER (SLOPED)

NTS