

▶ BRING YOUR DESIGN TO LIFE



Living Soil

Grass Removal – Still need to get rid of your lawn? Try sheet mulching!

- Layers of cardboard and mulch deprive grass of light.
- Layers decompose into nutrients for your new plants.
- Visit CNPS.org/gardening for more information!

Soil Amendment – Many native plants thrive in what we consider poor soil conditions!

- AVOID chemical fertilizers and other amendments.

Mulch – Retain moisture, feed your soils, and insulate your plants from heat and cold.

- Use organic, weed free mulch. We recommend wood chips, and gorilla hair for steep slopes.
- Apply after planting, and in late spring and early fall.
- AVOID synthetic materials. They deprive your soil and plants of nutrients.
- AVOID weed cloths, plastic, and other weed barriers. They prevent the natural cycle of nutrients through the soils, can kill the living biology in your soil, and are often ineffective at preventing weeds.

Hardscape – Use permeable surfaces wherever possible to allow water to soak in to the soil below.

- Stepping stones
- Gravel
- Permeable paving
- Decomposed granite (DG)
(at least 1/4" between pavers)



Planting and Watering

Give your new CA native landscape a healthy start by following our online planting and watering guides.

Visit CNPS.org/gardening to learn more!



Create a Habitat

Water Feature – Pollinators, birds, and wildlife need water too!

- Add a bird bath, fountain or other water feature.

Bare Soil for Bees – Our ground dwelling, native bees need habitat! These bees are not aggressive, and will help keep your landscape flowering!

- Leave a few sunny areas of your landscape mulch free.



Garden Décor – Most importantly, have fun with your garden! Add a personal touch with your favorite décor.

- Boulders
- Rain Chain
- Decorative Pots
- Bird Feeders
- Bench
- Patio Table

The California Native Plant Society is a statewide non-profit organization with 35 local chapters dedicated to the conservation and enjoyment of California's native plants and places.



Garden plans and watercolor courtesy of Kathleen Catton, Feochadan Land Design.
Graphic illustrations by Randi Gunder, Goldenscape Designs.



CALIFORNIA
NATIVE PLANT SOCIETY
San Gabriel Mountains Chapter
North and East
Los Angeles County

Native Landscape Planting Guide

Starting a native plant garden doesn't have to be complicated. This easy guide takes the guesswork out of which plants to use where. Simply choose one of the garden vignettes below and select from recommended native plants listed on the inside of your guide.

✓ Low Water Use ✓ Pollinator Friendly ✓ Locally Native

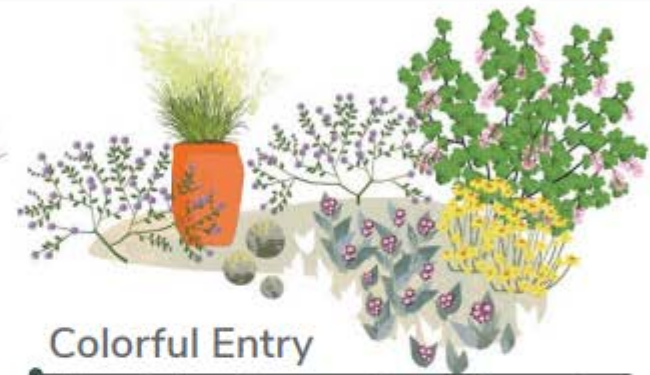
▶ CHOOSE YOUR DESIGN

Five Easy Project Ideas for your Garden



Homey Habitat

Featuring a bench and bird bath, you can take a seat in this habitat and enjoy all of the bustling activity in your yard!
Features: bench, bird bath, boulders.



Colorful Entry

Make a statement in your entryway! Be sure to choose plants with a variety of colors.
Features: large pot, decorative round stones.



Wildlife Walkway

Take a stroll through your landscape. Use permeable materials for your pathway, such as stepping stones or decomposed granite.
Features: permeable walkway, large boulders.



Pollinator Park

Add excitement to the parkway strip along your driveway by adding plants that butterflies and other pollinators love.
Features: stepping stones and contrasting colors.



Living Wall

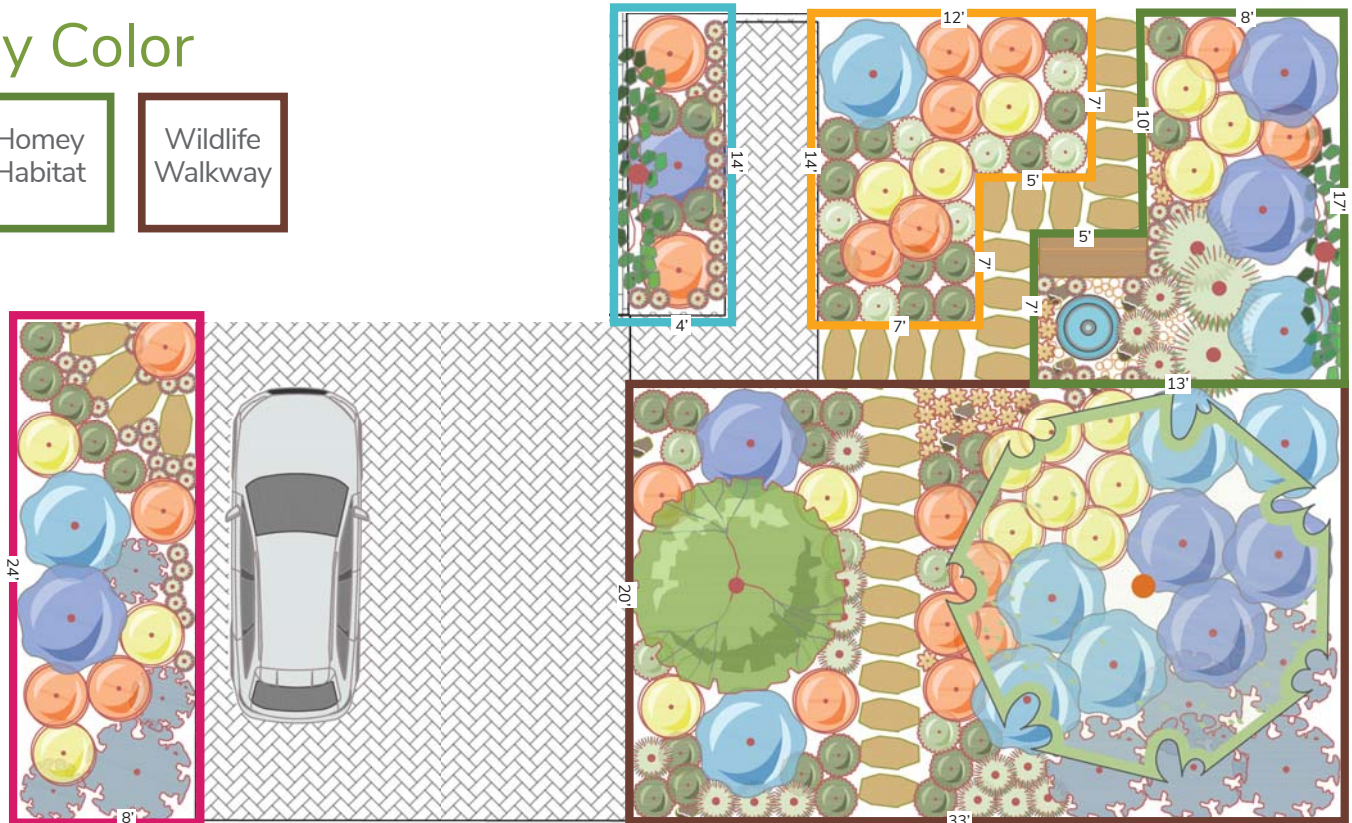
Designing your space vertically can add life to your yard. Use bold colors, and interesting shapes to make a flat area stand out.
Features: rain chain, swale, trellis.

▶ CHOOSE YOUR PLANTS

Vignettes Outlined By Color



1. Choose the design vignette that best fits the shape and size of your site.
2. Match the symbols with those in the plant list.
3. Select plants based on your site's sun exposure.
4. Bonus points for choosing locally native plants!



California Native Plant List

San Gabriel Mountains Chapter
North and East Los Angeles County

SYMBOL	PLANT SPECIES	LOCAL	SUN	WATER	H/W	COLOR	WILDLIFE
TREES							
	Desert Willow / <i>Chilopsis linearis</i>	Y	☀	💧	20'	10 - 20'	🐝🦋
	Toyon / <i>Heteromeles arbutifolia</i>	Y	☀☀	💧	6 - 30'	10 - 15'	🐝🦋
	Holly-leaved Cherry / <i>Prunus ilicifolia</i>	Y	☀☀☀	💧/💧	20'	20'	🐝🦋
	Blue Elderberry / <i>Sambucus nigra</i> ssp. <i>caerulea</i>	Y	☀	💧	20'	12 - 20'	🐝🦋
LARGE SHRUBS							
	Howard McMinn Manzanita / <i>Arctostaphylos</i> 'Howard McMinn'	N	☀☀☀	💧/💧	6 - 8'	8 - 10'	🐝🦋
	Ray Hartman California Lilac / <i>Ceanothus</i> 'Ray Hartman'	N	☀☀☀	💧/💧	8 - 16'	8 - 16'	🐝🦋
	Eve Case Coffeeberry / <i>Frangula californica</i> 'Eve Case'	Y	☀☀☀	💧	8 - 10'	8 - 10'	🐝🦋
	Lemonadeberry / <i>Rhus integrifolia</i>	Y	☀☀☀	💧/💧	8 - 15'	10 - 15'	🐝🦋
MEDIUM SHRUBS							
	Palmer's Mallow / <i>Abutilon palmeri</i>	Y	☀☀	💧/💧	5'	5'	🐝🦋
	Oregon Grape / <i>Berberis aquifolium</i>	Y	☀☀☀	💧/💧	4 - 6'	4 - 6'	🐝🦋
	White Sage / <i>Salvia apiana</i>	Y	☀☀☀	💧/💧	3 - 5'	3 - 5'	🐝🦋
	St. Catherine's Lace / <i>Eriogonum giganteum</i>	N	☀☀☀	💧/💧	2 - 6'	4 - 10'	🐝🦋
	Bladderpod / <i>Peritoma arborea</i>	Y	☀☀	💧/💧	2 - 6'	2 - 6'	🐝🦋
SMALL SHRUBS							
	Pigeon Point Coyote Brush / <i>Baccharis</i> var. 'Pigeon Point'	N	☀☀	💧/💧	2 - 3'	to 6'	🐝🦋
	Yankee Point California Lilac / <i>Ceanothus</i> 'Yankee Point'	N	☀☀☀	💧	2 - 3'	to 6'	🐝🦋
	California Buckwheat / <i>Eriogonum fasciculatum</i>	Y	☀☀☀	💧/💧	2 - 3'	2 - 5'	🐝🦋
	Apricot Mallow / <i>Sphaeralcea ambigua</i>	Y	☀☀☀	💧/💧	2 - 3'	2 - 3'	🐝🦋
	Catalina Currant / <i>Ribes viburnifolium</i>	N	☀☀☀	💧/💧	2 - 3'	8'	🐝🦋
	Purple Nightshade / <i>Solanum xanti</i>	Y	☀☀☀	💧	2 - 4'	2 - 3'	🐝🦋
	Cleveland Sage / <i>Salvia clevelandii</i>	N	☀☀☀	💧	3 - 4'	4'	🐝🦋
LOW SHRUBS							
	Island Alum Root / <i>Heuchera maxima</i>	N	☀☀☀	💧/💧	1 - 2'	1 - 2'	🐝🦋
	Douglas Iris / <i>Iris douglasiana</i>	N	☀☀☀	💧/💧	1 - 2'	2 - 3'	🐝🦋
	Margarita BOP Penstemon / <i>Penstemon</i> 'Margarita BOP'	N	☀☀☀	💧/💧	1 - 3'	2 - 3'	🐝🦋
	Showy Penstemon / <i>Penstemon spectabilis</i>	Y	☀☀☀	💧/💧	2 - 4'	3 - 4'	🐝🦋
	De La Mina Lilac Verbena / <i>Verbena lilacina</i> 'De La Mina'	N	☀☀☀	💧	2 - 3'	3 - 4'	🐝🦋
	California Fuchsia / <i>Epilobium canum</i>	Y	☀☀☀	💧	.5 - 1.5'	2 - 3'	🐝🦋
	Blue-Eyed Grass / <i>Sisyrinchium bellum</i>	Y	☀☀☀	💧	1 - 2'	.5'	🐝🦋
SPREADING GROUNDCOVER							
	Common Yarrow / <i>Achillea millefolium</i>	Y	☀☀☀	💧/💧	1 - 3'	.5 - 1.5'	🐝🦋
	Island Pink yarrow / <i>Achillea millefolium</i> 'Island Pink'	N	☀☀☀	💧/💧	1 - 1.5'	spreading	🐝🦋
	Creeping Barberry / <i>Berberis repens</i>	Y	☀☀☀	💧/💧	1.5 - 3'	spreading	🐝🦋
	Bee's Bliss Sage / <i>Salvia</i> 'Bee's Bliss'	N	☀☀☀	💧	1 - 2'	2 - 5'	🐝🦋
GRASSES							
	Blue Grama / <i>Bouteloua gracilis</i>	N	☀☀	💧/💧	to 1'	to 1'	🐝
	Clustered Field Sedge / <i>Carex praegracilis</i>	Y	☀☀☀	💧	1 - 3'	2 - 3'	🐝
	Deergrass / <i>Muhlenbergia rigens</i>	Y	☀☀☀	💧	3 - 4'	3 - 4'	🐝
SUCCULENTS							
	Bright Green Dudleya / <i>Dudleya virens</i> ssp. <i>hassei</i>	N	☀☀☀	💧	.5 - 1'	.5 - 1'	🐝🦋
	Lance Leaf Live-For-Ever / <i>Dudleya lanceolata</i>	Y	☀☀☀	💧	.5 - 1'	to .5'	🐝🦋
VINES							
	Anacapa Pink Calif. Morning Glory / <i>Calystegia</i> 'Anacapa Pink'	N	☀☀☀	💧/💧	15 - 20'	spreading	🐝🦋
	Desert Wild Grape / <i>Vitis girdiana</i>	Y	☀☀☀	💧/💧	10 - 20'	spreading	🐝🦋

SUN

- ☀ Full Sun
- ☀☀ Part Sun
- ☀☀☀ Shade

WATER

- 💧 Very Low
- 💧 Low
- 💧 Medium

Plants on this list have been carefully selected by your local San Gabriel Mountains Chapter.

cnps-sgm.org



Visit Calscape.org to find more plants native to your area.