



CALIFORNIA
NATIVE PLANT SOCIETY
South Coast Chapter
South Los Angeles County
and South Channel Islands

Native Landscape Planting Guide

Starting a native plant garden doesn't have to be complicated. This easy guide takes the guesswork out of which plants to use where. Simply choose one of the garden vignettes below and select from recommended native plants listed on the inside of your guide.

✓ Low Water Use ✓ Pollinator Friendly ✓ Locally Native

▶ CHOOSE YOUR DESIGN

Five Easy Project Ideas for your Garden



Homey Habitat

Featuring a bench and bird bath, you can take a seat in this habitat and enjoy all of the bustling activity in your yard!
Features: bench, bird bath, boulders.



Colorful Entry

Make a statement in your entryway! Be sure to choose plants with a variety of colors.
Features: large pot, decorative round stones.



Wildlife Walkway

Take a stroll through your landscape. Use permeable materials for your pathway, such as stepping stones or decomposed granite.
Features: permeable walkway, large boulders.



Pollinator Park

Add excitement to the parkway strip along your driveway by adding plants that butterflies and other pollinators love.
Features: stepping stones and contrasting colors.



Living Wall

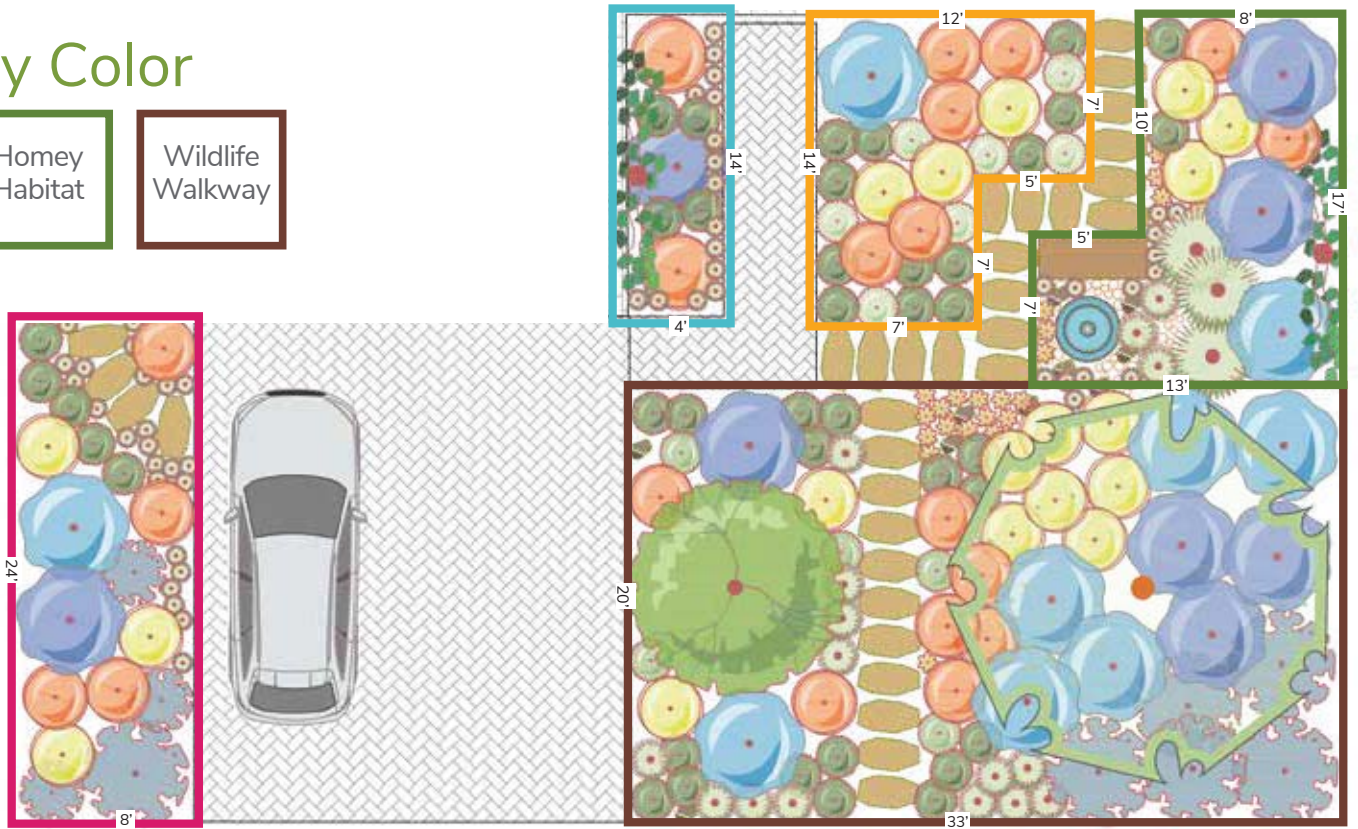
Designing your space vertically can add life to your yard. Use bold colors, and interesting shapes to make a flat area stand out.
Features: rain chain, swale, trellis.

▶ CHOOSE YOUR PLANTS

Vignettes Outlined By Color



1. Choose the design vignette that best fits the shape and size of your site.
2. Match the symbols with those in the plant list.
3. Select plants based on your site's sun exposure.
4. Bonus points for choosing locally native plants!



California Native Plant List

South Coast Chapter
South Los Angeles County and South Channel Islands

SYMBOL	PLANT SPECIES	LOCAL	SUN	WATER	H/W	COLOR	WILDLIFE
TREES							
	Blue Elderberry / <i>Sambucus nigra</i>	Y	☀☀	💧💧	15'+ 15'+	●	🐝🐛🦋
	Island Manzanita / <i>Arctostaphylos catalinae</i>	N	☀☀	💧	18' 12'+	●●	🐝🐛🦋
	Laurel Sumac / <i>Malosma laurina</i>	Y	☀☀	💧	15' 15'	●	🐝🐛🦋
	Island Ironwood / <i>Lyonothamnus floribundus</i>	Y	☀☀	💧	20' 15'	●	🐝🐛🦋
LARGE SHRUBS							
	Lemonadeberry / <i>Rhus integrifolia</i>	Y	☀☀	💧	12' 12'	●	🐝🐛🦋
	Toyon / <i>Heteromeles arbutifolia</i>	Y	☀☀	💧	15' 15'	●	🐝🐛🦋
	Coyote Bush / <i>Baccharis pilularis</i>	Y	☀☀	💧	6'-8' 6'	●	🐝🐛🦋
	Bladderpod / <i>Peritoma arborea</i>	Y	☀☀	💧	6' 6'	●	🐝🐛🦋
	Frosty Blue California Lilac / <i>Ceanothus 'Frosty Blue'</i>	N	☀☀	💧	6-10' 8'	●	🐝🐛🦋
MEDIUM SHRUBS							
	Evergreen						
	Purple Sage / <i>Salvia leucophylla</i>	Y	☀☀	💧	4' - 5' 5' - 6'	●	🐝🐛🦋
	Black Sage / <i>Salvia mellifera</i>	Y	☀☀	💧	4' - 5' 4' - 5'	●	🐝🐛🦋
	California Buckwheat / <i>Eriogonum fasciculatum</i>	Y	☀☀	💧	3' 4' - 6'	●	🐝🐛🦋
	Ashleaf Buckwheat / <i>Eriogonum cinereum</i>	Y	☀☀	💧	3' 5' - 6'	●	🐝🐛🦋
	California Sagebrush / <i>Artemisia californica</i>	Y	☀☀	💧	4' 4' - 5'	—	🐝🐛🦋
	Howard McMinn Manzanita / <i>Arctostaphylos 'Howard McMinn'</i>	N	☀☀	💧	6' 6'	●●	🐝🐛🦋
	Deciduous						
	Bush Sunflower / <i>Encelia californica</i>	Y	☀☀	💧	3' 6'	●	🐝🐛🦋
SMALL SHRUBS							
	Coastal Buckwheat / <i>Eriogonum parvifolium</i>	Y	☀☀	💧	2' 4'	●●	🐝🐛🦋
	Deer Weed / <i>Acmispon glaber</i>	Y	☀☀	💧	3' 3'	●	🐝🐛🦋
	Sticky Monkeyflower / <i>Mimulus aurantiacus</i>	Y	☀☀☀	💧	2' 2'	●	🐝🐛🦋
	Silver Lace / <i>Constancea nevini</i>	N	☀☀☀	💧	3' 4'	●	🐝🐛🦋
	Conejo Buckwheat / <i>Eriogonum crocatum</i>	N	☀☀☀	💧	2' 3'	●	🐝🐛🦋
	Island Snapdragon / <i>Gambelia 'Firecracker'</i>	N	☀☀☀	💧	3' 3'	●	🐝🐛🦋
	White Sage / <i>Salvia apiana</i>	N	☀☀☀	💧	3' 3'	●	🐝🐛🦋
	Lilac Verbena / <i>Verbena lilacina</i>	N	☀☀☀	💧	3' 3'	●	🐝🐛🦋
LOW SHRUBS							
	Evergreen						
	Rattlepod / <i>Astragalus trichopodus</i>	Y	☀☀☀	💧	2' 2'	●	🐝🐛🦋
	Horkelia / <i>Horkelia cuneata</i>	Y	☀☀☀	💧	1' 2'	●	🐝🐛🦋
	Blue-Eyed Grass / <i>Sisyrinchium bellum</i>	N	☀☀☀	💧	1' 1'	●	🐝🐛🦋
	Island Coral Bells / <i>Heuchera maxima</i>	N	☀☀☀	💧	1' 2'	●	🐝🐛🦋
	Seaside Daisy / <i>Erigeron glaucus</i>	N	☀☀☀	💧	1' 3'	●	🐝🐛🦋
	Deciduous						
	Four - O' - Clock / <i>Mirabilis californica</i>	Y	☀☀☀	💧	1' 10'	●	🐝🐛🦋
	Narrowleaf Milkweed / <i>Asclepias fascicularis</i>	Y	☀☀☀	💧	1' - 3' 1'	●	🐝🐛🦋
SPREADING GROUNDCOVER							
	California Fuchsia / <i>Epilobium canum</i>	Y	☀☀☀☀	💧	1' 4'	●	🐝🐛🦋
	Silver Carpet Aster / <i>Lessingia 'Silver Carpet'</i>	N	☀☀☀☀	💧	1' 4'+	●	🐝🐛🦋
	Yarrow / <i>Achillea millefolium</i>	N	☀☀☀☀	💧	1' 2'+	●	🐝🐛🦋
	Anchor Bay Ceanothus / <i>Ceanothus 'Anchor Bay'</i>	N	☀☀☀☀	💧	1' 6'+	●	🐝🐛🦋
GRASSES							
	Deer Grass / <i>Muhlenbergia rigens</i>	N	☀☀☀	💧	3' 3'	●	🐝🐛🦋
	Purple Needlegrass / <i>Stipa pulchra</i>	Y	☀☀☀	💧	1' 1'	●	🐝🐛🦋
	Melic Grass / <i>Melica imperfecta</i>	Y	☀☀☀	💧	1' 1'	●	🐝🐛🦋
	Canyon Prince Rye Grass / <i>Leymus 'Canyon Prince'</i>	N	☀☀☀	💧	3' 4'+	—	🐝🐛🦋
SUCCULENTS							
	Bright Green Dudleya / <i>Dudleya virens</i>	Y	☀☀☀	💧	1' 3'	●	🐝🐛🦋
	Prickly-Pear Cactus / <i>Opuntia littoralis</i>	Y	☀☀☀	💧	3' 6'	●	🐝🐛🦋
	Lance Leaf Live-For-Ever / <i>Dudleya lanceolata</i>	Y	☀☀☀	💧	1' 1'	●	🐝🐛🦋
	Shaw's Agave / <i>Agave shawii</i>	N	☀☀☀	💧	3' 5'+	●	🐝🐛🦋
VINES							
	Morning Glory / <i>Calystegia macrostegia</i>	Y	☀☀☀☀	💧	10'+	●	🐝🐛🦋
	Virgin's Bower / <i>Clematis ligusticifolia</i>	Y	☀☀☀☀	💧	15'+	●	🐝🐛🦋
	Climbing Penstemon / <i>Keckiella cordifolia</i>	Y	☀☀☀☀	💧	10'+	●	🐝🐛🦋

SUN

- ☀ Full Sun
- ☀☀ Part Sun
- ☁ Shade

WATER

- 💧 Very Low
- 💧 Low
- 💧 Medium

Plants on this list have been carefully selected by your local **South Coast Chapter**.

CALIFORNIA NATIVE PLANT SOCIETY

Visit Calscape.org to find more plants native to your area.

▶ BRING YOUR DESIGN TO LIFE



Living Soil

Grass Removal – Still need to get rid of your lawn? Try sheet mulching!

- Layers of cardboard and mulch deprive grass of light.
- Layers decompose into nutrients for your new plants.
- Visit [CNPS.org/gardening](https://www.cnps.org/gardening) for more information!

Soil Amendment – Many native plants thrive in what we consider poor soil conditions!

- Add organic compost or worm castings to promote healthy soil.
- AVOID chemical fertilizers and other amendments.

Mulch – Retain moisture, feed your soils, and insulate your plants from heat and cold.

- Use organic, weed free, well-composted mulch with a fine to medium texture.
- Apply after planting, and in late spring and early fall.
- AVOID wood chips, large pieces of bark mulch, and synthetic materials. They deprive your soil and plants of nutrients.
- AVOID weed cloths, plastic, and other weed barriers. They prevent the natural cycle of nutrients through the soils, can kill the living biology in your soil, and are often ineffective at preventing weeds.

Hardscape – Use permeable surfaces wherever possible to allow water to soak in to the soil below.

- Stepping stones
 - Gravel
 - Permeable paving
 - Decomposed granite (DG)
- (at least 1/4" between pavers)



Planting and Watering

Give your new CA native landscape a healthy start by following our online planting and watering guides.

Visit [CNPS.org/gardening](https://www.cnps.org/gardening) to learn more!



Create a Habitat

Water Feature – Pollinators, birds, and wildlife need water too!

- Add a bird bath, fountain or other water feature.

Bare Soil for Bees – Our ground dwelling, native bees need habitat! These bees are not aggressive, and will help keep your landscape flowering!

- Leave a few sunny areas of your landscape mulch free.



Garden Décor – Most importantly, have fun with your garden! Add a personal touch with your favorite décor.

- Boulders
- Rain Chain
- Decorative Pots
- Bird Feeders
- Bench
- Patio Table

The California Native Plant Society is a statewide non-profit organization with 35 local chapters dedicated to the conservation and enjoyment of California's native plants and places.



Garden plans and watercolor courtesy of Kathleen Catton, Feochadan Land Design.
Graphic illustrations by Randi Gunder, Goldenscape Designs.