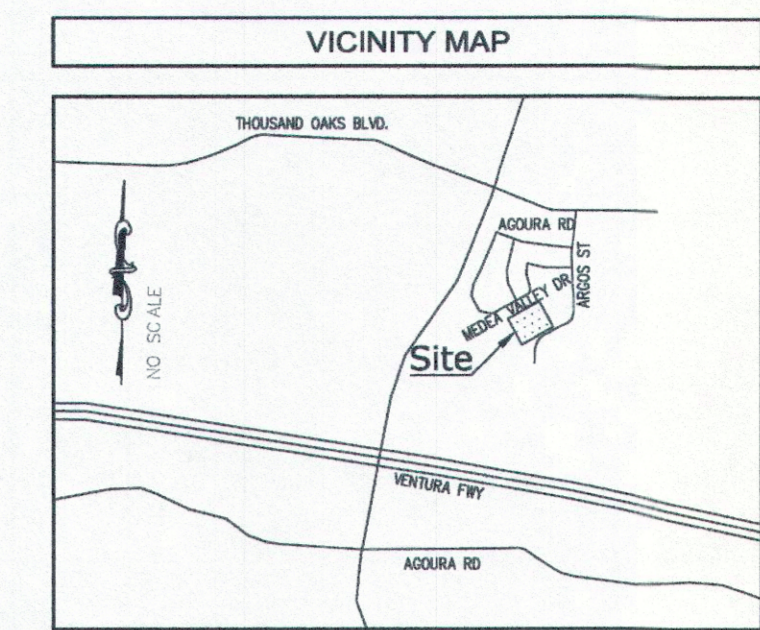
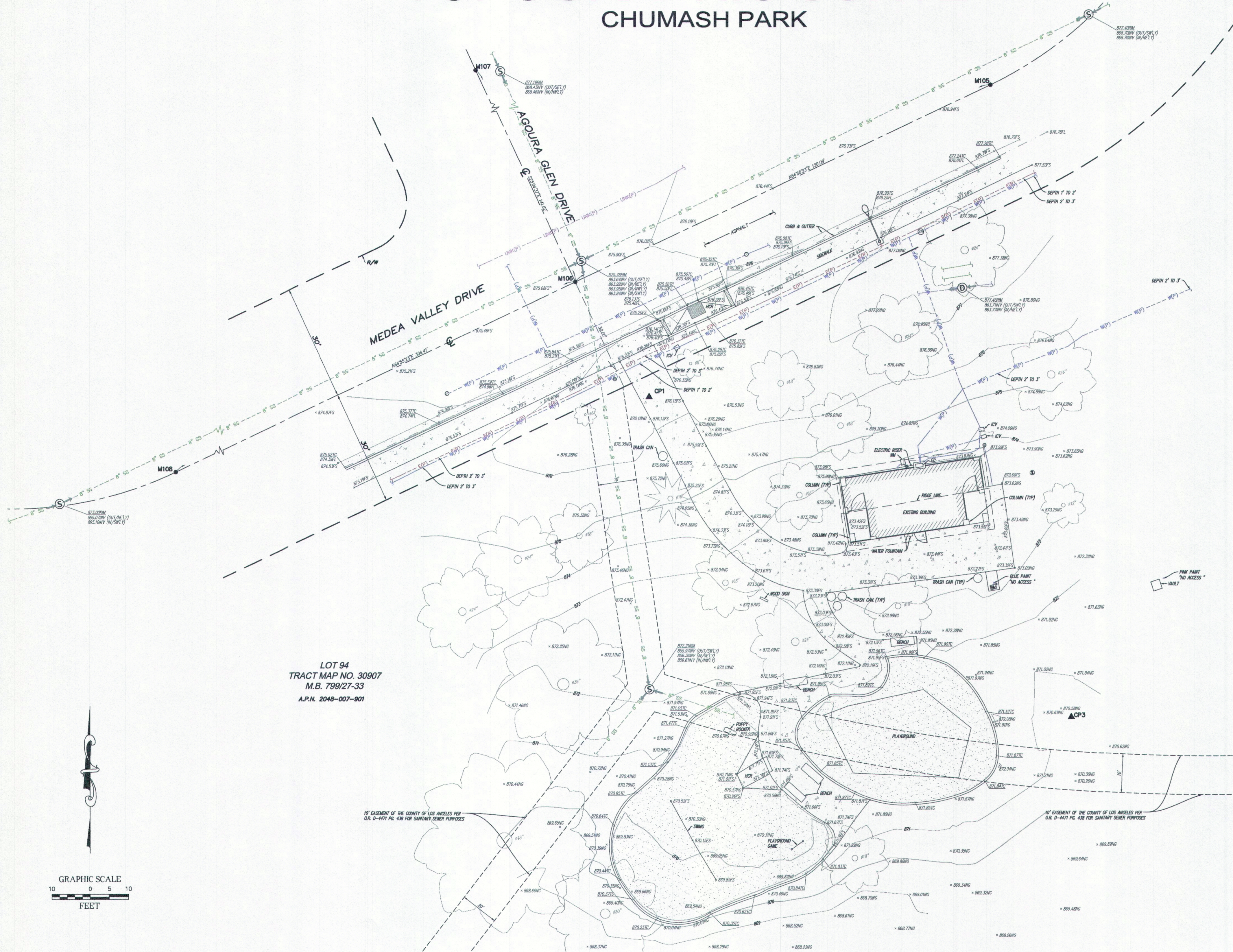


TOPOGRAPHIC SURVEY

CHUMASH PARK



LEGAL DESCRIPTION

NOTE: THIS SURVEY WAS PREPARED WITHOUT THE BENEFIT OF A TITLE REPORT.

LOT 94 OF TRACT MAP NO. 30907, IN THE CITY OF AGOURA HILLS, COUNTY OF LOS ANGELES, STATE OF CALIFORNIA, FILED IN BOOK 798, PAGES 27 THROUGH 33, IN THE OFFICE OF THE COUNTY RECORDER OF SAID COUNTY.

MONUMENT NOTES

MON.#	DESCRIPTION
M105	FD. ROUND HEAD SPIKE PER M.B. 799/27-33, DOWN -0.15 IN ASPHALT.
M106	FD. ROUND HEAD SPIKE PER M.B. 799/27-33, DOWN -0.10 IN ASPHALT.
M107	FD. ROUND HEAD SPIKE PER M.B. 799/27-33, DOWN -0.20 IN ASPHALT.
M108	FD. ROUND HEAD SPIKE PER M.B. 799/27-33, DOWN -0.15 IN ASPHALT.

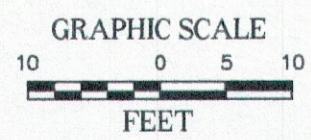
CONTROL POINTS

CP#	NORTHING	EASTING	ELEVATION	DESCRIPTION
CP1	1878043.33	6332871.00	876.22'	SET SCRIBE X
CP2	1877980.47	6332881.73	870.72'	SET 2"X2" HUB & TACK WITH WHISKEY

LEGEND

AP#	ASSESSOR'S PARCEL NUMBER
CONV	CONVEYANCE
C&G	CURB & GUTTER
#	DIAMETER OF EXISTING TREE
FT	FRESH FLOOR
FS	FRESH SURFACE
FL	FLOW LINE
HR	HANDICAP RAMP
HW	WASTEWATER
ICV	IRIGATION CONTROL VALVE
IC	INSTRUMENT CONTROL VALVE
PL	PROPERTY LINE
PL#	PROPERTY LINE
TC	TOP OF CURB
TR	TYPICAL
WB	WATER METER
CP	CONCRETE PAVEMENT CONTROL POINT
DR	DOOR
FD	FOUND MONUMENT AS NOTED
PT	PINE TREE
SC	SEWER CLEAN OUT
SM	SEWER MANHOLE
SN	SEWER
SS	SEWER
SS(0)	SEWER
SS(1)	SEWER
SS(2)	SEWER
SS(3)	SEWER
SS(4)	SEWER
SS(5)	SEWER
SS(6)	SEWER
SS(7)	SEWER
SS(8)	SEWER
SS(9)	SEWER
SS(10)	SEWER
SS(11)	SEWER
SS(12)	SEWER
SS(13)	SEWER
SS(14)	SEWER
SS(15)	SEWER
SS(16)	SEWER
SS(17)	SEWER
SS(18)	SEWER
SS(19)	SEWER
SS(20)	SEWER
SS(21)	SEWER
SS(22)	SEWER
SS(23)	SEWER
SS(24)	SEWER
SS(25)	SEWER
SS(26)	SEWER
SS(27)	SEWER
SS(28)	SEWER
SS(29)	SEWER
SS(30)	SEWER
SS(31)	SEWER
SS(32)	SEWER
SS(33)	SEWER
SS(34)	SEWER
SS(35)	SEWER
SS(36)	SEWER
SS(37)	SEWER
SS(38)	SEWER
SS(39)	SEWER
SS(40)	SEWER
SS(41)	SEWER
SS(42)	SEWER
SS(43)	SEWER
SS(44)	SEWER
SS(45)	SEWER
SS(46)	SEWER
SS(47)	SEWER
SS(48)	SEWER
SS(49)	SEWER
SS(50)	SEWER
SS(51)	SEWER
SS(52)	SEWER
SS(53)	SEWER
SS(54)	SEWER
SS(55)	SEWER
SS(56)	SEWER
SS(57)	SEWER
SS(58)	SEWER
SS(59)	SEWER
SS(60)	SEWER
SS(61)	SEWER
SS(62)	SEWER
SS(63)	SEWER
SS(64)	SEWER
SS(65)	SEWER
SS(66)	SEWER
SS(67)	SEWER
SS(68)	SEWER
SS(69)	SEWER
SS(70)	SEWER
SS(71)	SEWER
SS(72)	SEWER
SS(73)	SEWER
SS(74)	SEWER
SS(75)	SEWER
SS(76)	SEWER
SS(77)	SEWER
SS(78)	SEWER
SS(79)	SEWER
SS(80)	SEWER
SS(81)	SEWER
SS(82)	SEWER
SS(83)	SEWER
SS(84)	SEWER
SS(85)	SEWER
SS(86)	SEWER
SS(87)	SEWER
SS(88)	SEWER
SS(89)	SEWER
SS(90)	SEWER
SS(91)	SEWER
SS(92)	SEWER
SS(93)	SEWER
SS(94)	SEWER
SS(95)	SEWER
SS(96)	SEWER
SS(97)	SEWER
SS(98)	SEWER
SS(99)	SEWER
SS(100)	SEWER

LOT 94
TRACT MAP NO. 30907
M.B. 799/27-33
A.P.N. 2048-007-901



REVISIONS	UTILITY STATEMENT	PREPARED FOR	BASIS OF BEARINGS	BENCHMARK	SURVEYOR OF RECORD
NO. DATE	BY FR	Kimley-Horn	THE BEARINGS SHOWN HEREON ARE BASED UPON THE CALIFORNIA COORDINATE SYSTEM OF 1983, CSDM 83, (2002.7) IN ACCORDANCE TO THE CALIFORNIA PUBLIC RESOURCES CODE SECTIONS 8601-8619; SAID BEARINGS ARE ESTABLISHED LOCALLY UPON FIELD-MEASURED TIES TO THE FOLLOWING LOCAL SMARTNET NORTH AMERICA (SNAKA), CONTINUOUSLY OPERATING REFERENCE STATIONS (CORS).	STATE: CALIFORNIA COUNTY: LOS ANGELES CITY: AGOURA HILLS SITE ADDRESS: 5055 MEDEA VALLEY DR, AGOURA HILLS, CA 91301 ASSESSOR'S PARCEL NO.: 2048-007-901	RESID. COMPLETION DATE: APRIL 07, 2023
0 04/24/23	FR	Underground Service Alert Call: TOLL FREE 1-800-227-2600	SANJUA, CALIF. NORTHING = 1933894.21' EASTING = 6208731.49'	AGOURA HILLS BENCHMARK NORTHING = 1973810.23' EASTING = 6244888.54'	CALVADA SURVEYING, INC. 4111 Janis Circle, Suite 205, Corona, CA 92678 Phone: 951-260-9900 Fax: 951-260-9748 Toll Free: 800-CALVADA www.calvada.com EST. 1989 JOB NO. 23130-PV

FOR REFERENCE ONLY

<p>REVISION # SYMBOL DESCRIPTION OF CHANGE APPROVED DATE</p>	<p>PREPARED BY AND/OR UNDER THE SUPERVISION OF:</p> <p>Kimley-Horn</p> <p>© 2021 KIMLEY-HORN AND ASSOCIATES, INC. 660 S. FIGUEROA STREET, SUITE 2050, LOS ANGELES, CA 90017 PHONE: 213-261-4040 WWW.KIMLEY-HORN.COM</p>	<p>CITY OF AGOURA HILLS APPROVAL</p> <p>Jessica Forte, P.E. CITY ENGINEER</p> <p>7/30/24 DATE 80486 RCE NO. 3/31/25 EXP. DATE</p>	<p>CITY OF AGOURA HILLS</p> <p>CHUMASH PARK RESTROOM REHABILITATION PROJECT</p> <p>EXISTING CONDITIONS</p> <p>SHEET 3 OF 10</p>
--	--	--	--

100% FINAL DESIGN