



**DEPARTMENT OF PLANNING AND
COMMUNITY DEVELOPMENT**

ACTION DATE: February 7, 2008

TO: Planning Commission

APPLICANT: Mark Scheu
Scheu Development Company
4550 East Thousand Oaks Blvd., Suite 202
Westlake Village, CA 91362

CASE NO.: 98-CUP-012 (Lighting Plan)

LOCATION: 30200 and 30300 Agoura Road
(A.P.N. 2061-002-049)

REQUEST: Request for approval of an exterior lighting plan for an office complex.

ENVIRONMENTAL ANALYSIS: Exempt from the requirements of the California Environmental Quality Act per Section 15311.

RECOMMENDATION: Staff recommends the Planning Commission adopt a motion to approve the lighting plan, subject to conditions, based on the findings of the draft resolution.

I. BACKGROUND AND DESCRIPTION

On February 6, 2003, the Planning Commission approved Conditional Use Permit Case No. 98-CUP-012 for the construction of two office buildings to be located on the south side of Agoura Road, at the intersection of Agoura Road and Reyes Adobe Road, within the Ladyface Mountain Specific Plan area (30200 and 30300 Agoura Road). The City Council considered an appeal of the Planning Commission's decision and on June 9, 2004, upheld the decision of the Planning Commission, allowing for the construction of the 71,844 square foot project (Agoura Hills Corporate Ridge), subject to conditions, including the requirement for the applicant to submit a detailed exterior lighting plan for review by the Planning Commission. Specifically, the applicant is required to submit a lighting plan that includes light fixtures that are 1) compliant with the City Lighting Guidelines; 2) decorative in design and architecturally compatible with the building design; 3) directed downward so as not to produce glare onto adjacent parcels or roadways; 4) to not exceed 250 watts and do not exceed one (1) foot-candle of illumination measured at property lines.

The project is currently in building and grading plan check with the Building and Safety Department. The applicant has submitted a lighting plan for the Planning Commission's review that includes proposed exterior light fixtures for the project's parking lots and drive-aisles. Each proposed fixture is circular in shape with a cutoff lens that is flush with the bottom of the fixture. All proposed fixtures and support poles include a bronze finish that is intended to be compatible with the building. Staff recommends that the cement mounting base of each fixture pole be stuccoed and painted to either match the color of the light fixtures or the building. The maximum height allowed by the City for each fixture, including the mounting base, is 16 feet.

The applicant is also proposing metal halide illumination for the fixtures. While the metal halide illumination is energy efficient, the Planning Commission has the discretion to require an even more efficient source of light emitting diodes (LED), if it is deemed more appropriate for the project. No wall mounted fixtures are proposed for this project since they are specifically prohibited in the project's conditions of approval.

Staff finds the proposed lighting plan to be in compliance with the City's Lighting Standards and Guidelines, as well as with the design of the office project. The Lighting Standards and Guidelines call for exterior lighting to be "sensitive to the character of the surrounding neighborhood to reduce negative visual impacts and glare onto residential neighborhoods, the freeway corridor, and public areas. Proximity to hillside areas, park land, rural or other similar areas will also require increased sensitivity to use exterior lighting. Areas of sensitivity may require more subtle lighting. Illumination levels shall not exceed one (1) footcandle at the property lines, measured at ground level. However, pedestrian areas and areas near the building that are accessible to the public and not clearly visible from the street or parking lot should be appropriately illuminated for public safety." The Lighting Standards and Guidelines also call for parking lot lighting to be "designed or selected to compliment the architecture of the building, and provide the minimum safe lighting levels. The required parking lot lighting plan shall be prepared with an understanding of the business hours of operation, as well as the intention to minimize lighting levels when the building is not occupied."

Since the property is within an environmentally sensitive hillside area, with adjacent designated open space land, it is important that the exterior lighting not be imposing. Toward that end, the applicant is proposing light fixtures strictly within the parking lots and drive-aisles. The illumination levels will not exceed one footcandle at the property lines. The project will be prominently visible as the building pads will be higher than any commercial building in the city. In order to retain and ensure the semi-rural ambience of this area of the City and to reduce negative visual impacts within the freeway corridor, it is recommended that the actual illumination levels of all lighting fixtures be subject to field review and approval by the Director of Planning and Community Development upon installation. It is further recommended that exterior illumination levels be reduced by at least 50% at times when the office complex is closed.

Staff would also note that the project was approved subject to the submittal of a sign program for review and approval by the Planning Commission. It is likely that the proposed signs will be illuminated and the level of illumination will be subject to approval by the Planning Commission as part of their review of the sign program.

II. RECOMMENDATION

Staff recommends that the Planning Commission adopt a motion to approve the attached draft Resolution, approving the lighting plan for the office complex, subject to conditions.

III. ATTACHMENTS

- Draft Resolution and Conditions of Approval
- Exhibit A: Light Fixture Details
- Exhibit B: Reduced Project Plan

Case Planner: Doug Hooper, Assistant Director of Community Development

DRAFT RESOLUTION NO. ____

A RESOLUTION OF THE PLANNING COMMISSION OF THE
CITY OF AGOURA HILLS
APPROVING A LIGHTING PLAN
(CASE NO. 98-CUP-012)

THE PLANNING COMMISSION OF THE CITY OF AGOURA HILLS HEREBY FINDS,
RESOLVES AND ORDERS AS FOLLOWING:

Section I. An application was duly filed by Mark Scheu with respect to real property located at 30200 and 30300 Agoura Road (A.P.N. 2061-002-049), requesting approval of a lighting plan for an office complex. A public meeting was duly held for the proposed request on February 7, 2008, at 6:30 p.m. in the City Council Chambers of City Hall, 30001 Ladyface Court, Agoura Hills, California. Notice of the time, date, place and purpose of the aforesaid hearing was duly given.

Section II. Evidence, both written and oral, was duly presented to and considered by the Planning Commission at the aforesaid public meeting.

Section III. The Planning Commission, pursuant to the Agoura Hills Zoning Ordinance, finds as follows:

A. The design and locations of the attached and detached light fixtures that will serve the office complex, as conditioned, allow for attractive and safe illumination through minimal and subtle means that retain the semi-rural ambience of the community, as called for in the City Lighting Standards and Guidelines.

B. The exterior lighting plan, as conditioned, includes light fixtures that are architecturally compatible with the buildings they serve.

C. The exterior lighting plan, as conditioned, includes illumination levels that are sensitive to the character of the surrounding neighborhood to reduce negative visual impacts and glare, as called for in the City's Lighting Standards and Guidelines.

Section IV. The proposed lighting plan includes the placement of minor accessory structures within an approved office complex and is exempt from the California Environmental Quality Act per Section 15311 and does not require adoption of an environmental impact report or negative declaration.

Section V. Based upon the aforementioned findings, the Planning Commission hereby approves the lighting plan for Conditional Use Permit Case No. 98-CUP-012, subject to conditions, with respect to property described in Section 1 hereof.

Draft Resolution No. ____
Page 2

PASSED, APPROVED and ADOPTED this 7th day of February, 2008, by the following vote to wit:

AYES:
NOES:
ABSENT:
ABSTAIN:

John O'Meara, Chairperson

ATTEST:

Doug Hooper, Secretary

CONDITIONS OF APPROVAL (Lighting Plan - Case Nos. 98-CUP-012)

STANDARD CONDITIONS

1. This decision, or any aspect of this decision, can be appealed to the City Council within fifteen (15) days from the date of Planning Commission action, subject to filing the appropriate forms and related fees.
2. This action shall not be effective for any purpose until the applicant has agreed in writing that the applicant is aware of, and accepts all Conditions of Approval of this Permit with the Department of Planning and Community Development. Any conditions on such acceptance or challenges, including the filing of legal action, relating to the permit or the conditions, shall be treated as a failure to meet this Condition and shall nullify and void this permit.
3. Except as modified herein, the approval of this action is limited to and requires complete conformation to the lighting plan exhibits approved by the Planning Commission on February 7, 2008.
4. It is hereby declared to be the intent that if any provision of this Permit is held or declared to be invalid, the Permit shall be void and the privileges granted hereunder shall lapse.
5. It is further declared and made a Condition of this action that if any Condition herein is violated, the Permit shall be suspended and the privileges granted hereunder shall lapse; provided that the applicant has been given written notice to cease such violation and has failed to do so for a period of thirty (30) days.
6. All requirements of the Zoning Ordinance and of the specific Zoning of the property must be complied with unless set forth in the Conditional Use Permit.
7. The lighting plan shall expire upon expiration of Conditional Use Permit Case No. 98-CUP-012.

SPECIAL CONDITIONS

8. The parking lot light poles and fixtures shall not exceed 16 feet in height, including the mounting base. The mounting base shall be stuccoed and painted to either match the light fixtures or the buildings.
9. Landscape/garden lights, if proposed, shall be subject to review and approval by the Director of Planning and Community Development upon approval of the project's final landscape plan.
10. Roof-mounted and/or roof parapet-mounted lighting is prohibited.

Conditions of Approval
(Lighting Plan – 98-CUP-012)
Page 2

11. Exterior illumination levels shall be reduced by at least 50% at times when the office complex is closed.
12. The actual illumination levels of all exterior lighting fixtures shall be subject to field review and approval by the Director of Planning and Community Development, and the lighting may be subject to reduced illumination levels if determined to be necessary for compliance with the City Lighting Standards and Guidelines.

END

EXHIBIT A



FEATURES & SPECIFICATIONS

INTENDED USE — Use for parking lots, streets and surrounding areas.

CONSTRUCTION — Heavy-gauge, spun aluminum housing is fabricated using a computer-controlled, numeric spinning process. Integral structural support plate for mounting arm and electrical components ensures rigidity and strength. Hinged aluminum door frame incorporates stainless steel hardware. Continuous silicone gasketing surrounds lens for weather-tight seal. Optional tool-less hardware is available to maximize installation and maintenance ease. Thermal shock-resistant, tempered drop glass lens.

FINISH — Standard finish is dark bronze electrostatically applied powder paint. Linear embossed accent reveals are standard.

OPTICS — Vertical-lamp reflectors are one-piece spun and formed anodized aluminum. Specialized distributions for flat glass lens. Reflectors are independently designed to optimize light output for the lens type. Anodized, hydroformed aluminum reflectors or high-performance segmented aluminum reflectors also are available for use with horizontal lamps. Mogul-base porcelain socket with copper alloy, nickel-plated screw shell and center contact. Vertically oriented for types VFA, SYM, and ASY distributions. Horizontal position-oriented for types R2, R3 and R4. UL listed 1500W-600V, 4kV pulse rated. Reflectors are rotatable and interchangeable.

ELECTRICAL SYSTEM — All electrical components are mounted to a heavy-gauge plate to maximize heat dissipation and ensure structural integrity for optimal component life. Constant wattage autotransformer ballasts are copper wound and 100% factory tested. Super CWA pulse-start ballasts are required for 320 and 350 watt (must order SCWA option).

INSTALLATION — Extruded aluminum arm with integral splice compartment. Standard arm is 9" in length (12" arm is required for fixtures mounted at 90°). Arms are available for use with multiple poles, wall mounting and unique configurations.

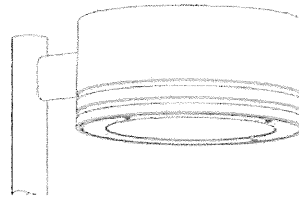
LISTING — UL Listed to US and Canadian safety standards (see Options). NOM Certified (see Options). UL listed for wet locations. Optical chamber is rated IP certified for ingress protection per IEC529 international standards.

Catalog Number	
Notes	Type

Architectural Round Area Full Cutoff Lighting

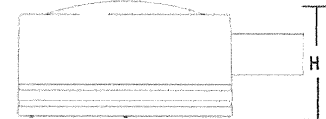
KVR2

METAL HALIDE
250W, 320W, 350W, 400W,
20' to 40' Mounting



Specifications

EPA: 1.60 ft² (49m²) (includes arm)
Diameter: 25.9 (65.7)
Height: 14 (35.5)
Arm length: 9 (22.8)
Weight: 56 lbs (25 kg)



All dimensions are inches (centimeters) unless otherwise specified.

Mounting Option Drilling Template

SPDxx, RPDxx,	5
WBDxx	6
WWDxx	7

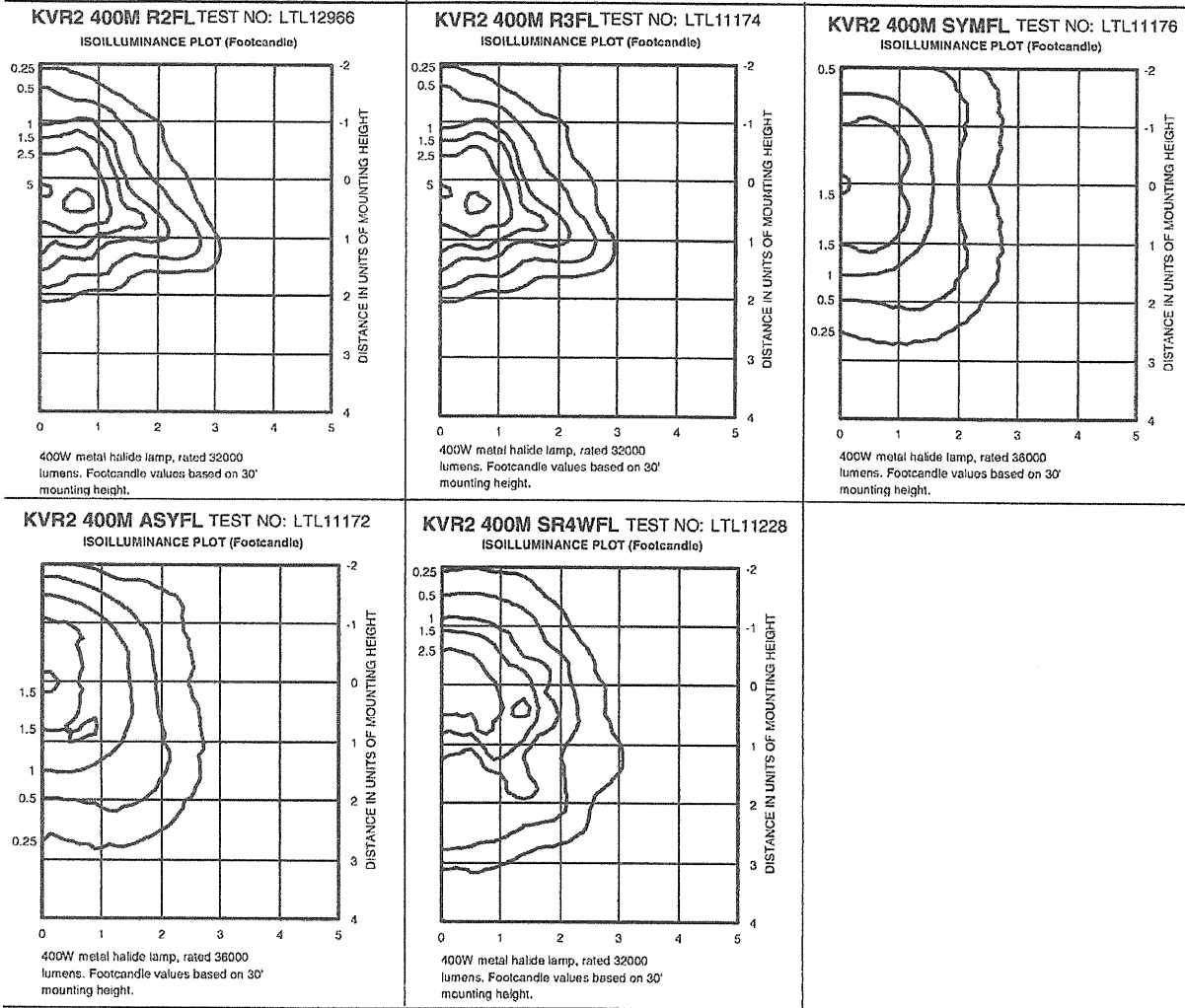
ORDERING INFORMATION

Example: **KVR2 400M SYMFL 120 SPD09 SF DNA LPI**

Choose the boldface catalog nomenclature that best suits your needs and write it in the appropriate blank.

Series	Voltage	Mounting ³	Options																												
KVR2 175M	120	SPD04 Square pole (4" arm)	Shipped installed in Fixture LPI Lamp (standard) TLS Tool-less Access L/LP Less Lamp SF Single fuse (120, 277, 347V; not avail. with TB) DF Double fuse (208, 240, 480V; not avail. with TB) PER NEMA twist-lock receptacle only (photocontrol not included) QRS Quartz restrike system (250W max, lamp not included) QRSTD QRS time delay (250W max, lamp not included) KWI KiloWatch® 120V control relay ⁵ KW4 KiloWatch 277V control relay ⁵ CR Corrosion resistant EHS External houseside shield (matches fixture finish, included in the carton) EHSB External houseside shield black (painted black to maximize light control, included in the carton) CSA Listed and labeled to comply with Canadian Standards SCWA Super CWA Pulse Start Ballast NOM NOM Certified (consult factory) Shipped Separately⁶ PE1 NEMA twist-lock PE (120, 208, 240V) PE3 NEMA twist-lock PE (347V) PE4 NEMA twist-lock PE (480V) PE7 NEMA twist-lock PE (277V)																												
KVR2 250M	208 ¹	RPD04 Round pole (4" arm)																													
KVR2 320M	240 ¹	SPD09 Square pole (9" arm) ⁴																													
KVR2 350M	277	RPD09 Round pole (9" arm) ⁴																													
KVR2 400M	347	SPD12 Square pole (12" arm)																													
	480 ¹	RPD12 Round pole (12" arm)																													
	TB ²	WWD09 Wood pole or wall (9")																													
		WWD12 Wood pole or wall (12" arm)																													
		WBD09 Wall bracket (9" arm)																													
		WBD12 Wall bracket (12" arm)																													
		KWA Mast Arm (external fitter)																													
Distribution			Options																												
Vertical Lamp Distributions: SYMFL Symmetric square, flat lens ASYFL Asymmetric, flat lens VFAFL Vert. forward throw automotive, flat lens Horizontal Lamp Distributions: R2FL Type II Roadway, flat lens R3FL Type III Asymmetric, flat lens		High-performance segmented reflectors: (square aperture) SR2FL Seg. Type II Roadway, flat lens SR3FL Seg. Type III Asymmetric, flat lens SR4SCFL Seg. Type IV For. throw sharp cutoff, flat lens SR4WFL Seg. Type IV For. throw wide, flat lens	SC Shorting cap KVR2VG Vandal guard KVR2EHS External Houseside shield (specify color) Architectural Colors (powder finish)⁸ Standard Colors DDB Dark bronze (standard) DWH White DBL Black Classic Colors DMB Medium bronze DNA Natural aluminum DSS Sandstone DGC Charcoal gray DTG Tennis green DBR Bright red DSB Steel blue Stripping SDOB Dark bronze SOWH White SDBL Black SDNA Natural alum. SDTG Tennis green SOBR Bright red SDBUA Dark blue SDGYM Gray SDYLB Yellow																												
NOTES: 1 Consult factory for availability in Canada. 2 Optional multi-tap ballast (120, 208, 240, 277V). (120, 277, 347V in Canada.) 3 For arm mounting, refer to technical data section in the Outdoor binder for drilling template. 4 SPD12 or RPD12 must be used when two or more luminaires are oriented on a 90° drilling pattern. 5 For specific ordering info., consult factory. 6 May be ordered as accessory. 7 Use KVR2EHS SR for segmented reflectors. 8 Additional architectural colors available; please see Architectural Colors Brochure on www.lithonia.com. 9 Order as separate line item. Important with this accessory, a RPD12 mounting arm must be ordered on the fixture.			Accessories: Tenon Mounting Slipfitter⁹ Number of fixtures <table border="1"> <tr> <th>Tenon O.D.</th> <th>One</th> <th>Two@180°</th> <th>Two@90°</th> <th>Three@120°</th> <th>Three@90°</th> <th>Four@90°</th> </tr> <tr> <td>2-3/8" (6)</td> <td>T20-190</td> <td>T20-280</td> <td>T20-290</td> <td>T20-320</td> <td>T20-390</td> <td>T20-490</td> </tr> <tr> <td>2-7/8" (7.3)</td> <td>T25-190</td> <td>T25-280</td> <td>T25-290</td> <td>T25-320</td> <td>T25-390</td> <td>T25-490</td> </tr> <tr> <td>4" (10.2)</td> <td>T30-190</td> <td>T30-280</td> <td>T30-290</td> <td>T30-320</td> <td>T30-390</td> <td>T30-490</td> </tr> </table>	Tenon O.D.	One	Two@180°	Two@90°	Three@120°	Three@90°	Four@90°	2-3/8" (6)	T20-190	T20-280	T20-290	T20-320	T20-390	T20-490	2-7/8" (7.3)	T25-190	T25-280	T25-290	T25-320	T25-390	T25-490	4" (10.2)	T30-190	T30-280	T30-290	T30-320	T30-390	T30-490
Tenon O.D.	One	Two@180°	Two@90°	Three@120°	Three@90°	Four@90°																									
2-3/8" (6)	T20-190	T20-280	T20-290	T20-320	T20-390	T20-490																									
2-7/8" (7.3)	T25-190	T25-280	T25-290	T25-320	T25-390	T25-490																									
4" (10.2)	T30-190	T30-280	T30-290	T30-320	T30-390	T30-490																									

KVR2 Arm-Mounted Area Lighting Metal Halide



NOTES:

- 1 Photometric data for other distributions can be accessed from the Lithonia Lighting website. (www.lithonia.com)
- 2 For electrical characteristics, consult technical data tab.
- 3 Tested to current IES and NEMA standards under stabilized laboratory conditions. Various operating factors can cause differences between laboratory and actual field measurements. Dimensions and specifications are based on the most current available data and are subject to change.

Mounting Height Correction Factor

(Multiply the fc level by the correction factor)

- 20 ft.= 2.25
- 25 ft.= 1.44
- 35 ft.= 0.73
- 40 ft.= 0.56

$$\left(\frac{\text{Existing Mounting Height}}{\text{New Mounting Height}} \right)^2 = \text{Correction factor}$$



KVR2-M-FL

© 2004 Acuity Lighting Group, Inc., 5/04

Lithonia Lighting
Outdoor Lighting
One Lithonia Way, Conyers, GA 30012
Phone: 770-922-9000 Fax: 770-918-1209
In Canada: 160 avenue Labrosse, Point-Claire, P.Q. H9R 1A1
www.lithonia.com

Architectural Round Vertical

Area Lighting

KVR

Intended Use

For streets, parking lots and surrounding areas.

Features

Housing – Cylindrically shaped, rugged, heavy-gauge, spun aluminum housing. Fully gasketed for weathertight integrity. Standard finish is dark bronze (DDB) polyester powder. Other architectural colors available.

Lens – Impact-resistant, clear, 3/16" thick, tempered drop lens.

Mounting – Extruded-aluminum arm with integral splice compartment for wall or pole mounting is shipped in fixture carton. Optional mountings available.

Optics – Segmented, anodized aluminum optics are interchangeable and rotatable. Vertically lamped sealed optics include

symmetric, symmetric cutoff, asymmetric and asymmetric cutoff. Design redirects light around arc-tube for optimum lamp life and maximum efficiency. Five horizontal lamp cutoff distributions available: R2 (Roadway), R3 (Asymmetric), R4SC (Forward Throw, Sharp Cutoff), R4W (Wide, Forward Throw) and R5S (Symmetric).

Electrical – Constant-wattage autotransformer, high-power factor ballast. Ballast is copper wound and 100% factory tested. Removable power tray and positive locking disconnect plug.

Socket – Mogul-base porcelain socket with copper alloy, nickel-plated screw shell and center contact. UL listed 1500W, 600V.

Listings – UL Listed (standard). CSA Certified (see Options). UL listed for wet locations.



Ordering Information

Example: **KVR2 250S SYM 120 RPVD06 SF**

Designation	Distribution	Mounting ⁵	Options/Accessories
High Pres.	Vertical lamp distributions	Included	Installed
Sodium	SYM Symmetric, semi-cutoff ²	SPVD04 4" square pole arm ^{7,8} (std.)	SF Single fuse, 120V, 277V, 347V (n/a TB)
KVR2 250S	SYMC Symmetric, full-cutoff (n/a 1000S)	SPVD06 6" square pole arm ⁸	DF Double fuse, 208V, 240V, 480V (n/a TB)
KVR2 400S	ASY Asymmetric, semi-cutoff	SPVD09 9" square pole arm	PER NEMA twist-lock receptacle only (no photocontrol)
KVR3 1000S	ASYS Asymmetric, full-cutoff	SPVD12 12" square pole arm	QRS Quartz restrike system (250W max., 120V only, lamp not included)
Metal Halide	Horizontal lamp distributions	SPVD14 14" square pole arm	GFL Glass flat lens (n/a HPS)
KVR2 175M	R2 Type II roadway (n/a 1000S) ³	RPVD04 4" round pole arm ^{7,8}	CR Corrosion-resistant finish
KVR2 200M ¹	R3 Type III asymmetric (n/a 1000S) ³	RPVD06 6" square pole arm ⁸	EC Emergency circuit
KVR2 250M	R4SC Type IV forward throw, sharp cutoff (n/a 1000S)	RPVD09 9" round pole arm	LS Lamp support (size 3 horizontal optics only)
KVR2 320M ¹	R4W Type IV forward throw (1000M only) ³	RPVD12 12" square pole arm	HS House-side shield (ASY, ASYC only. R2, R3 shipped separately)
KVR2 350M ¹	R5S Type V symmetric square (1000M only) ³	RPVD14 14" square pole arm	SCWA Super CWA pulse start ballast (n/a with HPS or 175M or 1000M horizontal)
KVR2 400M		WWVD09 9" wood pole or wall	CSA CSA Certified
KVR3 1000M		WBVD09 9" wall bracket	
	Voltage	Shipped separately	
	120, 208 ⁴ , 240 ⁴ , 277, 347, 480 ⁴ , TB ⁵	PT4 Posttop, 4" OD open-top pole ⁹	For optional architectural colors, see page 485.
		PT45 Posttop, 4 1/2" OD open-top pole ⁹	Shipped separately
		PT5 Posttop, 5" OD open-top pole ⁹	PE1 NEMA twist-lock PE (120V-240V)
		PT6 Posttop, 6" OD open-top pole ⁹	PE3 NEMA twist-lock PE (347V)
		RPF20 Round pole fitter (2 3/8" OD tenon)	PE4 NEMA twist-lock PE (480V)
		RPF25 Round pole fitter (2 7/8" OD tenon)	PE7 NEMA twist-lock PE (277V)
			SC Shorting cap for PER option

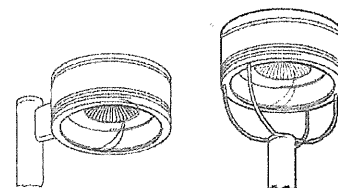


NOTES:

- Must be ordered with SCWA.
- Meets IES cutoff criteria for 1000W high pressure sodium luminaire.
- 400W and 1000W metal halide require reduced jacket lamp. Not available with KVR3 1000S.
- Consult factory for availability in Canada.
- Optional multi-tap ballast (120V, 208V, 240V, 277V; 120V, 277V, 347V in Canada).
- For arm mounting, refer to technical data section in Outdoor binder for drilling template.
- For KVR2 luminaires, SPVD06, RPVD06, SPVD09, RPVD09, SPVD12 or RPVD12 must be used when two or more luminaires oriented on 90° drilling pattern.
- For 1000W luminaires, SPVD09, RPVD09, SPVD12 or RPVD12 must be used when two or more luminaires oriented on 90° drilling pattern.
- For use with round poles only.

Dimensions are shown in inches (centimeters) unless otherwise noted.

	KVR2 (arm)	KVR2 (post)	KVR3 (arm)	KVR3 (post)
EPA	1.5 ft ² (.14 m ²)	1.6 ft ² (.15 m ²)	2.0 ft ² (.19 m ²)	2.2 ft ² (.20 m ²)
Diameter	25 (63.5)	25 (63.5)	29 (73.7)	29 (73.7)
Height	16 3/4 (42.5)	23 7/8 (60.6)	18 1/2 (47.0)	18 1/2 (47.0)
Max. weight	65 lbs. (29.5 kg)	75 lbs. (34.0 kg)	70 lbs. (31.8 kg)	80 lbs. (36.3 kg)



LITHONIA LIGHTING

www.lithonia.com
keyword: KVR

Outdoor / PSG8 437



FEATURES & SPECIFICATIONS

INTENDED USE — Use for parking lots, streets and surrounding areas.

CONSTRUCTION — Heavy-gauge, spun aluminum housing is fabricated using a computer-controlled numeric spinning process. Integral structural support plate for mounting arm and electrical components ensures rigidity and strength. Hinged, aluminum door frame incorporates stainless steel hardware. Continuous silicone gasketing surrounds lens for weather-tight seal. Optional tool-less hardware is available to maximize installation and maintenance ease. Thermal, shock-resistant, tempered drop glass lens.

FINISH — Standard finish is dark bronze, electrostatically applied powder paint. Linear embossed accent reveals are standard.

OPTICS — Vertical-lamp reflectors are one-piece spun and formed anodized aluminum. Specialized distributions for contoured drop glass lens. Reflectors are independently designed to optimize light output for the lens type. Anodized hydroformed aluminum reflectors also are available for use with horizontal lamps. Mogul-base porcelain socket with copper alloy, nickel-plated screw shell and center contact. Vertically oriented for types VFA, SYM and ASY distributions. Horizontal position-oriented for types R2 and R3. UL listed 1500W-600V, 4kV pulse rated. Reflectors are rotatable and interchangeable.

ELECTRICAL SYSTEM — All electrical components are mounted to a heavy-gauge plate to maximize heat dissipation and ensure structural integrity for optimal component life. Constant wattage autotransformer ballasts are copper wound and 100% factory tested. Super CWA pulse-start ballasts are required for 320 and 350 watt (must order SCWA option).

INSTALLATION — Extruded aluminum arm with integral splice compartment. Standard arm is 9" in length (12" arm is required for fixtures mounted at 90°). Arms are available for use with multiple poles, wall mounting and unique configurations.

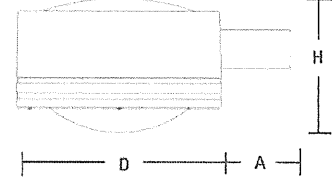
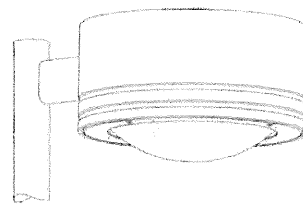
LISTING — UL Listed to US and Canadian safety standards (see Options). NOM Certified (see Options). UL listed for wet locations. Optical chamber is rated IP certified for ingress protection per IEC529 international standards.

Catalog Number	
Notes	Type

Architectural Round Area Lighting

KVR2

METAL HALIDE
250W, 320W, 350W, 400W,
20' to 40' Mounting



Specifications

EPA: 1.60 R² (.49m²) (includes arm)
Diameter: 25.9 (65.7)
Height: 17 (43.1)
Arm length: 9 (22.8)
Weight: 56 lbs (25 kg)

All dimensions are inches (centimeters) unless otherwise specified.

Mounting Option	Drilling Template
SPDxx, RPDxx,	5
WBDxx	6
VWDxx	7

ORDERING INFORMATION

Example: **KVR2 400M SYMDL 120 SPD09 SF DNA LPI**

Choose the boldface catalog nomenclature that best suits your needs and write it in the appropriate blank.

Series	Voltage	Mounting ¹	Options
KVR2 175M	120	SPD04 Square pole (4" arm)	Shipped Installed In Fixture
KVR2 250M	208 ¹	RPD04 Round pole (4" arm)	LPI Lamp (standard)
KVR2 320M	240 ¹	SPD09 Square pole (9" arm) ⁴	TLS Tool-less Access
KVR2 350M	277	RPD09 Round pole (9" arm) ⁴	L/LP Less Lamp
KVR2 400M	347	SPD12 Square pole (12" arm)	SF Single fuse (120, 277, 347V; not avail. with TB)
	480 ¹	RPD12 Round pole (12" arm)	DF Double fuse (208, 240, 480V; not avail. with TB)
	TB ²	VWWD09 Wood pole or wall (9")	PER NEMA twist-lock receptacle only (photocontrol not included)
		VWWD12 Wood pole or wall (12" arm)	QRS Quartz restrike system (250W max, lamp not included)
		WBD09 Wall bracket (9" arm)	QRSTO QRS time delay (250W max, lamp not included)
		WBD12 Wall bracket (12" arm)	KWI KiloWatch [®] 120V control relay ⁶
		KWA Mast Arm (external fitter)	KW4 KiloWatch 277V control relay ⁶
			CR Corrosion resistant
			EHS External houseside shield (matches fixture finish, included in the carton)
			EHSB External houseside shield black (painted black to maximize light control, included in the carton)
			CSA Listed and labeled to comply with Canadian Standards
			SCWA Super CWA Pulse Start Ballast
			NOM NOM Certified (consult factory)
			Shipped Separately ⁶
			PE1 NEMA twist-lock PE (120, 208, 240V)
			PE3 NEMA twist-lock PE (347V)
			PE4 NEMA twist-lock PE (480V)
			PE7 NEMA twist-lock PE (277V)
			SC Shorting cap
			KVR2VG Vandal guard
			KVRZENS External Houseside shield (specify color)
			Architectural Colors (powder finish) ⁷
			Standard Colors
			DOB Dark bronze (standard)
			DWH White
			DBL Black
			Classic Colors
			DWB Medium bronze
			DNA Natural aluminum
			DSS Sandstone
			DGC Charcoal gray
			DTG Tennis green
			DBR Bright red
			DSB Steel blue
			Striping
			SDOB Dark bronze
			SDWH White
			SDBL Black
			SDNA Natural aluminum
			SDTG Tennis green
			SDBR Bright red
			SDBUA Dark blue
			SDGYM Gray
			SDYLB Yellow

Distribution

Vertical Lamp Distributions:
SYMDL Symmetric square, drop lens
ASYDL Asymmetric, drop lens
VFADL Vert. forward throw automotive, drop lens

Horizontal Lamp Distributions:
R2DL Type II Roadway, drop lens
R3DL Type III Asymmetric, drop lens

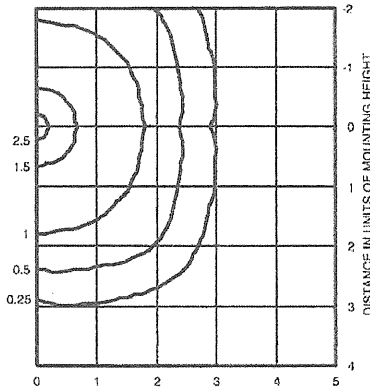
- NOTES:
- Consult factory for availability in Canada.
 - Optional multi-tap ballast (120, 208, 240, 277V), (120, 277, 347V in Canada).
 - For arm mounting, refer to technical data section in the Outdoor binder for drilling template.
 - SPD12 or RPD12 must be used when two or more luminaires are oriented on a 90° drilling pattern.
 - For specific ordering info., consult factory.
 - May be ordered as accessory.
 - Additional architectural colors available; please see Architectural Colors Brochure on www.lithonia.com.
 - Order as separate line item. Important with this accessory, a RPD12 mounting arm must be ordered on the fixture.

Accessories: Tenon Mounting Slipfitter⁸

Tenon O.D.	Number of fixtures						
	One	Two@180°	Two@90°	Three@120°	Three@90°	Four@90°	
2-3/8" (6)	T20-190	T20-280	T20-290	T20-320	T20-390	T20-490	
2-7/8" (7.3)	T25-190	T25-280	T25-290	T25-320	T25-390	T25-490	
4" (10.2)	T30-190	T30-280	T30-290	T30-320	T30-390	T30-490	

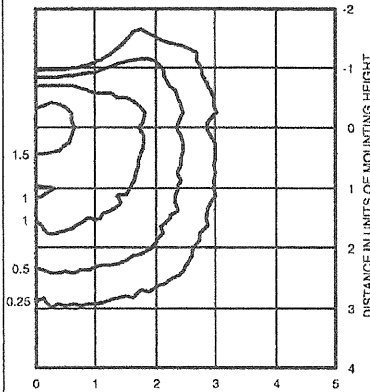
KVR2 Arm-Mounted Area Lighting Metal Halide

KVR2 400M SYMDL TEST NO: LTL11175
ISOILLUMINANCE PLOT (Footcandle)



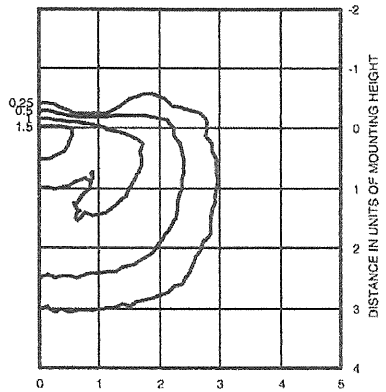
400W metal halide lamp, rated 36000 lumens. Footcandle values based on 30' mounting height.

KVR2 400M ASYDL TEST NO: LTL11170
ISOILLUMINANCE PLOT (Footcandle)



400W metal halide lamp, rated 36000 lumens. Footcandle values based on 30' mounting height.

KVR2 400M ASYDL EHS TEST NO: LTL11171
ISOILLUMINANCE PLOT (Footcandle)



400W metal halide lamp, rated 36000 lumens. Footcandle values based on 30' mounting height.

NOTES:

- 1 Photometric data for other distributions can be accessed from the Lithonia Lighting website. (www.lithonia.com)
- 2 For electrical characteristics, consult technical data tab.
- 3 Tested to current IES and NEMA standards under stabilized laboratory conditions. Various operating factors can cause differences between laboratory and actual field measurements. Dimensions and specifications are based on the most current available data and are subject to change.

Mounting Height Correction Factor

(Multiply the fc level by the correction factor)

- 20 ft.= 2.25
- 25 ft.= 1.44
- 35 ft.= 0.73
- 40 ft.= 0.56

$$\left(\frac{\text{Existing Mounting Height}}{\text{New Mounting Height}} \right)^2 = \text{Correction factor}$$



KVR2-M-DL

© 2004 Acuity Lighting Group Inc., 5/04

Lithonia Lighting
Outdoor Lighting
One Lithonia Way, Conyers, GA 30012
Phone: 770-922-9000 Fax: 770-918-1209
In Canada: 160 avenue Labrusse, Point-Claire, P.Q. H9R 1A1
www.lithonia.com

EXHIBIT B

NO.	DATE	REVISION
1		
2		
3		
4		
5		
6		
7		
8		
9		
10		
11		
12		
13		
14		
15		
16		
17		
18		
19		
20		
21		
22		
23		
24		
25		
26		
27		
28		
29		
30		
31		
32		
33		
34		
35		
36		
37		
38		
39		
40		
41		
42		
43		
44		
45		
46		
47		
48		
49		
50		
51		
52		
53		
54		
55		
56		
57		
58		
59		
60		
61		
62		
63		
64		
65		
66		
67		
68		
69		
70		
71		
72		
73		
74		
75		
76		
77		
78		
79		
80		
81		
82		
83		
84		
85		
86		
87		
88		
89		
90		
91		
92		
93		
94		
95		
96		
97		
98		
99		
100		

HENRY DONG & ASSOCIATES
 ARCHITECTS, AIA
 30200 & 30300 AGOURA ROAD
 AGOURA HILLS, CA 91201
 (909) 261-8888



ARCHITECTURE • PLANNING • INTERIORS

AGOURA HILLS CORPORATE POINT
 30200 & 30300 AGOURA ROAD
 AGOURA HILLS, CA

SITE PLAN

A1.01

PROJECT DATA
 PROJECT NO. 02-0001
 CLIENT AGOURA HILLS CORPORATE POINT
 ARCHITECT HENRY DONG & ASSOCIATES, AIA
 DATE 02/01/02

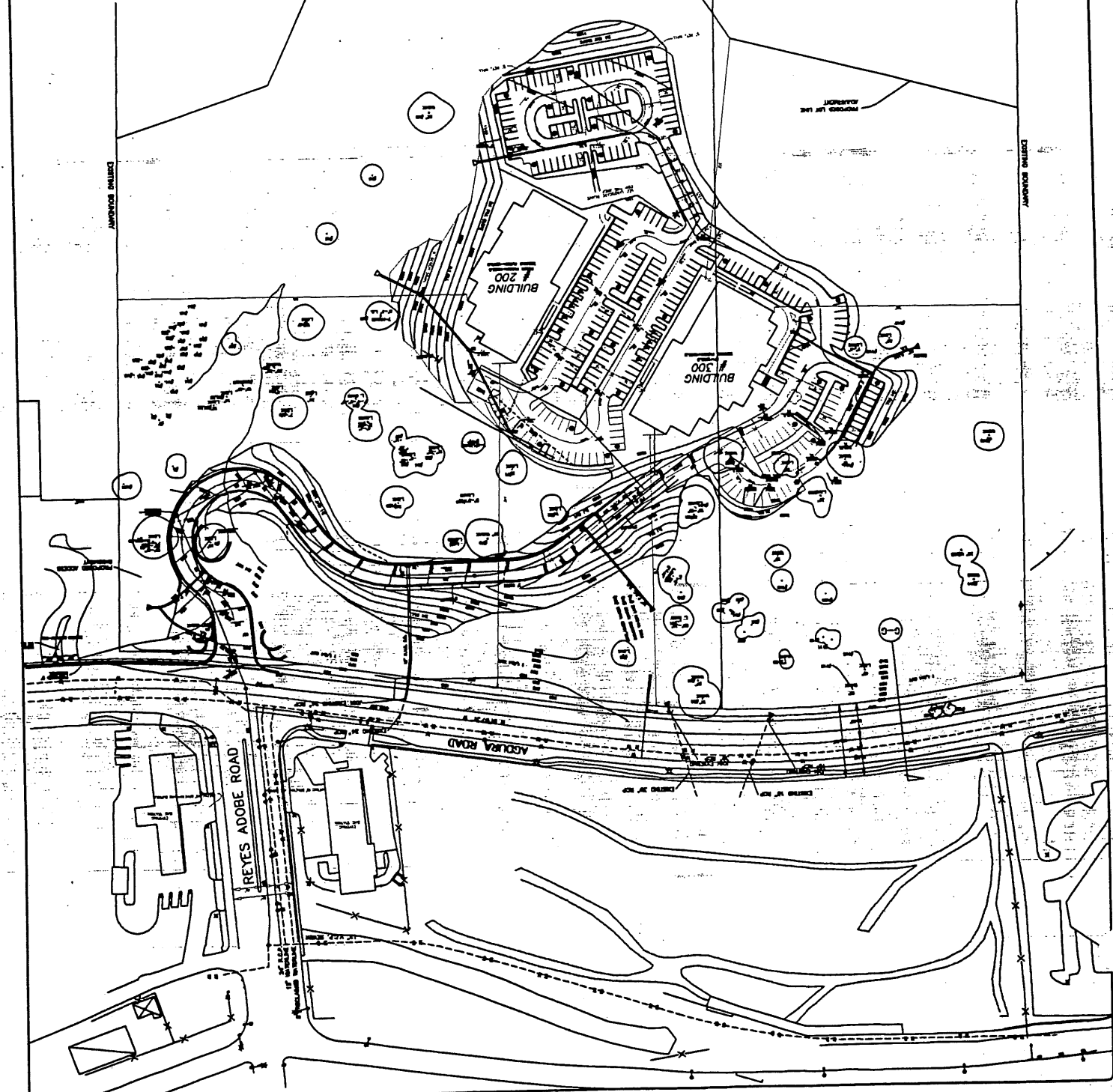
DESCRIPTION
 THIS SITE PLAN SHOWS THE LAYOUT OF THE BUILDINGS, PARKING, AND LANDSCAPE FOR THE AGOURA HILLS CORPORATE POINT. THE BUILDINGS ARE LOCATED ON THE EAST SIDE OF THE SITE, AND THE PARKING IS LOCATED TO THE WEST. THE LANDSCAPE IS DESIGNED TO PROVIDE A PLEASANT ENVIRONMENT FOR THE BUILDINGS.

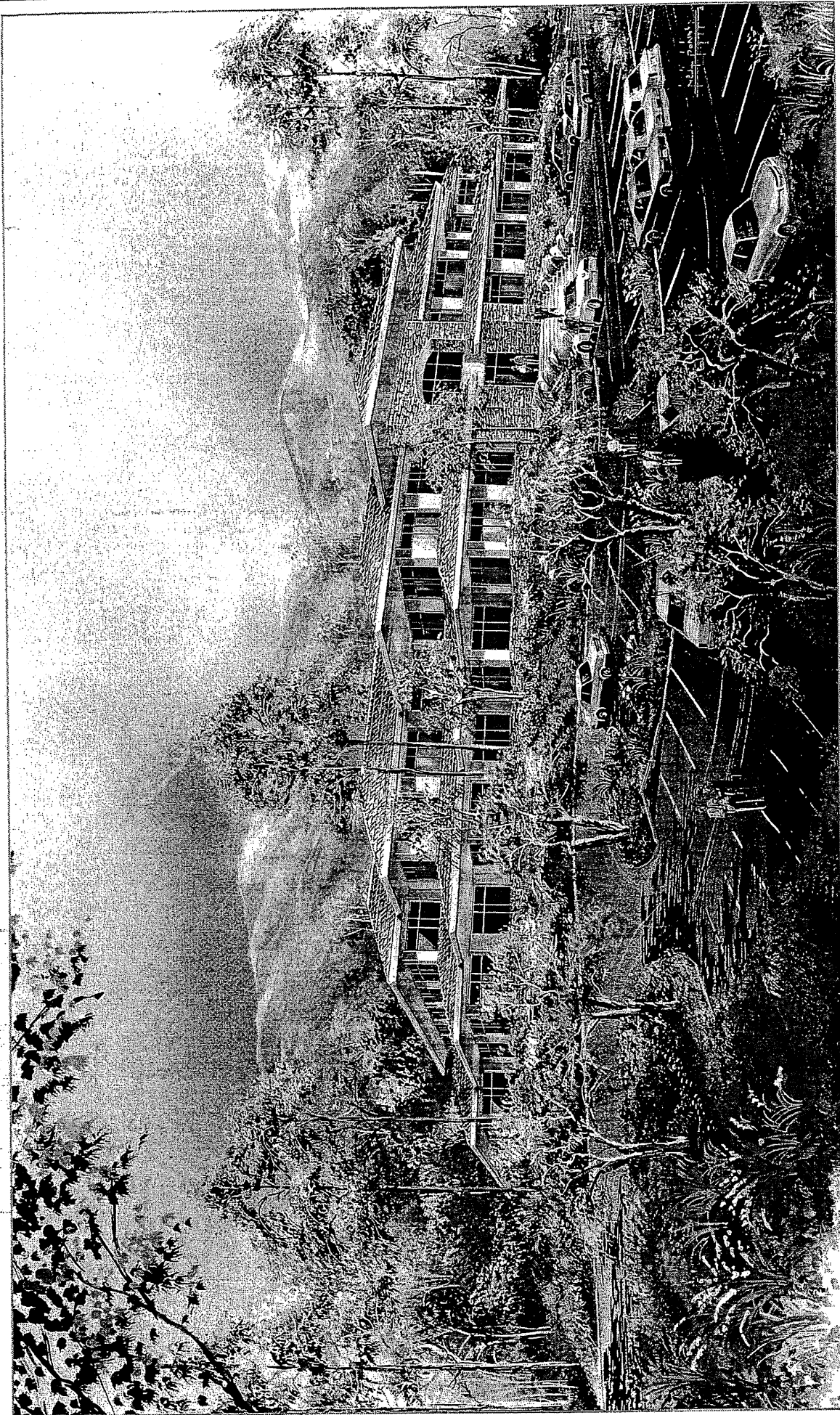
NOTES
 1. ALL DIMENSIONS ARE IN FEET AND INCHES.
 2. ALL DISTANCES ARE MEASURED FROM THE CENTERLINE OF THE ROAD.
 3. ALL DISTANCES ARE MEASURED FROM THE CENTERLINE OF THE ROAD.
 4. ALL DISTANCES ARE MEASURED FROM THE CENTERLINE OF THE ROAD.
 5. ALL DISTANCES ARE MEASURED FROM THE CENTERLINE OF THE ROAD.
 6. ALL DISTANCES ARE MEASURED FROM THE CENTERLINE OF THE ROAD.
 7. ALL DISTANCES ARE MEASURED FROM THE CENTERLINE OF THE ROAD.
 8. ALL DISTANCES ARE MEASURED FROM THE CENTERLINE OF THE ROAD.
 9. ALL DISTANCES ARE MEASURED FROM THE CENTERLINE OF THE ROAD.
 10. ALL DISTANCES ARE MEASURED FROM THE CENTERLINE OF THE ROAD.

NO.	DESCRIPTION	AREA (SQ. FT.)
1	BUILDING # 200	10,000
2	BUILDING # 300	15,000
3	PARKING	5,000
4	LANDSCAPE	2,000
5	TOTAL	32,000

NO.	DESCRIPTION	AREA (SQ. FT.)
1	BUILDING # 200	10,000
2	BUILDING # 300	15,000
3	PARKING	5,000
4	LANDSCAPE	2,000
5	TOTAL	32,000

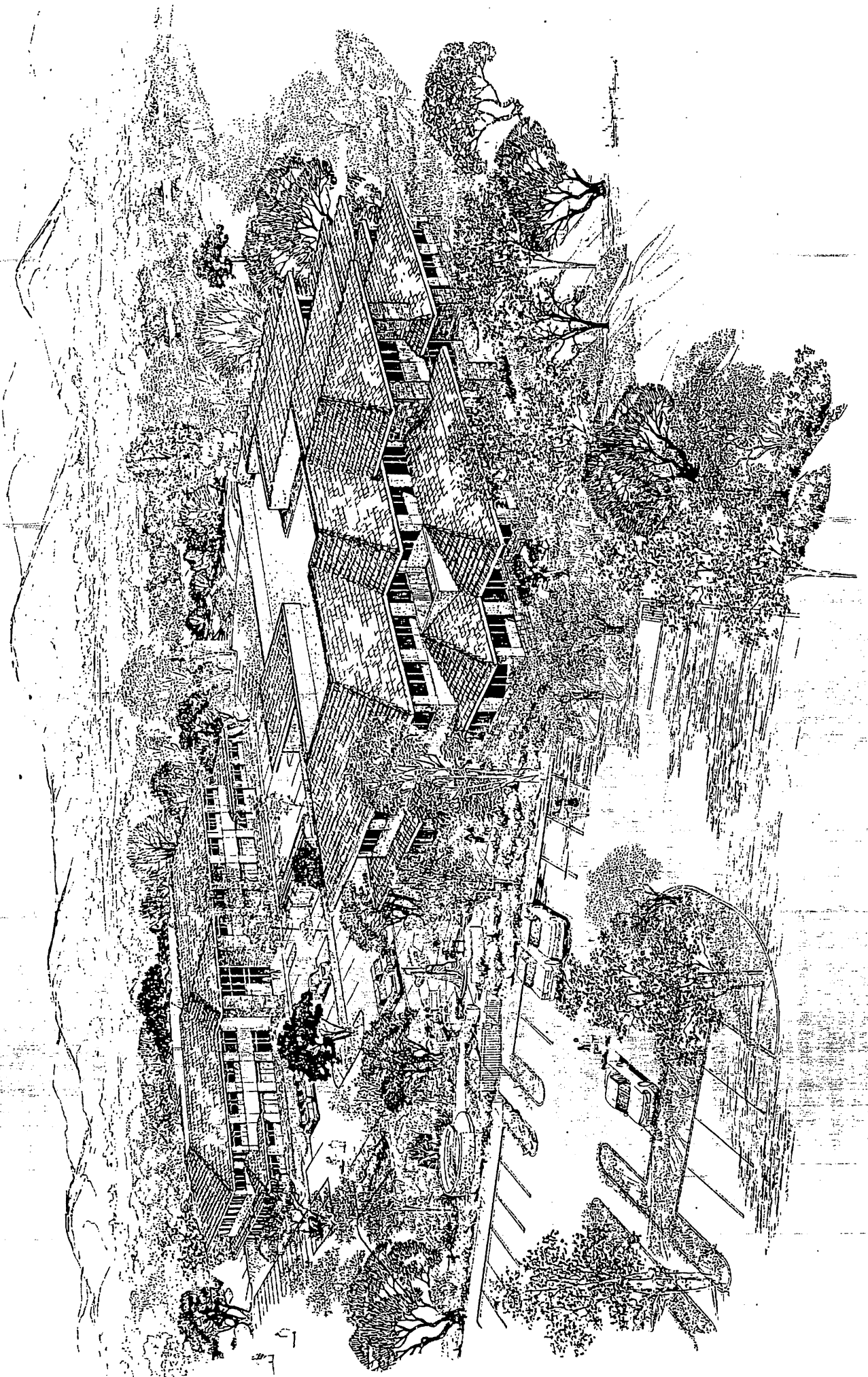
NO.	DESCRIPTION	AREA (SQ. FT.)
1	BUILDING # 200	10,000
2	BUILDING # 300	15,000
3	PARKING	5,000
4	LANDSCAPE	2,000
5	TOTAL	32,000

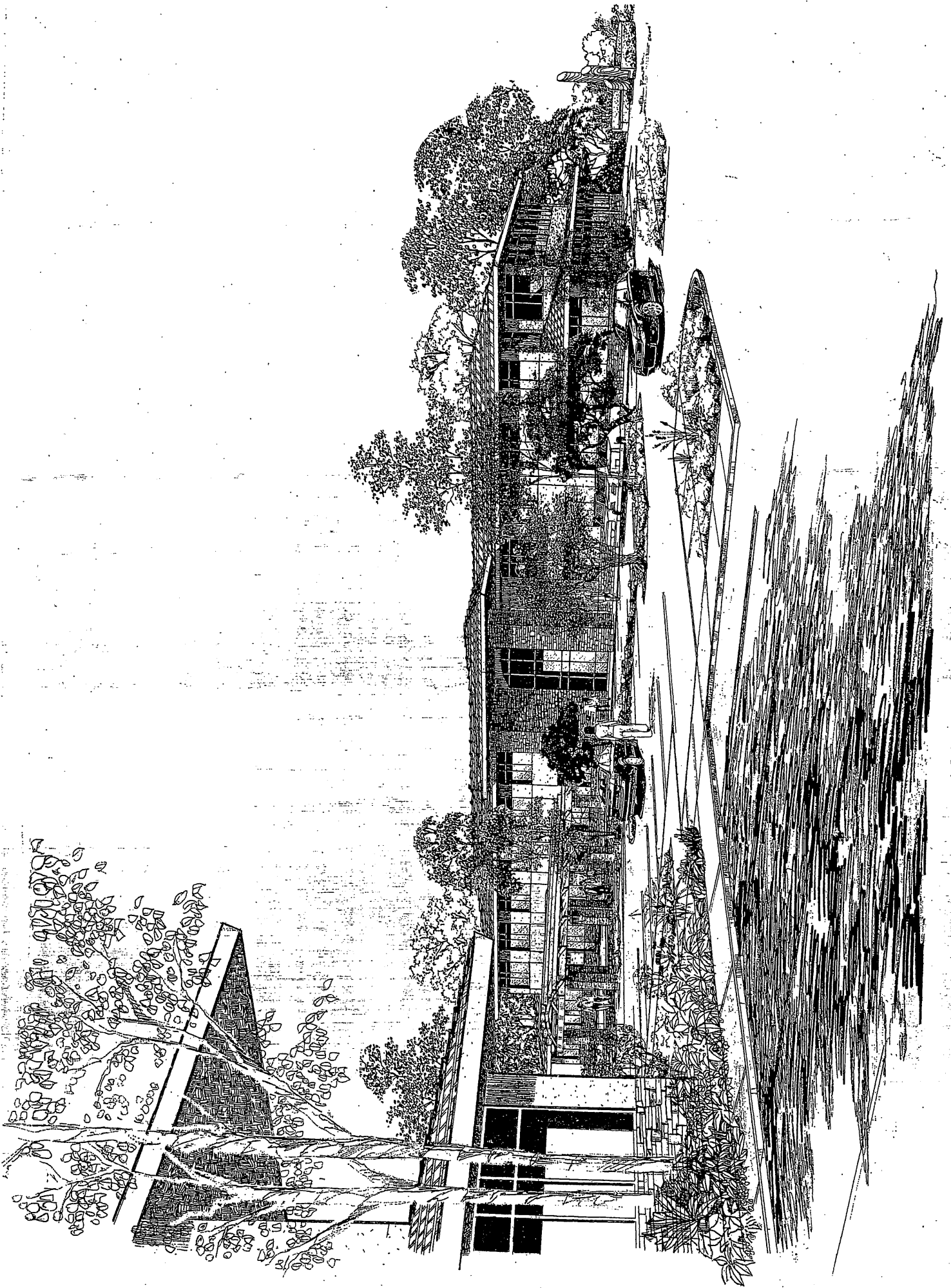




AGOURA HILLS CORPORATE POINT
30200-30300 AGOURA ROAD
AGOURA HILLS, CALIFORNIA

ARCHITECT: HENEY DONG & ASSOCIATES





AGOURA HILLS CORPORATE POINT
30200-30300, AGOURA ROAD
AGOURA HILLS, CALIFORNIA

ARCHITECT: HENEY, DONG & ASSOCIATES