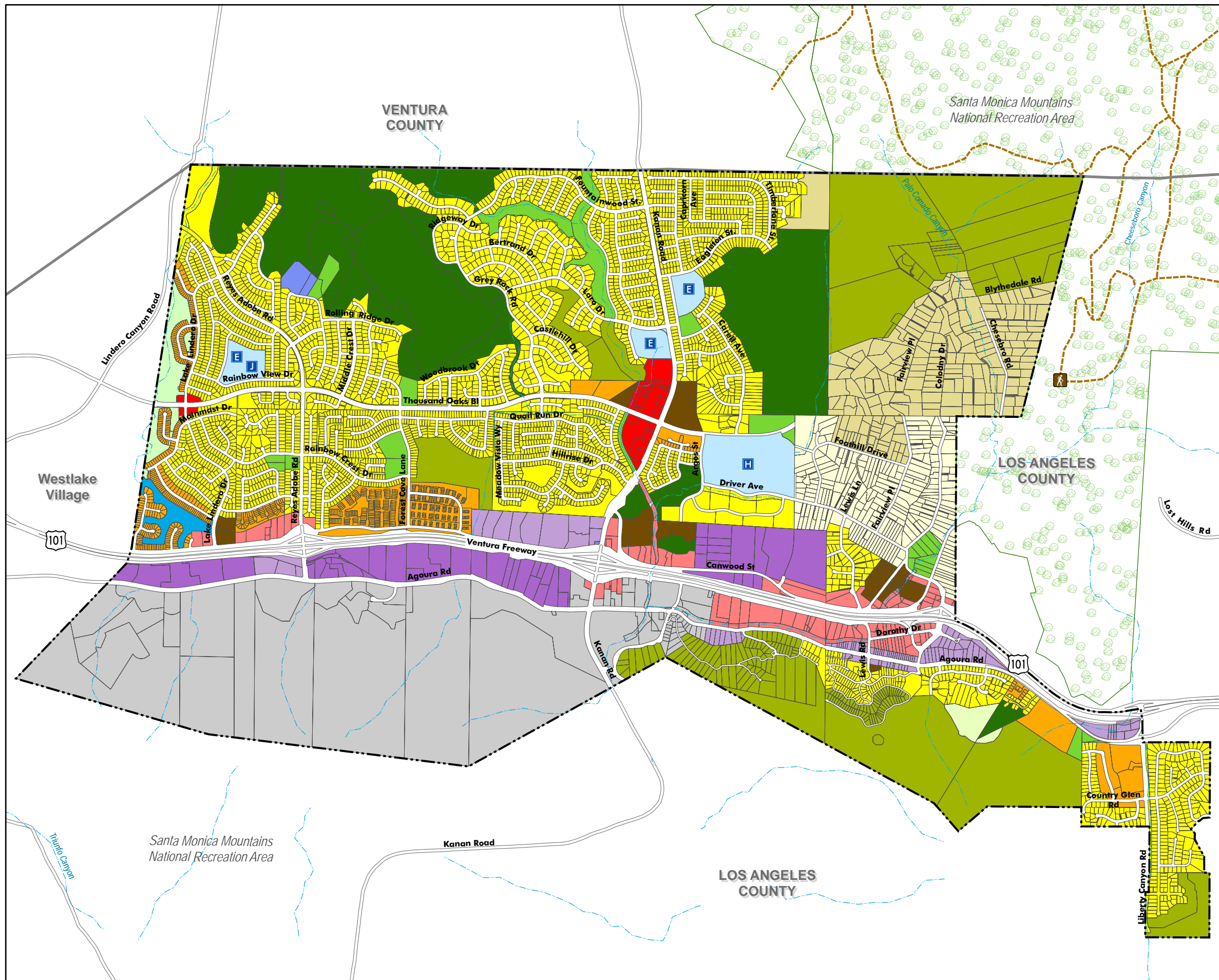


CITY OF  
**AGOURA HILLS**  
**Zoning Map**



**Zoning Designations**

- Rural Residential (RR)
- Very Low-Residential (<2du/ac.) (RV)
- Low Density-Residential (1-2 du/ac.) (RL)
- Single Family-Residential (2-6 du/ac.) (RS)
- Medium Density Residential (6-15 du/ac.) (RM)
- High Density-Residential (15-25 du/ac.) (RH)
- Commercial Shopping Center (CS)
- Commercial Retail/Service (CRS)
- Commercial Recreational (CR)
- Business Park Office Retail (BP-OR)
- Business Park-Manufacturing (BP-M)
- School (SH)
- Open Water (OW)
- Utility (U)
- Local Park (P)
- Restricted Open Space (OS-R)
- Open Space Restricted/Deed Restricted (OS-R/DR)
- Specific Plan (SP)

**Base Map Features**

- County Boundary
- City Boundary
- Water Courses
- Santa Monica Mountains National Recreation Area
- Trails and Fire Roads
- Trail Head/Parking
- Schools