

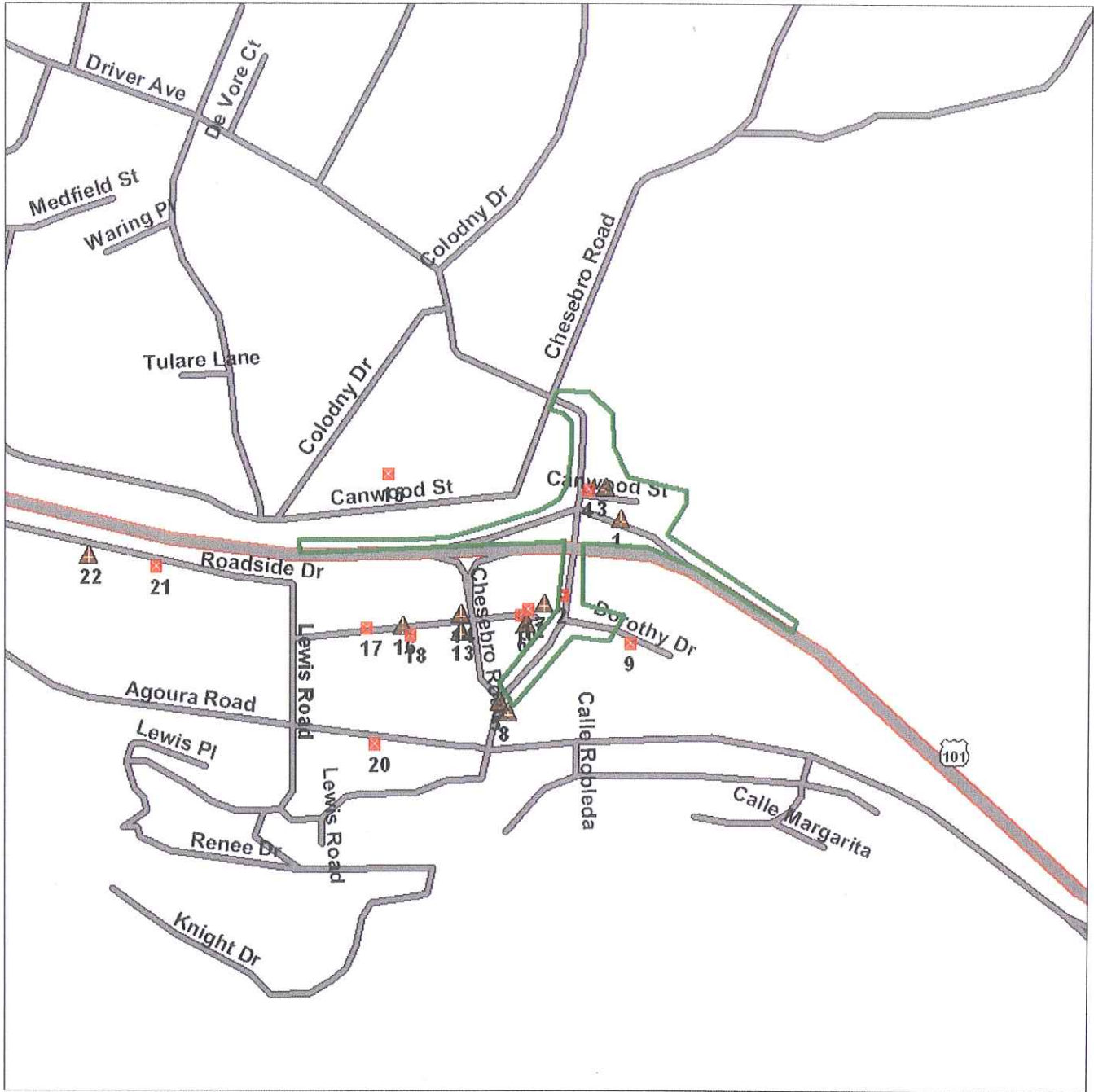


Environmental FirstSearch

.25 Mile Radius from Area
AAI: RCRA GEN, UST, PERMITS, OTHER



5325 CHESEBRO ROAD, AGOURA HILLS CA 91301



Source: U.S. Census TIGER Files

- Area Polygon
- Identified Site, Multiple Sites, Receptor
- NPL, DELNPL, Brownfield, Solid Waste Landfill (SWL), Hazardous Waste
- Triballand
- Railroads



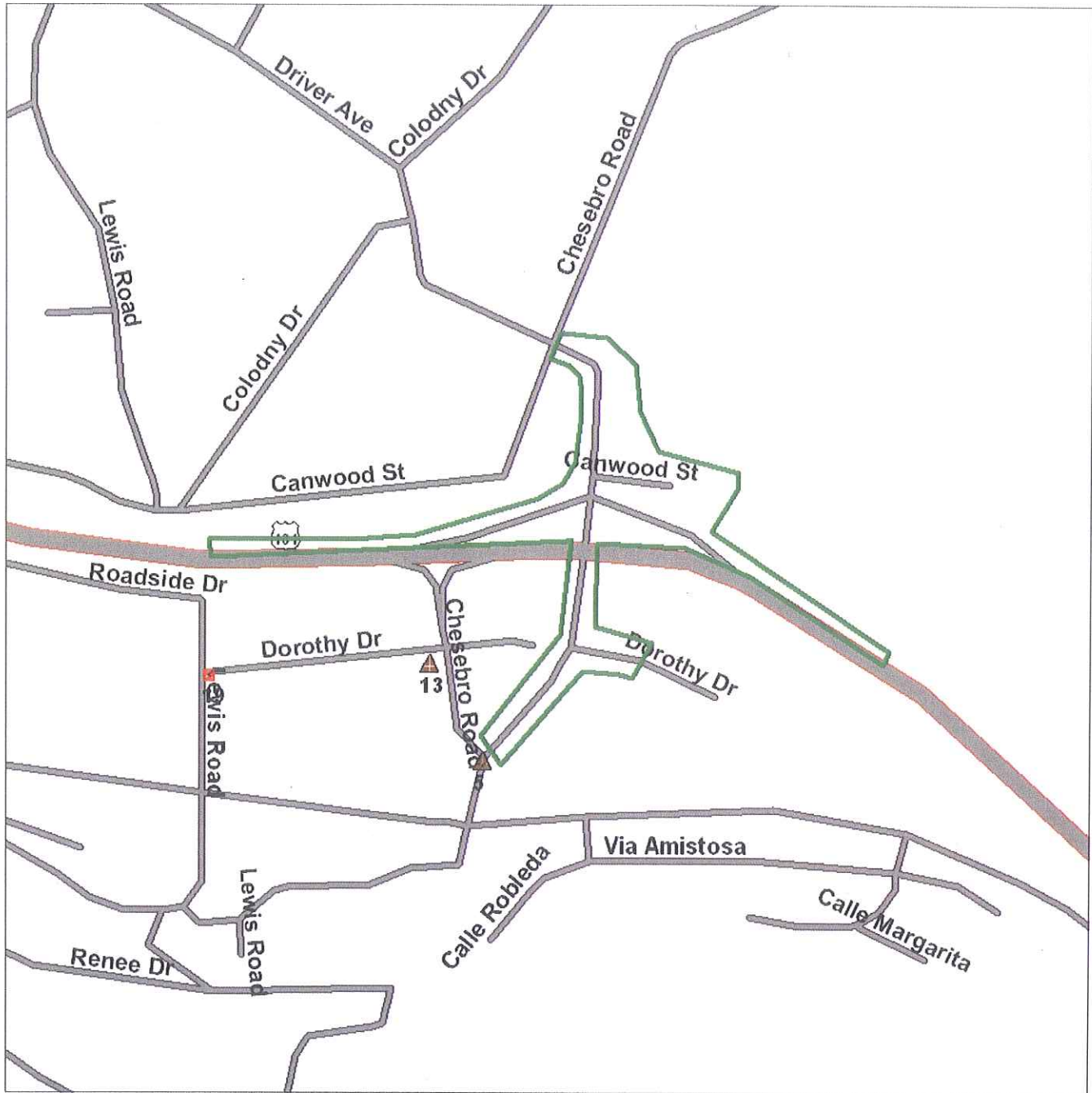


Environmental FirstSearch

.12 Mile Radius from Area
AAI: SPILLS90, ERNS, RCRANLR, FIMAP



5325 CHESEBRO ROAD, AGOURA HILLS CA 91301



Source: U.S. Census TIGER Files

Area Polygon	
Identified Site, Multiple Sites, Receptor	
NPL, DELNPL, Brownfield, Solid Waste Landfill (SWL), Hazardous Waste	
Triballand	
Railroads	

Appendix D
Historical Aerial Photo Report

Dear Valued Customer,

Thank you for ordering this historical aerial collection prepared by Track Info Services, a partner of the Environmental FirstSearch Network. As you can see, we are introducing an improved format for our aerials. Here are some of the features we have added to help you better utilize the photos.

- **Scale:** with an approximate scale of the cropped photo image.
- **Focused Coverage Area:** a ¼ mile radius around the subject site is covered, so you may view the specified target site and adjacent properties.
- **PDF Format:** pdf is now our default format, so you may easily integrate the photos with other documents. This also enables you to easily zoom in or out on your desktop's pdf viewer.
- **Single File for all Photos:** our photos now come as a single pdf file instead of multiple jpeg files, so everything may be downloaded all together as one file.

Notes:

1. *The scale located below the photograph, can be used to approximate distances on the image when it has been printed at 100% on an 8.5 x 11 letter sized paper. The approximate scale of the image should not be confused with the original photo scale also listed. The original photo scale is the average scale of the unedited photographs over the entire flight and is provided by the company that performed the flight.*
2. *The subject site location is based on the coordinates provided by requestor through the Environmental FirstSearch software or on an order form.*
3. *You may still request up to a 1 mile coverage area or jpeg format by simply noting your request in the "special instructions" box within the "Additional Services / Aerials" tab of the Environmental FirstSearch software.*

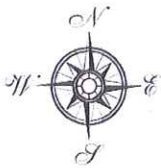
If you have any further questions please contact Track Info Services by email at services@trackinfoservices.com or call us at (866) 664-9981.

Track Info Services, LLC

Historical Aerial Photo

Site: 5325 Chesebro Road, Agoura Hills, CA 91301

Photo Year: 2002



Job Number: 6469285001

Original Scale of Photo: 1:40,000

Approximate Scale of This Image: 1 in equals 375 ft

Coverage Area Approximately 1/4 Mile Radius From Subject Site

 ≈ 375 ft

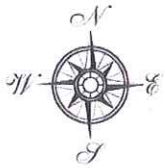
Copyright: Track Info Services, LLC

Track Info Services, LLC

Historical Aerial Photo

Site: 5325 Chesebro Road, Agoura Hills, CA 91301

Photo Year: 1994



Job Number: 6469285001

Original Scale of Photo: 1:40,000

Approximate Scale of This Image: 1 in equals 375 ft

Coverage Area Approximately 1/4 Mile Radius From Subject Site

 ≈ 375 ft

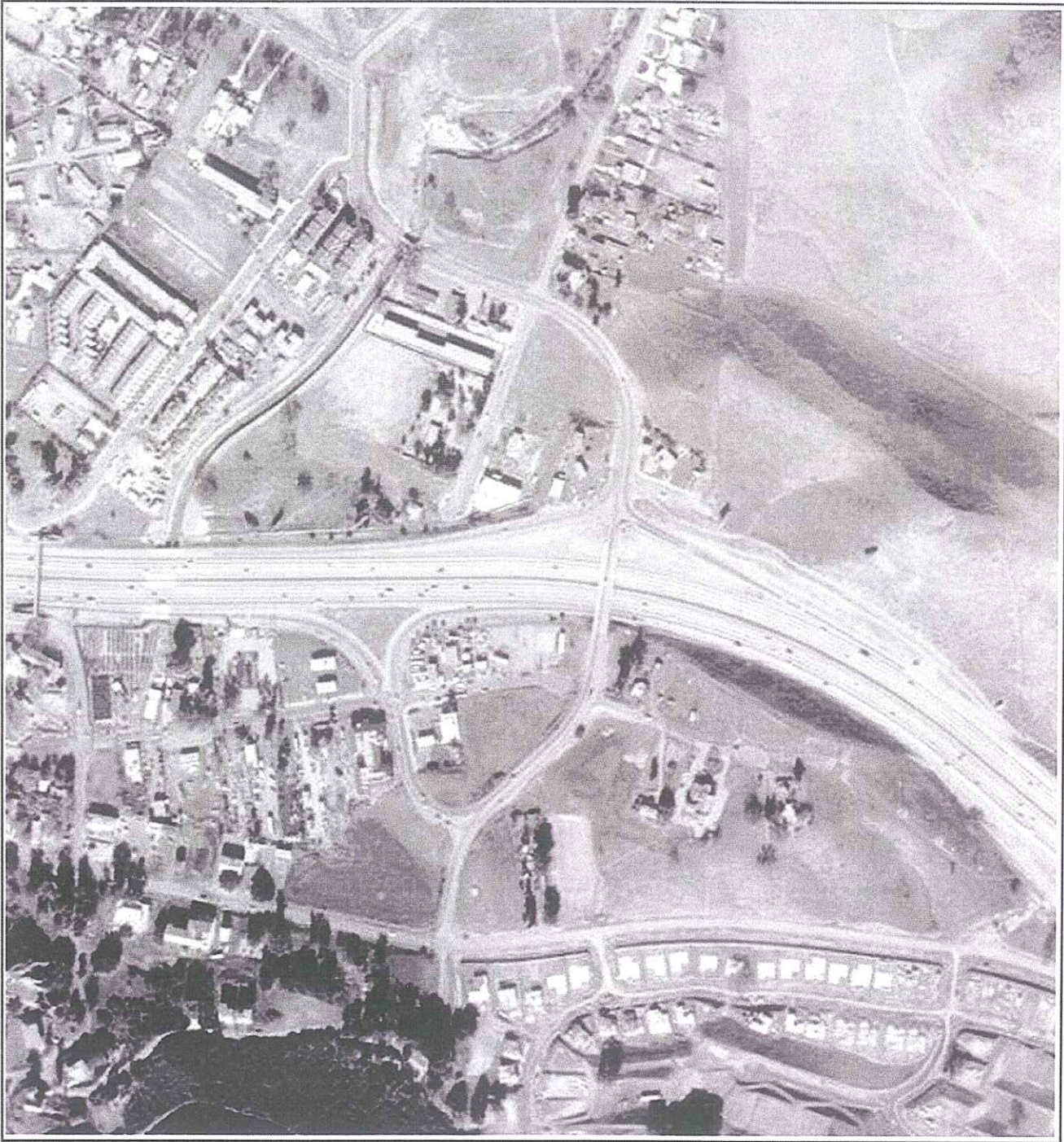
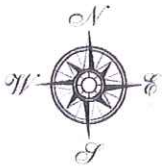
Copyright: Track Info Services, LLC

Track Info Services, LLC

Historical Aerial Photo

Site: 5325 Chesebro Road, Agoura Hills, CA 91301

Photo Year: 1981



Job Number: 6469285001

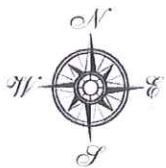
Original Scale of Photo: 1:36,000

Approximate Scale of This Image: 1 in equals 375 ft

Coverage Area Approximately 1/4 Mile Radius From Subject Site



Copyright: Track Info Services, LLC



Track Info Services, LLC

Historical Aerial Photo

Site: 5325 Chesebro Road, Agoura Hills, CA 91301

Photo Year: 1970



Job Number: 6469285001

Original Scale of Photo: 1:12,000

Approximate Scale of This Image: 1 in equals 375 ft

Coverage Area Approximately 1/4 Mile Radius From Subject Site



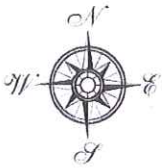
Copyright: Track Info Services, LLC

Track Info Services, LLC

Historical Aerial Photo

Site: 5325 Chesebro Road, Agoura Hills, CA 91301

Photo Year: 1961



Job Number: 6469285001

Original Scale of Photo: 1:16,000

Approximate Scale of This Image: 1 in equals 375 ft

Coverage Area Approximately 1/4 Mile Radius From Subject Site

≈ 375 ft

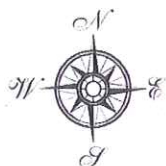
Copyright: Track Info Services, LLC

Track Info Services, LLC

Historical Aerial Photo

Site: 5325 Chesebro Road, Agoura Hills, CA 91301

Photo Year: 1953



Job Number: 6469285001

Original Scale of Photo: 1:20,000

Approximate Scale of This Image: 1 in equals 375 ft

Coverage Area Approximately 1/4 Mile Radius From Subject Site



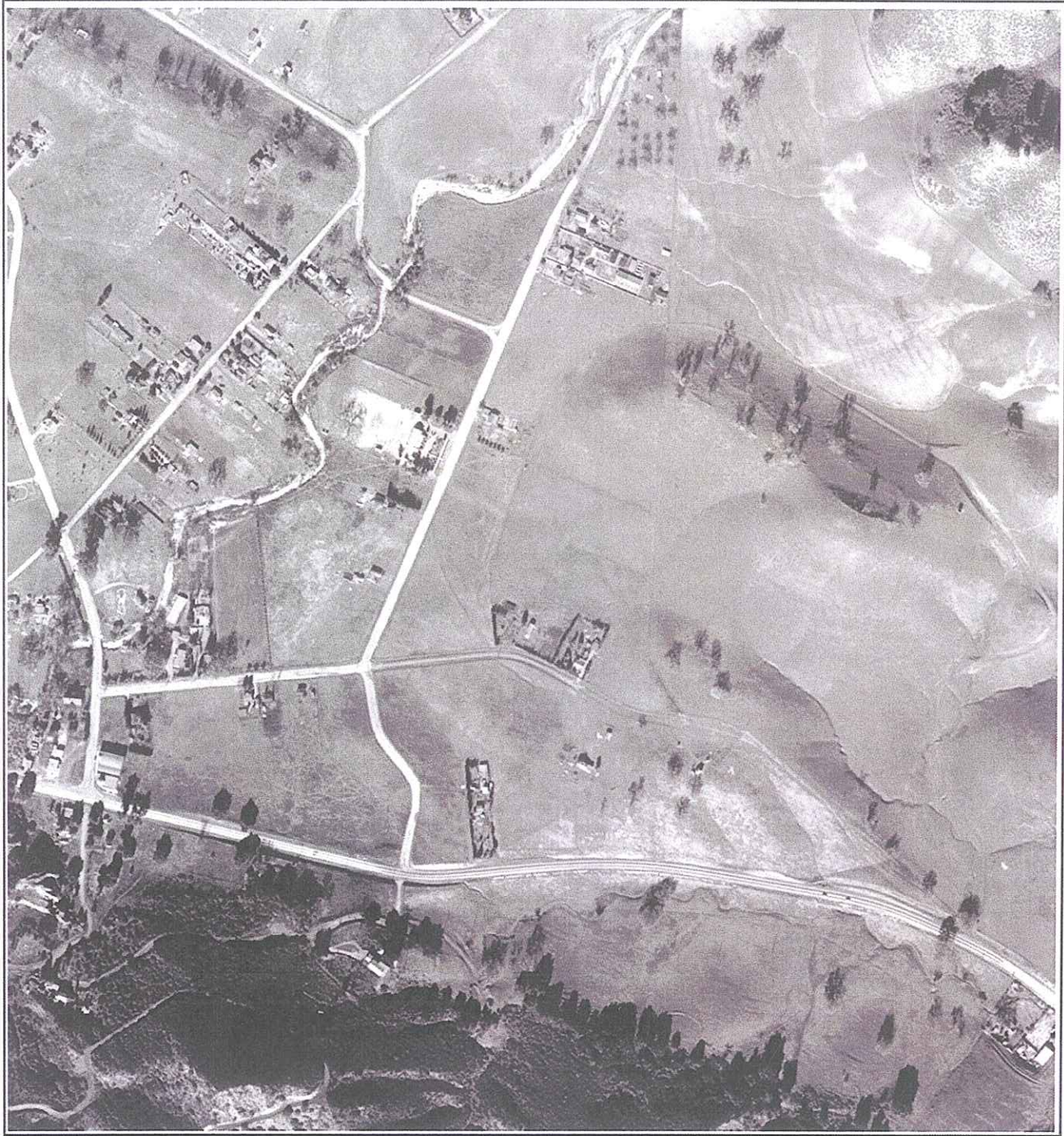
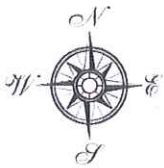
Copyright: Track Info Services, LLC

Track Info Services, LLC

Historical Aerial Photo

Site: 5325 Chesebro Road, Agoura Hills, CA 91301

Photo Year: 1944



Job Number: 6469285001

Original Scale of Photo: 1:12,000

Approximate Scale of This Image: 1 in equals 375 ft

Coverage Area Approximately 1/4 Mile Radius From Subject Site



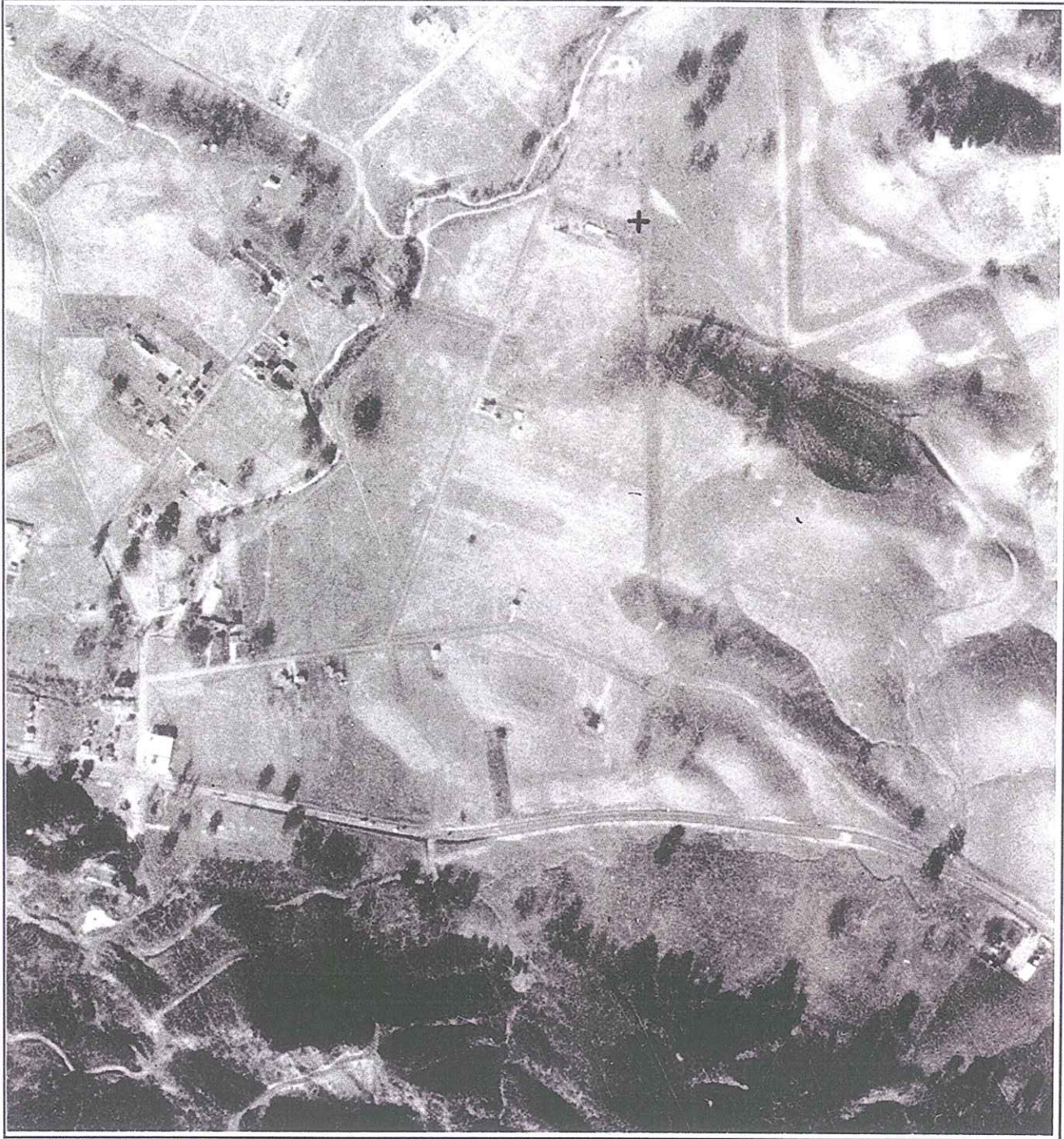
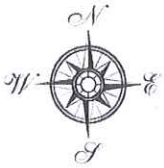
Copyright: Track Info Services, LLC

Track Info Services, LLC

Historical Aerial Photo

Site: 5325 Chesebro Road, Agoura Hills, CA 91301

Photo Year: 1928



Job Number: 6469285001

Original Scale of Photo: 1:18,000

Approximate Scale of This Image: 1 in equals 375 ft

Coverage Area Approximately 1/4 Mile Radius From Subject Site



Copyright: Track Info Services, LLC

Appendix E
Historical Topographic Map Report

Dear Valued Customer,

Thank you for ordering this historical topographic map collection prepared by Track Info Services, a partner of the Environmental FirstSearch Network. As you can see, we are introducing an improved format for our topographic maps. Here are some of the features we have added to help you better utilize the maps.

- **Scale Bar:** with an approximate scale of the map provided after it is cropped from the original quadrangle.
- **Map Legend:** with USGS topographic quadrangle symbols.
- **Coverage Area:** approximate 1.25 mile radius with an outlining 1 mile radius marker.
- **PDF Format:** pdf is now our default format, so you may easily integrate the maps with other documents. This also enables you to easily zoom in or out on your desktop's pdf viewer.
- **Single File for All Maps:** our maps now come as a single pdf file instead of multiple jpeg files, so everything may be downloaded all together as one file.

Notes:

1. This scale bar can be used to approximate distances on the image when it has been printed at 100% on an 8.5 x 11 letter sized paper.
2. The subject site location is based on the coordinates provided by requestor through the Environmental FirstSearch software or an order form.
3. You may still request to expand the coverage area or jpeg format by simply noting your request in the "special instructions" box in the "Additional Services / Historical Topo Maps" of the Environmental FirstSearch software.

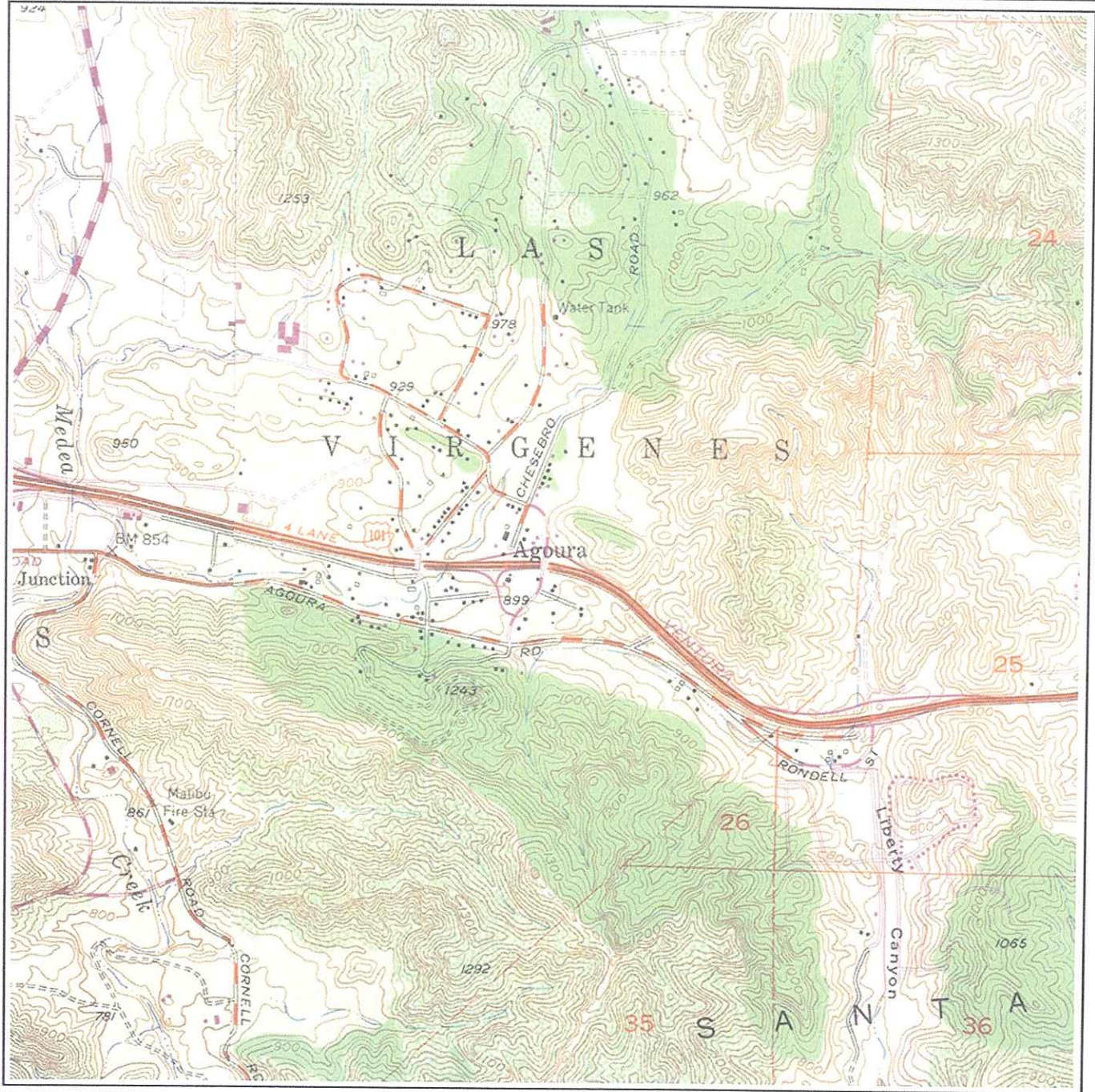
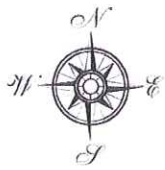
If you have any further questions please contact Track Info Services by email at services@trackinfoservices.com or call us at (866) 664-9981.

Track Info Services, LLC

Historical Topographic Map

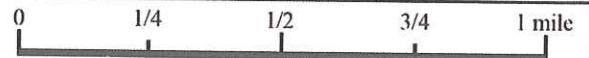
Site: 5325 Chesebro Road, Agoura Hills, CA 91301

Quadrangle Year: 1967



- Building
- Topo Contour
- Depression
- Quarry or Open Pit Mine

- Railroad
- Tanks
- Primary Highway
- Trail



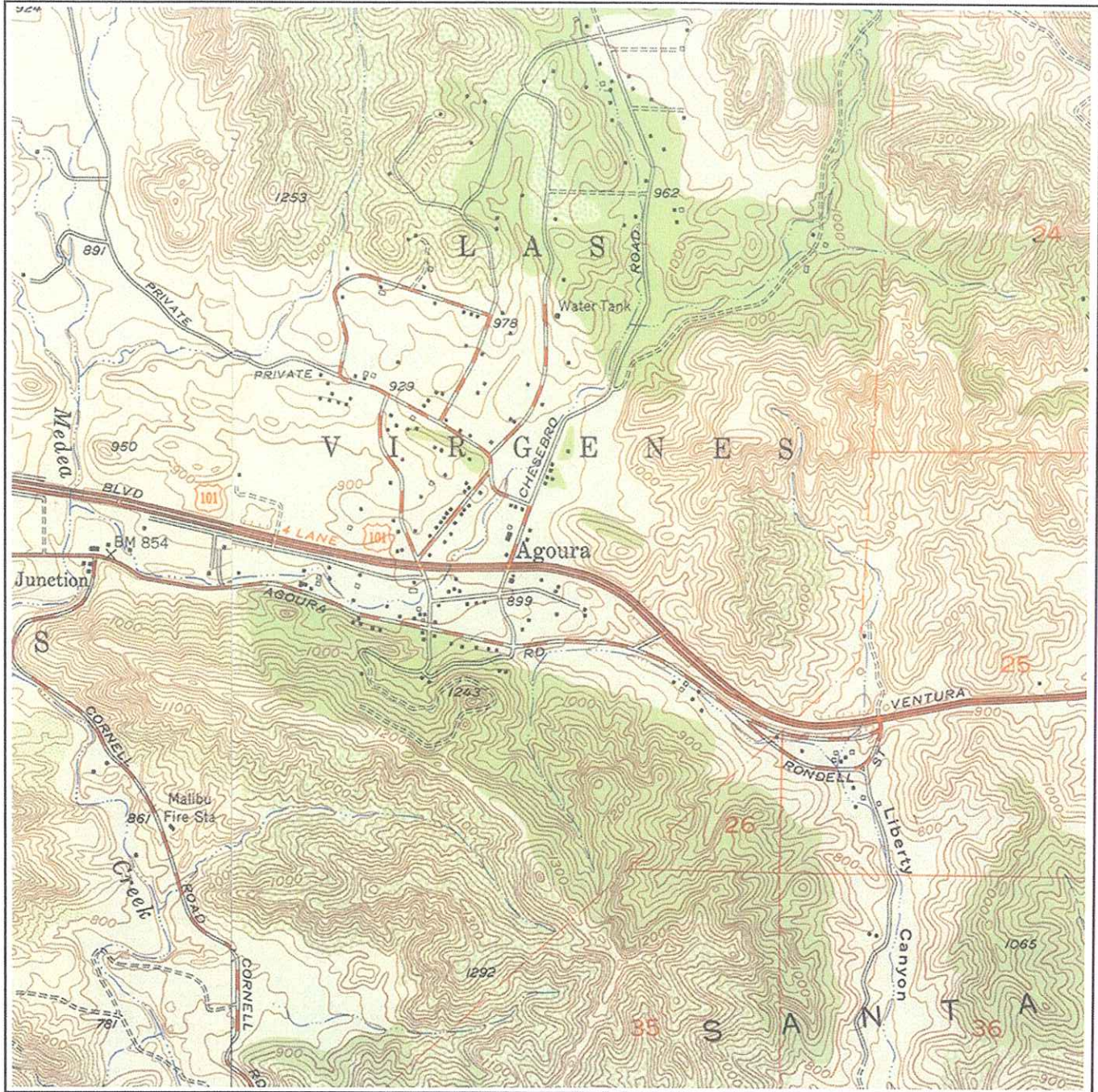
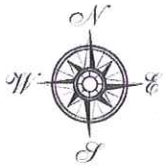
Job Number: 6469285001
 Original Scale of Full Topo: 1:24,000
 Quadrangle Name: Calabasas, CA
 (West: Thousand Oaks, CA, 1967)

Track Info Services, LLC

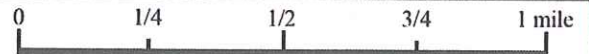
Historical Topographic Map

Site: 5325 Chesebro Road, Agoura Hills, CA 91301

Quadrangle Year: 1952



- | | | | |
|-------------------------|-----------|-----------------|-----------|
| Building | ■ ■ ■ ■ ■ | Railroad | —+—+—+— |
| Topo Contour | —6000— | Tanks | ● ● ● ● |
| Depression | ⊖ | Primary Highway | — |
| Quarry or Open Pit Mine | × | Trail | - - - - - |



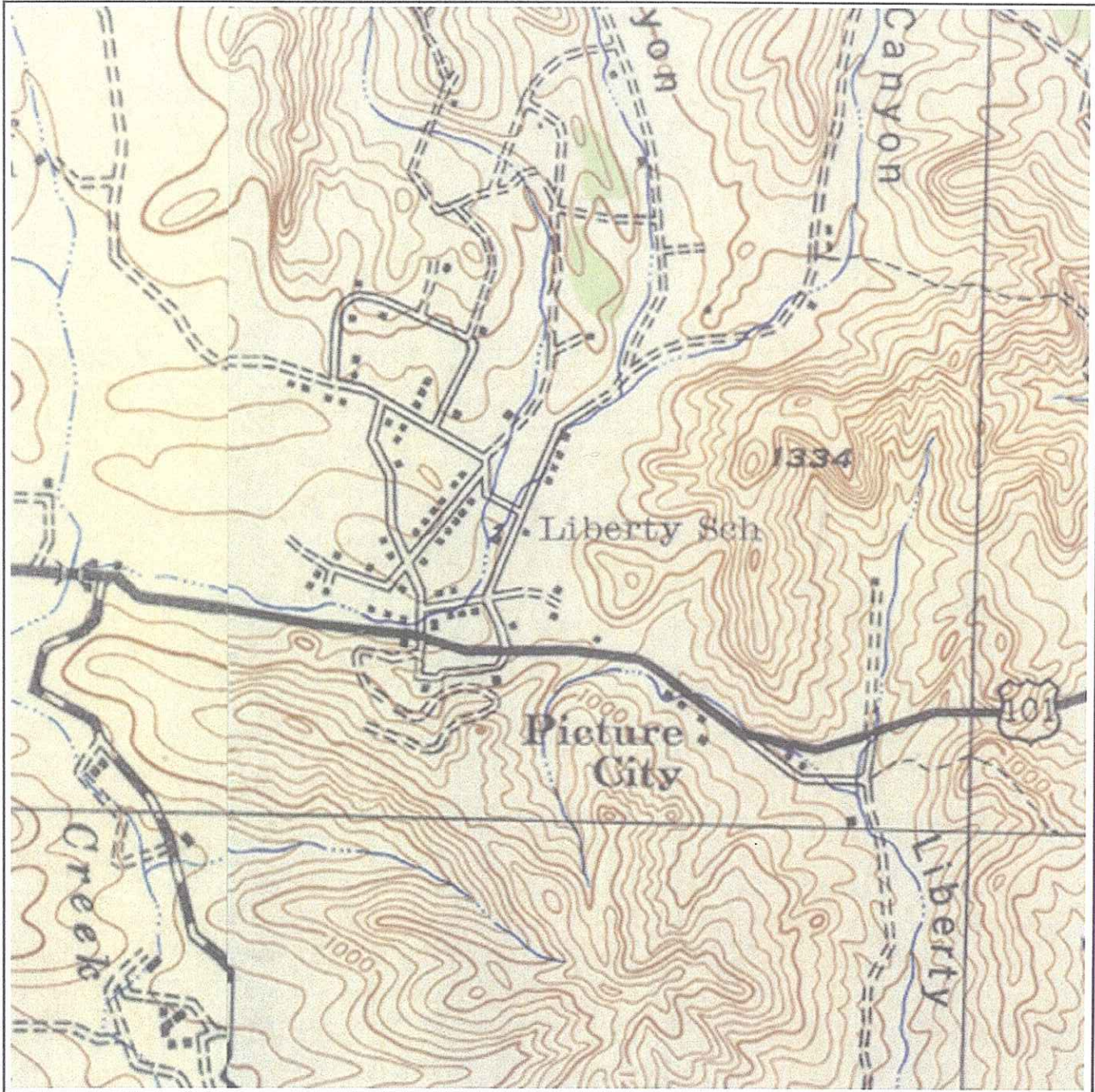
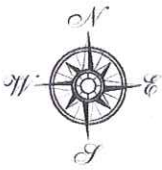
Job Number: 6469285001
Original Scale of Full Topo: 1:24,000
Quadrangle Name: Calabasas, CA
(West: Thousand Oaks, CA, 1952)

Track Info Services, LLC

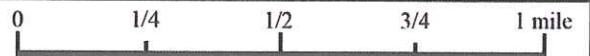
Historical Topographic Map

Site: 5325 Chesebro Road, Agoura Hills, CA 91301

Quadrangle Year: 1944



- | | | | |
|-------------------------|--|-----------------|--|
| Building | | Railroad | |
| Topo Contour | | Tanks | |
| Depression | | Primary Highway | |
| Quarry or Open Pit Mine | | Trail | |



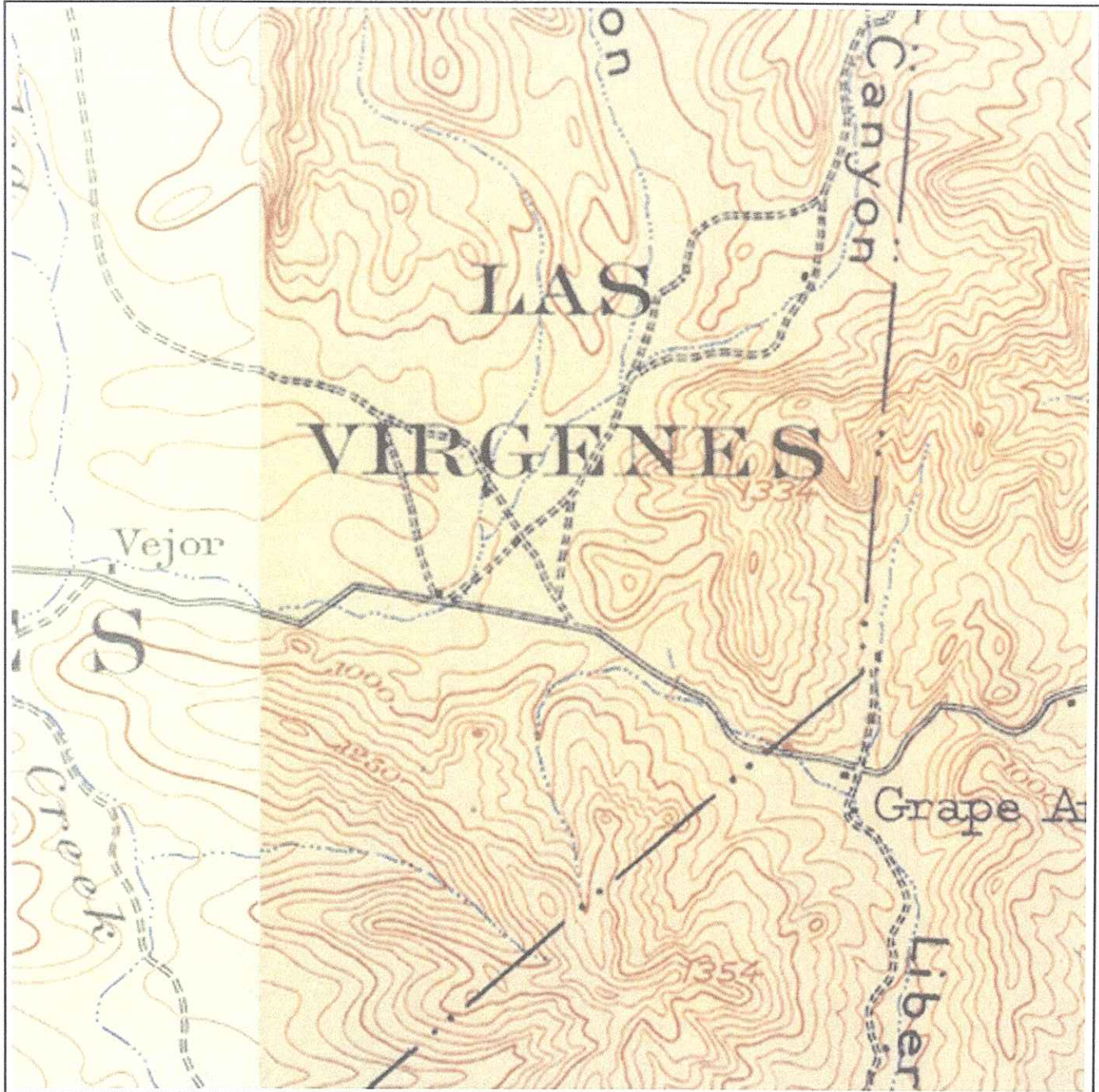
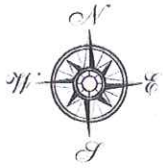
Job Number: 6469285001
Original Scale of Full Topo: 1:62,500
Quadrangle Name: Calabasas, CA
(West: Triunfo Pass, CA, 1943)

Track Info Services, LLC

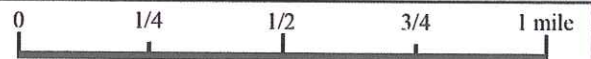
Historical Topographic Map

Site: 5325 Chesebro Road, Agoura Hills, CA 91301

Quadrangle Year: 1903



Building		Railroad	
Topo Contour		Tanks	
Depression		Primary Highway	
Quarry or Open Pit Mine		Trail	



Job Number: 6469285001
Original Scale of Full Topo: 1:62,500
Quadrangle Name: Calabasas, CA
(West: Triunfo Pass, CA, 1900)

Appendix F
Sanborn® Fire Insurance Map Report



HISTORICAL FIRE INSURANCE MAPS

NO MAPS AVAILABLE

06-13-08

6469285001

**5325 CHESEBRO ROAD
AGOURA HILLS CA 91301**

A search of FirstSearch Technology Corporation's proprietary database of historical fire insurance map availability confirmed that there are NO MAPS AVAILABLE for the Subject Location as shown above.

FirstSearch Technology Corporation's proprietary database of historical fire insurance map availability represents abstracted information from the Sanborn® Map Company obtained through online access to the U.S. Library of Congress via local libraries.

Copyright Policy & Disclaimer

Certain Sanborn® Fire Insurance Maps are copyrighted material and may not be reproduced without the expressed permission of the Sanborn Map Company. FirstSearch Technology Corporation warrants that it will employ its best efforts to maintain and deliver its information in an efficient and timely manner. Customer acknowledges that it understands that FirstSearch Technology Corporation obtains the above information from sources FirstSearch Technology Corporation considers reliable. However, **THE WARRANTIES EXPRESSED HEREIN ARE IN LIEU OF ALL OTHER WARRANTIES**, either expressed or implied, including without limitation any implied warranty of merchantability or fitness or suitability for a particular purpose (whether or not FirstSearch Technology Corporation may know, have reason to know, or have been advised of such purpose), whether arising by law or by reason of industry custom or usage. **ALL SUCH OTHER WARRANTIES ARE HEREBY EXPRESSLY DISCLAIMED.**

**Environmental FirstSearch
Search Summary Report**

**Target Site: 5325 CHESEBRO ROAD
AGOURA HILLS CA 91301**

FirstSearch Summary

Database	Sel	Updated	Radius	Site	1/8	1/4	1/2	1/2>	ZIP	TOTALS
NPL	Y	04-07-08	1.00	0	0	0	0	0	0	0
NPL Delisted	Y	04-07-08	0.50	0	0	0	0	-	0	0
CERCLIS	Y	04-22-08	0.50	0	0	0	0	-	0	0
NFRAP	Y	04-22-08	0.50	0	0	0	0	-	0	0
RCRA COR ACT	Y	04-01-08	1.00	0	0	0	0	0	0	0
RCRA TSD	Y	04-01-08	0.50	0	0	0	0	-	0	0
RCRA GEN	Y	04-01-08	0.25	0	3	0	-	-	1	4
RCRA NLR	Y	04-01-08	0.12	0	2	-	-	-	0	2
Federal IC / EC	Y	04-01-08	0.50	0	0	0	0	-	0	0
ERNS	Y	04-22-08	0.12	0	1	-	-	-	1	2
Tribal Lands	Y	12-01-05	1.00	0	0	0	0	0	0	0
State/Tribal Sites	Y	08-08-07	1.00	0	0	0	0	0	0	0
State Spills 90	Y	11-06-07	0.12	0	0	-	-	-	0	0
State/Tribal SWL	Y	04-09-08	0.50	0	0	0	0	-	0	0
State/Tribal LUST	Y	04-11-08	0.50	0	2	1	1	-	1	5
State/Tribal UST/AST	Y	01-03-07	0.25	4	6	0	-	-	0	10
State/Tribal EC	Y	NA	0.50	0	0	0	0	-	0	0
State/Tribal IC	Y	04-27-07	0.25	0	0	0	-	-	0	0
State/Tribal VCP	Y	08-15-06	0.50	0	0	0	0	-	0	0
State/Tribal Brownfields	Y	08-08-07	0.50	0	0	0	0	-	0	0
State Permits	Y	04-16-08	0.25	2	10	4	-	-	2	18
State Other	Y	08-08-07	0.25	0	0	0	-	-	0	0
FI Map Coverage	Y	04-14-08	0.12	0	0	-	-	-	0	0
- TOTALS -				6	24	5	1	0	5	41

Notice of Disclaimer

Due to the limitations, constraints, inaccuracies and incompleteness of government information and computer mapping data currently available to TRACK Info Services, certain conventions have been utilized in preparing the locations of all federal, state and local agency sites residing in TRACK Info Services's databases. All EPA NPL and state landfill sites are depicted by a rectangle approximating their location and size. The boundaries of the rectangles represent the eastern and western most longitudes; the northern and southern most latitudes. As such, the mapped areas may exceed the actual areas and do not represent the actual boundaries of these properties. All other sites are depicted by a point representing their approximate address location and make no attempt to represent the actual areas of the associated property. Actual boundaries and locations of individual properties can be found in the files residing at the agency responsible for such information.

Waiver of Liability

Although TRACK Info Services uses its best efforts to research the actual location of each site, TRACK Info Services does not and can not warrant the accuracy of these sites with regard to exact location and size. All authorized users of TRACK Info Services's services proceeding are signifying an understanding of TRACK Info Services's searching and mapping conventions, and agree to waive any and all liability claims associated with search and map results showing incomplete and or inaccurate site locations.