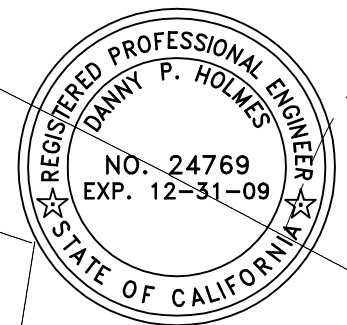
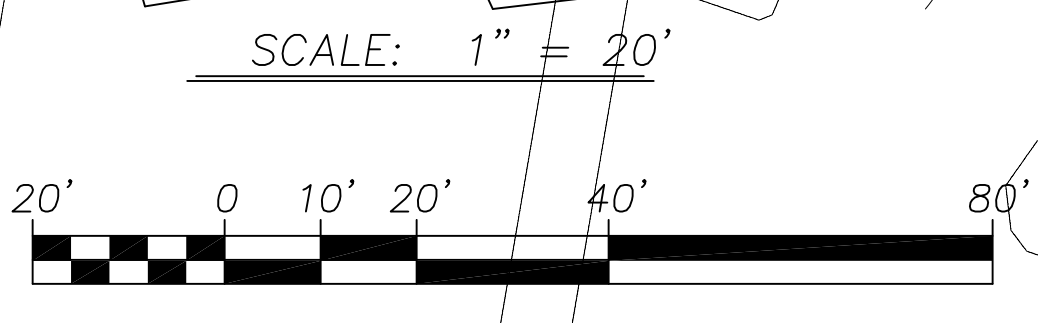


- LEGEND**
- 1 30"x30" CATCH BASIN
 - 2 24"x24" CONC. CATCH BASIN W/ "FLOGARD" BIO FILTER
 - 3 8" PVC STORM DRAIN
 - 4 12" PVC STORM DRAIN
 - 5 15" RCP STORM DRAIN
 - 6 30" CENTERLINE RADIUS
 - 7 DETENTION BASIN
 - 8 TRASH ENCLOSURE
 - 9 12"x12" CATCH BASIN W/ 2" CONC. SURROUND
 - 10 4" PVC DRAIN THRU CURB
 - 11 6" CURB W/ 18" CONC. GUTTER
 - 12 36" WIDE CONCRETE GUTTER PER APWA STD PLATE 122-1
 - 13 CURB OPENING CATCH BASIN PER APWA STD PLATE 300-2 (W=6', V=3'-2")
 - 14 CONSTRUCT 5'x5' JUNCTION STRUCTURE PER APWA STD PLATE 335-1
 - 15 3' HIGH WALL FOR FIRST 3' FROM PROPERTY LINE
 - 16 24"x24" CATCH BASIN
 - 17 6" PVC STORM DRAIN
 - 18 6" RISERS/14" TREADS
 - 19 12"x12" CATCH BASIN W/4" DRAIN THRU CURB
 - 20 12"x12" CATCH BASIN W/6" DRAIN
 - 21 TREE WELL
 - 22 5" STAMPED CONCRETE OVER 6" OF 3/4" AGG. BASE
 - 23 3" ASPHALT OVER 9" OF 3" AGG. BASE TO BE CONFIRMED BY SOILS ENGINEER & RESULTS OF EXPANSION INDEX(T.I. 5)
 - 24 4" CONCRETE SIDEWALK OVER 2" SAND. PER STD PLAN 107 SHOWN ON SHEET 5.



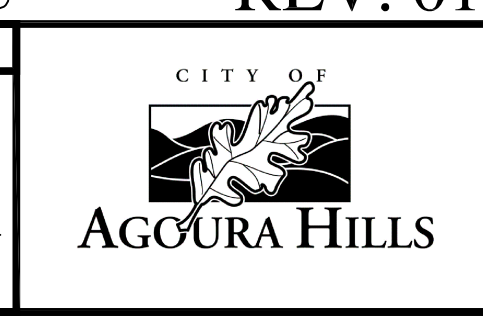
ASSESSOR'S PARCEL NO. 2053-01-8 REV. 01-26-09 05 - C. U. P. - 006 & 05 - O T P - 032

REVISION #	SYMBOL	DESCRIPTION OF CHANGE	APPROVED	DATE

PREPARED BY: **Holmes Enterprises**
Structural and Civil Engineering
200 Wicks Rd. Moorpark, CA. 93021
(805) 532-1571 fax: (805) 532-1596

PROJECT ENGINEER: **DANNY P. HOLMES** RCE 24769 EXP. 12-31-2008

REVIEWED BY	DATE	REVIEWED BY	DATE
RAMIRO ADEVA III CITY ENGINEER			

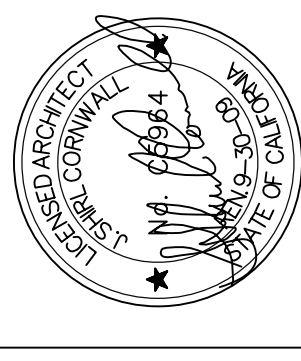


OVERVIEW PLAN
CANWOOD STREET OFFICES
29541 AND 29555 CANWOOD STREET
AGOURA HILLS CALIFORNIA

SHEET 3 OF 5

Intentionally blank page behind Civil Overview Plan (sheet 3 of 5)

Revisions	
1	PLANNING DEPT. REV. 7-4-06 UEG
2	PLANNING DEPT. REV. 9-25-06 UEG
3	PLANNING DEPT. REV. 2-17-07 UEG
4	PLANNING DEPT. REV. 9-21-07 UEG



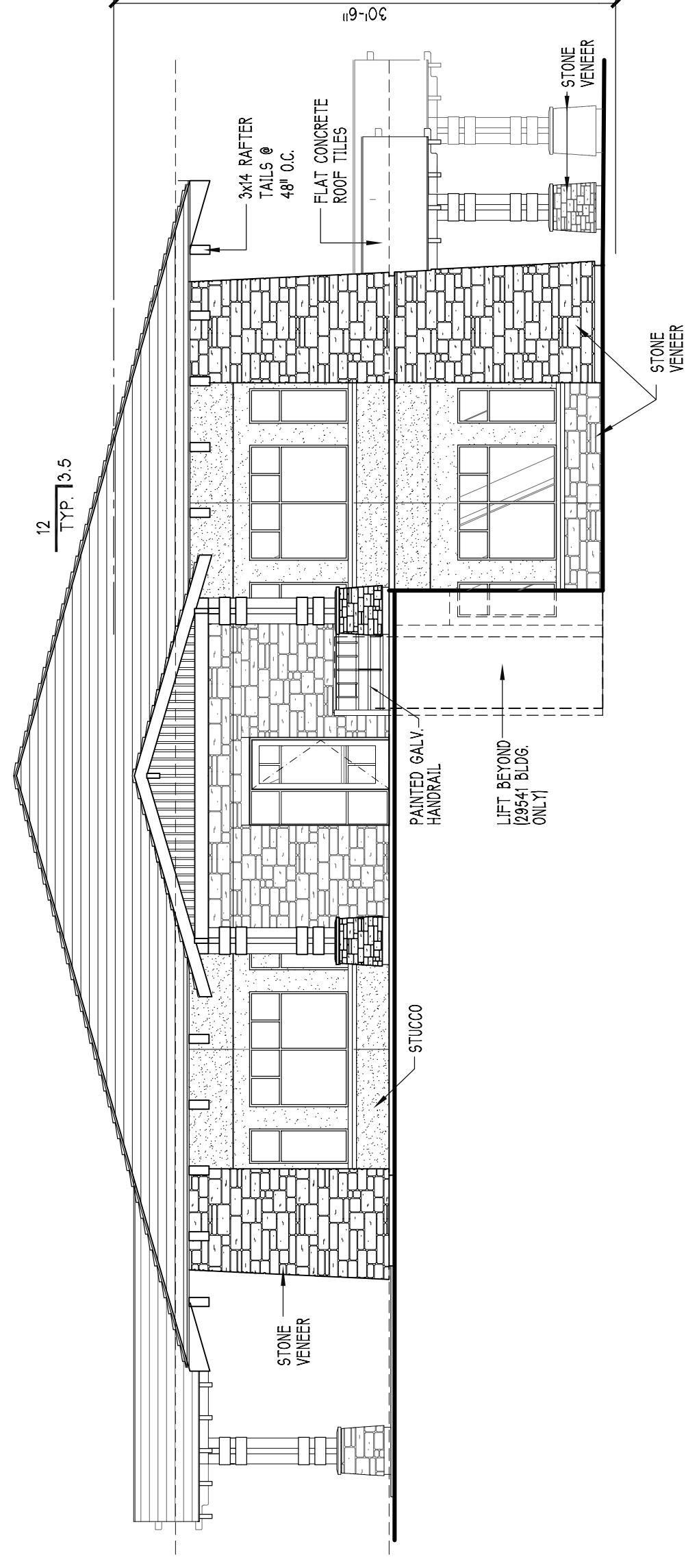
THE WREN GROUP, INC.
 Architecture & Interiors
 44 West Bellevue Drive Suite 6 Pasadena, California 91105 Phone: 626.564.2539 Fax: 626.564.2534

PROPOSED BUILDING:
CANWOOD
 29541 AND 29555 CANWOOD STREET AGOURA HILLS, CA 91301-1558

Date 10-04-05
 Drawn UEG/MP
 Checked
 Job 718.101

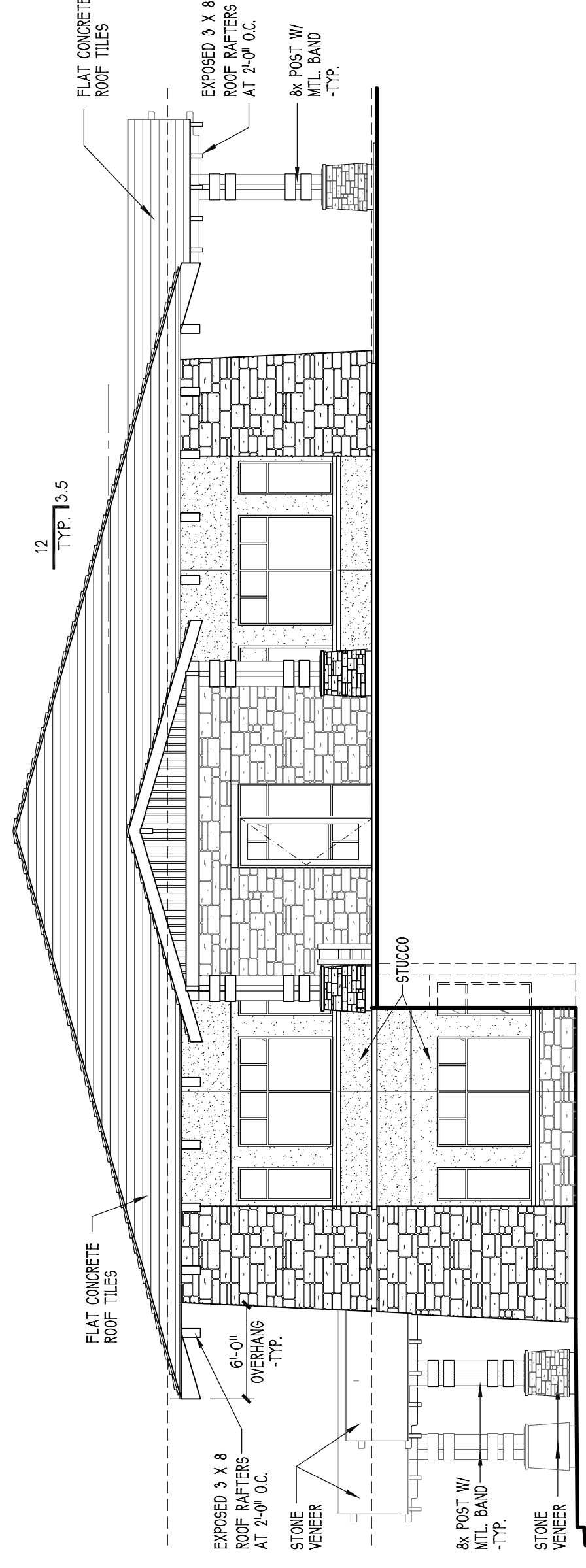
Sheet **A-3**

EXTERIOR ELEVATIONS



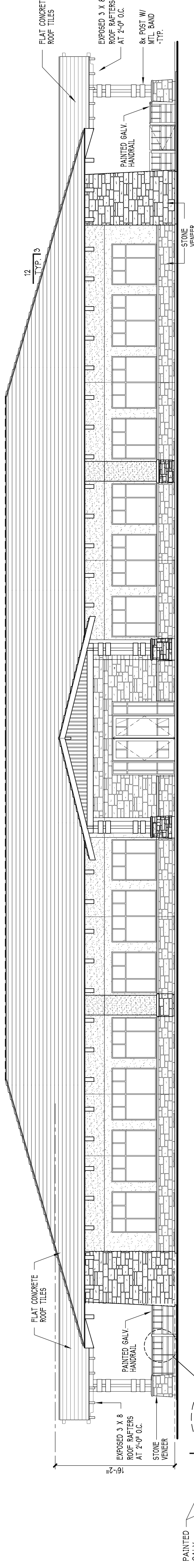
3 EAST ELEVATION

SCALE: 1/4" = 1'-0"



4 WEST ELEVATION

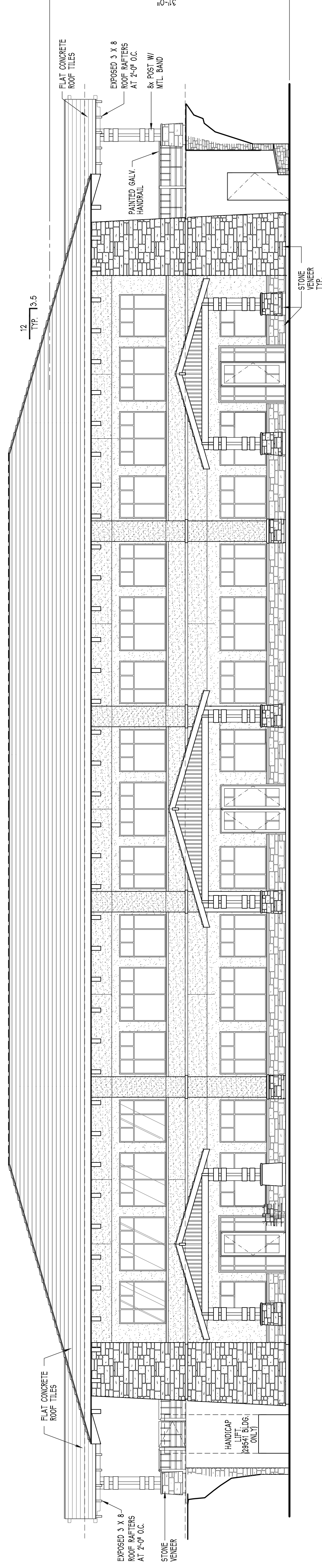
SCALE: 1/4" = 1'-0"



2 NORTH ELEVATION

SCALE: 1/8" = 1'-0"

NOTE:
 A. BUILDINGS TO BE COMPLETELY SPRINKLERED PER SEC. 904.2.9 PER CITY OF AGOURA HILLS BUILDING CODE.
 B. ALL MATERIALS TO COMPLY WITH FIRE ZONE 4, CITY OF AGOURA HILLS BUILDING CODE SEC. 6402.1.
 C. ALL WINDOWS TO BE DUAL PANE (AS REQUIRED FOR FIRE ZONE 4).
 D. ROOFING MATERIAL TO BE CLASS-A.



1 SOUTH ELEVATION

SCALE: 1/8" = 1'-0"