

- ### LEGEND
- EXIST. MAJOR AND MINOR CONTOURS
 - PROPOSED MAJOR AND MINOR CONTOURS
 - PROPOSED 2:1 MAX. CUT SLOPE
 - PROPOSED 2:1 MAX. CUT SLOPE
 - PROPOSED DIRECTION AND RATE OF DRAINAGE
 - PROPOSED SPOT ELEVATION
 - FLOWLINE OR FINISHED SURFACE
 - EXISTING OAK TREE
 - L1 5'x5' ADA LANDING
 - L2 6'x6' ADA LANDING
 - R1 ADA CURB RAMP PER
 - PROPOSED RETAINING WALL
 - PROPOSED RETAINING WALL W/ 36" RAILING
 - PROPOSED CURB WALL W/ 36" RAILING

SLOPE CALCULATION

$$S = \frac{L \times 100}{A}$$

I = CONTOUR LINE ELEVATION INTERVAL IN FEET 10 FEET
 L = SUM OF THE LENGTH OF ALL CONTOUR LINES ACROSS THE PARCEL 2149 FEET
 A = NET AREA OF PARCEL IN SQUARE FEET 141,119 SQ. FT.
 S = AVERAGE PERCENT SLOPE 15.75%

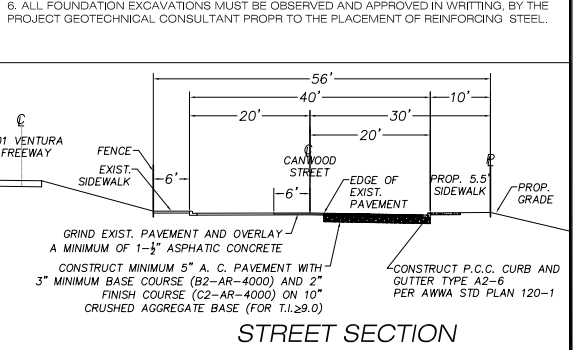
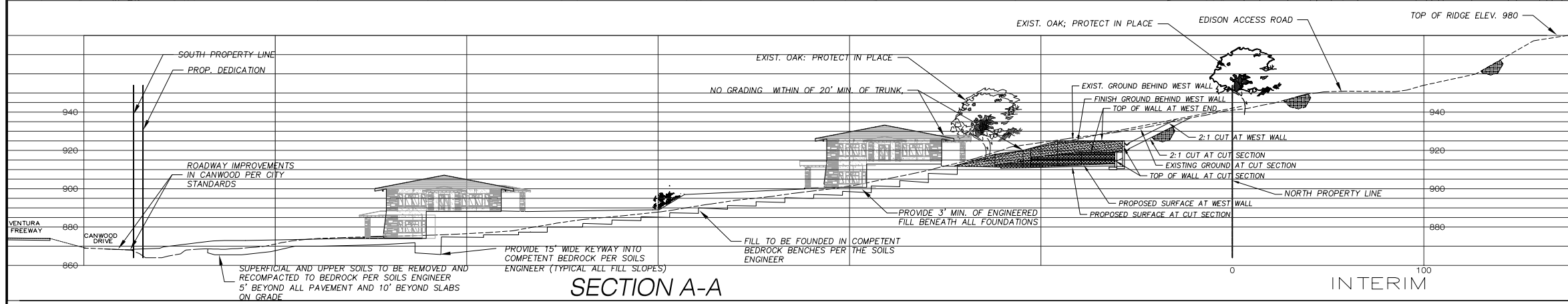
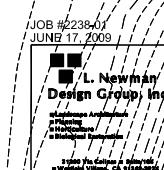
- ### GENERAL NOTES
- LOT AREA 141,119 SQ. FT.
 AVERAGE SLOPE: 16.0%
 TOTAL ALLOWABLE BUILDING AREA: 29,000 SQ. FT.
 PROPOSED BUILDING AREA: 25,200 SQ. FT.
 BUILDING COVERAGE: 20,332 SQ. FT. 14.4%
 PARKING AND DRIVEWAYS: 53,882 SQ. FT. 38.2%
 LANDSCAPING: 35,802 SQ. FT. 25.4%
 HARDSCAPE (WALKWAYS) 9,708 SQ. FT. 6.9%
 NATURAL HILLSIDE: 19,629 SQ. FT. 13.9%
- PARKING : 119 REGULAR SPACES
 8 HANDICAP SPACES (3 VAN)
 TOTAL PARKING : 126 SPACES
 REQUIRED: 5.0 PER 1,000 SQ. FT. OF BUILDING AREA (126 SPACES)
- GRADING QUANTITIES: 8,428 CY CUT
 13,274 CY FILL
 4,846 CY IMPORT

- ### GRADING NOTES
- TESTS SHALL BE PERFORMED PRIOR TO POURING FOOTINGS AND SLABS TO DETERMINE THE EXPANSION INDEX OF THE SUPPORTING SOILS, AND FOUNDATION AND SLAB PLANS SHOULD BE REVIEWED BY THE GEOTECHNICAL CONSULTANT AND REVISED, IF NECESSARY, ACCORDINGLY.
 - EXCAVATIONS SHALL BE MADE IN COMPLIANCE WITH CAL/OSHA REGULATIONS.
 - ALL FOUNDATIONS EXCAVATIONS MUST BE OBSERVED AND APPROVED, IN WRITING, BY THE PROJECT GEOTECHNICAL CONSULTANT PRIOR TO PLACEMENT OF REINFORCING STEEL.
 - A COMPACTION REPORT SHALL BE SUBMITTED TO THE CITY FOR REVIEW. THIS REPORT PREPARED BY THE GEOTECHNICAL CONSULTANT MUST INCLUDE THE RESULTS OF ALL COMPACTION TESTS AS WELL AS A MAP DEPICTING THE LIMITS OF FILL, LOCATIONS OF ALL DENSITY TESTS, OUTLINE AND ELEVATIONS OF ALL REMOVAL BOTTOMS, KEYWAY LOCATIONS AND BOTTOM ELEVATIONS, LOCATIONS OF ALL SUBDRAINS AND FLOW LINE ELEVATIONS, AND LOCATION AND ELEVATION OF ALL RETAINING WALL BACKDRAINS AND OUTLETS. GEOLOGIC CONDITIONS EXPOSED DURING GRADING MUST BE DEPICTED ON AN AS-BUILT GEOLOGIC MAP.
 - TESTS SHALL BE PERFORMED PRIOR TO POURING FOOTINGS AND SLABS TO DETERMINE TO EXPANSION INDEX OF THE SUPPORTING SOILS, AND FOUNDATION AND SLAB PLANS SHOULD BE REVIEWED, BY THE GEOTECHNICAL CONSULTANT AND REVISED, IF NECESSARY, ACCORDINGLY.
 - ALL FOUNDATION EXCAVATIONS MUST BE OBSERVED AND APPROVED IN WRITING, BY THE PROJECT GEOTECHNICAL CONSULTANT PRIOR TO THE PLACEMENT OF REINFORCING STEEL.



SEE SHEET 2 FOR ENLARGED PLAN

SCALE: 1" = 30'



ASSESSOR'S PARCELL NO. 2053-01-8

05 - C. U. P. - 006 & 05 - O T P - 032

REV. 01-26-09 OAK TREE LOCATION MAP

REVISION #	SYMBOL	DESCRIPTION OF CHANGE	APPROVED	DATE

PREPARED BY: **Holmes Enterprises**
 Structural and Civil Engineering
 200 Wicks Rd. Moorpark, CA. 93021
 (805) 532-1571 fax: (805) 532-1596

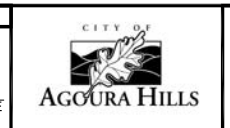
PROJECT ENGINEER: **DANNY P. HOLMES** RCE 24769 EXP. 12-31-2008

CITY OF AGOURA HILLS APPROVAL

REVIEWED BY: **RAMIRO ADEVA III** CITY ENGINEER

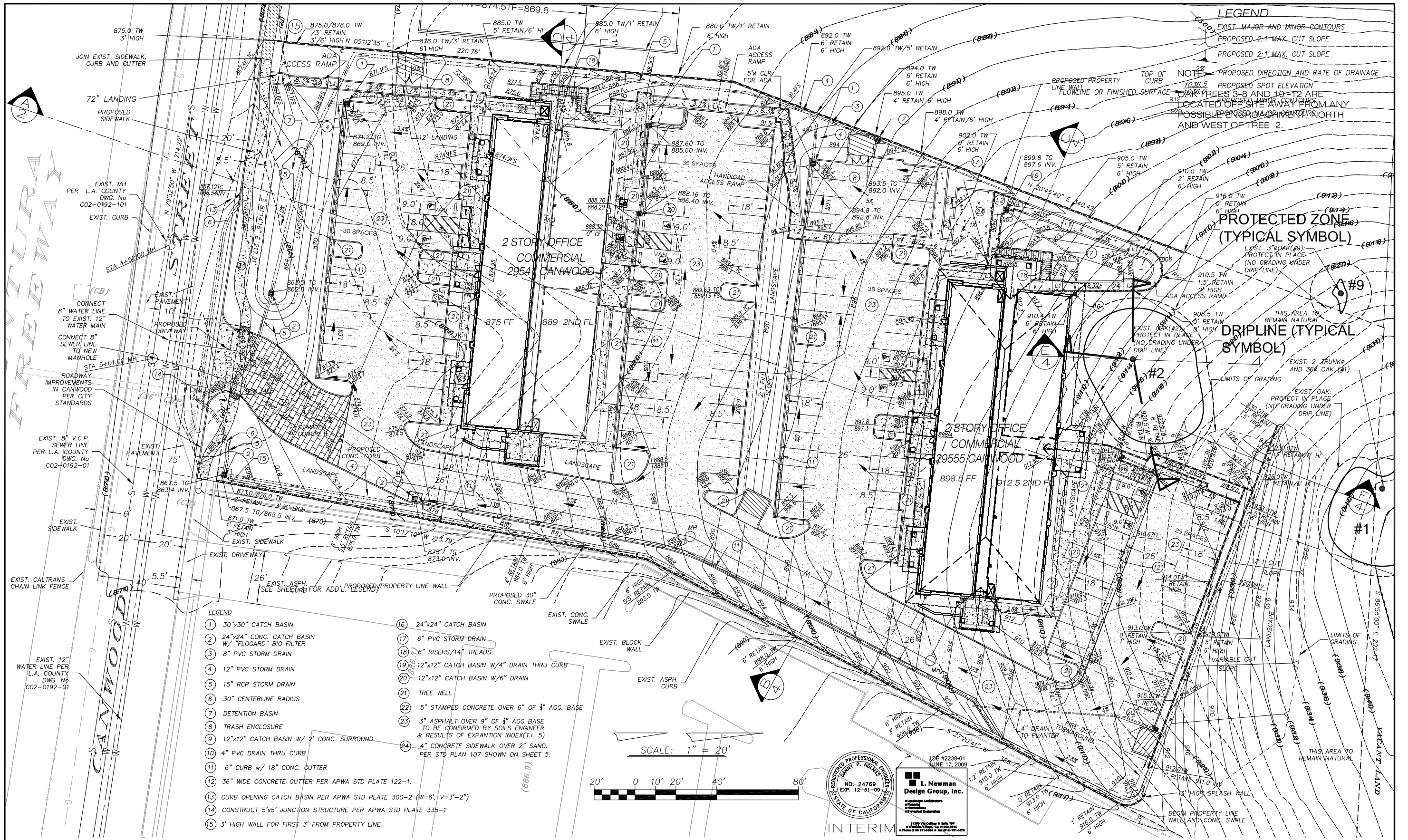
DATE: 9/30/10

RCE NO. 66865



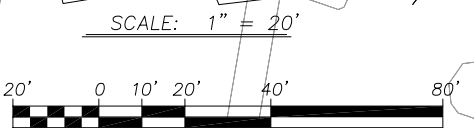
CANWOOD STREET OFFICES
 29541 AND 29555 CANWOOD STREET
 AGOURA HILLS CALIFORNIA

SHEET **1** OF **2**



LEGEND
 EXIST. MAJOR AND MINOR CONTOURS
 PROPOSED 2:1 MAX. CUT SLOPE
 PROPOSED 2:1 MAX. CUT SLOPE
 NOTE: PROPOSED DIRECTION AND RATE OF DRAINAGE
 PROPOSED SPOT ELEVATION
 OAK TREES 3-8 AND 10-12 ARE LOCATED 30' AWAY FROM ANY POSSIBLE ENCROACHMENT NORTH AND WEST OF TREE 2.

- LEGEND**
- 1 30"x30" CATCH BASIN
 - 2 24"x24" CONC. CATCH BASIN W/ "FLOGARD" BIO FILTER
 - 3 8" PVC STORM DRAIN
 - 4 12" PVC STORM DRAIN
 - 5 15" RCP STORM DRAIN
 - 6 30" CENTERLINE RADIUS
 - 7 DETENTION BASIN
 - 8 TRASH ENCLOSURE
 - 9 12"x12" CATCH BASIN W/ 2' CONC. SURROUND
 - 10 4" PVC DRAIN THRU CURB
 - 11 6" CURB W/ 18" CONC. GUTTER
 - 12 36" WIDE CONCRETE GUTTER PER APWA STD PLATE 122-1
 - 13 CURB OPENING CATCH BASIN PER APWA STD PLATE 300-2 (W=6', V=3'-2")
 - 14 CONSTRUCT 5'x5' JUNCTION STRUCTURE PER APWA STD PLATE 335-1
 - 15 3' HIGH WALL FOR FIRST 3' FROM PROPERTY LINE
 - 16 24"x24" CATCH BASIN
 - 17 6" PVC STORM DRAIN
 - 18 6" RISERS/14" TREADS
 - 19 12"x12" CATCH BASIN W/4" DRAIN THRU CURB
 - 20 12"x12" CATCH BASIN W/6" DRAIN
 - 21 TREE WELL
 - 22 5" STAMPED CONCRETE OVER 6" OF 3/4" AGG. BASE
 - 23 3" ASPHALT OVER 9" OF 3/4" AGG. BASE TO BE CONFIRMED BY SOILS ENGINEER & RESULTS OF EXPANTION INDEX(T.I. 5)
 - 24 4" CONCRETE SIDEWALK OVER 2" SAND. PER STD PLAN 107 SHOWN ON SHEET 5.



REGISTERED PROFESSIONAL ENGINEER
 DANNY P. HOLMES
 NO. 24769
 EXP. 12-31-09
 STATE OF CALIFORNIA

L. Newman
 Design Group, Inc.
 Landscape Architecture
 Civil Engineering
 Mechanical Engineering
 Electrical Engineering
 Fire Protection Engineering
 15000 E. 15th St., Suite 100
 Agoura Hills, CA 91301
 Phone: (805) 223-0100 Fax: (805) 223-0101

ASSESSOR'S PARCEL NO. 2053-01-8 REV. 01-26-09 05 - C. U. P. - 006 & 05 - O T P - 032

REVISION #	SYMBOL	DESCRIPTION OF CHANGE	APPROVED	DATE	PROJECT ENGINEER	DATE	REVIEWED BY	DATE	RAMIRO ADEVA III	DATE	66865	9/30/10	AGOURA HILLS	CITY OF AGOURA HILLS DWG. NO.
					DANNY P. HOLMES RCE 24769 EXP. 12-31-2008				CITY ENGINEER					

OAK TREE LOCATION MAP
 CANWOOD STREET OFFICES
 2954 AND 2955 CANWOOD STREET
 AGOURA HILLS CALIFORNIA

SHEET 2 OF 2