



Reyes Adobe Interchange Bridge Widening



**Public Information Workshop
August 19, 2009**

Agenda

- ▣ Housekeeping
- ▣ Key Contacts
- ▣ Project Team
- ▣ Project Background
- ▣ Project Description
- ▣ Funding
- ▣ Construction Staging
- ▣ Current Construction Schedule
- ▣ Stay Informed
- ▣ Questions?

Housekeeping

- ▣ Written Comments
- ▣ Cell Phones
- ▣ Restrooms

Contacts

- ▣ Ramiro Adeva, City Engineer
(818) 597-7353
radeva@ci.agoura-hills.ca.us
- ▣ Kelly Fisher, Public Works Project Manager
(818) 597-7338
kfisher@ci.agoura-hills.ca.us

Project Team

- ▣ Mysore Satish, STV
Designer
- ▣ Dragan Buha, Parsons Transportation Group
Construction Manager
- ▣ Sri Chakravarthy, Kimley Horn
City Traffic Engineer

Project Background

1965 – original bridge constructed

1974 – US 101 freeway widened

Need for Improvement

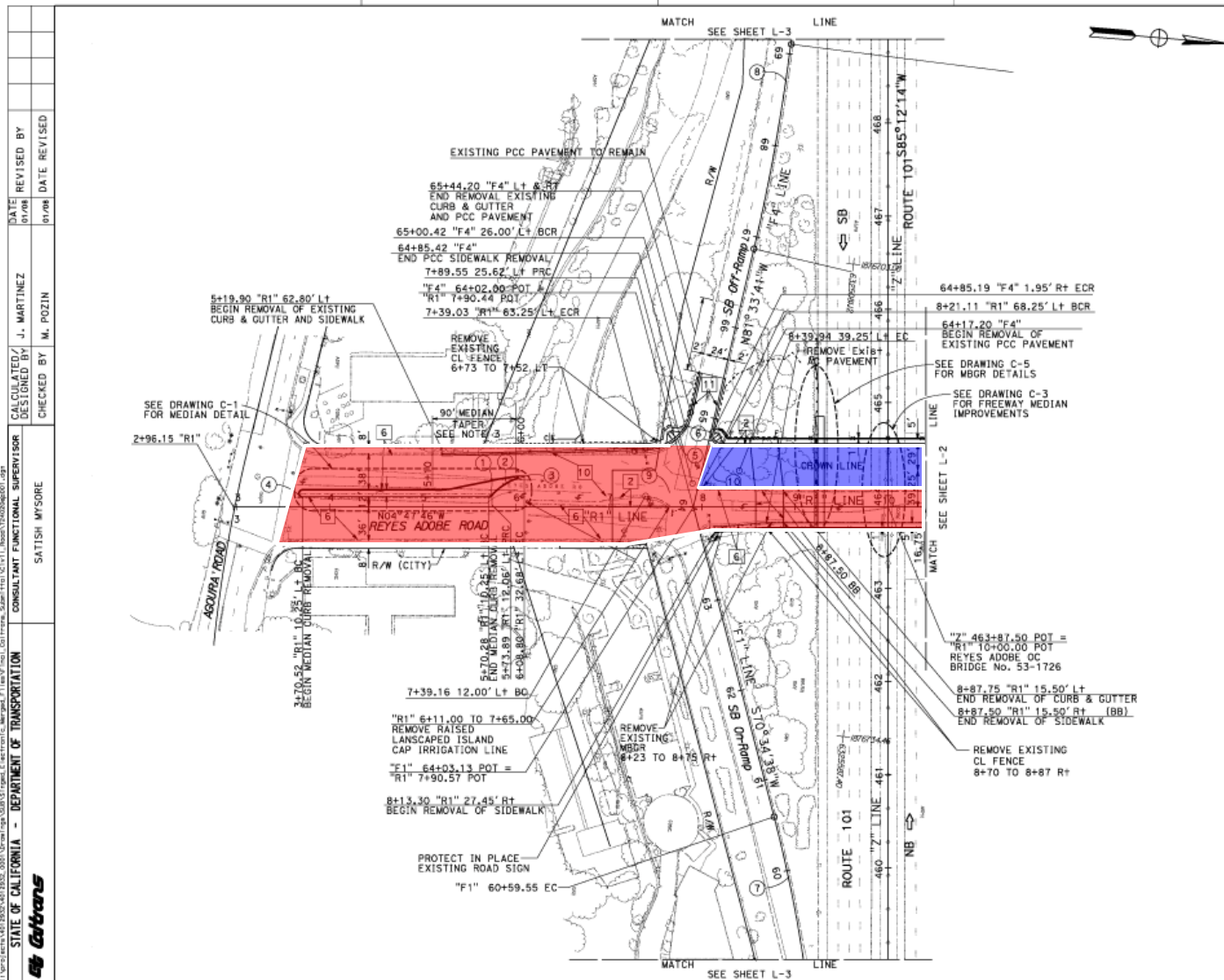
Over-Capacity

Safety

Structural Integrity



Project Description



DIST	COUNTY	LOCATION CODE	POST MILES TOTAL PROJECT	SHEET NO.	TOTAL SHEETS
07	LA	101	36.1/36.3	5	108

M. R. Satiah
 REGISTERED CIVIL ENGINEER
 6/30/2008
 PLANS APPROVAL DATE
 CITY OF AGOURA HILLS
 30001 LADYFACE COURT
 AGOURA HILLS, CALIFORNIA 91301

CITY INCORPORATED
 1055 WEST 7TH STREET, SUITE 3150
 LOS ANGELES, CALIFORNIA 90017

The State of California or its officers or agents shall not be responsible for the accuracy or completeness or electronic capture of this plan sheet.

To get to the Caltrans web site, go to <http://www.dot.ca.gov>

- NOTES :**
- FOR COMPLETE RIGHT OF WAY AND ACCURATE ACCESS DATA, SEE RIGHT OF WAY RECORD MAPS AT DISTRICT OFFICE.
 - FOR UTILITIES INFORMATION AND RELOCATION SEE UTILITY PLANS U-1 THROUGH U-3
 - CONSTRUCT MEDIAN BARRIERS PER DETAIL DRAWING C-5

CURVE TABLE

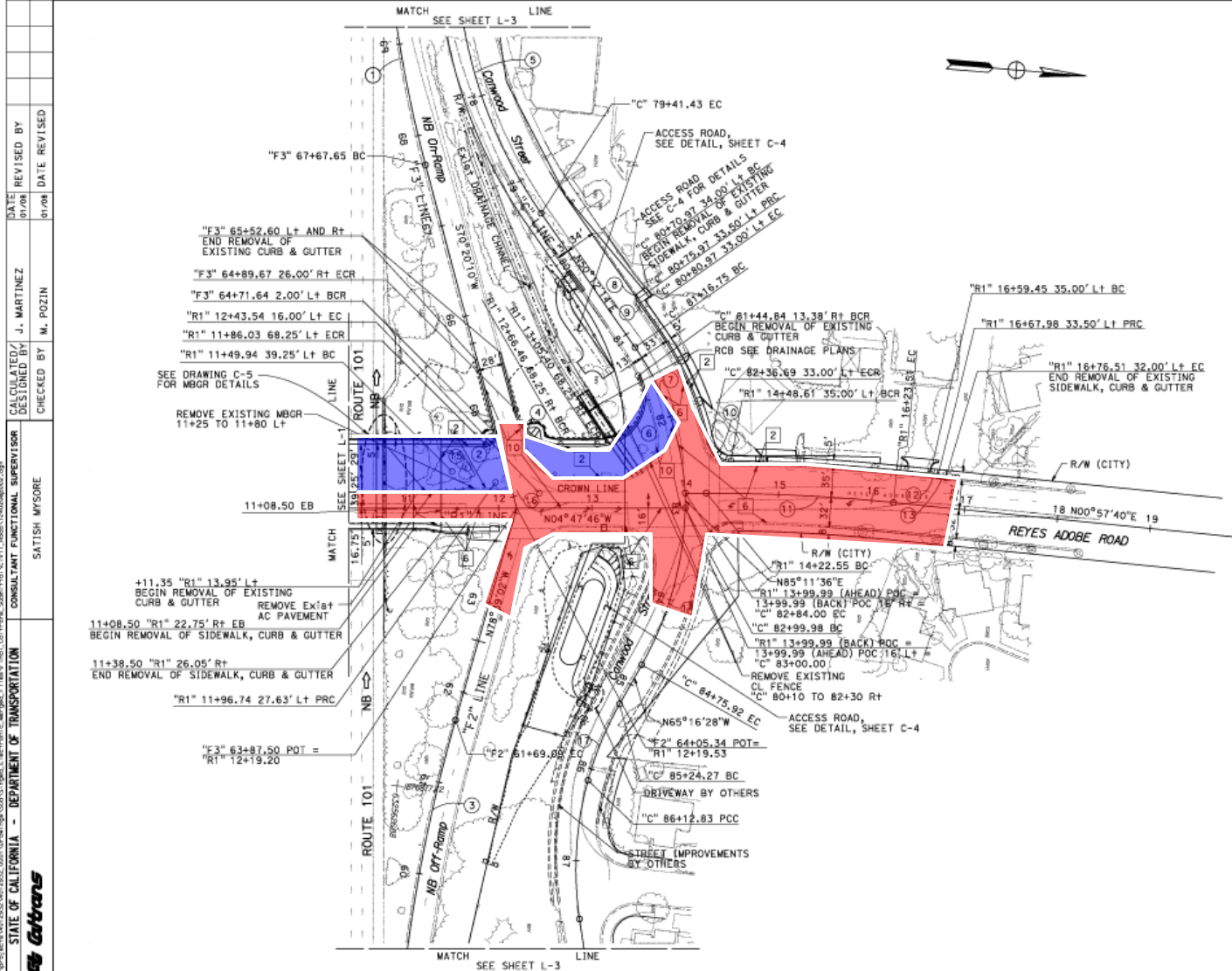
NO.	R	Δ	T	L
①	4.50'	53°20'45"	2.26'	4.19'
②	65.00'	36°20'34"	21.33'	41.23'
③	0.50'	169°58'31"	5.70'	1.48'
④	4.50'	180°00'00"	-	14.14'
⑤	50.00'	76°39'49"	39.53'	66.90'
⑥	10.00'	103°14'05"	12.62'	18.02'
⑦	1500'	12°17'35"	161.53'	321.83'
⑧	2100'	06°05'40"	111.79'	223.37'
⑨	100.00'	30°15'35"	27.04'	52.81'
⑩	100.00'	30°15'35"	27.04'	52.81'

ALL DIMENSIONS ARE IN FEET
 UNLESS OTHERWISE SHOWN
LAYOUT
 SCALE 1" = 50'
L-1

STATE OF CALIFORNIA - DEPARTMENT OF TRANSPORTATION
 CONSULTANT: SATISH WISORE
 REVISIONS: J. MARTINEZ, M. POZIN
 DATE: 01/08, 01/08



Project Description



DIST	COUNTY	LOCATION CODE	POST MILES	SHEET NO.	TOTAL SHEETS
07	LA	101	36.1/36.3	6	108

M. R. Satish 6/02/08
 REGISTERED CIVIL ENGINEER
 6/30/2008
 PLANS APPROVAL DATE
 CITY OF AGUERRA HILLS
 55001 LADYFACE COURT
 AGUERRA HILLS, CALIFORNIA 91301
 CIVIL
 STATE OF CALIFORNIA

STV INCORPORATED
 1055 WEST 7TH STREET, SUITE 3150
 LOS ANGELES, CALIFORNIA 90017
 The State of California or its officers or agents shall not be responsible for the accuracy or completeness of electronic copies of this plan sheet.
 To get to the Caltrans web site, go to <http://www.dgs.ca.gov>

CURVE TABLE

NO.	R	Δ	L	P
1	1400'	07°20'17"	89.77'	179.30'
2	10'	104°52'03"	13'	18.30'
3	1700'	08°48'56"	131.04'	261.57'
4	50'	75°07'56"	38.46'	65.57'
5	500'	32°50'29"	147.35'	286.60'
6	50'	118°00'15"	83.22'	102.98'
7	300'	31°56'34"	85.66'	167.25'
8	25'	11°32'09"	2.53'	5.03'
9	25'	11°32'09"	2.53'	5.03'
10	24'	77°01'50"	19.10'	32.27'
11	2000'	05°45'26"	100.57'	200.96'
12	25'	19°56'54"	4.40'	8.70'
13	25'	19°56'54"	4.40'	8.70'
14	360'	28°00'06"	89.76'	175.94'
15	100'	27°54'07"	24.84'	48.70'
16	100'	27°54'07"	24.84'	48.70'
17	350'	14°05'39"	44.50'	88.56'

ALL DIMENSIONS ARE IN FEET UNLESS OTHERWISE SHOWN
LAYOUT
 SCALE 1" = 50' L-2

DATE REVISIONS BY
 01/08 01/08
 J. MARTINEZ
 M. POZIN
 CALCULATED/DESIGNED BY
 CHECKED BY
 SATISH MYSORE
 CONSULTANT FUNCTIONAL SUPERVISOR
 STATE OF CALIFORNIA - DEPARTMENT OF TRANSPORTATION
 Caltrans

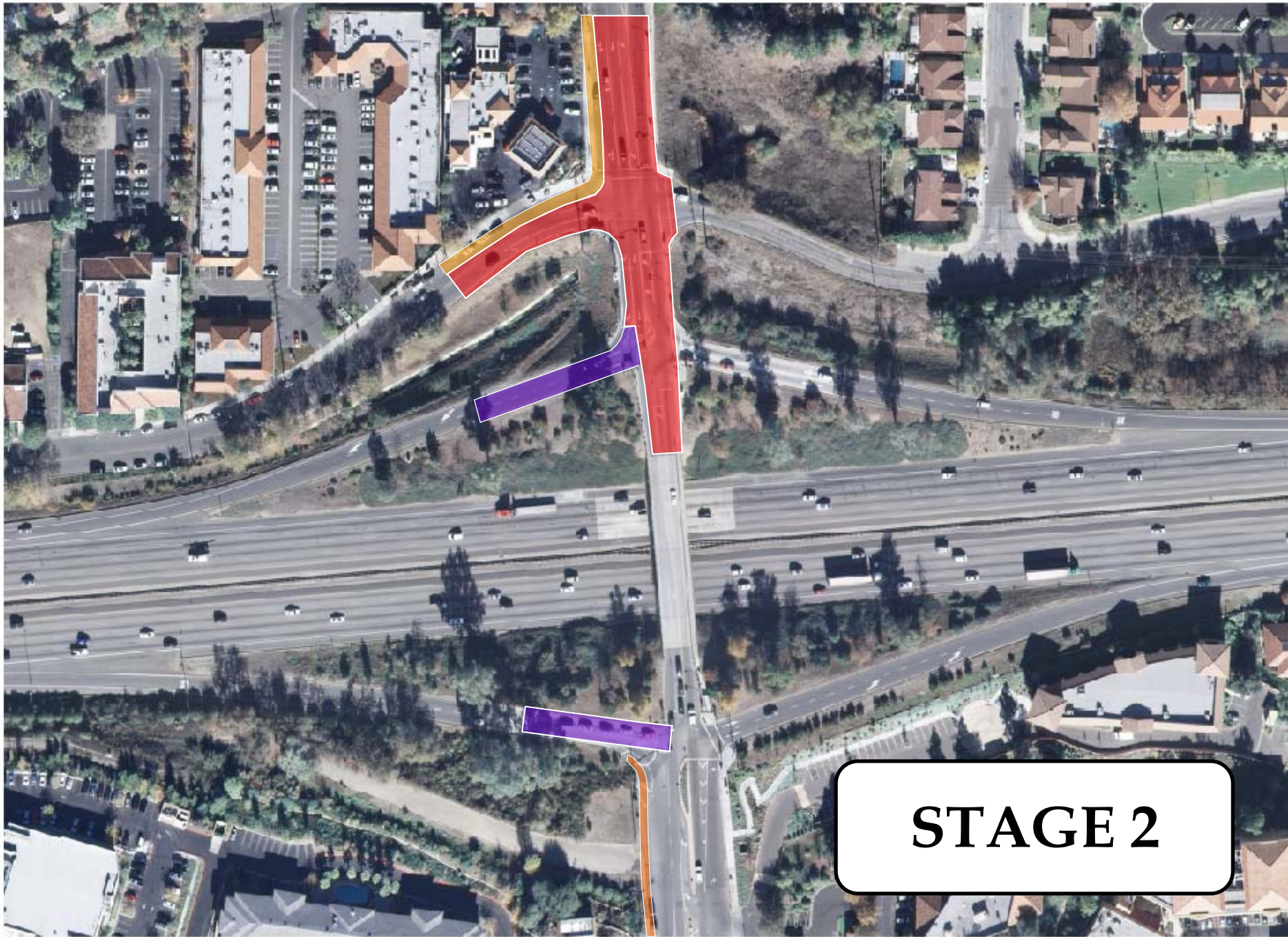
Funding

- ▣ Engineers Estimate = \$7.78M
- ▣ Low Bid = \$4.64M
- ▣ Savings = over \$3M!
- ▣ Federal grants, Stimulus funds, MTA grant, TIF funds, and RDA funds
- ▣ <10% General Fund needed
- ▣ No New Taxes

Construction Staging



STAGE 1



STAGE 2



STAGE 3



STAGE 4

Construction Schedule

- ▣ July 28, 2009 – award contract
- ▣ 55-day SWPPP review
- ▣ Mid-September '09/Early October '09 – start construction
- ▣ February 2011 – Finish Construction

Construction Schedule

- ▣ SPECIAL NOTES
 - 90-day Settlement Period
 - Night Work

Stay Informed

- ▣ Website: www.ci.agoura-hills.ca.us
- ▣ C-mail
- ▣ Hotline: (818) 597-7356

- ▣ Ramiro Adeva (818) 597-7353
radeva@ci.agoura-hills.ca.us

- ▣ Kelly Fisher (818) 597-7338
kfisher@ci.agoura-hills.ca.us

An aerial rendering of a modern road interchange. A multi-lane road crosses a bridge over a lower road. The bridge has a black metal railing. The surrounding area is landscaped with green grass, trees, and colorful flowers. In the background, there are buildings with red-tiled roofs and a parking lot. The word "QUESTIONS?" is written in large, bold, red, 3D-style letters across the center of the image.

QUESTIONS?