



# Reyes Adobe Interchange Bridge Widening



**Public Information Workshop  
August 19, 2009**

# Agenda

- ▣ Housekeeping
- ▣ Key Contacts
- ▣ Project Team
- ▣ Project Background
- ▣ Project Description
- ▣ Funding
- ▣ Construction Staging
- ▣ Current Construction Schedule
- ▣ Stay Informed
- ▣ Questions?

# Housekeeping

- ▣ Written Comments
- ▣ Cell Phones
- ▣ Restrooms

# Contacts

- ▣ Ramiro Adeva, City Engineer  
(818) 597-7353  
radeva@ci.agoura-hills.ca.us
- ▣ Kelly Fisher, Public Works Project Manager  
(818) 597-7338  
kfisher@ci.agoura-hills.ca.us

# Project Team

- ▣ Mysore Satish, STV  
Designer
- ▣ Dragan Buha, Parsons Transportation Group  
Construction Manager
- ▣ Sri Chakravarthy, Kimley Horn  
City Traffic Engineer

# Project Background

1965 – original bridge constructed

1974 – US 101 freeway widened

# Need for Improvement

Over-Capacity

Safety

Structural Integrity

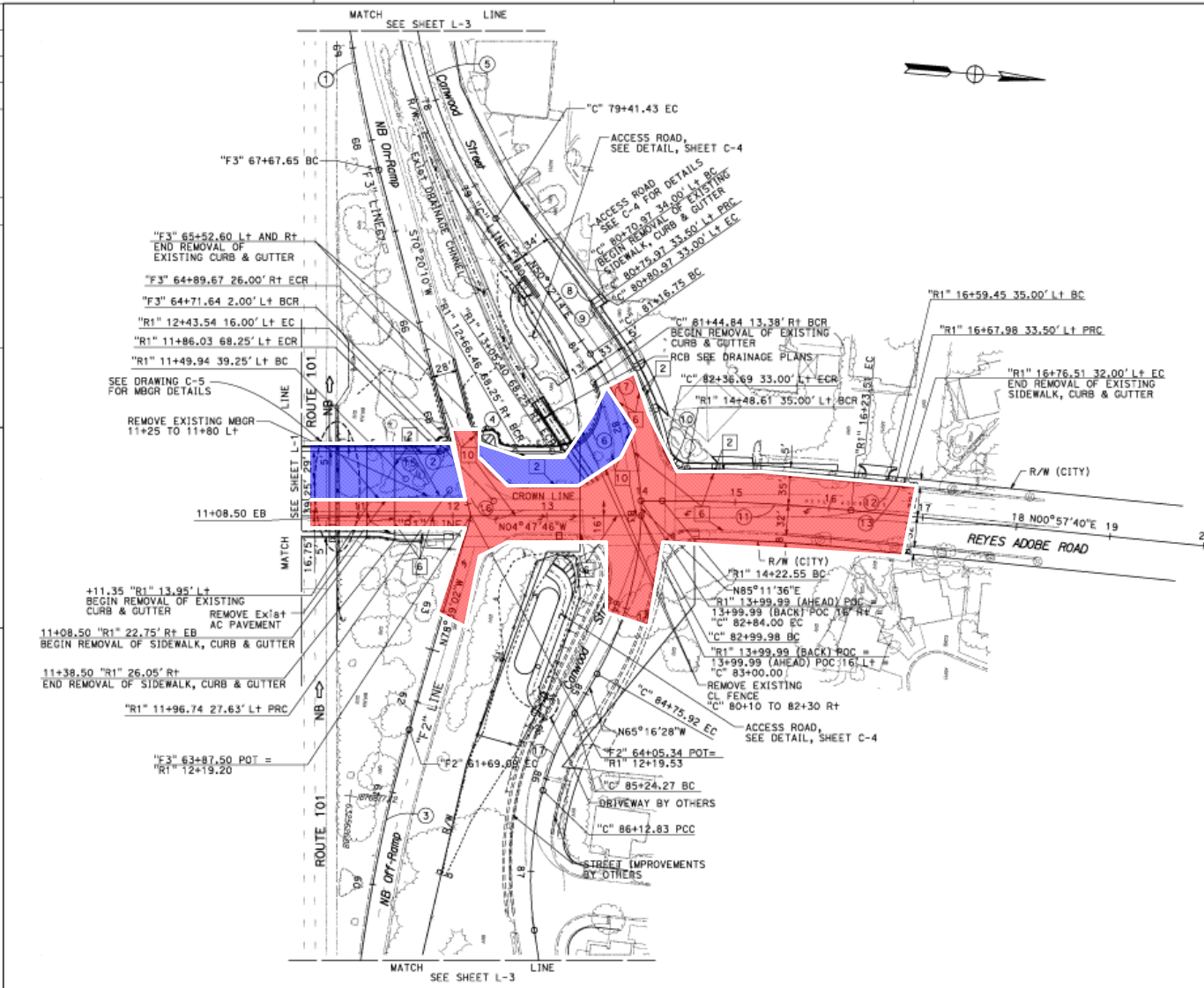






# Project Description

DATE	REVISION	BY
01/08		J. MARTINEZ
01/08		M. POZIN
CALCULATED/DESIGNED BY		
CHECKED BY		
CONSULTANT FUNCTIONAL SUPERVISOR		
STATE OF CALIFORNIA - DEPARTMENT OF TRANSPORTATION		



DIST	COUNTY	LOCATION CODE	POST MILES TOTAL PROJECT	SHEET NO.	TOTAL SHEETS
07	LA	101	36.1/36.3	6	108

REGISTERED CIVIL ENGINEER  
 M. R. Sattler  
 6/02/08  
 PLANS APPROVAL DATE  
 6/30/2008  
 CITY OF AGUADA HILLS  
 3000 LADYFACE COURT  
 AGUADA HILLS, CALIFORNIA 91301

CIVIL ENGINEER  
 M. R. Sattler  
 No. C48546  
 Exp. 4/30/10  
 CIVIL  
 STATE OF CALIFORNIA

STV INCORPORATED  
 2055 WEST 7TH STREET, SUITE 3150  
 LOS ANGELES, CALIFORNIA 90017

The State of California or its officers or agents shall not be responsible for the accuracy or completeness of electronic copies of this plan sheet.  
 To get the California web site, go to <http://www.dgs.ca.gov>

CURVE TABLE

NO.	R	Δ	L	P
1	1400'	07°20'17"	89.77'	179.30'
2	10'	104°52'03"	13'	18.30'
3	1700'	08°48'56"	131.04'	261.57'
4	50'	75°07'56"	38.46'	65.57'
5	500'	32°50'29"	147.35'	286.60'
6	50'	118°00'15"	83.22'	102.98'
7	300'	31°56'34"	85.66'	167.25'
8	25'	11°32'09"	2.53'	5.03'
9	25'	11°32'09"	2.53'	5.03'
10	24'	77°01'50"	19.10'	32.27'
11	2000'	05°45'26"	100.57'	200.96'
12	25'	19°56'54"	4.40'	8.70'
13	25'	19°56'54"	4.40'	8.70'
14	360'	28°00'06"	89.76'	175.94'
15	100'	27°54'07"	24.84'	48.70'
16	100'	27°54'07"	24.84'	48.70'
17	350'	14°05'39"	44.50'	88.56'

ALL DIMENSIONS ARE IN FEET  
 UNLESS OTHERWISE SHOWN  
**LAYOUT**  
 SCALE 1" = 50'  
**L-2**

LABEL REVISION DATE BY OTHER P. V. L. 100-10000

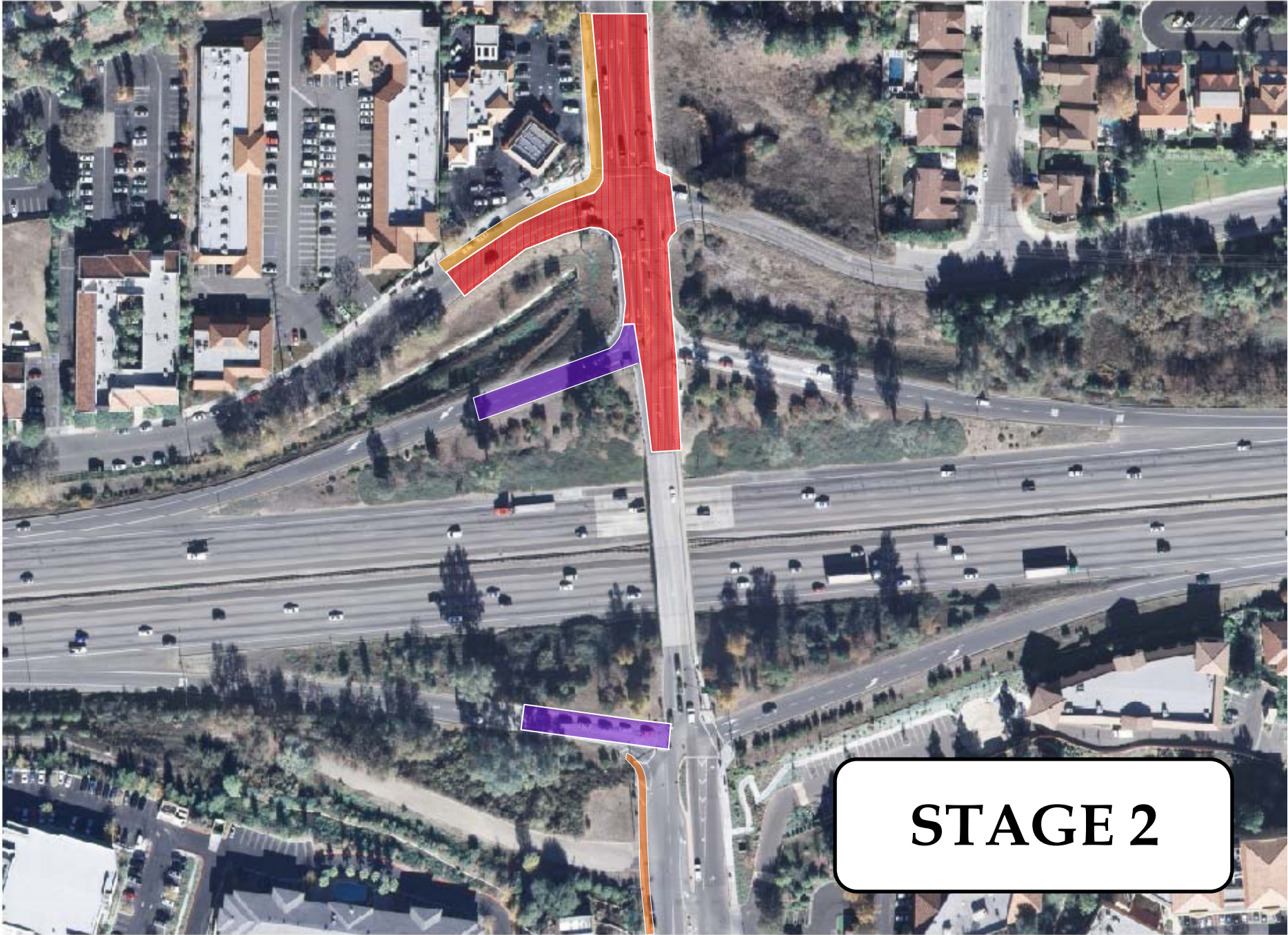
# Funding

- ▣ Engineers Estimate = \$7.78M
- ▣ Low Bid = \$4.64M
- ▣ Savings = over \$3M!
- ▣ Federal grants, Stimulus funds, MTA grant, TIF funds, and RDA funds
- ▣ <10% General Fund needed
- ▣ No New Taxes

# Construction Staging



**STAGE 1**



**STAGE 2**



**STAGE 3**



**STAGE 4**

# Construction Schedule

- ▣ July 28, 2009 – award contract
- ▣ 55-day SWPPP review
- ▣ Mid-September '09/Early October '09 – start construction
- ▣ February 2011 – Finish Construction



# Construction Schedule

## ▣ SPECIAL NOTES

- 90-day Settlement Period
- Night Work

# Stay Informed

- ▣ Website: [www.ci.agoura-hills.ca.us](http://www.ci.agoura-hills.ca.us)
- ▣ C-mail
- ▣ Hotline: (818) 597-7356
  
- ▣ Ramiro Adeva (818) 597-7353  
[radeva@ci.agoura-hills.ca.us](mailto:radeva@ci.agoura-hills.ca.us)
  
- ▣ Kelly Fisher (818) 597-7338  
[kfisher@ci.agoura-hills.ca.us](mailto:kfisher@ci.agoura-hills.ca.us)



**QUESTIONS?**