



**MEMORANDUM**

**DATE:** NOVEMBER 5, 2009

**TO:** PLANNING COMMISSION

**FROM:** PLANNING STAFF

**SUBJECT:** PRESENTATION OF INFORMATION REGARDING THE REYES ADOBE ROAD/HIGHWAY 101 INTERCHANGE IMPROVEMENTS

---

The purpose of this item is for City staff to present information to the Planning Commission regarding the U.S. 101 Freeway / Reyes Adobe Road Interchange project. The project just recently commenced construction so City staff would like to take this opportunity to update the Commission on the project. This is an information item only and there is no action required by the Planning Commission.

The U.S. 101 Freeway / Reyes Adobe Road Interchange currently consists of a three-lane bridge with single left-turn pockets for the northbound and southbound on-ramps. A single sidewalk is located on the east side of the bridge. No bicycle lanes or pedestrian light fixtures are located on the bridge.

The interchange project will make improvements to the existing outdated interchange, primarily by widening the west side of the existing three-lane bridge to accommodate six lanes, including left-run pockets. The improvements also include providing sidewalks on both sides of the bridge, decorative lighting and railing, landscaping on each quadrant of the interchange, the construction of a water quality basin on the southeast corner of Canwood Street and Reyes Adobe Road, and the realignment of utility poles located on Canwood Street. Clearing and grubbing of the project site has begun and a culvert located at the southwest corner of Canwood Street and Reyes Adobe Road and been removed.

The improvements will help alleviate congestion leading to the interchange as well as on the overpass, increase pedestrian and bicycle safety thus encouraging people to walk or ride, improve landscaping at this important City gateway, and generally improves north-south access from one side of the freeway to another in the western part of the City.

The Reyes Adobe Road Bridge was first constructed in 1965. The construction of the diamond interchange provided a safe passage for through and local traffic in the area at

that time. In 1974, the U.S. 101 Freeway was widened from a four-lane highway to an eight-lane freeway. The widening required the reconfiguration of the on- and off-ramps at Reyes Adobe Road. This configuration resulted in the tight diamond interchange that exists today.

The bridge widening project will occur over four stages. Stage 1 consists of fill grading and construction of the bridge widening and will be completed by October of 2010. Stage 2 consists of construction of northbound on-ramp and southbound off-ramp modifications, and the sidewalks on Reyes Adobe Road. This second stage is expected to be completed in November of 2010. Stage 3 will be completed in December of 2010 and consists of street median work. Stage 4 is to occur in late December of 2010, through January of 2011, and includes the street overlays and punch-list items. Final completion of the project is expected in February of 2011.

Crews will soon be clearing the low-lying area just south of the southbound off-ramp mentioned above and filling it with clean fill material for the first 200 feet. The City of Agoura Hills has used this old off-ramp area in the past for a construction staging operation for various Public Works projects such as Annual Street paving projects and the Kanan Road interchange project. The contractor for the new interchange project has moved his office trailer and equipment in this narrow area. A more reasonable size staging area will be created to establish a workable level area for the staging of equipment necessary for the anticipated construction activities for the next year to eighteen months.

The plan is to clean the area of debris and foliage, build a masonry block retaining wall (slightly south of Caltrans property line), and bring in fill material from a borrow site (28661 Canwood Street). The current estimate is to import about 2,300 to 2,500 cubic yard of clean fill material to level a pad area that is 125 foot wide and 200 foot long. The finished grade of this receiving site will be raised an approximate average of 5 feet, creating a gradual cross-slope of approximately 3% away from Reyes Adobe Road. This grading work meets all Caltrans requirements and City requirements, and the conditions of a grading permit.

The borrow site is City-owned, vacant property at 28661 Canwood Street, is located between Clareton Drive and Derry Avenue. That site has excess earth material and an access road to the top of the pre-graded, relatively flat knoll located near the south end of the property. The height of this knoll will be lowered by approximately 4-5 feet, to a topographic elevation of 907 feet, which is 20 feet above Canwood Street.

The number of truck trips required for the soil transport is approximately 170, assuming a normal hauling truck carries 15 cubic yard per trip. Also, it is assumed that the earthwork operation, which is beginning this week, will take about ten working days to accomplish the anticipated task and provide a safe staging area for the construction. The anticipated fill meets all the requirements of the City's Grading Ordinance and all typical conditions of grading permits to protect public health, safety, and welfare. The haul route will begin at the Canwood grading site, with trucks heading westbound on Canwood Street to the 101 Freeway northbound on-ramp at Kanan Road, to the Reyes Adobe Road exit, and

southbound on Reyes Adobe Road to the project site. Trucks will leave the fill site by traveling eastbound on Agoura Road to northbound Kanan Road, and will then head eastbound on Canwood Street to the grading site.

Funding for the interchange project will consist of Federal grants, a Los Angeles County Metropolitan Transportation Authority (MTA) grant, the City's Traffic Impact Fees, and economic stimulus funds.

There will be some street closures for construction. The City has established a hotline which is updated weekly with information on construction schedule and road closures. The hotline number is (818) 597-7356. In addition, the City's website ([www.ci.agoura-hills.ca.us](http://www.ci.agoura-hills.ca.us)) is updated regularly, and staff is available to answer questions throughout the duration of the project.

#### **ATTACHMENTS**

- Interchange Project Rendering
- Interchange Plans
- Grading Plans













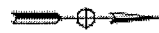
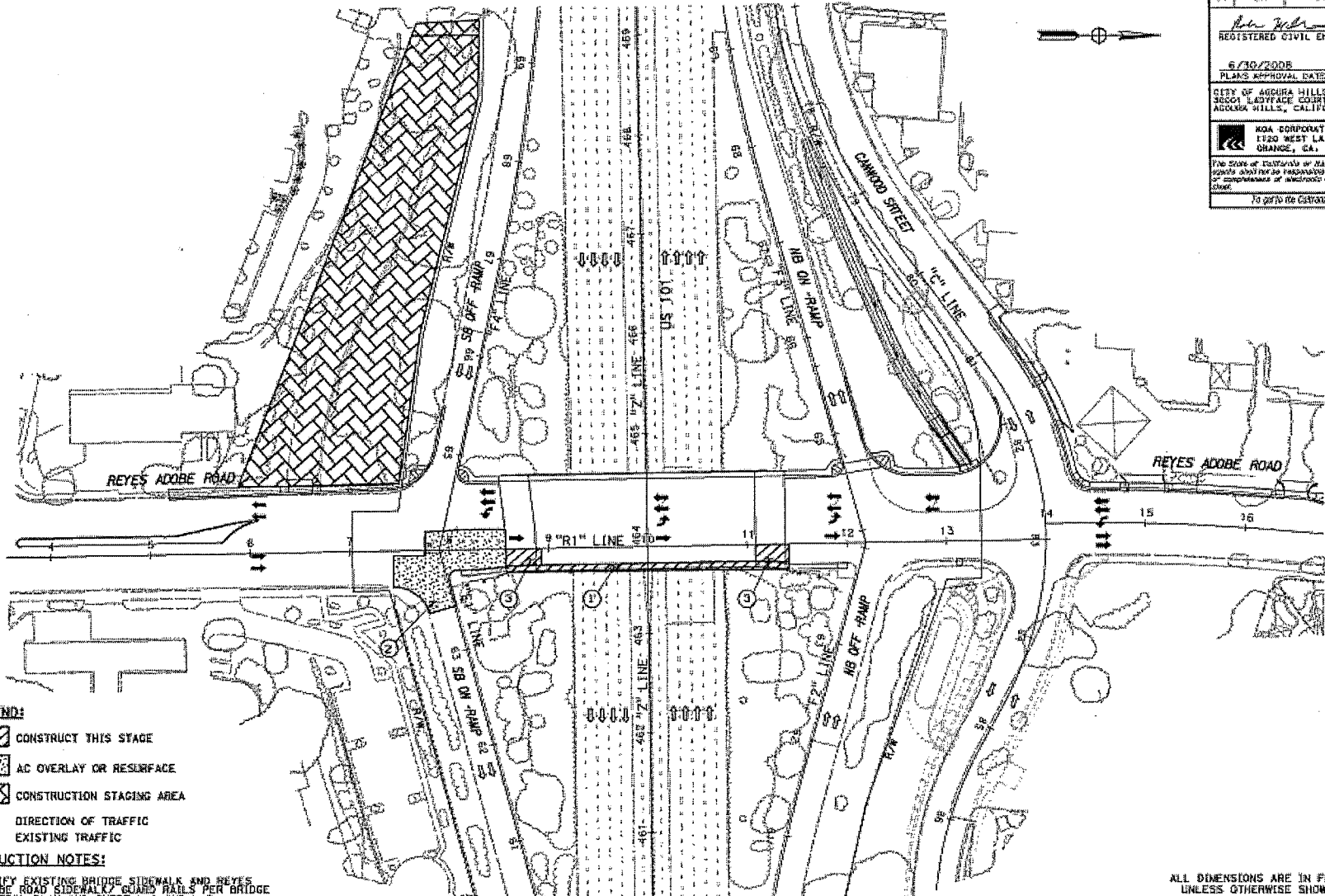
11/16/2008 08:00:00 AM  
 STATE OF CALIFORNIA - DEPARTMENT OF TRANSPORTATION  
 CONSULTANT FUNCTIONAL SUPERVISOR  
 ROCK E. MILLER  
 CALCULATED/ DESIGNED BY  
 JULIA S. WU  
 CHECKED BY  
 ROCK E. MILLER  
 DATE  
 06/08  
 REVISED BY  
 DATE REVISED  
 06/08

DIST.	COUNTY	LOCATION CODE	POST MILES TOTAL PROJECT	SHEET NO.	TOTAL SHEETS
07	LA	101	36.1/36.3	35	108

6/30/2008  
 PLANS APPROVAL DATE  
 CITY OF AGUERRA HILLS  
 36001 LADYFACE COURT  
 AGUERRA HILLS, CALIFORNIA 91301

REGISTERED CIVIL ENGINEER  
 6/2/08  
 19524  
 03-31-09  
 CIVIL

ROA CORPORATION  
 1130 WEST LA VETA AVE., SUITE 840  
 CHANCE, CA, 92508  
 THE STATE OF CALIFORNIA OR HIS OFFICERS OR AGENTS SHALL NOT BE RESPONSIBLE FOR THE OCCURRENCE OR COMPLETION OF WORKSHOWN ON THIS PLAN SHEET.  
 To go to the CDOT website, go to: <http://www.cdot.gov>



- LEGEND:**
- CONSTRUCT THIS STAGE
  - AC OVERLAY OR RESURFACE
  - CONSTRUCTION STAGING AREA
  - DIRECTION OF TRAFFIC
  - ⇌ EXISTING TRAFFIC

- CONSTRUCTION NOTES:**
- ① MODIFY EXISTING BRIDGE SIDEWALK AND REYES Adobe ROAD SIDEWALK/ GUARD RAILS PER BRIDGE GENERAL PLAN AND SHEET L-1 AND L-2.
  - ② AC OVERLAY PER L-1.
  - ③ CONSTRUCT PORTION OF APPROACH SLAB PER BRIDGE PLANS.

ALL DIMENSIONS ARE IN FEET  
 UNLESS OTHERWISE SHOWN  
**STAGE CONSTRUCTION PLAN**  
**STAGE 4 INDEX**  
 SCALE 1"=50'

**SC-4**

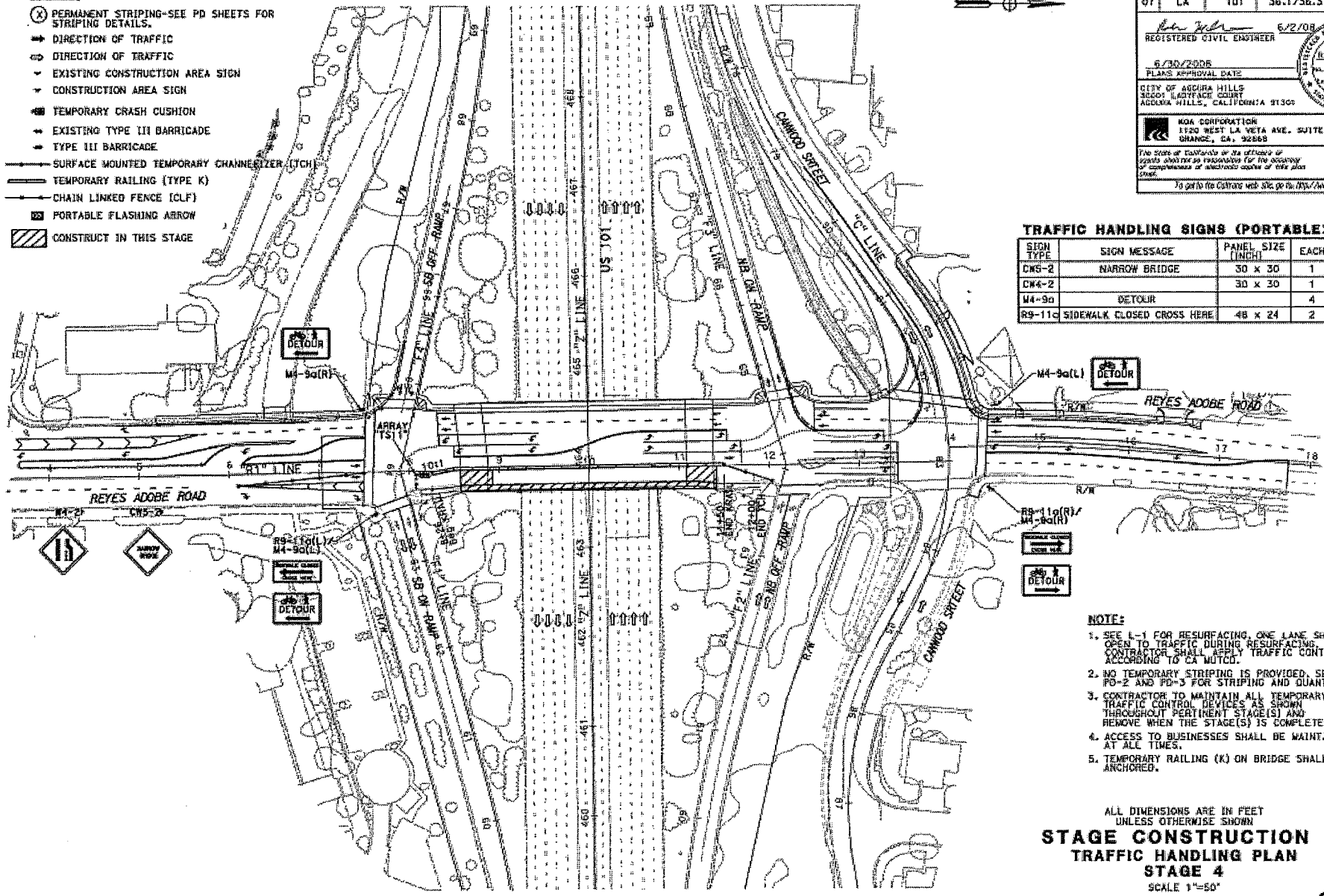
THIS PLAN ACCURATE FOR STAGE CONSTRUCTION WORK ONLY.

CADD SYSTEMS: DAY BY DAY - 704-796-7506

REVISIONS: DATE REVISION BY  
 06/08 06/08 JULIA S. WU  
 06/08 06/08 ROCK E. MILLER  
 CALCULATED/DRAWN BY: ROCK E. MILLER  
 CHECKED BY: ROCK E. MILLER  
 CONSULTANT: ROCK E. MILLER  
 STATE OF CALIFORNIA - DEPARTMENT OF TRANSPORTATION  
 Caltrex

**LEGEND:**

- (X) PERMANENT STRIPING-SEE PD SHEETS FOR STRIPING DETAILS.
- DIRECTION OF TRAFFIC
- ↔ DIRECTION OF TRAFFIC
- ⚠ EXISTING CONSTRUCTION AREA SIGN
- ⚠ CONSTRUCTION AREA SIGN
- ⚠ TEMPORARY CRASH CUSHION
- ⚠ EXISTING TYPE III BARRICADE
- ⚠ TYPE III BARRICADE
- SURFACE MOUNTED TEMPORARY CHANNELIZER (TCH)
- TEMPORARY RAILING (TYPE K)
- CHAIN LINKED FENCE (CLF)
- ↔ PORTABLE FLASHING ARROW
- ▨ CONSTRUCT IN THIS STAGE



DIST.	COUNTY	LOCATION CODE	POST MILES TOTAL PROJECT	SHEET NO.	TOTAL SHEETS
07	LA	101	36.1/38.3	40	108

6/2/08  
 REGISTERED CIVIL ENGINEER  
 6/30/2008  
 PLANS APPROVAL DATE  
 CITY OF ANGELES  
 1120 WEST LA VETA AVE. SUITE 840  
 ANGELES, CALIFORNIA 91305  
 NGA CORPORATION  
 1120 WEST LA VETA AVE. SUITE 840  
 ANGELES, CA 92868  
 The State of California or its officers or agents shall not be responsible for the accuracy or completeness of information shown on this plan.  
 To go to the Caltrans web site, go to: <http://www.caltrans.gov>

**TRAFFIC HANDLING SIGNS (PORTABLE)**

SIGN TYPE	SIGN MESSAGE	PANEL SIZE (INCH)	EACH
CMS-2	NARROW BRIDGE	30 x 30	1
DM4-2		30 x 30	1
M4-9a	DETOUR		4
R9-11c	SIDEWALK CLOSED CROSS HERE	48 x 24	2

**NOTE:**

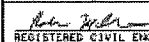


1. SEE L-1 FOR RESURFACING, ONE LANE SHALL BE OPEN TO TRAFFIC DURING RESURFACING. CONTRACTOR SHALL APPLY TRAFFIC CONTROL ACCORDING TO CA MUTCD.
2. NO TEMPORARY STRIPING IS PROVIDED, SEE PD-1, PD-2 AND PD-3 FOR STRIPING AND QUANTITY.
3. CONTRACTOR TO MAINTAIN ALL TEMPORARY TRAFFIC CONTROL DEVICES AS SHOWN THROUGHOUT PERTINENT STAGE(S) AND REMOVE WHEN THE STAGE(S) IS COMPLETED.
4. ACCESS TO BUSINESSES SHALL BE MAINTAINED AT ALL TIMES.
5. TEMPORARY RAILING (K) ON BRIDGE SHALL BE ANCHORED.

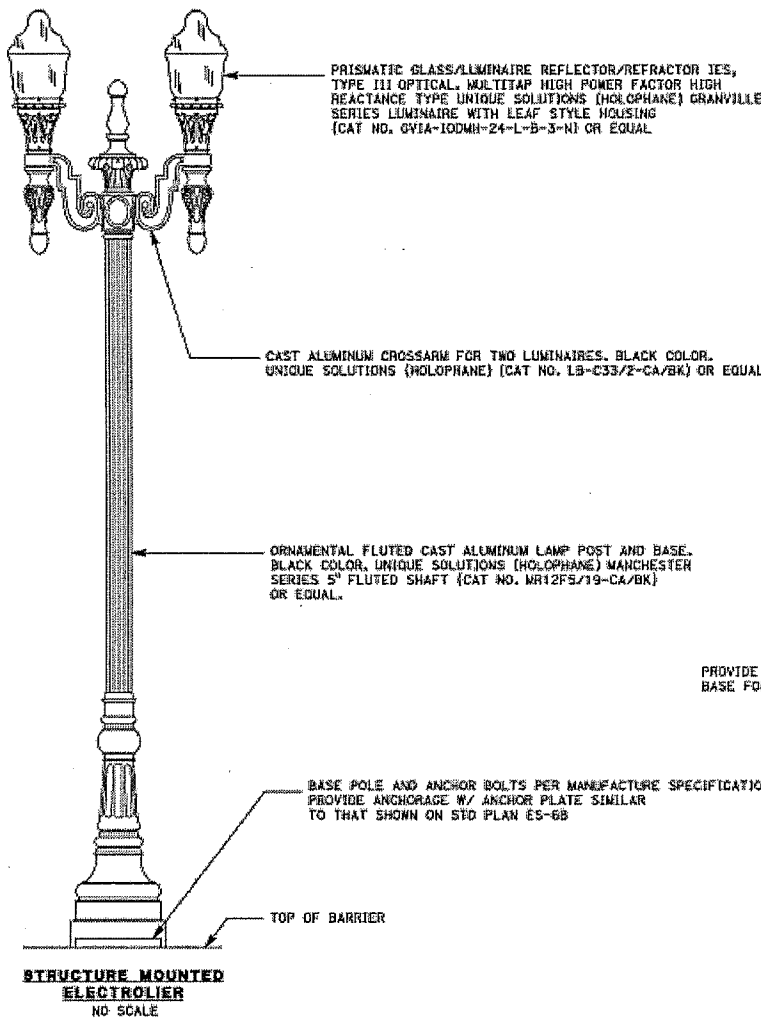
ALL DIMENSIONS ARE IN FEET UNLESS OTHERWISE SHOWN  
**STAGE CONSTRUCTION TRAFFIC HANDLING PLAN**  
**STAGE 4**  
 SCALE 1"=50'

THIS PLAN ACCURATE FOR STAGE CONSTRUCTION WORK ONLY.

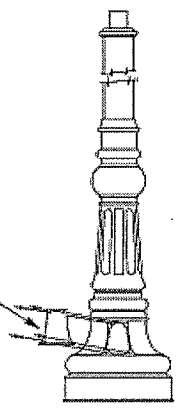
SC-9

DATE REVISION	REVISED BY
CALCULATED/ DESIGNED BY	JULIA S. NU
CHECKED BY	ROCK E. MILLER
CONSULTANT FUNCTIONAL SUPERVISOR	ROCK E. MILLER
CONSULTANT PROJECT NO.	
STATE OF CALIFORNIA - DEPARTMENT OF TRANSPORTATION	
<b>Caltrans</b>	

DIST	COUNTY	LOCATION CODE	POST MILES TOTAL PROJECT	SHEET NO.	TOTAL SHEETS
07	LA	101	36.1/36.3	78	108
 REGISTERED CIVIL ENGINEER		6/2/08 			
6/30/2008		PLANS APPROVAL DATE			
CITY OF AUBURN HILLS		3800 LADYFACE COURT			
AUBURN HILLS, CALIFORNIA 47130		CIVIL			
 MGA CORPORATION 1120 WEST LA VETA AVE. SUITE 340 DUNSMIRE, CA 92868		The State of California or its officers or agents shall not be responsible for the accuracy or completeness of electronic copies of this plan sheet. To get to the Caltrans web site go to <a href="http://www.dot.ca.gov">http://www.dot.ca.gov</a>			



PROVIDE 3" X 4" X 5" HIGH DOOR OPENING IN BASE FOR ANCHORING AND WIRING ACCESS.



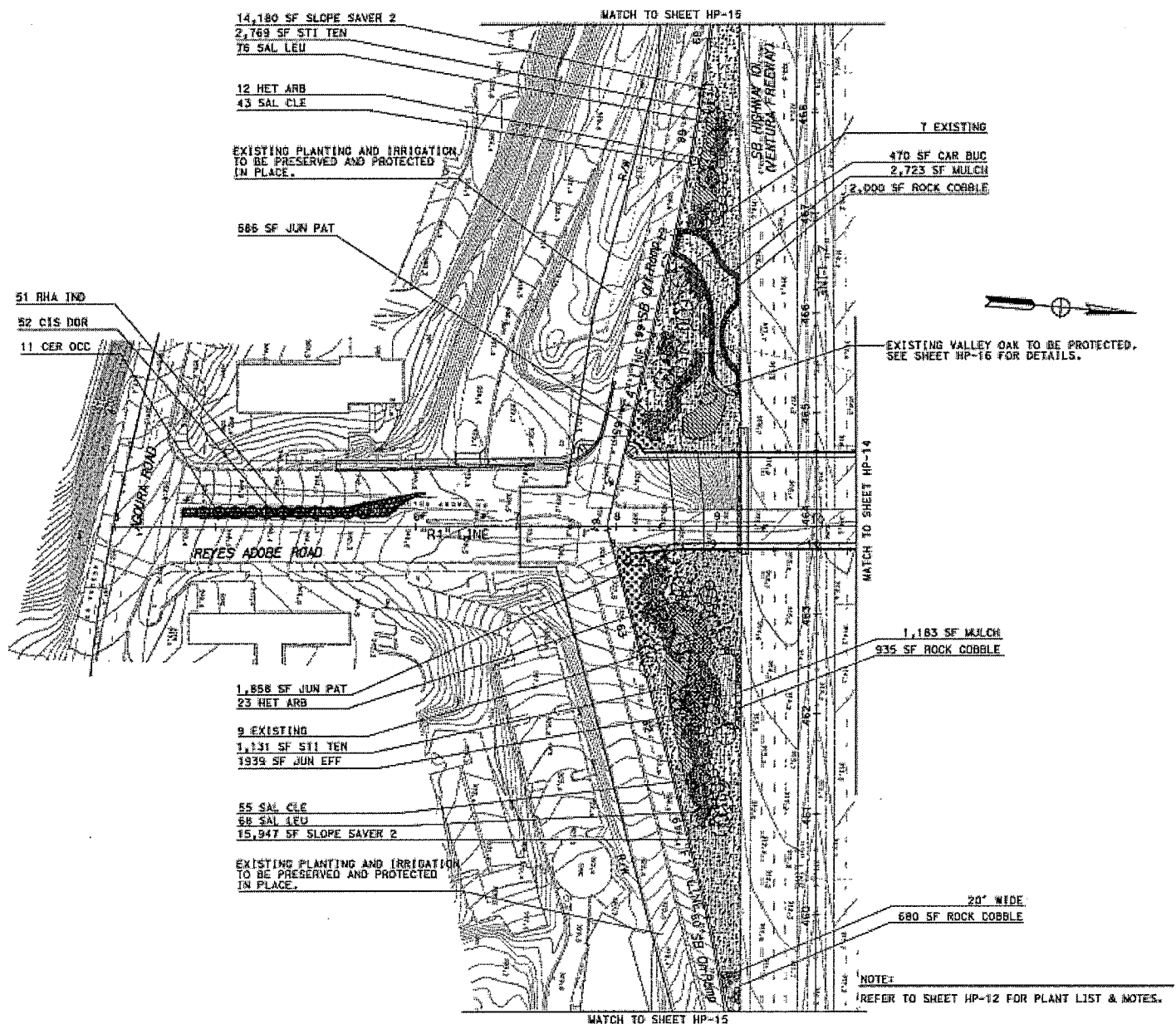
FOR PROJECT NOTES AND LIGHTING LEGEND SEE SHEET E-1 OF ELECTRICAL PLANS. THIS PLAN ACCURATE FOR ELECTRICAL WORK ONLY.

**STRUCTURE LIGHTING**  
NO SCALE

THIS PLAN ACCURATE FOR PAVEMENT DELINEATION ONLY.

DATE PLOTTED: 06/11/2008 10:51 AM PLOTTED BY: GUY, TIAO

DATE 06/08	REVISOR M.A.M.	REVISOR M.A.M.
	DATE 6/27/08	DATE 6/27/08
CALCULATED BY M.G.		
DESIGNED BY M.G.		
CHECKED BY M.A.		
DAVID TATSUIMI		



DIST	COUNTY	LOCATION CODE	POST MILES TOTAL PROJECT	SHEET NO.	TOTAL SHEETS
07	LA	101	36.1/36.3	71	108

6/27/08  
 REGISTERED LANDSCAPE ARCHITECT

6/30/08  
 PLANS APPROVAL DATE

CITY OF ANGELES HILLS  
 15001 LADYFAIR COURT  
 ANGELES HILLS, CALIFORNIA 91701

TATSUIMI AND PARTNERS  
 5 CORPORATE PARK, SUITE 200  
 IRVINE, CALIFORNIA, 92618-2100

STY INCORPORATED  
 10200 WILSHIRE BLVD., SUITE 3120  
 LOS ANGELES, CALIFORNIA 90047

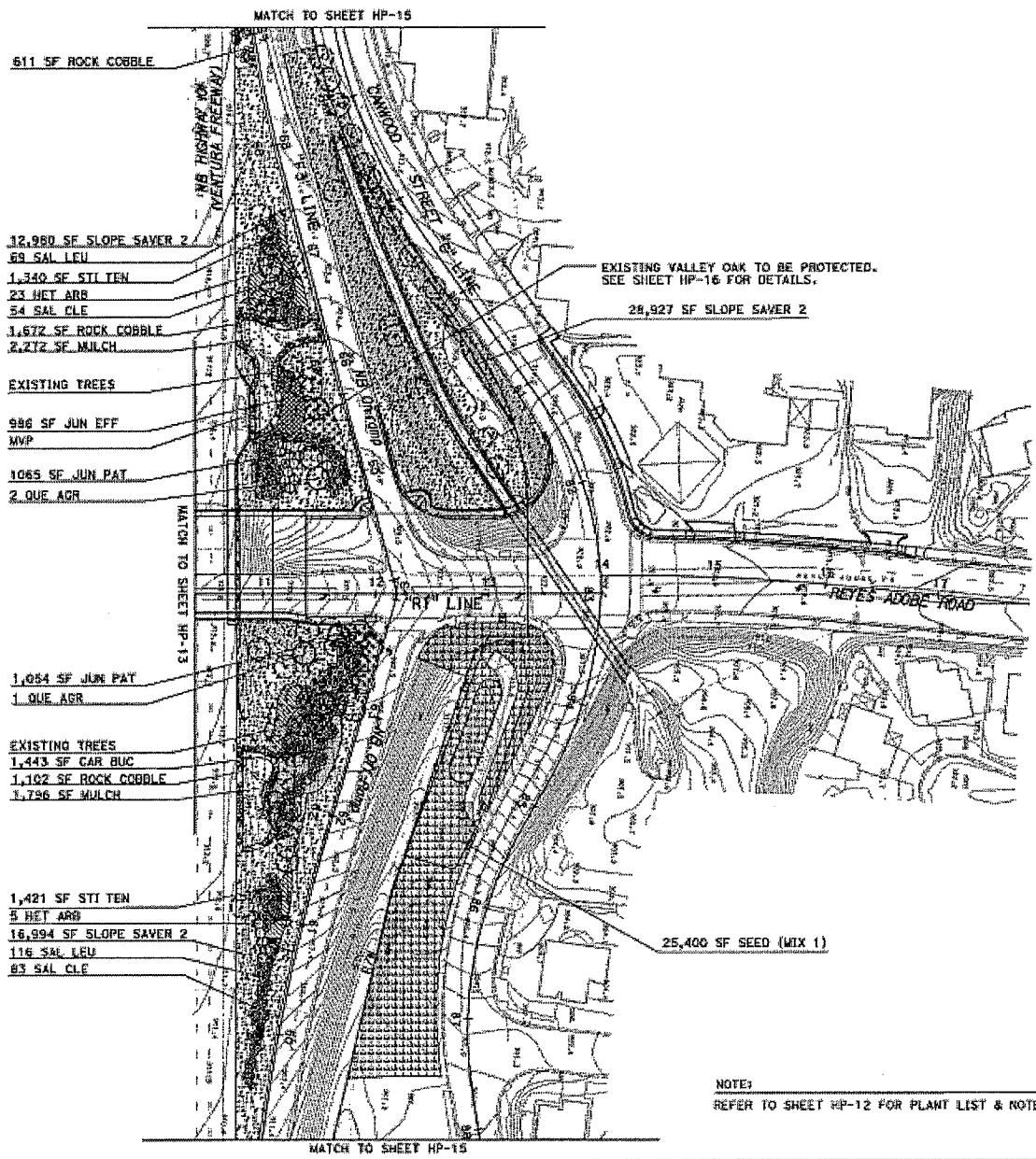
The State of California or the officers or agents shall not be responsible for the accuracy or completeness of the graphic content of this plan.

To print the drawings visit site at [www.cedex.com](http://www.cedex.com)

ALL DIMENSIONS ARE IN FEET  
 UNLESS OTHERWISE SHOWN

**PLANTING PLAN**  
 SCALE 1" = 50'

HP-13

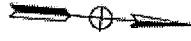


EXISTING VALLEY OAK TO BE PROTECTED.  
 SEE SHEET HP-16 FOR DETAILS.

28,927 SF SLOPE SAVER 2

25,400 SF SEED (MIX 1)

NOTE:  
 REFER TO SHEET HP-12 FOR PLANT LIST & NOTES.



DIST	COUNTY	LOCAL ORDER	POST BILLS TOTAL PROJECT	SHEET NO.	TOTAL SHEETS
07	LA	101	36.1/36.3	72	108

6/22/08  
 REGISTERED LANDSCAPE ARCHITECT

5/30/08  
 PLANS APPROVAL DATE

CITY OF AGoura HILLS  
 HODOL LANDFACE GROUP  
 HODOLA HILLS, CALIFORNIA 91301

TATSUMI AND PARTNERS  
 2 CORPORATE PARK, SUITE 200  
 DIVISIO, CALIFORNIA, 92626-3186

RTV INCORPORATED  
 1055 WEST 7TH STREET, SUITE 3120  
 LOS ANGELES, CALIFORNIA 90067

The State of California or its officers or agents shall not be responsible for the accuracy or completeness of electronic copies of these plans when printed.

To get to the CONTRACTS and BIDDING go to [WWW.DOT.CA.GOV](http://WWW.DOT.CA.GOV)

ALL DIMENSIONS ARE IN FEET  
 UNLESS OTHERWISE SHOWN  
**PLANTING PLAN**  
 SCALE 1" = 50'

HP-14



