

## Additional Changes to the Draft Agoura Hills General Plan of October 2009

ITEM.	SUGGESTED REVISION						
<b>Chapters 2-5 (Throughout)</b>							
<b>Change 1.</b> Throughout	For ease of reference, all individual implementation programs referenced in Chapters 2-5 are now coded with the relevant chapter. For example, Implementation Measure 1 in Table 6-2 Land Use and Community Form Implementation Program would now read, "LU-1.," as opposed to "1.," with the next reading, "LU-2.,". There would be no coding for Table 6-1. The coding for Table 6-3 would be "ED," the coding for Table 6-4 would be "HR," the coding for Table 6-5 would be "M," the coding for Table 6-6 would be "U," the coding for Table 6-7 would be "CS," the coding for Table 6-8 would be "NR," the coding for Table 6-9 would be "S," and the coding for Table 6-10 would be "N."						
<b>Chapter 2: Land Use and Community Development</b>							
<b>Change 2.</b> Page 2-13 Table LU-1	Table LU-1 is now corrected to include an accurate acreage figure for the Open Space/Park land use category as noted below: <table style="margin-left: 40px; border-collapse: collapse;"> <tr> <td style="padding-right: 20px;">Restricted Open Space</td> <td style="text-align: right;">1,000.5</td> </tr> <tr> <td>Restricted Open Space/Deed Restricted</td> <td style="text-align: right;">304.2</td> </tr> <tr> <td>Local Park</td> <td style="text-align: right;">73.5</td> </tr> </table>	Restricted Open Space	1,000.5	Restricted Open Space/Deed Restricted	304.2	Local Park	73.5
Restricted Open Space	1,000.5						
Restricted Open Space/Deed Restricted	304.2						
Local Park	73.5						
<b>Change 3.</b> Page 2-2	<p><b>LU-1.1 Building Intensity and Population Density.</b> Regulate the levels of building intensity and population density according to the standards and land use designations specified by the General Plan and Agoura Hills Municipal Code. Within these designations, cumulative development shall not exceed <del>8,139</del> housing units, <del>1,850,907</del> square feet of retail services, <del>3,341,448</del> square feet of business park/office uses, and <del>1,118,126</del> square feet of business park manufacturing uses. (<i>Imp LU-1, LU-2</i>)</p> <p>The original numbers were rounded off. These are the exact numbers.</p>						
<b>Change 4.</b> Page 2-22	<p><b>LU-8.4 Property Setbacks.</b> <del>Encourage variable setbacks</del> to enhance streetscape character and increase building separation. (<i>Imp LU-10, LU-12, LU-27</i>)</p> <p>This change is made for wording preference purposes. The content remains the same.</p>						

Deleted: 1,018.5

Deleted: 312.2

Deleted: 47.5

Deleted: 150

Deleted: 1

Deleted: 0

Deleted: 0

Deleted: 43

Deleted: 500

Deleted: 000

Deleted: Discourage uniform

**Additional Changes to the Draft Agoura Hills General Plan of October 2009**

ITEM.	SUGGESTED REVISION
<p><b>Change 5.</b> Page 2-42</p>	<p>The following change is made for wording preference purposes. The content remains the same.</p> <p><b>LU-30.1 Land Uses.</b> <u>Encourage development of uses predominantly serving community residents, such as office and retail service and commercial, including equestrian-supporting uses, and promote the re-use of underutilized properties. (Imp LU-10, LU-42)</u></p>
<p><b>Change 6.</b> Page 2-48</p>	<p>The following policy was inadvertently omitted from the document, and is now added:</p> <p><b>HR-3.3 Discovery of Remains.</b> <u>Require that if human remains or funerary objects are discovered and unearthed during any soil disturbing activity, the discoveries shall be treated in compliance with applicable state and federal laws, including notifying the County Coroner and the California Native American Heritage Commission, as appropriate, and following relevant procedures.</u></p>
<p><b>Change 7.</b> Page 3-25</p>	<p>This additional area was inadvertently omitted, and is now added to the list of existing sidewalks in the City in the last full paragraph on this page, which reads:</p> <p>The pedestrian facilities available within the City are comprised of sidewalks, crosswalks, and a foot bridge over the US-101. Sidewalks are generally available to link the residential communities to the arterial roads. Several sections of roadway do not currently have sidewalks available. These locations include: Driver Avenue between Easterly Road and Chesebro Road; Kanan Road, west side between Laro Drive and the northern City limits; portions of Agoura Road between the western City limits and Kanan Road; <u>Agoura Road east of Kanan Road to the eastern City limits; and Reyes Adobe Road north of Rainbow Hill Road to Lake Lindero Drive on the west side.</u></p>

**Deleted:** Limit

**Deleted:** to

**Formatted:** Font: Bold

**Deleted:** and



## Additional Changes to the Draft Agoura Hills General Plan of October 2009

ITEM	SUGGESTED REVISION
<b>Chapter 3: Infrastructure and Community Services</b>	
<p><b>Change 8.</b> Page 3-8</p>	<p>The following correction is now been made to the paragraph on page 3-8 that describes Chesebro Road. The speed limit was incorrectly referenced.</p> <ul style="list-style-type: none"> <li>■ <b>Chesebro Road</b>— Chesebro Road is a east-west collector street between Canwood Street and Palo Comado Canyon road north of the US-101 freeway and a north-south collector street between Agoura Road and the US-101 freeway eastbound on-ramp. One travel lane is provided in each direction. Sidewalk and street parking is provided on the north side of the road between Canwood Street and Palo Comado Canyon Road. Sidewalks and street parking are provided along both sides of the road south of Dorothy Drive and along the south side of the facility between Palo Comado Canyon road south of the US-101 freeway and Agoura Road. The speed limit is <u>35 miles per hour in some places, and 25 miles per hour in others, particularly for the segment that runs through Old Agoura.</u></li> </ul>
<b>Chapter 4: Natural Resources</b>	
<p><b>Change 9.</b> Page 4-7</p>	<p>The following roadway is now added to the list of road segments that have valuable scenic resources. This segment was originally intended to be included in the document.</p> <p>The following road segments are valuable scenic resources in the community that provide scenic views of the Santa Monica Mountains, including Ladyface Mountain.</p> <ol style="list-style-type: none"> <li>1. Reyes Adobe Road from Thousand Oaks Blvd. to Agoura Road</li> <li>2. Thousand Oaks Blvd. from westerly City limits to easterly City limits</li> <li>3. Agoura Road from westerly City limits to easterly City limits</li> <li>4. <u>Kanan Road from Agoura Road south to the City limits</u></li> </ol>
<p><b>Change 10.</b> Page 4-8</p>	<p>The following paragraph is now added to page 4-8 just before Goal NR-2. It is a description of the road segment that is Kanan Road from U.S. 101 south to the City limits, noted in Change 8.</p> <p><u>Kanan Road runs north/south through the City. The segment south of Agoura Road to the City limits provides excellent views of Ladyface Mountain. South of Agoura Road, it is currently a two-lane road through undeveloped areas with no landscaping. This segment serves as a scenic entry at the southerly City limits.</u></p>

**Deleted:**

**Formatted:** Font: Not Bold

**Formatted:** Font: Not Bold

**Deleted:** views of Ladyface Mountain. South of Agoura Road, it is currently a two-lane road through undeveloped areas, with no.

**Deleted:**

## Additional Changes to the Draft Agoura Hills General Plan of October 2009

ITEM	SUGGESTED REVISION
<p><b>Change 11.</b> Page 4-10</p>	<p>The following paragraph is now added to Subsection C. Biological Resources, page 4-10, in between the 2<sup>nd</sup> and 3<sup>rd</sup> paragraphs:</p> <p><u>The Liberty Canyon Wildlife Corridor is part of a larger habitat linkage between the Santa Monica Mountains, the Simi Hills, the Santa Susana Mountains, and the Sierra Madre Mountains. The corridor passes through the City in the southeastern corner, as shown on Figure NR-1.</u></p> <p>This additional text is added to provide greater context for identification of the corridor on Figure NR-1 and in Policy NR-4.12.</p>
<p><b>Change 12.</b> Page 4-14</p>	<p>The following text is now added to Policy NR-4.12 to clarify that in addition to the Liberty Canyon Wildlife Corridor being protected and maintained, areas adjacent to the corridor should be considered for protection, as appropriate. This is because, while the corridor boundaries have been identified, these boundaries do not prevent wildlife from passing through adjacent areas.</p> <p style="margin-left: 40px;">NR-4.12     <b>Wildlife Corridors.</b> Protect and maintain wildlife corridors, particularly the Liberty Canyon wildlife corridor, <u>and adjacent areas as appropriate,</u> to help the continued survival of wildlife. <i>(Imp NR-4)</i></p>
<p><b>Chapter 5: Community Safety</b></p>	
<p><b>Change 13.</b> Page 5-9</p>	<p>The following text is now added to Policy S-3.9 to further protect public natural resources while ensuring adequate wildland fire prevention. This change is made in response to the letter from the National Park Service, Santa Monica Mountains National Recreation Area, dated January 8, 2010.</p> <p style="margin-left: 40px;">S-3.9     <b>Fuel Modification.</b> Ensure that new development complies with fuel modification requirements of the Los Angeles County Fire Department while protecting natural resources and habitat to the extent feasible, <u>and encourage design that minimizes the need for fuel modification on public parklands, to the extent feasible.</u> <i>(Imp S-8, CS-30)</i></p>

Deleted: C  
Deleted: 25



## Additional Changes to the Draft Agoura Hills General Plan of October 2009

ITEM	SUGGESTED REVISION
<b>Chapter 6: Implementation Program</b>	
<b>Change 14.</b> Throughout	For ease of reference, all individual implementation programs are now coded with the relevant chapter. For example, Implementation Measure 1 in Table 6-2 Land Use and Community Form Implementation Program would now read, "LU-1.," as opposed to "1.," with the next reading, "LU-2.". There would be no coding for Table 6-1. The coding for Table 6-3 would be "ED," the coding for Table 6-4 would be "HR," the coding for Table 6-5 would be "M," the coding for Table 6-6 would be "U," the coding for Table 6-7 would be "CS," the coding for Table 6-8 would be "NR," the coding for Table 6-9 would be "S," and the coding for Table 6-10 would be "N."
<b>Change 15.</b> Page 6-4	The following text is added to Implementation Measure LU-7 in Table 6-2 to more accurately explain the level of improvements that would be required:  <u>LU-7.</u> The City shall continue to require developers to construct, <u>upgrade or repair</u> improvements to the public right-of-way along their site frontage, as appropriate, and require developers to construct other infrastructure improvements that are necessary to serve the developments from the public right-of-way to the project site, as well as other improvements identified as mitigation measures for project impacts under the California Environmental Quality Act (CEQA).
<b>Change 16.</b> Page 6-5	The following text is added to Implementation Measure LU-8 in Table 6-5 to reflect the possibility of the City's participation in regional efforts:  <u>LU-8.</u> The City shall explore the feasibility of establishing a fee system for recovering costs of providing sewer, storm water, and other necessary infrastructure to new development, <u>or may participate in applicable regional or Countywide programs at the City's discretion.</u>
<b>Change 17.</b> Page 6-5	The following text in Implementation Measure LU-10 in Table 6-2 is changed to more accurately describe the City's action:  <u>LU-10.</u> The City shall continue to <u>enforce the Municipal Code.</u>
<b>Change 18.</b> Page 6-6	The following text in Implementation Measure LU-11 in Table 6-2 is changed to more accurately describe the City's action:  <u>LU-11.</u> The City shall continue to <u>enforce the City's Hillside and Significant Ecological Areas Ordinance.</u>

Deleted: implement

Deleted: implement

**Additional Changes to the Draft Agoura Hills General Plan of October 2009**

ITEM	SUGGESTED REVISION
<p><b>Change 19.</b> Page 6-15</p>	<p>The following text change in Implementation Measure LU-42 is included to be consistent with the wording change in Policy LU-30.1:</p> <p><u>LU-42.</u> The City shall amend the Old Agoura Design Overlay District (OA) in the Zoning Ordinance to differentiate Subarea 11, as shown on Figure LU-3, from the remaining commercial areas of the district. Allowed uses in this special area shall be identified, and those primarily serving community residents, including smaller scale office and retail commercial, and emphasizing equestrian-oriented uses, shall be encouraged.</p>
<p><b>Change 20.</b> Page 6-18</p>	<p>The following implementation measure was inadvertently omitted from the document. This text is now added in Table 6-4:</p> <p><u>HR-8</u> During project review and entitlement, the City shall require as a condition of project approval that if human remains or funerary objects are discovered during earthwork activities, applicable federal and state laws shall be adhered to, including ceasing subsurface work until the County Coroner has made the necessary findings as to origin and disposition of the human remains, and if the finds are of Native American descent, the California Native American Heritage Commission is notified, and proper procedures followed.</p> <p><u>Implements Which Policy(ies):</u> HR-3.3</p> <p><u>Responsible Department(s):</u> Planning and Community Development</p> <p><u>Supporting Department(s):</u> N/A</p>
<p><b>Change 21.</b> Page 6-42</p>	<p>The following text is added to Implementation Measure U-53 in Table 6-6 to further clarify the City's intent:</p> <p><u>U-53.</u> The City shall continue to coordinate with telecommunications providers to ensure that City residents, businesses and institutions have access to state of the art technology resources and adequate coverage, while ensuring the appropriate design and location of such facilities, pursuant to federal and state law.</p>
<p><b>Change 22.</b> Page 6-60</p>	<p>The following are changes to Implementation Measure NR-26 in Table 6-8 to reference legal requirements:</p> <p><u>NR-26.</u> The City shall ensure that any City plans prepared related to climate change and greenhouse gas reduction are consistent with relevant regional plans addressing similar issues, and that the City coordinates and collaborates, as legally required, with other agencies and organizations to meet climate change and greenhouse gas reduction goals, required by the state and federal government.</p>

**Deleted:** shall be limited to

**Formatted:** Body, Indent: Left: 0", Hanging: 0.61", Tabs: Not at 0.75"

**Deleted:** necessary



## Additional Changes to the Draft Agoura Hills General Plan of October 2009

ITEM.	SUGGESTED REVISION
<p><b>Change 23.</b></p> <p>Page 6-17</p>	<p>The following Implementation Measure HR-1 is now changed to read:</p> <p style="padding-left: 40px;"><u>HR-1.</u>The City shall consider creating a program to identify historic resources, including recommendations to promote and protect such resources to the extent feasible.</p> <p>The elimination of the phrase “of local significance” allows the City to also consider a program to identify historic resources that may qualify for state or federal designation as well.</p>

**Formatted:** Indent: Left: 0.25", Hanging: 0.43"

**Formatted:** Bullets and Numbering

**Deleted:** of local significance

### Figures - see attached figures with edits

Figure M-1.	Driver Avenue is now shown as a “collector” road classification. It was previously incorrectly shown as an “arterial.”
Figure LU-1.	The legend reference to “Santa Monica Mountains National Recreation Area” is now removed, as is the corresponding shading on the map. However, the general reference to the “Santa Monica Mountains National Recreation Area” in the northeastern corner remains, and this same reference is added along the southern edge of the map. These changes are in response to the letter from the National Park Service, Santa Monica Mountains National Recreation Area (SMMNRA), dated January 8, 2010 regarding the SMMNRA boundaries.
Figure LU-2.	<p>The triangular portion of the Agoura High School site in the northeastern corner is now shown as an “Open Space-Restricted (OS-R)” designation. It was previously incorrectly identified as “Public Facility (PF).”</p> <p>The group of parcels in the southeastern portion of the City, bound by Agoura Road to the south and west, U.S. Highway 101 to the north, and Liberty Canyon Road to the east, is now shown as a “Business Park - Manufacturing (BP-M)” designation. It was previously incorrectly identified as “Open Space - Restricted (OS-R).”</p> <p>The legend reference to “Residential Very Low Density” should be corrected to show the correct density as “0.2-1.0 du/ac,” not “&lt;2 du/ac.”</p> <p>The legend reference to “Santa Monica Mountains National Recreation Area” is now removed, as is the corresponding shading on the map. However, the general reference to the “Santa Monica Mountains National Recreation Area” in the northeastern corner remains, and this same reference is added along the southern edge of the map. These changes are in response to a letter from the National Park Service, Santa Monica Mountains National Recreation Area (SMMNRA), dated January 8, 2010 regarding the SMMNRA boundaries.</p>

## Additional Changes to the Draft Agoura Hills General Plan of October 2009

ITEM.	SUGGESTED REVISION
Figure LU-3.	<p>The western boundary of Subarea 5 is now correctly shown to be east of the County Animal Shelter property. It was previously incorrectly shown to include this property.</p> <p>The triangular portion of the Agoura High School site in the northeastern corner is now shown as an "Open Space-Restricted (OS-R)" designation. It was previously incorrectly identified as "Public Facility (PF)."</p> <p>The group of parcels in the southeastern portion of the City, bound by Agoura Road to the south and west, U.S. Highway 101 to the north, and Liberty Canyon Road to the east, is now shown as a "Business Park - Manufacturing (BP-M)" designation. It was previously incorrectly identified as "Open Space - Restricted (OS-R)."</p> <p>The legend reference to "Residential Very Low Density" should be corrected to show the correct density as "0.2-1.0 du/ac," not "&lt;2 du/ac."</p> <p>The legend reference to "Santa Monica Mountains National Recreation Area" is now removed, as is the corresponding shading on the map. However, the general reference to the "Santa Monica Mountains National Recreation Area" in the northeastern corner remains, and this same reference is added along the southern edge of the map. These changes are in response to the letter from the National Park Service, Santa Monica Mountains National Recreation Area (SMMNRA), dated January 8, 2010, regarding the SMMNRA boundaries.</p>
Figure NR-1	<p>Figure NR-1 has been revised in response to a letter from the National Park Service, Santa Monica Mountains National Recreation Area (SMMNRA), dated January 8, 2010, regarding expanding the boundary of the Liberty Canyon wildlife corridor. The limits of the corridor have been widened as the corridor passes over the freeway and just south of the freeway. Per SMMNRA request, the boundary has been extended on the western side, and partially on the eastern side, with the exception of the existing developed area on the east.</p> <p>The legend reference to "Santa Monica Mountains National Recreation Area" is now removed, as is the corresponding shading on the map. However, the general reference to the "Santa Monica Mountains National Recreation Area" in the northeastern corner remains, and this same reference is added along the southern edge of the map. These changes are in response to the letter from the National Park Service, Santa Monica Mountains National Recreation Area (SMMNRA), dated January 8, 2010, regarding the SMMNRA boundaries.</p>
Figure CS-1	<p>The general reference to the "Santa Monica Mountains National Recreation Area" in the northeastern corner has also been added along the southern edge of the map. These changes are in response to the letter from the National Park Service, Santa Monica Mountains National Recreation Area (SMMNRA), dated January 8, 2010, regarding the SMMNRA boundaries.</p>









## Additional Changes to the Draft Agoura Hills General Plan of October 2009

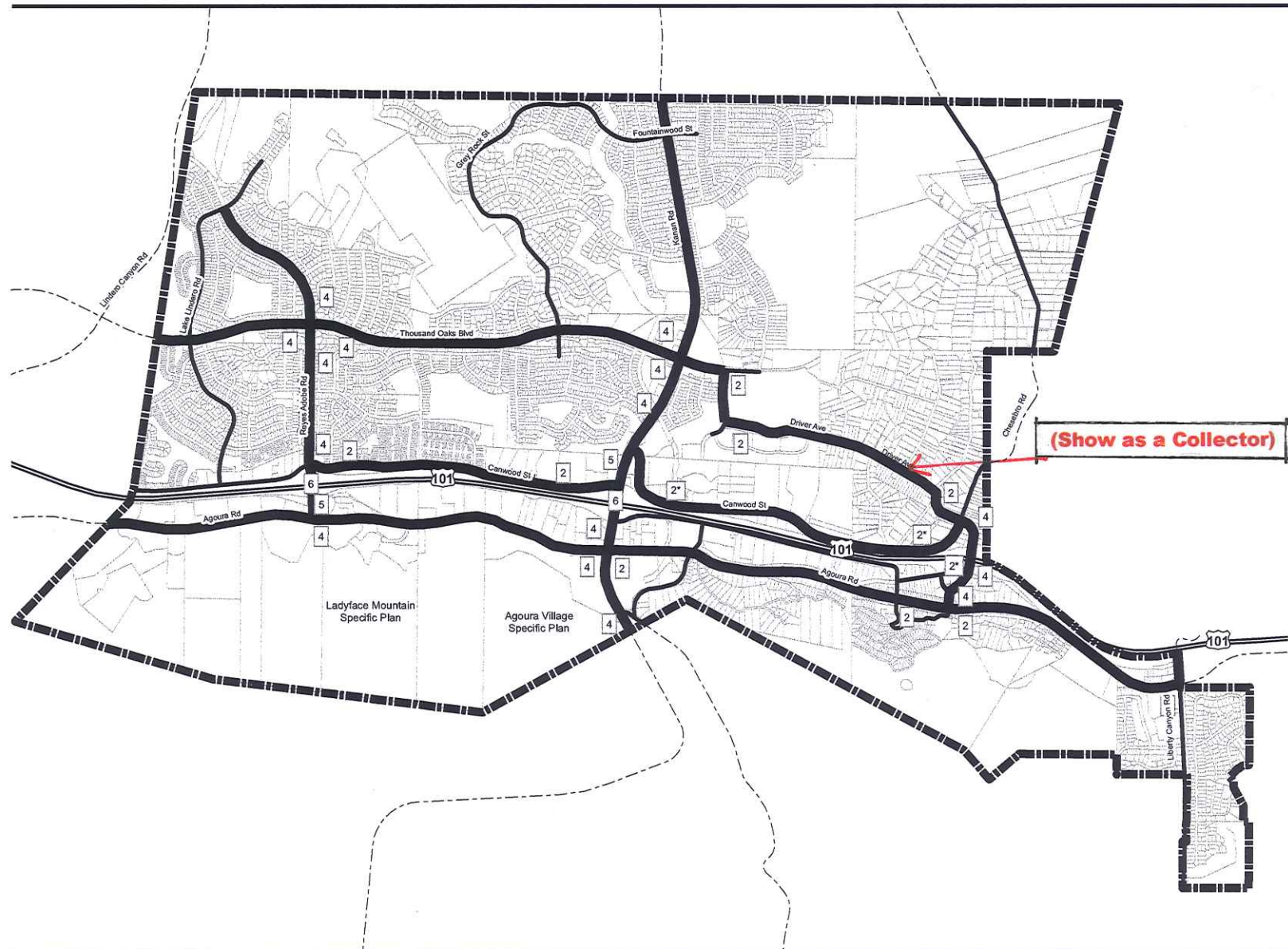
ITEM	SUGGESTED REVISION
Figure CS-2	The legend reference to “Santa Monica Mountains National Recreation Area” is now removed, as is the corresponding shading on the map. However, the general reference to the “Santa Monica Mountains National Recreation Area” in the northeastern corner remains, and this same reference is added along the southern edge of the map. These changes are in response to the letter from the National Park Service, Santa Monica Mountains National Recreation Area (SMMNRA), dated January 8, 2010, regarding the SMMNRA boundaries.
Figure CS-3	Figure CS-3 has been revised in response to the letter from the National Park Service, Santa Monica Mountains National Recreation Area (SMMNRA), dated January 8, 2010. The shaded areas indicating SMMNRA areas have been removed for clarity, the purpose of the figure being to show the trail network. Symbols on some of the trails regarding type of use and status have been corrected pursuant to the SMMNRA letter.
Figure NR-2	The map shading referring to “Santa Monica Mountains National Recreation Area” is now removed. However, the general reference to the “Santa Monica Mountains National Recreation Area” in the northeastern corner remains, and this same reference is added along the southern edge of the map. These changes are in response to a letter from the National Park Service, Santa Monica Mountains National Recreation Area (SMMNRA), dated January 8, 2010, regarding the SMMNRA boundaries.
Figure S-1	<p>The general reference to the “Santa Monica Mountains National Recreation Area” in the northeastern corner has also been added along the southern edge of the map. These changes are in response to the letter from the National Park Service, Santa Monica Mountains National Recreation Area (SMMNRA), dated January 8, 2010, regarding the SMMNRA boundaries.</p> <p>The reference in the legend to Special Flood Hazard is revised as follows: “Inundated by 100-Year Flood” is replaced with “1% Annual Chance Flood.” This is to reflect new terminology, as noted in the October 22, 2009 memo from the Ventura County Watershed Protection District.</p>
Figure N-1	The general reference to the “Santa Monica Mountains National Recreation Area” in the northeastern corner has also been added along the southern edge of the map. These changes are in response to the letter from the National Park Service, Santa Monica Mountains National Recreation Area (SMMNRA), dated January 8, 2010, regarding the SMMNRA boundaries.
Figure N-2	The general reference to the “Santa Monica Mountains National Recreation Area” in the northeastern corner has also been added along the southern edge of the map. These changes are in response to the letter from the National Park Service, Santa Monica Mountains National Recreation Area (SMMNRA), dated January 8, 2010, regarding the SMMNRA boundaries.

**CITY of AGOURA HILLS**  
General Plan Update

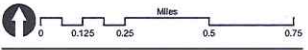
**CIRCULATION PLAN AND STREET CLASSIFICATION**

**Legend**

-  City Limits
-  # Number of Lanes
- Road Classification**
-  Freeway
-  Arterial
-  Collector
-  2\* Two lanes plus continuous left-turn lane



October 1, 2009  
M1\_Circulation Plan Agoura Hills Template.mxd



**FIGURE M-1**



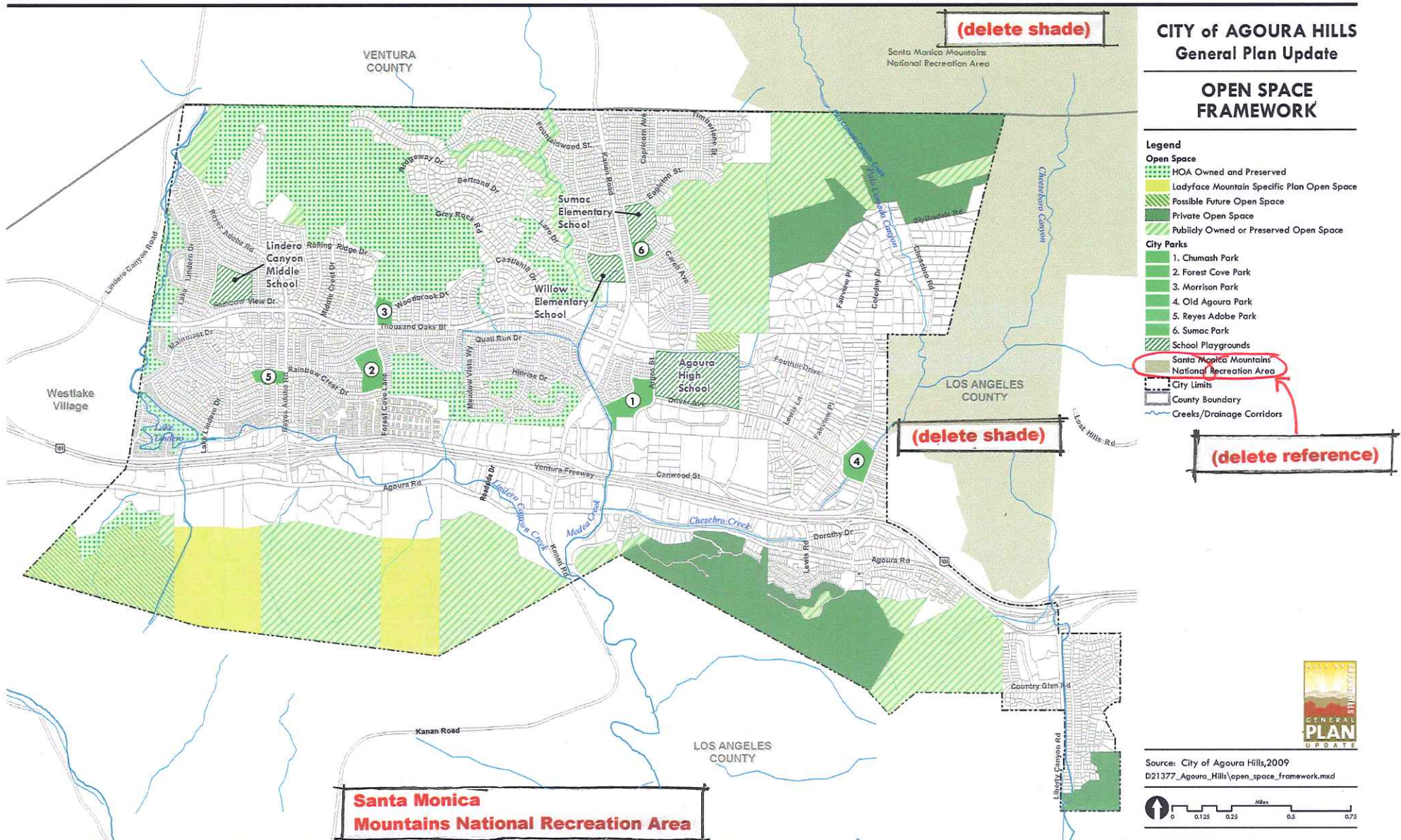
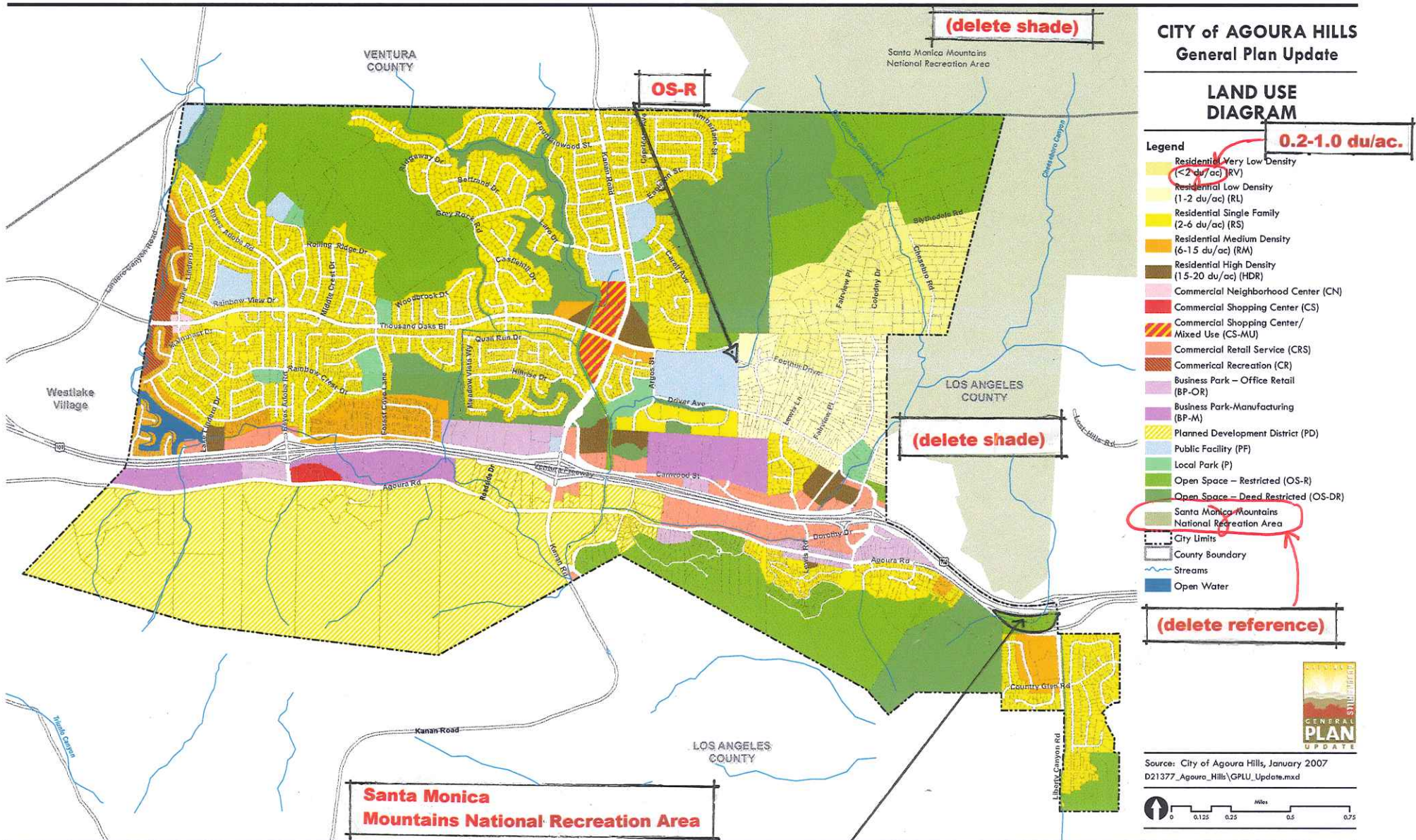


Figure LU-1





**CITY OF AGOURA HILLS  
General Plan Update**

**LAND USE  
DIAGRAM**

- Legend**
- Residential Very Low Density (<2 du/ac) (RV)
  - Residential Low Density (1-2 du/ac) (RL)
  - Residential Single Family (2-6 du/ac) (RS)
  - Residential Medium Density (6-15 du/ac) (RM)
  - Residential High Density (15-20 du/ac) (HR)
  - Commercial Neighborhood Center (CN)
  - Commercial Shopping Center/ Mixed Use (CS-MU)
  - Commercial Retail Service (CRS)
  - Commercial Recreation (CR)
  - Business Park – Office Retail (BP-OR)
  - Business Park-Manufacturing (BP-M)
  - Planned Development District (PD)
  - Public Facility (PF)
  - Local Park (P)
  - Open Space – Restricted (OS-R)
  - Open Space – Deed Restricted (OS-DR)
  - Santa Monica Mountains National Recreation Area
  - City Limits
  - County Boundary
  - Streams
  - Open Water

**0.2-1.0 du/ac.**

**(delete shade)**

**(delete shade)**

**(delete reference)**

**Santa Monica  
Mountains National Recreation Area**

**BP-M**

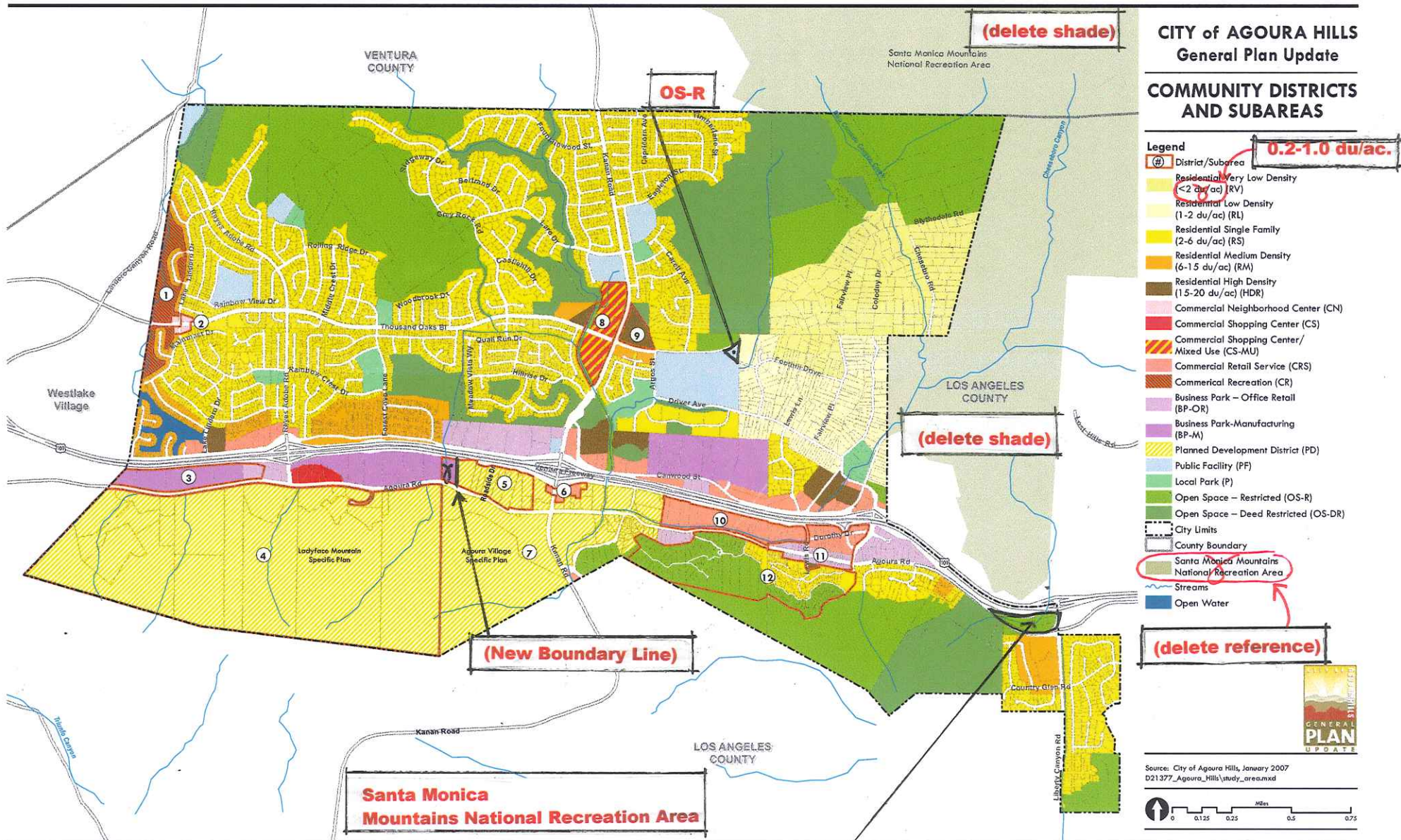
Source: City of Agoura Hills, January 2007  
D21377\_Agoura\_Hills\GPLU\_Update.mxd

0 0.125 0.25 0.5 0.75 Miles



**Figure LU-2**







**CITY of AGOURA HILLS  
General Plan Update**

**HABITATS and  
SENSITIVE SPECIES**

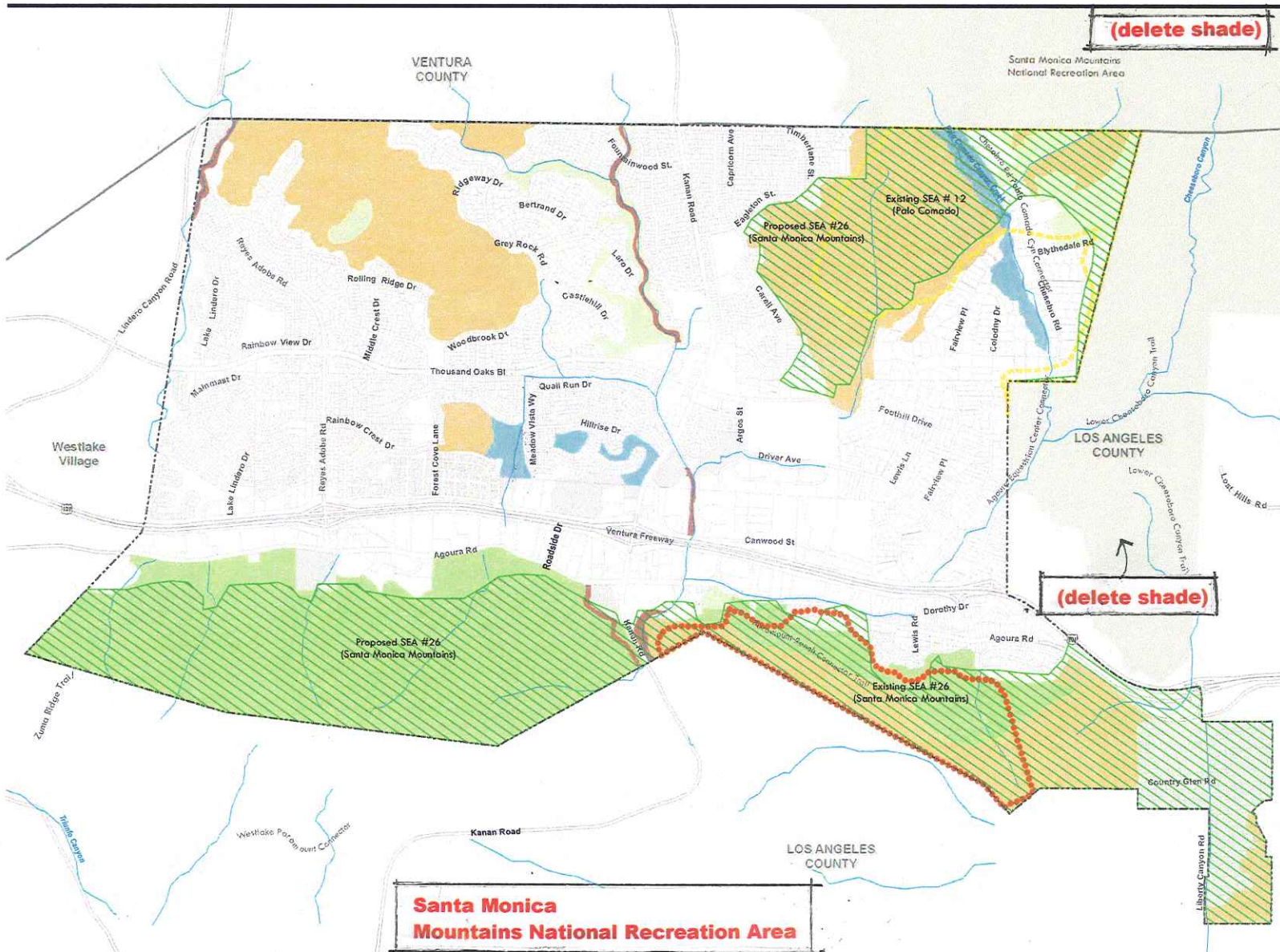
**Legend**

**Vegetation Community**

- Chaparral
- Coastal Sage Scrub
- Developed
- Grassland
- Oak Woodland
- Riparian Woodland

**Significant Ecological Areas**

- Existing SEA # 12 (Palo Comado)
- Existing SEA #26 (Santa Monica Mountains)
- Proposed SEA #26 (Santa Monica Mountains)
- City Limits
- County Boundary
- Streams



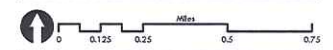
**Santa Monica  
Mountains National Recreation Area**

**(delete shade)**

**(delete shade)**



Source: City of Agoura Hills General Plan 2003;  
Agoura Village Specific Plan EIR; LA County Dept.  
Regional Planning, 2009.  
D21377\_Agoura\_Hills\Veg\_Communities\_CNDB.mxd



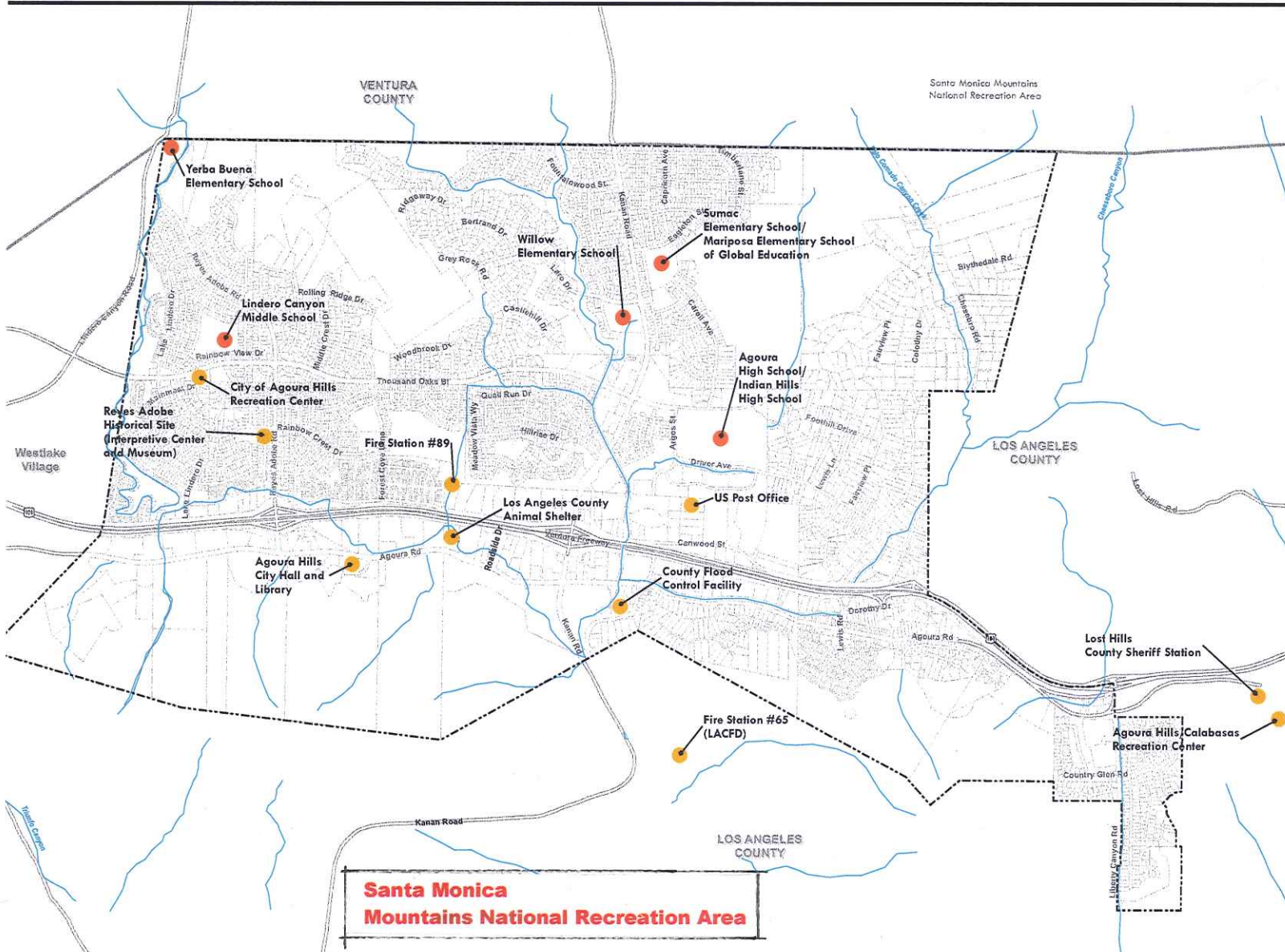
**Figure NR-2**



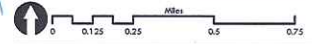
**CITY of AGOURA HILLS  
General Plan Update**

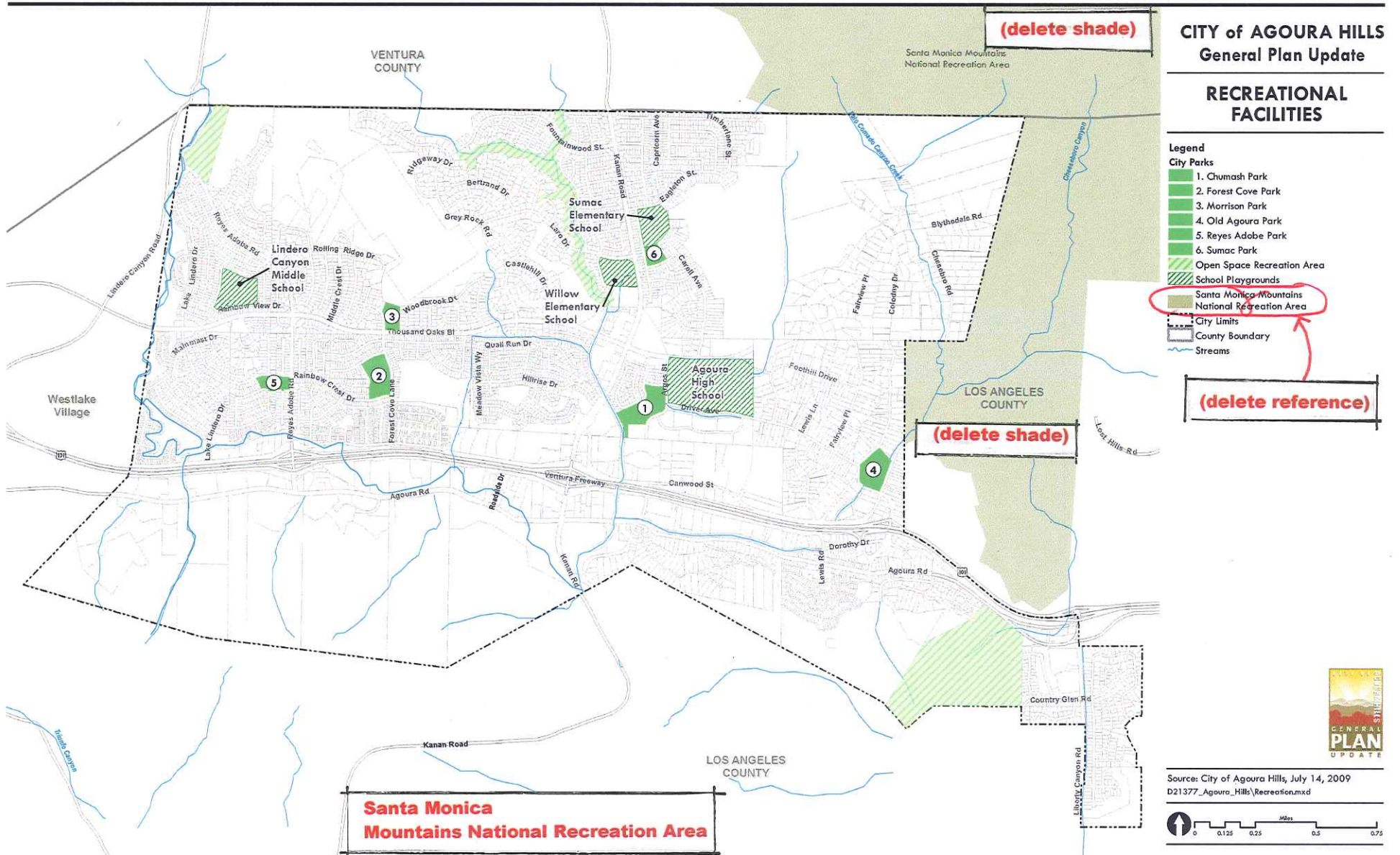
**COMMUNITY FACILITIES**

- Legend**
- Schools
  - Community Facilities
  - City Limits
  - Parcel Boundaries
  - County Boundary
  - ~ Streams

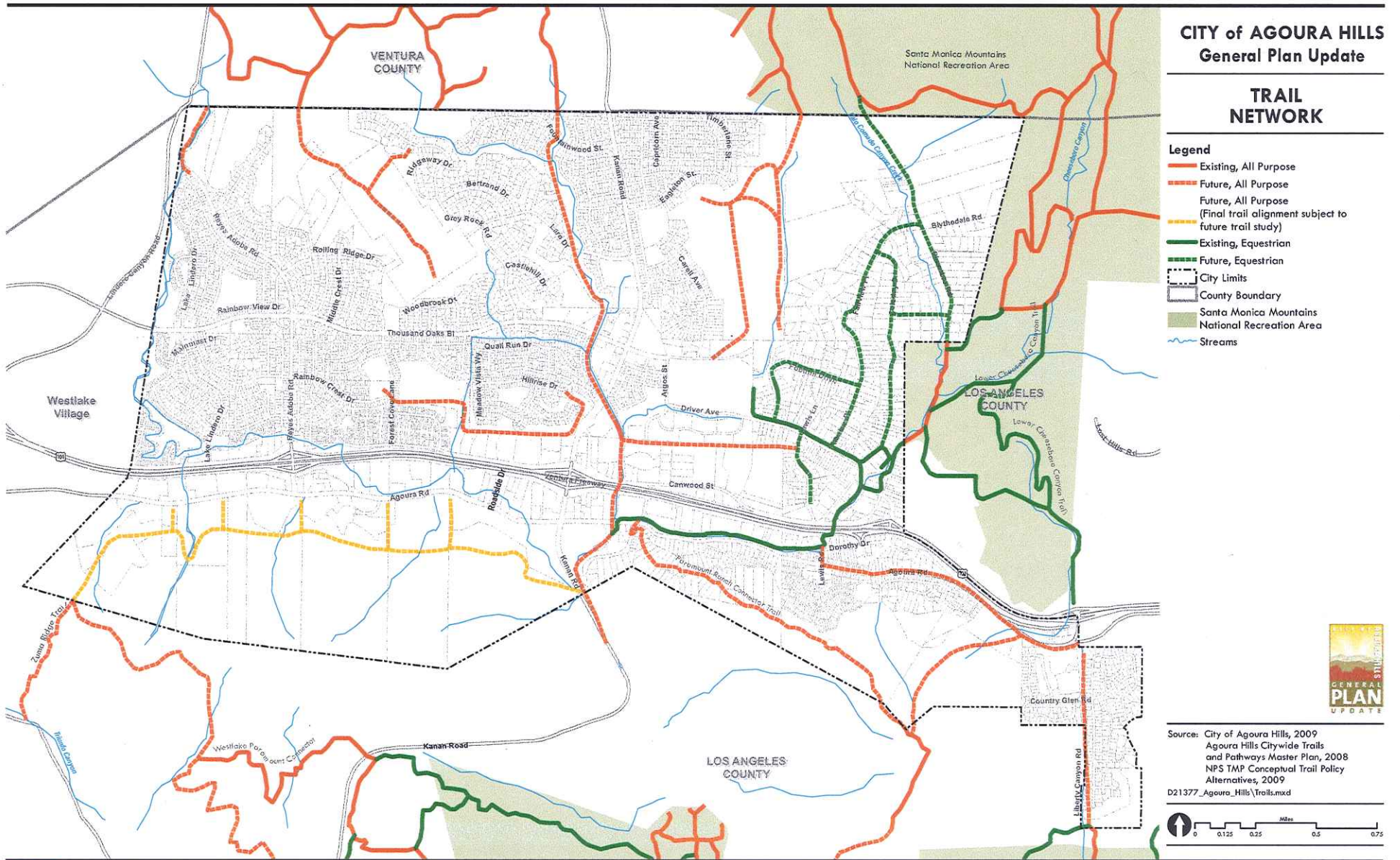


Source: City of Agoura Hills, January 2007  
D21377\_Agoura\_Hills\_Community\_Facilities.mxd









**(Figure CS-3 of the General Plan Shall Be Like FEIR Figure 4.12-2, Attached)**

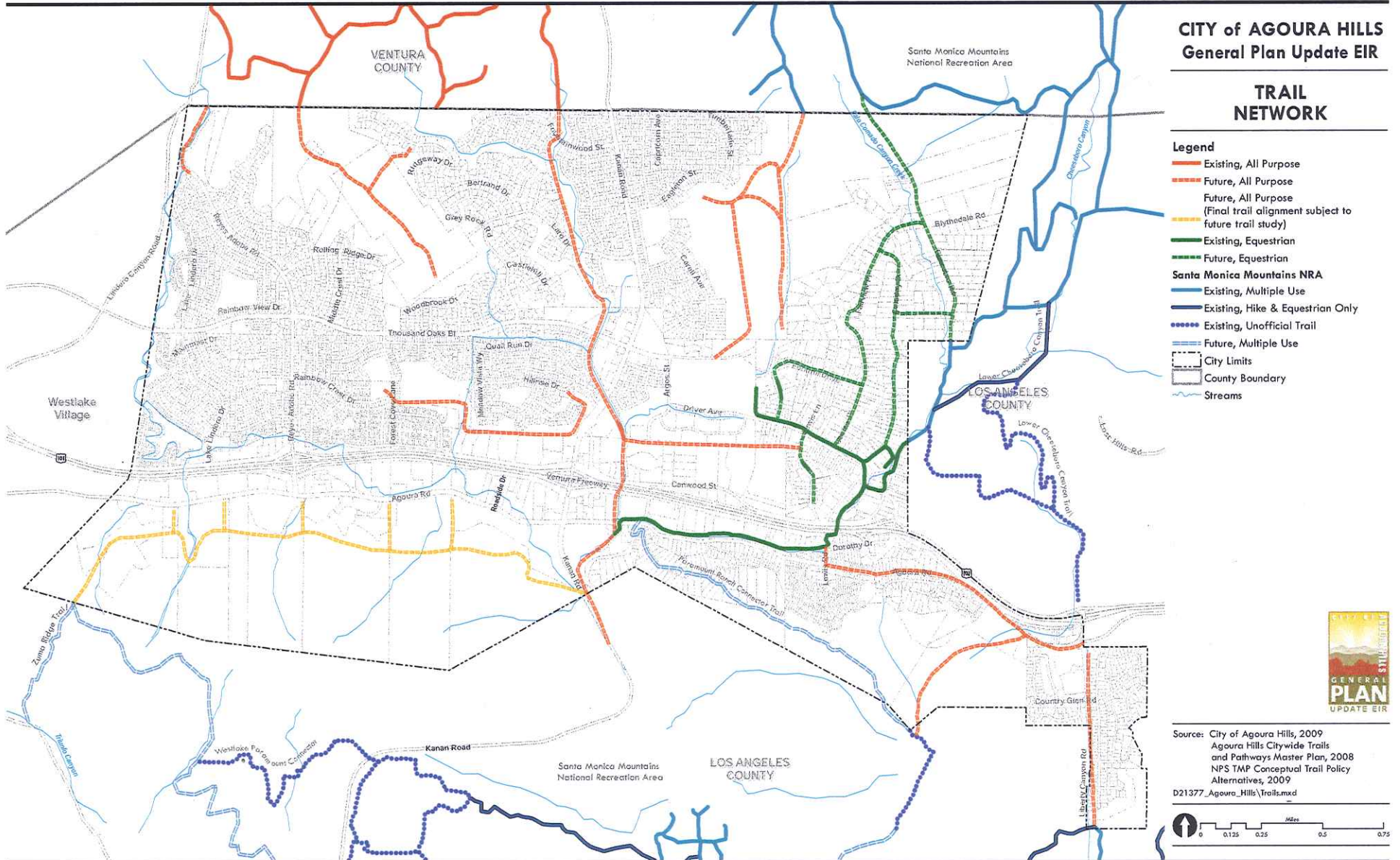


**CITY of AGOURA HILLS  
General Plan Update EIR**

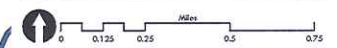
**TRAIL NETWORK**

**Legend**

- Existing, All Purpose
- - - Future, All Purpose
- - - Future, All Purpose  
(Final trail alignment subject to future trail study)
- Existing, Equestrian
- - - Future, Equestrian
- Santa Monica Mountains NRA**
- Existing, Multiple Use
- - - Existing, Hike & Equestrian Only
- Existing, Unofficial Trail
- - - Future, Multiple Use
- City Limits
- County Boundary
- ~ Streams



Source: City of Agoura Hills, 2009  
 Agoura Hills Citywide Trails  
 and Pathways Master Plan, 2008  
 NPS TMP Conceptual Trail Policy  
 Alternatives, 2009  
 D21377\_Agoura\_Hills\_Trails.mxd



**(Figure CS-3 of the General Plan Shall Be Like This FEIR Figure)**

**Figure 4.12-2**



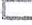




# CITY of AGOURA HILLS General Plan Update

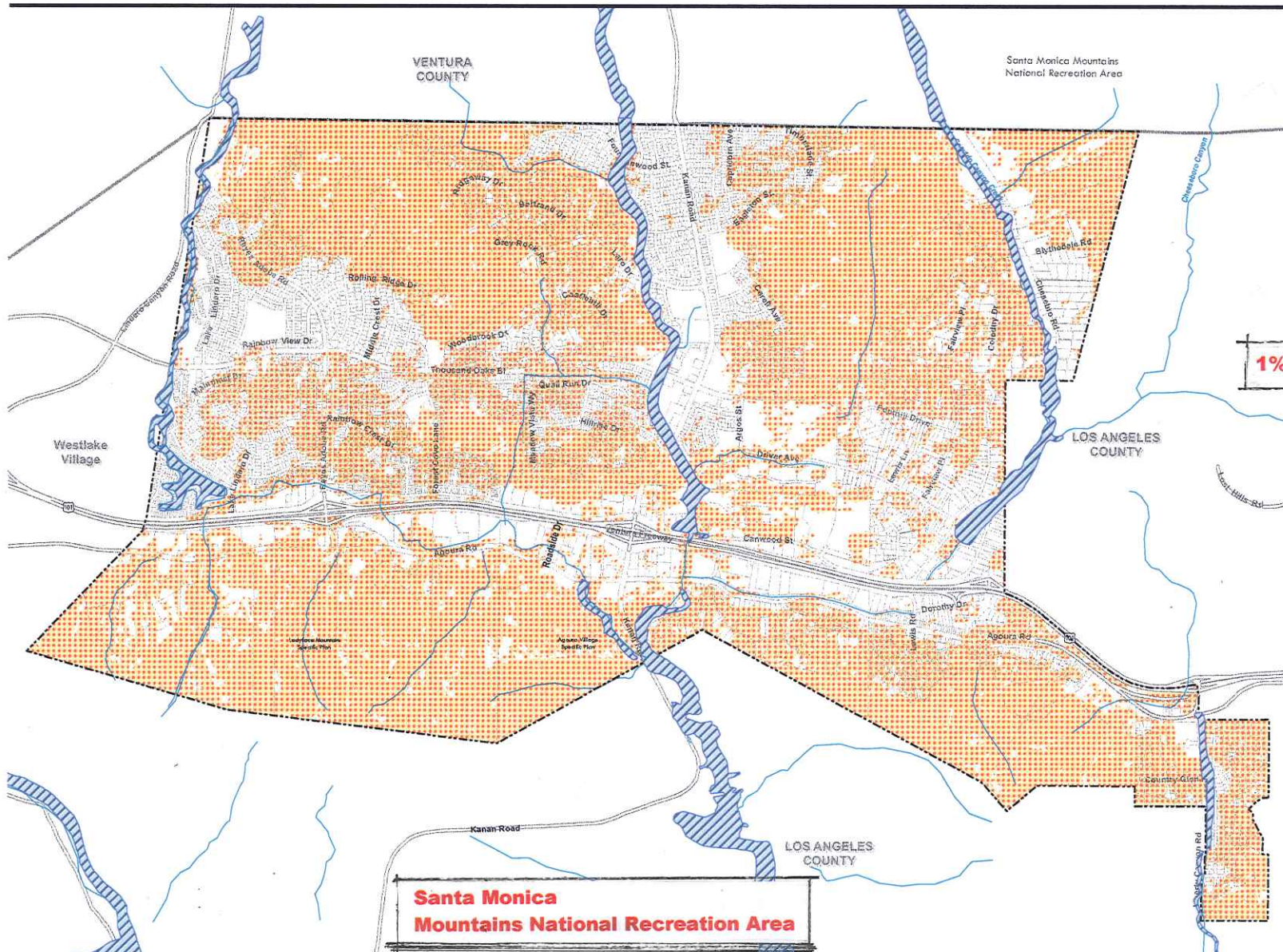
## HAZARDS

### Legend

Entire City is in a Very High Fire Hazard Severity Zone

-  Special Flood Hazard Area ~~inundated by 100-Year Flood~~ (Zone A - No base flood elevations determined)
-  Slopes > 10% Note: See Policy S-2.2
-  City Limits
-  County Boundary
-  Streams

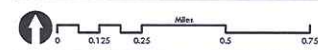
**1% Annual Chance of Flood**



**Santa Monica  
Mountains National Recreation Area**



Source: City of Agoura Hills Fire Hazard, 2009; FEMA Q3; USGS Seamless Data Distribution System, 2009; D21377\_Agoura\_Hills/Public Safety Management.mxd





**CITY of AGOURA HILLS  
General Plan Update**

**NOISE CONTOURS-  
EXISTING**

**Legend**

**Existing Roadway Noise Contours**

70 CNEL

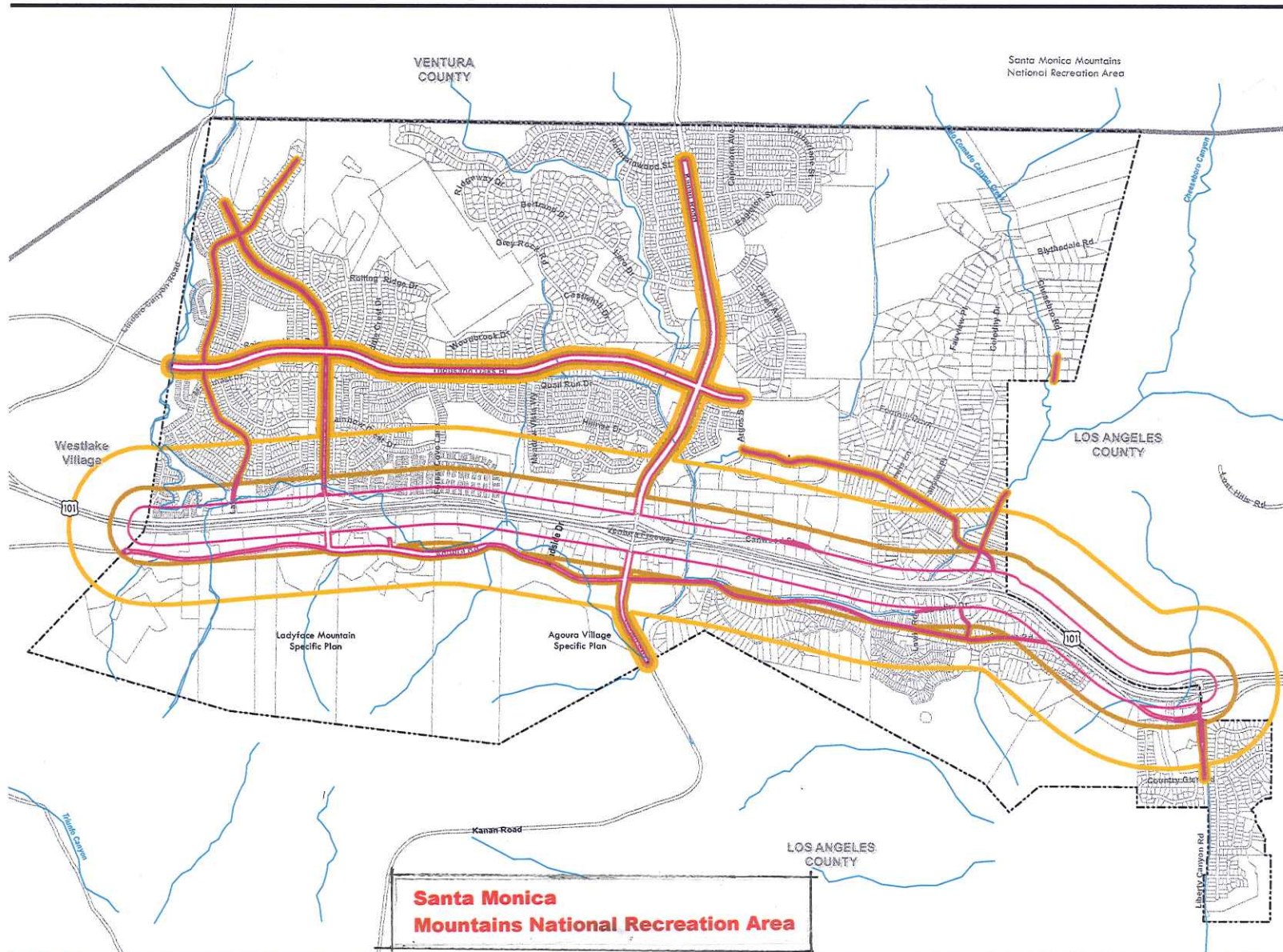
65 CNEL

60 CNEL

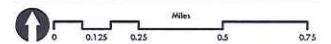
City Limits

Parcel Boundaries

Streams



Source: Fehr & Peers, June 2009  
D21377\_Agoura\_Hills\noise.mxd





**CITY of AGOURA HILLS  
General Plan Update**

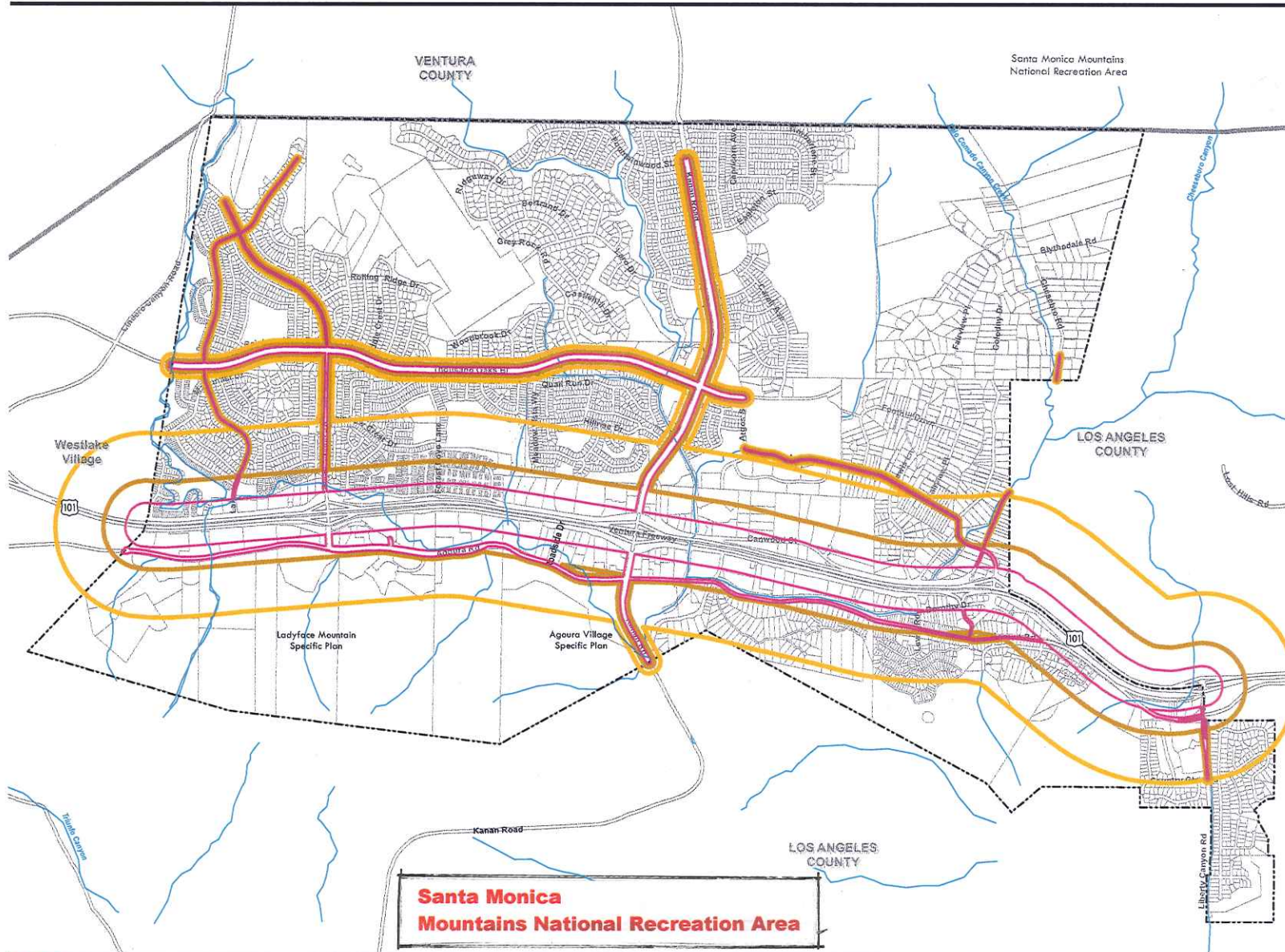
**NOISE CONTOURS-  
FUTURE**

**Legend**

**Future Roadway Noise Contours**

- 70 CNEL
- 65 CNEL
- 60 CNEL

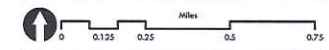
- City Limits
- Parcel Boundaries
- Streams



**Santa Monica  
Mountains National Recreation Area**



Source: Fehr & Peers, June 2009  
D21377\_Agoura\_Hills\noise.mxd





**CITY of AGOURA HILLS  
General Plan Update**

**OPEN SPACE  
RESOURCES**

- Legend**
- Wildlife Corridor
  - Open Space**
    - HOA Owned and Preserved
    - Ladyface Mountain Specific Plan Open Space
    - Possible Future Open Space
    - Private Open Space
    - Publicly Owned or Preserved Open Space
  - City Parks**
    - 1. Chumash Park
    - 2. Forest Cove Park
    - 3. Morrison Park
    - 4. Old Agoura Park
    - 5. Reyes Adobe Park
    - 6. Sumac Park
  - School Playgrounds
  - Santa Monica Mountains National Recreation Area
  - City Limits
  - County Boundary
  - Primary Ridgeline
  - Secondary Ridgeline
  - Creeks/Drainage Corridors

**(delete shade)**

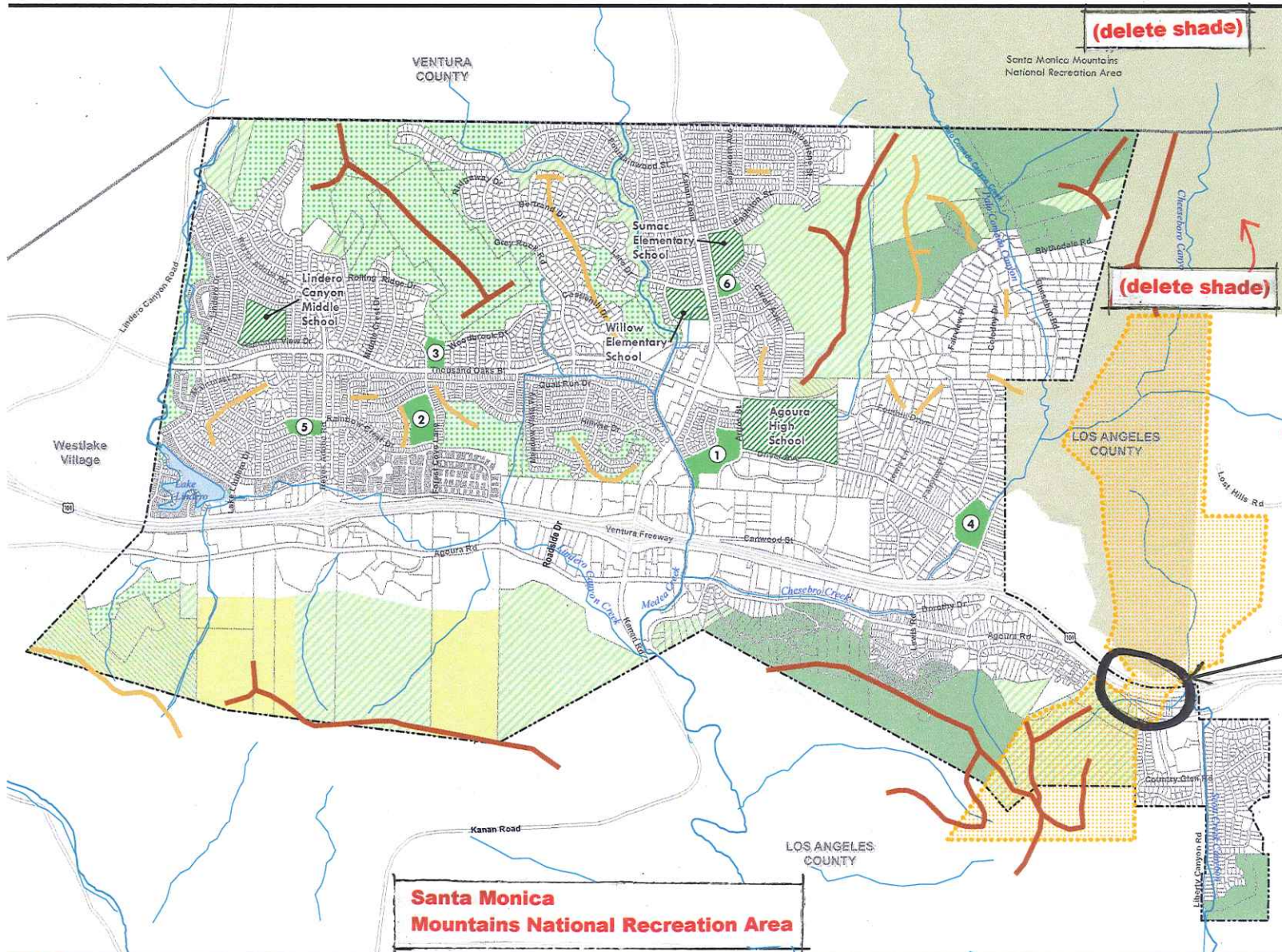
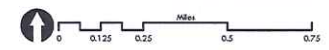
**(delete shade)**

**(delete reference)**

**(See attached detail map)**

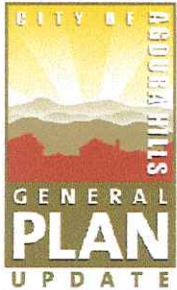
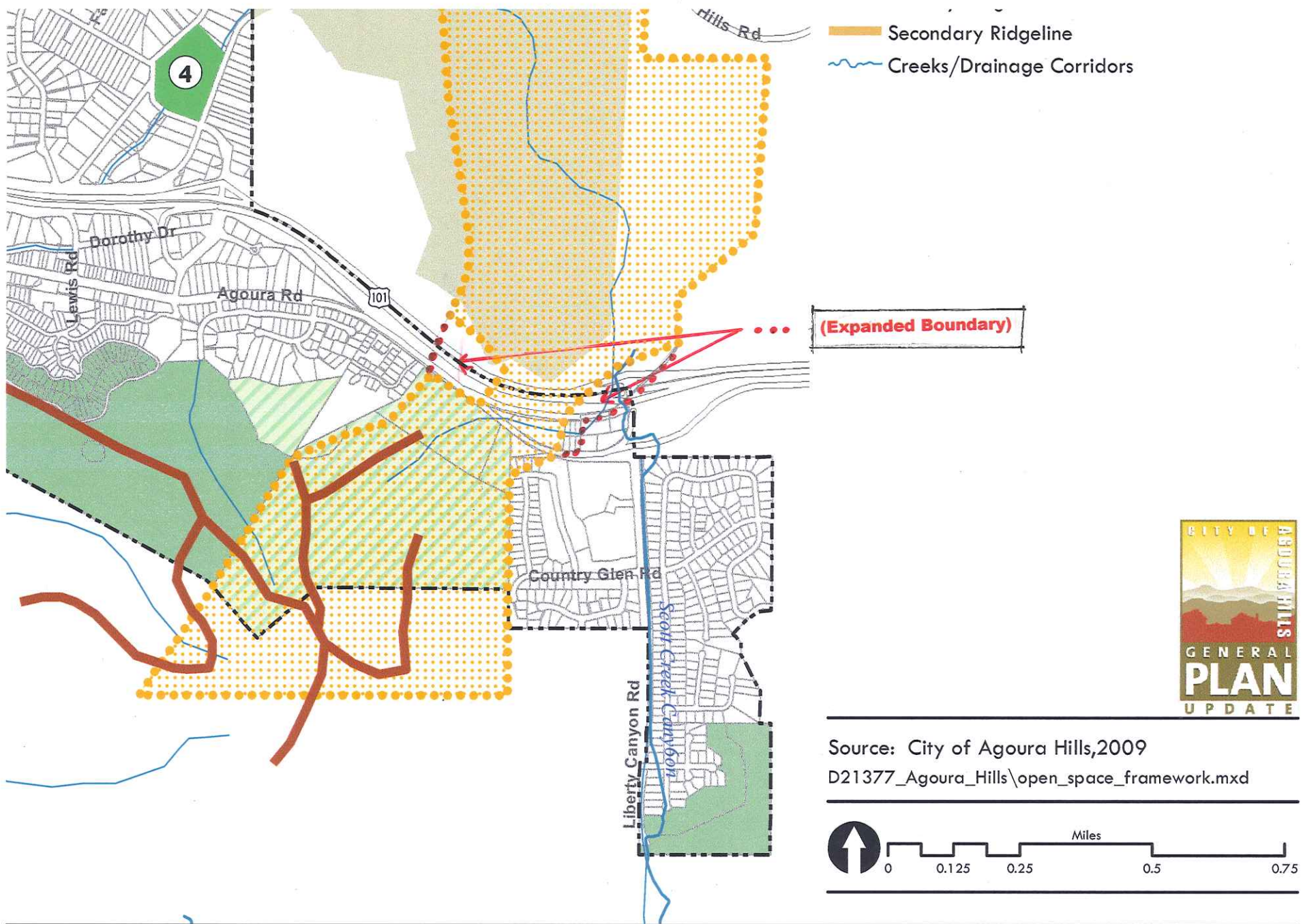


Source: City of Agoura Hills, 2009  
D21377\_Agoura\_Hills\open\_space\_framework.mxd



**Santa Monica  
Mountains National Recreation Area**





Source: City of Agoura Hills, 2009  
 D21377\_Agoura\_Hills\open\_space\_framework.mxd

**Figure NR-1**