

## RESOLUTION NO. 1005

### A RESOLUTION OF THE PLANNING COMMISSION OF THE CITY OF AGOURA HILLS RECOMMENDING THAT THE CITY COUNCIL OF THE CITY OF AGOURA HILLS ADOPT THE CITY OF AGOURA HILLS GENERAL PLAN 2035 AND APPROVE GENERAL PLAN AMENDMENT CASE NO. 10-GPA-001

THE PLANNING COMMISSION OF THE CITY OF AGOURA HILLS HEREBY FINDS, RESOLVES, AND ORDERS AS FOLLOWS:

Section 1. On May 12, 1993, the City Council of the City of Agoura Hills adopted the City of Agoura Hills General Plan as the guide for physical development in the City. A general plan is the general, long-range policy guide adopted by local agencies to enable coordinated, adjusted, and harmonious development, and which provides the proper framework for zoning district recommendations, pursuant to state law (Government Code Section 65300 et seq.).

Section 2. The City's General Plan is subject to amendment if study, public interest, and development policies and/or practices indicate such amendments to be in the best interests of the public health, safety and general welfare.

Section 3. The City of Agoura Hills initiated a General Plan Amendment (Case No. 10-GPA-001) to amend in its entirety the 1993 General Plan by replacing it with a new General Plan ("The City of Agoura Hills General Plan 2035"), as set forth in Exhibit A (City of Agoura Hills General Plan Draft October 2009) and Exhibit B (Additional Changes to the Draft Agoura Hills General Plan of October 2009), incorporated herein by reference.

Section 4. A duly noticed public hearing was held on February 18, 2010 at 6:30 p.m. in the City Hall Council Chambers, 30001 Ladyface Court, Agoura Hills, California. Notice of the time, date, place and purpose of the aforesaid hearing was duly given.

Section 5. Evidence, both written and oral, was duly presented to and considered by the Planning Commission of the City of Agoura Hills at the aforesaid public hearing.

Section 6. The City of Agoura Hills General Plan 2035 was completed in compliance with the requirements of California Government Code Section 65300 et seq.

Section 7. The City of Agoura Hills General Plan 2035 is consistent with and reflective of the City's continuing goals, policies, actions, and intent to adopt a general plan for the physical development of the City of Agoura Hills.

Section 8. The City of Agoura Hills General Plan 2035 sets forth the community's goals for the following as they relate to the physical development of the City: land use and community form, economic development, historic and cultural resources, mobility, utility infrastructure, community services, open space, visual resources, biological resources, water, air quality, mineral resources, energy conservation, climate change, flood hazards, geological and seismic hazards, wildland and urban fire hazards, crime prevention and protection, hazardous materials, emergency preparedness, and noise; provides a guide for decision-making processes, including decisions on development approvals; and informs citizens, developers, and decision-makers of the policies and principles that will guide development within the City.

Section 9. A Final Program Environmental Impact Report (FEIR) has been prepared to assess the potential environmental impacts from implementation of the City of Agoura Hills General Plan 2035 and related General Plan Amendment. The FEIR also describes alternatives to the project and identifies mitigation measures. The Planning Commission considered the FEIR as part of its deliberations and has recommended that the City Council certify the FEIR, adopt a Statement of Overriding Considerations, and adopt the Mitigation Monitoring and Reporting Program.

Section 10. Based upon the aforementioned findings, the Planning Commission hereby recommends that the City Council approve an amendment to the current General Plan (1993), replacing it in its entirety by adopting the City of Agoura Hills General Plan 2035.

PASSED, APPROVED AND ADOPTED this 18<sup>th</sup> day of February 2010, by the following vote to wit:

AYES:	(5)
NOES:	(0)
ABSENT:	(0)
ABSTAIN:	(0)

\_\_\_\_\_  
Steve Rishoff, Chairperson

ATTEST:

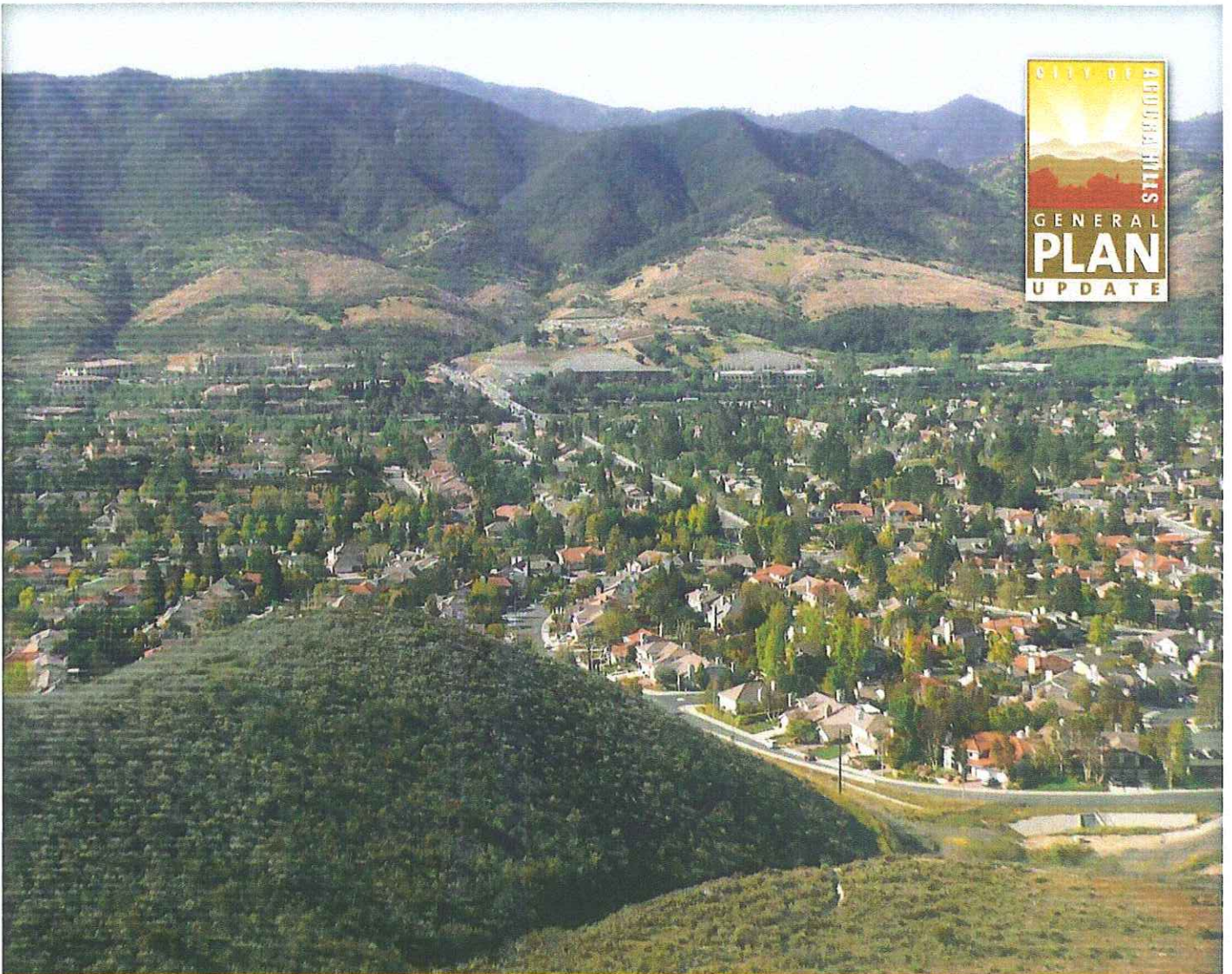
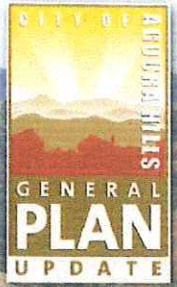
\_\_\_\_\_  
Mike Kamino, Secretary

**EXHIBIT A**

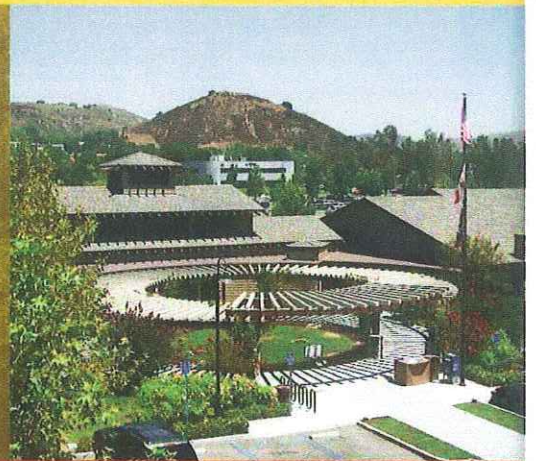
**CITY OF AGOURA HILLS GENERAL PLAN DRAFT OCTOBER 2009**

THE CITY OF AGOURA HILLS GENERAL PLAN DRAFT OCTOBER 2009 IS  
INCLUDED HEREIN IN ITS ENTIRETY, AND IS ON FILE IN THE OFFICE OF  
PLANNING AND COMMUNITY DEVELOPMENT





*City of*  
**AGOURA HILLS**  
**GENERAL PLAN**



DRAFT OCTOBER 2009





**EXHIBIT B**

**ADDITIONAL CHANGES TO THE DRAFT AGOURA HILLS GENERAL PLAN  
OF OCTOBER 2009**

## Additional Changes to the Draft Agoura Hills General Plan of October 2009 - City Council

ITEM	SUGGESTED REVISION						
<b>Chapters 2-5 (Throughout)</b>							
<b>Change 1.</b> Throughout	For ease of reference, all individual implementation programs referenced in Chapters 2-5 are now coded with the relevant chapter. For example, Implementation Measure 1 in Table 6-2 Land Use and Community Form Implementation Program would now read, "LU-1.," as opposed to "1.," with the next reading, "LU-2.". There would be no coding for Table 6-1. The coding for Table 6-3 would be "ED," the coding for Table 6-4 would be "HR," the coding for Table 6-5 would be "M," the coding for Table 6-6 would be "U," the coding for Table 6-7 would be "CS," the coding for Table 6-8 would be "NR," the coding for Table 6-9 would be "S," and the coding for Table 6-10 would be "N."						
<b>Chapter 2: Land Use and Community Development</b>							
<b>Change 2.</b> Page 2-13 Table LU-1	Table LU-1 is now corrected to include an accurate acreage figure for the Open Space/Park land use category as noted below: <table style="margin-left: 20px; border-collapse: collapse;"> <tr> <td style="padding-right: 20px;">Restricted Open Space</td> <td style="text-align: right; border-bottom: 1px solid black;">1,000.5</td> </tr> <tr> <td>Restricted Open Space/Deed Restricted</td> <td style="text-align: right; border-bottom: 1px solid black;">304.2</td> </tr> <tr> <td>Local Park</td> <td style="text-align: right; border-bottom: 1px solid black;">73.5</td> </tr> </table>	Restricted Open Space	1,000.5	Restricted Open Space/Deed Restricted	304.2	Local Park	73.5
Restricted Open Space	1,000.5						
Restricted Open Space/Deed Restricted	304.2						
Local Park	73.5						
<b>Change 3.</b> Page 2-2	<p><b>LU-1.1 Building Intensity and Population Density.</b> Regulate the levels of building intensity and population density according to the standards and land use designations specified by the General Plan and Agoura Hills Municipal Code. Within these designations, cumulative development shall not exceed 8,139 housing units, 1,850,907 square feet of retail services, 3,341,448 square feet of business park/office uses, and 1,118,126 square feet of business park manufacturing uses. (<i>Imp LU-1, LU-2</i>)</p> <p>The original numbers were rounded off. These are the exact numbers.</p>						
<b>Change 4.</b> Page 2-17	<p>The following text is added to the end of the first paragraph on page 2-17 to further describe the type of development to be allowed in the Mixed Use Development land use classification, consistent with Policies LU-13.2, LU-27.1 and LU-32:</p> <p>...nonresidential uses. <u>Development is required to incorporate pedestrian and landscaping amenities and outdoor-oriented uses.</u></p>						

Deleted: 1,018.5

Deleted: 312.2

Deleted: 47.5

Deleted: 150

Deleted: 1

Deleted: 0

Deleted: 0

Deleted: 43

Deleted: 500

Deleted: 000

# Additional Changes to the Draft Agoura Hills General Plan of October 2009 - City Council

## SUGGESTED REVISION

ITEM	SUGGESTED REVISION	
<p><b>Change 5.</b> Page 2-22</p>	<p><b>LU-8.4 Property Setbacks.</b> <u>Encourage variable setbacks to enhance streetscape character and increase building separation. (Imp LU-10, LU-12, LU-27)</u></p> <p>This change is made for wording preference purposes. The content remains the same.</p>	<p><b>Deleted:</b> Discourage uniform</p>
<p><b>Change 6.</b> Page 2-28</p>	<p><b>LU-16.2 Development Form and Architecture.</b></p> <ul style="list-style-type: none"> <li>■ <u>Architectural design vocabulary, articulation, materials, and color palette that is generally consistent, but allows for some variation to enhance design</u></li> </ul> <p>This change to the third bullet of the policy is to emphasize the importance of encouraging variety in design within an overall unified character.</p>	<p><b>Deleted:</b> Consistent a</p> <p><b>Formatted:</b> Font: Trebuchet MS</p>
<p><b>Change 7.</b> Page 2-30</p>	<p><b>LU-17.1 Site Development.</b></p> <ul style="list-style-type: none"> <li>■ <u>Property setbacks, frontage design, and building massing that is generally consistent, but allows for some variation to enhance design</u></li> </ul> <p>This change to the second bullet of the policy is to emphasize the importance of encouraging variety in design within an overall unified character.</p>	<p><b>Deleted:</b> Consistent p</p>
<p><b>Change 8.</b> Page 2-42</p>	<p>The following change is made for wording preference purposes. The content remains the same.</p> <p><b>LU-30.1 Land Uses.</b> <u>Encourage development of uses predominantly serving community residents, such as office and retail service and commercial, including equestrian-supporting uses, and promote the re-use of underutilized properties. (Imp LU-10, LU-42)</u></p>	<p><b>Deleted:</b> Limit</p> <p><b>Deleted:</b> to</p>
<p><b>Change 9.</b> Page 2-48</p>	<p>The following policy was inadvertently omitted from the document, and is now added:</p> <p><b>HR-3.3 Discovery of Remains.</b> <u>Require that if human remains or funerary objects are discovered and unearthed during any soil disturbing activity, the discoveries shall be treated in compliance with applicable state and federal laws, including notifying the County Coroner and the California Native American Heritage Commission, as appropriate, and following relevant procedures.</u></p>	<p><b>Formatted:</b> Font: Bold</p>



**Additional Changes to the Draft Agoura Hills General Plan of October 2009 - City Council**

ITEM	SUGGESTED REVISION
<p><b>Change 10.</b> Page 3-25</p>	<p>This additional area was inadvertently omitted, and is now added to the list of existing sidewalks in the City in the last full paragraph on this page, which reads:</p> <p>The pedestrian facilities available within the City are comprised of sidewalks, crosswalks, and a foot bridge over the US-101. Sidewalks are generally available to link the residential communities to the arterial roads. Several sections of roadway do not currently have sidewalks available. These locations include: Driver Avenue between Easterly Road and Chesebro Road; Kanan Road, west side between Laro Drive and the northern City limits; portions of Agoura Road between the western City limits and Kanan Road; <u>Agoura Road east of Kanan Road to the eastern City limits; and Reyes Adobe Road north of Rainbow Hill Road to Lake Lindero Drive on the west side.</u></p>

Deleted: and

**Chapter 3: Infrastructure and Community Services**

<p><b>Change 11.</b> Page 3-8</p>	<p>The following correction is now been made to the paragraph on page 3-8 that describes Chesebro Road. The speed limit was incorrectly referenced.</p> <ul style="list-style-type: none"> <li>■ <b>Chesebro Road</b>— Chesebro Road is a east-west collector street between Canwood Street and Palo Comado Canyon road north of the US-101 freeway and a north-south collector street between Agoura Road and the US-101 freeway eastbound on-ramp. One travel lane is provided in each direction. Sidewalk and street parking is provided on the north side of the road between Canwood Street and Palo Comado Canyon Road. Sidewalks and street parking are provided along both sides of the road south of Dorothy Drive and along the south side of the facility between Palo Comado Canyon road south of the US-101 freeway and Agoura Road. The speed limit is <u>35 miles per hour in some places, and 25 miles per hour in others, particularly for the segment that runs through Old Agoura.</u></li> </ul>
---------------------------------------	--



# Additional Changes to the Draft Agoura Hills General Plan of October 2009 - City Council

ITEM.

SUGGESTED REVISION

## Chapter 4: Natural Resources

<p><b>Change 12.</b> Page 4-7</p>	<p>The following roadway is now added to the list of road segments that have valuable scenic resources. This segment was originally intended to be included in the document.</p> <p>The following road segments are valuable scenic resources in the community that provide scenic views of the Santa Monica Mountains, including Ladyface Mountain.</p> <ol style="list-style-type: none"> <li>1. Reyes Adobe Road from Thousand Oaks Blvd. to Agoura Road</li> <li>2. Thousand Oaks Blvd. from westerly City limits to easterly City limits</li> <li>3. Agoura Road from westerly City limits to easterly City limits</li> <li>4. <u>Kanan Road from Agoura Road south to the City limits</u></li> </ol>
<p><b>Change 13.</b> Page 4-8</p>	<p>The following paragraph is now added to page 4-8 just before Goal NR-2. It is a description of the road segment that is Kanan Road from U.S. 101 south to the City limits, noted in Change 8.</p> <p><u>Kanan Road runs north/south through the City. The segment south of Agoura Road to the City limits provides excellent views of Ladyface Mountain. South of Agoura Road, it is currently a two-lane road through undeveloped areas with no landscaping. This segment serves as a scenic entry at the southerly City limits.</u></p>
<p><b>Change 14.</b> Page 4-10</p>	<p>The following paragraph is now added to Subsection C. Biological Resources, page 4-10, in between the 2<sup>nd</sup> and 3<sup>rd</sup> paragraphs:</p> <p><u>The Liberty Canyon Wildlife Corridor is part of a larger habitat linkage between the Santa Monica Mountains, the Simi Hills, the Santa Susana Mountains, and the Sierra Madre Mountains. The corridor passes through the City in the southeastern corner, as shown on Figure NR-1.</u></p> <p>This additional text is added to provide greater context for identification of the corridor on Figure NR-1 and in Policy NR-4.12.</p>

- Deleted:
- Formatted: Font: Not Bold
- Formatted: Font: Not Bold
- Deleted: views of Ladyface Mountain. South of Agoura Road, it is currently a two-lane road through undeveloped areas, with no.
- Deleted:

**Additional Changes to the Draft Agoura Hills General Plan of October 2009 - City Council**

ITEM	SUGGESTED REVISION
<p><b>Change 15.</b> Page 4-14</p>	<p>The following text is now added to Policy NR-4.12 to clarify that in addition to the Liberty Canyon Wildlife Corridor being protected and maintained, areas adjacent to the corridor should be considered for protection, as appropriate. This is because, while the corridor boundaries have been identified, these boundaries do not prevent wildlife from passing through adjacent areas.</p> <p style="padding-left: 40px;">NR-4.12    <b>Wildlife Corridors.</b> Protect and maintain wildlife corridors, particularly the Liberty Canyon wildlife corridor, <u>and adjacent areas as appropriate</u>, to help the continued survival of wildlife. <i>(Imp NR-4)</i></p>
<p><b>Chapter 5: Community Safety</b></p>	
<p><b>Change 16.</b> Page 5-9</p>	<p>The following text is now added to Policy S-3.9 to further protect public natural resources while ensuring adequate wildland fire prevention. This change is made in response to the letter from the National Park Service, Santa Monica Mountains National Recreation Area, dated January 8, 2010.</p> <p style="padding-left: 40px;">S-3.9    <b>Fuel Modification.</b> Ensure that new development complies with fuel modification requirements of the Los Angeles County Fire Department while protecting natural resources and habitat to the extent feasible, <u>and encourage design that minimizes the need for fuel modification on public parklands, to the extent feasible.</u> <i>(Imp S-8, CS-30)</i></p>
<p><b>Chapter 6: Implementation Program</b></p>	
<p><b>Change 17.</b> Throughout</p>	<p>For ease of reference, all individual implementation programs are now coded with the relevant chapter. For example, Implementation Measure 1 in Table 6-2 Land Use and Community Form Implementation Program would now read, "LU-1.," as opposed to "1.," with the next reading, "LU-2.". There would be no coding for Table 6-1. The coding for Table 6-3 would be "ED," the coding for Table 6-4 would be "HR," the coding for Table 6-5 would be "M," the coding for Table 6-6 would be "U," the coding for Table 6-7 would be "CS," the coding for Table 6-8 would be "NR," the coding for Table 6-9 would be "S," and the coding for Table 6-10 would be "N."</p>

Deleted: C  
Deleted: 25



## Additional Changes to the Draft Agoura Hills General Plan of October 2009 - City Council

ITEM	SUGGESTED REVISION
<p><b>Change 18.</b> Page 6-4</p>	<p>The following text is added to Implementation Measure LU-7 in Table 6-2 to more accurately explain the level of improvements that would be required:</p> <p><u>LU-7.</u> The City shall continue to require developers to construct, <u>upgrade or repair</u> improvements to the public right-of-way along their site frontage, as appropriate, and require developers to construct other infrastructure improvements that are necessary to serve the developments from the public right-of-way to the project site, as well as other improvements identified as mitigation measures for project impacts under the California Environmental Quality Act (CEQA).</p>
<p><b>Change 19.</b> Page 6-5</p>	<p>The following text is added to Implementation Measure LU-8 in Table 6-5 to reflect the possibility of the City's participation in regional efforts:</p> <p><u>LU-8.</u> The City shall explore the feasibility of establishing a fee system for recovering costs of providing sewer, storm water, and other necessary infrastructure to new development, <u>or may participate in applicable regional or Countywide programs at the City's discretion.</u></p>
<p><b>Change 20.</b> Page 6-5</p>	<p>The following text in Implementation Measure LU-10 in Table 6-2 is changed to more accurately describe the City's action:</p> <p><u>LU-10.</u> The City shall continue to <u>enforce</u> the Municipal Code.</p>
<p><b>Change 21.</b> Page 6-6</p>	<p>The following text in Implementation Measure LU-11 in Table 6-2 is changed to more accurately describe the City's action:</p> <p><u>LU-11.</u> The City shall continue to <u>enforce</u> the City's Hillside and Significant Ecological Areas Ordinance.</p>
<p><b>Change 22.</b> Page 6-15</p>	<p>The following text change in Implementation Measure LU-42 is included to be consistent with the wording change in Policy LU-30.1:</p> <p><u>LU-42.</u> The City shall amend the Old Agoura Design Overlay District (OA) in the Zoning Ordinance to differentiate Subarea 11, as shown on Figure LU-3, from the remaining commercial areas of the district. Allowed uses in this special area shall be identified, and <u>those primarily serving community residents, including smaller scale office and retail commercial, and emphasizing equestrian-oriented uses, shall be encouraged.</u></p>

Deleted: implement

Deleted: implement

Deleted: shall be limited to

**Additional Changes to the Draft Agoura Hills General Plan of October 2009 - City Council**

ITEM.	SUGGESTED REVISION
<p><b>Change 23.</b> Page 6-18</p>	<p>The following implementation measure was inadvertently omitted from the document. This text is now added in Table 6-4:</p> <p><u>HR-8</u> During project review and entitlement, the City shall require as a condition of project approval that if human remains or funerary objects are discovered during earthwork activities, applicable federal and state laws shall be adhered to, including ceasing subsurface work until the County Coroner has made the necessary findings as to origin and disposition of the human remains, and if the finds are of Native American descent, the California Native American Heritage Commission is notified, and proper procedures followed.</p> <p>Implements Which Policy(ies): <u>HR-3.3</u></p> <p>Responsible Department(s): <u>Planning and Community Development</u></p> <p>Supporting Department(s): <u>N/A</u></p>
<p><b>Change 24.</b> Page 6-42</p>	<p>The following text is added to Implementation Measure U-53 in Table 6-6 to further clarify the City's intent:</p> <p><u>U-53.</u> The City shall continue to coordinate with telecommunications providers to ensure that City residents, businesses and institutions have access to state of the art technology resources and adequate coverage, while ensuring the appropriate design and location of such facilities, pursuant to federal and state law.</p>
<p><b>Change 25.</b> Page 6-60</p>	<p>The following are changes to Implementation Measure NR-26 in Table 6-8 to reference legal requirements:</p> <p><u>NR-26.</u> The City shall ensure that any City plans prepared related to climate change and greenhouse gas reduction are consistent with relevant regional plans addressing similar issues, and that the City coordinates and collaborates, as legally required, with other agencies and organizations to meet climate change and greenhouse gas reduction goals, required by the state and federal government.</p>
<p><b>Change 26.</b> Page 6-17</p>	<p>The following Implementation Measure HR-1 is now changed to read:</p> <p><u>HR-1.</u> The City shall consider creating a program to identify historic resources, including recommendations to promote and protect such resources to the extent feasible.</p> <p>The elimination of the phrase "of local significance" allows the City to also consider a program to identify historic resources that may qualify for state or federal designation as well.</p>

Formatted: Body, Indent: Left: 0", Hanging: 0.61", Tabs: Not at 0.75"

Deleted: necessary

Formatted: Bullets and Numbering

Deleted: of local significance

Formatted: Indent: Left: 0.25", Hanging: 0.43"



## Additional Changes to the Draft Agoura Hills General Plan of October 2009 - City Council

### SUGGESTED REVISION

ITEM.

**Figures - see attached figures with edits**

Figure M-1.	Driver Avenue is now shown as a “collector” road classification. It was previously incorrectly shown as an “arterial.”
Figure LU-1.	The legend reference to “Santa Monica Mountains National Recreation Area” is now removed, as is the corresponding shading on the map. However, the general reference to the “Santa Monica Mountains National Recreation Area” in the northeastern corner remains, and this same reference is added along the southern edge of the map. These changes are in response to the letter from the National Park Service, Santa Monica Mountains National Recreation Area (SMMNRA), dated January 8, 2010 regarding the SMMNRA boundaries.
Figure LU-2.	<p>The triangular portion of the Agoura High School site in the northeastern corner is now shown as an “Open Space-Restricted (OS-R)” designation. It was previously incorrectly identified as “Public Facility (PF).”</p> <p>The group of parcels in the southeastern portion of the City, bound by Agoura Road to the south and west, U.S. Highway 101 to the north, and Liberty Canyon Road to the east, is now shown as a “Business Park - Manufacturing (BP-M)” designation. It was previously incorrectly identified as “Open Space - Restricted (OS-R).”</p> <p>The legend reference to “Residential Very Low Density” should be corrected to show the correct density as “0.2-1.0 du/ac,” not “&lt;2 du/ac).”</p> <p>The legend reference to “Santa Monica Mountains National Recreation Area” is now removed, as is the corresponding shading on the map. However, the general reference to the “Santa Monica Mountains National Recreation Area” in the northeastern corner remains, and this same reference is added along the southern edge of the map. These changes are in response to a letter from the National Park Service, Santa Monica Mountains National Recreation Area (SMMNRA), dated January 8, 2010 regarding the SMMNRA boundaries.</p>



## Additional Changes to the Draft Agoura Hills General Plan of October 2009 - City Council

ITEM	SUGGESTED REVISION
Figure LU-3.	<p>The western boundary of Subarea 5 is now correctly shown to be east of the County Animal Shelter property. It was previously incorrectly shown to include this property.</p> <p>The triangular portion of the Agoura High School site in the northeastern corner is now shown as an "Open Space-Restricted (OS-R)" designation. It was previously incorrectly identified as "Public Facility (PF)."</p> <p>The group of parcels in the southeastern portion of the City, bound by Agoura Road to the south and west, U.S. Highway 101 to the north, and Liberty Canyon Road to the east, is now shown as a "Business Park - Manufacturing (BP-M)" designation. It was previously incorrectly identified as "Open Space - Restricted (OS-R)."</p> <p>The legend reference to "Residential Very Low Density" should be corrected to show the correct density as "0.2-1.0 du/ac," not "&lt;2 du/ac."</p> <p>The legend reference to "Santa Monica Mountains National Recreation Area" is now removed, as is the corresponding shading on the map. However, the general reference to the "Santa Monica Mountains National Recreation Area" in the northeastern corner remains, and this same reference is added along the southern edge of the map. These changes are in response to the letter from the National Park Service, Santa Monica Mountains National Recreation Area (SMMNRA), dated January 8, 2010, regarding the SMMNRA boundaries.</p>
Figure NR-1	<p>Figure NR-1 has been revised in response to a letter from the National Park Service, Santa Monica Mountains National Recreation Area (SMMNRA), dated January 8, 2010, regarding expanding the boundary of the Liberty Canyon wildlife corridor. The limits of the corridor have been widened as the corridor passes over the freeway and just south of the freeway. Per SMMNRA request, the boundary has been extended on the western side, and partially on the eastern side, with the exception of the existing developed area on the east.</p> <p>The legend reference to "Santa Monica Mountains National Recreation Area" is now removed, as is the corresponding shading on the map. However, the general reference to the "Santa Monica Mountains National Recreation Area" in the northeastern corner remains, and this same reference is added along the southern edge of the map. These changes are in response to the letter from the National Park Service, Santa Monica Mountains National Recreation Area (SMMNRA), dated January 8, 2010, regarding the SMMNRA boundaries.</p>
Figure CS-1	<p>The general reference to the "Santa Monica Mountains National Recreation Area" in the northeastern corner has also been added along the southern edge of the map. These changes are in response to the letter from the National Park Service, Santa Monica Mountains National Recreation Area (SMMNRA), dated January 8, 2010, regarding the SMMNRA boundaries.</p>

## Additional Changes to the Draft Agoura Hills General Plan of October 2009 - City Council



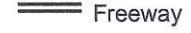

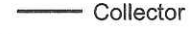

ITEM.	SUGGESTED REVISION
Figure CS-2	The legend reference to "Santa Monica Mountains National Recreation Area" is now removed, as is the corresponding shading on the map. However, the general reference to the "Santa Monica Mountains National Recreation Area" in the northeastern corner remains, and this same reference is added along the southern edge of the map. These changes are in response to the letter from the National Park Service, Santa Monica Mountains National Recreation Area (SMMNRA), dated January 8, 2010, regarding the SMMNRA boundaries.
Figure CS-3	Figure CS-3 has been revised in response to the letter from the National Park Service, Santa Monica Mountains National Recreation Area (SMMNRA), dated January 8, 2010. The shaded areas indicating SMMNRA areas have been removed for clarity, the purpose of the figure being to show the trail network. Symbols on some of the trails regarding type of use and status have been corrected pursuant to the SMMNRA letter.
Figure NR-2	The map shading referring to "Santa Monica Mountains National Recreation Area" is now removed. However, the general reference to the "Santa Monica Mountains National Recreation Area" in the northeastern corner remains, and this same reference is added along the southern edge of the map. These changes are in response to a letter from the National Park Service, Santa Monica Mountains National Recreation Area (SMMNRA), dated January 8, 2010, regarding the SMMNRA boundaries.
Figure S-1	<p>The general reference to the "Santa Monica Mountains National Recreation Area" in the northeastern corner has also been added along the southern edge of the map. These changes are in response to the letter from the National Park Service, Santa Monica Mountains National Recreation Area (SMMNRA), dated January 8, 2010, regarding the SMMNRA boundaries.</p> <p>The reference in the legend to Special Flood Hazard is revised as follows: "Inundated by 100-Year Flood" is replaced with "1% Annual Chance Flood." This is to reflect new terminology, as noted in the October 22, 2009 memo from the Ventura County Watershed Protection District.</p>
Figure N-1	The general reference to the "Santa Monica Mountains National Recreation Area" in the northeastern corner has also been added along the southern edge of the map. These changes are in response to the letter from the National Park Service, Santa Monica Mountains National Recreation Area (SMMNRA), dated January 8, 2010, regarding the SMMNRA boundaries.
Figure N-2	The general reference to the "Santa Monica Mountains National Recreation Area" in the northeastern corner has also been added along the southern edge of the map. These changes are in response to the letter from the National Park Service, Santa Monica Mountains National Recreation Area (SMMNRA), dated January 8, 2010, regarding the SMMNRA boundaries.

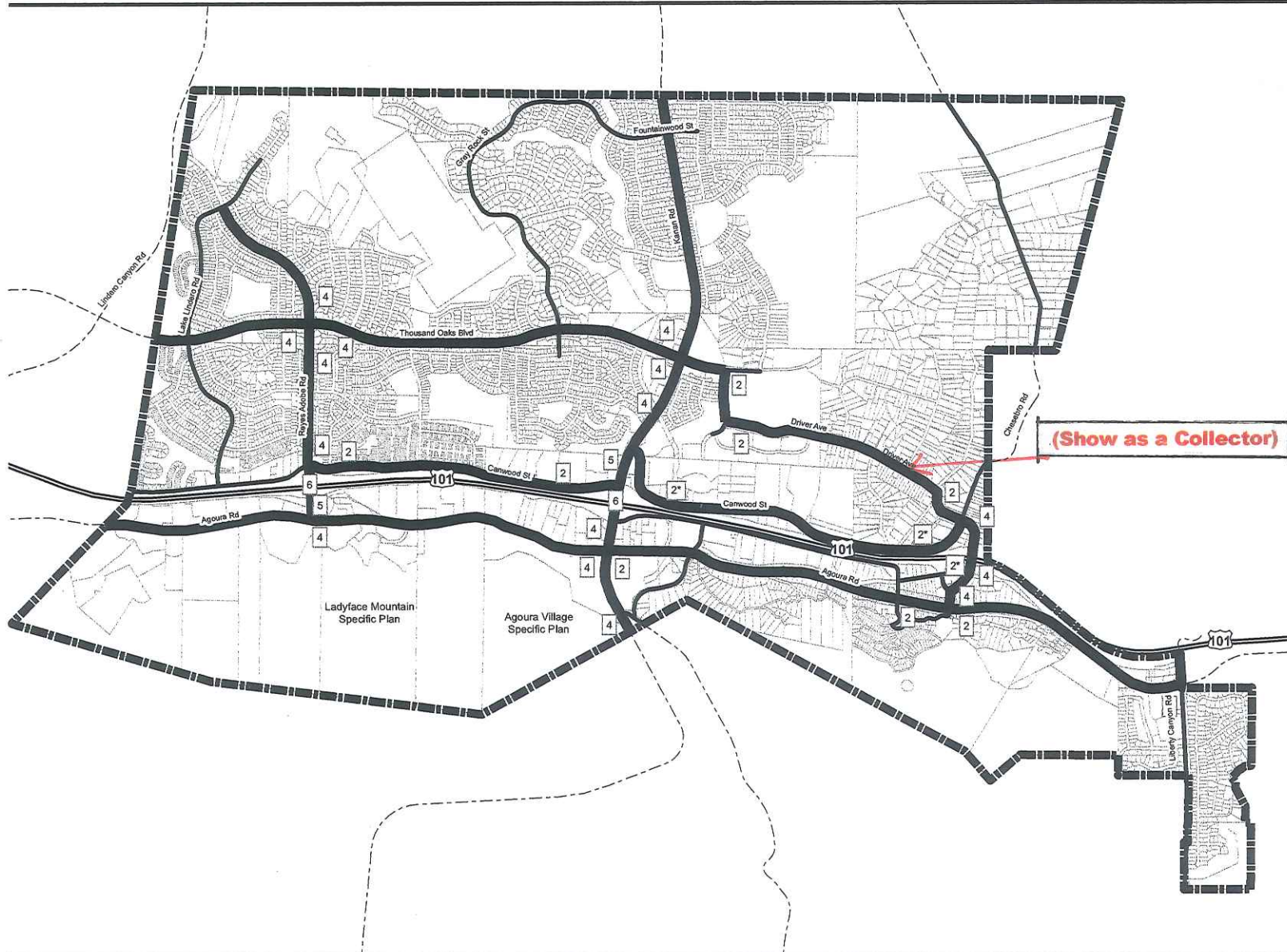


**CITY of AGOURA HILLS**  
General Plan Update

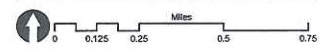
**CIRCULATION PLAN AND  
STREET CLASSIFICATION**

**Legend**

-  City Limits
-  Number of Lanes
- Road Classification**
-  Freeway
-  Arterial
-  Collector
-  2\* Two lanes plus continuous left-turn lane

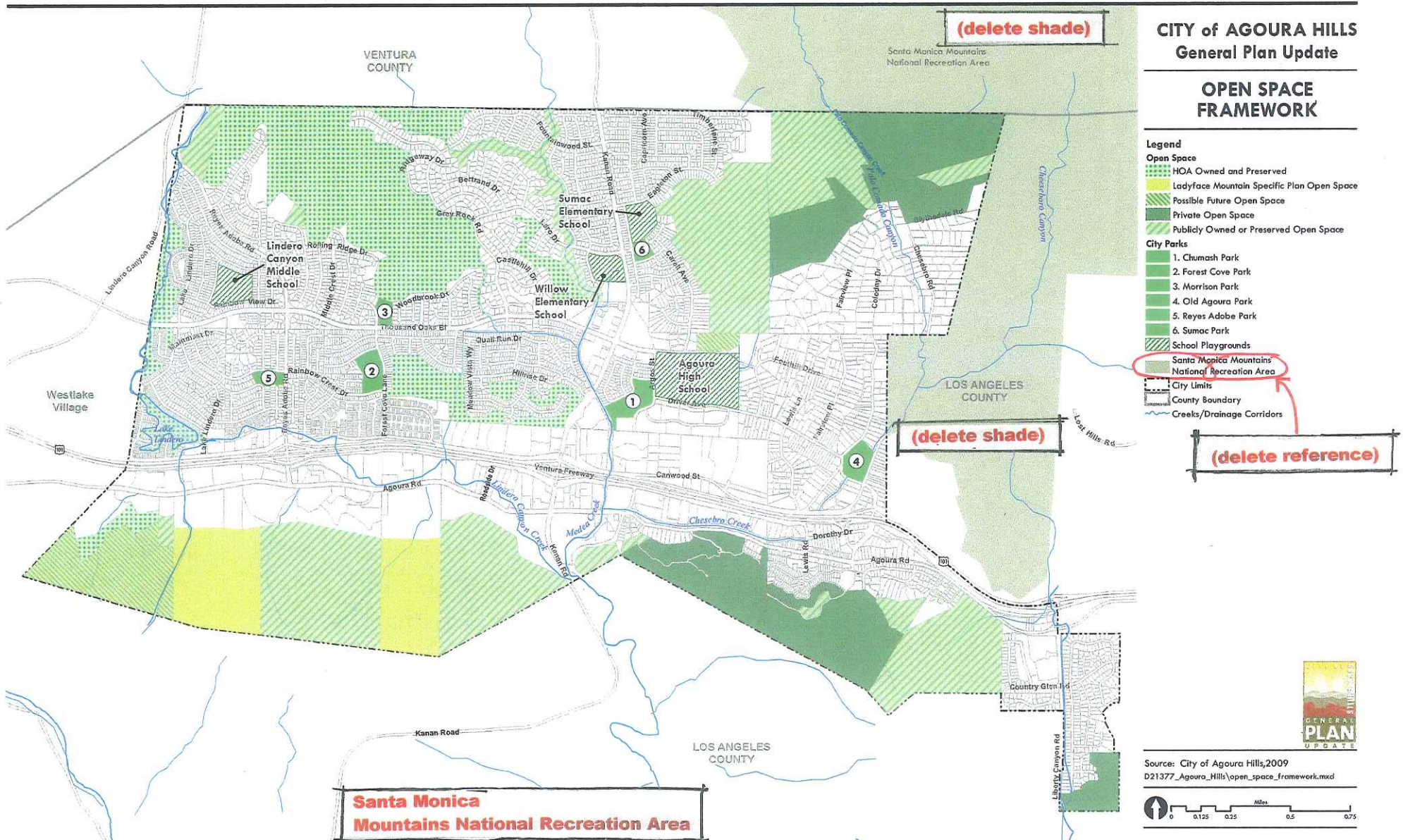


October 1, 2009  
M1\_Circulation Plan Agoura Hills Template.mxd

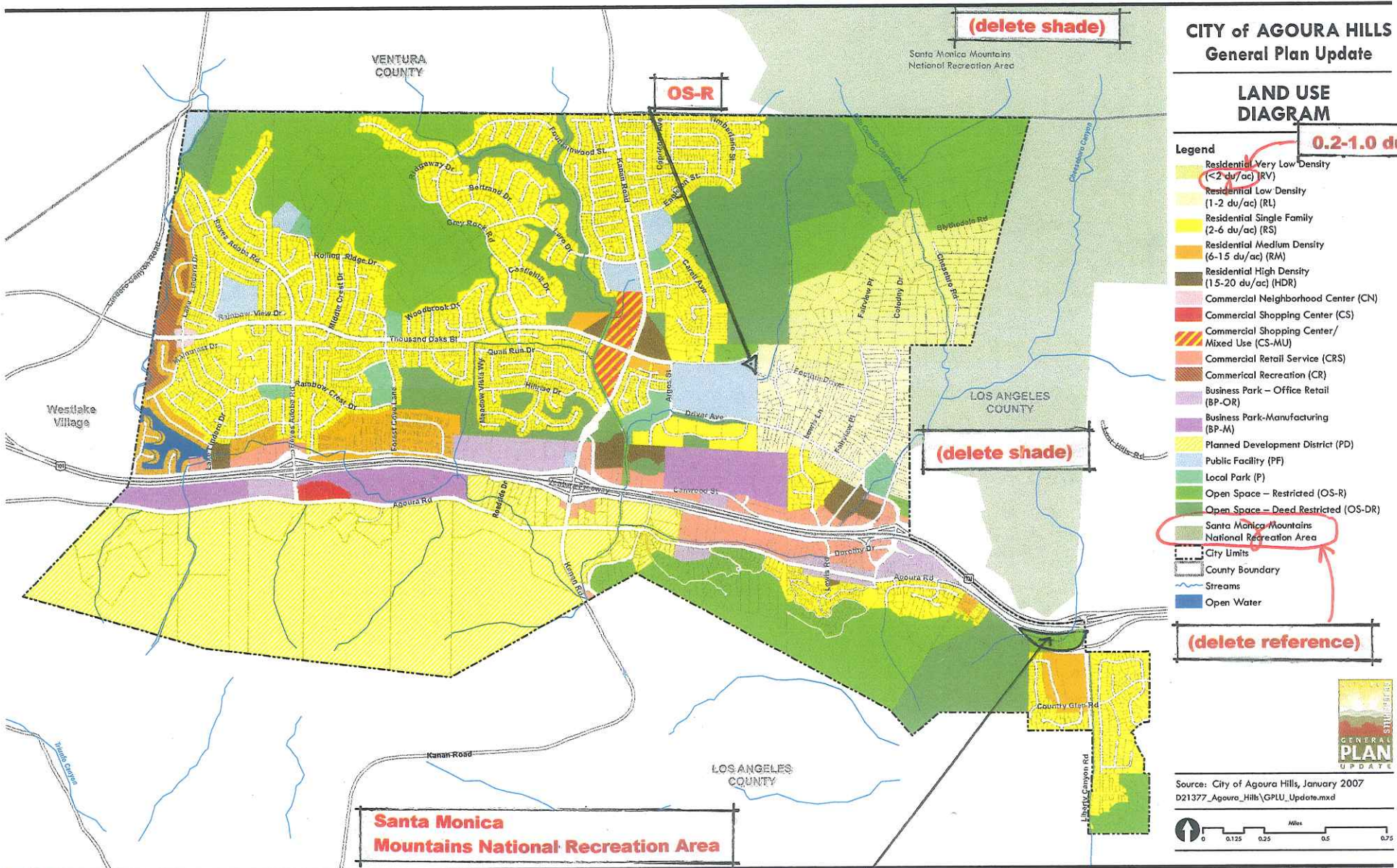


**FIGURE M-1**









**CITY of AGOURA HILLS  
General Plan Update**

**LAND USE  
DIAGRAM**

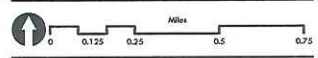
**Legend** 0.2-1.0 du/ac.

- Residential Very Low Density (<2 du/ac) (RV)
- Residential Low Density (1-2 du/ac) (RL)
- Residential Single Family (2-6 du/ac) (RS)
- Residential Medium Density (6-15 du/ac) (RM)
- Residential High Density (15-20 du/ac) (HDR)
- Commercial Neighborhood Center (CN)
- Commercial Shopping Center (CS)
- Commercial Shopping Center/Mixed Use (CS-MU)
- Commercial Retail Service (CRS)
- Commercial Recreation (CR)
- Business Park - Office Retail (BP-OR)
- Business Park-Manufacturing (BP-M)
- Planned Development District (PD)
- Public Facility (PF)
- Local Park (P)
- Open Space - Restricted (OS-R)
- Open Space - Deed Restricted (OS-DR)
- Santa Monica Mountains National Recreation Area
- City Limits
- County Boundary
- Streams
- Open Water

**(delete reference)**



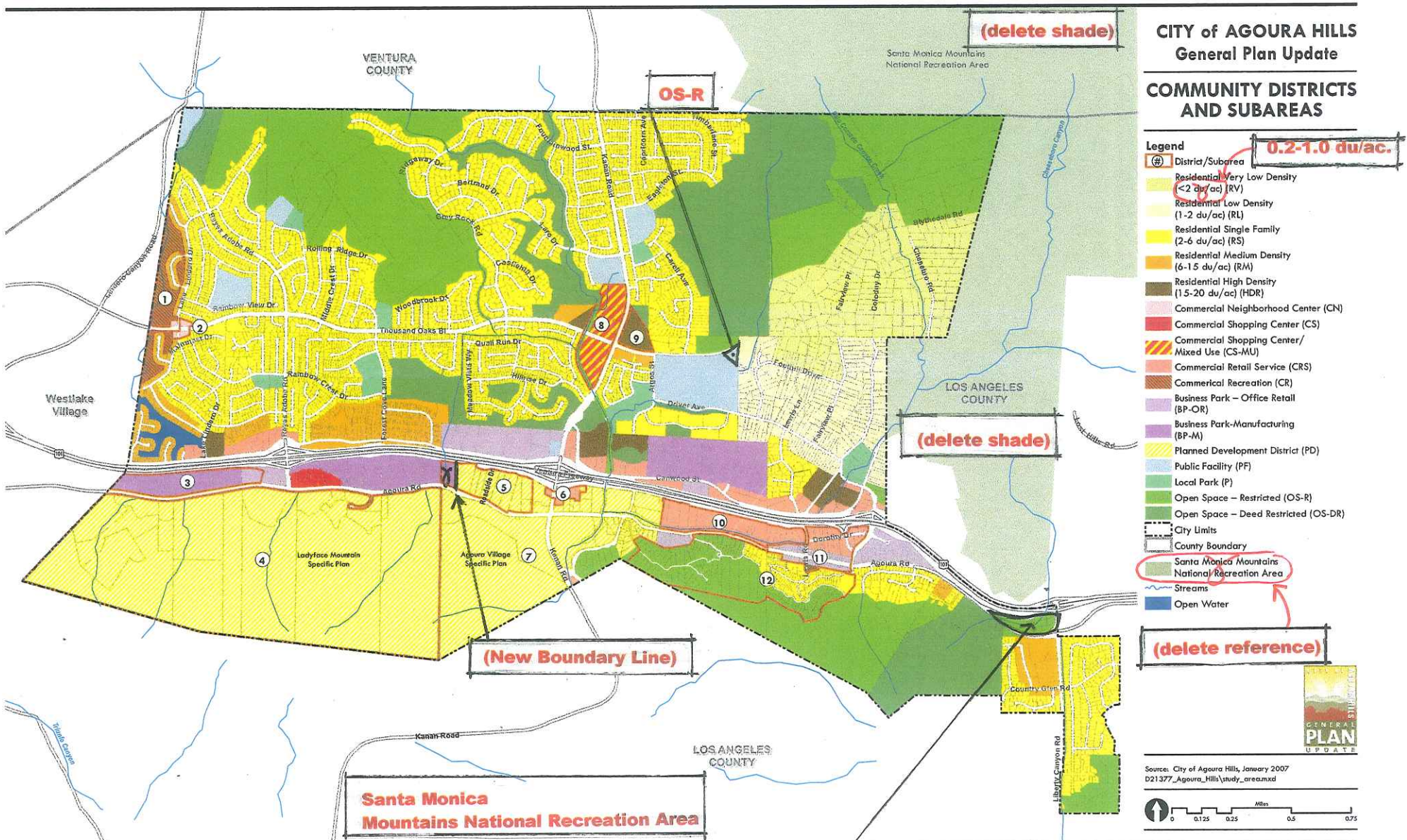
Source: City of Agoura Hills, January 2007  
D21377\_Agoura\_Hills\GPLU\_Update.mxd



**Figure LU-2**

**BP-M**







**CITY of AGOURA HILLS  
General Plan Update**

**HABITATS and  
SENSITIVE SPECIES**

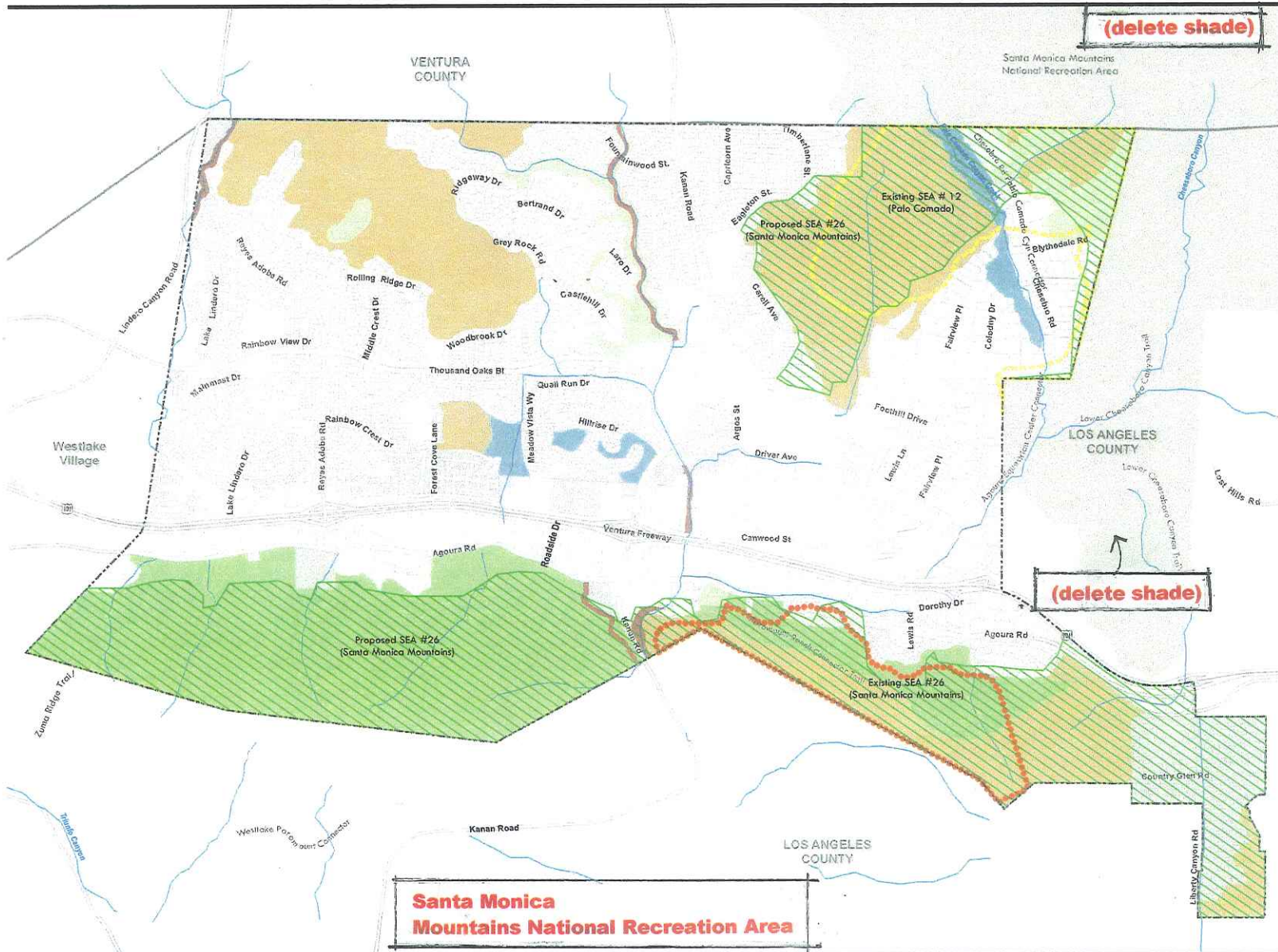
**Legend**

**Vegetation Community**

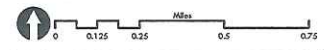
-  Chaparral
-  Coastal Sage Scrub
-  Developed
-  Grassland
-  Oak Woodland
-  Riparian Woodland

**Significant Ecological Areas**

-  Existing SEA # 12 (Palo Comado)
-  Existing SEA #26 (Santa Monica Mountains)
-  Proposed SEA #26 (Santa Monica Mountains)
-  City Limits
-  County Boundary
-  Streams



Source: City of Agoura Hills General Plan 2003;  
Agoura Village Specific Plan ER; LA County Dept.  
Regional Planning, 2009.  
D21377\_Agoura\_Hills\Veg\_Communities\_CNDDb.mxd



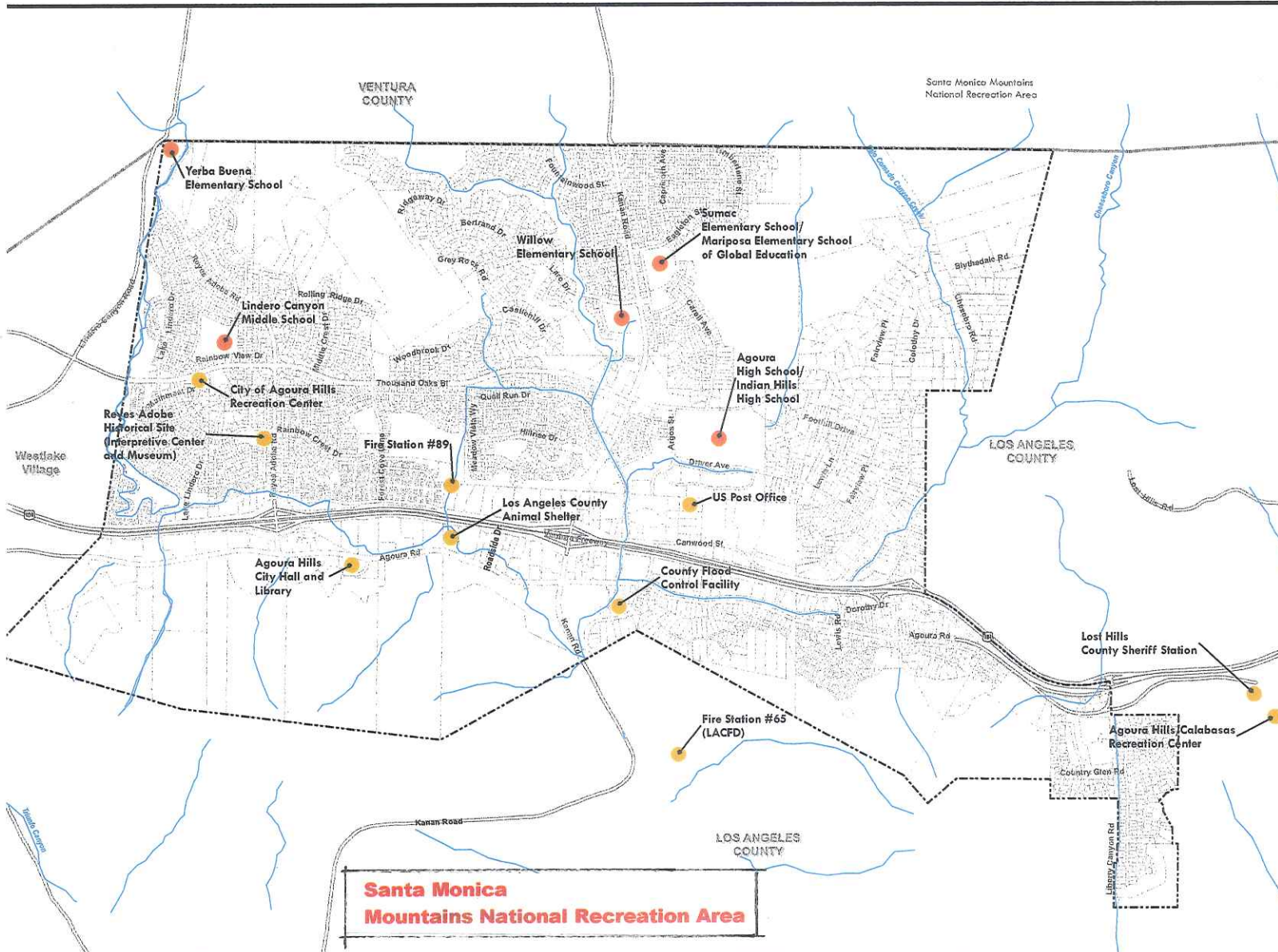
**Figure NR-2**

**CITY of AGOURA HILLS  
General Plan Update**

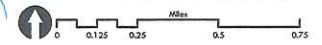
**COMMUNITY FACILITIES**

**Legend**

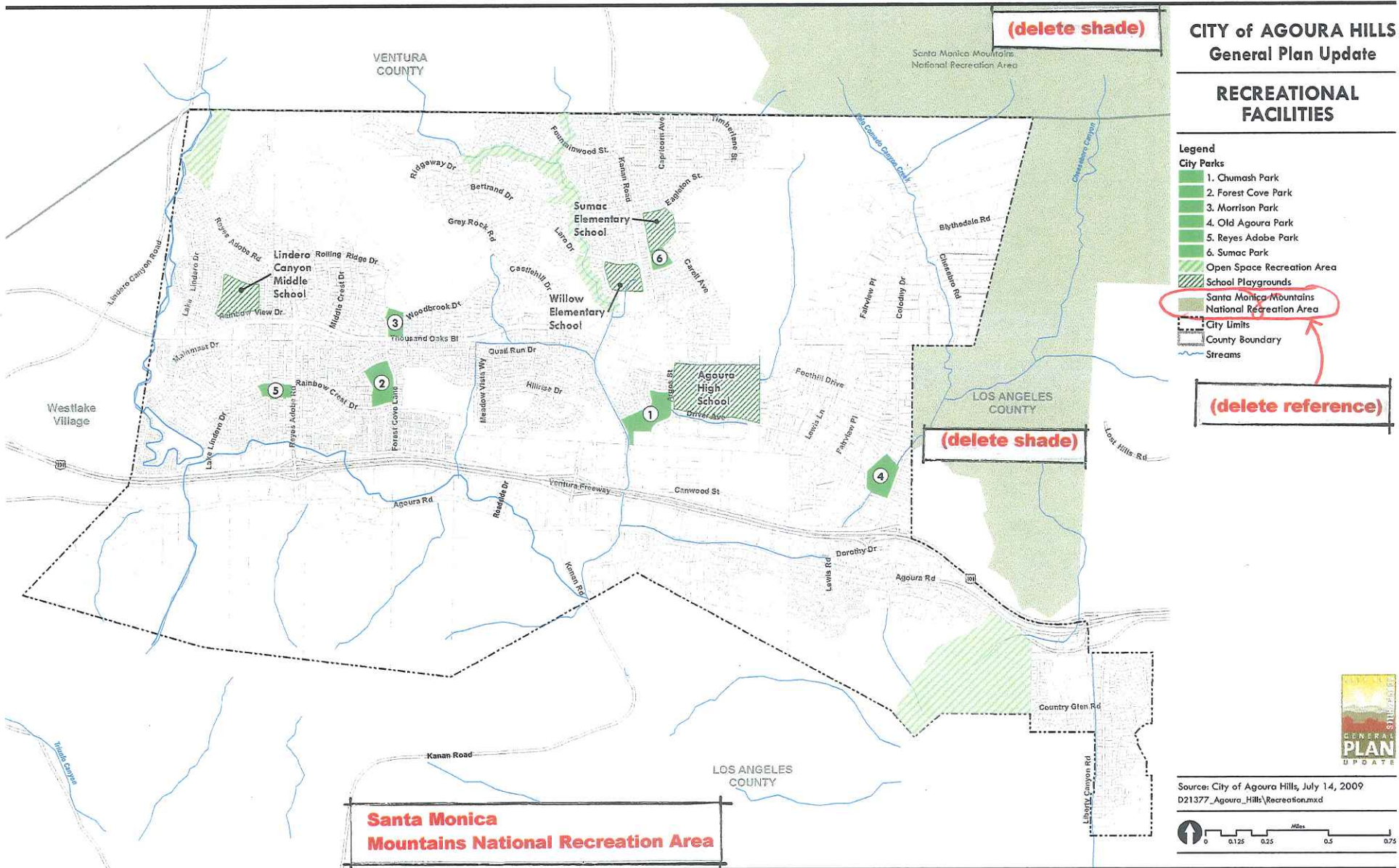
- Schools
- Community Facilities
- City Limits
- Parcel Boundaries
- County Boundary
- ~ Streams



Source: City of Agoura Hills, January 2007  
D21377\_Agoura\_Hills\_Community\_Facilities.mxd







**CITY of AGOURA HILLS  
General Plan Update**

**RECREATIONAL  
FACILITIES**

- Legend**
- City Parks**
- 1. Chumash Park
  - 2. Forest Cove Park
  - 3. Morrison Park
  - 4. Old Agoura Park
  - 5. Reyes Adobe Park
  - 6. Sumac Park
- Open Space Recreation Area
  - School Playgrounds
  - Santa Monica Mountains National Recreation Area
  - City Limits
  - County Boundary
  - Streams

**(delete reference)**

**Santa Monica  
Mountains National Recreation Area**

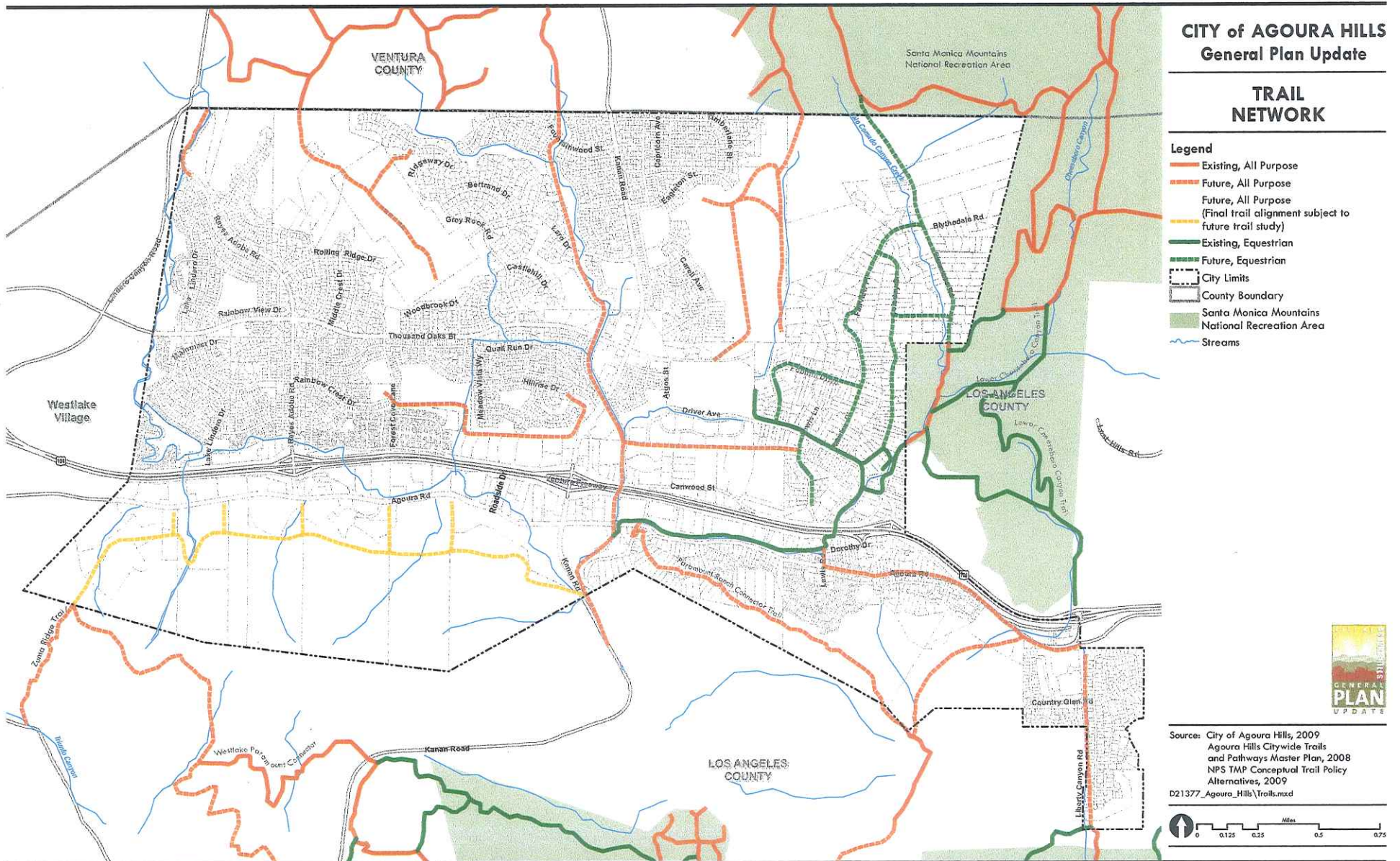
Source: City of Agoura Hills, July 14, 2009  
D21377\_Agoura\_Hills\Recreation.mxd

0 0.125 0.25 0.5 0.75 Miles



**Figure CS-2**





**(Figure CS-3 of the General Plan Shall Be Like FEIR Figure 4.12-2, Attached)**

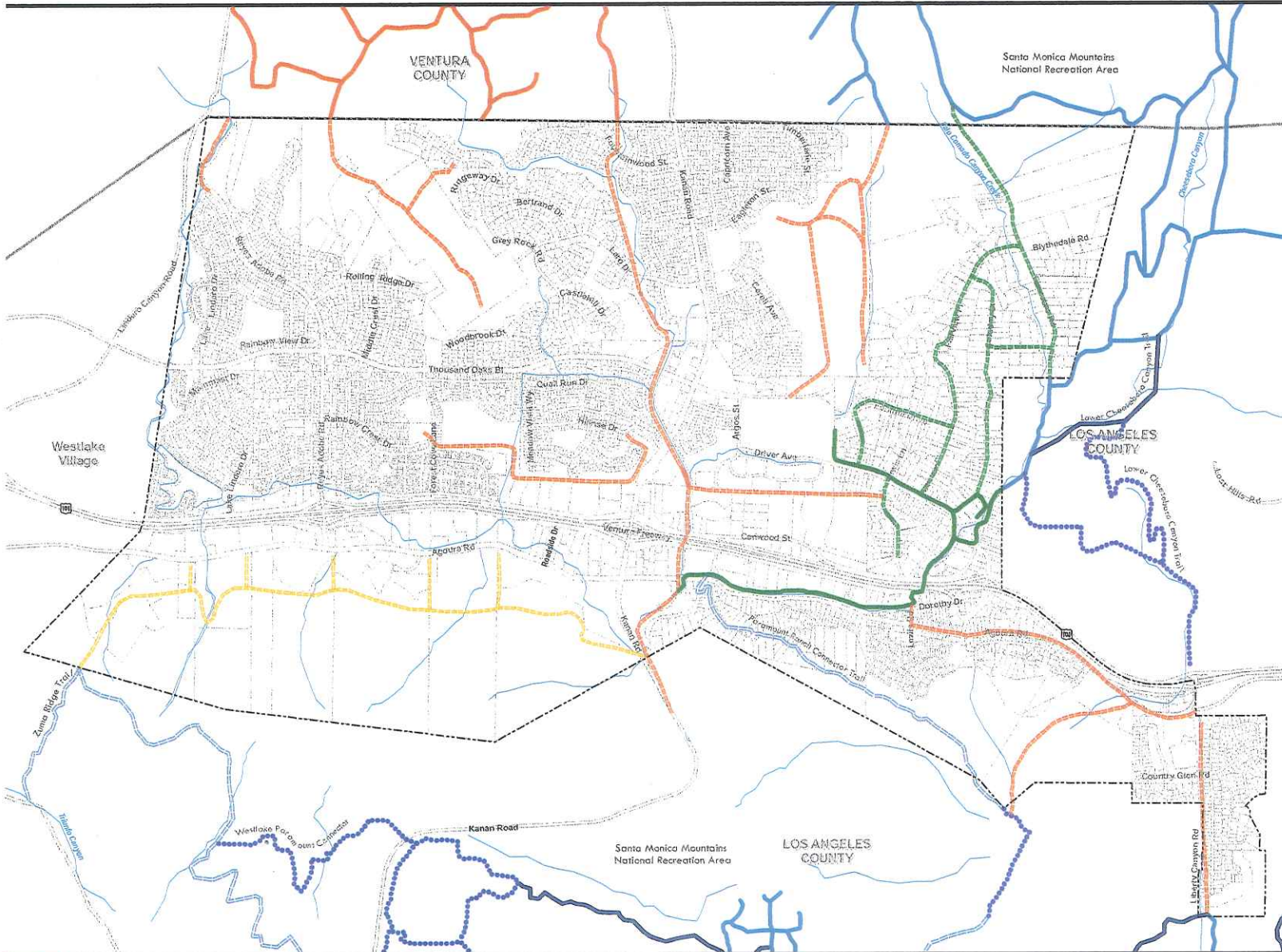


**CITY of AGOURA HILLS  
General Plan Update EIR**

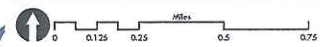
**TRAIL NETWORK**

**Legend**

- Existing, All Purpose
- - - Future, All Purpose
- Future, All Purpose  
(Final trail alignment subject to future trail study)
- Existing, Equestrian
- - - Future, Equestrian
- Santa Monica Mountains NRA**
- Existing, Multiple Use
- - - Existing, Hike & Equestrian Only
- ⋯⋯⋯ Existing, Unofficial Trail
- - - Future, Multiple Use
- City Limits
- County Boundary
- ~ Streams



Source: City of Agoura Hills, 2009  
Agoura Hills Citywide Trails  
and Pathways Master Plan, 2008  
NPS TMAP Conceptual Trail Policy  
Alternatives, 2009  
D21377\_Agoura\_Hills\_Trails.mxd



**Figure 4.12-2**

**(Figure CS-3 of the General  
Plan Shall Be Like This FEIR Figure)**








**CITY of AGOURA HILLS  
General Plan Update**

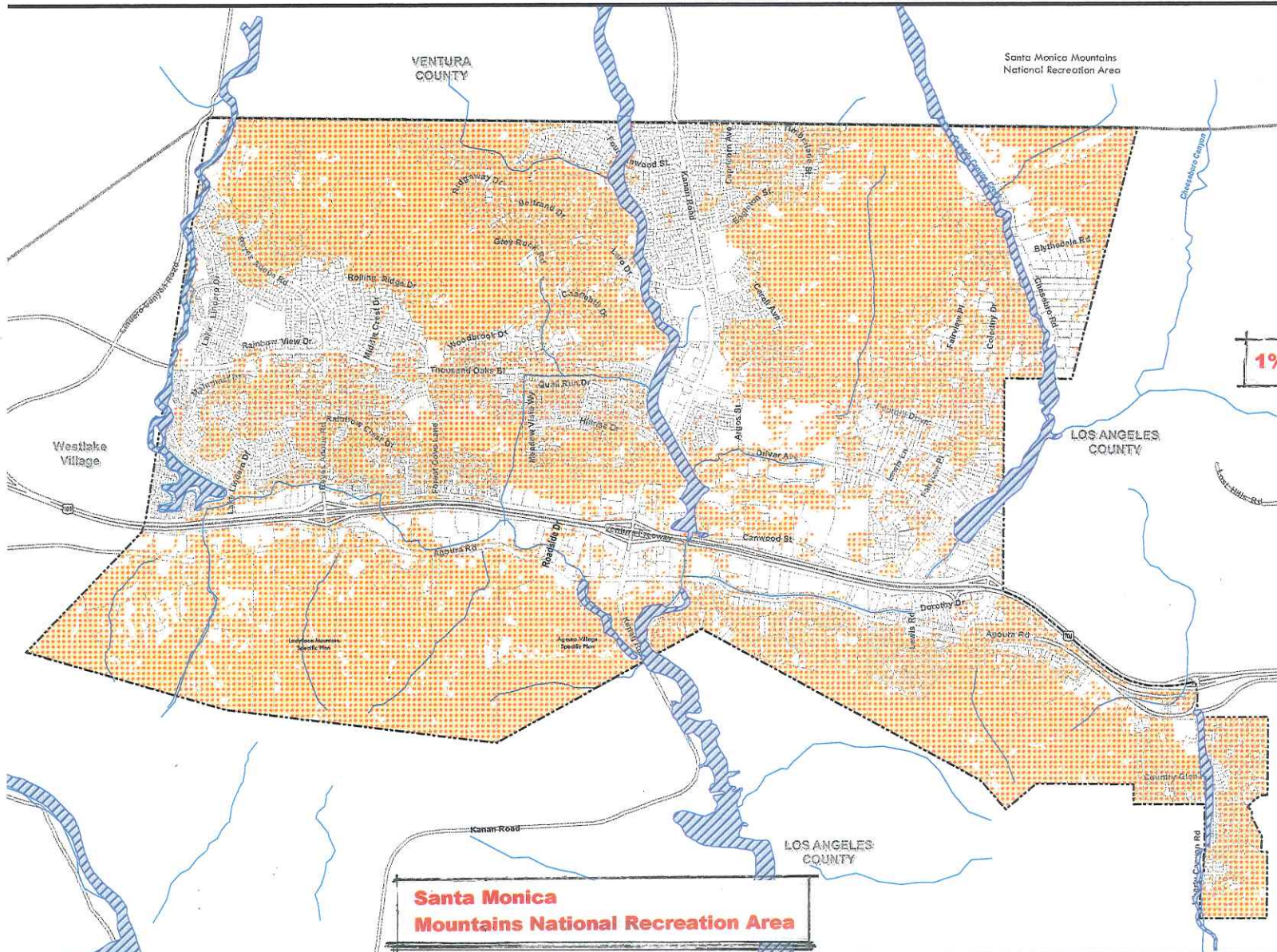
**HAZARDS**

**Legend**

Entire City is in a Very High Fire Hazard Severity Zone

-  Special Flood Hazard Area Inundated by 100-Year Flood (Zone A - No base flood elevations determined)
-  Slopes > 10% Note: See Policy S-2.2
-  City Limits
-  County Boundary
-  Streams

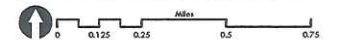
**1% Annual Chance of Flood**



**Santa Monica  
Mountains National Recreation Area**



Source: City of Agoura Hills Fire Hazard, 2009; FEMA Q3; USGS Seamless Data Distribution System, 2009  
D21377\_Agoura\_Hills/Public Safety Management.mxd

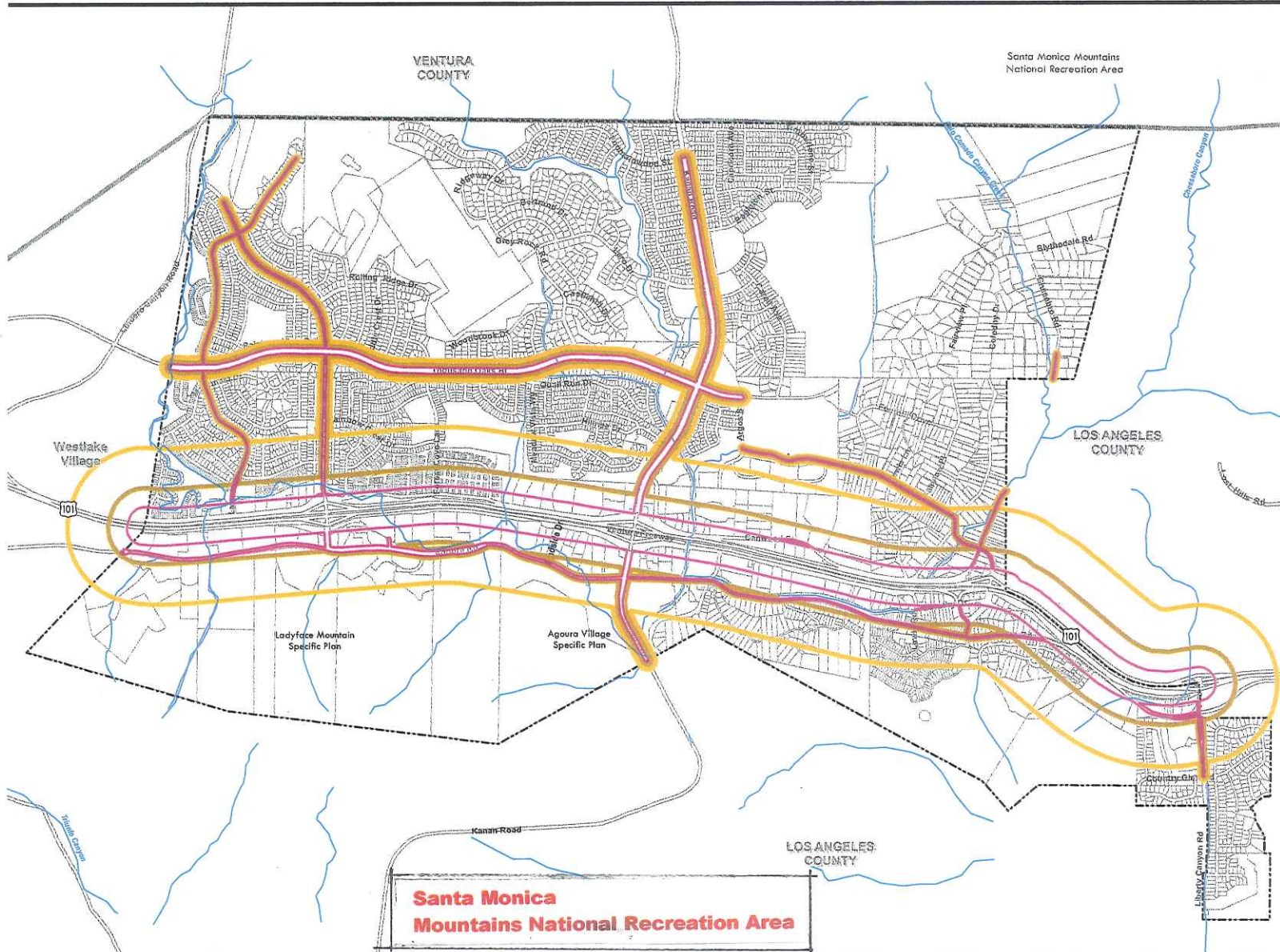




**CITY of AGOURA HILLS  
General Plan Update**

**NOISE CONTOURS-  
EXISTING**

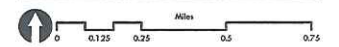
- Legend**  
Existing Roadway Noise Contours
- 70 CNEL
  - 65 CNEL
  - 60 CNEL
  - City Limits
  - Parcel Boundaries
  - Streams



**Santa Monica  
Mountains National Recreation Area**



Source: Fehr & Peers, June 2009  
D21377\_Agoura\_Hills\_noise.mxd





**CITY of AGOURA HILLS  
General Plan Update**

**NOISE CONTOURS-  
FUTURE**

**Legend**

**Future Roadway Noise Contours**

70 CNEL

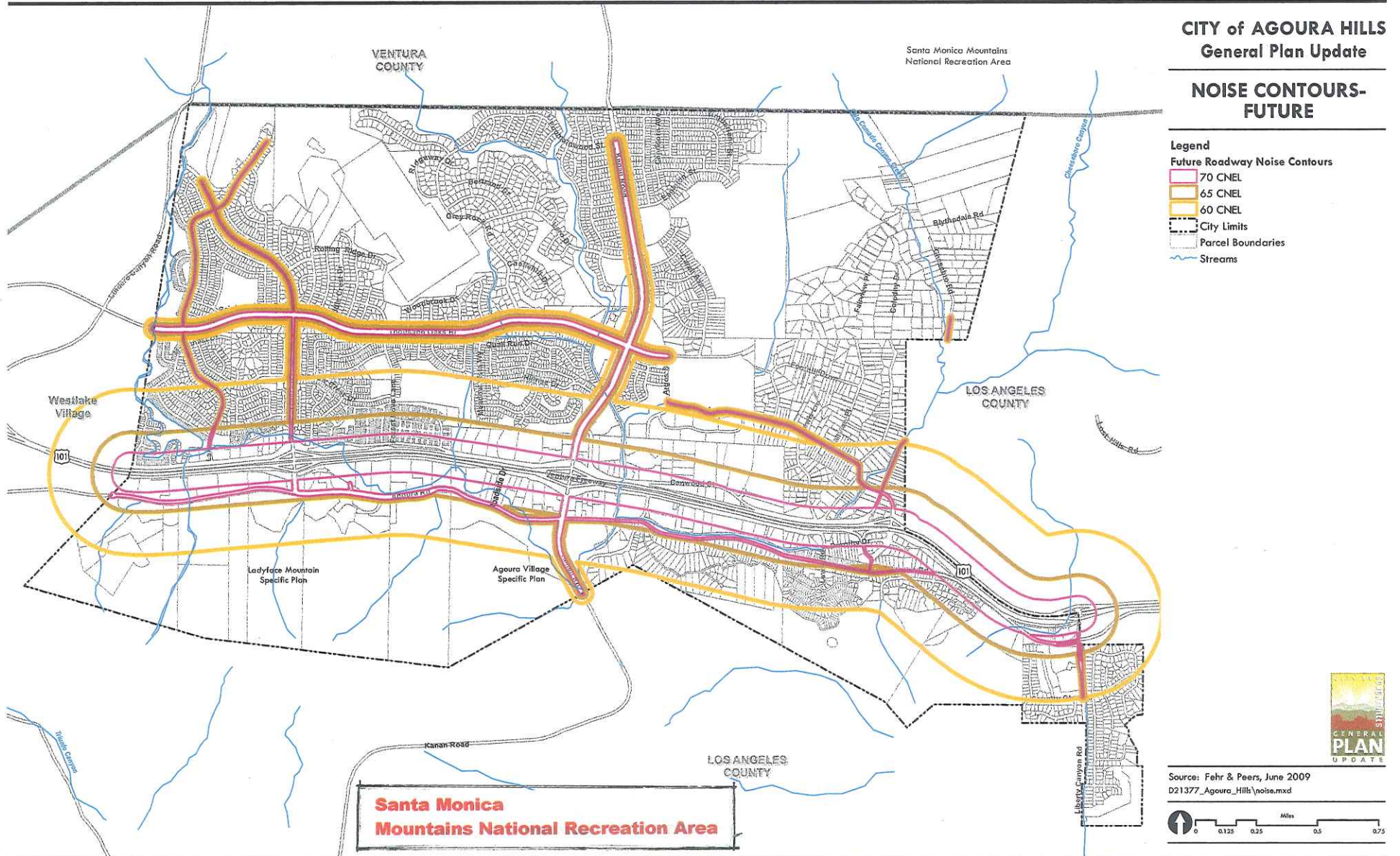
65 CNEL

60 CNEL

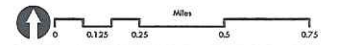
City Limits

Parcel Boundaries

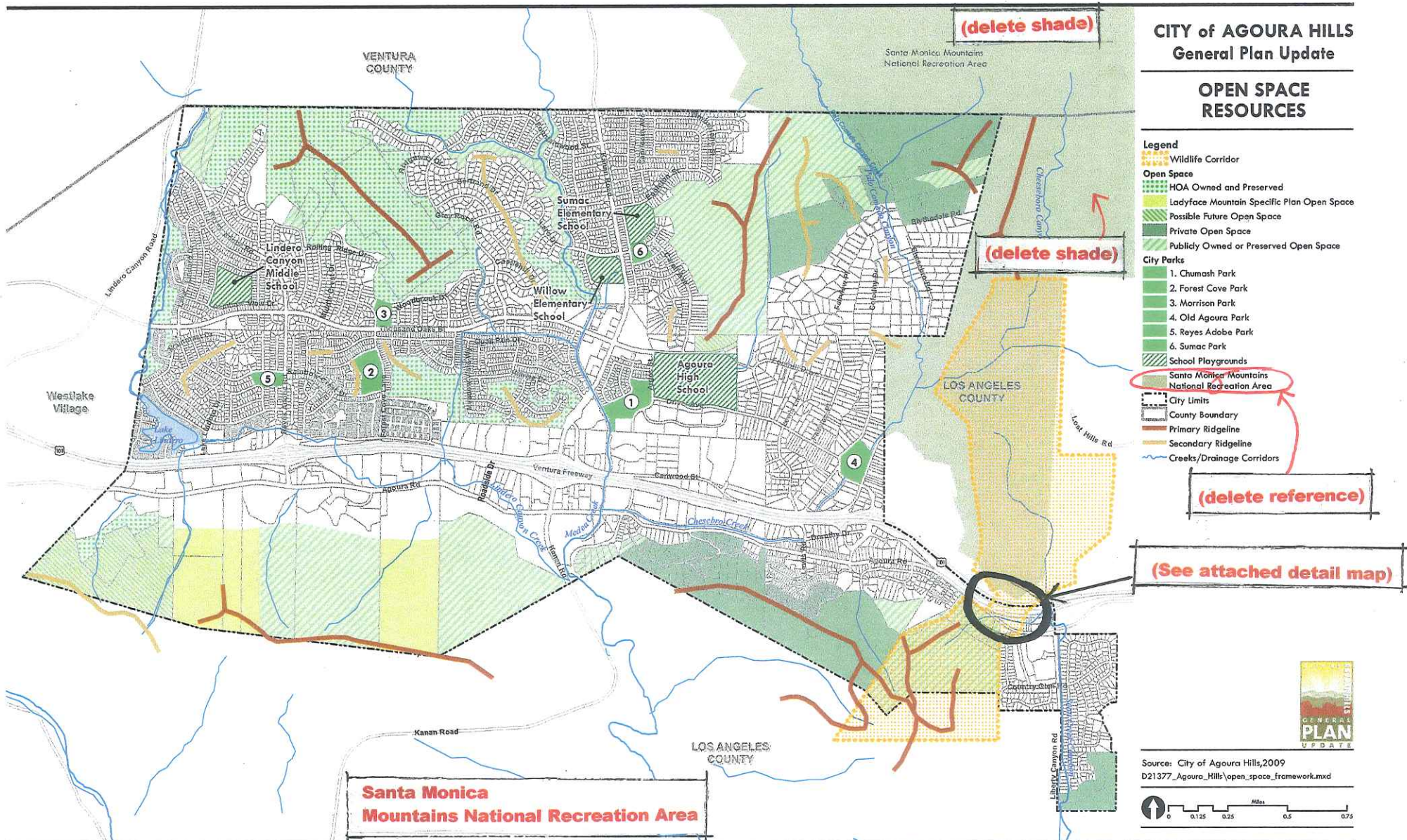
Streams



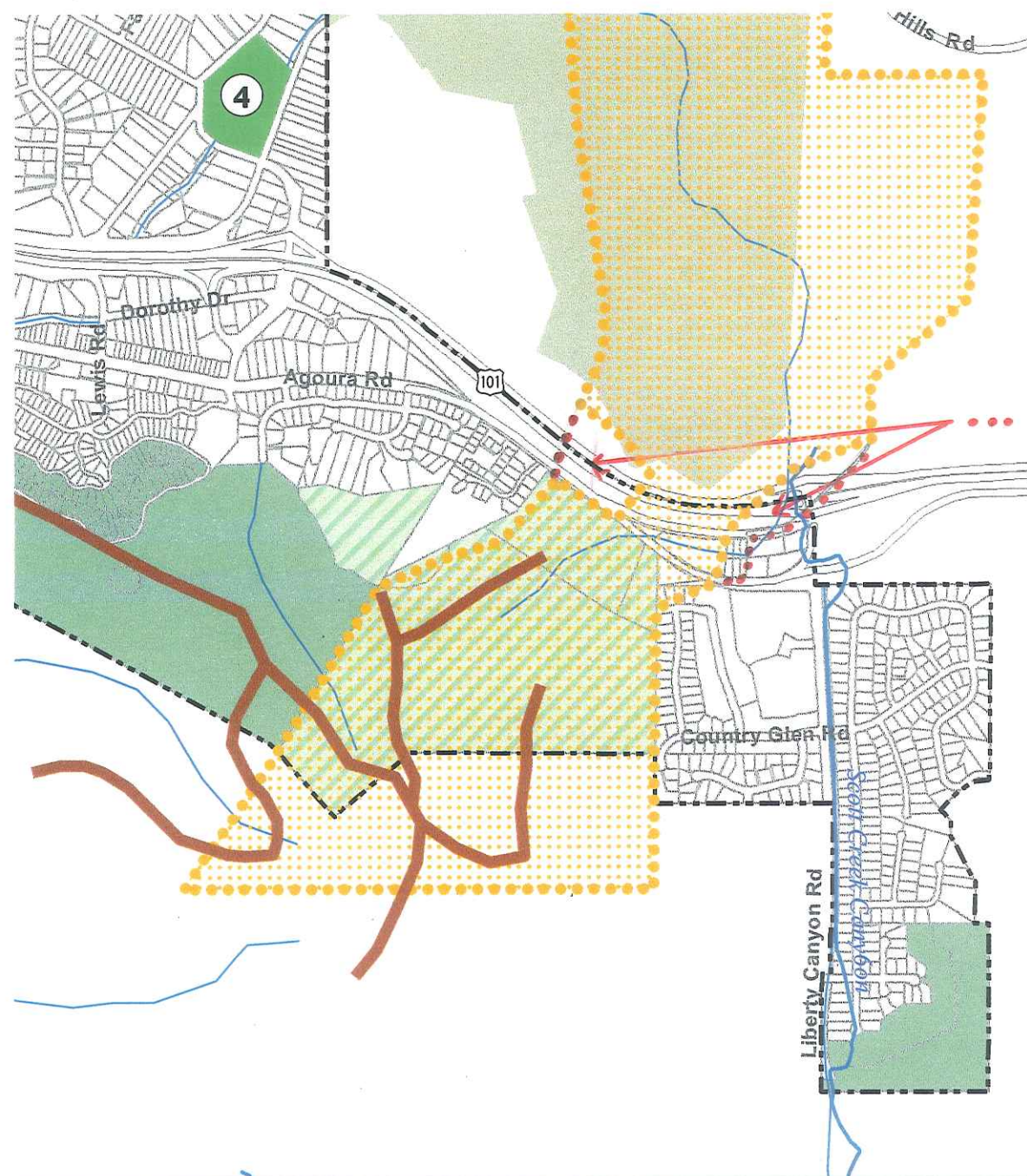
Source: Fehr & Peers, June 2009  
D21377\_Agoura\_Hills\noise.mxd







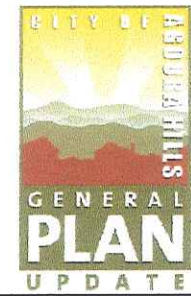




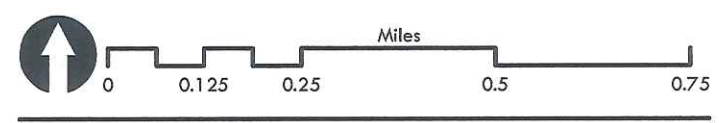


-  Secondary Ridgeline
-  Creeks/Drainage Corridors

 (Expanded Boundary)



Source: City of Agoura Hills, 2009  
D21377\_Agoura\_Hills\open\_space\_framework.mxd



**Figure NR-1**